

Hawaii Visitor Industry Trend

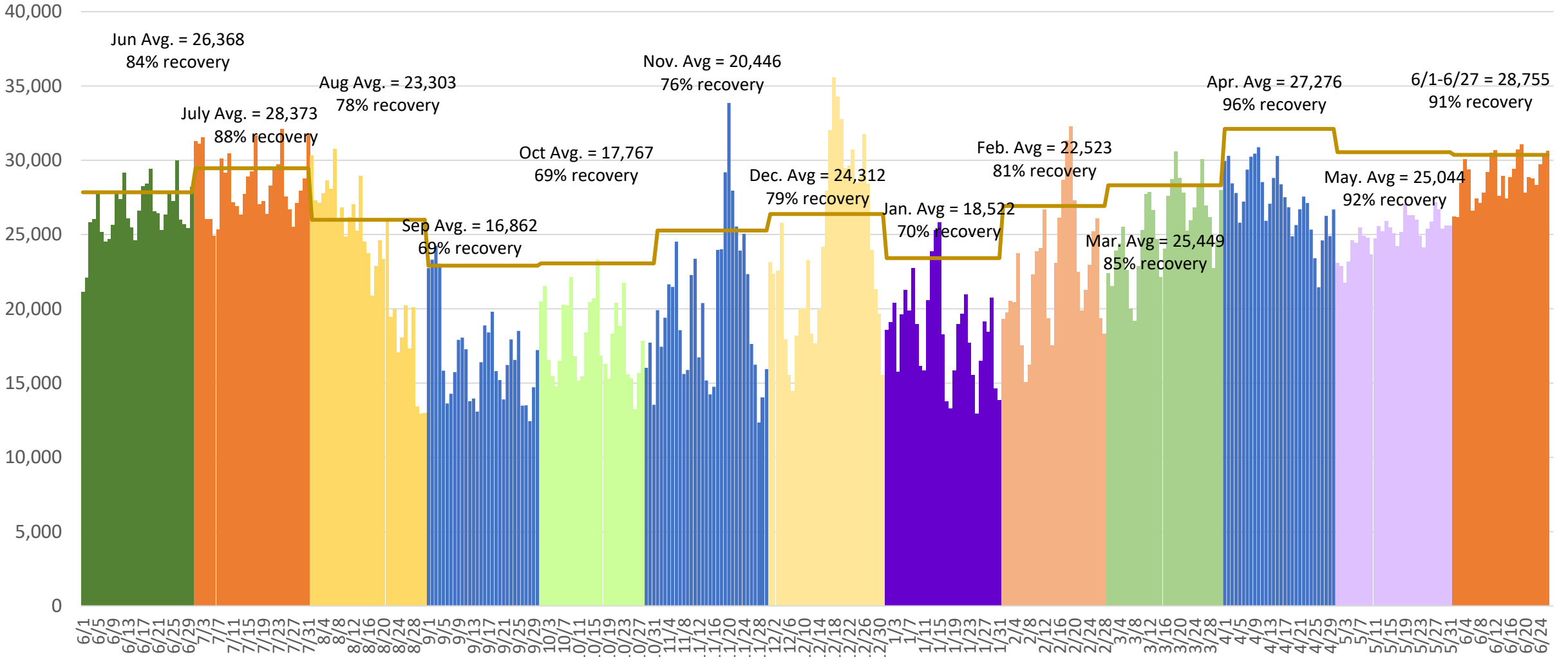
June 30, 2022 (updated)

Research and Economic Analysis Division, DBEDT

Daily TOTAL visitor arrivals to Hawaii: June 1, 2021 to June 27, 2022

(% recovery from the same month in 2019)

Daily Visitor Arrivals
to Hawaii

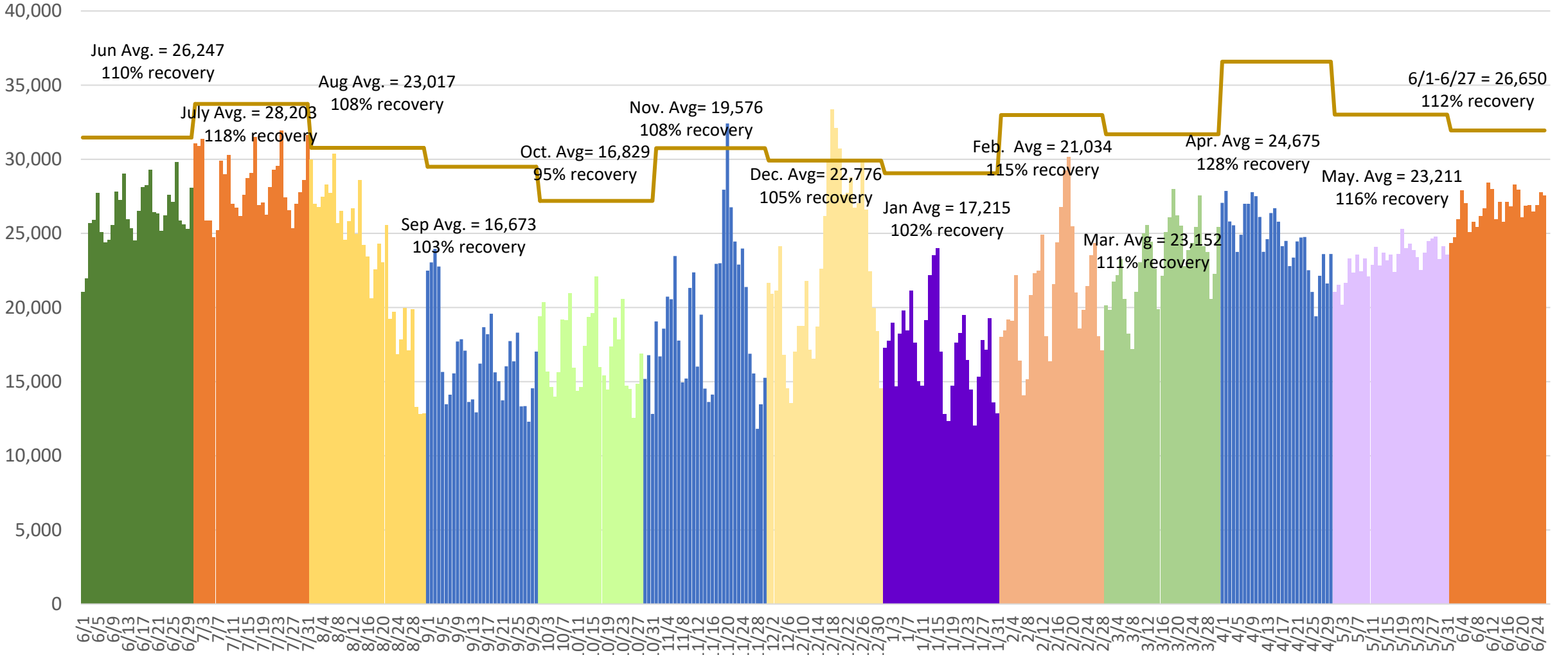


Source: Hawaii Tourism Authority, DBEDT

Daily DOMESTIC Daily pax visitor arrivals to Hawaii: June 1, 2021 to June 27, 2022

(% recovery from the same month in 2019)

Daily Visitor Arrivals
to Hawaii

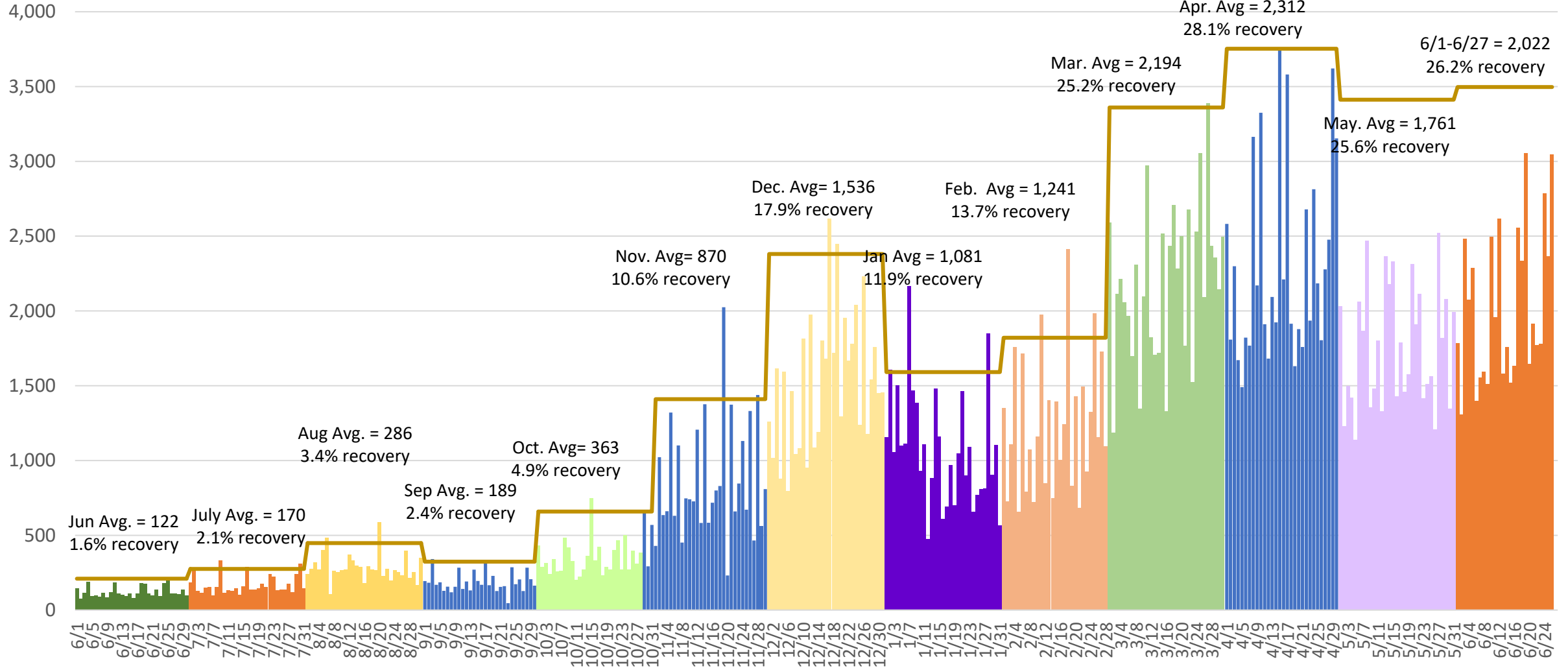


Source: Hawaii Tourism Authority, DBEDT

Daily INTERNATIONAL Daily pax visitor arrivals to Hawaii: June 1, 2021 to June 27, 2022

(% recovery from the same month in 2019)

Daily Visitor Arrivals
to Hawaii



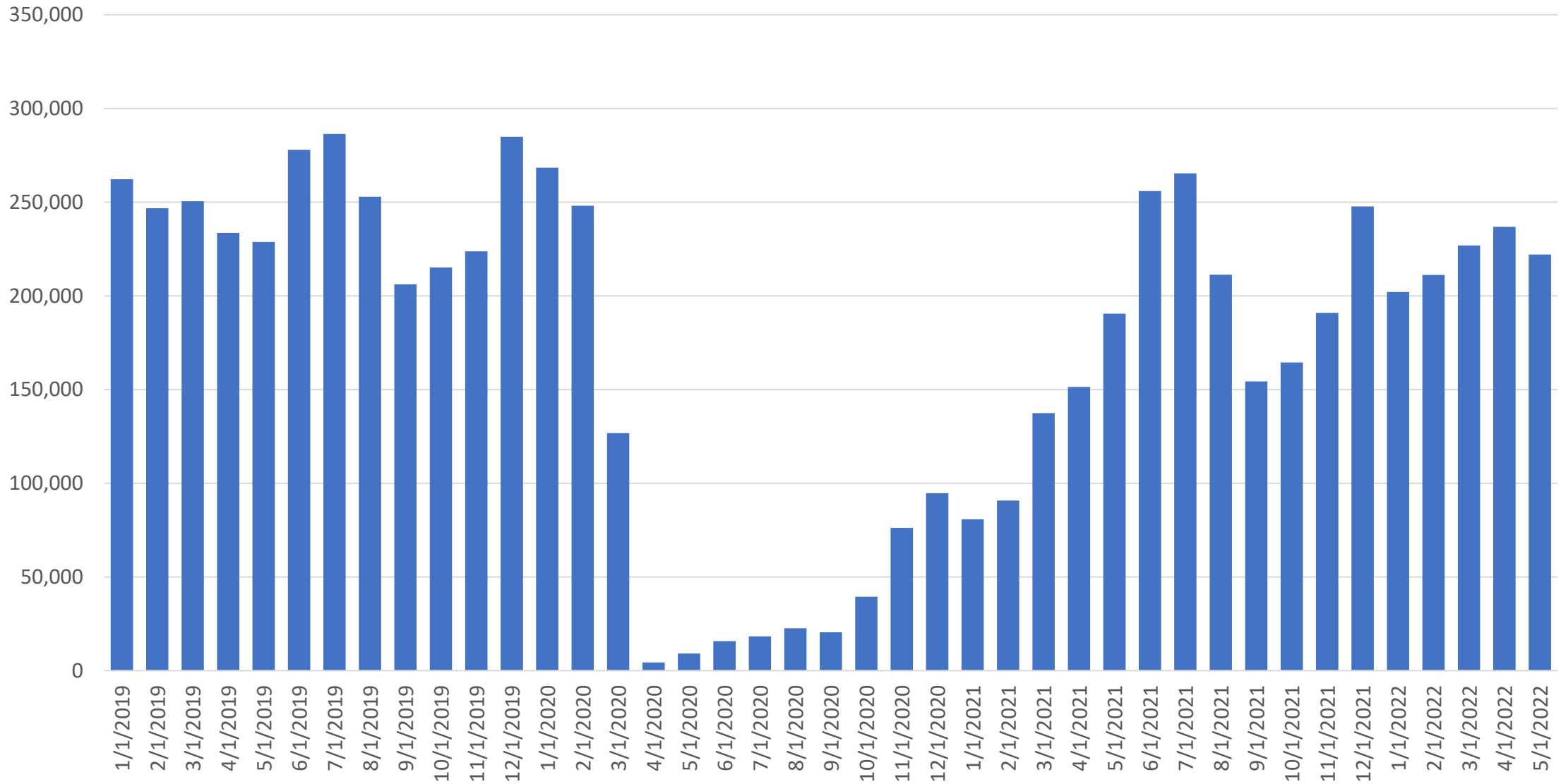
Source: Hawaii Tourism Authority, DBEDT

Total Visitor Expenditures: January 2020 to May 2022



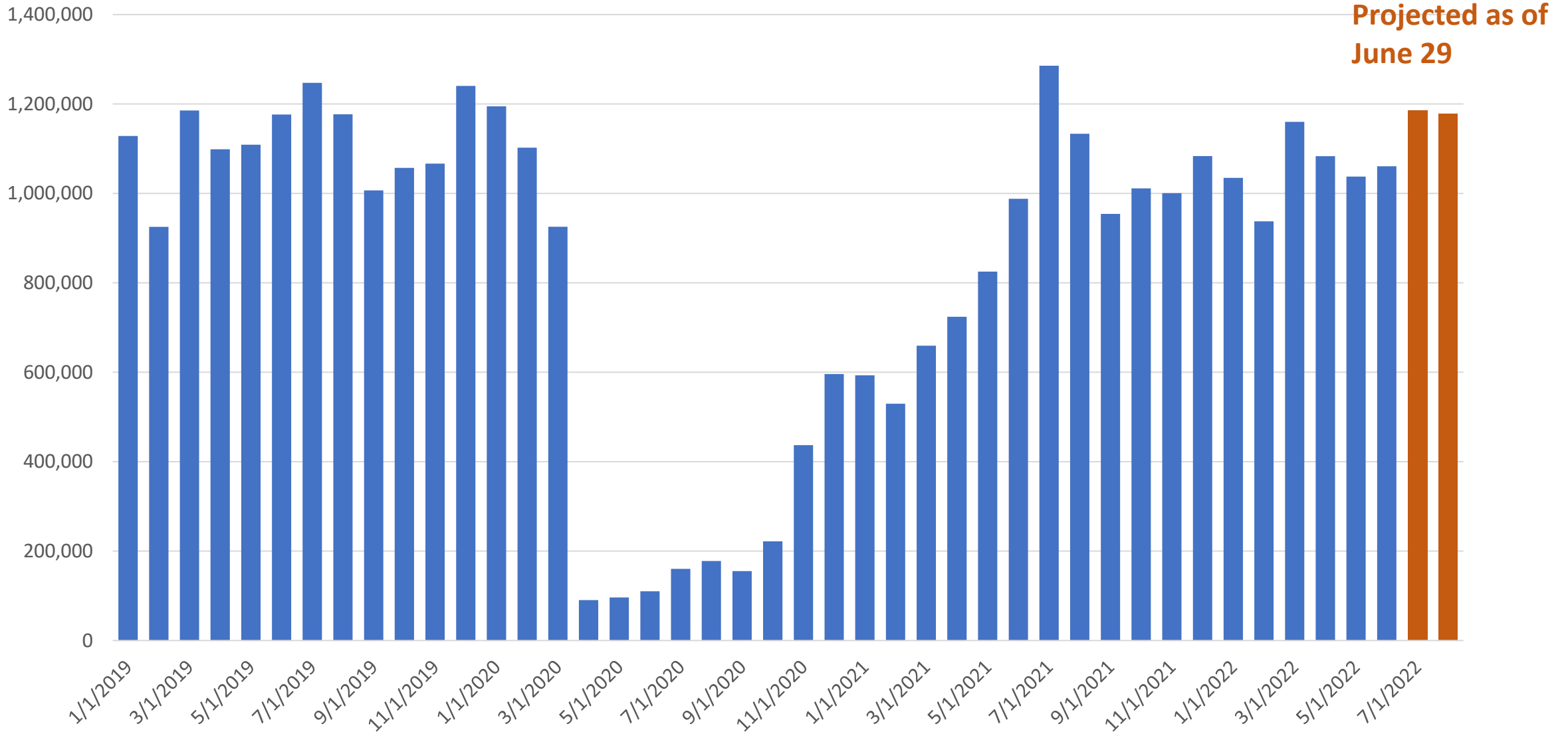
Source: Hawaii Tourism Authority, DBEDT

Average Daily Visitor Census: January 2020 to May 2022



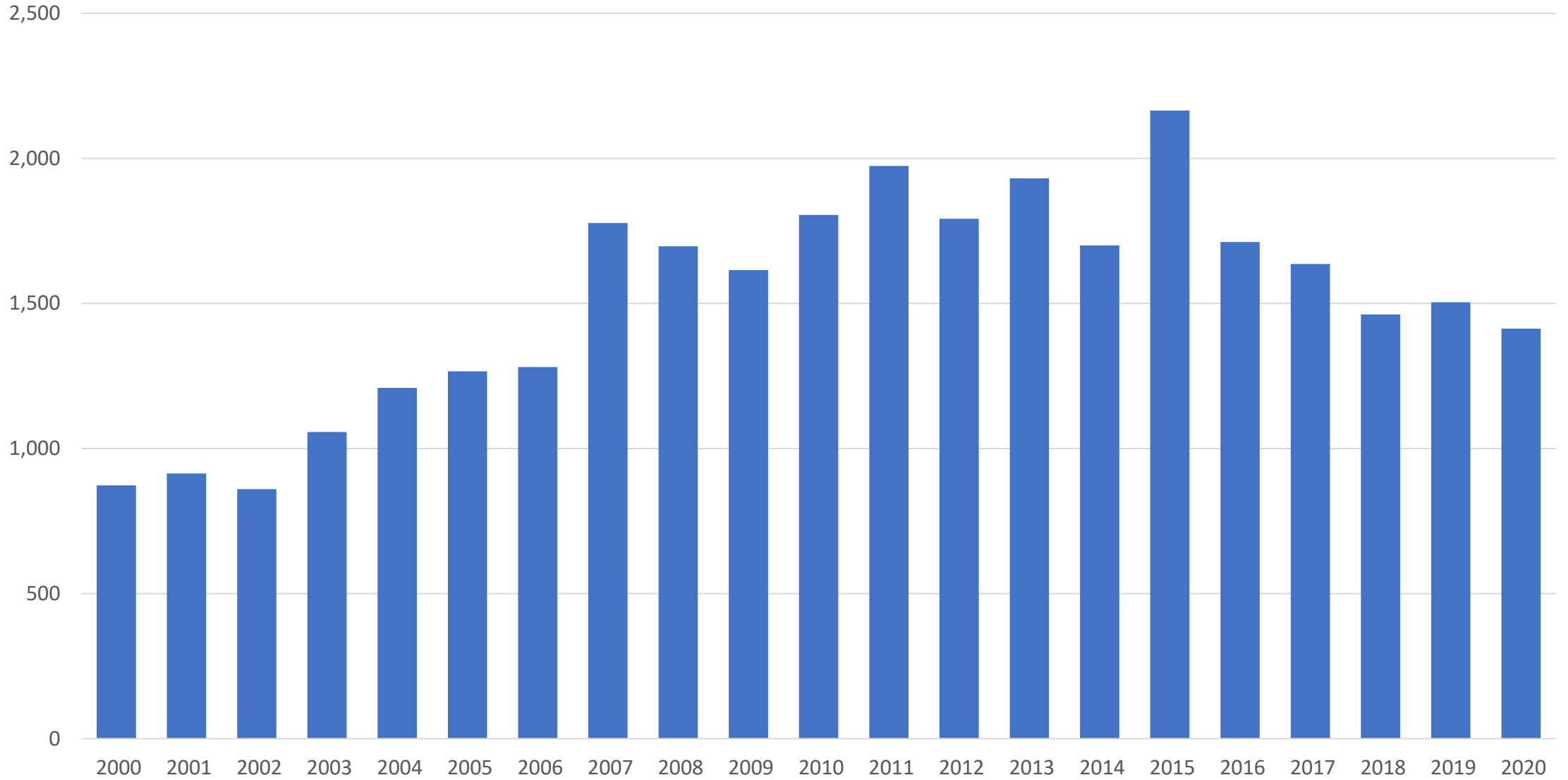
Source: Hawaii Tourism Authority, DBEDT

Actual Air Seats on Scheduled Flights: January 2019 to August 2022



of properties

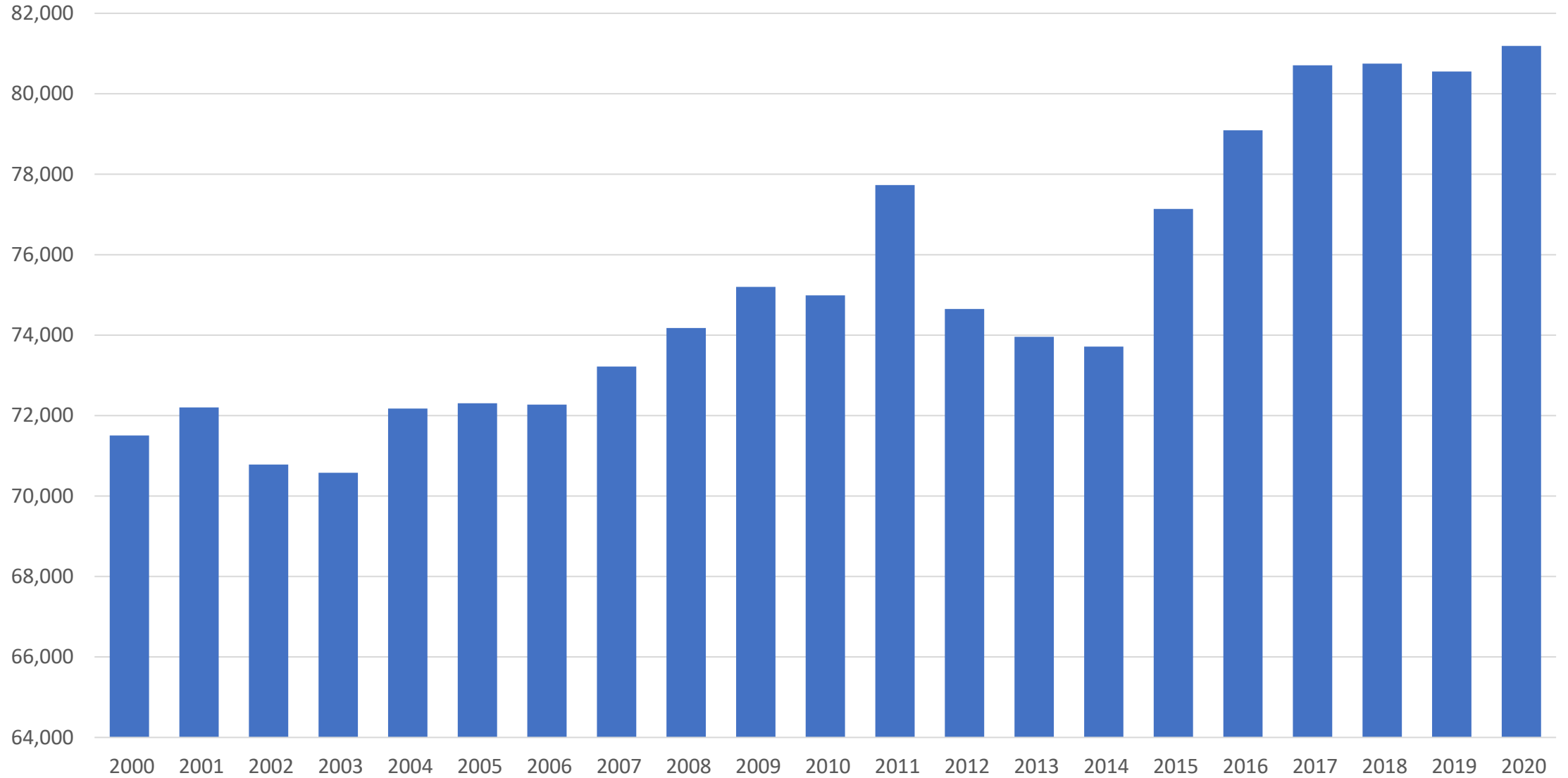
Visitor Accommodations Properties: 2000 to 2020



Source: Hawaii Tourism Authority, DBEDT

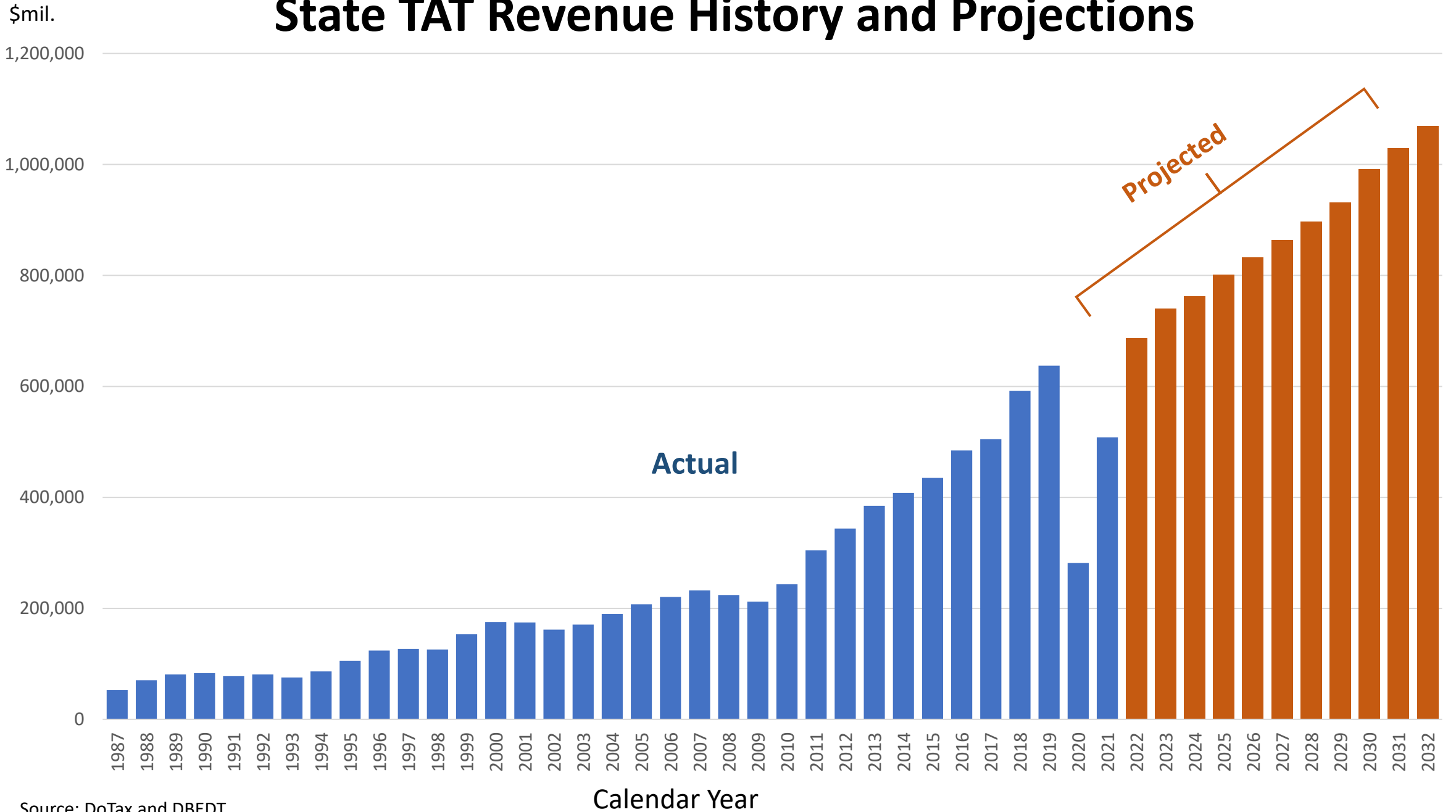
of units

Visitor Accommodations Units: 2000 to 2020



Source: Hawaii Tourism Authority, DBEDT

State TAT Revenue History and Projections



Source: DoTax and DBEDT

TAT Revenue Estimate for State and Counties (10.25% State Rate, 3% County Rate, in \$1,000)

CY	State	Honolulu County	Maui County	Hawaii County	Kauai County
2022	686,132	66,346	84,179	30,167	25,880
2023	739,650	71,508	93,512	32,093	27,707
2024	761,840	76,072	98,957	33,485	28,538
2025	801,245	81,515	106,850	34,765	29,629
2026	831,884	85,105	110,936	36,557	31,157
2027	863,696	88,850	115,178	37,955	32,348
2028	896,723	95,136	119,583	39,407	33,585
2029	931,014	99,317	124,156	41,431	35,311
2030	991,401	103,678	132,209	43,016	36,661
2031	1,029,312	110,934	137,264	44,661	38,063
2032	1,068,673	115,799	142,513	46,368	39,519

Source: DBEDT Estimates

Few Takeaways

- **Visitor arrivals recovery peaked in April 2022 at 96.3%, then slowed down in May (91.6%) and June (projected to be 91%)**
- **Visitors arrived on domestic flights (including U.S. visitors and international visitors) surpassed the same month 2019 level since May 2021 except October 2021**
- **U.S. visitors (arrived on domestic and international flights) have surpassed the same month 2019 level every month since May 2021**
- **International visitor recovery peaked in April 2022 at 28.1% and then slowed to 25.6% in May and 26.2% in June**
- **Air seats have been recovered 94.7% of the 2019 level (12,709,990 seats in the past 12 months vs 13,417,700 in 2019)**
- **In nominal terms, air visitor expenditures during the past 12 months was \$16.8 billion, 95.1% of the 2019 level (\$17.7 billion). Adjusting inflation, visitor expenditures in the last 12 months was about 84% of the 2019 level.**

Few Takeaways (cont.)

- **Daily visitor census recovered 87.2% during the past 12 months from the 2019 level**
- **In the last few years, number of visitor accommodation properties decreased but number of visitor rooms were stable. Properties becoming larger**
- **TAT revenue during the past 12 months (June 2021 to May 2022) was 12.8% higher than the calendar 2019 level due to high daily room rate**