



UNIVERSITY of HAWAI'I°
WEST O'AHU

Sustainable Community Food Systems

Albie Miles, Ph.D.

Assistant Professor, Sustainable Community Food Systems, University of Hawaii - West Oahu

Director, Hawai'i Institute for Sustainable Community Food Systems

Cooperating Graduate Faculty Member, Natural Resources & Environmental Management, UH Manoa

Chair, UH System Student Basic Needs Committee

albie@hawaii.edu

What is the Food System?

The food system encompasses all the drivers, activities and resources that go into producing, distributing, consuming food and waste disposal.

The food system has a profound influence on public health, culture, society, economics, and the environment.



- Tansey, G., & Worsley, A. (2014). *The food system*. Routledge.
- Scientific Group for the UN Food Systems Summit (2021). [Food Systems – Definition, Concept and Application for the UN Food Systems Summit](#).

Global food systems are failing humanity and accelerating climate change

- InterAcademy Partnership (IAP): **130 national academies of science and medicine** across Africa, Asia, the Americas and Europe.
- “The current approach to food, nutrition, agriculture, and the environment is unsustainable.”
- “Transforming the food system is the key to improving human and planetary health.”

InterAcademy Partnership. (2018). Opportunities for future research and innovation on food and nutrition security and agriculture—a global perspective.



Externalized Costs of a Cheap Food Policy in the US: Chronic Diseases

1. [Heart Disease and Stroke](#): costs our health care system \$214 billion per year and causing \$138 billion in lost productivity on the job.
2. [Cancer](#): The cost of cancer care continues to rise and reached almost \$174 billion by 2020.
3. [Diabetes](#): 2017, the total estimated cost of diagnosed diabetes was \$327 billion in medical costs and lost productivity.
4. [Obesity](#): Obesity costs the US healthcare system \$147 billion a year.

*Chronic diseases: conditions that last 1 year or more and require ongoing medical attention or limit activities of daily living or both. Chronic diseases such as [heart disease](#), [cancer](#), and [diabetes](#) are the leading causes of death and disability in the United States. They are the leading drivers of the nation's \$3.8 trillion in annual [health care costs](#).

CDC 2020: <https://www.cdc.gov/chronicdisease/about/costs/index.htm>



Native Hawaiian & Pacific Islander Health Inequities



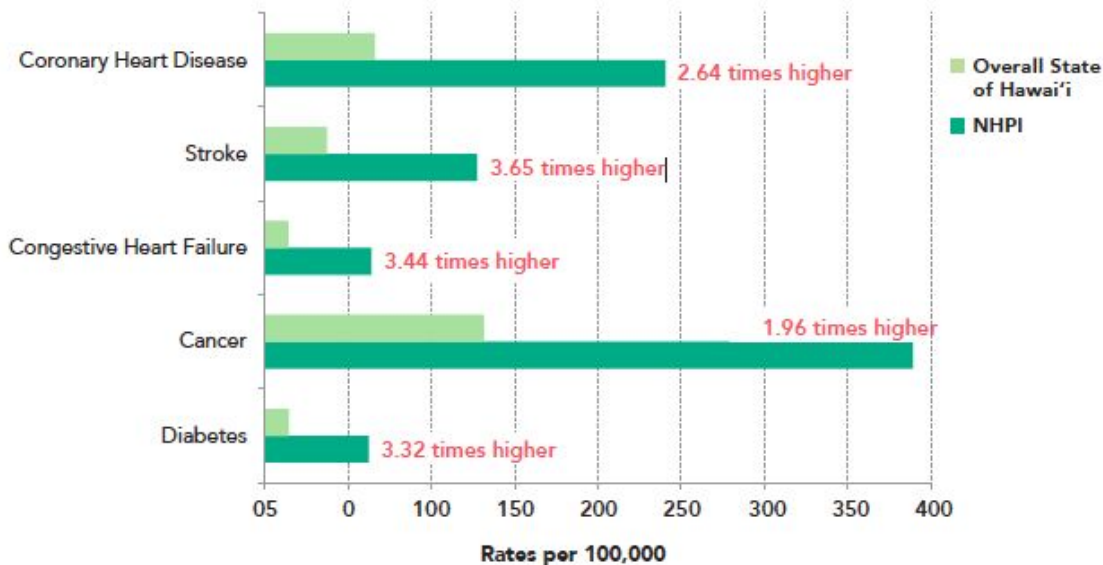
Assessment and Priorities for the Health and Well-Being in Native Hawaiians and Pacific Islanders



2020

Department of Native Hawaiian Health
John A. Burns School of Medicine
University of Hawai'i at Mānoa

Figure 3. Leading Causes of Death for NHPI, 2015



Data Source: Hawai'i DOH, 2020; Soong, 2020

Look, M. A., Soong, S., & Kaholokula, J. K. (2020). *Assessment and priorities for the health and well-being in Native Hawaiians and Pacific Islanders*. University of Hawai'i, John A. Burns School of Medicine, Department of Native Hawaiian Health.



The Food System of Hawaii at a Crossroads

- Most **geographically isolated** food-import dependent population state in the world.
- High levels of **food import dependence**: ~90%
- **Just-in-time economy**: commercial food stocks are enough to support the state population (1.35 million + visitors) for ~5-7 days.

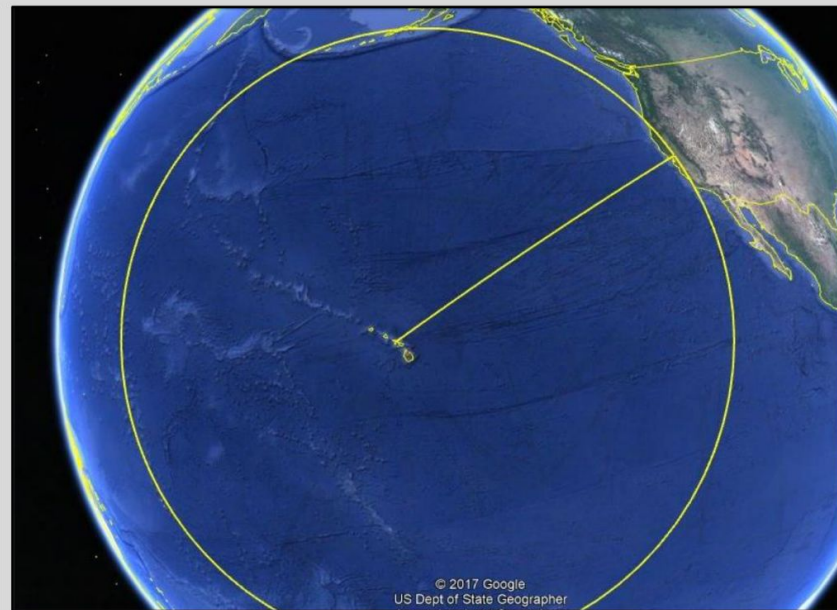
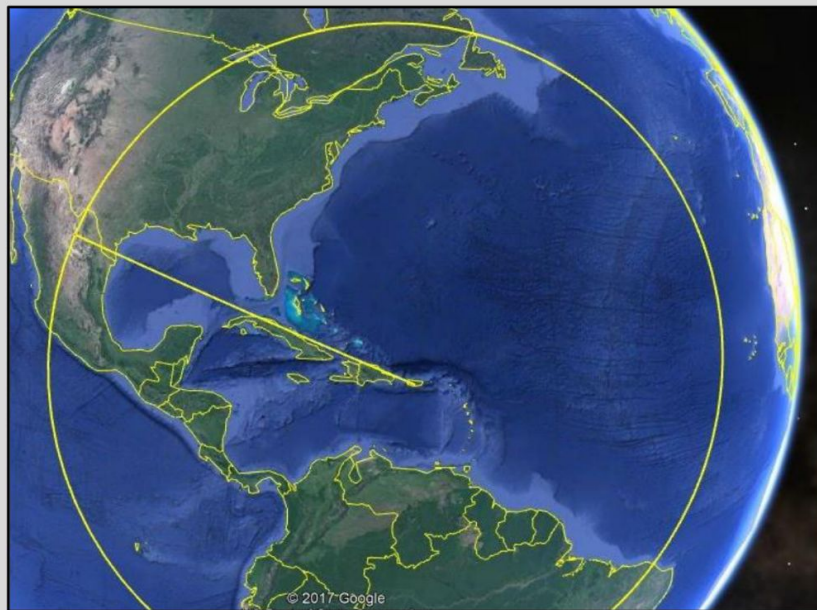


The Food System of Hawaii at a Crossroads

- Moderate to high levels of **household food insecurity**: 8%-16.7% (35.7% in the Hawaiian community).
- **Critical systems infrastructure** - seaport, refineries, power, airport - located within the same 12 mi. of low-elevation coastline of Oahu.
- **Key systemic vulnerabilities:**
 - *Few functional redundancies in key import infrastructure;*
 - *Little in-state storage of commercial, personal or emergency food;*
 - *Commercial food storage is w/in inundation zone;*
 - *Little to no coordination between public EMAs and private sector for emergency food distribution;*
 - *No comprehensive food system resilience and equity plan for the state.*

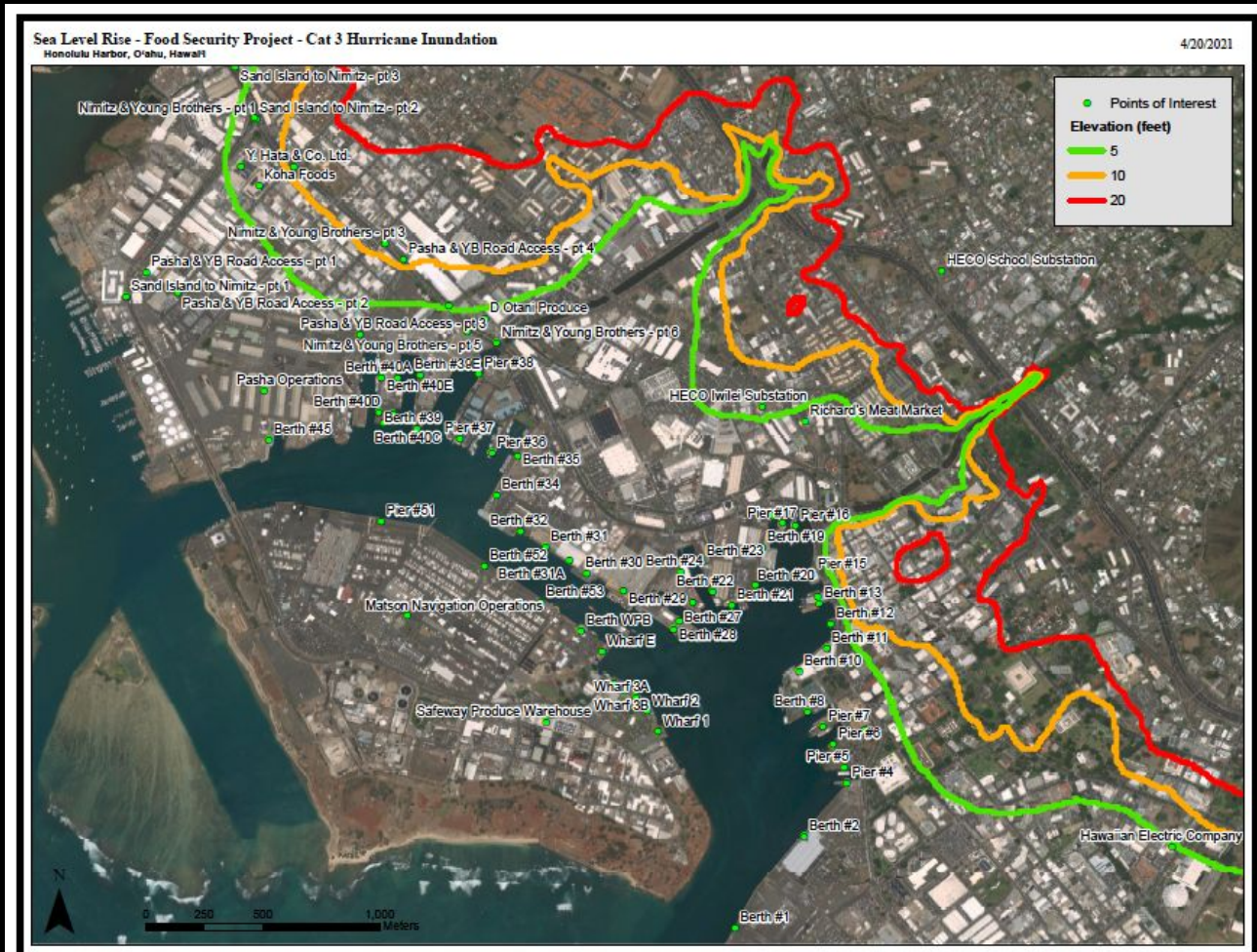


SPHERE OF SUPPORT



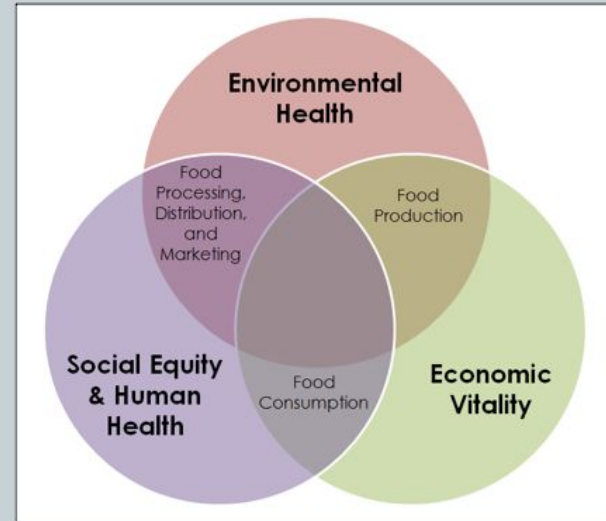
Hawaii Emergency Management Agency (HIEMA) 2019. Critical Systems Analysis.

Assessing Key Food System Vulnerabilities: HNL Port

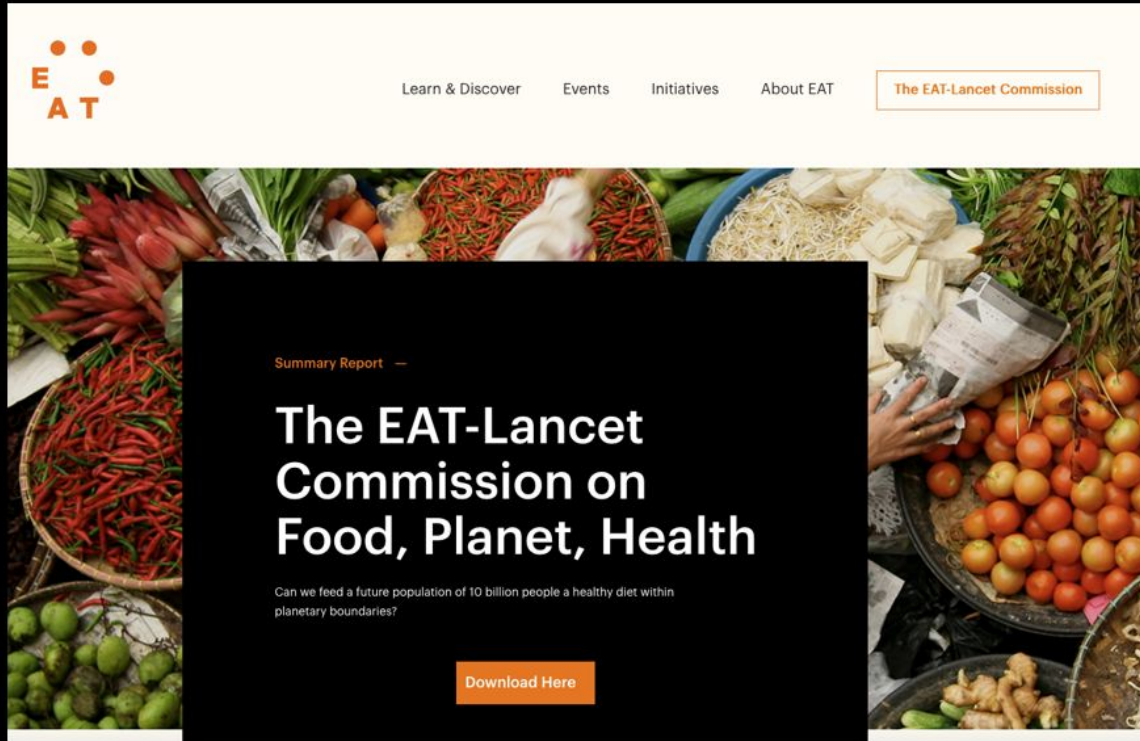


If We Get Food Right, We Get Everything Right

- Environmental Quality
- Energy Use
- Human Health and Well Being
- Economic Development
- Bio-cultural Restoration
- Ethics/Human Values
- Food Security
- Social Equity
- Climate Change Adaptation and Mitigation



“Food is the single strongest lever to optimize human health and environmental sustainability on Earth.”



The screenshot shows the top navigation bar of the EAT-Lancet Commission website. The logo on the left consists of three orange dots above the letters 'E' and 'A' stacked vertically, with 'T' to the right. The navigation menu includes 'Learn & Discover', 'Events', 'Initiatives', and 'About EAT'. A highlighted button on the right says 'The EAT-Lancet Commission'. Below the navigation is a large banner image of a market stall with various fresh produce. Overlaid on this image is a dark grey box containing the text: 'Summary Report —', 'The EAT-Lancet Commission on Food, Planet, Health', 'Can we feed a future population of 10 billion people a healthy diet within planetary boundaries?', and an orange 'Download Here' button.

EAT

Learn & Discover Events Initiatives About EAT

The EAT-Lancet Commission

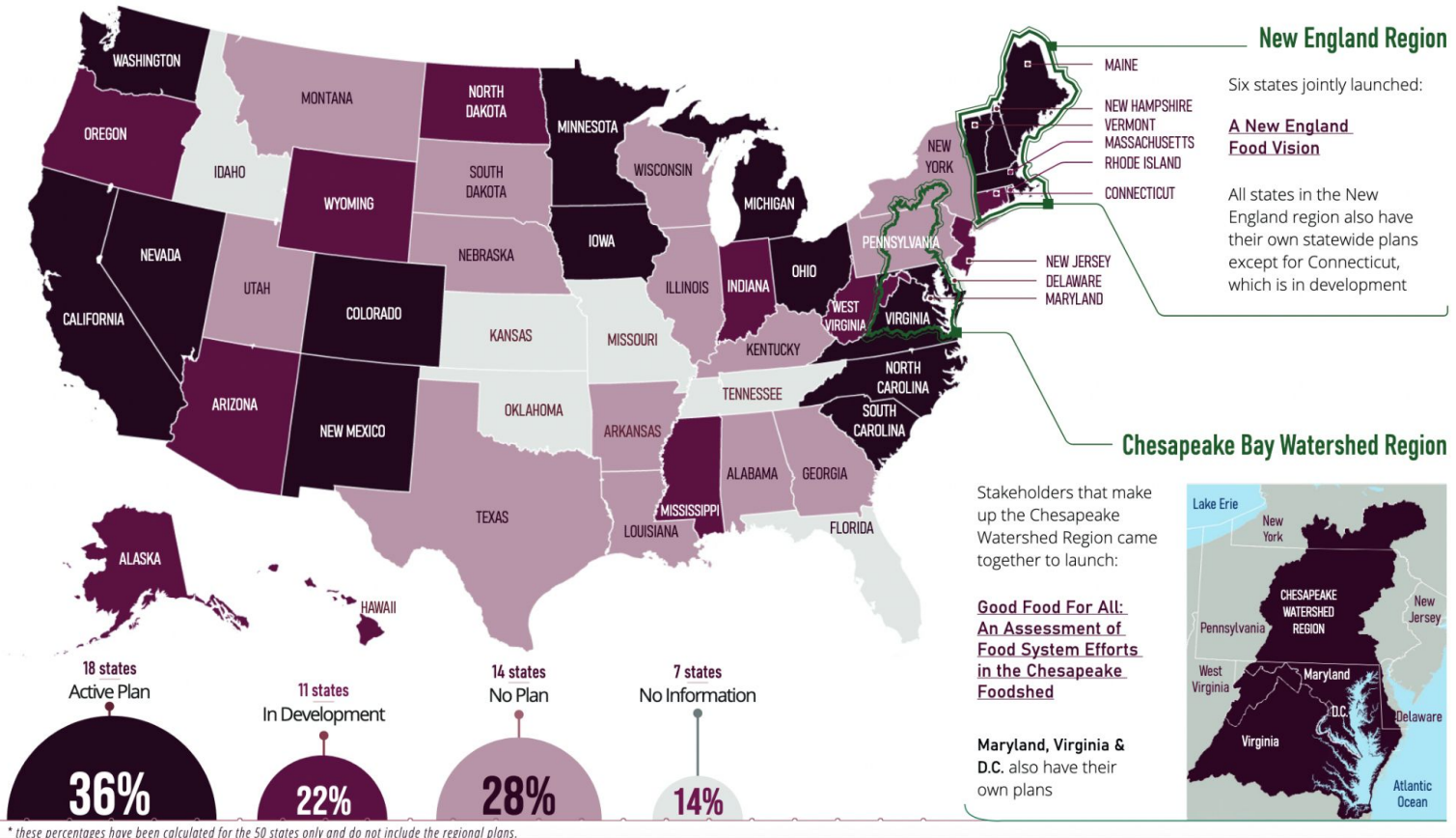
Summary Report —

The EAT-Lancet Commission on Food, Planet, Health

Can we feed a future population of 10 billion people a healthy diet within planetary boundaries?

Download Here

Map of state and regional food system plans and charters



Transforming Hawai'i's Food System Together

← → ↻ <https://transforminghawaiifoodsystem.org> 80% ★

Transforming Hawai'i's Food System Together

About Resources Get The Latest News

Knowledge Products Planning Landscape Analysis Events

Transforming Hawai'i's Food System Together

"FOOD IS THE SINGLE STRONGEST LEVER TO OPTIMIZE HUMAN HEALTH AND ENVIRONMENTAL SUSTAINABILITY ON EARTH"

THE EAT LANCET COMMISSION

Join Our Events

<https://transforminghawaiifoodsystem.org/about/>



Transforming Hawai'i's Food System Together

Create new elements of the food and agriculture economy that integrate sustainable economic development, climate change resilience and biocultural restoration with community health and well-being.

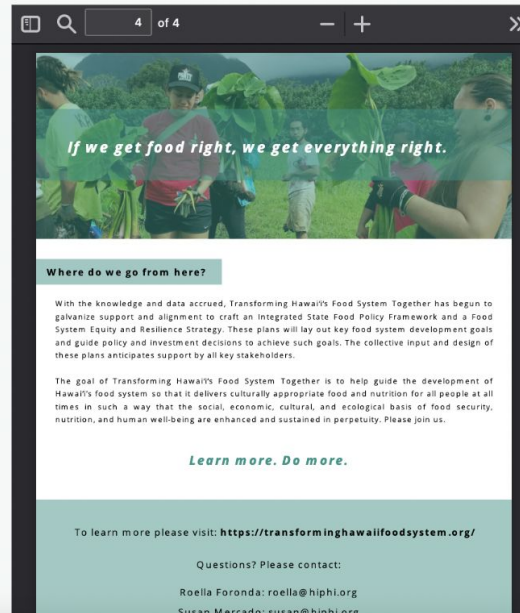
Transforming Hawai'i's Food System Together

Knowledge Products

Executive Summary: The Transforming Hawai'i's Food Systems Together initiative has conducted a series of applied research projects (below) that will inform policy and planning recommendations and build statewide capacity to achieve a more economically robust, sustainable, equitable and resilient food system for Hawai'i. The key findings of these Knowledge Products will inform the development of an Integrated State Food Policy Framework and Food System Resiliency and Equity Strategy for Hawai'i.

Our Knowledge Products:

1. [Food System Mapping](#)
2. [Social Network Analysis](#)
3. [Comprehensive State Policy Analysis](#)
4. [Vulnerability Assessments](#)
5. [Amplifying the Work of Subsistence Indigenous Producers](#)
6. [Hawai'i Farmer & Rancher Focus Groups](#)
7. [Institutional Purchasing](#)



TRANSFORMING



HAWAI'I'S FOOD SYSTEM



TOGETHER





Advocate | Collaborate | Implement

Food System Summit's Top 12 Policy Priorities:

<https://staging2.transforminghawaiifoodsystm.org/food-summit/>



HB308 HD1 SD2 - Statewide Food Systems Planning

(Sustainable Food Systems Working Group; HDOA; Plan; Appropriation)

Establishes the sustainable food systems working group within the Department of Agriculture. Requires the working group to submit a plan, any recommendations for implementing the plan, and any proposed legislation to the legislature. Appropriates funds to establish the working group and develop the plan and for an unspecified number of sustainability specialist positions to be employed by the Department of Agriculture.



Local food, willingness to pay & the sustainability of an island destination

Purpose: Examine the trend toward purchasing locally grown food and evaluate if US tourists visiting Hawai'i are willing to pay more for locally produced foods that are more ecologically sustainable.



Findings:

1. **78% of respondents** stated they were ready to pay a higher price to purchase food that is locally grown, indicating a willingness to aid local agriculture by increasing restaurant/hotel meal bills.
2. **Majority of respondents** indicated that they would pay up to **5% more** for locally grown food.
3. **Average respondents** were willing to pay between **6%-10% more** for local food.
4. **Several respondents** claimed willingness to pay **11%-50% more** for locally produced meals in a restaurant or motel.
5. **More than 70% of survey respondents** would be willing to pay an additional charge to support sustainable tourism in Hawai'i.



Hawai'i Residents' Perception of Farming, Weekly Purchases & Willingness to Spend More for Local Products

Summary: 31% of Hawaii resident (n=400) respondents stated they are willing to spend 10-15% more on local food products.



UH leads \$40M grant for climate-smart food production

[UH News](#) » [Community](#) » UH leads \$40M grant...

<https://www.hawaii.edu/news/2022/10/04/uh-leads-climate-smart-food-production-grant/>

October 4, 2022 [UH News](#)



UNIVERSITY of HAWAI'I®
MĀNOA

Mānoa Links

- [› Admissions](#)
- [› Academics](#)
- [› Research](#)
- [› Athletics](#)
- [› Alumni](#)
- [› Events Calendar](#)





OAHU

GOOD FOOD

The central graphic features the word "OAHU" in large, stylized letters. Each letter is filled with a vibrant green pattern of various tropical fruits and vegetables, such as pineapples, papayas, and leafy greens. The letters have a thick white outline. Below "OAHU", the words "GOOD FOOD" are written in a clean, white, sans-serif font with a thin black outline. The background of the entire image is a blurred photograph of a person with traditional Polynesian tattoos, wearing a loincloth, and working with a large piece of bamboo or a similar natural material.

Buy Local. Eat Fresh.

Video: O'ahu Visitors Bureau

O'AHU GOOD FOOD PURCHASING PROGRAM



The Oahu Good Food Program uses the purchasing power of the City and County of Honolulu, large organizations, and the hospitality industry to support local farmers, ranchers and growers. Together, we commit to buying more locally grown fruits, vegetables, and proteins to help smaller farmers thrive, care for our place with sustainable farm practices, and create good jobs for our community.

**MORE ABOUT
THE PROGRAM**

<https://www.revitalizeoahu.org/oahugoodfood>

Why become a local purchasing partner?



- **Learn how to procure more nutritious and ethically-sourced ingredients and products.**
- **Contribute valuable data to the food system.**

- **Help Hawai'i reach its sustainability goals.**
- **Support more local food businesses and farms to revitalize and diversify Hawai'i's economy.**
- **Improve food access for vulnerable groups.**





THE FUTURE OF FOOD & AGRICULTURE IN HAWAI'I

— UNIVERSITY OF HAWAI'I SYSTEM —