

Kaua‘i Destination Management Action Plan

Sue Kanoho - Executive Director
Patti Ornellas - Destination Manager

KAUA'I DESTINATION MANAGEMENT ACTION PLAN

2023 HI Now Holo Holo Series with Kainoa Carlson



Kaua'i Destination Management Action Plan

F. 1/G.4



F. 1/G.4

Mālama In Action – Rachel on the Road



National Tropical Botanical Gardens

F. 1



Ke Kumu O Hihinui Cultural Center

F. 1



Creative digital banners for all HI Now digital platforms

KAUA‘I DESTINATION MANAGEMENT ACTION PLAN

Hawaiian Culture Collaboration & Engagement



Makali‘i
C.1/C.2/C.6/C.7/G.1/G.3

Ke Kumu O Hihinui Cultural Center
Grand Hyatt Kaua‘i
C.1/C.2/C.6/C.7



Na Lamakū Ho‘okipa
Cultural Resources and Trainings
C.6/G.1/G.3

Kaua‘i Festivals & Events 2023 – c.4

- Waimea Town Celebration
- E Kanikapila Kākou
- Anaina Hou – Story Hui in the Park
- Hanapēpē Economic Alliance – Hanapēpē, Our Hawaiian Sense of Place

KAUA'I DESTINATION MANAGEMENT ACTION PLAN



G.2 / G.3

KAUA'I ISLAND - CONSCIOUS TRAVELER GUIDELINES

1 Hotel Hanalei Bay is committed to creating the most sustainable, beautiful and inspiring hotel experience possible. The following guidelines are intended to serve as a resource during your time here on the island of Kaua'i.

EXPLORE KAUA'I RESPONSIBLY

Ocean Safety

The north shore of Kaua'i in particular is famous for large surf and unseen rip currents, especially during the winter months. 1 Hotel Hanalei Bay highly recommends our guests should safely enjoy beaches with lifeguards and bathrooms available on-site. These locations include Kē'ē Beach*, Hā'ena Beach Park, Hanalei Bay, Anahola Beach Park, Keālia Beach Park, Lydgate Beach Park, Po'ipū Beach Park, Salt Pond Beach Park, and Kekaha Beach Park. Please refrain from touching monk seals, sea turtles, dolphins, coral etc. *Advanced reservations are required to enter Hā'ena Beach Park which includes Kē'ē Beach and Kalalau Trail. Make a reservation.

Conscious Traveler Guidelines 1 Hotel Hanalei Bay

Mālama Kaua'i Video Series – c.3 / G.5



Kaua'i Museum



National Tropical
Botanical Gardens



Mo'olelo Murals



Prince Kūhiō Park

KAUA'I DESTINATION MANAGEMENT ACTION PLAN

Community Partnerships



In 2022, Holo Holo Charters contributed to our Kaua'i community over \$75,000 of in-kind and financial donations to local organizations, non-profits, events and people in need.

Financial Donation: \$31,860
In-Kind Donation: \$44,121

We are proud to support all the excellent people and organizations who are committed to improving the lives and resources of our island community.

we ♥ 

HOLO-HOLO CHARTERS

Holo Holo Charters

Surfrider Foundation



Keoki's Paradise

Mālama 'Āina KEOKI'S PARADISE

11 AM - 1 PM AT KEOKI'S PARADISE
2360 Kiahuna Plantation Drive, Suite 77 Kōloa, HI 96756

JOIN US FOR PRESENTATIONS ABOUT HAWAIIAN CULTURE, CONSERVATION, NATIVE SPECIES, THE ENVIRONMENT, AND MORE!

RESERVATION REQUIRED
Call Keoki's Paradise at 808-242-7534 to save your spot!

- FEB. 8TH** Climate Change Impacts on Sea Turtles by Carryn Allen, PhD | NOAA Fisheries
- MAR. 7TH** Monk Seals of Po'ipū by Jamie Thompson | NOAA Fisheries with DLNR
- APR. 19TH** Rapid 'Ōhi'a Death by Kim S. Rogers | Kaua'i Invasive Species Committee
- MAY 24TH** Saving Kaua'i's Elusive Seabirds by Dilek Sahin | Kaua'i Endangered Seabird Recovery Project
- JUNE 7TH** Papahānaumokuākea - New Discoveries by Randall Kosaki, PhD | Research Ecologist NOAA Marine National Monument
- SEPT. 19TH** Presentation Topic TBD by Sam 'Ōhi'a Gon, PhD | Senior Scientist/Cultural Specialist Nature Conservancy, HI

* Dates may be subject to change



KEOKISPARADISE.COM

Monthly Mālama 'Āina Series



2022 Ho'oulu Award Recipient
Aunty Sabra Kauka



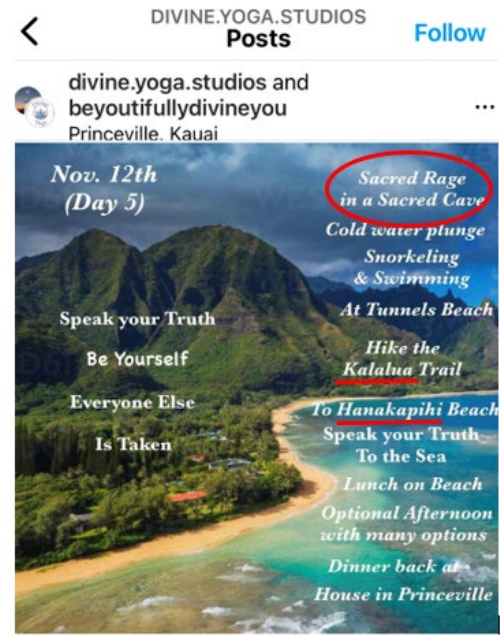
2023 Ho'oulu Award Recipient
Mike DeMotta

KAUA'I DESTINATION MANAGEMENT ACTION PLAN

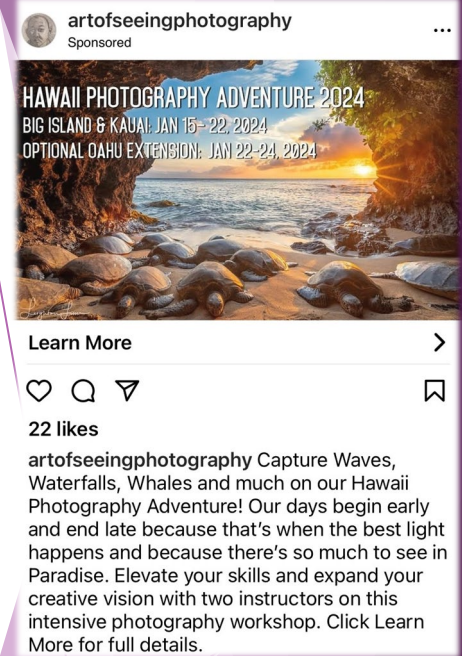
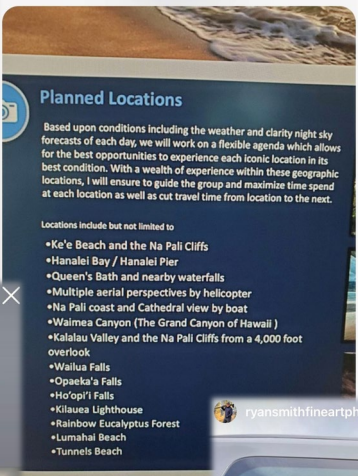
Challenges: Retreats & Workshops – A.1/B.1/B.3



Yoga Retreats



Photography Workshops



KAUA'I DESTINATION MANAGEMENT ACTION PLAN

Upcoming projects:

- Wildlife Summit – A.5/A.7
- Continued build-out of Makali'i - C.1/C.2/C.6/C.7/G.1/G.3
- Aloha For Kaua'i portal – H.1
- Data collection at Hotspots – D.1/D.5
- Ongoing community outreach: Holomua, Pacific Media Group, Hō'ike Community Television, Kaua'i DMAP Instagram page, community meetings/presentations – F.1



KAUA'I DESTINATION MANAGEMENT ACTION PLAN



Alakoko



KAUA'I
VISITORS BUREAU™

Sue Kanoho
Executive Director
skanoho@hvcb.org

Patti Ornellas
Destination Manager
patti@hvcb.org



The Hanalei Initiative

Community-led, Government-supported

Our mission is to identify community needs and implement solutions for Kauai's northshore.



Mina Morita President



Amy Frazier Vice-President



Monica Belz Director



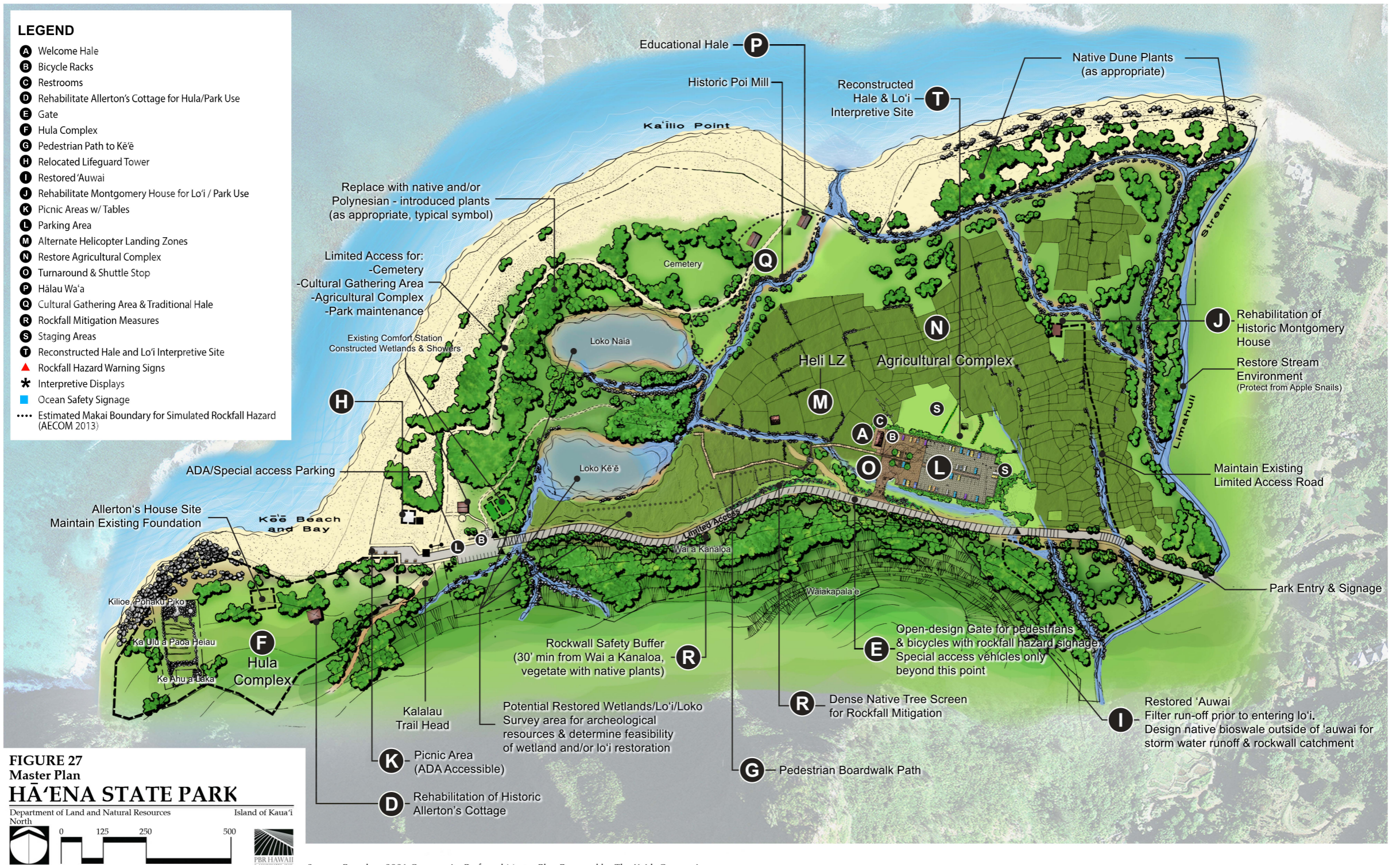
Mason Chock Director



Megan McCullough
Secretary



Alanna Bauman
Treasurer



2021 BLNR approved of a revocable permit to provide the Hui Makaainana o Makana the opportunity to manage the Haena State Park, and in turn enable the Hui to contract The Hanalei Initiative to manage the park Integrated Access System.

Let's Go Hā'ena

Day Use Availability

Please select your day and type of access

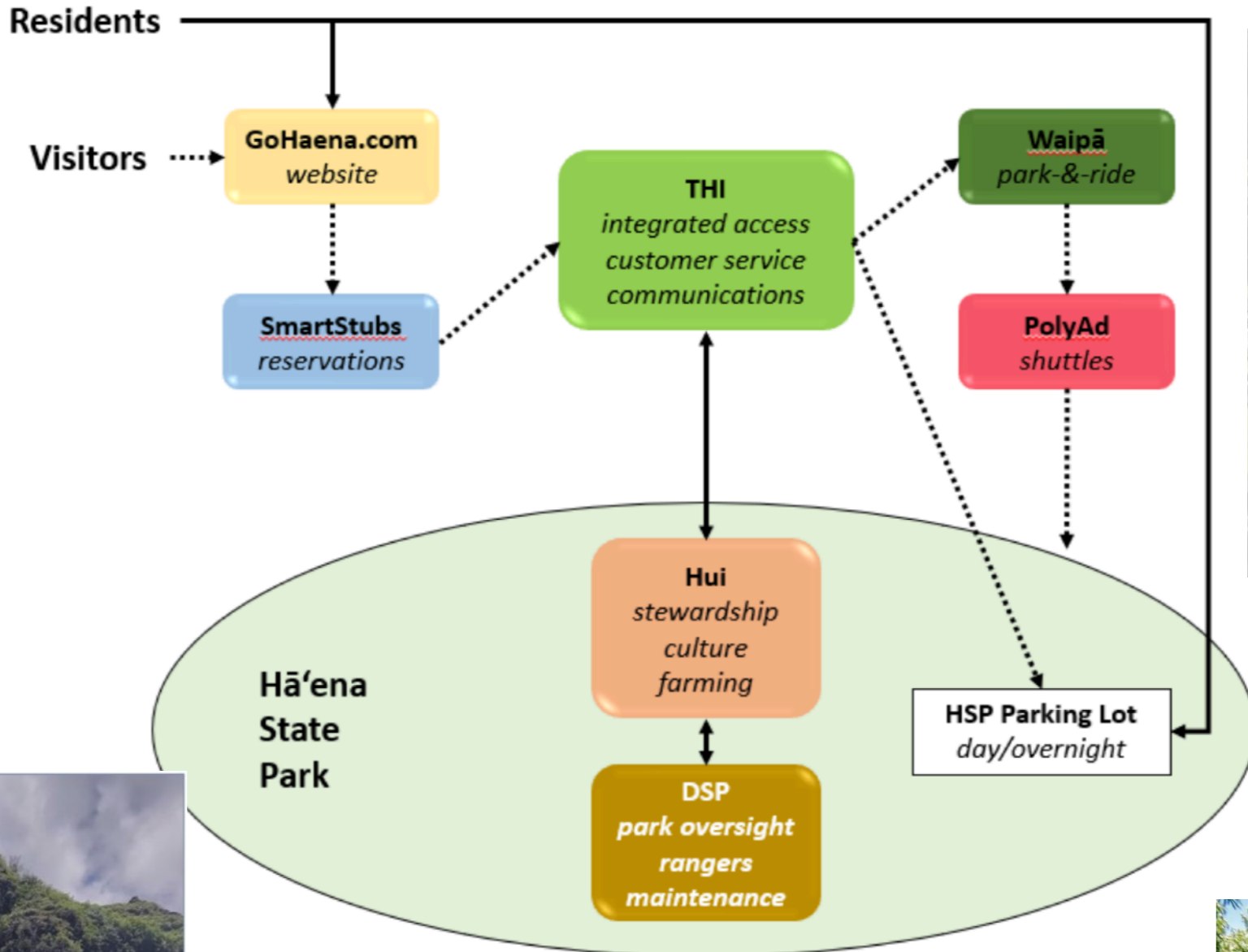
02-20-2023

	SHUTTLE + PASS	PARKING + PASS	PASS ONLY
Feb 20, 2023	●	⊗	⊗
Feb 21, 2023	●	⊗	⊗
Feb 22, 2023	●	⊗	⊗
Feb 23, 2023	●	⊗	⊗
Feb 24, 2023	●	⊗	⊗
Feb 25, 2023	●	⊗	⊗
Feb 26, 2023	●	⊗	⊗

BACK

CONTINUE

ver: 0.1.56





IMPORTANT [Legacy real-time page](#)

7 days 30 days 1 year

Hanakapiai Stream Abv Hanakapiai Falls, Kauai, HI - 16114800

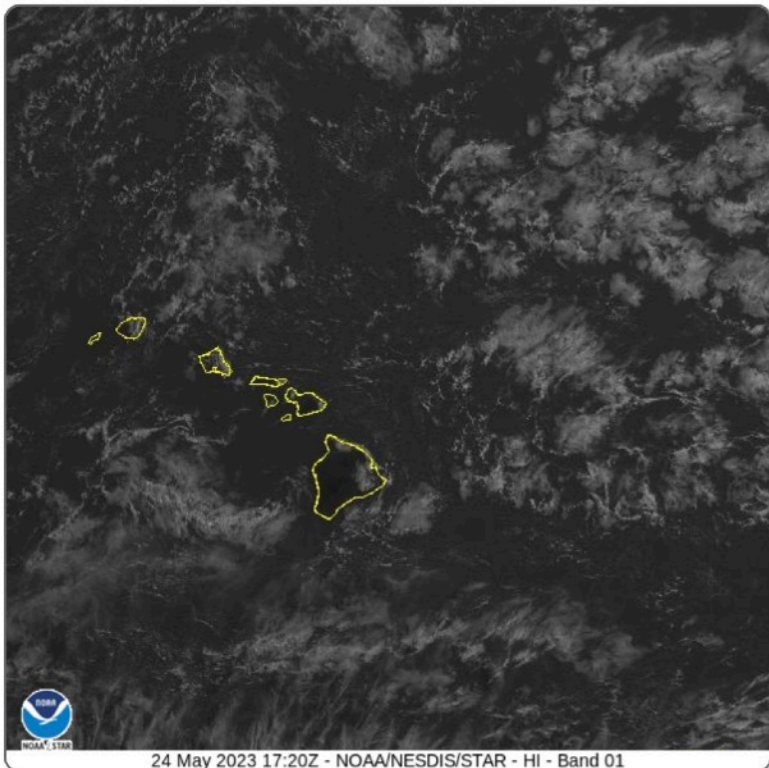
May 17, 2023 - May 24, 2023

Gage height, ft 287893

1.31 ft - May 24, 2023 10:50:00 AM HST



Band 1 - 0.47 μm - Blue - Visible - 24 May 2023 - 1720 UTC





E Nihi Ka Hele

Tread Softly

Hā'ena State Park Master Plan
Over 2 decades, Hawaii State Parks worked with stakeholders and the community to plan for better management and care of the park's significant cultural and natural resources. Historic flooding in April 2018 caused serious damage to roads and structures all over the north shore, but also provided an opportunity for the master plan to be implemented, with the reduced parking area, boardwalk and reservation system in place when the park re-opened in 2019.

Community Lauilima
The north shore has a strong heritage of lauilima (many hands working together). Hui Māka'āinana O Makana and Limahuli Garden (NTSG) worked with the state to bring back community fishery management along the state park coastline as well as land farming in the state park. With support from the above partners as well as the Waipā Foundation, the Hanalei Initiative used the shuttle system to reduce frustrations and congestion in Hā'ena. Find links to all of these nonprofits at the QR code/link.

Support Local
By riding the shuttle today, you are already part of a community driven solution...mahalo!

Walk Lightly
Please respect cultural spaces. More ways to be a part of our community lauilima:
• Hike on public trails only
• Leave areas better than you find them.
• Only use reef safe sunscreen.
• Don't walk on or touch coral reef.

Give back
Donate or volunteer. Nonprofits do great work!

Buy Local!
We especially recommend:
• Waipā Farmer Market here Tuesday afternoons.
• Limahuli Garden visitor center gift shop.
• Local merchants & businesses.

TODAY'S PARK CONDITIONS

SAFETY IS NO ACCIDENT. Hā'ena State Park is a remote paradise. Safety and awareness of changing conditions keep your visit fun, memorable and safe.

HEED WARNINGS. Only swim at lifeguarded beaches.

WAVES COME IN SETS. It can look calm for up to 20 minutes between sets of dangerous waves.

WHEN IN DOUBT - DON'T GO OUT! Injuries and deaths have occurred on Kōkua trails and beaches.

Park Open:

Swimming:

Hiking:

Weather
Visit hawaii.gov/conditions for current weather/surf and more.

Inform. Improve. Inspire.
HanaleiInitiative.org

Aloha and Welcome to Hā'ena State Park

1. You are here
Boardwalk - .3 Miles to beach and Kalalau trailhead.

2. Lo'i Kalo
Hui Māka'āinana o Makana Taro Farm.

3. Lua - Restrooms
Outdoor showers available.

4. Kalalau Trailhead
Hanakapi'a Beach 2 miles. Hanakapi'a Falls 4 miles.

5. Kē'ē Beach
Check in with lifeguard - if in doubt don't go out!

Stay on designated paths and avoid stepping on native plants. Please do not disturb the native waterbirds.

Pets and drones are a threat to the native waterbirds in the park.

Smoking and alcohol are not allowed in any of our State Parks.

Camping available by permit only, and only in Kalalau.

Open fires damage our beaches and dunes. Please put litter in trash receptacles and recycle.

KŌKUA & PACK OUT WHAT YOU PACK IN!

E Nihi ka Hele "tread lightly"

LEGEND
 BEACH TRAIL (dashed line)
 BOARDWALK TRAIL (solid line)
 ALTERNATE ADA ACCESS (dotted line)
 HIKING TRAIL (dashed line with cross-ticks)
 BEACH (wavy line)
 SERVICE ROAD (NO ACCESS) (solid line with cross-ticks)





