

TOURISM UPDATES

www.hawaii tourism authority.org/news/special-alert/

HELPFUL LINKS

Hawai'i County Civil Defense → www.hawaii county.gov/active-alerts

Hawai'i County Eruption Map → <https://goo.gl/i7RbrB>

Hawaiian Volcano Observatory / USGS → <https://on.doi.gov/2FEPVbm>

Volcano Watch Updates → <https://on.doi.gov/2r8G4zE>

Hawai'i Volcanoes National Park → <https://www.nps.gov/havo/planyourvisit/lava2.htm>

Volcanic Ash Guide → <https://bit.ly/2lJlqBV>

SO2 Measurement Map, Department of Health → <http://hiso2index.info/>

General Air Quality / Air Now → <https://bit.ly/2l33ixd>

State of Hawai'i Interagency Vog Info Dashboard → www.ivhnh.org/vog

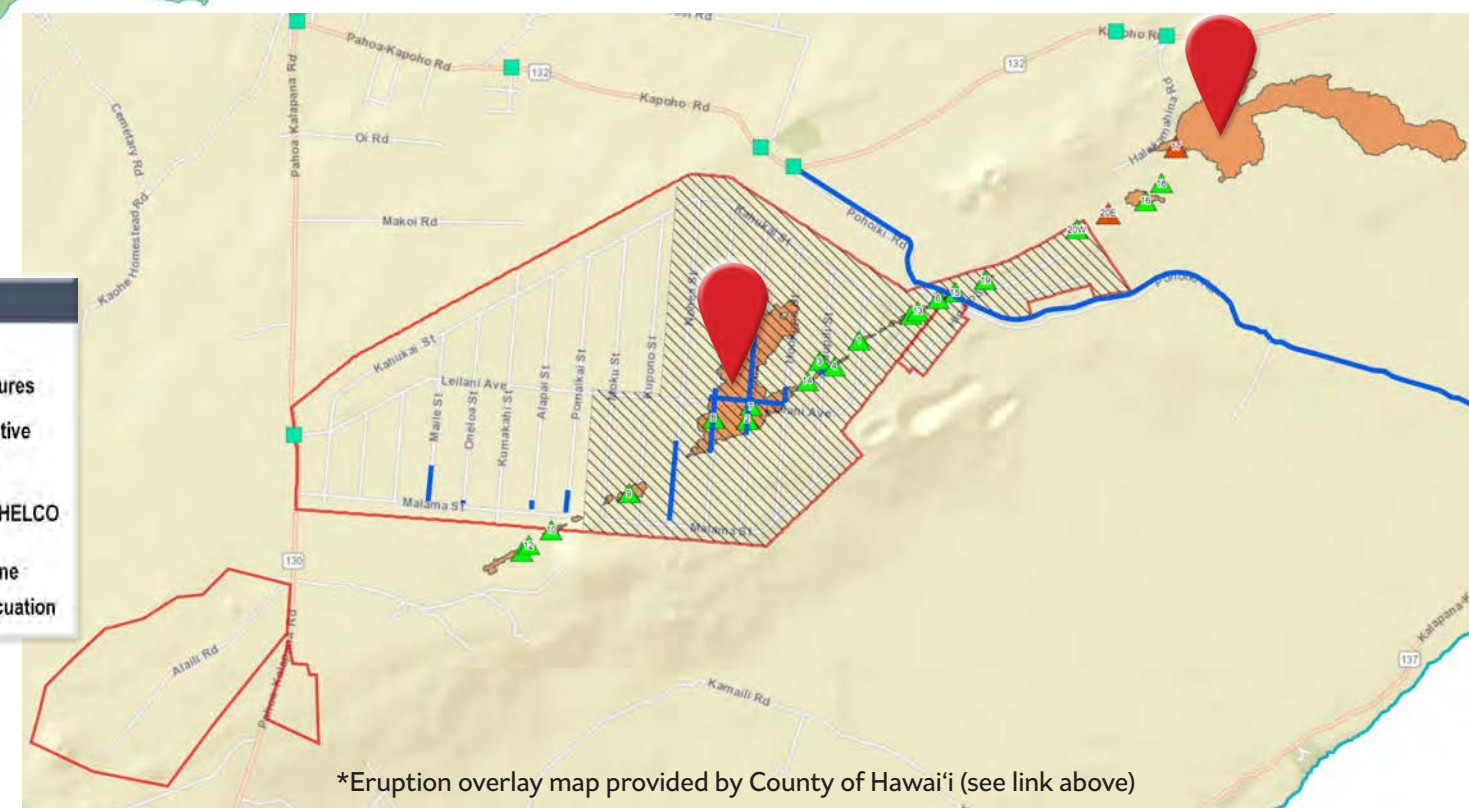
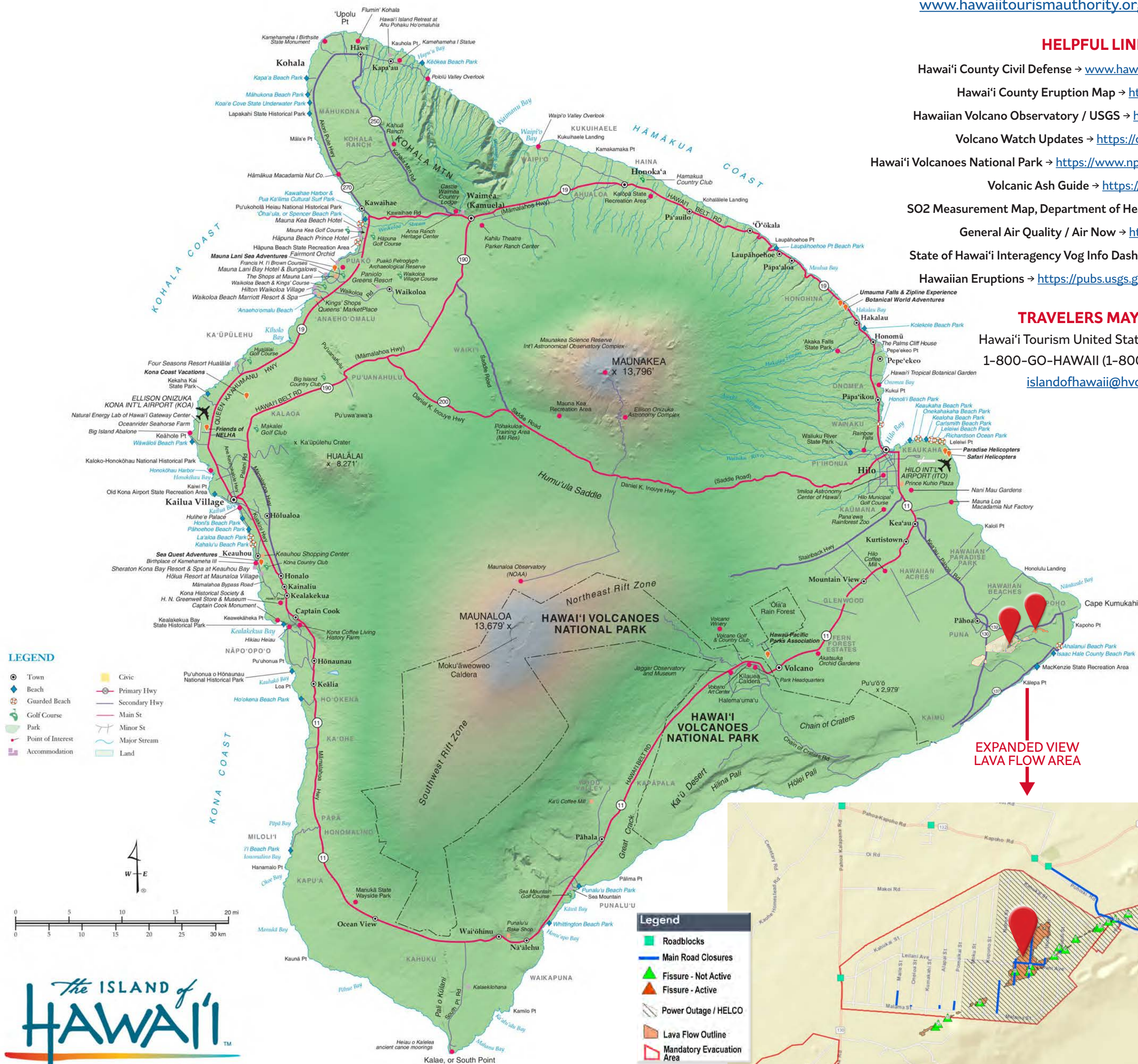
Hawaiian Eruptions → <https://pubs.usgs.gov/gip/hawaii.page26.html>

TRAVELERS MAY CALL

Hawai'i Tourism United States Call Center

1-800-GO-HAWAII (1-800-464-2924)

islandofhawaii@hvcb.org



*Eruption overlay map provided by County of Hawai'i (see link above)

The ISLAND of HAWAII™
One of the HAWAIIAN ISLANDS