



STATE OF HAWAII • DEPARTMENT OF BUSINESS,
ECONOMIC DEVELOPMENT & TOURISM

October 2024 Hawai'i Hotel Performance Report

Hawai'i hotels statewide reported lower occupancy, average daily rate (ADR) and revenue per available room (RevPAR) in October 2024 compared to October 2023. When compared to pre-pandemic October 2019, statewide ADR and RevPAR were higher in October 2024, but occupancy was lower.

Statewide RevPAR in October 2024 was \$227 (-11.7%), with ADR at \$322 (-6.7%) and occupancy of 70.4 percent (-4.0 percentage points) compared to October 2023 (Figure 1). Compared with October 2019, RevPAR was 11.8 percent higher, driven by higher ADR (+26.1%) which offset lower occupancy (-9.0 percentage points) (Figure 3).

The report's findings utilized data compiled by STR, Inc., which conducts the largest and most comprehensive survey of hotel properties in the Hawaiian Islands. For October 2024, the survey included 170 properties representing 48,222 rooms, or 85.8 percent of all lodging properties with 20 rooms or more in the Hawaiian Islands, including those offering full service, limited service, and condominium hotels. Vacation rental and timeshare properties were not included in this survey.

Statewide Hawai'i hotel room revenues totaled \$395.2 million (-11.5% vs. 2023, +17.1% vs. 2019) in October 2024. Room demand was 1.2 million room nights (-5.2% vs. 2023, -7.2% vs. 2019) and room supply was 1.7 million room nights (+0.1% vs. 2023, +4.7% vs. 2019) (Figure 2).

Luxury Class properties earned RevPAR of \$396 (-1.3% vs. 2023, +12.6% vs. 2019), with ADR at \$693 (+1.4% vs. 2023, +45.6% vs. 2019) and occupancy of 57.2 percent (-1.6 percentage points vs. 2023, -16.7 percentage points vs. 2019). Midscale & Economy Class properties earned RevPAR of \$148 (-5.7% vs. 2023, +13.5% vs. 2019) with ADR at \$203 (-7.1% vs. 2023, +26.0% vs. 2019) and occupancy of 73.1 percent (+1.1 percentage points vs. 2023, -8.1 percentage points vs. 2019).

Maui County hotels continued to be impacted by the August 8, 2023, wildfires. Maui County hotels achieved RevPAR of \$253 (-24.9% vs. 2023, -1.7% vs. 2019), with ADR at \$462 (-8.7% vs. 2023, +36.9% vs. 2019) and occupancy of 54.9 percent (-11.8 percentage points vs. 2023, -21.5 percentage points vs. 2019). Maui's luxury resort region of Wailea had RevPAR of \$378 (-11.7% vs. 2023, -14.5% vs. 2019), with ADR at \$635 (-3.8% vs. 2023, +27.0% vs. 2019) and occupancy of 59.5 percent (-5.3 percentage points vs. 2023, -28.9 percentage points vs. 2019). The Lahaina/Kā'anapali/Kapalua region had RevPAR of \$203 (-32.9% vs. 2023, -5.1% vs. 2019), ADR at \$387 (-15.7% vs. 2023, +33.7% vs. 2019) and occupancy of 52.5 percent (-13.5 percentage points vs. 2023, -21.5 percentage points vs. 2019).

Kaua'i hotels led the counties in October 2024 RevPAR at \$278 (-5.7% vs. 2023, +51.7% vs. 2019), with ADR at \$376 (-3.5% vs. 2023, +48.1% vs. 2019) and occupancy of 74.0 percent (-1.7 percentage points vs. 2023, +1.8 percentage points vs. 2019).

Hotels on the island of Hawai'i reported RevPAR at \$246 (-6.9% vs. 2023, +39.4% vs. 2019), with ADR at \$374 (-3.4% vs. 2023, +57.0% vs. 2019), and occupancy of 65.7 percent (-2.5 percentage points vs. 2023, -8.3 percentage points vs. 2019). Kohala Coast hotels earned RevPAR of \$319

(-13.4% vs. 2023, +36.1% vs. 2019), with ADR at \$481 (-3.7% vs. 2023, +50.1% vs. 2019), and occupancy of 66.3 percent (-7.4 percentage points vs. 2023, -6.8 percentage points vs. 2019).

O'ahu hotels reported RevPAR of \$203 (-5.1% vs. 2023, +7.4% vs. 2019) in October, ADR at \$262 (-3.4% vs. 2023, +14.7% vs. 2019) and occupancy of 77.5 percent (-1.4 percentage points vs. 2023, -5.3 percentage points vs. 2019). Waikīkī hotels earned RevPAR of \$196 (-5.1% vs. 2023, +4.0% vs. 2019), with ADR at \$251 (-3.6% vs. 2023, +11.0% vs. 2019) and occupancy of 78.1 percent (-1.3 percentage points vs. 2023, -5.2 percentage points vs. 2019).

Tables of hotel performance statistics, including data presented in the report are available for viewing online at: <https://www.hawaiiauthority.org/research/infrastructure-research/>

About the Hawai'i Hotel Performance Report

The Hawai'i Hotel Performance Report is produced using hotel survey data compiled by STR, Inc., the largest survey of its kind in Hawai'i. The survey generally excludes properties with under 20 lodging units, such as small bed and breakfasts, youth hostels, single-family vacation rentals, cottages, individually rented vacation condominiums and sold timeshare units no longer available for hotel use. The data has been weighted both geographically and by class of property to compensate for any over and/or under representation of hotel survey participants by location and type.

For October 2024, the survey included 170 properties representing 48,222 rooms, or 85.8 percent of all lodging properties with 20 rooms or more in the Hawaiian Islands, including full service, limited service, and condominium hotels. The October survey included 84 properties on O'ahu, representing 29,791 rooms (96.1%); 41 properties in the County of Maui, representing 9,600 rooms (72.0%); 23 properties on the island of Hawai'i, representing 5,173 rooms (77.5%); and 22 properties on Kaua'i, representing 3,658 rooms (71.1%).

About the State of Hawai'i Department of Business, Economic Development & Tourism

The State of Hawai'i Department of Business, Economic Development & Tourism (DBEDT) is Hawai'i's resource center for economic and statistical data, business development opportunities, energy and conservation information, as well as foreign trade advantages. DBEDT's mission is to achieve a Hawai'i economy that embraces innovation and is globally competitive, dynamic and productive, providing opportunities for all Hawai'i's citizens. Through its attached agencies, the department fosters planned community development, creates affordable workforce housing units in high-quality living environments and promotes innovation sector job growth.

Figure 1: Hawai'i Hotel Performance October 2024

	Occupancy %			Average Daily Rate			RevPAR		
	2024	2023	Percentage Pt. Change	2024	2023	% Change	2024	2023	% Change
State of Hawai'i	70.4%	74.4%	-4.0%	\$322.20	\$345.16	-6.7%	\$226.93	\$256.90	-11.7%
Luxury Class	57.2%	58.8%	-1.6%	\$692.75	\$683.05	1.4%	\$396.07	\$401.49	-1.3%
Upper Upscale Class	73.5%	79.5%	-6.0%	\$304.92	\$331.40	-8.0%	\$224.26	\$263.57	-14.9%
Upscale Class	73.1%	78.6%	-5.5%	\$232.69	\$269.95	-13.8%	\$170.11	\$212.11	-19.8%
Upper Midscale Class	69.8%	69.5%	0.2%	\$193.60	\$242.72	-20.2%	\$135.08	\$168.77	-20.0%
Midscale & Economy Class	73.1%	71.9%	1.1%	\$203.02	\$218.64	-7.1%	\$148.32	\$157.23	-5.7%
O'ahu	77.5%	79.0%	-1.4%	\$261.67	\$270.89	-3.4%	\$202.90	\$213.89	-5.1%
Waikiki	78.1%	79.3%	-1.3%	\$251.33	\$260.62	-3.6%	\$196.24	\$206.76	-5.1%
Other O'ahu	74.7%	76.8%	-2.1%	\$319.00	\$330.70	-3.5%	\$238.24	\$254.09	-6.2%
O'ahu Luxury	56.3%	64.3%	-8.0%	\$625.15	\$623.43	0.3%	\$351.95	\$400.68	-12.2%
O'ahu Upper Upscale	79.4%	82.8%	-3.3%	\$273.77	\$283.67	-3.5%	\$217.43	\$234.75	-7.4%
O'ahu Upscale	83.6%	84.8%	-1.2%	\$200.72	\$202.84	-1.0%	\$167.79	\$171.95	-2.4%
O'ahu Upper Midscale	77.1%	66.2%	10.9%	\$167.87	\$168.14	-0.2%	\$129.45	\$111.37	16.2%
O'ahu Midscale & Economy	77.4%	72.5%	4.9%	\$143.98	\$148.94	-3.3%	\$111.48	\$107.96	3.3%
Maui County	54.9%	66.7%	-11.8%	\$461.94	\$506.04	-8.7%	\$253.49	\$337.45	-24.9%
Wailea	59.5%	64.9%	-5.3%	\$635.19	\$660.50	-3.8%	\$378.08	\$428.36	-11.7%
Lahaina/Kā'anapali/Kapalua	52.5%	66.0%	-13.5%	\$387.00	\$458.80	-15.7%	\$203.18	\$302.82	-32.9%
Other Maui County	57.6%	67.5%	-9.9%	\$539.92	\$561.34	-3.8%	\$310.92	\$378.92	-17.9%
Maui County Luxury	52.7%	50.8%	1.9%	\$760.53	\$754.56	0.8%	\$401.04	\$383.40	4.6%
Maui County Upper Upscale & Upscale	55.7%	72.0%	-16.2%	\$363.33	\$450.86	-19.4%	\$202.50	\$324.42	-37.6%
Island of Hawai'i	65.7%	68.2%	-2.5%	\$374.31	\$387.66	-3.4%	\$245.98	\$264.30	-6.9%
Kohala Coast	66.3%	73.7%	-7.4%	\$481.40	\$499.79	-3.7%	\$319.05	\$368.31	-13.4%
Kauai'i	74.0%	75.8%	-1.7%	\$375.62	\$389.07	-3.5%	\$278.12	\$294.79	-5.7%

Source: STR, Inc. © Copyright 2024 State of Hawai'i Department of Business, Economic Development & Tourism
Note: Samples for some classes and regions were insufficient for reporting purposes, but these data were included in island and statewide totals.

Figure 2: Hawai'i Hotel Performance by Measure October 2024

	Supply (room nights, thousands)			Demand (room nights, thousands)			Revenue (\$millions)		
	2024	2023	% Change	2024	2023	% Change	2024	2023	% Change
State of Hawai'i	1,741.5	1,739.0	0.1%	1,226.5	1,294.4	-5.2%	395.2	446.8	-11.5%
O'ahu	961.3	953.2	0.9%	745.4	752.6	-1.0%	195.0	203.9	-4.3%
Waikiki	808.8	809.6	-0.1%	631.5	642.3	-1.7%	158.7	167.4	-5.2%
Maui County	413.5	414.1	-0.1%	226.9	276.1	-17.8%	104.8	139.7	-25.0%
Wailea	76.2	76.3	-0.1%	45.4	49.5	-8.3%	28.8	32.7	-11.8%
Lahaina/Kā'anapali/ Kapalua	220.4	225.6	-2.3%	115.7	148.9	-22.3%	44.8	68.3	-34.5%
Island of Hawai'i	207.0	211.2	-2.0%	136.1	144.0	-5.5%	50.9	55.8	-8.8%
Kohala Coast	86.9	91.6	-5.1%	57.6	67.5	-14.6%	27.7	33.7	-17.8%
Kauai'i	159.6	160.5	-0.6%	118.2	121.6	-2.8%	44.4	47.3	-6.2%

Source: STR, Inc. © Copyright 2024 State of Hawai'i Department of Business, Economic Development & Tourism

Figure 3: Hawai'i Hotel Performance October 2024 vs. 2019

	Occupancy %			Average Daily Rate			RevPAR		
	2024	2019	Percentage Pt. Change	2024	2019	% Change	2024	2019	% Change
State of Hawai'i	70.4%	79.4%	-9.0%	\$322.20	\$255.49	26.1%	\$226.93	\$202.96	11.8%
Luxury Class	57.2%	73.9%	-16.7%	\$692.75	\$475.84	45.6%	\$396.07	\$351.64	12.6%
Upper Upscale Class	73.5%	80.0%	-6.5%	\$304.92	\$259.91	17.3%	\$224.26	\$207.94	7.8%
Upscale Class	73.1%	80.9%	-7.8%	\$232.69	\$199.28	16.8%	\$170.11	\$161.14	5.6%
Upper Midscale Class	69.8%	80.7%	-10.9%	\$193.60	\$155.67	24.4%	\$135.08	\$125.61	7.5%
Midscale & Economy Class	73.1%	81.2%	-8.1%	\$203.02	\$161.09	26.0%	\$148.32	\$130.72	13.5%
O'ahu	77.5%	82.8%	-5.3%	\$261.67	\$228.10	14.7%	\$202.90	\$188.90	7.4%
Waikiki	78.1%	83.3%	-5.2%	\$251.33	\$226.52	11.0%	\$196.24	\$188.64	4.0%
Other O'ahu	74.7%	80.1%	-5.4%	\$319.00	\$237.70	34.2%	\$238.24	\$190.43	25.1%
O'ahu Luxury	56.3%	72.9%	-16.6%	\$625.15	\$454.58	37.5%	\$351.95	\$331.53	6.2%
O'ahu Upper Upscale	79.4%	83.3%	-3.9%	\$273.77	\$249.92	9.5%	\$217.43	\$208.31	4.4%
O'ahu Upscale	83.6%	87.5%	-3.9%	\$200.72	\$194.15	3.4%	\$167.79	\$169.86	-1.2%
O'ahu Upper Midscale	77.1%	80.6%	-3.5%	\$167.87	\$150.89	11.3%	\$129.45	\$121.57	6.5%
O'ahu Midscale & Economy	77.4%	85.6%	-8.2%	\$143.98	\$125.90	14.4%	\$111.48	\$107.81	3.4%
Maui County	54.9%	76.4%	-21.5%	\$461.94	\$337.55	36.9%	\$253.49	\$257.82	-1.7%
Wailea	59.5%	88.4%	-28.9%	\$635.19	\$500.13	27.0%	\$378.08	\$442.31	-14.5%
Lahaina/Kā'anapali/Kapalua	52.5%	74.0%	-21.5%	\$387.00	\$289.47	33.7%	\$203.18	\$214.15	-5.1%
Other Maui County	57.6%	79.4%	-21.8%	\$539.92	\$393.92	37.1%	\$310.92	\$312.78	-0.6%
Maui County Luxury	52.7%	78.7%	-25.9%	\$760.53	\$512.30	48.5%	\$401.04	\$403.06	-0.5%
Maui County Upper Upscale & Upscale	55.7%	75.9%	-20.2%	\$363.33	\$278.67	30.4%	\$202.50	\$211.47	-4.2%
Island of Hawai'i	65.7%	74.0%	-8.3%	\$374.31	\$238.34	57.0%	\$245.98	\$176.49	39.4%
Kohala Coast	66.3%	73.1%	-6.8%	\$481.40	\$320.62	50.1%	\$319.05	\$234.36	36.1%
Kauai	74.0%	72.3%	1.8%	\$375.62	\$253.58	48.1%	\$278.12	\$183.30	51.7%

Source: STR, Inc. © Copyright 2024 State of Hawai'i Department of Business, Economic Development & Tourism
Note: Samples for some classes and regions were insufficient for reporting purposes, but these data were included in island and statewide totals.

Figure 4: Hawai'i Hotel Performance by Measure October 2024 vs. 2019

	Supply (room nights, thousands)			Demand (room nights, thousands)			Revenue (\$millions)		
	2024	2019	% Change	2024	2019	% Change	2024	2019	% Change
State of Hawai'i	1,741.5	1,663.2	4.7%	1,226.5	1,321.2	-7.2%	395.2	337.6	17.1%
O'ahu	961.3	946.8	1.5%	745.4	784.1	-4.9%	195.0	178.9	9.1%
Waikiki	808.8	808.9	0.0%	631.5	673.6	-6.3%	158.7	152.6	4.0%
Maui County	413.5	385.7	7.2%	226.9	294.6	-23.0%	104.8	99.4	5.4%
Wailea	76.2	68.0	12.0%	45.4	60.2	-24.6%	28.8	30.1	-4.2%
Lahaina/Kā'anapali/ Kapalua	220.4	214.9	2.6%	115.7	159.0	-27.2%	44.8	46.0	-2.7%
Island of Hawai'i	207.0	197.5	4.8%	136.1	146.3	-7.0%	50.9	34.9	46.1%
Kohala Coast	86.9	91.1	-4.6%	57.6	66.6	-13.5%	27.7	21.4	29.8%
Kauai	159.6	133.1	19.9%	118.2	96.2	22.8%	44.4	24.4	81.9%

Source: STR, Inc. © Copyright 2024 State of Hawai'i Department of Business, Economic Development & Tourism

Figure 5: Hawai'i Hotel Performance Year-to-Date October 2024

	Occupancy %			Average Daily Rate			RevPAR		
	2024	2023	Percentage Pt. Change	2024	2023	% Change	2024	2023	% Change
State of Hawai'i	74.0%	74.8%	-0.9%	\$360.50	\$373.98	-3.6%	\$266.65	\$279.92	-4.7%
Luxury Class	60.3%	59.5%	0.8%	\$797.77	\$817.61	-2.4%	\$480.73	\$486.18	-1.1%
Upper Upscale Class	77.8%	80.4%	-2.6%	\$335.20	\$350.55	-4.4%	\$260.80	\$281.97	-7.5%
Upscale Class	76.3%	75.9%	0.4%	\$255.12	\$271.60	-6.1%	\$194.65	\$206.17	-5.6%
Upper Midscale Class	71.6%	70.5%	1.1%	\$224.96	\$245.57	-8.4%	\$161.17	\$173.21	-7.0%
Midscale & Economy Class	76.0%	75.9%	0.1%	\$225.73	\$229.71	-1.7%	\$171.56	\$174.35	-1.6%
O'ahu	80.7%	80.3%	0.4%	\$283.09	\$278.78	1.5%	\$228.48	\$223.92	2.0%
Waikiki	81.4%	80.7%	0.7%	\$269.92	\$266.11	1.4%	\$219.64	\$214.80	2.3%
Other O'ahu	77.2%	78.1%	-0.9%	\$356.39	\$351.75	1.3%	\$275.19	\$274.73	0.2%
O'ahu Luxury	59.4%	63.2%	-3.8%	\$696.31	\$674.49	3.2%	\$413.94	\$426.58	-3.0%
O'ahu Upper Upscale	83.0%	83.6%	-0.5%	\$294.42	\$288.43	2.1%	\$244.50	\$241.09	1.4%
O'ahu Upscale	85.6%	84.6%	1.1%	\$212.90	\$209.16	1.8%	\$182.34	\$176.87	3.1%
O'ahu Upper Midscale	80.0%	70.1%	10.0%	\$178.03	\$176.27	1.0%	\$142.49	\$123.52	15.4%
O'ahu Midscale & Economy	80.1%	78.3%	1.8%	\$157.02	\$153.16	2.5%	\$125.77	\$119.97	4.8%
Maui County	62.0%	65.0%	-3.1%	\$535.99	\$599.79	-10.6%	\$332.23	\$390.07	-14.8%
Wailea	65.7%	61.3%	4.4%	\$741.65	\$793.96	-6.6%	\$487.46	\$487.06	0.1%
Lahaina/Kā'anapali/Kapalua	60.8%	67.0%	-6.2%	\$445.43	\$541.32	-17.7%	\$270.97	\$362.69	-25.3%
Other Maui County	63.3%	62.7%	0.7%	\$637.37	\$675.21	-5.6%	\$403.62	\$423.11	-4.6%
Maui County Luxury	56.1%	52.8%	3.3%	\$903.59	\$1,009.21	-10.5%	\$506.70	\$532.77	-4.9%
Maui County Upper Upscale & Upscale	64.2%	69.3%	-5.1%	\$425.41	\$501.86	-15.2%	\$272.95	\$347.68	-21.5%
Island of Hawai'i	66.7%	69.8%	-3.1%	\$420.48	\$411.04	2.3%	\$280.43	\$286.84	-2.2%
Kohala Coast	72.1%	74.2%	-2.1%	\$557.39	\$562.59	-0.9%	\$401.74	\$417.51	-3.8%
Kauai	74.0%	75.2%	-1.2%	\$415.73	\$409.66	1.5%	\$307.73	\$308.24	-0.2%

Source: STR, Inc. © Copyright 2024 State of Hawai'i Department of Business, Economic Development & Tourism
Note: Samples for some classes and regions were insufficient for reporting purposes, but these data were included in island and statewide totals.

Figure 6: Hawai'i Hotel Performance by Measure Year-to-Date October 2024

	Supply (thousands)			Demand (thousands)			Revenue (millions)		
	2024	2023	% Change	2024	2023	% Change	2024	2023	% Change
State of Hawai'i	17,059.4	17,040.0	0.1%	12,618.2	12,754.2	-1.1%	4,548.8	4,769.8	-4.6%
O'ahu	9,395.1	9,257.6	1.5%	7,582.8	7,435.9	2.0%	2,146.6	2,072.9	3.6%
Waikiki	7,899.2	7,849.8	0.6%	6,427.8	6,336.3	1.4%	1,735.0	1,686.2	2.9%
Maui County	4,056.6	4,174.9	-2.8%	2,514.5	2,715.1	-7.4%	1,347.7	1,628.5	-17.2%
Wailea	747.7	745.8	0.3%	491.4	457.5	7.4%	364.5	363.2	0.3%
Lahaina/Kā'anapali/Kapalua	2,183.1	2,282.8	-4.4%	1,328.0	1,529.5	-13.2%	591.5	827.9	-28.6%
Island of Hawai'i	2,041.3	2,037.7	0.2%	1,361.4	1,422.0	-4.3%	572.4	584.5	-2.1%
Kohala Coast	864.9	897.7	-3.7%	623.4	666.2	-6.4%	347.5	374.8	-7.3%
Kauai	1,566.4	1,569.8	-0.2%	1,159.4	1,181.2	-1.8%	482.0	483.9	-0.4%

Source: STR, Inc. © Copyright 2024 State of Hawai'i Department of Business, Economic Development & Tourism

Figure 7: Hawai'i Hotel Performance Year-to-Date October 2024 vs. 2019

	Occupancy %			Average Daily Rate			RevPAR		
	2024	2019	Percentage Pt. Change	2024	2019	% Change	2024	2019	% Change
State of Hawai'i	74.0%	81.1%	-7.1%	\$360.50	\$278.03	29.7%	\$266.65	\$225.43	18.3%
Luxury Class	60.3%	76.7%	-16.5%	\$797.77	\$550.39	44.9%	\$480.73	\$422.36	13.8%
Upper Upscale Class	77.8%	82.9%	-5.1%	\$335.20	\$277.47	20.8%	\$260.80	\$229.91	13.4%
Upscale Class	76.3%	78.9%	-2.6%	\$255.12	\$208.11	22.6%	\$194.65	\$164.18	18.6%
Upper Midscale Class	71.6%	83.9%	-12.3%	\$224.96	\$162.84	38.1%	\$161.17	\$136.67	17.9%
Midscale & Economy Class	76.0%	82.4%	-6.4%	\$225.73	\$172.28	31.0%	\$171.56	\$141.91	20.9%
O'ahu	80.7%	84.5%	-3.7%	\$283.09	\$237.42	19.2%	\$228.48	\$200.51	13.9%
Waikiki	81.4%	84.7%	-3.4%	\$269.92	\$232.69	16.0%	\$219.64	\$197.17	11.4%
Other O'ahu	77.2%	82.7%	-5.5%	\$356.39	\$266.74	33.6%	\$275.19	\$220.69	24.7%
O'ahu Luxury	59.4%	74.0%	-14.6%	\$696.31	\$487.84	42.7%	\$413.94	\$361.16	14.6%
O'ahu Upper Upscale	83.0%	85.7%	-2.7%	\$294.42	\$260.83	12.9%	\$244.50	\$223.58	9.4%
O'ahu Upscale	85.6%	85.5%	0.2%	\$212.90	\$195.57	8.9%	\$182.34	\$167.12	9.1%
O'ahu Upper Midscale	80.0%	84.3%	-4.3%	\$178.03	\$157.18	13.3%	\$142.49	\$132.50	7.5%
O'ahu Midscale & Economy	80.1%	87.7%	-7.6%	\$157.02	\$132.60	18.4%	\$125.77	\$116.26	8.2%
Maui County	62.0%	78.1%	-16.1%	\$535.99	\$391.01	37.1%	\$332.23	\$305.51	8.7%
Wailea	65.7%	89.2%	-23.4%	\$741.65	\$598.01	24.0%	\$487.46	\$533.18	-8.6%
Lahaina/Kā'anapali/Kapalua	60.8%	77.2%	-16.3%	\$445.43	\$329.81	35.1%	\$270.97	\$254.47	6.5%
Other Maui County	63.3%	79.4%	-16.1%	\$637.37	\$466.90	36.5%	\$403.62	\$370.62	8.9%
Maui County Luxury	56.1%	80.9%	-24.8%	\$903.59	\$630.64	43.3%	\$506.70	\$510.16	-0.7%
Maui County Upper Upscale & Upscale	64.2%	77.9%	-13.8%	\$425.41	\$310.04	37.2%	\$272.95	\$241.63	13.0%
Island of Hawai'i	66.7%	76.9%	-10.2%	\$420.48	\$261.05	61.1%	\$280.43	\$200.81	39.6%
Kohala Coast	72.1%	77.5%	-5.5%	\$557.39	\$369.10	51.0%	\$401.74	\$286.21	40.4%
Kauai	74.0%	72.6%	1.4%	\$415.73	\$280.28	48.3%	\$307.73	\$203.57	51.2%

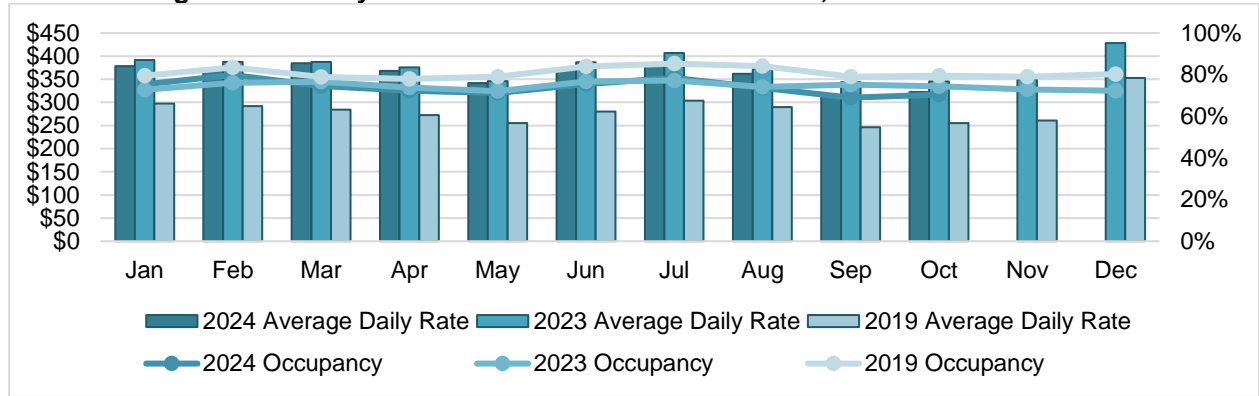
Source: STR, Inc. © Copyright 2024 State of Hawai'i Department of Business, Economic Development & Tourism
Note: Samples for some classes and regions were insufficient for reporting purposes, but these data were included in island and statewide totals.

Figure 8: Hawai'i Hotel Performance by Measure Year-to-Date 2024 vs. 2019

	Supply (thousands)			Demand (thousands)			Revenue (millions)		
	2024	2019	% Change	2024	2019	% Change	2024	2019	% Change
State of Hawai'i	17,059.4	16,404.1	4.0%	12,618.2	13,300.7	-5.1%	4,548.8	3,697.9	23.0%
O'ahu	9,395.1	9,224.5	1.8%	7,582.8	7,790.2	-2.7%	2,146.6	1,849.6	16.1%
Waikiki	7,899.2	7,915.9	-0.2%	6,427.8	6,707.5	-4.2%	1,735.0	1,560.8	11.2%
Maui County	4,056.6	3,847.5	5.4%	2,514.5	3,006.2	-16.4%	1,347.7	1,175.5	14.7%
Wailea	747.7	667.0	12.1%	491.4	594.7	-17.4%	364.5	355.6	2.5%
Lahaina/Kā'anapali/Kapalua	2,183.1	2,156.7	1.2%	1,328.0	1,664.1	-20.2%	591.5	548.8	7.8%
Island of Hawai'i	2,041.3	1,961.6	4.1%	1,361.4	1,508.9	-9.8%	572.4	393.9	45.3%
Kohala Coast	864.9	908.3	-4.8%	623.4	704.4	-11.5%	347.5	260.0	33.7%
Kauai	1,566.4	1,370.5	14.3%	1,159.4	995.4	16.5%	482.0	279.0	72.8%

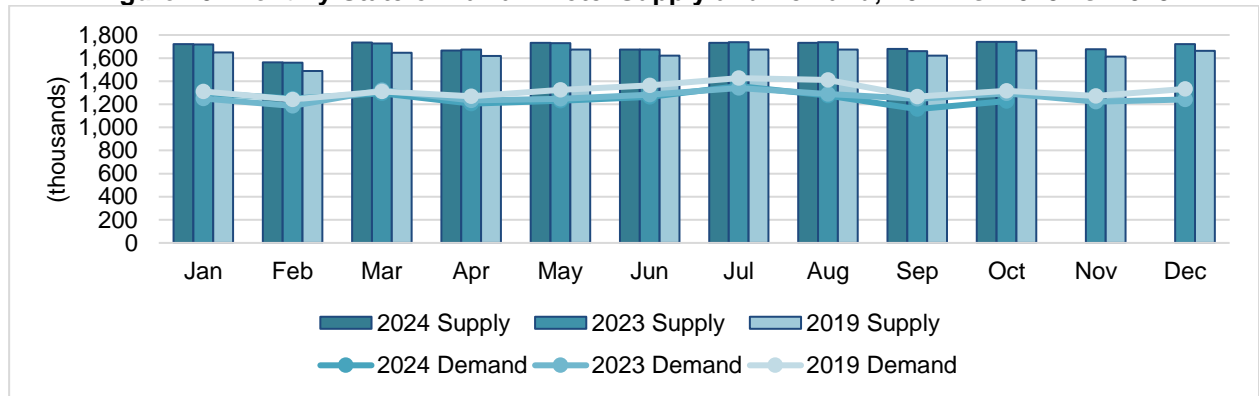
Source: STR, Inc. © Copyright 2024 State of Hawai'i Department of Business, Economic Development & Tourism

Figure 9: Monthly State of Hawai'i Hotel Performance, 2024 vs. 2023 vs. 2019



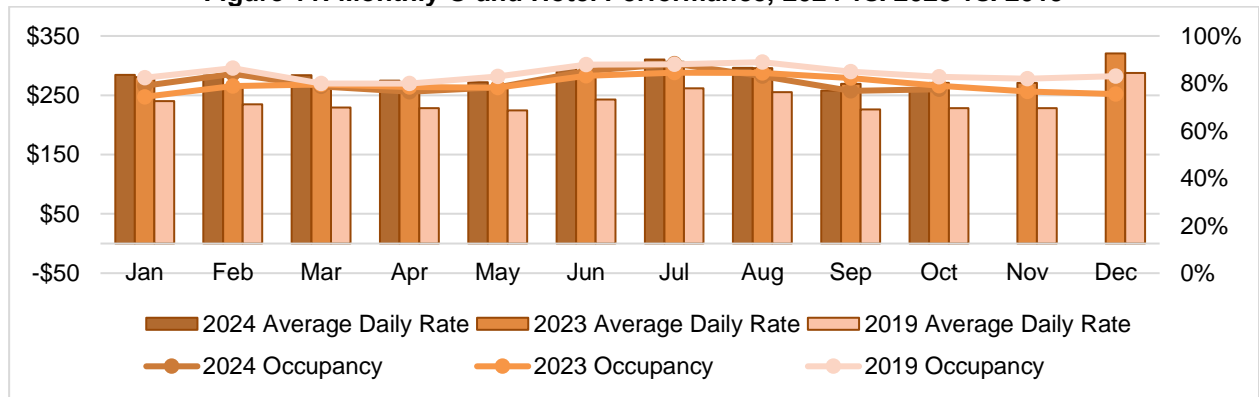
Source: STR, Inc. © Copyright 2024 State of Hawai'i Department of Business, Economic Development & Tourism

Figure 10: Monthly State of Hawai'i Hotel Supply and Demand, 2024 vs. 2023 vs. 2019



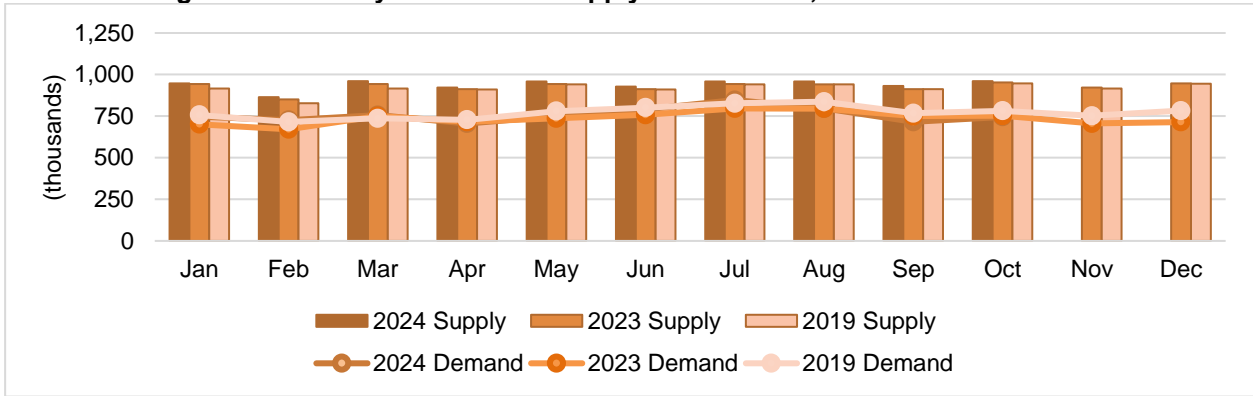
Source: STR, Inc. © Copyright 2024 State of Hawai'i Department of Business, Economic Development & Tourism

Figure 11: Monthly O'ahu Hotel Performance, 2024 vs. 2023 vs. 2019



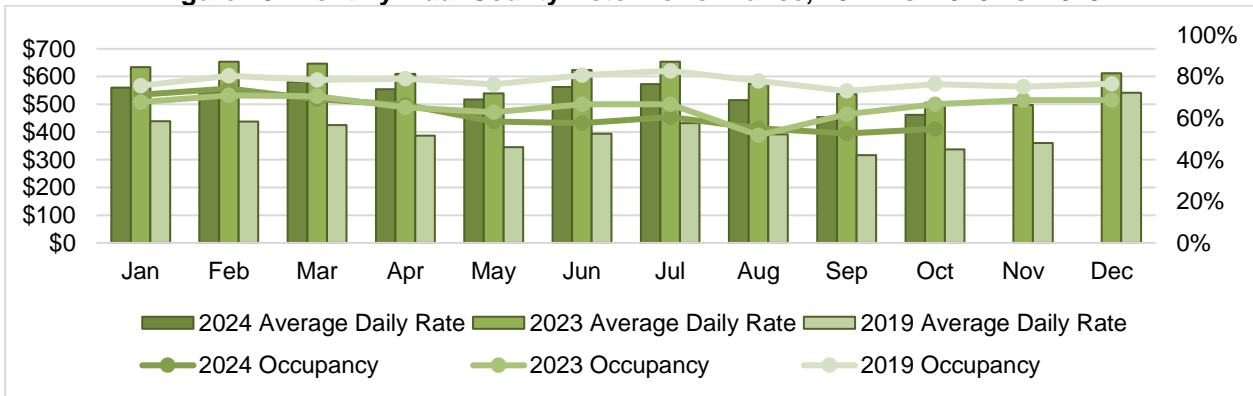
Source: STR, Inc. © Copyright 2024 State of Hawai'i Department of Business, Economic Development & Tourism

Figure 12: Monthly O'ahu Hotel Supply and Demand, 2024 vs. 2023 vs. 2019



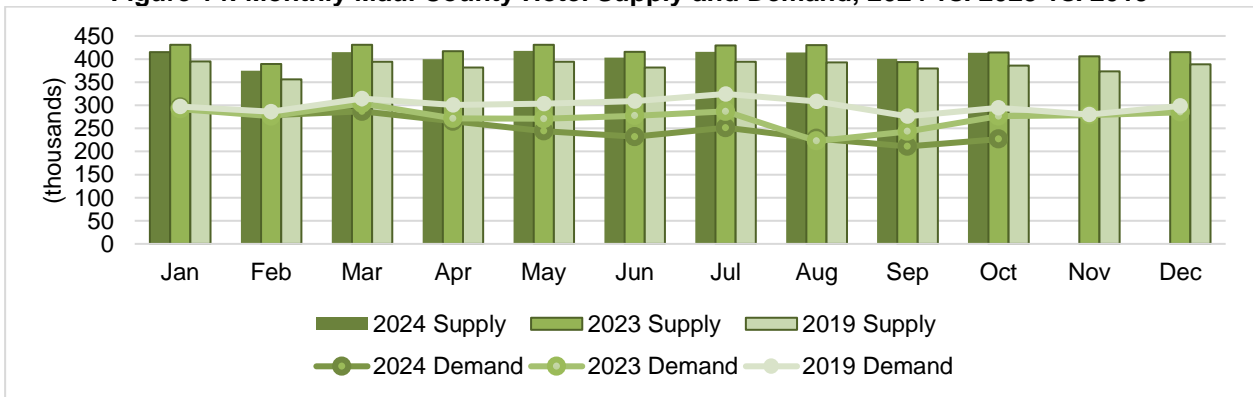
Source: STR, Inc. © Copyright 2024 State of Hawai'i Department of Business, Economic Development & Tourism

Figure 13: Monthly Maui County Hotel Performance, 2024 vs. 2023 vs. 2019



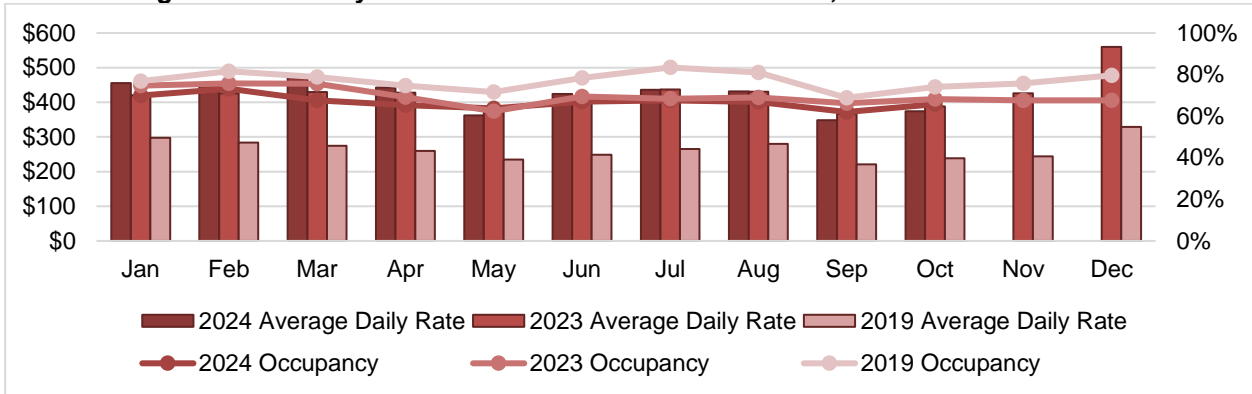
Source: STR, Inc. © Copyright 2024 State of Hawai'i Department of Business, Economic Development & Tourism

Figure 14: Monthly Maui County Hotel Supply and Demand, 2024 vs. 2023 vs. 2019



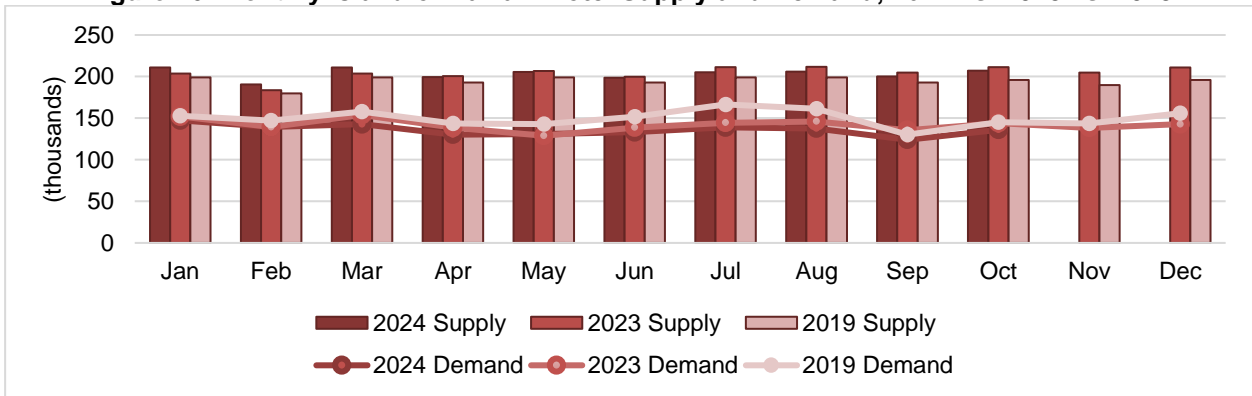
Source: STR, Inc. © Copyright 2024 State of Hawai'i Department of Business, Economic Development & Tourism

Figure 15: Monthly Island of Hawai'i Hotel Performance, 2024 vs. 2023 vs. 2019



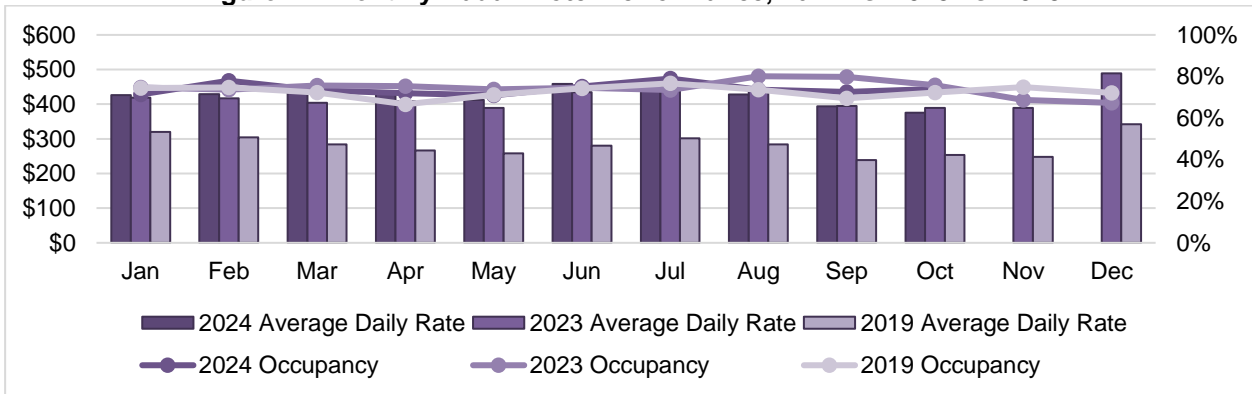
Source: STR, Inc. © Copyright 2024 State of Hawai'i Department of Business, Economic Development & Tourism

Figure 16: Monthly Island of Hawai'i Hotel Supply and Demand, 2024 vs. 2023 vs. 2019



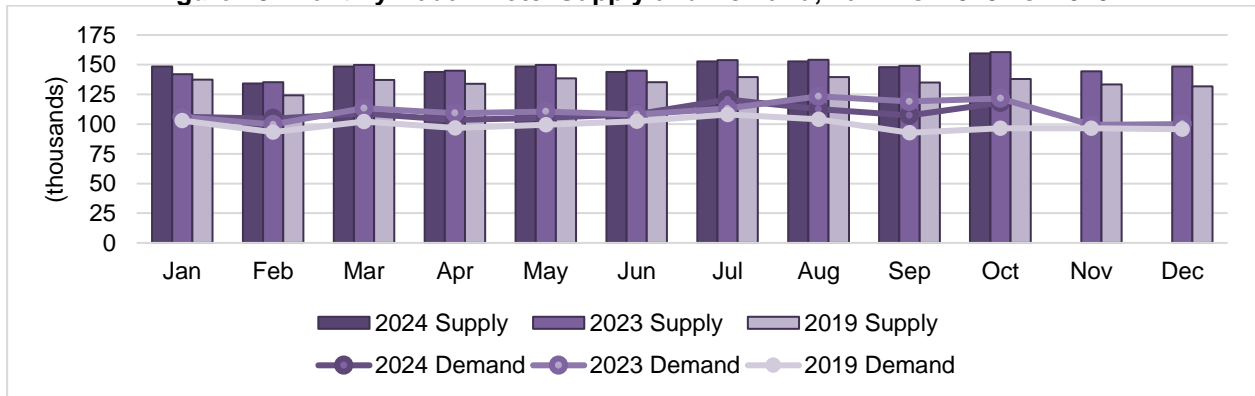
Source: STR, Inc. © Copyright 2024 State of Hawai'i Department of Business, Economic Development & Tourism

Figure 17: Monthly Kaua'i Hotel Performance, 2024 vs. 2023 vs. 2019



Source: STR, Inc. © Copyright 2024 State of Hawai'i Department of Business, Economic Development & Tourism

Figure 18: Monthly Kaua'i Hotel Supply and Demand, 2024 vs. 2023 vs. 2019



Source: STR, Inc. © Copyright 2024 State of Hawai'i Department of Business, Economic Development & Tourism