

TOURISM UPDATES

www.hawaii tourism authority.org/news/special-alert/

HELPFUL LINKS

Hawai'i County Civil Defense → www.hawaii county.gov/active-alerts

Hawai'i County Eruption Map → <https://goo.gl/i7RbrB>

Interagency Vog Information Dashboard: <http://www.ivhnh.org/vog>

[EPA Air Monitor Real Time Viewer](#) | [Current Conditions](#)

[VOG Forecast](#) | [Ashfall Forecast \(model\)](#) | [Volcanic Ash Guide](#)

Hawaiian Volcano Observatory / USGS → <https://on.doi.gov/2FEPVbM>

Volcano Watch Updates → <https://on.doi.gov/2r8G4zE>

Hawai'i Volcanoes National Park → <https://www.nps.gov/havo/playourvisit/lava2.htm>

Hawaiian Eruptions → <https://pubs.usgs.gov/gip/hawaii.page26.html>

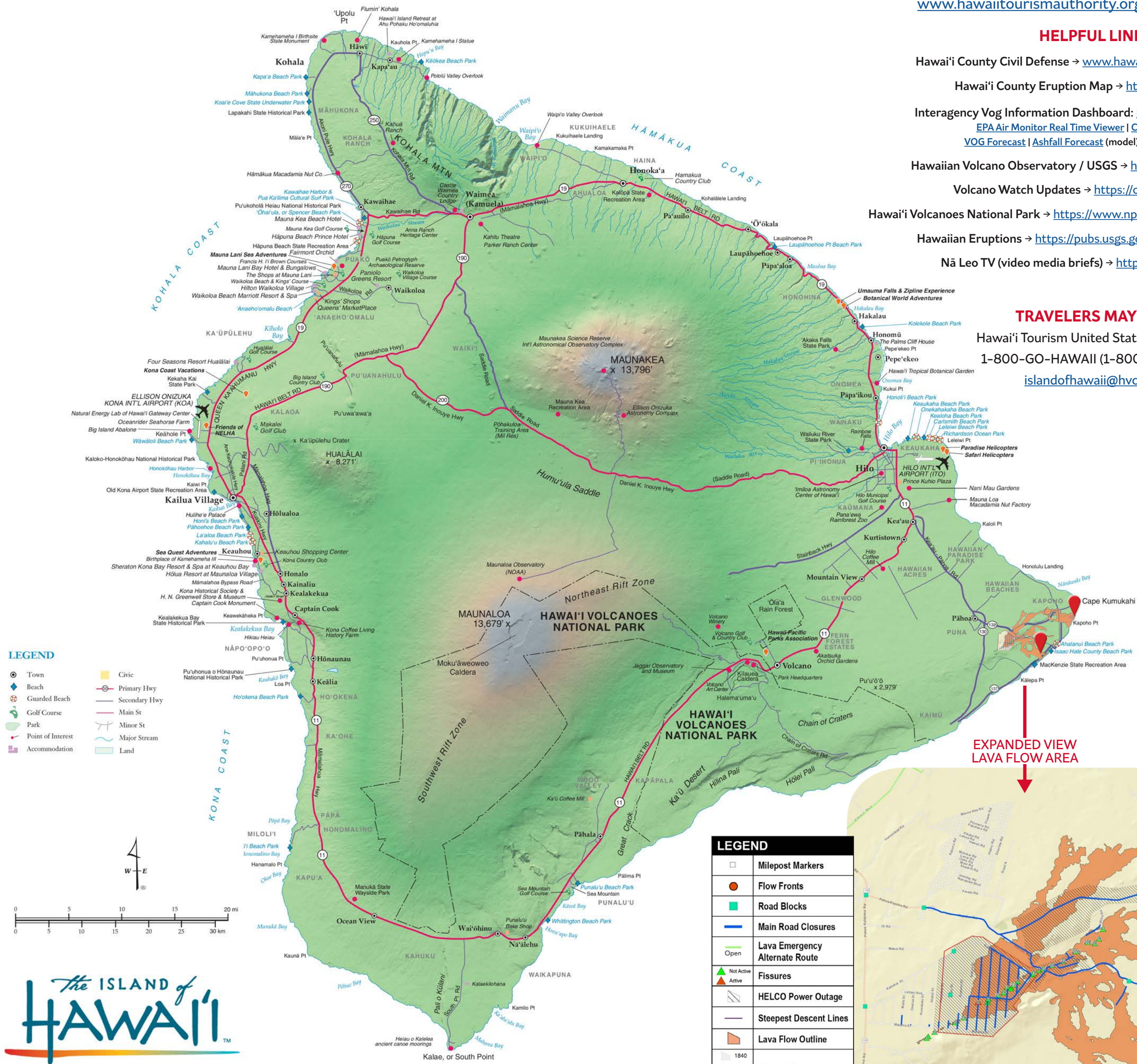
Nā Leo TV (video media briefs) → <http://www.naleo.tv/vod/>

TRAVELERS MAY CALL

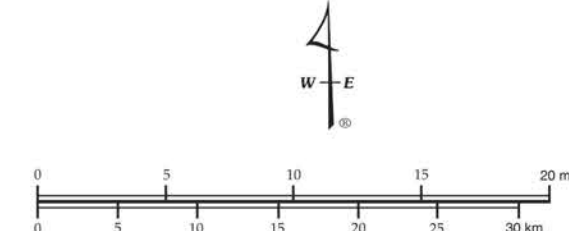
Hawai'i Tourism United States Call Center

1-800-GO-HAWAII (1-800-464-2924)

islandofhawaii@hvcb.org



- LEGEND**
- Town
 - ◆ Beach
 - ◆ Guarded Beach
 - ◆ Golf Course
 - Park
 - Point of Interest
 - Accommodation
 - Civic
 - Primary Hwy
 - Secondary Hwy
 - Main St
 - Minor St
 - Major Stream
 - Land

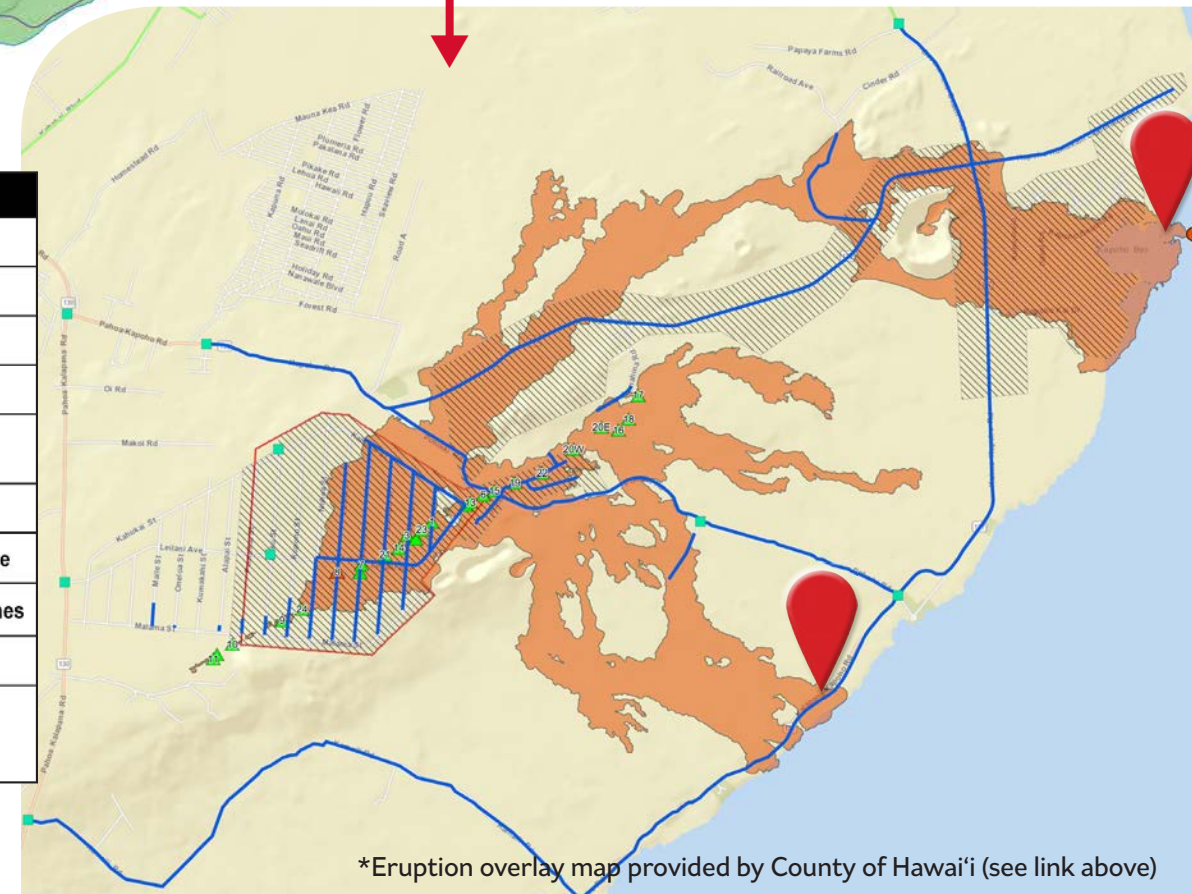


The ISLAND of
HAWAII
One of the HAWAIIAN ISLANDS

LEGEND

□	Milepost Markers
●	Flow Fronts
■	Road Blocks
—	Main Road Closures
—	Lava Emergency Alternate Route
▲ Not Active	Fissures
▲ Active	
■	HELCO Power Outage
—	Steepest Descent Lines
—	Lava Flow Outline
■ 1840	Historic Flows
■ 1955	
■ 1960	

**EXPANDED VIEW
LAVA FLOW AREA**



*Eruption overlay map provided by County of Hawai'i (see link above)