



GREEN PASSPORT

IMPROVING THE VISITOR EXPERIENCE AND PROTECTING OUR NATURAL HERITAGE





COMPARATIVE DISADVANTAGE: NATURAL CAPITAL INVESTMENT PER TOURIST



\$92

PALAU



\$188

GREAT BARRIER
REEF



\$137

NEW ZEALAND



\$373

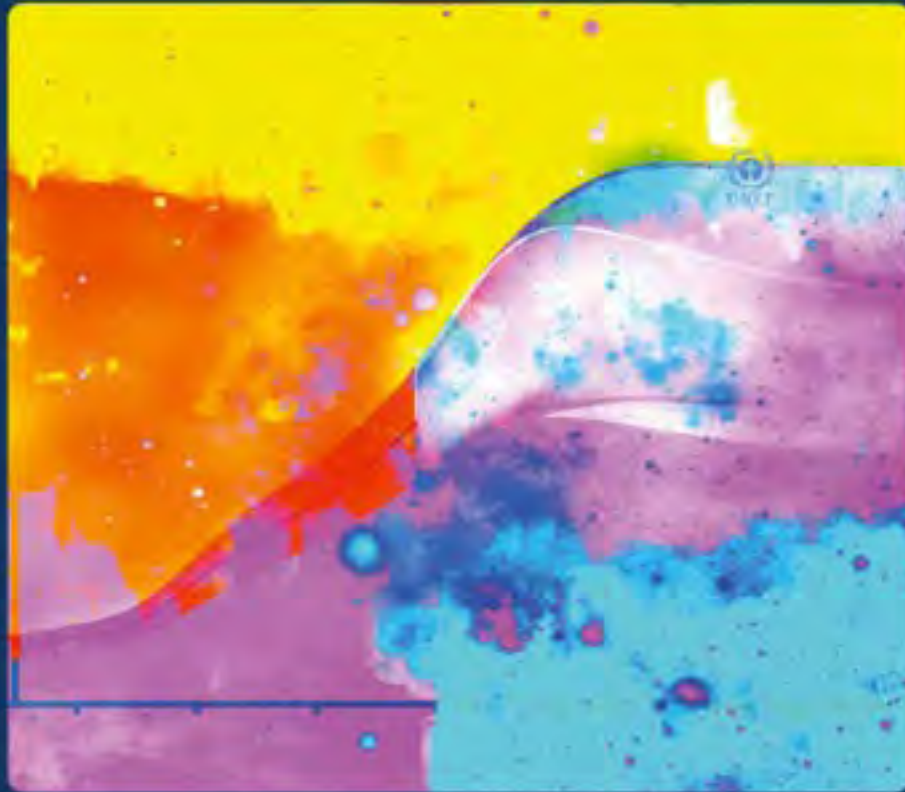
GALAPAGOS



Hawai'i
invests
only
\$9

per tourist

WHAT THE SCIENCE SAYS

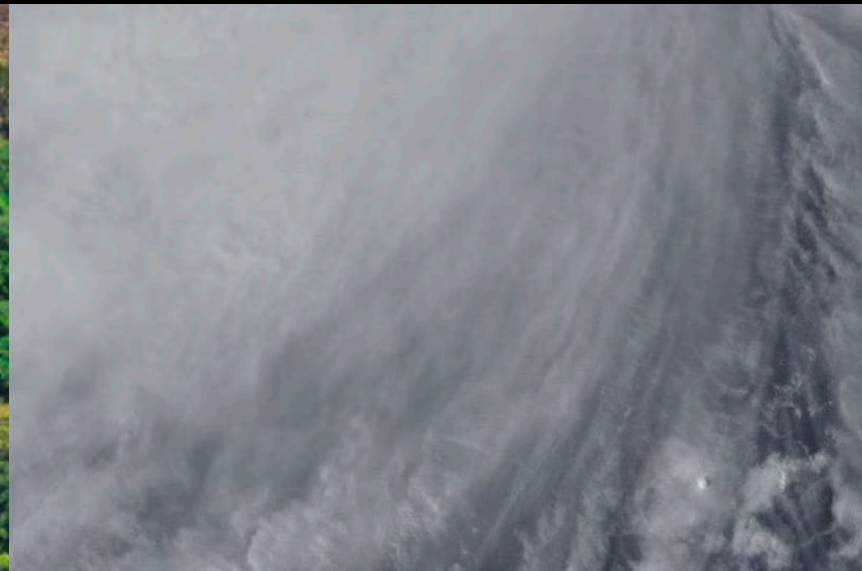
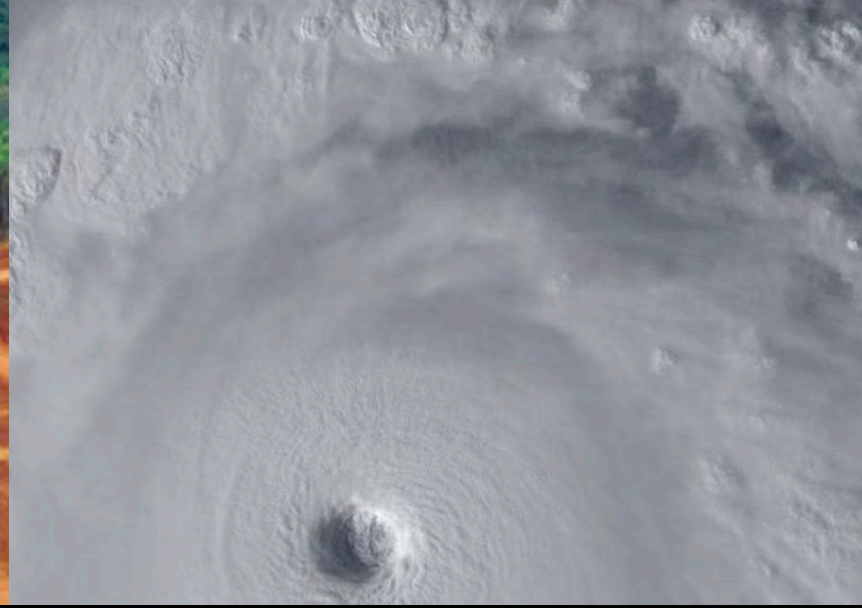


ipcc
INTERGOVERNMENTAL PANEL ON climate change

WHO UNEP

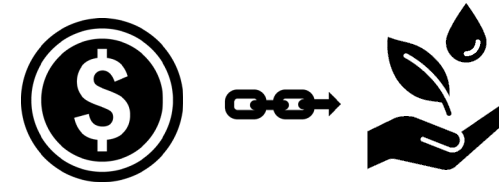
Global Warming of 1.5 °C

An IPCC special report on the impacts of global warming of 1.5 °C above pre-industrial levels and related global greenhouse gas emission pathways, in the context of strengthening the global response to the threat of climate change, sustainable development, and efforts to eradicate poverty.





FUNDING CONSERVATION



Current Funding for Conservation

535 million
dollars/
year

Annual Need for Conservation

893 million
dollars/
year

Gap in Conservation Finance

358 million
dollars
/
year





Children of Palau,
I take this pledge,
as your guest,
to preserve and protect
your beautiful and unique
island home.

I vow to tread lightly,
act kindly and
explore mindfully.

I shall not take
what is not given.

I shall not harm
what does not harm me.

The only footprints
I shall leave are those
that will wash away.

J. J. J.

PALAU PLEDGE

REPUBLIC OF PALAU • IMMIGRATION • ARRIVAL

CARRIER:
UA157

STATUS:
227

ADMITTED UNTIL:
JAN 05 2018

DATE:
DEC 07 2017

-10° 14° -5° 0° 5° 10° 15° 20° 25° 30° 35°
14° 23° 32° 41° 50° 59° 68° 77° 86° 95°



From our elders we have learned we are part of the environment, not above it. The life, lands, and waters are more than just our surroundings, they are our family.

From our children we will learn that Hawai'i is not inherited from our ancestors but borrowed from our future generations.

So when you are welcomed here, you become part of this *'ohana* that is responsible for us and our island home too. Just as we, *nā keiki o ka 'āina*, the children of Hawai'i, pledge to care for these islands, we ask that you make this pledge to us:

For a rare and endangered place, where a destructive foreign species is introduced every day—I will bring only what is invited and be mindful of where I explore.

For an island community that defines wealth not by what is kept, but what is shared—I will give my respect and leave what is not mine to take.

For an indigenous culture that has evolved with these islands, both unique and intertwined in their existence—I will experience sacred places and practices with a bowed head and open heart.

For this birthplace of aloha that welcomes nearly ten visitors for every resident each year—I will live aloha, tread lightly amongst this beauty and make it cleaner than I found it.

For a Hawaiian people whose ancestors sailed here using only the stars to guide them in search of islands to sustain them—I will learn from your legacy and support your ongoing voyage toward sustainability.