



For Immediate Release: March 25, 2020

HTA Release (20-06)

Hawai'i Passenger Arrivals By Air

HONOLULU – The number of people – both residents and visitors – arriving in Hawai'i daily by air has significantly dropped over the past week. Last week Tuesday, March 17th, Governor David Ige strongly encouraged our visitors to postpone their vacations for at least the next 30 days to help with the State's efforts to mitigate the spread of COVID-19. Governor Ige followed up with an order for a 14-day mandatory quarantine for all incoming passengers to Hawai'i and a stay at home order. The Department of Business, Economic Development & Tourism publishes a daily passenger count during the weekdays: <http://dbedt.hawaii.gov/visitor/daily-passenger-counts/>

Below you will find the amount of people – both residents and visitors – who arrived by air, broken down by island. This includes passengers from the U.S. mainland and international locations, but not interisland travel. *We have included the drop in percentage compared to the same time a year ago.

Total Statewide Daily Passengers

- 03/16/20 – 20,485 -32.8%
- 03/17/20 – 19,233 -34.5%
- 03/18/20 – 14,100 -54.1%
- 03/19/20 – 10,600 -68.7%
- 03/20/20 – 8,402 -76.5%
- 03/21/20 – 6,899 -82.1%
- 03/22/20 – 5,642 -84.3%
- 03/23/20 – 4,280 -87.5%
- 03/24/20 – 4,131 -87.2%

Total Statewide Domestic Daily Passengers

- 03/16/20 – 18,144 -23.7%
- 03/17/20 – 15,644 -29.1%
- 03/18/20 – 11,398 -51.9%
- 03/19/20 – 8,762 -66.2%
- 03/20/20 – 6,695 -75.8%
- 03/21/20 – 5,109 -82.8%
- 03/22/20 – 3,966 -85.7%
- 03/23/20 – 3,393 -87.1%
- 03/24/20 – 3,227 -86.9%

Total Statewide International Daily Passengers

- 03/16/20 – 2,341 -65.1%
- 03/17/20 – 3,589 -50.7%
- 03/18/20 – 2,702 -61.5%
- 03/19/20 – 1,838 -76.8%
- 03/20/20 – 1,707 -78.9%
- 03/21/20 – 1,790 -79.7%
- 03/22/20 – 1,676 -79.4%
- 03/23/20 – 887 -88.9%
- 03/24/20 – 904 -88.2%

O'ahu

- 03/16/20 – 12,417 -35.9%
- 03/17/20 – 12,536 -36.5%
- 03/18/20 – 9,727 -50.6%
- 03/19/20 – 7,353 -65.4%
- 03/20/20 – 5,960 -73.6%
- 03/21/20 – 5,343 -76.7%
- 03/22/20 – 4,554 -79.9%
- 03/23/20 – 3,026 -85.9%
- 03/24/20 – 3,334 -84.2%

Maui

- 03/16/20 – 4,513 -20.1%
- 03/17/20 – 3,592 -28.7%
- 03/18/20 – 2,212 -63.4%
- 03/19/20 – 1,565 -77.6%
- 03/20/20 – 1,365 -80.9%
- 03/21/20 – 847 -89.5%
- 03/22/20 – 582 -92.1%
- 03/23/20 – 742 -88.8%
- 03/24/20 – 399 -93.1%

Kaua'i

- 03/16/20 1,236 -46.1%
- 03/17/20 919 -55.8%
- 03/18/20 757 -59.7%
- 03/19/20 754 -67.0%
- 03/20/20 443 -79.2%
- 03/21/20 238 -92.8%
- 03/22/20 155 -94.0%
- 03/23/20 97 -96.5%
- 03/24/20 38 -98.5%

Hawai'i Island (U.S. Mainland flights only)

- 03/16/20 – 2,319 -26.4%
- 03/17/20 – 2,186 -13.0%
- 03/18/20 – 1,404 -54.6%
- 03/19/20 – 928 -72.1%
- 03/20/20 – 634 -83.8%
- 03/21/20 – 471 -89.0%
- 03/22/20 – 351 -89.6%
- 03/23/20 – 414 -88.0%
- 03/24/20 – 360 -87.6%

Note: The daily average amount of residents arriving during March 2019 was 4,268

Note: The passenger count does not include flights from Canada

###

About the Hawai'i Tourism Authority

The [Hawai'i Tourism Authority](#) is the State of Hawai'i agency responsible for strategically managing its support of the tourism industry. Established in 1998 to support Hawai'i's leading industry and largest employer, HTA continually strives to help ensure tourism's sustainability and the benefits it brings to residents and communities statewide.

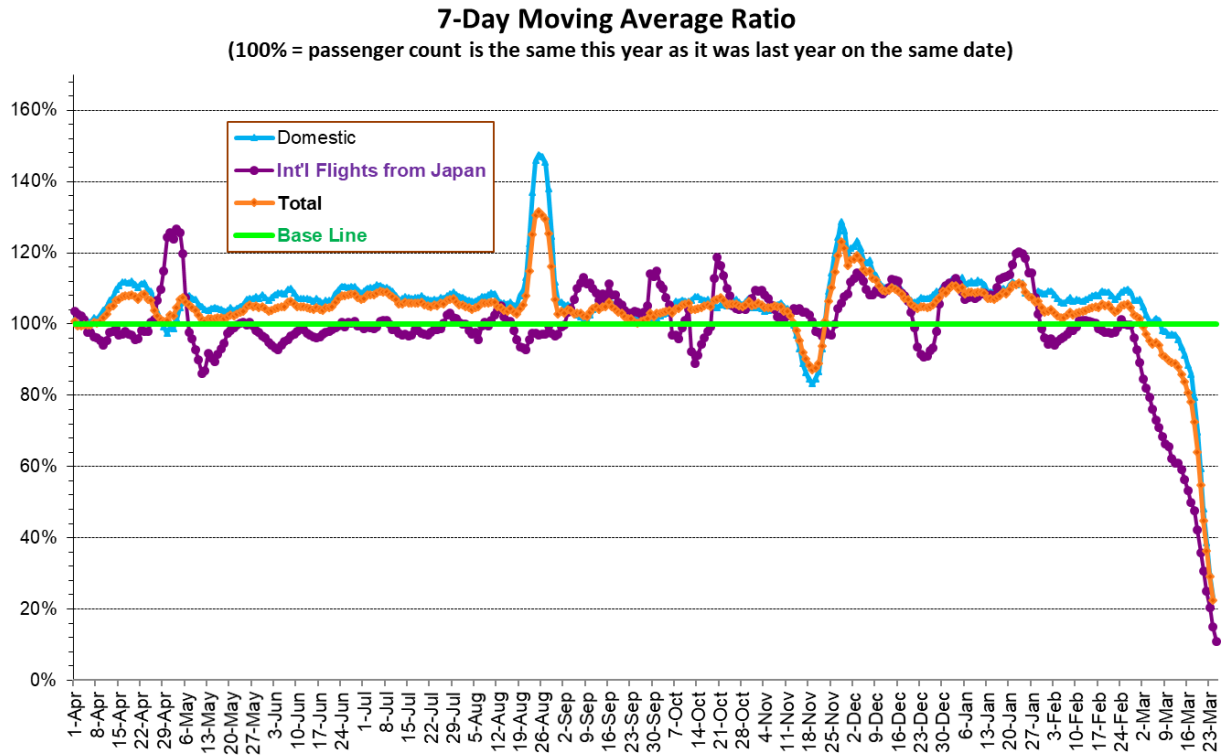
For more information about HTA, please visit www.hawaii tourism authority.org. Follow updates about HTA on [Facebook](#), [Instagram](#), [Twitter](#) (@HawaiiHTA) and its [YouTube Channel](#).

For more information, contact:

Marisa Yamane
Director of Communications &
Public Relations
Hawai'i Tourism Authority
Marisa.Yamane@gohta.net

Jennifer Chun
Director of Tourism Research
Hawai'i Tourism Authority
Jennifer@gohta.net

Figure 1 Statewide Daily Passenger Arrivals – 7-Day Moving Average Ratio



Note: Total includes all domestic and international flights excluding inter-island flights and flights from Canada.

Source: Department of Business, Economic Development & Tourism