

HTA COVID-19 UPDATE

(Issued: 3/27/20 @ 4:30pm)

Impact on Wholesale Partners

OCEANIA: The Australian Prime Minister announced a travel ban. Following New Zealand. Australia is now on a lockdown with only essential services operating and all businesses required to work from home where possible.

SINGAPORE: The island nation banned social gathering of more than 10 people outside of work and school. The government also implemented closures of all bars, cinemas, and other entertainment venues from this Friday through April.

THAILAND: Starting 3/26 through April, Thailand will be under a "state of emergency" to curb the spread of the virus within the country. This will give the government more power to implement curfews, censor the media, stop public gatherings and deploy the military for enforcement. The government also allocated 10 billion baht (\$305 million) to assist small and medium enterprises especially tourism related businesses.

TAIWAN: Most confirmed new cases in Taiwan are imported from people who came back from traveling in a foreign country.

KOREA: Hana tour will launch a high-tech travel booking platform "Hana Hub" to capture the travel demands, and a local OTA "My Real Trip" will now focus on domestic travel while in past the bulk of their business was out bound products from South Korea. Nation's premium hotels and resorts are rolling out wellness packages and untack services (no direct contact) for consumers to overcome the travel slump and corona-blues from social isolation.

CHINA: 81,960 confirmed cases (67 more compare to yesterday). Starbucks reopened 5 stores in Wuhan on 3/24.

UK: 12,000 cases of COVID-19 with 500 deaths.

Department of Health Update

COVID-19 Positive* Cases Cumulative totals as of 12:00pm on March 27, 2020

County	120 (14)
Hawaii	7 (2)
Honolulu	87 (10)
Kauai	5 (0)
Maui	16 (2)
Pending	3 (0)
HI Residents Diagnosed Outside of HI	2 (0)
Total Required Hospitalization	8 (0)
Total Deaths	0 (0)

* includes presumptive and confirmed cases, and Hawaii and non-Hawaii residents; data are preliminary and subject to change; note that CDC provides case counts according to states of residence.

Impact on Airlines

Flight suspension information from Japan are found on the following web sites by airlines:

ANA <https://www.ana.co.jp/ia/jp/international/>

JAL <https://www.jal.co.jp/jp/jainfo/2020/inter/200313/index.html>

DELTA <https://news.delta.com/delta-reduces-japan-flight-schedule-due-covid-19-jp>

HAWAIIAN <https://www.hawaiianairlines.co.jp/alerts/covid-19-travel-advisories>

UNITED <https://hub.united.com/united-covid19-japanflights-2645445173.html>

KOREAN will suspend KE001/002

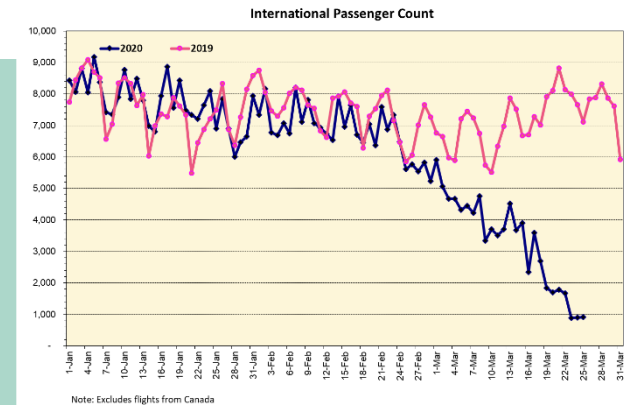
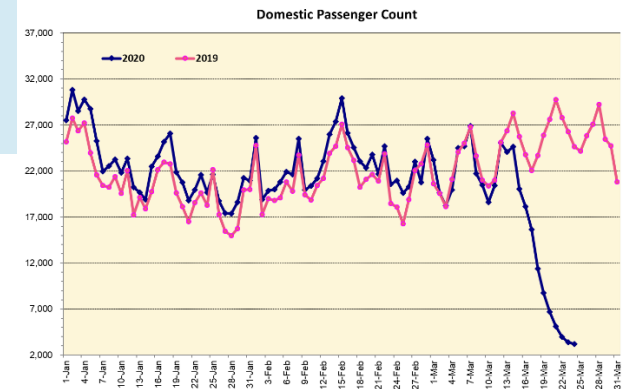
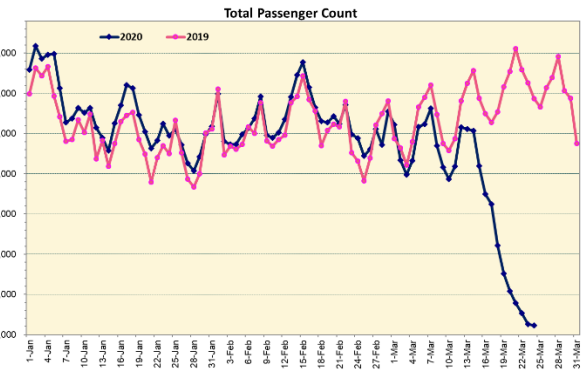
(Narita-Honolulu) 3/26-4/30

ASIAJ will suspend D7 1/2

(Kansai-Honolulu) 3/26-4/30

Impact on Hotels

Hotel closure are up to 98 now and continues to increase. All closures of Hotels, activities, parks, restaurants etc. are listed on the GOHAWAII.COM web site.

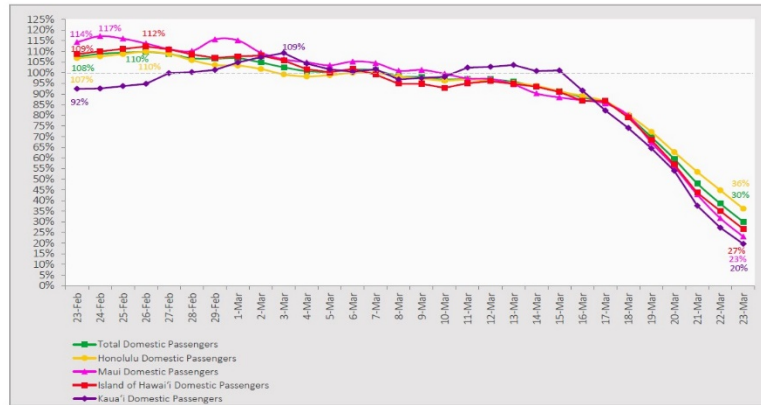


Daily Passenger Count Table

3/24/2020	Domestic	International	Total
Oahu	2,430	904	3,334
Maui	399		399
Island of Hawaii	360		360
Kauai	38		38
State	3,227	904	4,131

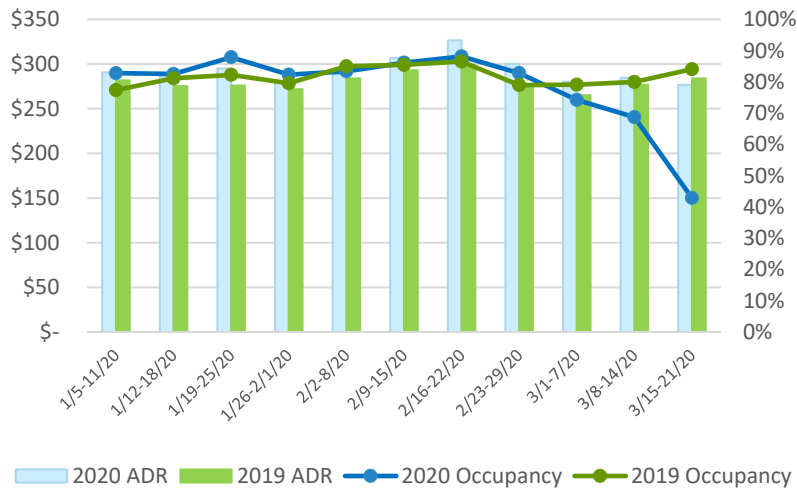
7-Day Domestic by Island Moving Average Daily Passenger Volume

2020 Volume as Percentage of 2019 Volume
Through March 23, 2020



Source: HVCB analysis based on data from DBEDT
Note: Passenger volume figures include both visitors and residents.

State of Hawai'i Hotel Performance by Week - 2020 vs 2019



Source: STR, Inc. © Copyright 2020 Hawai'i Tourism Authority

Hawaii Hotel Performance Info:

For the week of March 15-21, 2020

	Occupancy	ADR	RevPAR
State of Hawaii	42.9%	\$ 276.75	\$ 118.64
Oahu	40.4%	\$ 212.36	\$ 85.83
Maui County	45.3%	\$ 415.31	\$ 187.94
Kauai County	44.8%	\$ 283.51	\$ 221.73
Island of Hawaii	48.6%	\$ 275.72	\$ 134.13
Kohala Coast	45.5%	\$ 424.47	\$ 193.10

Helpful Resources

Department of Health
<https://hawaiicovid19.com/>

Department of Health
<https://health.hawaii.gov/docd/advisories/novel-coronavirus-2019>

Domestic by Island Month-to-Date and Year-to-Date Daily Passenger Volume

2020 Volume versus 2019 Volume
Through March 23, 2020

March 2020 (Month-to-Date through March 23)

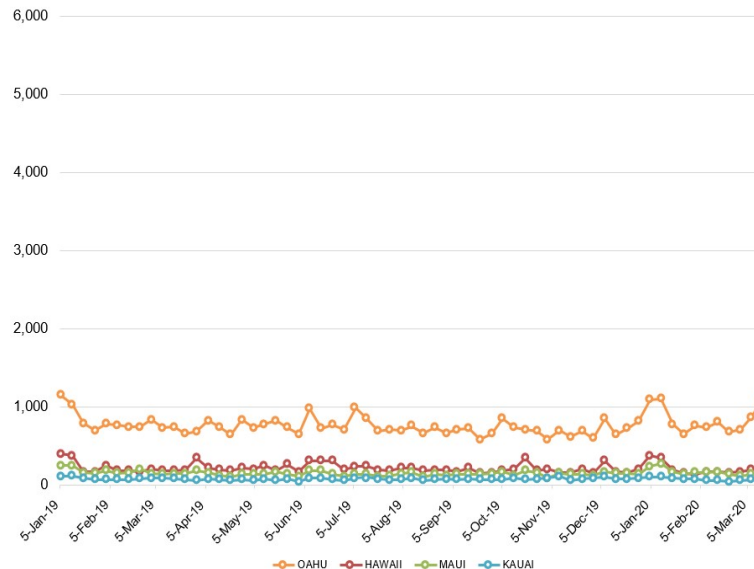
	2020	2019	Volume Change	Percent Change
Honolulu	221,547	290,987	-69,440	-23.9%
Maui County	98,885	137,656	-38,771	-28.2%
Island of Hawai'i	49,749	69,833	-20,084	-28.8%
Kauai	35,186	48,855	-13,669	-28.0%
Total	405,367	547,331	-141,964	-25.9%

2020 (Year-to-Date through March 23)

	2020	2019	Volume Change	Percent Change
Honolulu	958,541	961,538	-2,997	-0.3%
Maui County	440,050	434,277	+5,773	+1.3%
Island of Hawai'i	215,280	222,430	-7,150	-3.2%
Kauai	148,394	156,742	-8,348	-5.3%
Total	1,762,265	1,774,987	-12,722	-0.7%

Source: HVCB analysis based on data from DBEDT
Note: Passenger volume figures include both visitors and residents. Total includes other international passengers. 2020 includes one additional day due to Leap Year (February 29th, 2020).

2020 Initial Weekly Unemployment Claims by Island



Weekly Unemployment Initial Claims: March 21, 2020

State of Hawaii	8,821
C&C of Oahu	4,837
Maui County	2,213
Hawaii County	1,019
Kauai County	698
Agent (fled in Hawaii against another state)	54

News Highlights

March 27, 2020

Hawaii News Now: [A noticeably empty airport marks day 1 of Hawaii's travel quarantine rules](#)

Honolulu Star-Advertiser: [Arriving passengers face 14 days of mandatory self-isolation, based on the honor system](#)

KHON2: [State: random calls can be made to make sure visitors who just arrived are quarantined in hotel rooms](#)

Big Island Now: [As Quarantine Kicks In, Hawaii Arrivals Plummet](#)

Hawaii Tribune-Herald: [Young Brothers to stop accepting 'nonessential' cargo](#)

The Garden Island: [Airlines still marketing flights to Hawaii, Kauai](#)

West Hawaii Today: [Tourism-dependent Hawaii hit by unemployment during pandemic](#)

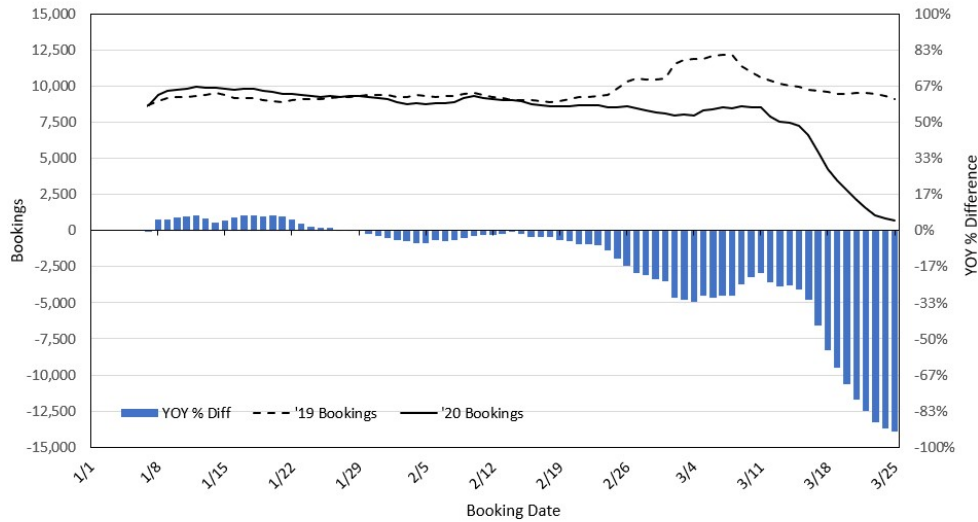
West Hawaii Today: [Getting a better understanding: Second drive-through COVID-19 testing slated for Kona](#)

Honolulu Civil Beat: [Hawaii Travelers Quarantine: 'I Think I Might Go Insane'](#)

KCRA3: [Travel to Hawaii drops by 87% after new coronavirus restrictions](#)

Department of Transportation
<https://hidot.hawaii.gov/coronavirus/>

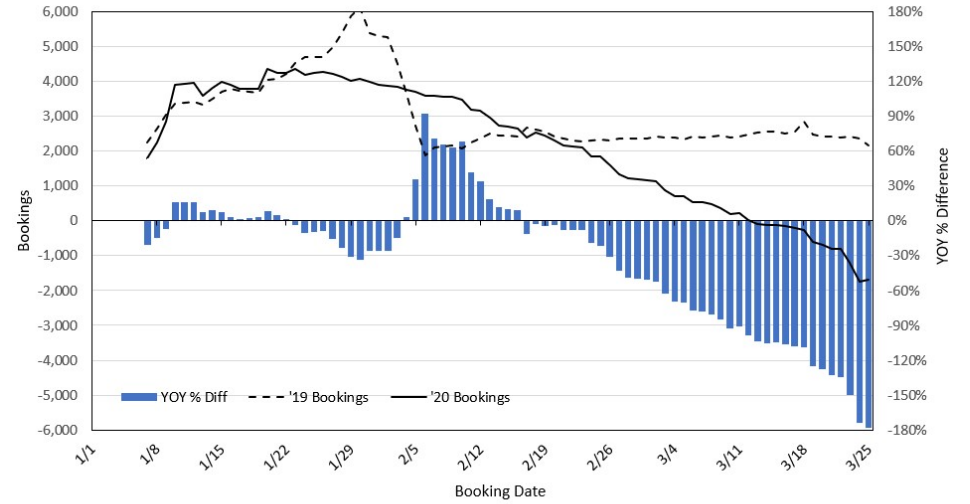
Travel Agency Bookings to Hawaii for Future Arrivals* Based on a 7-day Moving Average, 2020 vs 2019 U.S.



*Future Arrivals refers to all arrivals that are 'future' relative to the referenced booking date.
Source: Global Agency Pro

Update: Mar 25, 2020

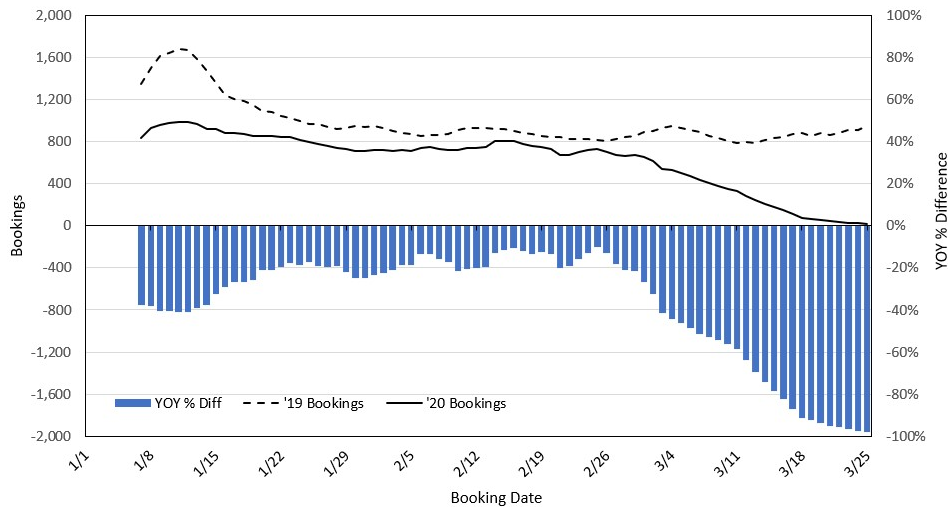
Travel Agency Bookings to Hawaii for Future Arrivals* Based on a 7-day Moving Average, 2020 vs 2019 Japan



*Future Arrivals refers to all arrivals that are 'future' relative to the referenced booking date.
Source: Global Agency Pro

Update: Mar 25, 2020

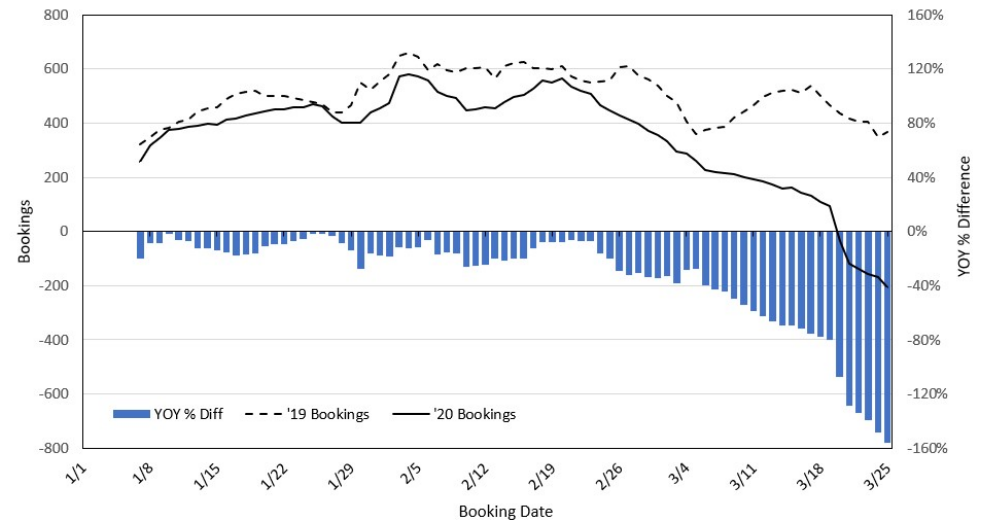
Travel Agency Bookings to Hawaii for Future Arrivals* Based on a 7-day Moving Average, 2020 vs 2019 Canada



*Future Arrivals refers to all arrivals that are 'future' relative to the referenced booking date.
Source: Global Agency Pro

Update: Mar 25, 2020

Travel Agency Bookings to Hawaii for Future Arrivals* Based on a 7-day Moving Average, 2020 vs 2019 Australia



*Future Arrivals refers to all arrivals that are 'future' relative to the referenced booking date.
Source: Global Agency Pro

Update: Mar 25, 2020