

HTA COVID-19 UPDATE

(Issued: 4/1/20 @ 4:00pm)

Impact on Wholesale Partners

KOREA: South Korea confirmed 101 new cases of COVID-19, bringing the country's total cases to 9,887 and marked the 20th consecutive day that new infections have hovered around 100 or fewer. The government will implement a "zero-tolerance" policy to all entrants who violate the 2-week mandatory self-quarantine rule regardless of nationality or stay period, and they may face legal punishment or deportation.

CHINA: Now has 82,631 confirmed cases, 49 new cases compared to yesterday. 1 case is local and 48 are imported.

US: Johns Hopkins reports the first case of COVID-19 in US was reported 76 days ago on 1/22/2020. Since then, the country has reported 161,807 cases, and 2,978 deaths as of 3/31. The impact of the Coronavirus pandemic on US travel continues to deepen. According to a Longwoods INTL tracking study of American travelers and the COVID-19 pandemic, 84% of them are changing their travel plans for the next 6 months, up from 58% 2 weeks ago and 75% last week.

CANADA: It was announced that Ontario will remain under a state of emergency until at least 4/14. This will be reviewed on a 2-week basis. Leder's latest survey about COVID-19 (taken 3/27-3/29) revealed that among 1,590 Canadians: 45% have experienced a decrease in income and 22% will find it difficult to pay their mortgage or rent. Red Label Vacations (RLV), the parent company of Travel Brands, redtag.ca, itravel2000 and The Travel Experts, has announced a round of company-wide temporary layoffs, effective immediately. Ensemble Travel Group says it's reducing its workforce by roughly 50% in Canada and US temporarily.

TAIWAN: Taiwan's National Health command Center (NHCC) advises to keep a social distance of 1.5 meters indoors and 1 meter outdoors. At the same time, NHCC also advises that everyone should wear a mask in confined spaces like the metro system and trains. Taiwan remains to be one of the few countries that has resumed school and most businesses.

UK: Wimbledon has been cancelled, which had been due to take place 6/29-7/13/2020.

Department of Health Update

COVID-19 Positive* Cases Cumulative totals as of 12:00pm on April 1, 2020

County	258 (34)
Hawaii	17 (2)
Honolulu	170 (18)
Kauai	12 (0)
Maui	26 (1)
Pending	31 (13)
HI Residents Diagnosed Outside of HI	2 (0)
Total Required Hospitalization	15 (2)
Total Deaths	1 (0)
* includes presumptive and confirmed cases, and Hawaii and non-Hawaii residents; data are preliminary and subject to change; note that CDC provides case counts according to states of residence.	

Impact on Airlines

CRUISE LINES: The big news today is about the ships still stuck at sea. Holland America's president is appealing to countries to accept the Zaandam and Rotterdam on Humanitarian grounds. Fort Lauderdale still has not accepted them.

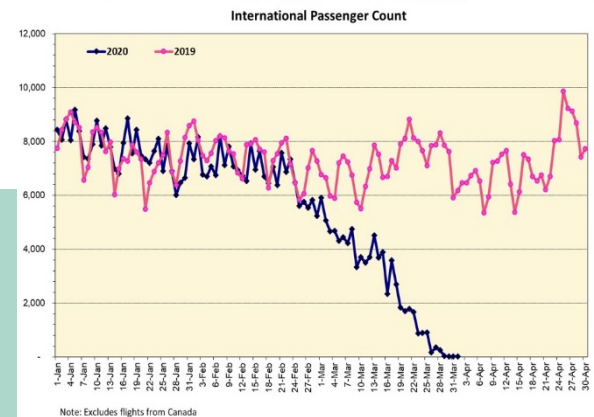
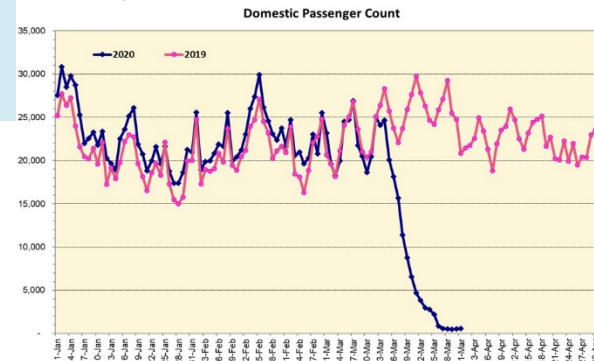
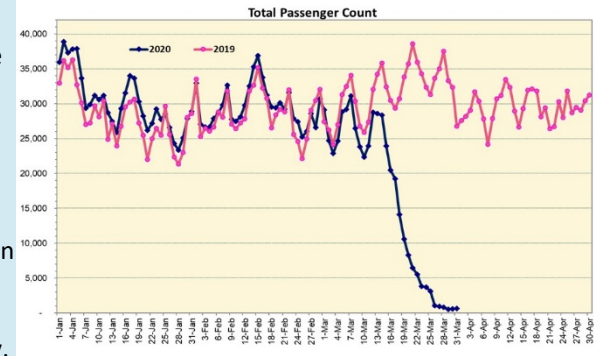
KOREAN AIRLINES: Is still flying into Hawaii 3 times a week, however effective 4/4 through 4/30 they will suspend all flights. 387 non-Korean pilots will be on a mandatory 3 months unpaid leave effective 4/1.

ASIANA AIR: Will suspend all flights effect today.

AIR CANADA: Announced the layoff of 16,500 employees.

Impact on Hotels

As of now, we have 118 hotels closures across the Hawaiian Islands. This number is fluid with frequent changes.

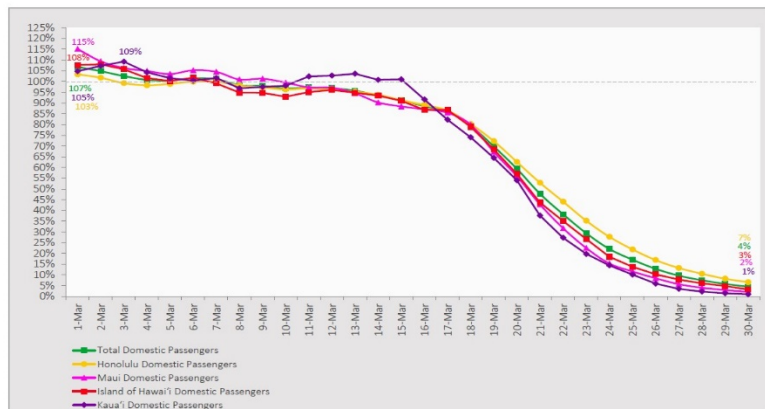


Daily Passenger Count Table

3/31/2020	Domestic	International	Total
Oahu	442	17	459
Maui	73		73
Island of Hawaii	72		72
Kauai	8		8
State	595	17	612

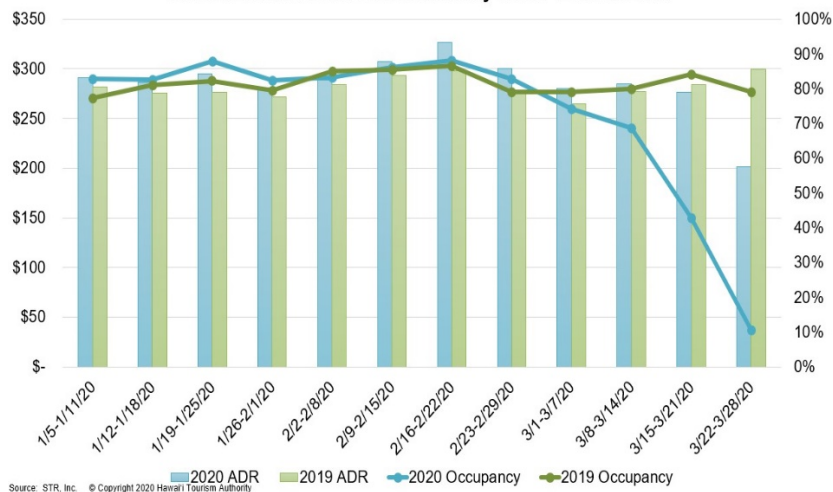
7-Day Domestic by Island Moving Average Daily Passenger Volume

2020 Volume as Percentage of 2019 Volume
Through March 30, 2020



Source: HVCB analysis based on data from DBEDT
Note: Passenger volume figures include both visitors and residents.

State of Hawai'i Hotel Performance by Week - 2020 vs 2019



Hawaii Hotel Performance Info:

For the week of March 22-28, 2020

	Occupancy	ADR	RevPAR
State of Hawaii	10.5%	\$ 201.36	\$ 21.20
Oahu	10.5%	\$ 175.77	\$ 18.45
Maui County	10.2%	\$ 251.75	\$ 25.59
Kauai County	9.4%	\$ 220.67	\$ 20.67
Island of Hawaii	12.2%	\$ 214.80	\$ 26.11

Domestic by Island Month-to-Date and Year-to-Date Daily Passenger Volume

2020 Volume versus 2019 Volume
Through March 30, 2020

March 2020 (Month-to-Date through March 30)

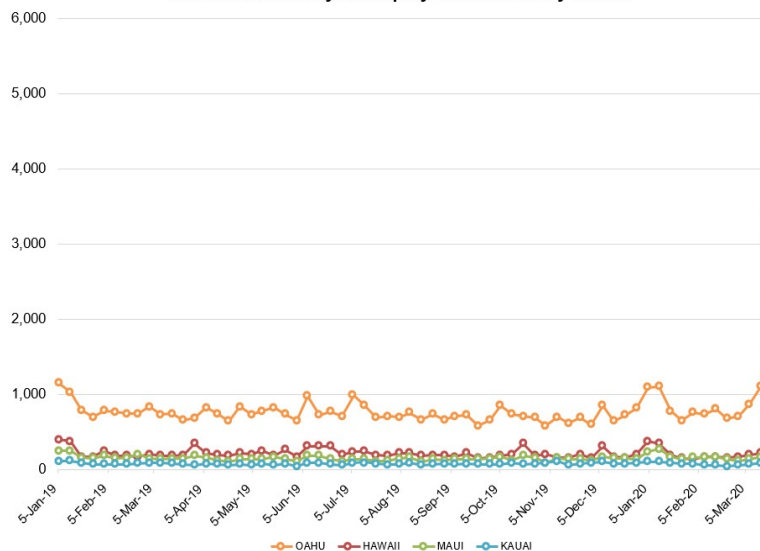
	2020	2019	Volume Change	Percent Change
Honolulu	226,897	386,777	-159,880	-41.3%
Maui County	99,560	185,059	-85,499	-46.2%
Island of Hawai'i	50,505	93,577	-43,072	-46.0%
Kaua'i	35,373	67,044	-31,671	-47.2%
Total	412,335	732,457	-320,122	-43.7%

2020 (Year-to-Date through March 30)

	2020	2019	Volume Change	Percent Change
Honolulu	963,891	1,057,328	-93,437	-8.8%
Maui County	440,725	481,680	-40,955	-8.5%
Island of Hawai'i	216,036	246,174	-30,138	-12.2%
Kaua'i	148,581	174,931	-26,350	-15.1%
Total	1,769,233	1,960,113	-190,880	-9.7%

Source: HVCB analysis based on data from DBEDT
Note: Passenger volume figures include both visitors and residents. Total includes other international passengers. 2020 includes one additional day due to Leap Year (February 29th, 2020).

2020 Initial Weekly Unemployment Claims by Island



Weekly Unemployment Initial Claims: March 21, 2020

State of Hawaii	8,821
C&C of Oahu	4,837
Maui County	2,213
Hawaii County	1,019
Kauai County	698
Agent (fled in Hawaii against another state)	54

News Highlights

April 1, 2020

Honolulu Star-Advertiser: [Hawaii tourism won't improve until coronavirus curve flattens](#)

Hawaii News Now: [State's expanded, mandatory quarantine for inter-island travelers goes into effect](#)

Hawaii News Now: [Battleship Missouri offers Hawaii students free virtual tour](#)

Hawaii News Now: [Maui's mayor: Surfing or paddling is fine. Lounging on the beach is not](#)

The New York Times: [Coronavirus in Hawaii: Map and Case Count](#)

CNN: [Hawaii will fine self-quarantine violators \\$5,000 or send them to prison](#)

CNN: [Airlines will offer fewer choices and higher fares after the coronavirus crisis](#)

Helpful Resources

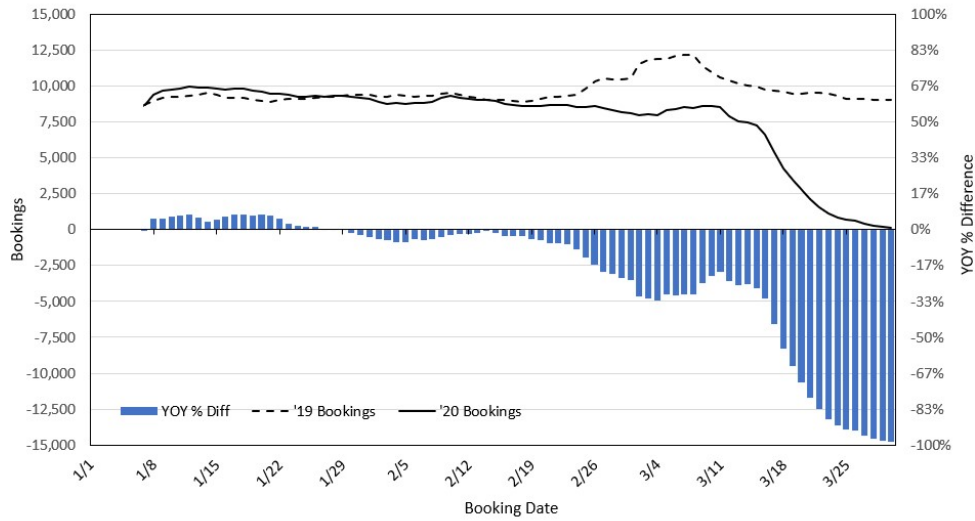
Department of Health
<https://hawaiicovid19.com/>

Department of Health
<https://health.hawaii.gov/docd/advisories/novel-coronavirus-2019>

Dept. of Business, Economic Development & Tourism
<https://dbedt.hawaii.gov/economic/covid19/>

Department of Transportation
<https://hidot.hawaii.gov/coronavirus/>

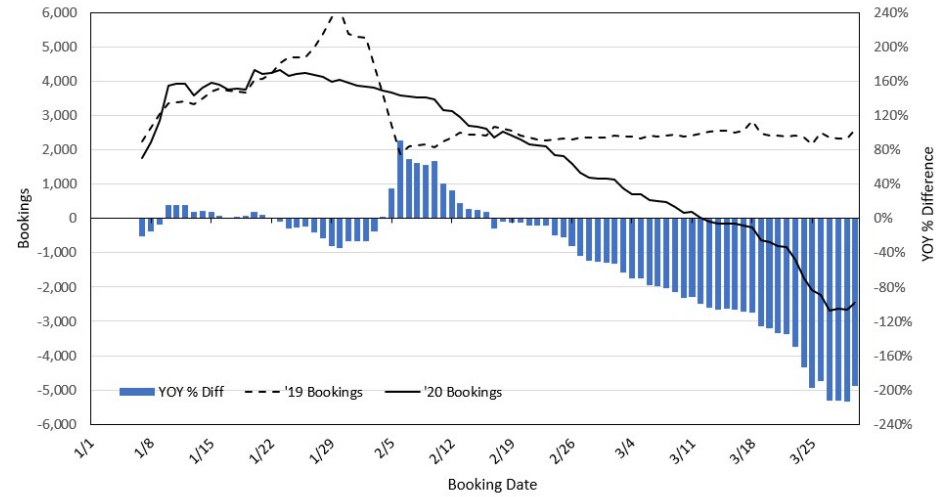
Travel Agency Bookings to Hawaii for Future Arrivals* Based on a 7-day Moving Average, 2020 vs 2019 U.S.



*Future Arrivals refers to all arrivals that are 'future' relative to the referenced booking date.
Source: Global Agency Pro

Update: Mar 30, 2020

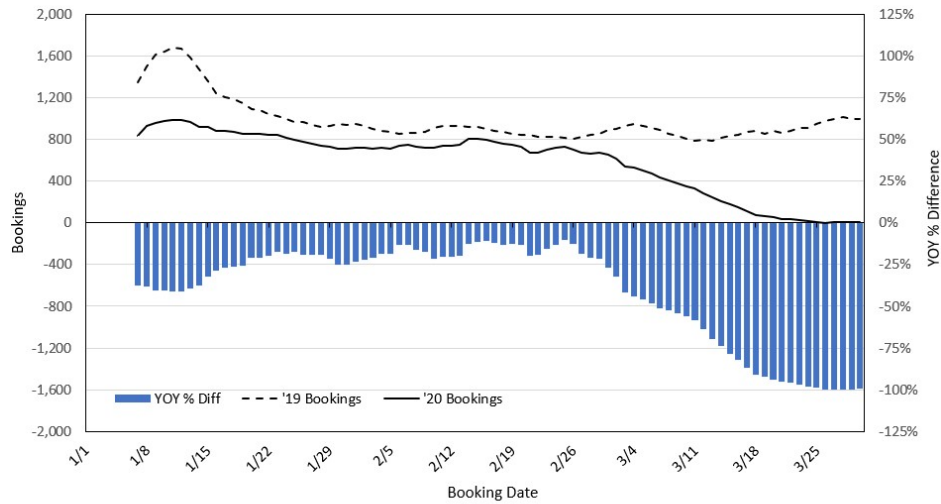
Travel Agency Bookings to Hawaii for Future Arrivals* Based on a 7-day Moving Average, 2020 vs 2019 Japan



*Future Arrivals refers to all arrivals that are 'future' relative to the referenced booking date.
Source: Global Agency Pro

Update: Mar 30, 2020

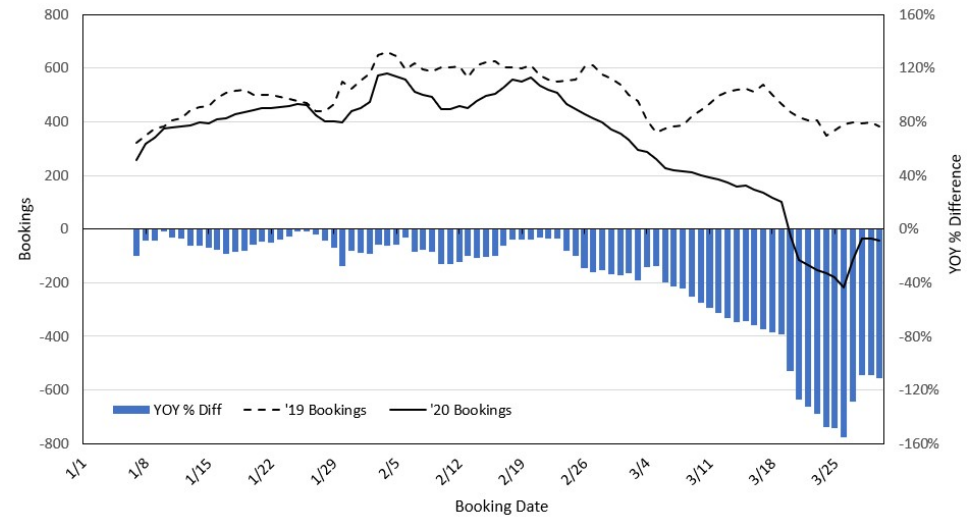
Travel Agency Bookings to Hawaii for Future Arrivals* Based on a 7-day Moving Average, 2020 vs 2019 Canada



*Future Arrivals refers to all arrivals that are 'future' relative to the referenced booking date.
Source: Global Agency Pro

Update: Mar 30, 2020

Travel Agency Bookings to Hawaii for Future Arrivals* Based on a 7-day Moving Average, 2020 vs 2019 Australia



*Future Arrivals refers to all arrivals that are 'future' relative to the referenced booking date.
Source: Global Agency Pro

Update: Mar 30, 2020