

HTA COVID-19 UPDATE

(Issued: 4/3/20 @ 6:30pm)

Impact on Wholesale Partners

US: Johns Hopkins reports 245,213 (+28,698) confirmed cases, 6,088 deaths (+973 today) and 10,043 recovered. Initial claims for U.S. unemployment Insurance soared by 3,341,000 for the week ending 3/28. National weekly travel spending dropped to just \$3.8 billion last week, down from \$19.8 billion during the first week of March. Through 3/28, travel spending losses for the month totaled \$42 billion.

UK & IRELAND: As of 4/3 at 9am, a total of 173,784 people has been tested of which 38,168 had positive results for COVID-19. As of 4/2 at 5pm, of those hospitalized in the UK who tested positive, 3,605 have sadly died.

GERMANY: Currently Germany has 83,504 infected people with 1,101 deaths. Germany is taking patients (in critical condition) from Italy and France. These 2 countries do not have enough capacity in their hospitals, patients are either flown in by the German army or by special trains.

THAILAND: The Thai Prime Minister announced a nationwide 10pm-4am curfew to combat the spread of COVID-19.

CHINA: Total confirmed cases are 82,786 (61 new cases compared to yesterday)

Impact on Airlines & Cruise lines

CRUISE LINES: Tour operators received a confirmation of cancellation for the Seabourn Sojourn for her Hawaii sailing in May and Sun Princess for her sailing for June. BRITISH AIRWAYS: Furloughed 80% of their employees. AMERICAN AIRLINES: Announced today that they will suspend more than 60% of their total international capacity this summer compared to the same peak period in 2019, which includes capacity reductions of 80% in the Pacific, 65% in the Atlantic, and 48% in Latin America. These changes are due to significantly decreased customer demand as well as government travel restrictions - both related to COVID-19.

SINGAPORE AIRLINES: Announced that it will resume its long-haul international flights but only to London, Frankfurt, Zurich, and Los Angeles. However, only citizens and permanent residents are allowed to enter or transit through Singapore due to the current ban of all short-term visitors.

JEJU AIR: Korea's largest low-cost carrier is expanding the frequency of its Seoul to Busan route to a total of 92 from 4/3 to 4/25 serving 17,400 seats to fulfill consumers demand. T'way Air launches 4 flights per week for Cheongju to Jeju to serve the leisure demand to Jeju Island starting from 4/25.

Impact on Hotels

No change in hotel status.

Department of Health Update

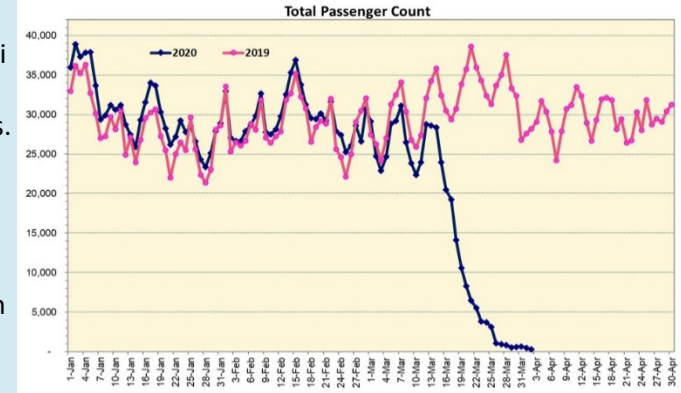
COVID-19 Positive* Cases Cumulative totals as of 12:00pm on April 3, 2020

County	319 (34)
Hawaii	20 (2)
Honolulu	237 (31)
Kauai	13 (1)
Maui	36 (9)
Pending	11 (-)
HI Residents Diagnosed Outside of HI	2 (0)
Total Required Hospitalization	18 (3)
Total Deaths	3 (1)

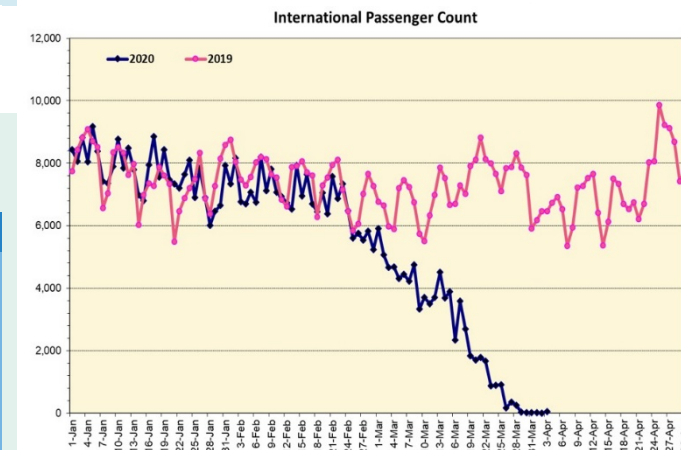
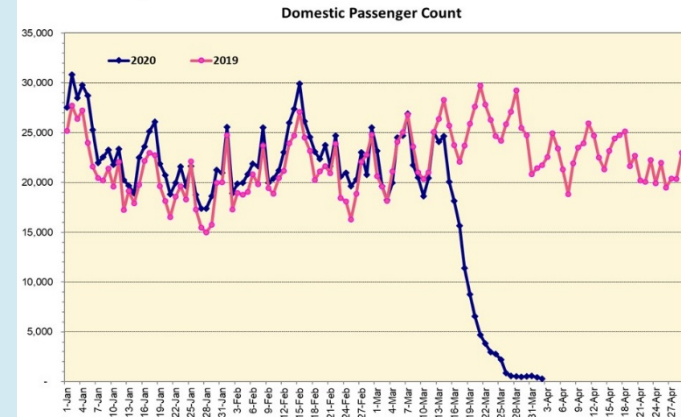
* includes presumptive and confirmed cases, and Hawaii and non-Hawaii residents; data are preliminary and subject to change; note that CDC provides case counts according to states of residence.

Daily Passenger Count Table

04/02/2020	Domestic	International	Total
Oahu	251	0	251
Maui	14		14
Island of Hawaii	31		31
Kauai	3		3
State	299	0	299



Note: Excludes flights from Canada

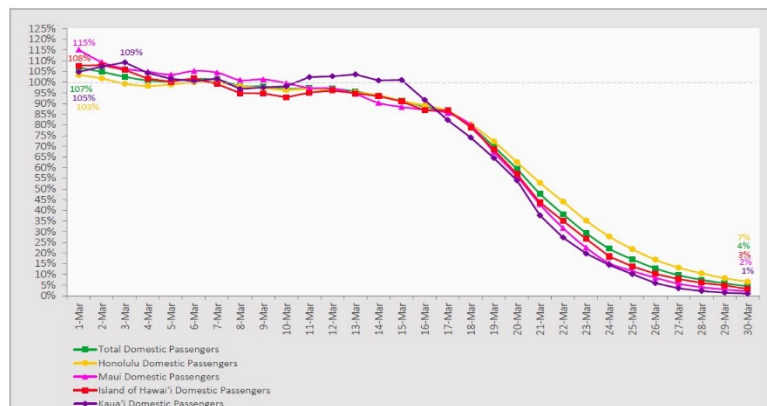


Note: Excludes flights from Canada

7-Day Domestic by Island Moving Average Daily Passenger Volume

2020 Volume as Percentage of 2019 Volume

Through March 30, 2020



Source: HVCB analysis based on data from DBEDT
Note: Passenger volume figures include both visitors and residents.

Domestic by Island Month-to-Date and Year-to-Date Daily Passenger Volume

2020 Volume versus 2019 Volume

Through March 30, 2020

March 2020 (Month-to-Date through March 30)

	2020	2019	Volume Change	Percent Change
Honolulu	226,897	386,777	-159,880	-41.3%
Maui County	99,560	185,059	-85,499	-46.2%
Island of Hawai'i	50,505	93,577	-43,072	-46.0%
Kauai	35,373	67,044	-31,671	-47.2%
Total	412,335	732,457	-320,122	-43.7%

2020 (Year-to-Date through March 30)

	2020	2019	Volume Change	Percent Change
Honolulu	963,891	1,057,328	-93,437	-8.8%
Maui County	440,725	481,680	-40,955	-8.5%
Island of Hawai'i	216,036	246,174	-30,138	-12.2%
Kauai	148,581	174,931	-26,350	-15.1%
Total	1,769,233	1,960,113	-190,880	-9.7%

Source: HVCB analysis based on data from DBEDT
Note: Passenger volume figures include both visitors and residents. Total includes other international passengers. 2020 includes one additional day due to Leap Year (February 29th, 2020).

News Highlights

April 3, 2020

Honolulu Star-Advertiser: [New duties keep Hawaii tourism employees working](#)

Hawaii News Now: [To prevent spread of virus, mayor asks all Oahu residents to wear a cloth mask in public](#)

KHON2: [Oahu hotels donate items large and small for COVID relief](#)

Hawaii Magazine: [Hawaii Hotels Light Up With Messages of Hope](#)

Hawaii Public Radio: [Hawaii Updates: Second Death, First Molokai Case; Cases At 285; Mayor: Wear Masks; Screenings Set](#)

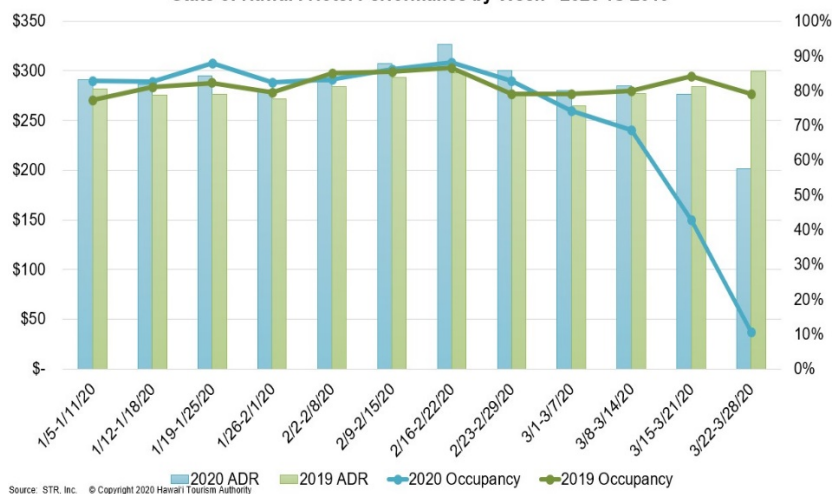
Hawaii Tribune Herald: [Jobless claims soar on Big Island, nationwide](#)

Honolulu Civil Beat: [Oahu Homeless Shelters Are Desperate For More Room As Virus Looms](#)

The Garden Island: [COVID-19 rules confuse homeowner](#)

CNN: [What you need to know about coronavirus on Friday, April 3](#)

State of Hawai'i Hotel Performance by Week - 2020 vs 2019

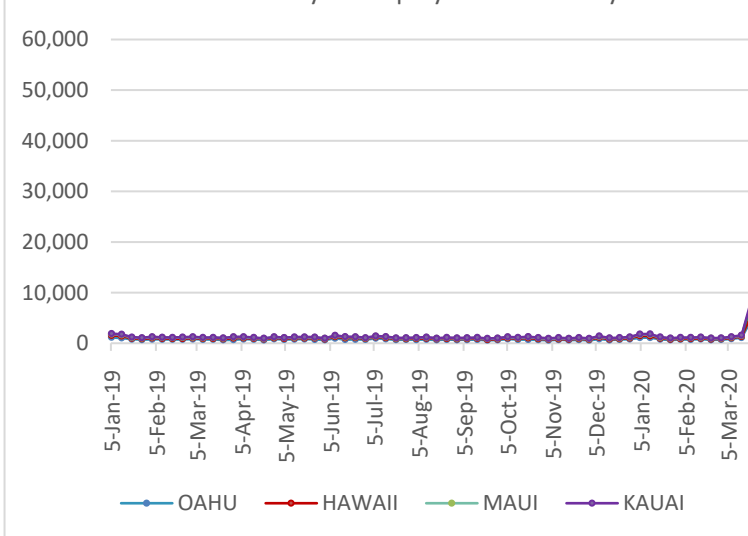


Hawaii Hotel Performance Info:

For the week of March 22-28, 2020

	Occupancy	ADR	RevPAR
State of Hawaii	10.5%	\$ 201.36	\$ 21.20
Oahu	10.5%	\$ 175.77	\$ 18.45
Maui County	10.2%	\$ 251.75	\$ 25.59
Kauai County	9.4%	\$ 220.67	\$ 20.67
Island of Hawaii	12.2%	\$ 214.80	\$ 26.11

2020 Initial Weekly Unemployment Claims by Island



Weekly Unemployment Initial Claims: March 28, 2020

State of Hawaii	48,639
C&C of Oahu	27,020
Maui County	10,933
Hawaii County	6,467
Kauai County	4,037
Agent (filed in Hawaii against another state)	182

Helpful Resources

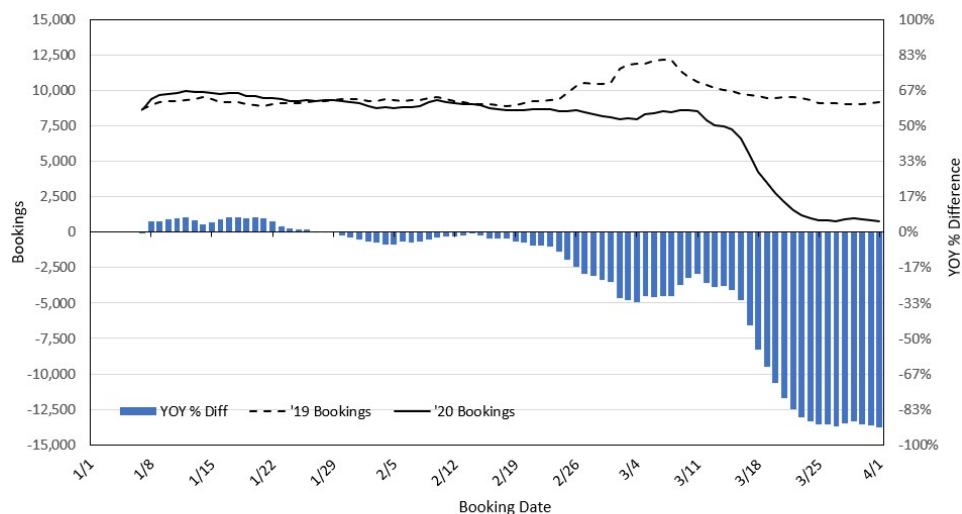
Department of Health
<https://hawaiicovid19.com/>

Department of Health
<https://health.hawaii.gov/docd/advisories/novel-coronavirus-2019>

Dept. of Business, Economic Development & Tourism
<https://dbedt.hawaii.gov/economic/covid19/>

Department of Transportation
<https://hidot.hawaii.gov/coronavirus/>

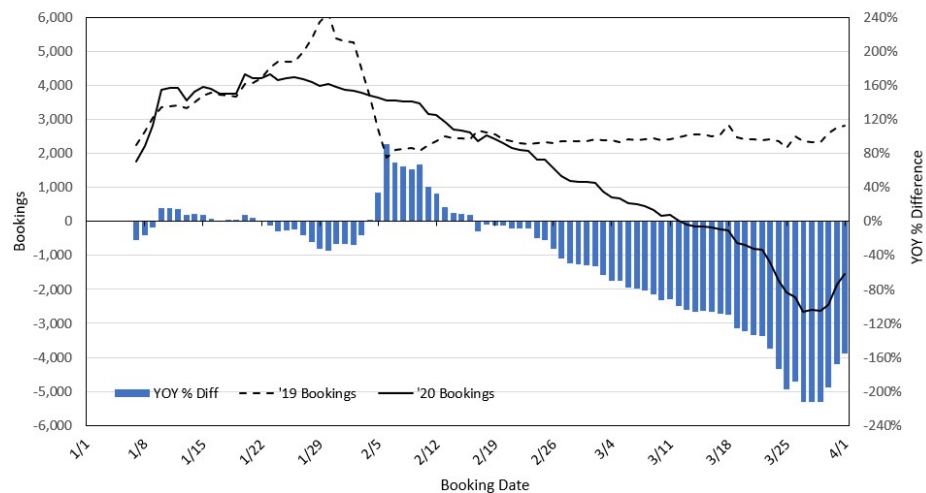
Travel Agency Bookings to Hawaii for Future Arrivals* Based on a 7-day Moving Average, 2020 vs 2019 U.S.



*Future Arrivals refers to all arrivals that are 'future' relative to the referenced booking date.
Source: Global Agency Pro

Update: Apr 1, 2020

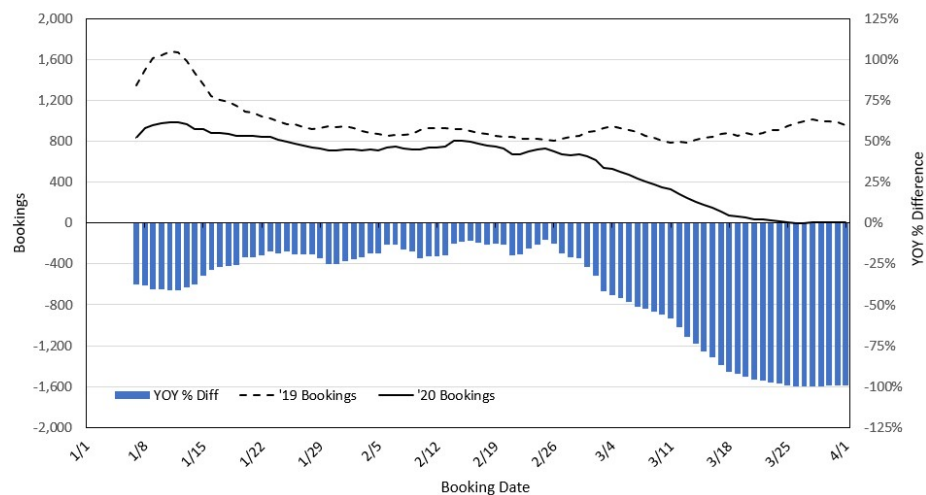
Travel Agency Bookings to Hawaii for Future Arrivals* Based on a 7-day Moving Average, 2020 vs 2019 Japan



*Future Arrivals refers to all arrivals that are 'future' relative to the referenced booking date.
Source: Global Agency Pro

Update: Apr 1, 2020

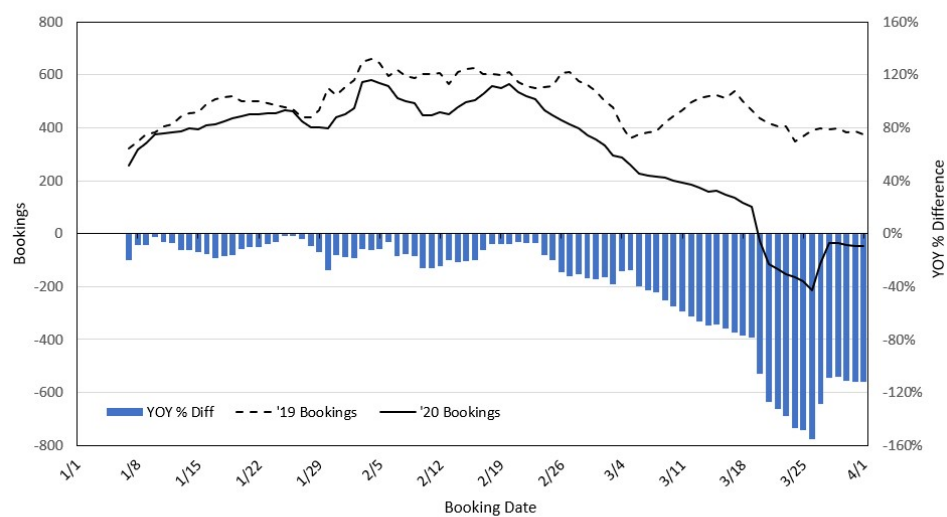
Travel Agency Bookings to Hawaii for Future Arrivals* Based on a 7-day Moving Average, 2020 vs 2019 Canada



*Future Arrivals refers to all arrivals that are 'future' relative to the referenced booking date.
Source: Global Agency Pro

Update: Apr 1, 2020

Travel Agency Bookings to Hawaii for Future Arrivals* Based on a 7-day Moving Average, 2020 vs 2019 Australia



*Future Arrivals refers to all arrivals that are 'future' relative to the referenced booking date.
Source: Global Agency Pro

Update: Apr 1, 2020