

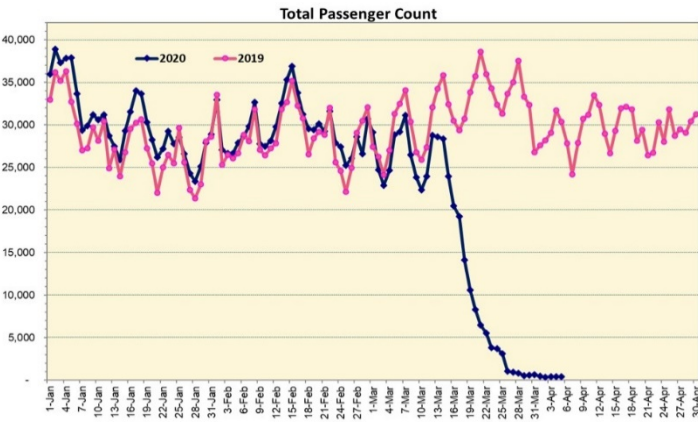
HTA COVID-19 UPDATE

(Issued: 4/6/20 @ 3:30pm)

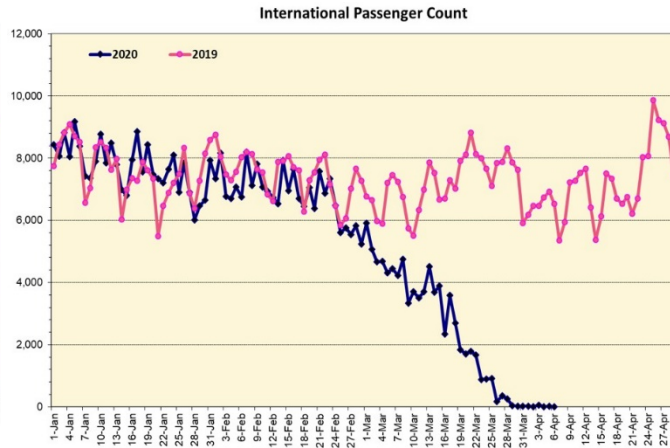
Novel Coronavirus in Hawaii

COVID-19 Positive* Cases

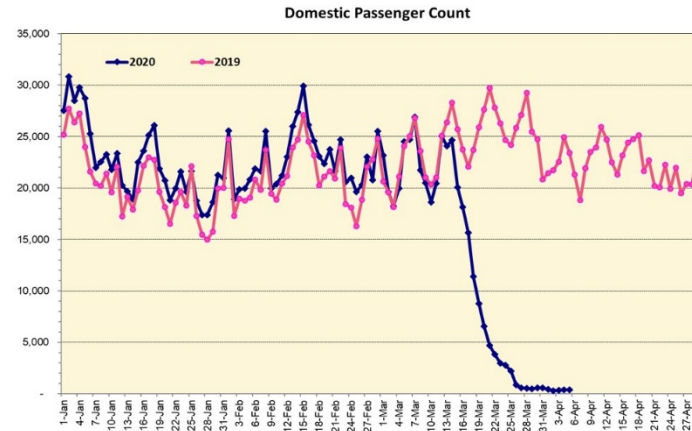
Cumulative totals as of 12:00 noon on April 6, 2020



Note: Excludes flights from Canada



Note: Excludes flights from Canada



Daily Passenger Count Table

04/05/2020	Domestic	International	Total
Oahu	240	24	264
Maui	47		47
Island of Hawaii	56		56
Kauai	28		28
State	371	24	395

4/6/20 Hawaii Passenger Arrivals by Air Update

Yesterday, 583 people arrived in Hawaii including 126 visitors and 233 residents. Mandatory 14-day, self-quarantine is required for all passengers arriving from out of state and also covers interisland travelers. This table shows the number of people who arrived by air from out of state yesterday and does not include interisland travel.

	Kona	Maui	Oahu	Lihue	Total
Crew	14	16	114	7	151
Intended New Resident	6		29		35
Resident	42	32	151	8	233
Transit			38		38
Visitor	10	15	84	17	126
Grand Total	72	63	416	32	583
Flights	3	4	14	2	23

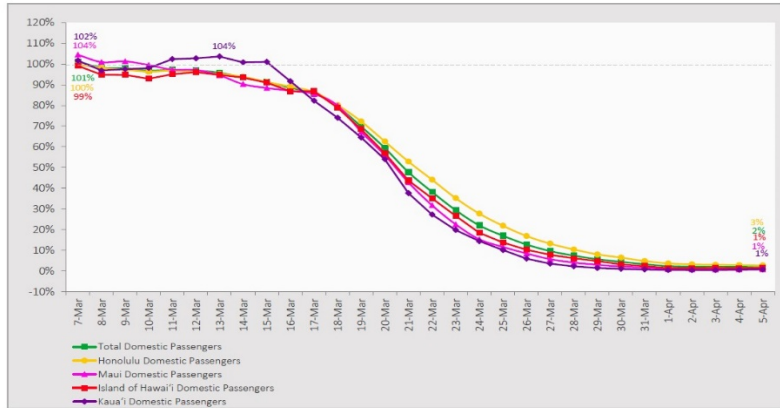
Statewide	Total
Total Cases	387 (16 new)
Released from Isolation†	89
Required Hospitalization	26
Deaths	5
BY COUNTY	Total
Hawaii County	
Total Cases	23
Released from Isolation†	9
Required Hospitalization	0
Deaths	0
Honolulu County	
Total Cases	292
Released from Isolation†	64
Required Hospitalization	21
Deaths	4
Kauai County	
Total Cases	17
Released from Isolation†	5
Required Hospitalization	1
Deaths	0
Maui County	
Total Cases	44
Released from Isolation†	11
Required Hospitalization	4
Deaths	1
HI Residents diagnosed outside of HI	2
County Pending	9

*includes presumptive and confirmed cases, data are preliminary and subject to change; note that CDC provides case counts according to states of residence.

†Isolation should be maintained until at least 3 days (72 hours) after resolution of fever and myalgia without the use of antipyretics OR at least 7 days have passed since symptom onset, whichever is longer.

7-Day Domestic by Island Moving Average Daily Passenger Volume

2020 Volume as Percentage of 2019 Volume
Through April 5, 2020



Domestic by Island Month-to-Date and Year-to-Date Daily Passenger Volume

2020 Volume versus 2019 Volume
Through April 5, 2020

April 2020 (Month-to-Date through April 5)

	2020	2019	Volume Change	Percent Change
Honolulu	1,426	59,443	-58,017	-97.6%
Maui County	188	29,551	-29,363	-99.4%
Island of Hawai'i	172	13,445	-13,273	-98.7%
Kaua'i	75	8,894	-8,819	-99.2%
Total	1,861	111,333	-109,472	-98.3%

2020 (Year-to-Date through April 5)

	2020	2019	Volume Change	Percent Change
Honolulu	965,641	1,130,466	-164,825	-14.6%
Maui County	441,030	517,175	-76,145	-14.7%
Island of Hawai'i	216,280	262,943	-46,663	-17.7%
Kaua'i	148,679	186,311	-37,632	-20.2%
Total	1,771,630	2,096,895	-325,265	-15.5%

Source: HVCB analysis based on data from DBEDT

Note: Passenger volume figures include both visitors and residents. Total includes other international passengers. 2020 includes one additional day due to Leap Year (February 29th, 2020).

News Highlights

April 6, 2020

Honolulu Star-Advertiser: [Visitor count rises over past 3 days, Hawaii Tourism Authority says](#)

Hawaii News Now: [Homeless who fly to Hawaii will be given an option: Turn around or get arrested](#)

Honolulu Star-Advertiser: [COVID-19 cases rise as visitor counts grow](#)

Hawaii Public Radio: [Hawaii Updates: Ige Rejects Caldwell Travel Ban; Activates National Guard](#)

Honolulu Star-Advertiser: [Hawaii mayors consider stricter safety measures as coronavirus cases grow](#)

The Garden Island: [‘Hotels for Heroes’ program kicks off today](#)

Travel Weekly: [Hawaii-based advisors stay nimble, prepare for reopening](#)

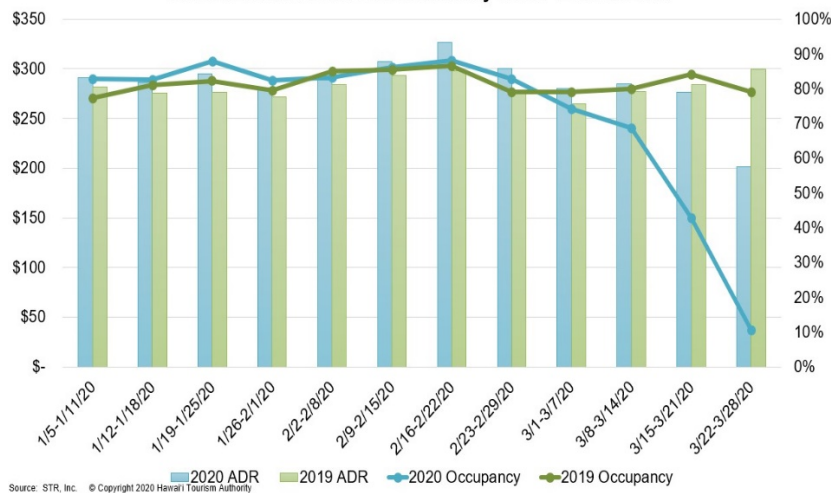
West Hawaii Today: [Back in business: Makalei Golf Club opens with COVID-19 restrictions in place](#)

Hawaii Magazine: [Visit Iolani Palace From Your Home](#)

The New York Times: [Adapting Aloha: Virus Forces Changes to Hawaii Customs](#)

Travel Pulse: [What Will US Travel Look Like After COVID-19?](#)

State of Hawai'i Hotel Performance by Week - 2020 vs 2019

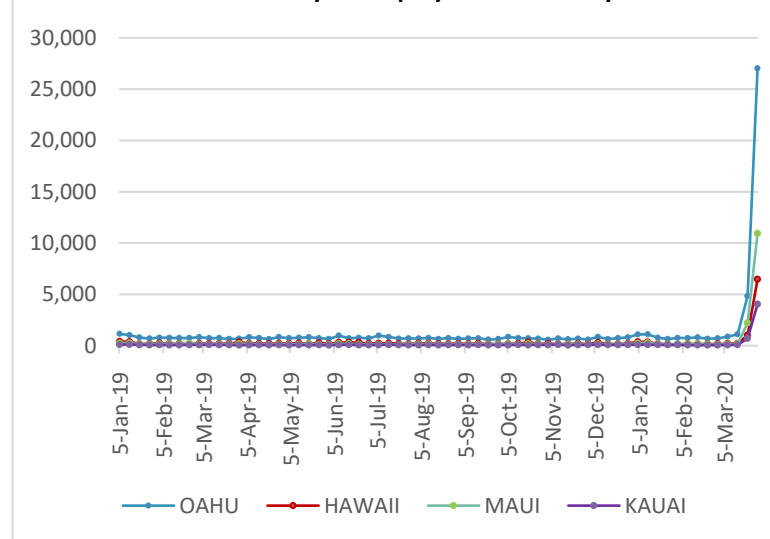


Hawaii Hotel Performance Info:

For the week of March 22-28, 2020

	Occupancy	ADR	RevPAR
State of Hawaii	10.5%	\$ 201.36	\$ 21.20
Oahu	10.5%	\$ 175.77	\$ 18.45
Maui County	10.2%	\$ 251.75	\$ 25.59
Kauai County	9.4%	\$ 220.67	\$ 20.67
Island of Hawaii	12.2%	\$ 214.80	\$ 26.11

2020 Initial Weekly Unemployment Claims by Island



Weekly Unemployment Initial Claims: March 28, 2020

State of Hawaii	48,639
C&C of Oahu	27,020
Maui County	10,933
Hawaii County	6,467
Kauai County	4,037
Agent (fled in Hawaii against another state)	182

Helpful Resources

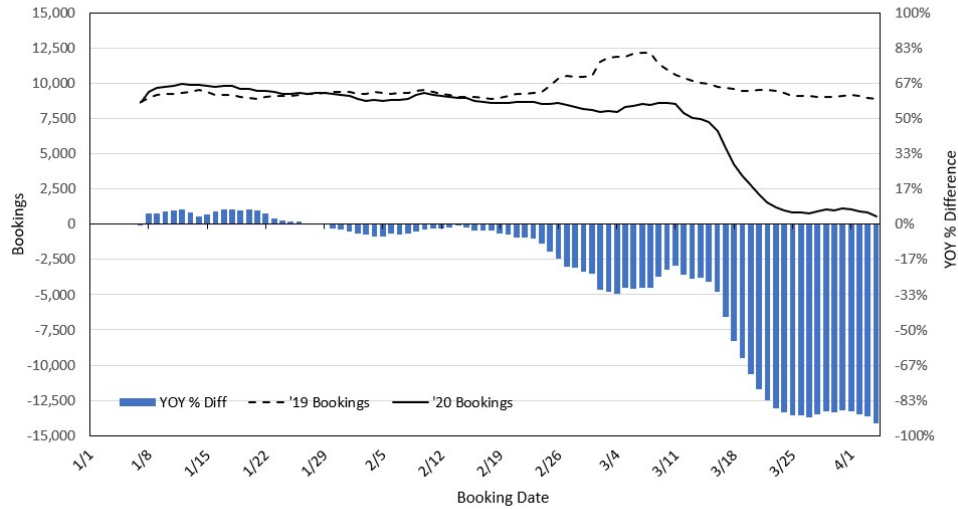
Department of Health
<https://hawaiicovid19.com/>

Department of Health
<https://health.hawaii.gov/docd/advisories/novel-coronavirus-2019>

Dept. of Business, Economic Development & Tourism
<https://dbedt.hawaii.gov/economic/covid19/>

Department of Transportation
<https://hidot.hawaii.gov/coronavirus/>

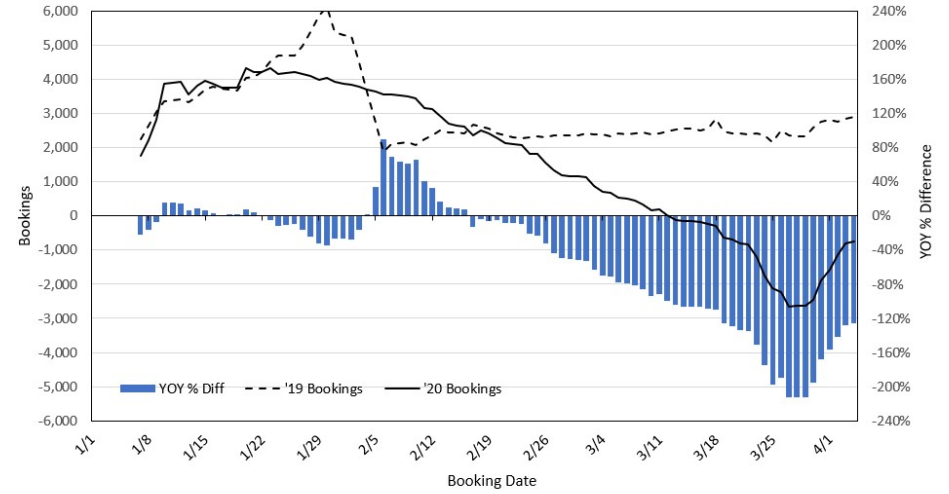
Travel Agency Bookings to Hawaii for Future Arrivals* Based on a 7-day Moving Average, 2020 vs 2019 U.S.



*Future Arrivals refers to all arrivals that are 'future' relative to the referenced booking date.
Source: Global Agency Pro

Update: Apr 4, 2020

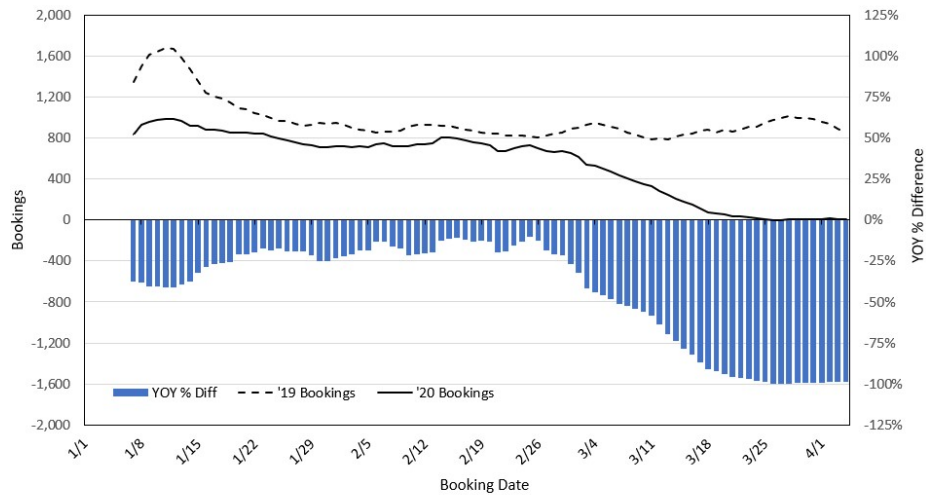
Travel Agency Bookings to Hawaii for Future Arrivals* Based on a 7-day Moving Average, 2020 vs 2019 Japan



*Future Arrivals refers to all arrivals that are 'future' relative to the referenced booking date.
Source: Global Agency Pro

Update: Apr 4, 2020

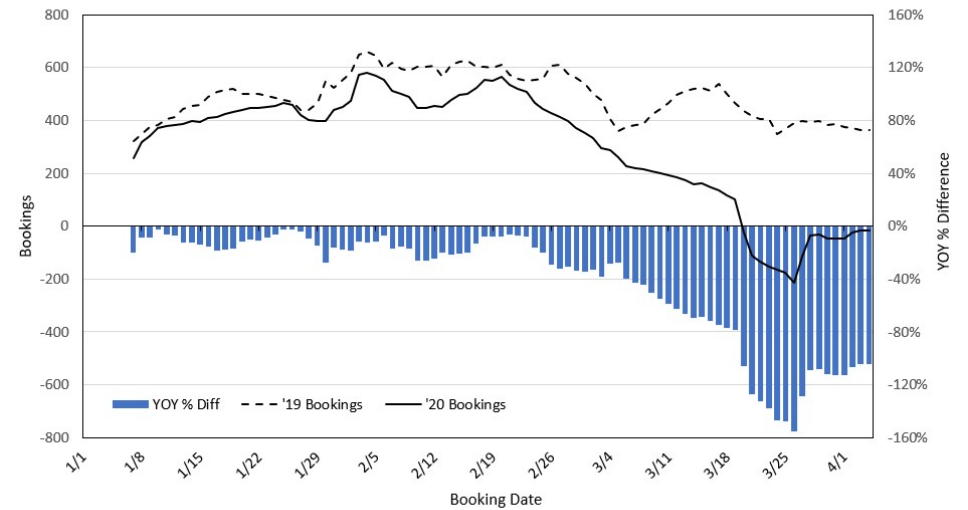
Travel Agency Bookings to Hawaii for Future Arrivals* Based on a 7-day Moving Average, 2020 vs 2019 Canada



*Future Arrivals refers to all arrivals that are 'future' relative to the referenced booking date.
Source: Global Agency Pro

Update: Apr 4, 2020

Travel Agency Bookings to Hawaii for Future Arrivals* Based on a 7-day Moving Average, 2020 vs 2019 Australia



*Future Arrivals refers to all arrivals that are 'future' relative to the referenced booking date.
Source: Global Agency Pro

Update: Apr 4, 2020