

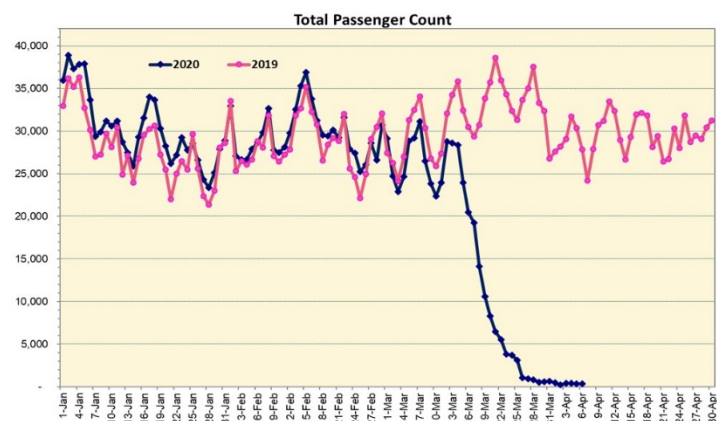
HTA COVID-19 UPDATE

(Issued: 4/7/20 @ 3:30pm)

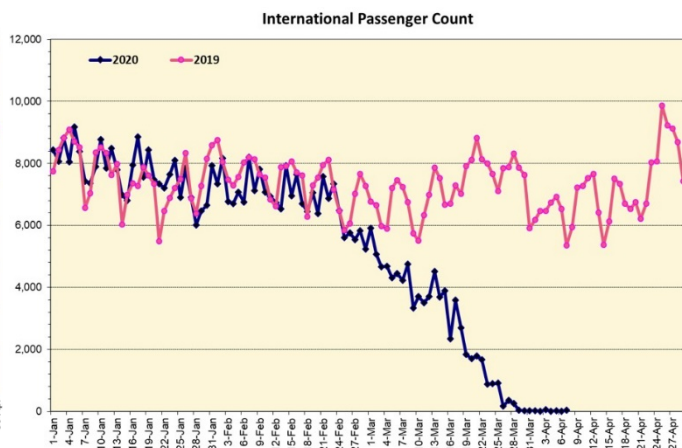
Novel Coronavirus in Hawaii

COVID-19 Positive* Cases

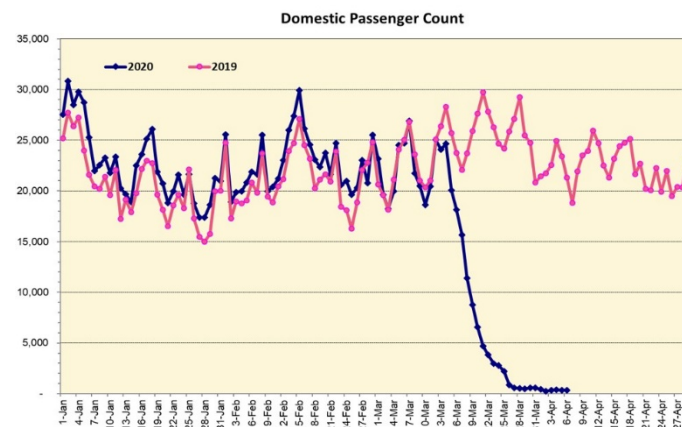
Cumulative totals as of 12:00 noon on April 7, 2020



Note: Excludes flights from Canada



Note: Excludes flights from Canada



Daily Passenger Count Table

04/06/2020	Domestic	International	Total
Oahu	280	0	280
Maui	18		18
Island of Hawaii	21		21
Kauai	18		18
State	337	0	337

4/7/20 Hawaii Passenger Arrivals by Air Update

Yesterday, 513 people arrived in Hawaii including 133 visitors and 182 residents. Mandatory 14-day, self-quarantine is required for all passengers arriving from out of state and also covers interisland travelers. This table shows the number of people who arrived by air from out of state yesterday and does not include interisland travel.

	Kona	Maui	Oahu	Lihue	Total
Crew	2	3	120	2	127
Intended New Resident	3		46		49
Resident	8	6	163	5	182
Transit			22		22
Visitor	7	2	111	13	133
Grand Total	20	11	462	20	513
Flights	1	2	12	2	17

Statewide	Total
Total Cases	410 (23 new)
Released from Isolation†	113
Required Hospitalization	42
Deaths	5
BY COUNTY	Total
Hawaii County	
Total Cases	23
Released from Isolation†	9
Required Hospitalization	0
Deaths	0
Honolulu County	
Total Cases	312
Released from Isolation†	83
Required Hospitalization	36
Deaths	4
Kauai County	
Total Cases	18
Released from Isolation†	7
Required Hospitalization	1
Deaths	0
Maui County	
Total Cases	48
Released from Isolation†	14
Required Hospitalization	5
Deaths	1
HI Residents diagnosed outside of HI	2
County Pending	7

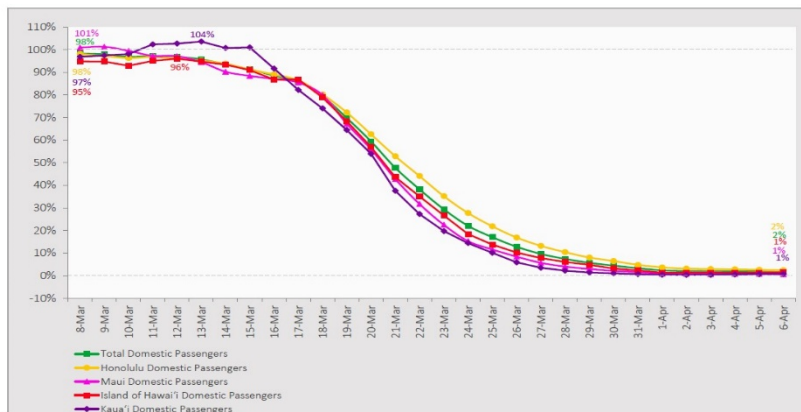
*includes presumptive and confirmed cases, data are preliminary and subject to change; note that CDC provides case counts according to states of residence.

†Isolation should be maintained until at least 3 days (72 hours) after resolution of fever and myalgia without the use of antipyretics OR at least 7 days have passed since symptom onset, whichever is longer.

7-Day Domestic by Island Moving Average Daily Passenger Volume

2020 Volume as Percentage of 2019 Volume

Through April 6, 2020



Domestic by Island Month-to-Date and Year-to-Date Daily Passenger Volume

2020 Volume versus 2019 Volume

Through April 6, 2020

April 2020 (Month-to-Date through April 6)

	2020	2019	Volume Change	Percent Change
Honolulu	1,601	72,091	-70,490	-97.8%
Maui County	206	36,413	-36,207	-99.4%
Island of Hawai'i	193	16,775	-16,582	-98.8%
Kaua'i	93	10,994	-10,901	-99.2%
Total	2,093	136,273	-134,180	-98.5%

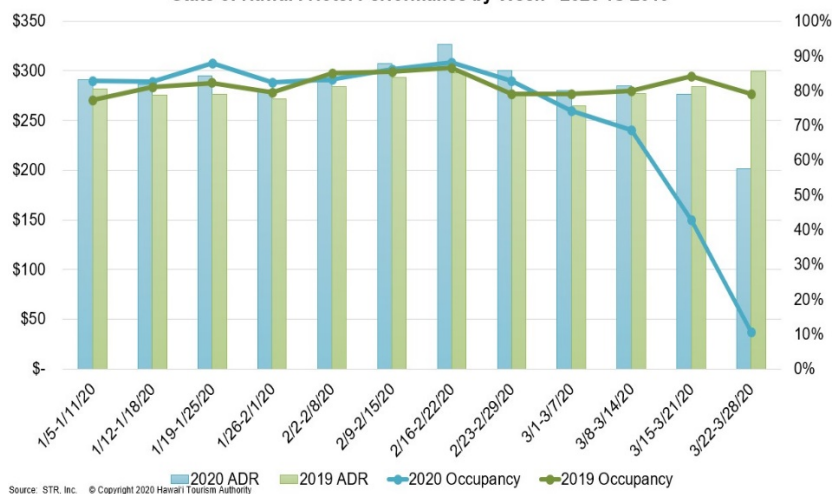
2020 (Year-to-Date through April 6)

	2020	2019	Volume Change	Percent Change
Honolulu	965,816	1,143,114	-177,298	-15.5%
Maui County	441,048	524,037	-82,989	-15.8%
Island of Hawai'i	216,301	266,273	-49,972	-18.8%
Kaua'i	148,697	188,411	-39,714	-21.1%
Total	1,771,862	2,121,835	-349,973	-16.5%

Source: HVCB analysis based on data from DBEDT

Note: Passenger volume figures include both visitors and residents. Total includes other international passengers. 2020 includes one additional day due to Leap Year (February 29th, 2020).

State of Hawai'i Hotel Performance by Week - 2020 vs 2019

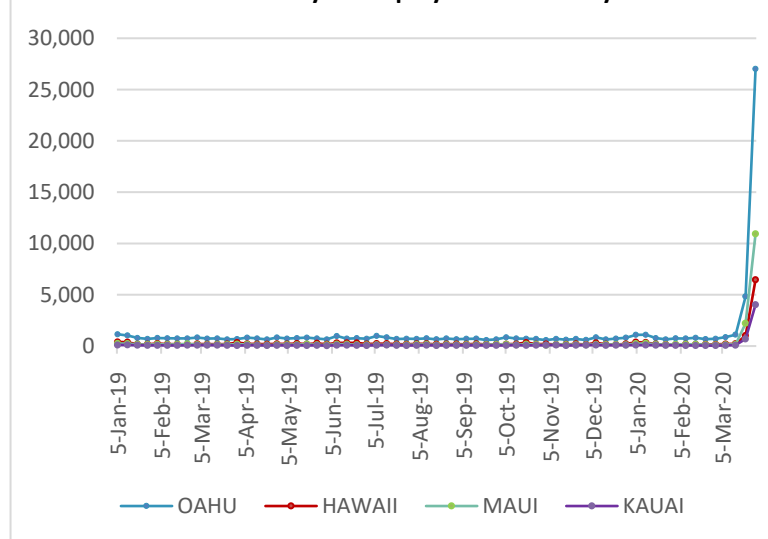


Hawaii Hotel Performance Info:

For the week of March 22-28, 2020

	Occupancy	ADR	RevPAR
State of Hawaii	10.5%	\$ 201.36	\$ 21.20
Oahu	10.5%	\$ 175.77	\$ 18.45
Maui County	10.2%	\$ 251.75	\$ 25.59
Kauai County	9.4%	\$ 220.67	\$ 20.67
Island of Hawaii	12.2%	\$ 214.80	\$ 26.11

2020 Initial Weekly Unemployment Claims by Island



Weekly Unemployment Initial Claims: March 28, 2020

State of Hawaii	48,639
C&C of Oahu	27,020
Maui County	10,933
Hawaii County	6,467
Kauai County	4,037
Agent (fled in Hawaii against another state)	182

News Highlights

April 7, 2020

Honolulu Star-Advertiser:

[Quarantine of Hawaii interisland visitors lacks enforcement](#)

Honolulu Star-Advertiser: [Hawaii tourism agency pays to send visitors home amid coronavirus crisis](#)

KITV4: [Hotels for Heroes kicks off across the state](#)

Big Island Now: [PMG Opens \\$2 Million Marketing Grant Fund for Hawaii Businesses](#)

Hawaii Tribune-Herald: [Hilo restaurants reeling](#)

Honolulu Civil Beat: [Ige, UH Economists Agree: COVID-19 Testing May Be Key To Restoring Tourism](#)

The Garden Island: [8 active COVID-19 cases on Kauai](#)

West Hawaii Today: [Donations in demand: Kohala resident leading effort to supply Big Island medical facilities with PPE](#)

Forbes: [What You Need To Know About The Coronavirus In Hawaii](#)

Associations Now: [Five Ways to Create Better Engagement During Virtual Events](#)

Helpful Resources

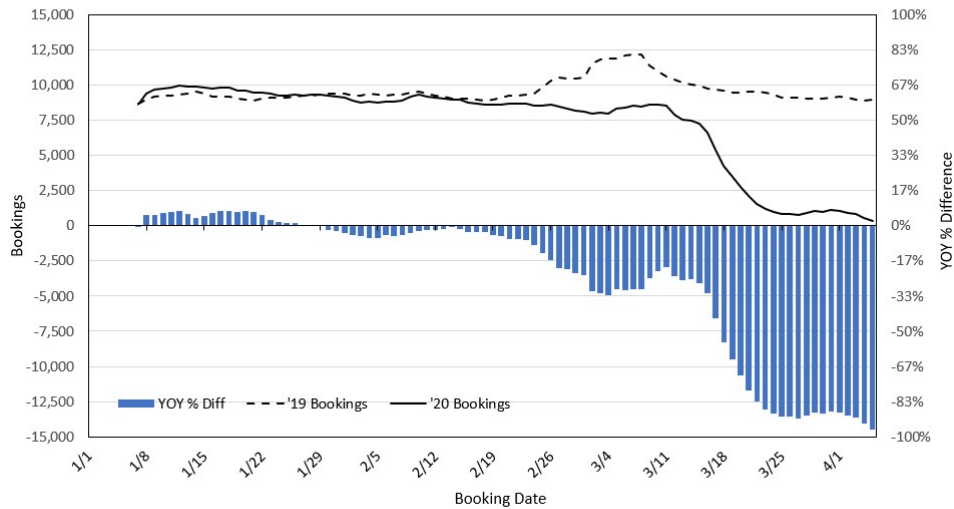
Department of Health
<https://hawaiicovid19.com/>

Department of Health
<https://health.hawaii.gov/docd/advisories/novel-coronavirus-2019>

Dept. of Business, Economic Development & Tourism
<https://dbedt.hawaii.gov/economic/covid19/>

Department of Transportation
<https://hidot.hawaii.gov/coronavirus/>

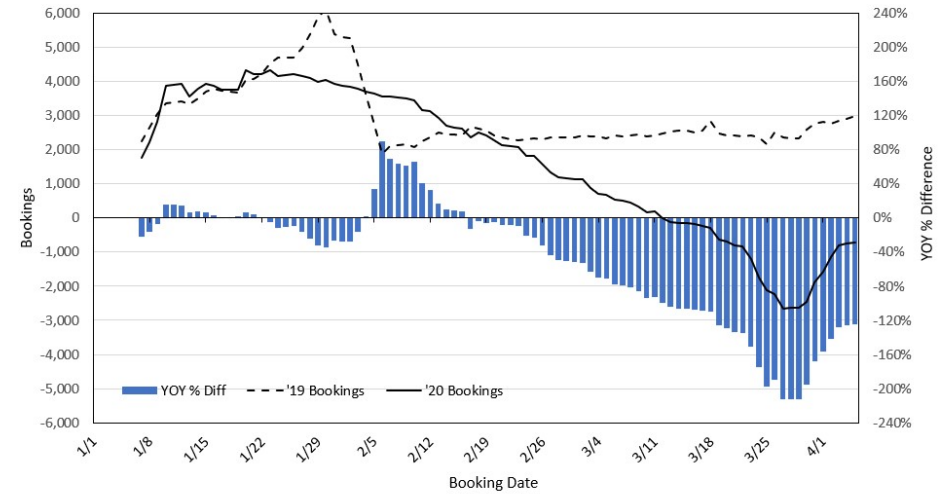
Travel Agency Bookings to Hawaii for Future Arrivals* Based on a 7-day Moving Average, 2020 vs 2019 U.S.



*Future Arrivals refers to all arrivals that are 'future' relative to the referenced booking date.
Source: Global Agency Pro

Update: Apr 5, 2020

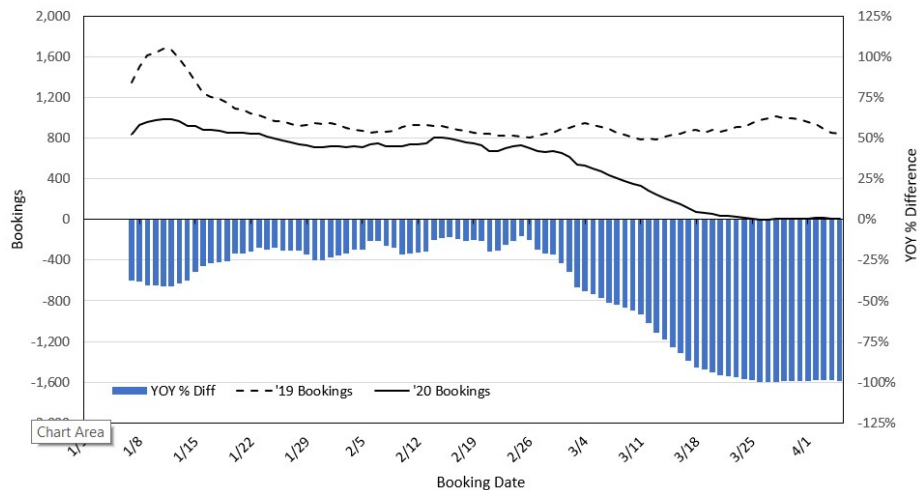
Travel Agency Bookings to Hawaii for Future Arrivals* Based on a 7-day Moving Average, 2020 vs 2019 Japan



*Future Arrivals refers to all arrivals that are 'future' relative to the referenced booking date.
Source: Global Agency Pro

Update: Apr 5, 2020

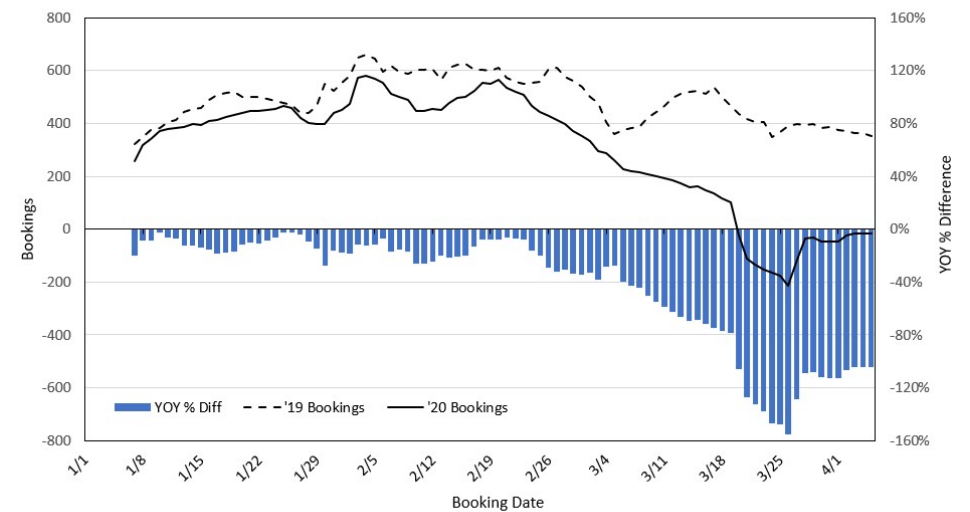
Travel Agency Bookings to Hawaii for Future Arrivals* Based on a 7-day Moving Average, 2020 vs 2019 Canada



*Future Arrivals refers to all arrivals that are 'future' relative to the referenced booking date.
Source: Global Agency Pro

Update: Apr 5, 2020

Travel Agency Bookings to Hawaii for Future Arrivals* Based on a 7-day Moving Average, 2020 vs 2019 Australia



*Future Arrivals refers to all arrivals that are 'future' relative to the referenced booking date.
Source: Global Agency Pro

Update: Apr 5, 2020