

# HTA COVID-19 UPDATE

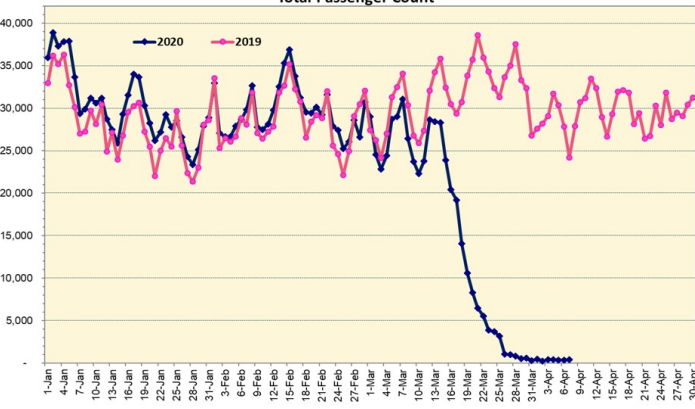
(Issued: 4/8/20 @ 4:00pm)

## Novel Coronavirus in Hawaii

COVID-19 Positive\* Cases

Cumulative totals as of 12:00 noon on April 8, 2020

Total Passenger Count



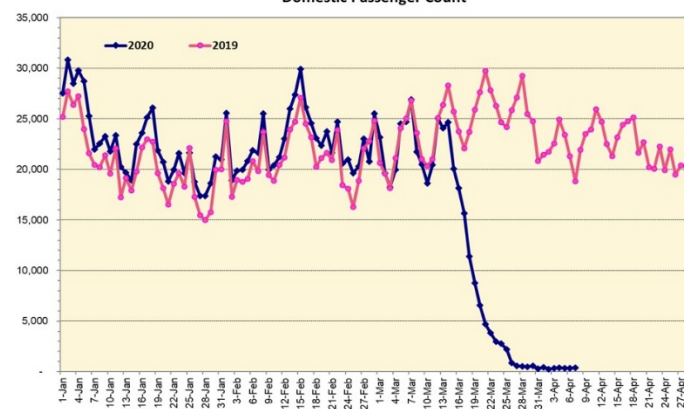
Note: Excludes flights from Canada

International Passenger Count



Note: Excludes flights from Canada

Domestic Passenger Count



### Daily Passenger Count Table

04/07/2020	Domestic	International	Total
Oahu	260	40	300
Maui	35		35
Island of Hawaii	71		71
Kauai	12		12
State	378	40	418

### 4/8/20 Hawaii Passenger Arrivals by Air Update

Yesterday, 654 people arrived in Hawaii including 160 visitors and 239 residents. Mandatory 14-day, self-quarantine is required for all passengers arriving from out of state and also covers interisland travelers. This table shows the number of people who arrived by air from out of state yesterday and does not include interisland travel.

	Kona	Maui	Oahu	Lihue	Total
Crew	7	14	104	6	131
Intended New Resident	6		67		73
Resident	34	24	178	3	239
Transit	1	2	48		51
Visitor	31	9	111	9	160
<b>Grand Total</b>	<b>79</b>	<b>49</b>	<b>508</b>	<b>18</b>	<b>654</b>
Flights	3	3	13	1	20

### Statewide

### Total

Total Cases

435 (25new)

Released from Isolation†

113

Required Hospitalization

42

Deaths

5

### BY COUNTY

### Total

### Hawaii County

Total Cases

26

Released from Isolation†

9

Required Hospitalization

0

Deaths

0

### Honolulu County

Total Cases

328

Released from Isolation†

83

Required Hospitalization

36

Deaths

4

### Kauai County

Total Cases

18

Released from Isolation†

7

Required Hospitalization

1

Deaths

0

### Maui County

Total Cases

54

Released from Isolation†

14

Required Hospitalization

5

Deaths

1

### HI Residents diagnosed outside of HI

2

### County Pending

7

\*includes presumptive and confirmed cases, data are preliminary and subject to change; note that CDC provides case counts according to states of residence.

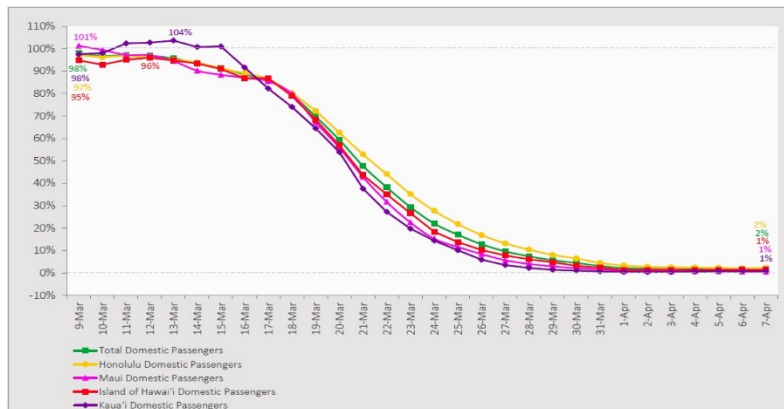
†Isolation should be maintained until at least 3 days (72 hours) after resolution of fever and myalgia without the use of antipyretics OR at least 7 days have passed since symptom onset, whichever is longer.

Market Impact Update: <https://www.dropbox.com/4/8/2020 HTA COVID19 Update>

## 7-Day Domestic by Island Moving Average Daily Passenger Volume

2020 Volume as Percentage of 2019 Volume

Through April 7, 2020



## Domestic by Island Month-to-Date and Year-to-Date Daily Passenger Volume

2020 Volume versus 2019 Volume

Through April 7, 2020

April 2020 (Month-to-Date through April 7)

	2020	2019	Volume Change	Percent Change
Honolulu	1,861	84,071	-82,210	-97.8%
Maui County	241	43,111	-42,870	-99.4%
Island of Hawai'i	264	19,521	-19,257	-98.6%
Kaua'i	95	12,984	-12,889	-99.3%
Total	2,461	159,687	-157,226	-98.5%

2020 (Year-to-Date through April 7)

	2020	2019	Volume Change	Percent Change
Honolulu	965,761	1,155,094	-189,333	-16.4%
Maui County	441,083	530,735	-89,652	-16.9%
Island of Hawai'i	216,372	269,019	-52,647	-19.6%
Kaua'i	148,699	190,401	-41,702	-21.9%
Total	1,771,915	2,145,249	-373,334	-17.4%

Source: HVCB analysis based on data from DBEDT

Note: Passenger volume figures include both visitors and residents. Total includes other international passengers. 2020 includes one additional day due to Leap Year (February 29th, 2020).

## News Highlights

April 8, 2020

**Honolulu Star-Advertiser:** [HVCB is asking partners to stop encouraging travel to Hawaii](#)

**KHON2:** [New program helps visitors go back home if they can't quarantine for 14 days in Hawaii](#)

**Hawaii News Now:** [Citing persistent trickle of visitors, mayor renews call for stop to non-essential travel to Hawaii](#)

**Hawaii News Now:** ['They never checked in:' Kona woman who returned from New York questions quarantine enforcement](#)

**Pacific Business News:** [Hotels across the state offer free rooms to health care workers, first responders](#)

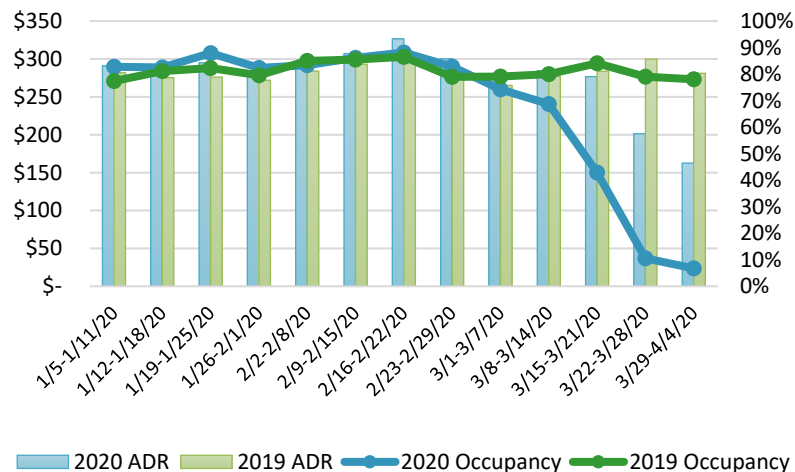
**The Garden Island:** ['Where are you going?'](#)

**ABC News:** [Hawaii mayor: Florida man flouting quarantine was 'Covidiot'](#)

**Reuters:** [China's Wuhan ends its coronavirus lockdown but elsewhere one begins](#)

**Travel Market Report:** [Travelers Want Spread of COVID-19 to Slowdown Before Taking a Trip, Feel Safest in Cars](#)

## State of Hawaii Hotel Performance by Week - 2020 vs 2019

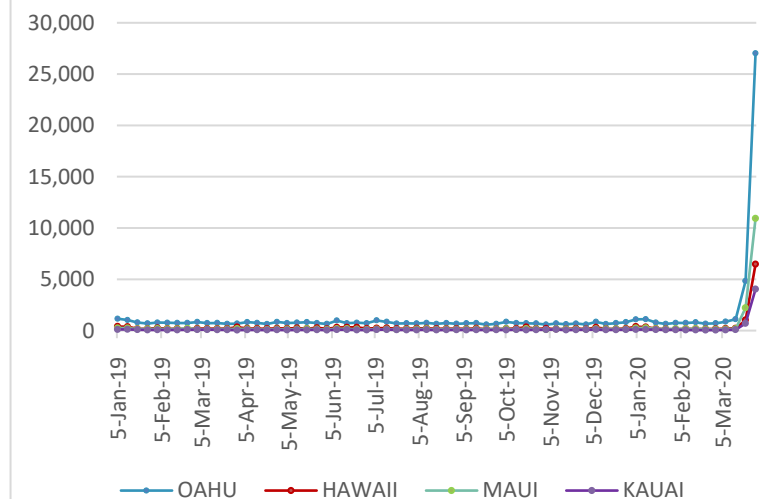


## Hawaii Hotel Performance Info:

For the week of March 29 – April 4, 2020

	Occupancy	ADR	RevPAR
State of Hawaii	6.8%	\$ 162.59	\$ 10.99
Oahu	7.0%	\$ 153.61	\$ 10.83
Maui County	6.9%	\$ 186.09	\$ 12.92
Kauai County	5.4%	\$ 198.37	\$ 10.70
Island of Hawaii	6.0%	\$ 138.24	\$ 8.36

## 2020 Initial Weekly Unemployment Claims by Island



## Weekly Unemployment Initial Claims: March 28, 2020

State of Hawaii	48,639
C&C of Oahu	27,020
Maui County	10,933
Hawaii County	6,467
Kauai County	4,037
Agent (fled in Hawaii against another state)	182

## Helpful Resources

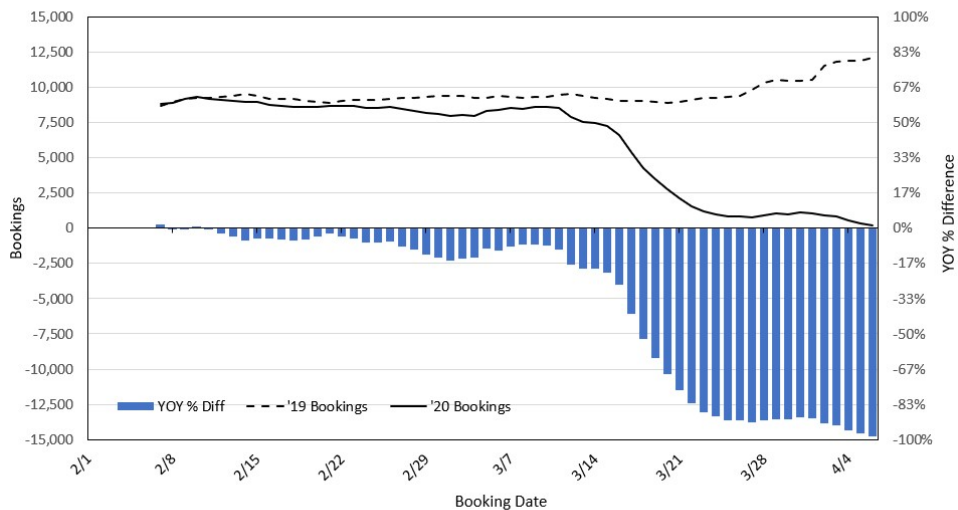
Department of Health  
<https://hawaiicovid19.com/>

Department of Health  
<https://health.hawaii.gov/docd/advisories/novel-coronavirus-2019>

Dept. of Business, Economic Development & Tourism  
<https://dbedt.hawaii.gov/economic/covid19/>

Department of Transportation  
<https://hidot.hawaii.gov/coronavirus/>

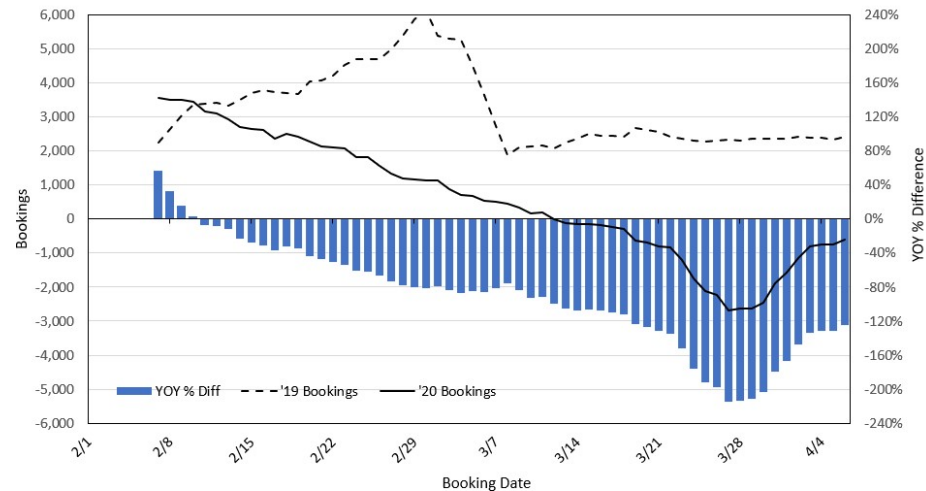
### Travel Agency Bookings to Hawaii for Future Arrivals\* Based on a 7-day Moving Average, 2020 vs 2019 U.S.



\*Future Arrivals refers to all arrivals that are 'future' relative to the referenced booking date.  
Source: Global Agency Pro

Update: Apr 6, 2020

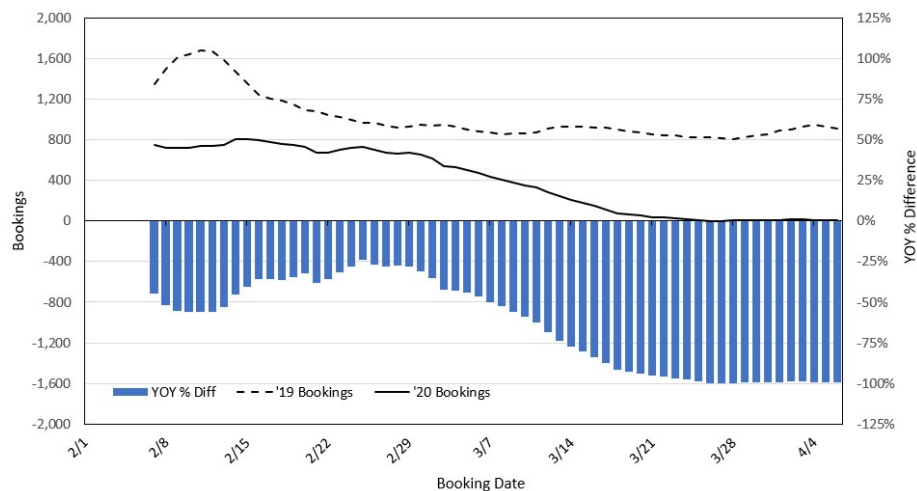
### Travel Agency Bookings to Hawaii for Future Arrivals\* Based on a 7-day Moving Average, 2020 vs 2019 Japan



\*Future Arrivals refers to all arrivals that are 'future' relative to the referenced booking date.  
Source: Global Agency Pro

Update: Apr 6, 2020

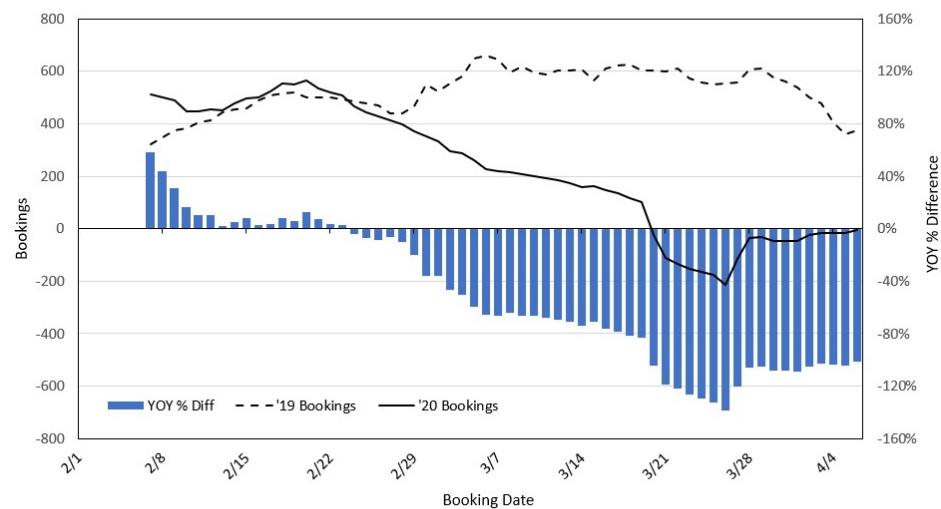
### Travel Agency Bookings to Hawaii for Future Arrivals\* Based on a 7-day Moving Average, 2020 vs 2019 Canada



\*Future Arrivals refers to all arrivals that are 'future' relative to the referenced booking date.  
Source: Global Agency Pro

Update: Apr 6, 2020

### Travel Agency Bookings to Hawaii for Future Arrivals\* Based on a 7-day Moving Average, 2020 vs 2019 Australia



\*Future Arrivals refers to all arrivals that are 'future' relative to the referenced booking date.  
Source: Global Agency Pro

Update: Apr 6, 2020