

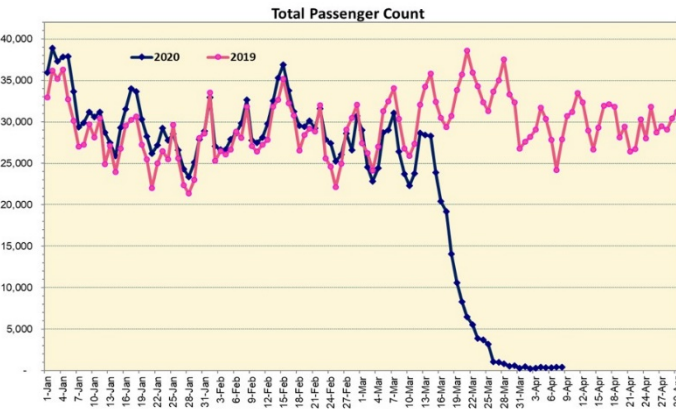
# HTA COVID-19 UPDATE

(Issued: 4/9/20 @ 3:30pm)

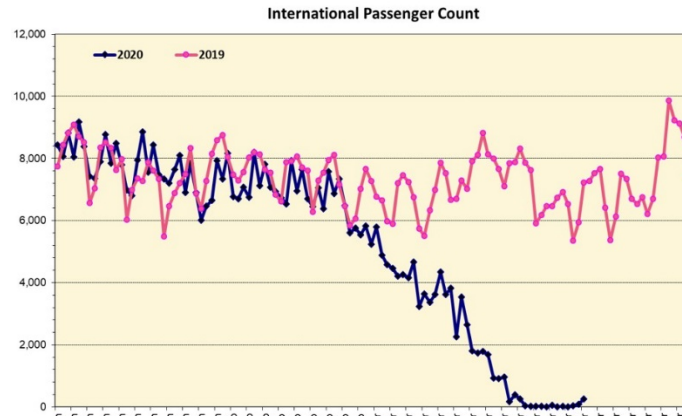
## Novel Coronavirus in Hawaii

COVID-19 Positive\* Cases

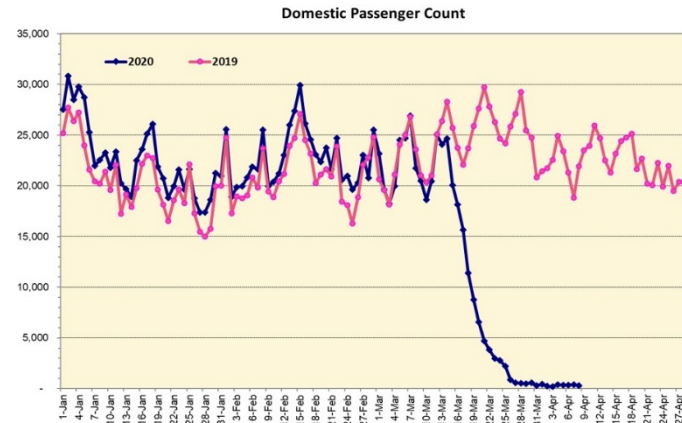
Cumulative totals as of 12:00 noon on April 9, 2020



Note: Excludes flights from Canada



Note: Excludes flights from Canada



### Daily Passenger Count Table

| 04/08/2020       | Domestic | International | Total |
|------------------|----------|---------------|-------|
| Oahu             | 192      | 96            | 288   |
| Maui             | 57       |               | 57    |
| Island of Hawaii | 48       |               | 48    |
| Kauai            | 22       |               | 22    |
| State            | 378      | 96            | 474   |

### 4/9/20 Hawaii Passenger Arrivals by Air Update

Yesterday, 689 people arrived in Hawaii including 107 visitors and 274 residents. Mandatory 14-day, self-quarantine is required for all passengers arriving from out of state and also covers interisland travelers. This table shows the number of people who arrived by air from out of state yesterday and does not include interisland travel.

|                       | Kona      | Maui      | Oahu       | Lihue     | Total      |
|-----------------------|-----------|-----------|------------|-----------|------------|
| Crew                  | 1         | 7         | 115        | 2         | 125        |
| Intended New Resident | 4         | 6         | 31         |           | 41         |
| Resident              | 33        | 33        | 196        | 12        | 274        |
| Transit               |           |           | 141        | 1         | 142        |
| Visitor               | 4         | 22        | 71         | 10        | 107        |
| <b>Grand Total</b>    | <b>42</b> | <b>68</b> | <b>554</b> | <b>25</b> | <b>689</b> |
| Flights               | 1         | 3         | 13         | 3         | 20         |

Market Impact Update: <https://www.dropbox.com/4/9/2020 HTA COVID19 Update>

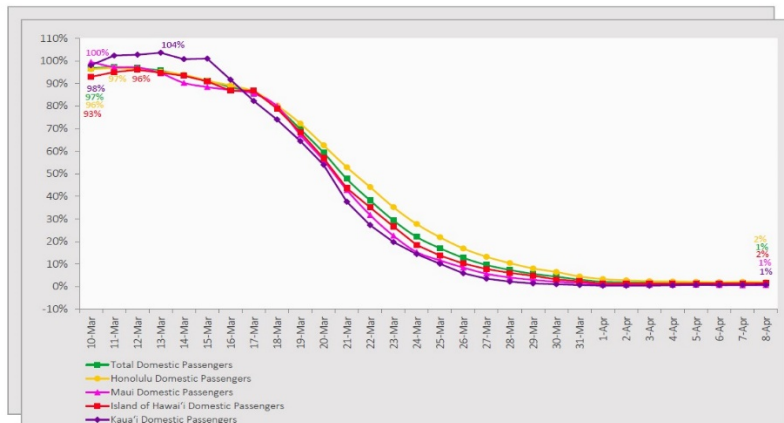
| Statewide                            | Total       |
|--------------------------------------|-------------|
| Total Cases                          | 442 (7 new) |
| Released from Isolation†             | 251         |
| Required Hospitalization             | 42          |
| Deaths                               | 6           |
| BY COUNTY                            | Total       |
| Hawaii County                        |             |
| Total Cases                          | 28          |
| Released from Isolation†             | 21          |
| Required Hospitalization             | 0           |
| Deaths                               | 0           |
| Honolulu County                      |             |
| Total Cases                          | 334         |
| Released from Isolation†             | 188         |
| Required Hospitalization             | 36          |
| Deaths                               | 4           |
| Kauai County                         |             |
| Total Cases                          | 18          |
| Released from Isolation†             | 11          |
| Required Hospitalization             | 1           |
| Deaths                               | 0           |
| Maui County                          |             |
| Total Cases                          | 57          |
| Released from Isolation†             | 31          |
| Required Hospitalization             | 5           |
| Deaths                               | 2           |
| HI Residents diagnosed outside of HI | 2           |
| County Pending                       | 3           |

\*includes presumptive and confirmed cases, data are preliminary and subject to change; note that CDC provides case counts according to states of residence.

†Isolation should be maintained until at least 3 days (72 hours) after resolution of fever and myalgia without the use of antipyretics OR at least 7 days have passed since symptom onset, whichever is longer.

## 7-Day Domestic by Island Moving Average Daily Passenger Volume

2020 Volume as Percentage of 2019 Volume  
Through April 8, 2020



Source: HVCB analysis based on data from DBEDT  
Note: Passenger volume figures include both visitors and residents.

## Domestic by Island Month-to-Date and Year-to-Date Daily Passenger Volume

2020 Volume versus 2019 Volume  
Through April 8, 2020

April 2020 (Month-to-Date through April 8)

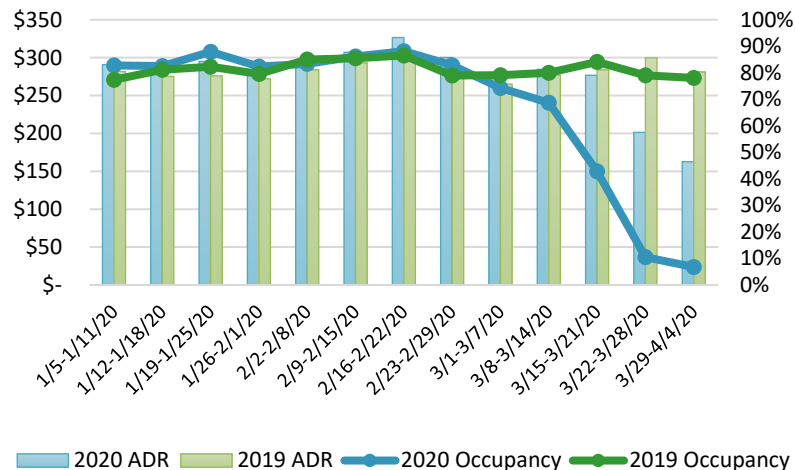
|                   | 2020  | 2019    | Volume Change | Percent Change |
|-------------------|-------|---------|---------------|----------------|
| Honolulu          | 1,926 | 95,946  | -94,020       | -98.0%         |
| Maui County       | 309   | 48,672  | -48,363       | -99.4%         |
| Island of Hawai'i | 313   | 21,726  | -21,413       | -98.6%         |
| Kaua'i            | 117   | 14,661  | -14,544       | -99.2%         |
| Total             | 2,665 | 181,005 | -178,340      | -98.5%         |

2020 (Year-to-Date through April 8)

|                   | 2020      | 2019      | Volume Change | Percent Change |
|-------------------|-----------|-----------|---------------|----------------|
| Honolulu          | 965,826   | 1,166,969 | -201,143      | -17.2%         |
| Maui County       | 441,151   | 536,296   | -95,145       | -17.7%         |
| Island of Hawai'i | 216,421   | 271,224   | -54,803       | -20.2%         |
| Kaua'i            | 148,721   | 192,078   | -43,357       | -22.6%         |
| Total             | 1,772,119 | 2,166,567 | -394,448      | -18.2%         |

Source: HVCB analysis based on data from DBEDT  
Note: Passenger volume figures include both visitors and residents. Total includes other international passengers. 2020 includes one additional day due to Leap Year (February 29th, 2020).

## State of Hawaii Hotel Performance by Week - 2020 vs 2019



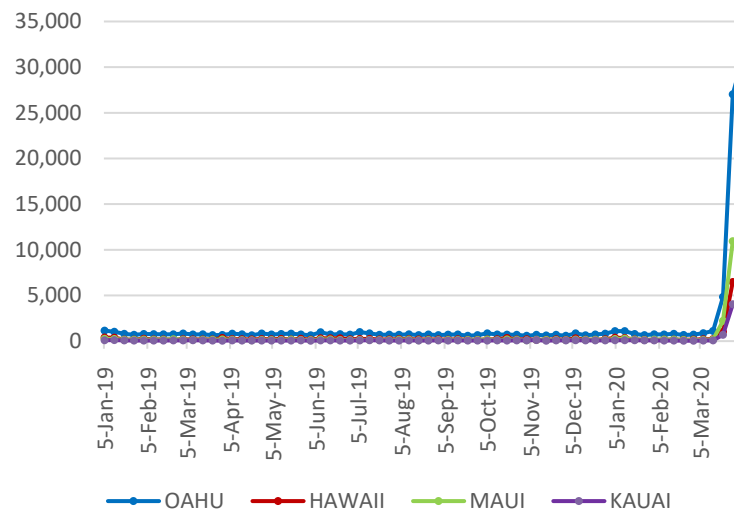
Source: STR, Inc. © Copyright 2020 Hawai'i Tourism Authority

## Hawaii Hotel Performance Info:

For the week of March 29 – April 4, 2020

|                  | Occupancy | ADR       | RevPAR   |
|------------------|-----------|-----------|----------|
| State of Hawaii  | 6.8%      | \$ 162.59 | \$ 10.99 |
| Oahu             | 7.0%      | \$ 153.61 | \$ 10.83 |
| Maui County      | 6.9%      | \$ 186.09 | \$ 12.92 |
| Kauai County     | 5.4%      | \$ 198.37 | \$ 10.70 |
| Island of Hawaii | 6.0%      | \$ 138.24 | \$ 8.36  |

## 2020 Initial Weekly Unemployment Claims by Island



## Weekly Unemployment Initial Claims: April 4, 2020

|  |        |
|--|--------|
| State of Hawaii                              | 53,111 |
| C&C of Oahu                                  | 30,958 |
| Maui County                                  | 10,394 |
| Hawaii County                                | 7,063  |
| Kauai County                                 | 4,476  |
| Agent (fled in Hawaii against another state) | 220    |

## News Highlights

April 9, 2020

**Hawaii News Now:** [Lawmakers want changes to keep visitors out of Hawaii during the pandemic](#)

**Hawaii Tribune-Herald:** [Quarantine enforcement impeded by lag in getting traveler data from state tourism agency](#)

**The Garden Island:** [Ticketed for sunbathing](#)

**Honolulu Star-Advertiser:** [More visitors continue to arrive in Hawaii by air](#)

**The Maui News:** [Two Mainland visitors sent home](#)

**Big Island Now:** [County Council Joins Support in Ban of Non-Essential Travel to Hawaii](#)

**Hawaii Magazine:** [Take a Virtual Tour of Kauai's North Shore](#)

**Travel Pulse:** [17 Ways You Can Support the Travel Industry When Coronavirus Ends](#)

**Best Life:** [How to See the World's Most Beautiful Destinations From Your Couch](#)

**Forbes:** [Five Ways To Bring The Spirit Of Aloha Into Your Home](#)

## Helpful Resources

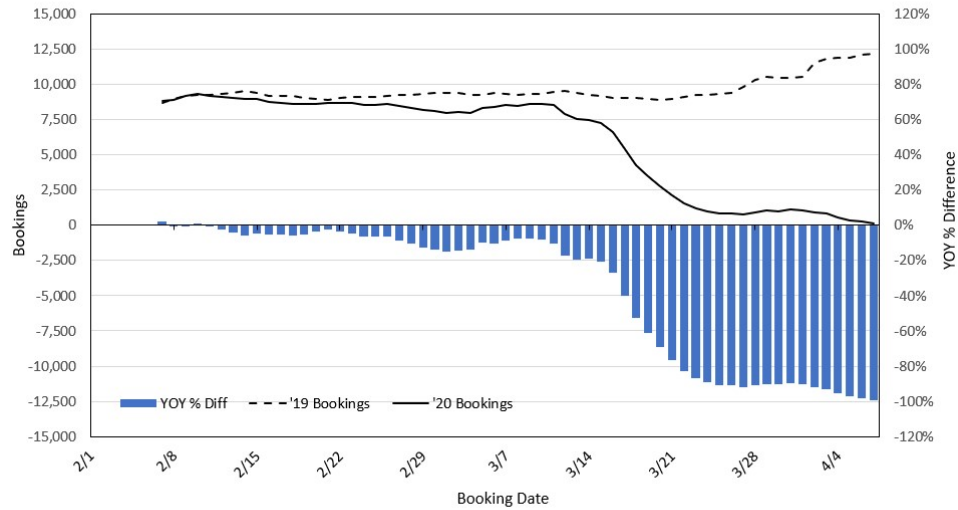
**Department of Health**  
<https://hawaicovid19.com/>

**Department of Health**  
<https://health.hawaii.gov/docd/advisories/novel-coronavirus-2019>

**Dept. of Business, Economic Development & Tourism**  
<https://dbedt.hawaii.gov/economic/covid19/>

**Department of Transportation**  
<https://hidot.hawaii.gov/coronavirus/>

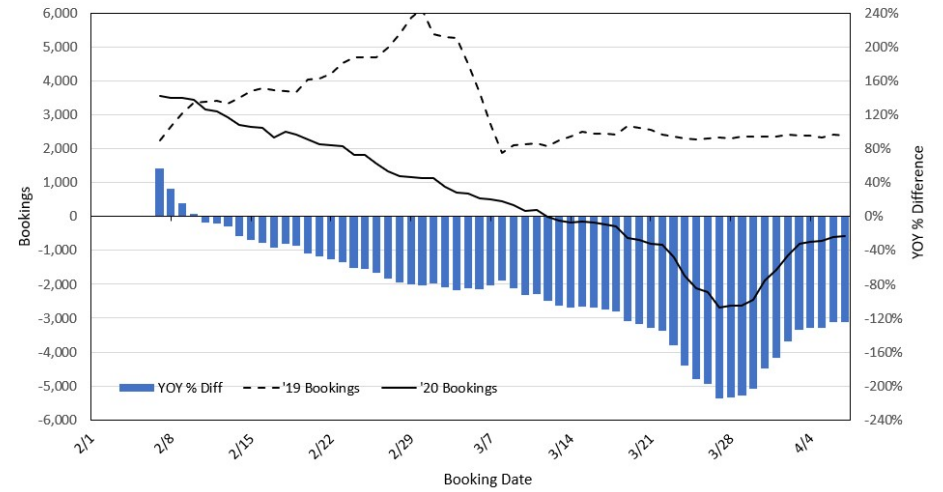
### Travel Agency Bookings to Hawaii for Future Arrivals\* Based on a 7-day Moving Average, 2020 vs 2019 U.S.



\*Future Arrivals refers to all arrivals that are 'future' relative to the referenced booking date.  
Source: Global Agency Pro

Update: Apr 7, 2020

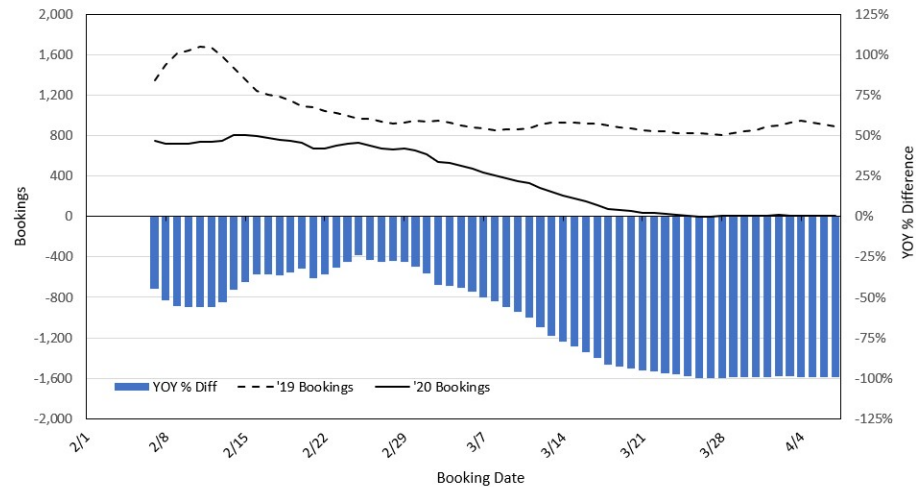
### Travel Agency Bookings to Hawaii for Future Arrivals\* Based on a 7-day Moving Average, 2020 vs 2019 Japan



\*Future Arrivals refers to all arrivals that are 'future' relative to the referenced booking date.  
Source: Global Agency Pro

Update: Apr 7, 2020

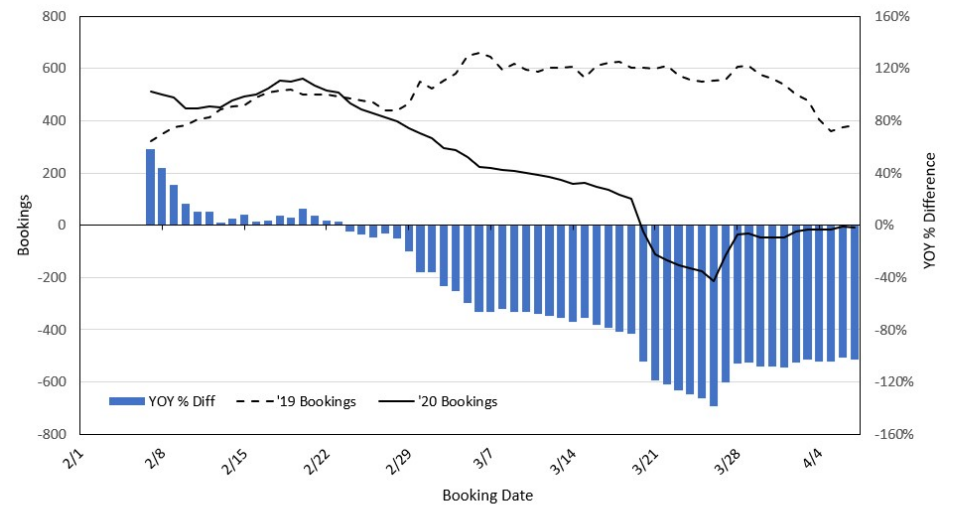
### Travel Agency Bookings to Hawaii for Future Arrivals\* Based on a 7-day Moving Average, 2020 vs 2019 Canada



\*Future Arrivals refers to all arrivals that are 'future' relative to the referenced booking date.  
Source: Global Agency Pro

Update: Apr 7, 2020

### Travel Agency Bookings to Hawaii for Future Arrivals\* Based on a 7-day Moving Average, 2020 vs 2019 Australia



\*Future Arrivals refers to all arrivals that are 'future' relative to the referenced booking date.  
Source: Global Agency Pro

Update: Apr 7, 2020