

# HTA COVID-19 UPDATE

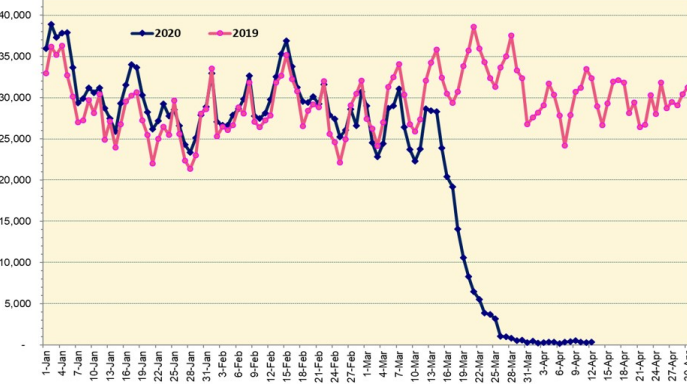
(Issued: 4/13/20 @ 4:00pm)

## Novel Coronavirus in Hawaii

COVID-19 Positive\* Cases

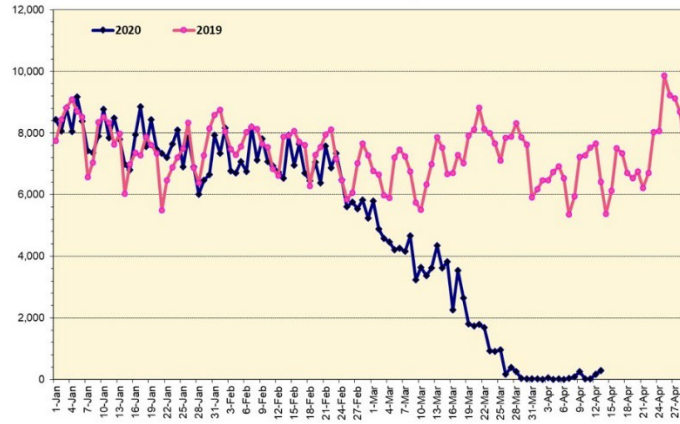
Cumulative totals as of 12:00 noon on April 13, 2020

Total Passenger Count



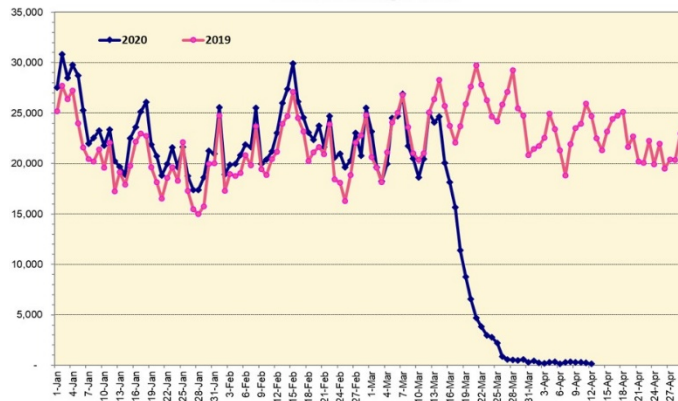
Note: Excludes flights from Canada

International Passenger Count



Note: Excludes flights from Canada

Domestic Passenger Count



### Daily Passenger Count Table

04/12/2020	Domestic	International	Total
Oahu	124	167	291
Maui	5		5
Island of Hawaii	23		23
Kauai	0		0
State	152	167	319

### 4/13/20 Hawaii Passenger Arrivals by Air Update

Yesterday, 543 people arrived in Hawaii including 91 visitors and 132 residents. Mandatory 14-day, self-quarantine is required for all passengers arriving from out of state and also covers interisland travelers. This table shows the number of people who arrived by air from out of state yesterday and does not include interisland travel.

	Kona	Maui	Oahu	Lihue	Total
Crew	6	6	110	3	125
Intended New Resident	2		22		24
Resident	16	4	112		132
Transit			171		171
Visitor	5	1	85		91
<b>Grand Total</b>	<b>29</b>	<b>11</b>	<b>500</b>	<b>3</b>	<b>543</b>
Flights	1	1	11	1	14

### Statewide

Total Cases **504 (5 new)**

Released from Isolation† 315

Required Hospitalization 44

Deaths 9

### BY COUNTY

#### Hawaii County

Total Cases 40

Released from Isolation† 28

Required Hospitalization 0

Deaths 0

#### Honolulu County

Total Cases 354

Released from Isolation† 233

Required Hospitalization 36

Deaths 6

#### Kauai County

Total Cases 21

Released from Isolation† 14

Required Hospitalization 1

Deaths 0

#### Maui County

Total Cases 86

Released from Isolation† 40

Required Hospitalization 7

Deaths 3

#### HI Residents diagnosed outside of HI

County Pending 3

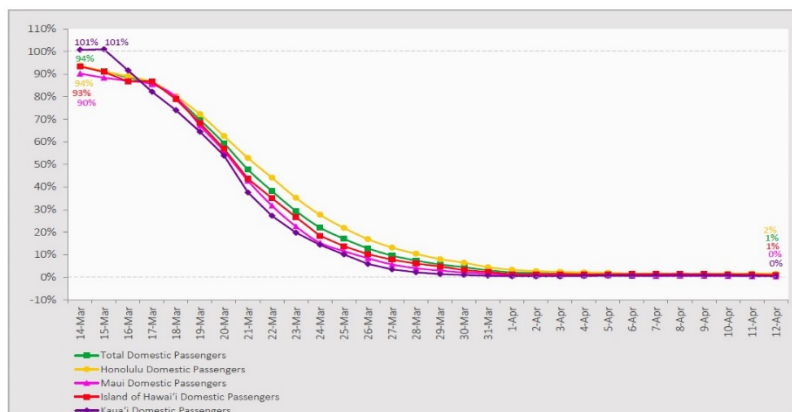
\*includes presumptive and confirmed cases, data are preliminary and subject to change; note that CDC provides case counts according to states of residence.

†Isolation should be maintained until at least 3 days (72 hours) after resolution of fever and myalgia without the use of antipyretics OR at least 7 days have passed since symptom onset, whichever is longer.

Market Impact Update: <https://www.dropbox.com/4/13/2020 HTA COVID19 Update>

## 7-Day Domestic by Island Moving Average Daily Passenger Volume

2020 Volume as Percentage of 2019 Volume  
Through April 12, 2020



## Domestic by Island Month-to-Date and Year-to-Date Daily Passenger Volume

2020 Volume versus 2019 Volume  
Through April 12, 2020

April 2020 (Month-to-Date through April 12)

	2020	2019	Volume Change	Percent Change
Honolulu	2,449	143,949	-141,500	-98.3%
Maui County	355	71,732	-71,377	-99.5%
Island of Hawai'i	376	31,702	-31,326	-98.8%
Kaua'i	131	21,796	-21,665	-99.4%
<b>Total</b>	<b>3,311</b>	<b>269,179</b>	<b>-265,868</b>	<b>-98.8%</b>

2020 (Year-to-Date through April 12)

	2020	2019	Volume Change	Percent Change
Honolulu	966,349	1,214,972	-248,623	-20.5%
Maui County	441,197	559,356	-118,159	-21.1%
Island of Hawai'i	216,484	281,200	-64,716	-23.0%
Kaua'i	148,735	199,213	-50,478	-25.3%
<b>Total</b>	<b>1,772,765</b>	<b>2,254,741</b>	<b>-481,976</b>	<b>-21.4%</b>

Source: HVCB analysis based on data from DBEDT

Note: Passenger volume figures include both visitors and residents. Total includes other international passengers. 2020 includes one additional day due to Leap Year (February 29th, 2020).

## News Highlights

April 13, 2020

**Honolulu Civil Beat:** [Hawaii Now Has 499 Confirmed COVID-19 Cases](#)

**Honolulu Star-Advertiser:** [9 visitors sent back to their home states under new coronavirus flight assistance program](#)

**Hawaii Tribune-Herald:** [Your Views for April 12](#)

**Hawaii News Now:** [Hotels for Heroes program criticized for turning many of those heroes away](#)

**Honolulu Star-Advertiser:** [Hawaii visitors slip in despite coronavirus crackdowns](#)

**The Garden Island:** [More COVID-19 closures](#)

**West Hawaii Today:** [Hanging on: Honokaa hit hard by pandemic, lockdown order](#)

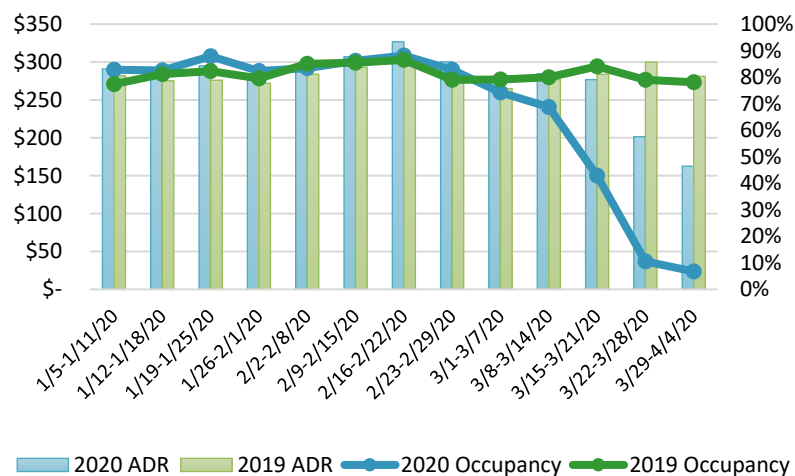
**West Hawaii Today:** [Letters to the Editor: April 13, 2020](#)

**Hawaii Magazine:** [Take a Virtual Tour of Kauai's North Shore](#)

**Travel Weekly:** [Some clients are self-isolating in villas or rentals, advisors say](#)

**CNN:** [Hawaii's message to tourists: Please don't come here right now](#)

## State of Hawaii Hotel Performance by Week - 2020 vs 2019

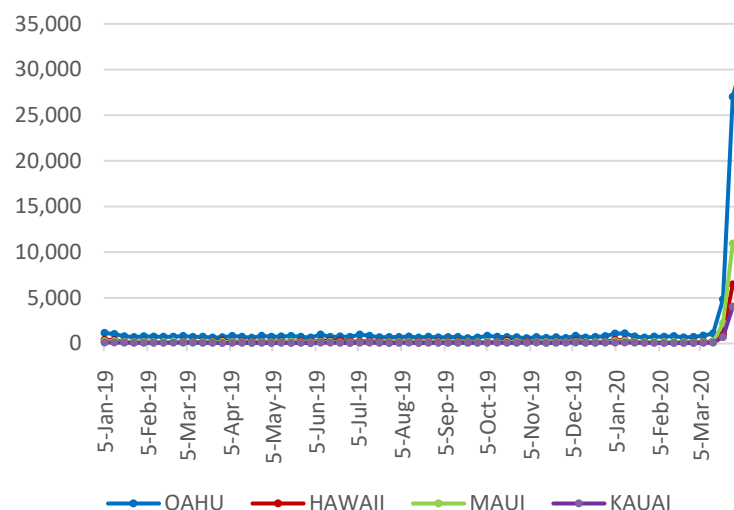


## Hawaii Hotel Performance Info:

For the week of March 29 – April 4, 2020

	Occupancy	ADR	RevPAR
<b>State of Hawaii</b>	6.8%	\$ 162.59	\$ 10.99
<b>Oahu</b>	7.0%	\$ 153.61	\$ 10.83
<b>Maui County</b>	6.9%	\$ 186.09	\$ 12.92
<b>Kauai County</b>	5.4%	\$ 198.37	\$ 10.70
<b>Island of Hawaii</b>	6.0%	\$ 138.24	\$ 8.36

## 2020 Initial Weekly Unemployment Claims by Island



## Weekly Unemployment Initial Claims: April 4, 2020

<b>State of Hawaii</b>	53,111
<b>C&amp;C of Oahu</b>	30,958
<b>Maui County</b>	10,394
<b>Hawaii County</b>	7,063
<b>Kauai County</b>	4,476
<b>Agent (fled in Hawaii against another state)</b>	220

## Helpful Resources

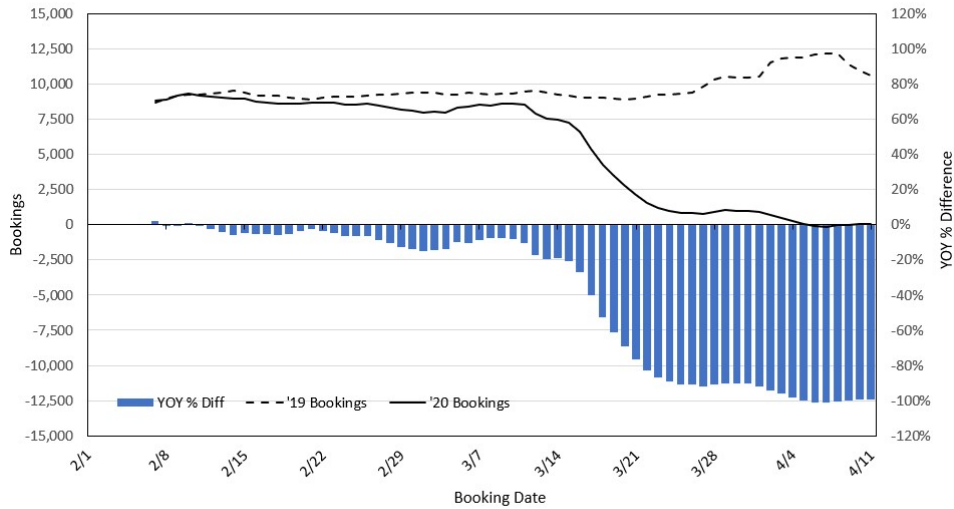
**Department of Health**  
<https://hawaiicovid19.com/>

**Department of Health**  
<https://health.hawaii.gov/docd/advisories/novel-coronavirus-2019>

**Dept. of Business, Economic Development & Tourism**  
<https://dbedt.hawaii.gov/economic/covid19/>

**Department of Transportation**  
<https://hidot.hawaii.gov/coronavirus/>

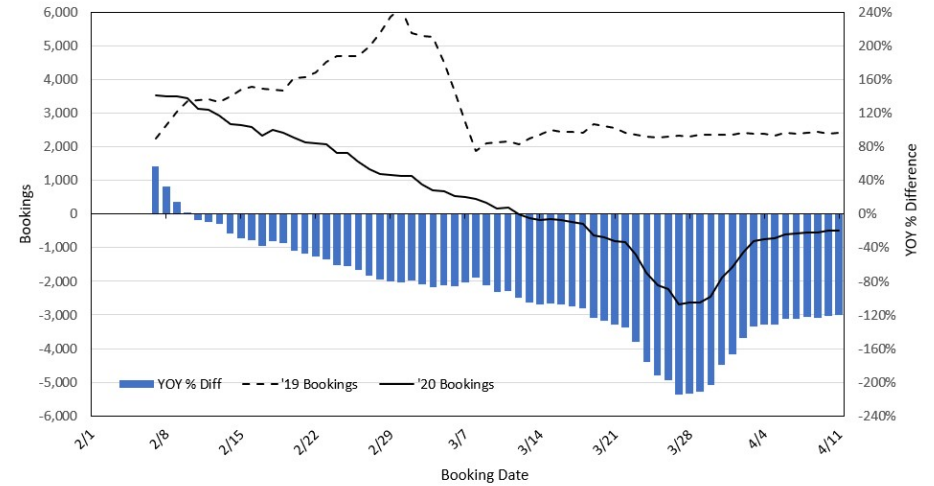
### Travel Agency Bookings to Hawaii for Future Arrivals\* Based on a 7-day Moving Average, 2020 vs 2019 U.S.



\*Future Arrivals refers to all arrivals that are 'future' relative to the referenced booking date.  
Source: Global Agency Pro

Update: Apr 11, 2020

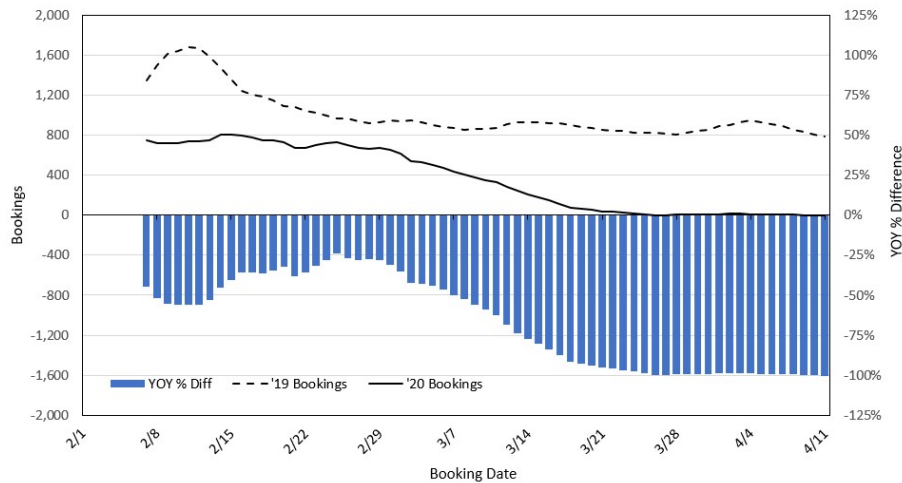
### Travel Agency Bookings to Hawaii for Future Arrivals\* Based on a 7-day Moving Average, 2020 vs 2019 Japan



\*Future Arrivals refers to all arrivals that are 'future' relative to the referenced booking date.  
Source: Global Agency Pro

Update: Apr 11, 2020

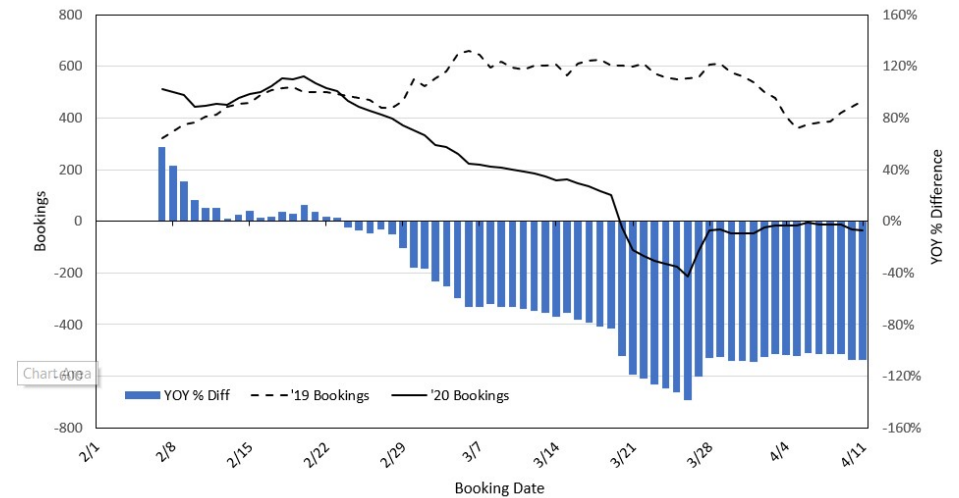
### Travel Agency Bookings to Hawaii for Future Arrivals\* Based on a 7-day Moving Average, 2020 vs 2019 Canada



\*Future Arrivals refers to all arrivals that are 'future' relative to the referenced booking date.  
Source: Global Agency Pro

Update: Apr 11, 2020

### Travel Agency Bookings to Hawaii for Future Arrivals\* Based on a 7-day Moving Average, 2020 vs 2019 Australia



\*Future Arrivals refers to all arrivals that are 'future' relative to the referenced booking date.  
Source: Global Agency Pro

Update: Apr 11, 2020