

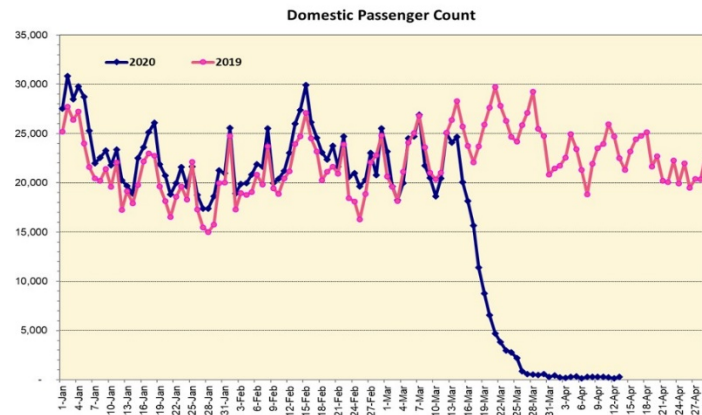
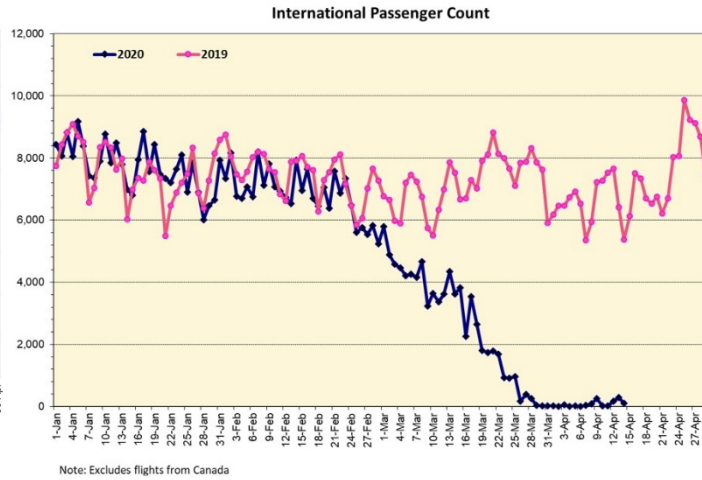
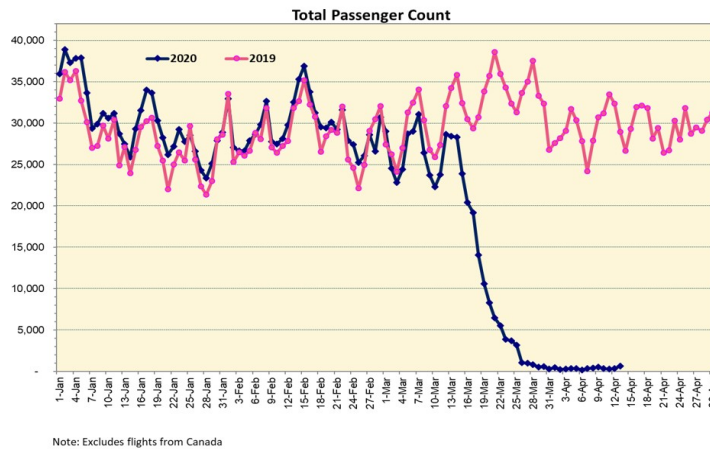
HTA COVID-19 UPDATE

(Issued: 4/14/20 @ 4:00pm)

Novel Coronavirus in Hawaii

COVID-19 Positive* Cases

Cumulative totals as of 12:00 noon on April 14, 2020



Daily Passenger Count Table

04/13/2020	Domestic	International	Total
Oahu	280	291	571
Maui	24		24
Island of Hawaii	0		0
Kauai	14		14
State	318	291	609

4/14/20 Hawaii Passenger Arrivals by Air Update

Yesterday, 691 people arrived in Hawaii including 164 visitors and 205 residents. Mandatory 14-day, self-quarantine is required for all passengers arriving from out of state and also covers interisland travelers. This table shows the number of people who arrived by air from out of state yesterday and does not include interisland travel.

	Kona	Maui	Oahu	Lihue	Total
Crew		6	136	2	144
Intended New Resident			48		48
Resident		19	178	8	205
Transit			130		130
Visitor		5	153	6	164
Grand Total	0	30	645	16	691
Flights	0	1	13	1	15

Statewide	Total
Total Cases	517 (13 new)
Released from Isolation†	333
Required Hospitalization	45
Deaths	9
BY COUNTY	Total
Hawaii County	
Total Cases	41
Released from Isolation†	29
Required Hospitalization	0
Deaths	0
Honolulu County	
Total Cases	358
Released from Isolation†	249
Required Hospitalization	37
Deaths	6
Kauai County	
Total Cases	21
Released from Isolation†	14
Required Hospitalization	1
Deaths	0
Maui County	
Total Cases	88
Released from Isolation†	41
Required Hospitalization	7
Deaths	3
HI Residents diagnosed outside of HI	6
County Pending	3

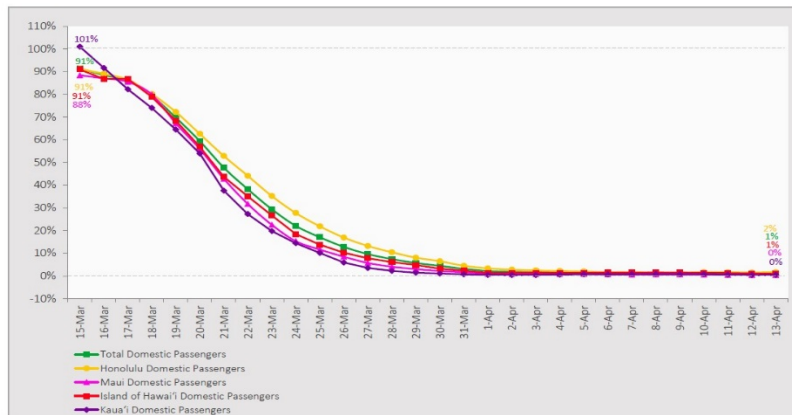
*includes presumptive and confirmed cases, data are preliminary and subject to change; note that CDC provides case counts according to states of residence.

†Isolation should be maintained until at least 3 days (72 hours) after resolution of fever and myalgia without the use of antipyretics OR at least 7 days have passed since symptom onset, whichever is longer.

Market Impact Update: <https://www.dropbox.com/4/14/2020 HTA COVID19 Update>

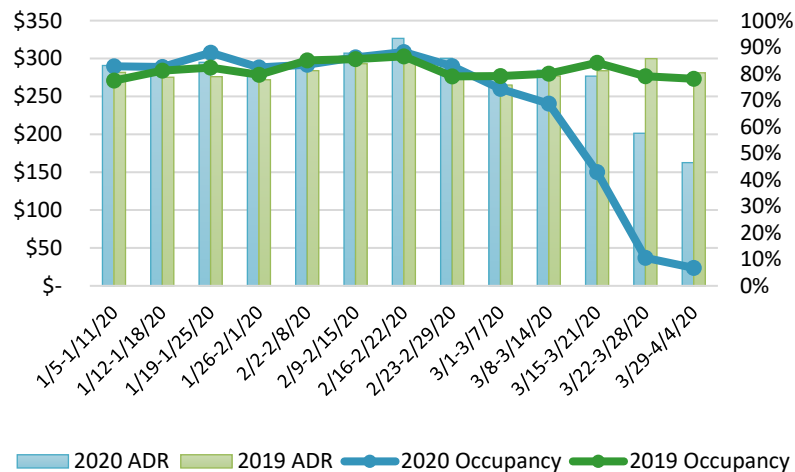
7-Day Domestic by Island Moving Average Daily Passenger Volume

2020 Volume as Percentage of 2019 Volume
Through April 13, 2020



Source: HVCB analysis based on data from DBEDT
Note: Passenger volume figures include both visitors and residents.

State of Hawaii Hotel Performance by Week - 2020 vs 2019



Source: STR, Inc. © Copyright 2020 Hawai'i Tourism Authority

Hawaii Hotel Performance Info:

For the week of March 29 – April 4, 2020

	Occupancy	ADR	RevPAR
State of Hawaii	6.8%	\$ 162.59	\$ 10.99
Oahu	7.0%	\$ 153.61	\$ 10.83
Maui County	6.9%	\$ 186.09	\$ 12.92
Kauai County	5.4%	\$ 198.37	\$ 10.70
Island of Hawaii	6.0%	\$ 138.24	\$ 8.36

Domestic by Island Month-to-Date and Year-to-Date Daily Passenger Volume

2020 Volume versus 2019 Volume
Through April 13, 2020

April 2020 (Month-to-Date through April 13)

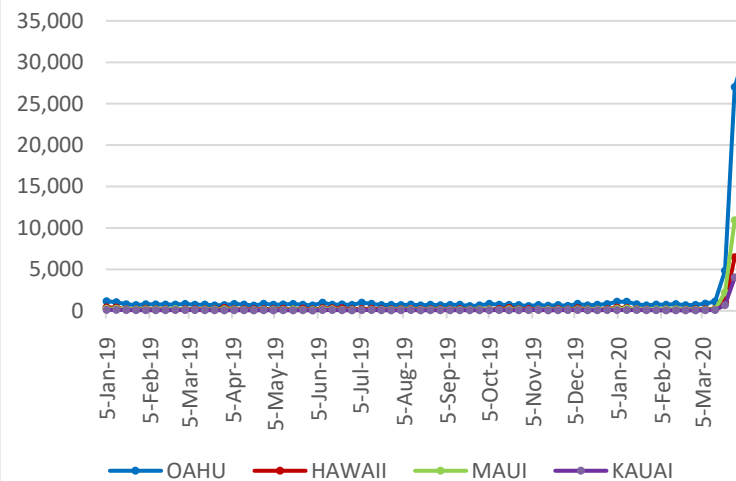
	2020	2019	Volume Change	Percent Change
Honolulu	2,686	156,511	-153,825	-98.3%
Maui County	379	79,189	-78,810	-99.5%
Island of Hawai'i	376	34,887	-34,511	-98.9%
Kaua'i	145	24,553	-24,408	-99.4%
Total	3,586	295,140	-291,554	-98.8%

2020 (Year-to-Date through April 13)

	2020	2019	Volume Change	Percent Change
Honolulu	966,586	1,227,534	-260,948	-21.3%
Maui County	441,221	566,813	-125,592	-22.2%
Island of Hawai'i	216,484	284,385	-67,901	-23.9%
Kaua'i	148,749	201,970	-53,221	-26.4%
Total	1,773,040	2,280,702	-507,662	-22.3%

Source: HVCB analysis based on data from DBEDT
Note: Passenger volume figures include both visitors and residents. Total includes other international passengers. 2020 includes one additional day due to Leap Year (February 29th, 2020).

2020 Initial Weekly Unemployment Claims by Island



Weekly Unemployment Initial Claims: April 4, 2020

State of Hawaii	53,111
C&C of Oahu	30,958
Maui County	10,394
Hawaii County	7,063
Kauai County	4,476
Agent (fled in Hawaii against another state)	220

News Highlights

April 14, 2020

Hawaii News Now: [Hawaii sees just 5 new COVID-19 cases as talks about how to lift stay-at-home order begin](#)

Hawaii Tribune-Herald: [Senators wonder why Ige hasn't asked Trump to ban nonessential travelers](#)

Skift: [Hawaii Looks to Restrict Lodging Reservations to Prevent Visitor Arrivals](#)

Honolulu Star-Advertiser: [Hotel for Heroes tweaks program as demand grows](#)

Big Island Now: [Hara Says Plan to Limit Visitor Lodging Options Under Discussion](#)

Honolulu Star-Advertiser: [Editorial: Adhere strictly to travel quarantine](#)

Hawaii Tribune-Herald: [Your Views for April 14](#)

USA Today: [Hawaii explores deterring tourists by limiting hotel reservations amid coronavirus pandemic](#)

Helpful Resources

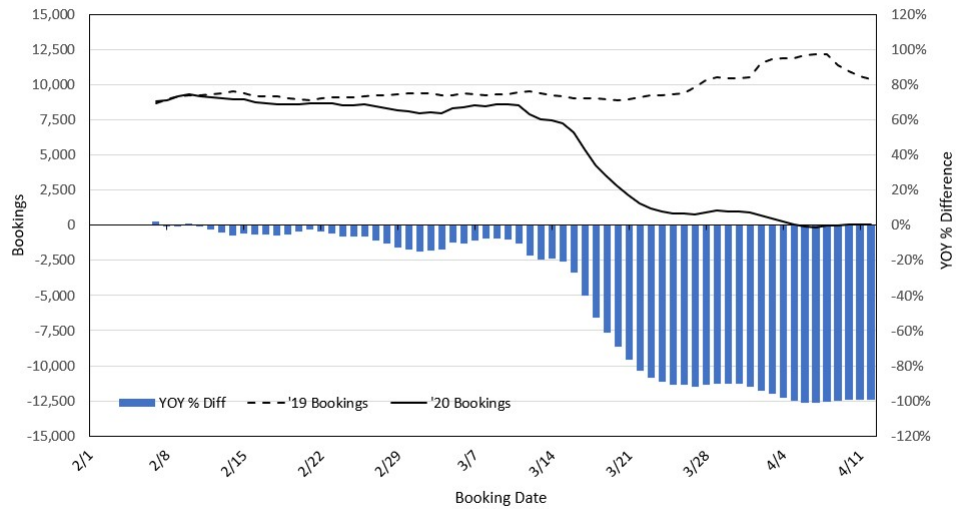
Department of Health
<https://hawaiiocovid19.com/>

Department of Health
<https://health.hawaii.gov/docd/advisories/novel-coronavirus-2019>

Dept. of Business, Economic Development & Tourism
<https://dbedt.hawaii.gov/economic/covid19/>

Department of Transportation
<https://hidot.hawaii.gov/coronavirus/>

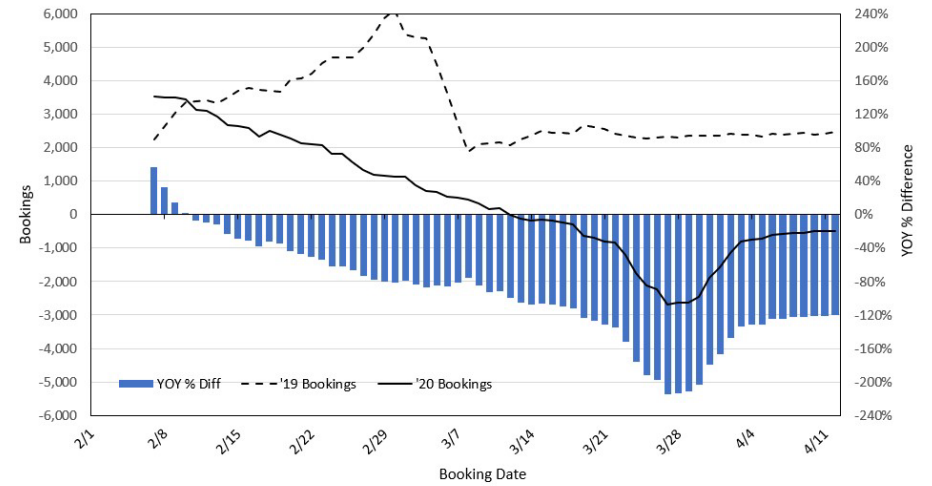
Travel Agency Bookings to Hawaii for Future Arrivals* Based on a 7-day Moving Average, 2020 vs 2019 U.S.



*Future Arrivals refers to all arrivals that are 'future' relative to the referenced booking date.
Source: Global Agency Pro

Update: Apr 12, 2020

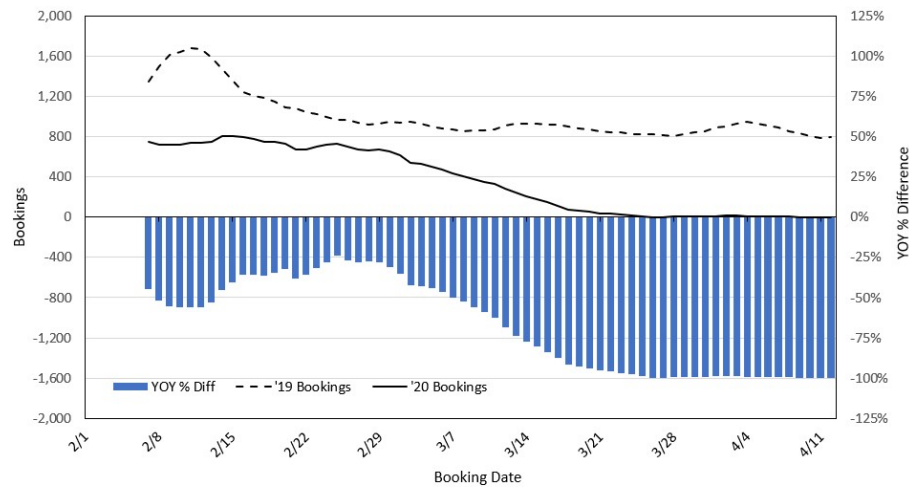
Travel Agency Bookings to Hawaii for Future Arrivals* Based on a 7-day Moving Average, 2020 vs 2019 Japan



*Future Arrivals refers to all arrivals that are 'future' relative to the referenced booking date.
Source: Global Agency Pro

Update: Apr 12, 2020

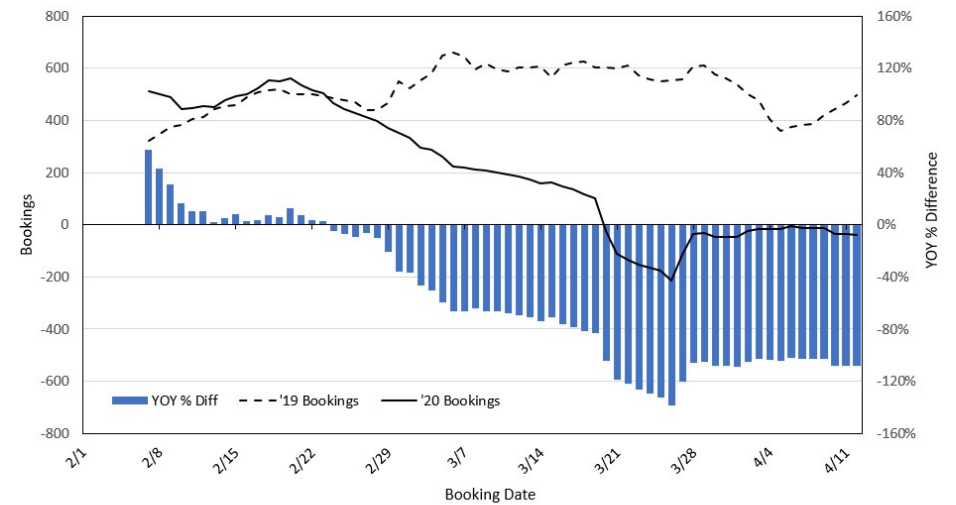
Travel Agency Bookings to Hawaii for Future Arrivals* Based on a 7-day Moving Average, 2020 vs 2019 Canada



*Future Arrivals refers to all arrivals that are 'future' relative to the referenced booking date.
Source: Global Agency Pro

Update: Apr 12, 2020

Travel Agency Bookings to Hawaii for Future Arrivals* Based on a 7-day Moving Average, 2020 vs 2019 Australia



*Future Arrivals refers to all arrivals that are 'future' relative to the referenced booking date.
Source: Global Agency Pro

Update: Apr 12, 2020