

# HTA COVID-19 UPDATE

(Issued: 4/15/20 @ 4:00pm)

## Novel Coronavirus in Hawaii

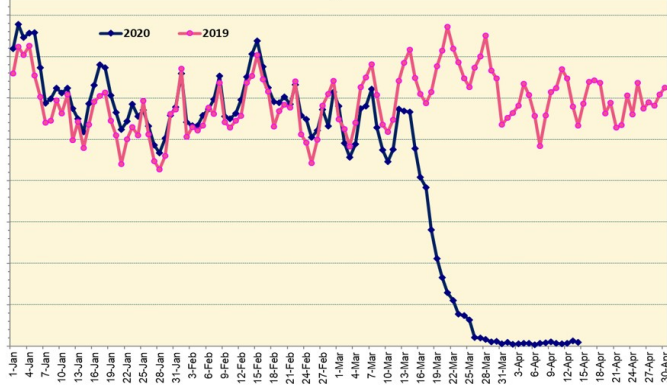
COVID-19 Positive\* Cases

Cumulative totals as of 12:00 noon on April 15, 2020

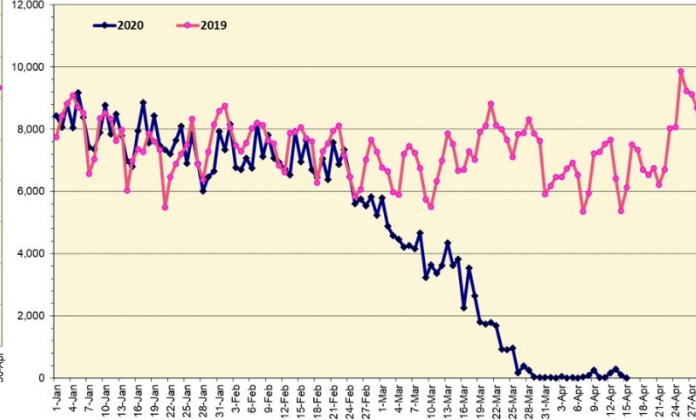
Total Passenger Count

International Passenger Count

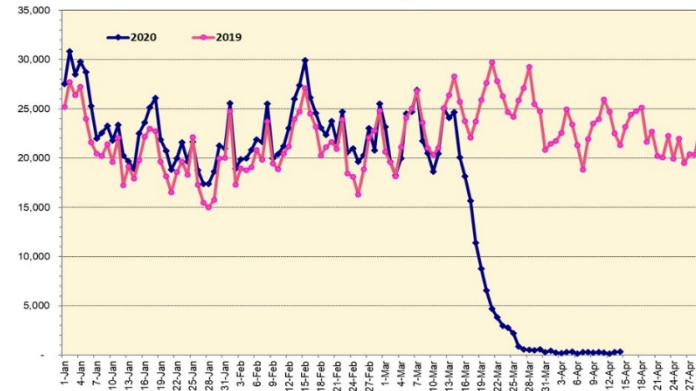
Domestic Passenger Count



Note: Excludes flights from Canada



Note: Excludes flights from Canada



### Daily Passenger Count Table

| 04/14/2020       | Domestic | International | Total |
|------------------|----------|---------------|-------|
| Oahu             | 297      | 99            | 396   |
| Maui             | 14       |               | 14    |
| Island of Hawaii | 28       |               | 28    |
| Kauai            | 0        |               | 0     |
| State            | 339      | 99            | 438   |

### 4/15/20 Hawaii Passenger Arrivals by Air Update

Yesterday, 512 people arrived in Hawaii including 119 visitors and 174 residents. Mandatory 14-day, self-quarantine is required for all passengers arriving from out of state and also covers interisland travelers. This table shows the number of people who arrived by air from out of state yesterday and does not include interisland travel.

|                       | Kona      | Maui      | Oahu       | Lihue    | Total      |
|-----------------------|-----------|-----------|------------|----------|------------|
| Crew                  | 6         | 6         | 124        |          | 136        |
| Intended New Resident | 6         |           | 43         |          | 49         |
| Resident              | 10        | 8         | 156        |          | 174        |
| Transit               |           |           | 34         |          | 34         |
| Visitor               | 12        | 6         | 101        |          | 119        |
| <b>Grand Total</b>    | <b>34</b> | <b>20</b> | <b>458</b> | <b>0</b> | <b>512</b> |
| Flights               | 1         | 1         | 13         | 0        | 15         |

Market Impact Update: <https://www.dropbox.com/4/15/2020 HTA COVID19 Update>

| Statewide   | Total        |
|-------------|--------------|
| Total Cases | 530 (13 new) |

Released from Isolation† 359

Required Hospitalization 45

Deaths 9

| BY COUNTY | Total |
|-----------|-------|
|-----------|-------|

#### Hawaii County

Total Cases 41

Released from Isolation† 30

Required Hospitalization 0

Deaths 0

#### Honolulu County

Total Cases 369

Released from Isolation† 271

Required Hospitalization 37

Deaths 6

#### Kauai County

Total Cases 21

Released from Isolation† 16

Required Hospitalization 1

Deaths 0

#### Maui County

Total Cases 92

Released from Isolation† 42

Required Hospitalization 7

Deaths 3

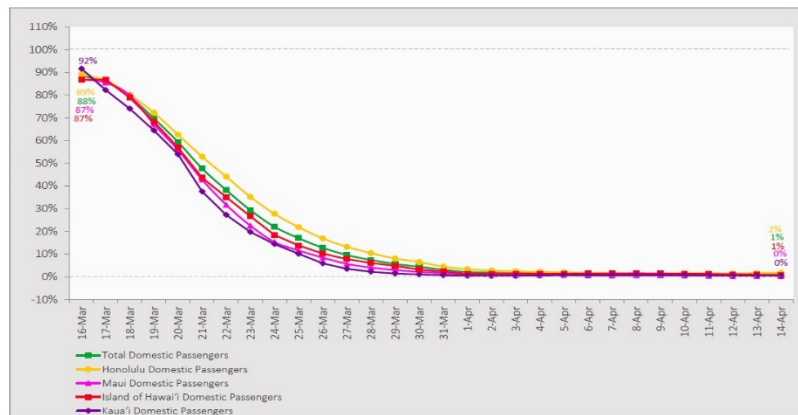
|   |          |
|---|----------|
| <b>HI Residents diagnosed outside of HI</b> | <b>6</b> |
| <b>County Pending</b>                       | <b>1</b> |

\*includes presumptive and confirmed cases, data are preliminary and subject to change; note that CDC provides case counts according to states of residence.

†Isolation should be maintained until at least 3 days (72 hours) after resolution of fever and myalgia without the use of antipyretics OR at least 7 days have passed since symptom onset, whichever is longer.

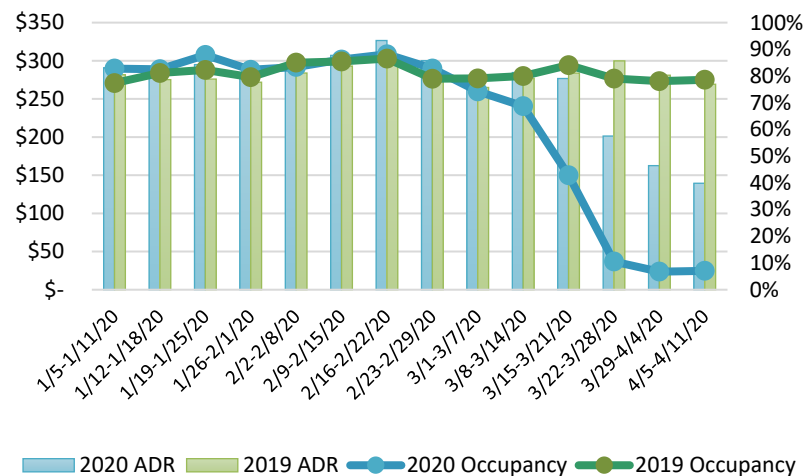
## 7-Day Domestic by Island Moving Average Daily Passenger Volume

2020 Volume as Percentage of 2019 Volume  
Through April 14, 2020



Source: HVCB analysis based on data from DBEDT  
Note: Passenger volume figures include both visitors and residents.

## State of Hawai'i Hotel Performance by Week - 2020 vs 2019



Source: STR, Inc. © Copyright 2020 Hawai'i Tourism Authority

## Hawaii Hotel Performance Info: For the week of April 5 – April 11, 2020

|                  | Occupancy | ADR       | RevPAR   |
|------------------|-----------|-----------|----------|
| State of Hawaii  | 7.1%      | \$ 139.51 | \$ 9.85  |
| Oahu             | 7.1%      | \$ 145.27 | \$ 10.26 |
| Maui County      | 7.2%      | \$ 124.44 | \$ 8.96  |
| Kauai County     | 5.5%      | \$ 167.34 | \$ 9.26  |
| Island of Hawaii | 8.2%      | \$ 120.54 | \$ 9.88  |

## Domestic by Island Month-to-Date and Year-to-Date Daily Passenger Volume

2020 Volume versus 2019 Volume  
Through April 14, 2020

April 2020 (Month-to-Date through April 14)

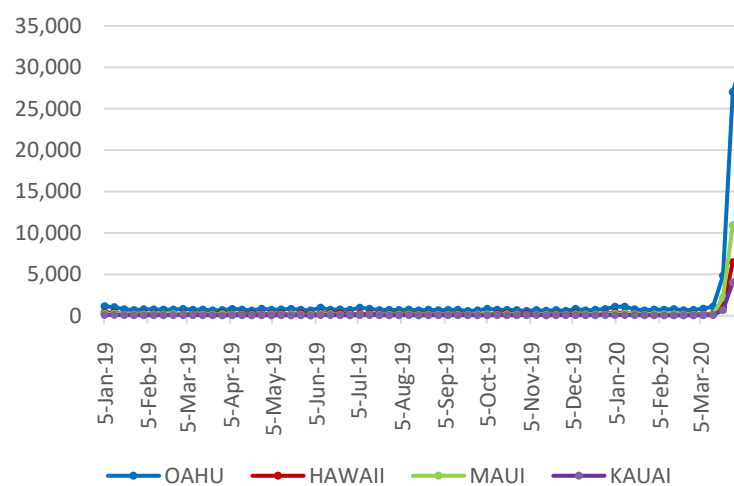
|                   | 2020  | 2019    | Volume Change | Percent Change |
|-------------------|-------|---------|---------------|----------------|
| Honolulu          | 2,936 | 170,028 | -167,092      | -98.3%         |
| Maui County       | 395   | 85,629  | -85,234       | -99.5%         |
| Island of Hawai'i | 404   | 37,701  | -37,297       | -98.9%         |
| Kaua'i            | 145   | 26,500  | -26,355       | -99.5%         |
| Total             | 3,880 | 319,858 | -315,978      | -98.8%         |

2020 (Year-to-Date through April 14)

|                   | 2020      | 2019      | Volume Change | Percent Change |
|-------------------|-----------|-----------|---------------|----------------|
| Honolulu          | 966,836   | 1,241,051 | -274,215      | -22.1%         |
| Maui County       | 441,237   | 573,253   | -132,016      | -23.0%         |
| Island of Hawai'i | 216,512   | 287,199   | -70,687       | -24.6%         |
| Kaua'i            | 148,749   | 203,917   | -55,168       | -27.1%         |
| Total             | 1,773,334 | 2,305,420 | -532,086      | -23.1%         |

Source: HVCB analysis based on data from DBEDT  
Note: Passenger volume figures include both visitors and residents. Total includes other international passengers. 2020 includes one additional day due to Leap Year (February 29th, 2020).

## 2020 Initial Weekly Unemployment Claims by Island



## Weekly Unemployment Initial Claims: April 4, 2020

|  |        |
|--|--------|
| State of Hawaii                              | 53,111 |
| C&C of Oahu                                  | 30,958 |
| Maui County                                  | 10,394 |
| Hawaii County                                | 7,063  |
| Kauai County                                 | 4,476  |
| Agent (fled in Hawaii against another state) | 220    |

## News Highlights

April 15, 2020

**KHON2:** [Mask mandate on Oahu goes into effect April 20th](#)

**KITV4:** [Hawaii airports see highest single day total of visitors since mandatory self-quarantine](#)

**The Garden Island:** [Lihue Airport gets funding](#)

**West Hawaii Today:** [COVID-19 cluster tied to Kona McDonald's: 12 people have tested positive](#)

**Honolulu Star-Advertiser:** [Hawaii's daily visitor count hits highest level since quarantine started](#)

**Pacific Business News:** [State considers new way to discourage travel to Hawaii amid COVID-19](#)

**West Hawaii Today:** [Kona airport to get \\$13M in federal funding](#)

**Hawaii Tribune-Herald:** [Your Views for April 15](#)

**Forbes:** [How To Virtually Travel First-Class To Hawaii – Without The Flight And Jet Lag](#)

## Helpful Resources

Department of Health  
<https://hawaiiocovid19.com/>

Department of Health  
<https://health.hawaii.gov/docd/advisories/novel-coronavirus-2019>

Dept. of Business, Economic Development & Tourism  
<https://dbedt.hawaii.gov/economic/covid19/>

Department of Transportation  
<https://hidot.hawaii.gov/coronavirus/>

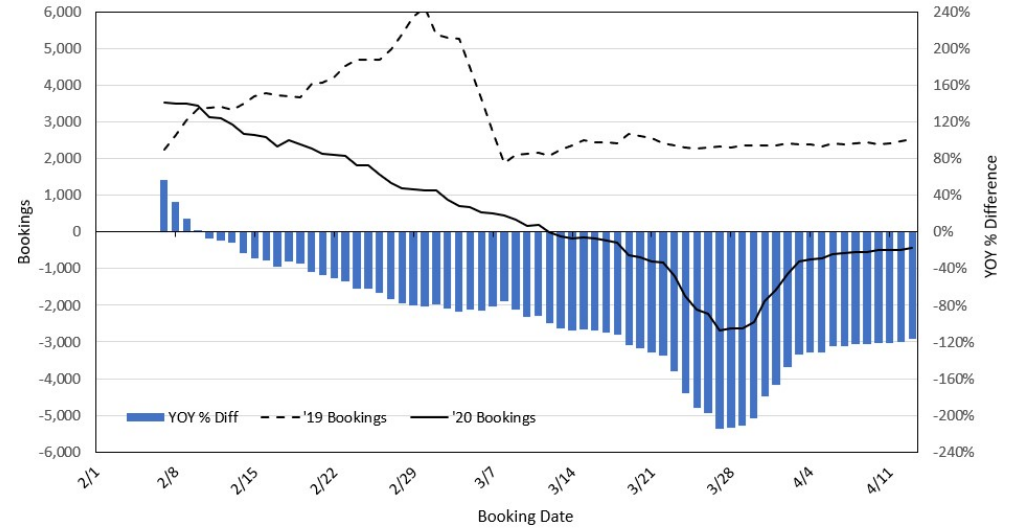
### Travel Agency Bookings to Hawaii for Future Arrivals\* Based on a 7-day Moving Average, 2020 vs 2019 U.S.



\*Future Arrivals refers to all arrivals that are 'future' relative to the referenced booking date.  
Source: Global Agency Pro

Update: Apr 13, 2020

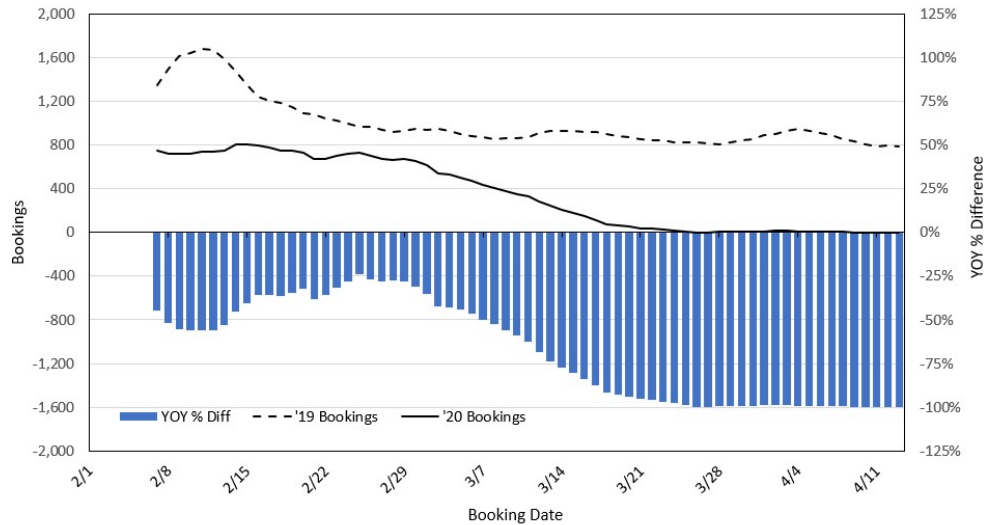
### Travel Agency Bookings to Hawaii for Future Arrivals\* Based on a 7-day Moving Average, 2020 vs 2019 Japan



\*Future Arrivals refers to all arrivals that are 'future' relative to the referenced booking date.  
Source: Global Agency Pro

Update: Apr 13, 2020

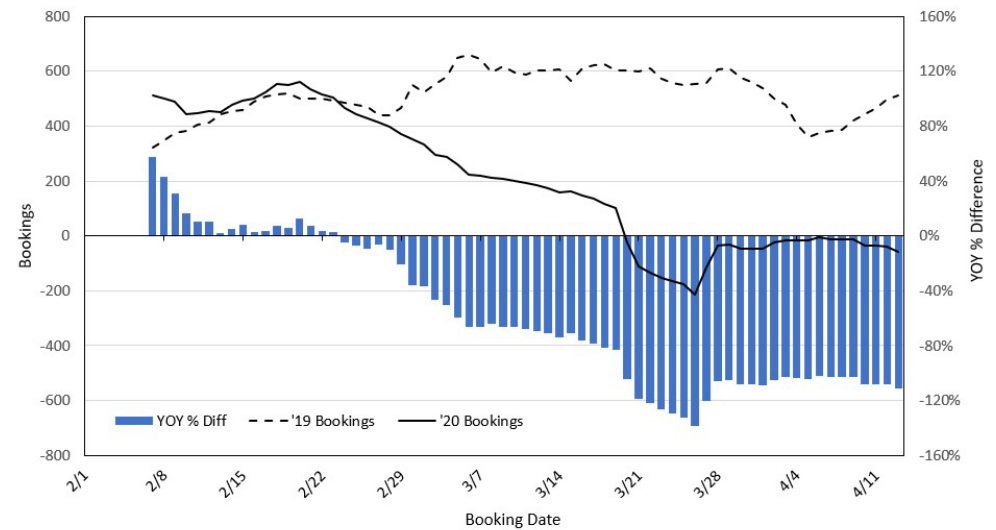
### Travel Agency Bookings to Hawaii for Future Arrivals\* Based on a 7-day Moving Average, 2020 vs 2019 Canada



\*Future Arrivals refers to all arrivals that are 'future' relative to the referenced booking date.  
Source: Global Agency Pro

Update: Apr 13, 2020

### Travel Agency Bookings to Hawaii for Future Arrivals\* Based on a 7-day Moving Average, 2020 vs 2019 Australia



\*Future Arrivals refers to all arrivals that are 'future' relative to the referenced booking date.  
Source: Global Agency Pro

Update: Apr 13, 2020