

# HTA COVID-19 UPDATE

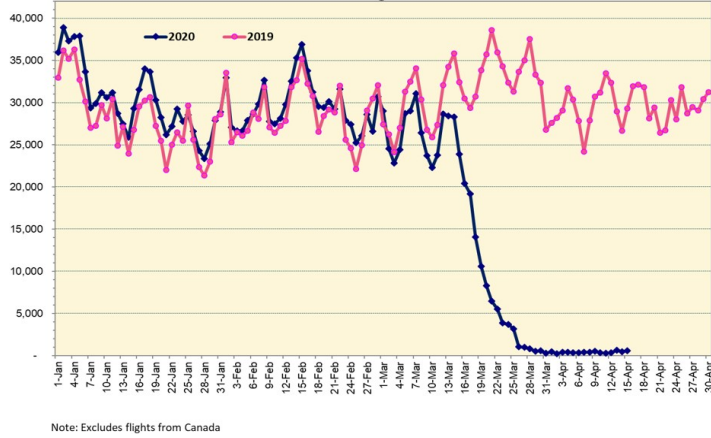
(Issued: 4/16/20 @ 3:30pm)

## Novel Coronavirus in Hawaii

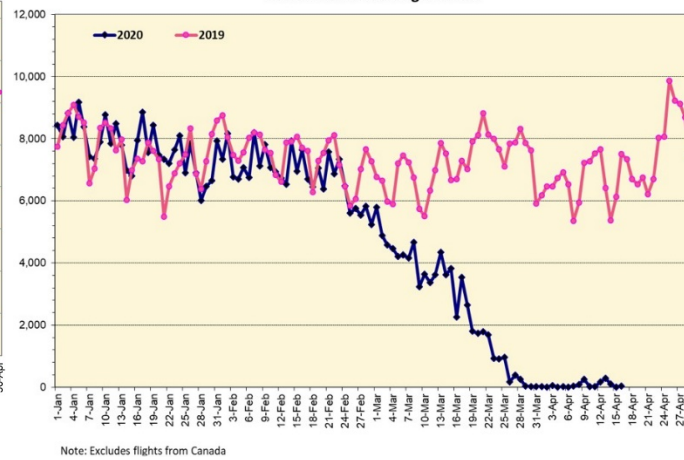
COVID-19 Positive\* Cases

Cumulative totals as of 12:00 noon on April 16, 2020

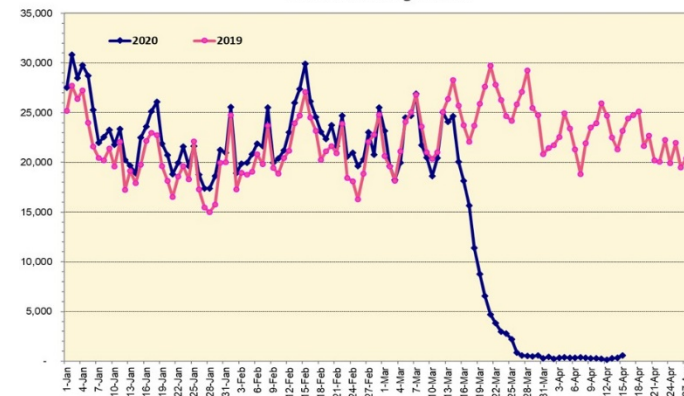
Total Passenger Count



International Passenger Count



Domestic Passenger Count



### Daily Passenger Count Table

04/15/2020	Domestic	International	Total
Oahu	540	3	543
Maui	30		30
Island of Hawaii	0		0
Kauai	24		24
State	594	3	597

### 4/16/20 Hawaii Passenger Arrivals by Air Update

Today marks three weeks since the state's mandatory 14-day self-quarantine started for all passengers arriving in Hawaii from out of state. Yesterday, 764 people arrived in Hawaii including 105 visitors and 480 residents (including 290 Hawaii National Guard members). This table shows the number of people who arrived by air from out of state yesterday and does not include interisland travel.

	Kona	Maui	Oahu	Lihue	Total
Crew		9	85	6	100
Intended New Resident			44	1	45
Resident		23	437	20	480
Transit			34		34
Visitor		7	95	3	105
<b>Grand Total</b>	<b>0</b>	<b>39</b>	<b>695</b>	<b>30</b>	<b>764</b>
Flights	<b>0</b>	<b>1</b>	<b>10</b>	<b>1</b>	<b>12</b>

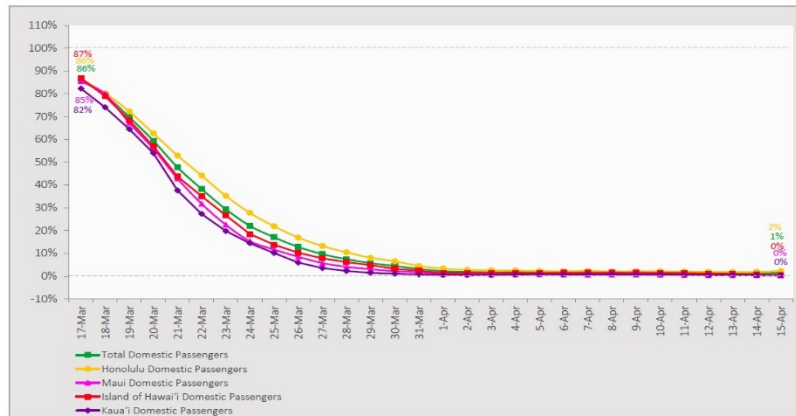
Statewide	Total
Total Cases	541 (11 new)
Released from Isolation†	374
Required Hospitalization	45
Deaths	9
BY COUNTY	Total
Hawaii County	
Total Cases	41
Released from Isolation†	30
Required Hospitalization	0
Deaths	0
Honolulu County	
Total Cases	373
Released from Isolation†	284
Required Hospitalization	37
Deaths	6
Kauai County	
Total Cases	21
Released from Isolation†	16
Required Hospitalization	1
Deaths	0
Maui County	
Total Cases	95
Released from Isolation†	42
Required Hospitalization	7
Deaths	3
<b>HI Residents diagnosed outside of HI</b>	<b>6</b>
<b>County Pending</b>	<b>5</b>

\*includes presumptive and confirmed cases, data are preliminary and subject to change; note that CDC provides case counts according to states of residence.

†Isolation should be maintained until at least 3 days (72 hours) after resolution of fever and myalgia without the use of antipyretics OR at least 7 days have passed since symptom onset, whichever is longer.

## 7-Day Domestic by Island Moving Average Daily Passenger Volume

2020 Volume as Percentage of 2019 Volume  
Through April 15, 2020



Source: HVCB analysis based on data from DBEDT  
Note: Passenger volume figures include both visitors and residents.

## Domestic by Island Month-to-Date and Year-to-Date Daily Passenger Volume

2020 Volume versus 2019 Volume  
Through April 15, 2020

April 2020 (Month-to-Date through April 15)

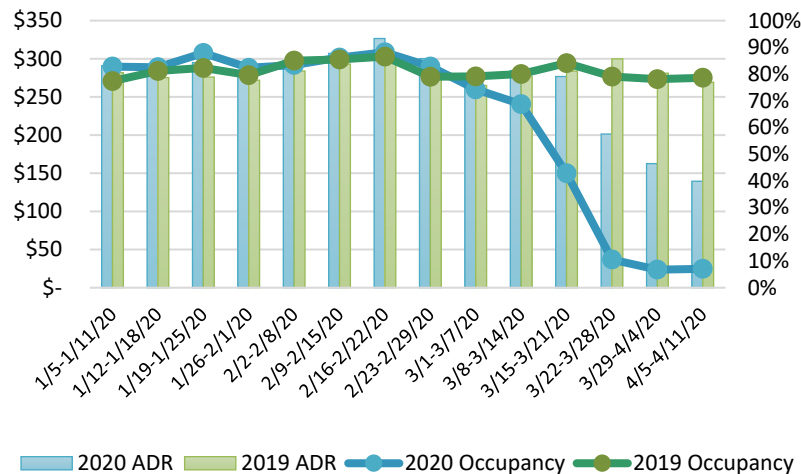
	2020	2019	Volume Change	Percent Change
Honolulu	4,044	182,472	-178,428	-97.8%
Maui County	425	91,388	-90,963	-99.5%
Island of Hawai'i	404	40,325	-39,921	-99.0%
Kaua'i	169	28,189	-28,020	-99.4%
<b>Total</b>	<b>5,042</b>	<b>342,374</b>	<b>-337,332</b>	<b>-98.5%</b>

2020 (Year-to-Date through April 15)

	2020	2019	Volume Change	Percent Change
Honolulu	967,944	1,253,495	-285,551	-22.8%
Maui County	441,267	579,012	-137,745	-23.8%
Island of Hawai'i	216,512	289,823	-73,311	-25.3%
Kaua'i	148,773	205,606	-56,833	-27.6%
<b>Total</b>	<b>1,774,496</b>	<b>2,327,936</b>	<b>-553,440</b>	<b>-23.8%</b>

Source: HVCB analysis based on data from DBEDT  
Note: Passenger volume figures include both visitors and residents. Total includes other international passengers. 2020 includes one additional day due to Leap Year (February 29th, 2020).

## State of Hawai'i Hotel Performance by Week - 2020 vs 2019



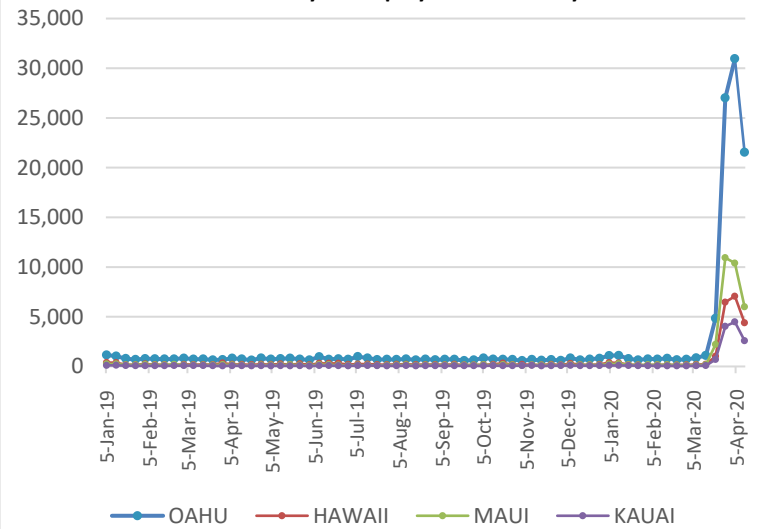
Source: STR, Inc. © Copyright 2020 Hawai'i Tourism Authority

## Hawaii Hotel Performance Info:

For the week of April 5 – April 11, 2020

	Occupancy	ADR	RevPAR
<b>State of Hawaii</b>	7.1%	\$ 139.51	\$ 9.85
<b>Oahu</b>	7.1%	\$ 145.27	\$ 10.26
<b>Maui County</b>	7.2%	\$ 124.44	\$ 8.96
<b>Kauai County</b>	5.5%	\$ 167.34	\$ 9.26
<b>Island of Hawaii</b>	8.2%	\$ 120.54	\$ 9.88

## 2020 Initial Weekly Unemployment Claims by Island



## Weekly Unemployment Initial Claims: April 11, 2020

<b>State of Hawaii</b>	34,723
<b>C&amp;C of Oahu</b>	21,548
<b>Hawaii County</b>	4,384
<b>Maui County</b>	5,996
<b>Kauai County</b>	2,589
<b>Agent (filed in Hawaii against another state)</b>	206

## News Highlights

April 16, 2020

**Honolulu Civil Beat:** [The Coronavirus Has Been Good For Hanauma Bay](#)

**The Garden Island:** [No new cases on Kauai](#)

**Honolulu Star-Advertiser:** [More than 2,600 visitors have come to Hawaii since quarantine began](#)

**Hawaii Tribune-Herald:** [\\$20 million in unemployment benefits paid out so far in April](#)

**West Hawaii Today:** [Hawaii 'Hotels for Heroes' makes changes as demand increases](#)

**Travel Weekly:** [County by county, Hawaii shuts down vacation rentals](#)

**Travel Weekly: Report:** [Hawaii tourism hit hardest of all 50 states](#)

**Only In Your State:** [These Incredible Photos Will Transport You To The Waikiki, Hawaii Of Yesteryear](#)

**USA Today:** [Stunning travel photos that will let you explore the world from your couch](#)

**Skift:** [Coronavirus and Events: Outlook and Recovery Timeline](#)

## Helpful Resources

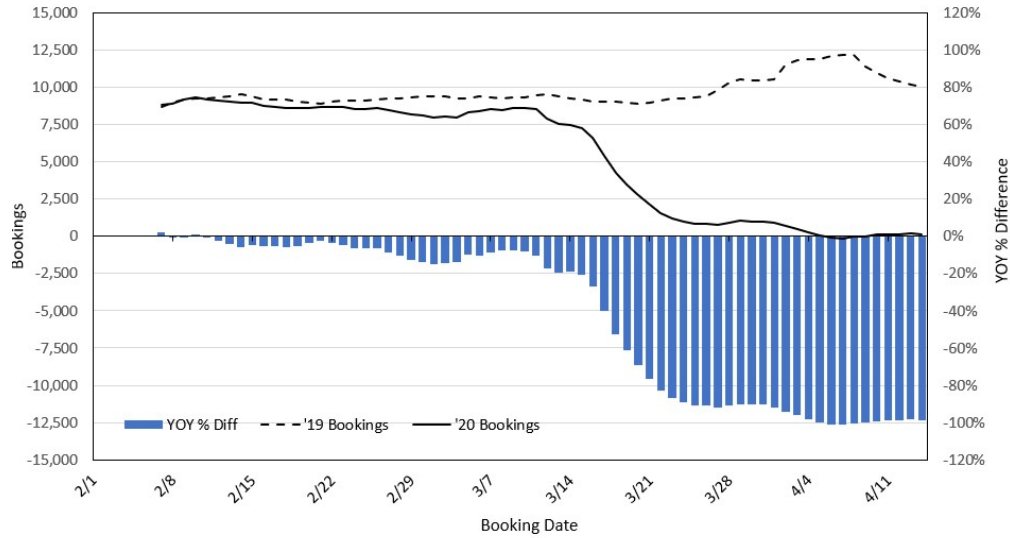
**Department of Health**  
<https://hawaiiocovid19.com/>

**Department of Health**  
<https://health.hawaii.gov/docd/advisories/novel-coronavirus-2019>

**Dept. of Business, Economic Development & Tourism**  
<https://dbedt.hawaii.gov/economic/covid19/>

**Department of Transportation**  
<https://hidot.hawaii.gov/coronavirus/>

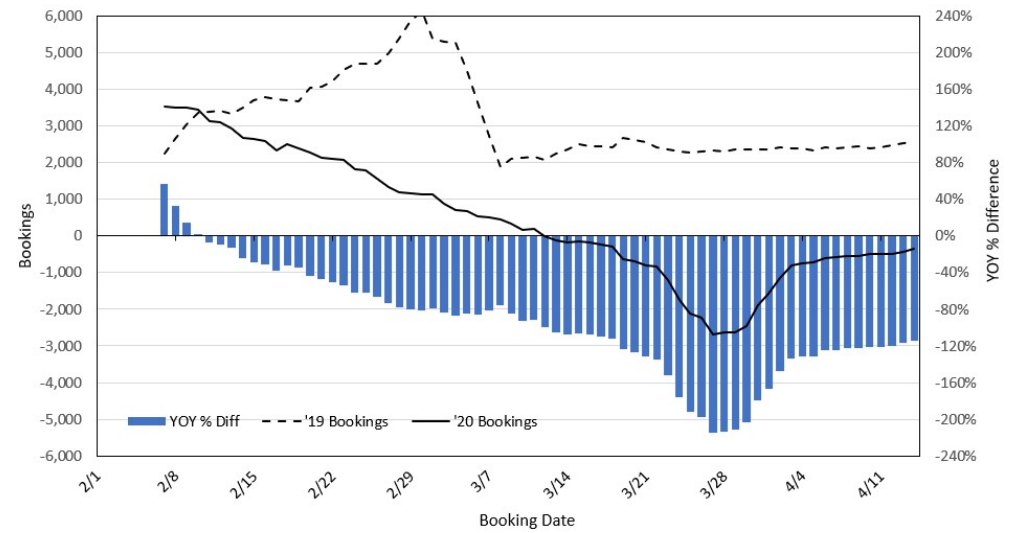
### Travel Agency Bookings to Hawaii for Future Arrivals\* Based on a 7-day Moving Average, 2020 vs 2019 U.S.



\*Future Arrivals refers to all arrivals that are 'future' relative to the referenced booking date.  
Source: Global Agency Pro

Update: Apr 14, 2020

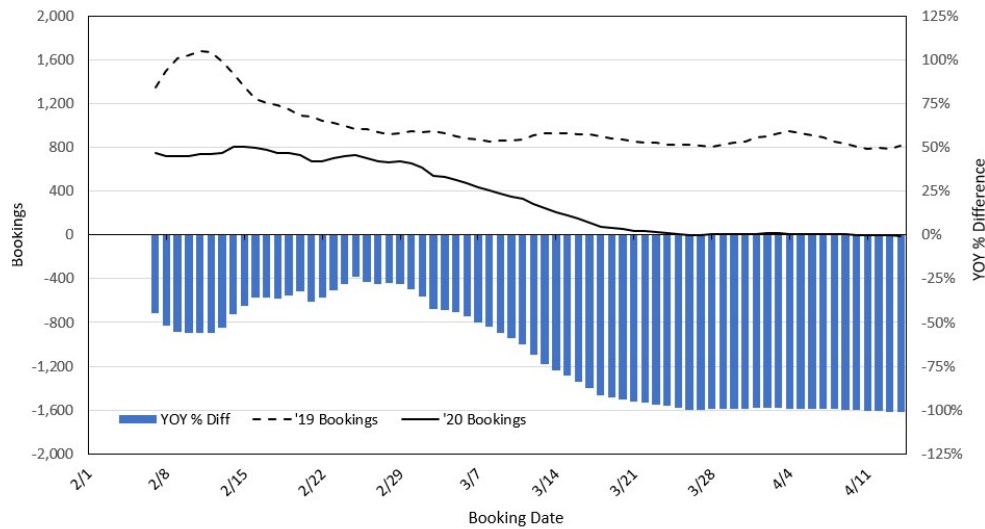
### Travel Agency Bookings to Hawaii for Future Arrivals\* Based on a 7-day Moving Average, 2020 vs 2019 Japan



\*Future Arrivals refers to all arrivals that are 'future' relative to the referenced booking date.  
Source: Global Agency Pro

Update: Apr 14, 2020

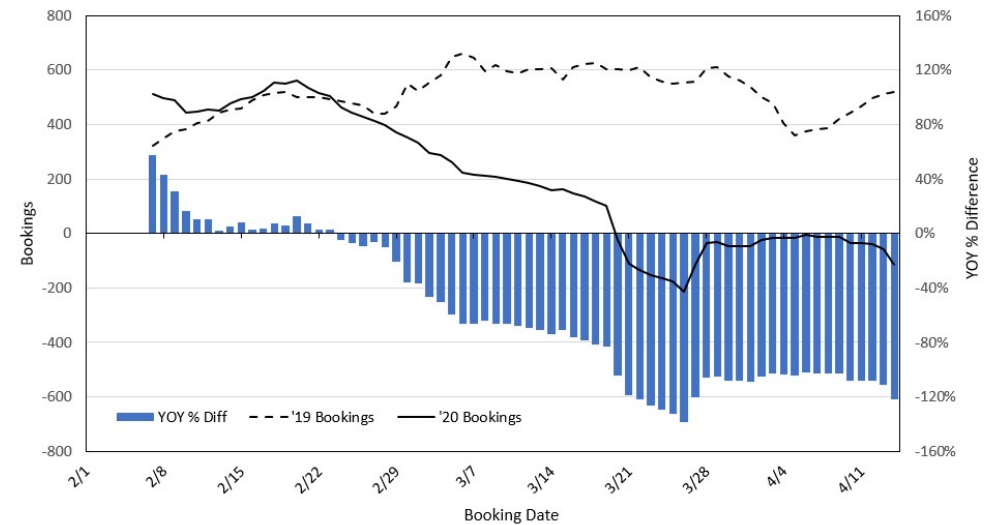
### Travel Agency Bookings to Hawaii for Future Arrivals\* Based on a 7-day Moving Average, 2020 vs 2019 Canada



\*Future Arrivals refers to all arrivals that are 'future' relative to the referenced booking date.  
Source: Global Agency Pro

Update: Apr 14, 2020

### Travel Agency Bookings to Hawaii for Future Arrivals\* Based on a 7-day Moving Average, 2020 vs 2019 Australia



\*Future Arrivals refers to all arrivals that are 'future' relative to the referenced booking date.  
Source: Global Agency Pro

Update: Apr 14, 2020