

HTA COVID-19 UPDATE

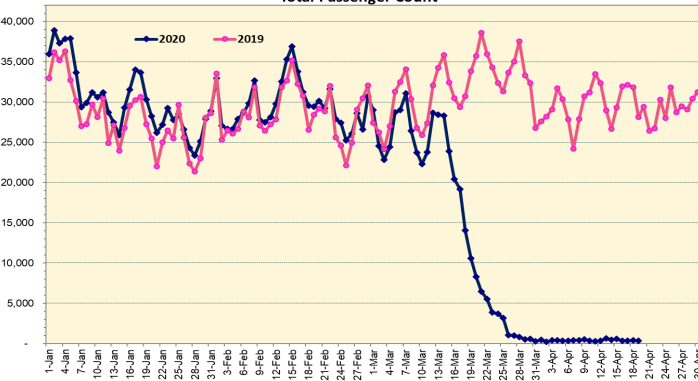
(Issued: 4/20/20 @ 5:00pm)

Novel Coronavirus in Hawaii

COVID-19 Positive* Cases

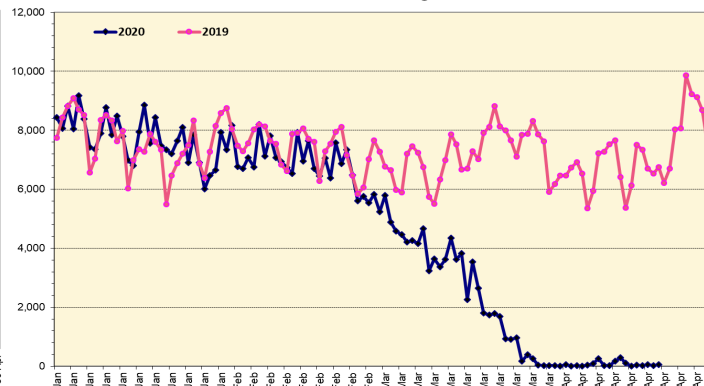
Cumulative totals as of 12:00 noon on April 20, 2020

Total Passenger Count



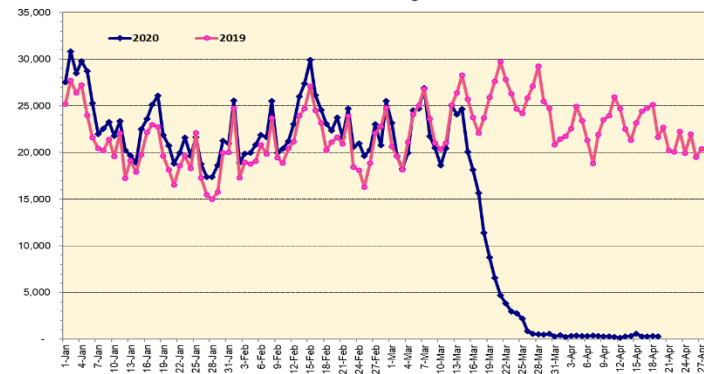
Note: Excludes flights from Canada

International Passenger Count



Note: Excludes flights from Canada

Domestic Passenger Count



Daily Passenger Count Table

04/19/2020	Domestic	International	Total
Oahu	275	25	300
Maui	25		25
Island of Hawaii	11		11
Kauai	0		0
State	311	25	336

4/20/20 Hawaii Passenger Arrivals by Air Update

Yesterday, 441 people arrived in Hawaii including 123 visitors and 184 residents. During this same time last year, nearly 30,000 passengers arrived in Hawaii daily, including residents and visitors. The state's mandatory 14-day self-quarantine started on March 26th for all passengers arriving in Hawaii from out of state. This table shows the number of people who arrived by air from out of state yesterday and does not include interisland travel.

	Kona	Maui	Oahu	Lihue	Total
Crew	2	6	83		91
Intended New Resident			29		29
Resident	9	13	162		184
Transit			14		14
Visitor	2	12	109		123
Grand Total	13	31	397	0	441
Flights	1	1	11	0	13

Market Impact Update: <https://www.dropbox.com/4/20/2020 HTA COVID19 Update>

Statewide	Total
Total Cases	584 (4 new)
Released from Isolation†	423
Required Hospitalization	55
Deaths	10
BY COUNTY	Total
Hawaii County	
Total Cases	64
Released from Isolation†	38
Required Hospitalization	0
Deaths	0
Honolulu County	
Total Cases	385
Released from Isolation†	312
Required Hospitalization	47
Deaths	6
Kauai County	
Total Cases	21
Released from Isolation†	16
Required Hospitalization	1
Deaths	0
Maui County	
Total Cases	108
Released from Isolation†	57
Required Hospitalization	7
Deaths	4
HI Residents diagnosed outside of HI	6
County Pending	0

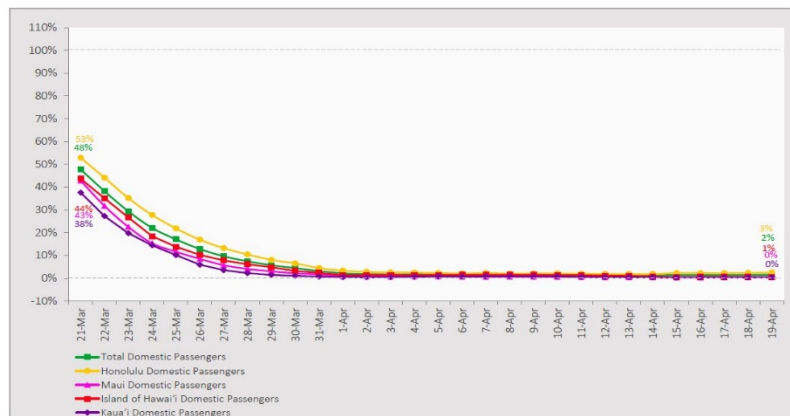
*includes presumptive and confirmed cases, data are preliminary and subject to change; note that CDC provides case counts according to states of residence.

†Isolation should be maintained until at least 3 days (72 hours) after resolution of fever and myalgia without the use of antipyretics OR at least 7 days have passed since symptom onset, whichever is longer.

7-Day Domestic by Island Moving Average Daily Passenger Volume

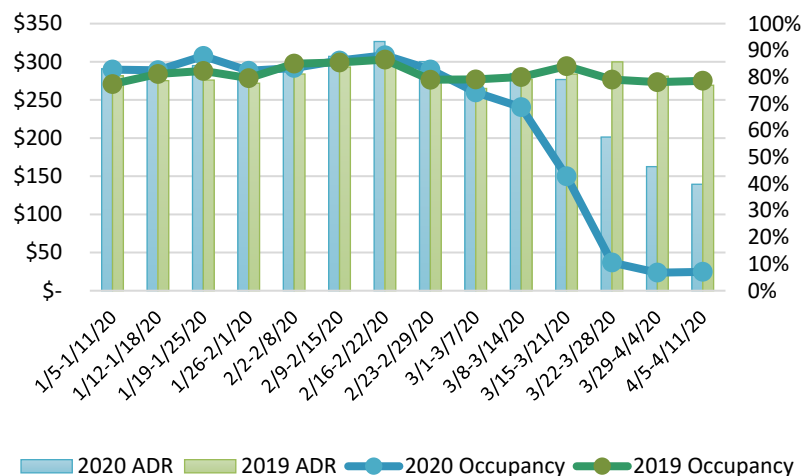
2020 Volume as Percentage of 2019 Volume

Through April 19, 2020



Source: HVCB analysis based on data from DBEDT
Note: Passenger volume figures include both visitors and residents.

State of Hawai'i Hotel Performance by Week - 2020 vs 2019



Source: STR, Inc. © Copyright 2020 Hawai'i Tourism Authority

Hawaii Hotel Performance Info:

For the week of April 5 – April 11, 2020

	Occupancy	ADR	RevPAR
State of Hawaii	7.1%	\$ 139.51	\$ 9.85
Oahu	7.1%	\$ 145.27	\$ 10.26
Maui County	7.2%	\$ 124.44	\$ 8.96
Kauai County	5.5%	\$ 167.34	\$ 9.26
Island of Hawaii	8.2%	\$ 120.54	\$ 9.88

Helpful Resources

Department of Health
<https://hawaiiocovid19.com/>

Department of Health

<https://health.hawaii.gov/dacd/advisories/novel-coronavirus-2019>

Domestic by Island Month-to-Date and Year-to-Date Daily Passenger Volume

2020 Volume versus 2019 Volume

Through April 19, 2020

April 2020 (Month-to-Date through April 19)

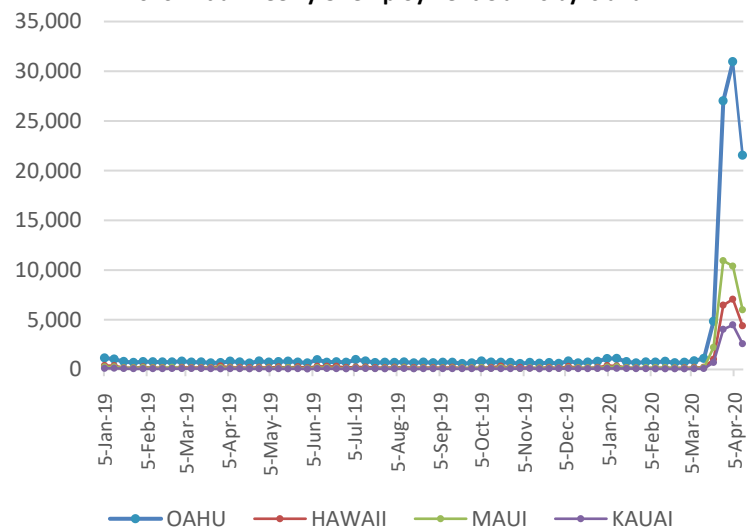
	2020	2019	Volume Change	Percent Change
Honolulu	5,122	232,448	-227,326	-97.8%
Maui County	507	116,952	-116,445	-99.6%
Island of Hawai'i	469	50,586	-50,117	-99.1%
Kaua'i	186	36,074	-35,888	-99.5%
Total	6,284	436,060	-429,776	-98.6%

2020 (Year-to-Date through April 19)

	2020	2019	Volume Change	Percent Change
Honolulu	969,022	1,303,471	-334,449	-25.7%
Maui County	441,349	604,576	-163,227	-27.0%
Island of Hawai'i	216,577	300,084	-83,507	-27.8%
Kaua'i	148,790	213,491	-64,701	-30.3%
Total	1,775,738	2,421,622	-645,884	-26.7%

Source: HVCB analysis based on data from DBEDT
Note: Passenger volume figures include both visitors and residents. Total includes other international passengers. 2020 includes one additional day due to Leap Year (February 29th, 2020).

2020 Initial Weekly Unemployment Claims by Island



Weekly Unemployment Initial Claims: April 11, 2020

State of Hawaii	34,723
C&C of Oahu	21,548
Hawaii County	4,384
Maui County	5,996
Kauai County	2,589
Agent (filed in Hawaii against another state)	206

News Highlights

April 20, 2020

Honolulu Civil Beat: [Here's What Oahu Looks Like Without Tourists](#)

Honolulu Star-Advertiser: [Hawaii tourism, airport officials tighten scrutiny of travelers during coronavirus quarantine orders](#)

Honolulu Star-Advertiser: [Tourists using transient rentals to bypass Hawaii quarantine restrictions prove hard to track](#)

Hawaii Tribune-Herald: [Bright side to outbreak: Arrests are down 33%](#)

Honolulu Star-Advertiser: [Letters: Beware of COVID-19 'new normal'; Restart Hawaii's economy with stay-cations; Schools should grow food for future](#)

The Garden Island: [Experts optimistic about Kauai supplies](#)

West Hawaii Today: [Third McDonald's location closes due to virus; number of cases associated with fast-food eateries hits 30](#)

The Guardian: ['It's beyond frustrating': tensions peak as Hawaii locals urge tourists to stay out](#)

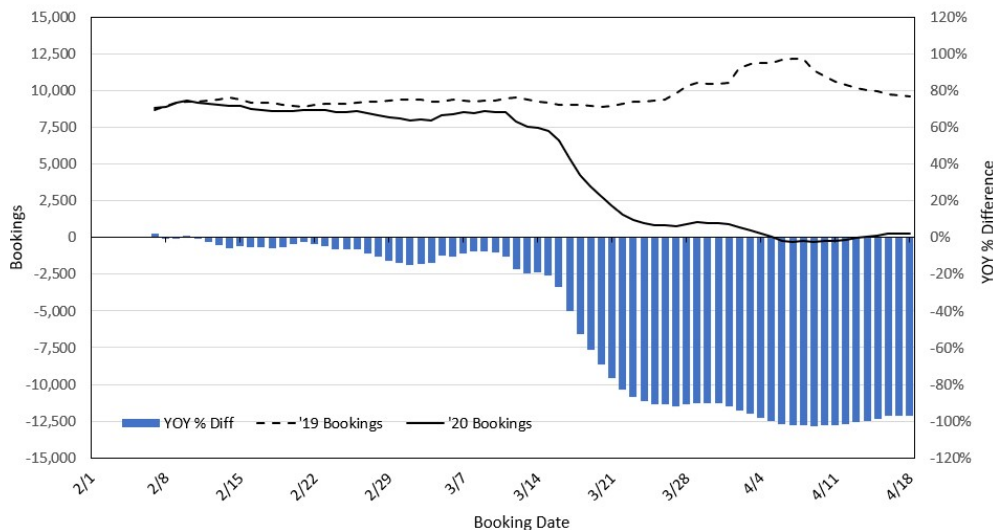
Nerd Wallet: [These Hotel Brands Are Helping First Responders During the COVID-19 Crisis](#)

Forbes: [Here's What Happens If You Travel To Hawaii Right Now During The COVID-19 Lockdown](#)

Dept. of Business, Economic Development & Tourism
<https://dbedt.hawaii.gov/economic/covid19/>

Department of Transportation
<https://hidot.hawaii.gov/coronavirus/>

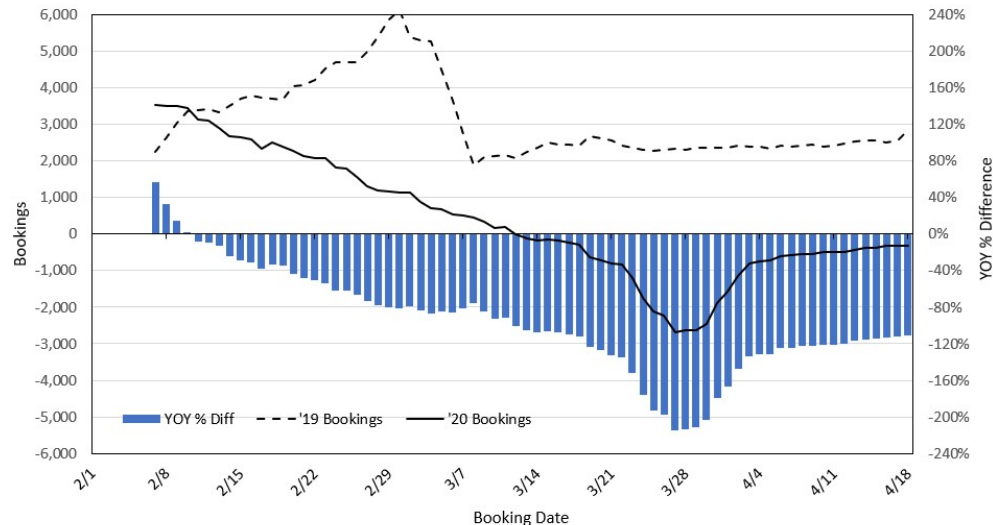
Travel Agency Bookings to Hawaii for Future Arrivals* Based on a 7-day Moving Average, 2020 vs 2019 U.S.



*Future Arrivals refers to all arrivals that are 'future' relative to the referenced booking date.
Source: Global Agency Pro

Update: Apr 18, 2020

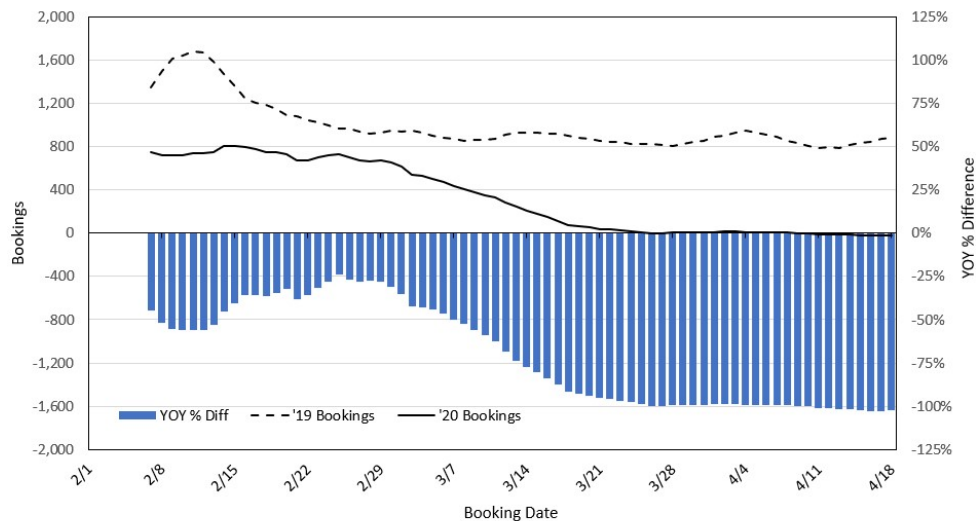
Travel Agency Bookings to Hawaii for Future Arrivals* Based on a 7-day Moving Average, 2020 vs 2019 Japan



*Future Arrivals refers to all arrivals that are 'future' relative to the referenced booking date.
Source: Global Agency Pro

Update: Apr 18, 2020

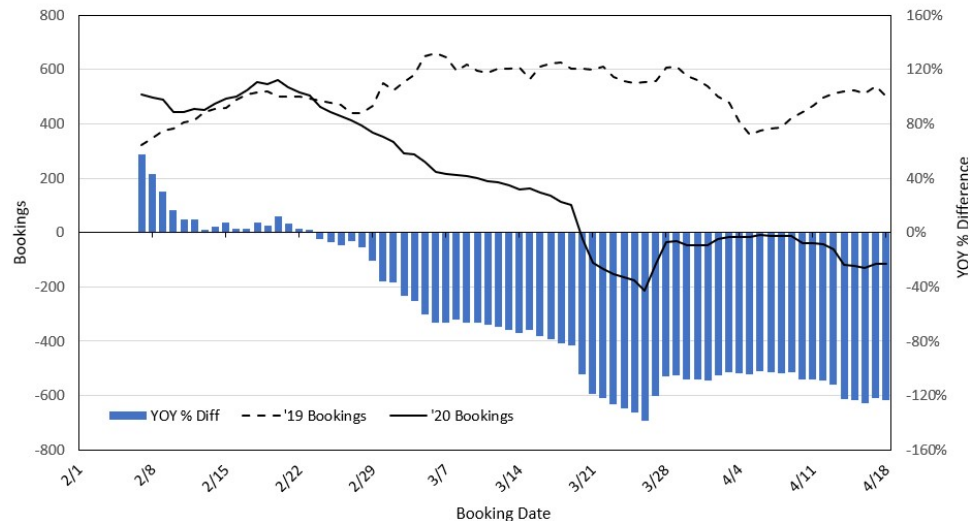
Travel Agency Bookings to Hawaii for Future Arrivals* Based on a 7-day Moving Average, 2020 vs 2019 Canada



*Future Arrivals refers to all arrivals that are 'future' relative to the referenced booking date.
Source: Global Agency Pro

Update: Apr 18, 2020

Travel Agency Bookings to Hawaii for Future Arrivals* Based on a 7-day Moving Average, 2020 vs 2019 Australia



*Future Arrivals refers to all arrivals that are 'future' relative to the referenced booking date.
Source: Global Agency Pro

Update: Apr 18, 2020