

HTA COVID-19 UPDATE

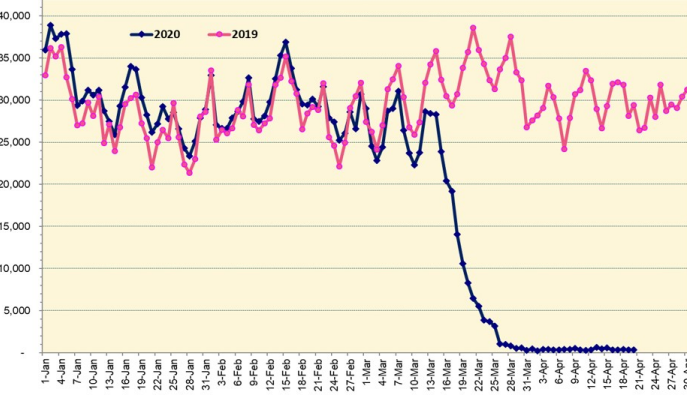
(Issued: 4/21/20 @ 3:30pm)

Novel Coronavirus in Hawaii

COVID-19 Positive* Cases

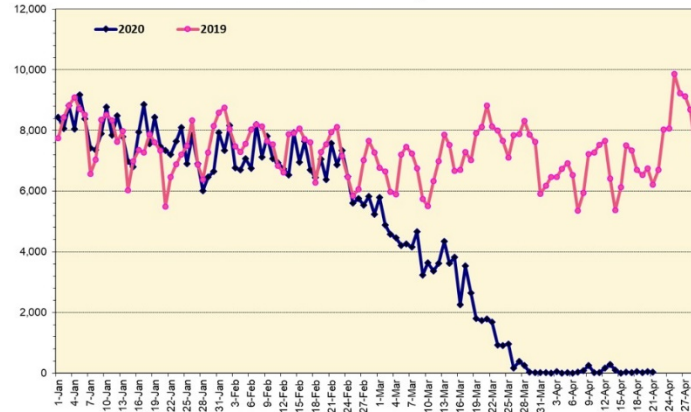
Cumulative totals as of 12:00 noon on April 21, 2020

Total Passenger Count



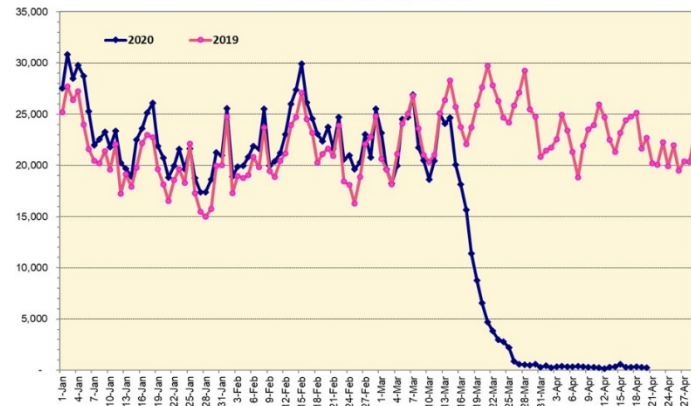
Note: Excludes flights from Canada

International Passenger Count



Note: Excludes flights from Canada

Domestic Passenger Count



Daily Passenger Count Table

04/20/2020	Domestic	International	Total
Oahu	265	48	313
Maui	0		0
Island of Hawaii	0		0
Kauai	0		0
State	265	48	313

4/21/20 Hawaii Passenger Arrivals by Air Update

Yesterday, 444 people arrived in Hawaii including 111 visitors and 151 residents. There were no flights to the neighbor islands from out of state yesterday. The state's mandatory 14-day self-quarantine started on March 26th for all passengers arriving in Hawaii from out of state. This table shows the number of people who arrived by air from out of state yesterday and does not include interisland travel.

	Kona	Maui	Oahu	Lihue	Total
Crew			89		89
Intended New Resident			38		38
Resident			151		151
Transit			55		55
Visitor			111		111
Grand Total	0	0	444	0	444
Flights	0	0	12	0	12

Market Impact Update: <https://www.dropbox.com/4/21/2020 HTA COVID19 Update>

Statewide	Total
Total Cases	586 (2 new)

Released from Isolation† 437

Required Hospitalization 56

Deaths 12

BY COUNTY	Total
-----------	-------

Hawaii County	
---------------	--

Total Cases 64

Released from Isolation† 38

Required Hospitalization 0

Deaths 0

Honolulu County	
-----------------	--

Total Cases 385

Released from Isolation† 322

Required Hospitalization 48

Deaths 7

Kauai County	
--------------	--

Total Cases 21

Released from Isolation† 17

Required Hospitalization 1

Deaths 0

Maui County	
-------------	--

Total Cases 110

Released from Isolation† 60

Required Hospitalization 7

Deaths 5

HI Residents diagnosed outside of HI	6
County Pending	0

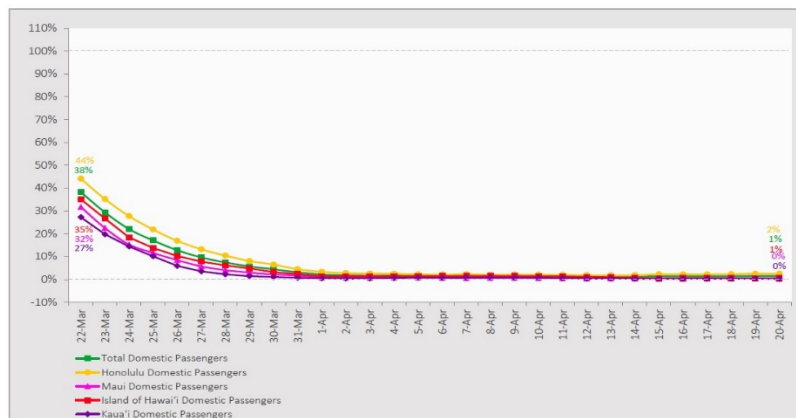
*includes presumptive and confirmed cases, data are preliminary and subject to change; note that CDC provides case counts according to states of residence.

†Isolation should be maintained until at least 3 days (72 hours) after resolution of fever and myalgia without the use of antipyretics OR at least 7 days have passed since symptom onset, whichever is longer.

7-Day Domestic by Island Moving Average Daily Passenger Volume

2020 Volume as Percentage of 2019 Volume

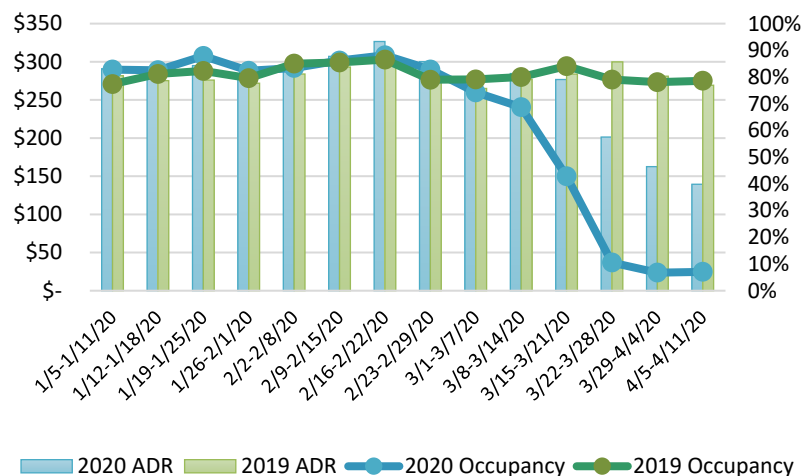
Through April 20, 2020



Source: HVCB analysis based on data from DBEDT

Note: Passenger volume figures include both visitors and residents.

State of Hawai'i Hotel Performance by Week - 2020 vs 2019



Source: STR, Inc. © Copyright 2020 Hawai'i Tourism Authority

Hawaii Hotel Performance Info:

For the week of April 5 – April 11, 2020

	Occupancy	ADR	RevPAR
State of Hawaii	7.1%	\$ 139.51	\$ 9.85
Oahu	7.1%	\$ 145.27	\$ 10.26
Maui County	7.2%	\$ 124.44	\$ 8.96
Kauai County	5.5%	\$ 167.34	\$ 9.26
Island of Hawaii	8.2%	\$ 120.54	\$ 9.88

Domestic by Island Month-to-Date and Year-to-Date Daily Passenger Volume

2020 Volume versus 2019 Volume

Through April 20, 2020

April 2020 (Month-to-Date through April 20)

	2020	2019	Volume Change	Percent Change
Honolulu	5,387	245,181	-239,794	-97.8%
Maui County	507	124,071	-123,564	-99.6%
Island of Hawai'i	469	53,791	-53,322	-99.1%
Kaua'i	186	38,172	-37,986	-99.5%
Total	6,549	461,215	-454,666	-98.6%

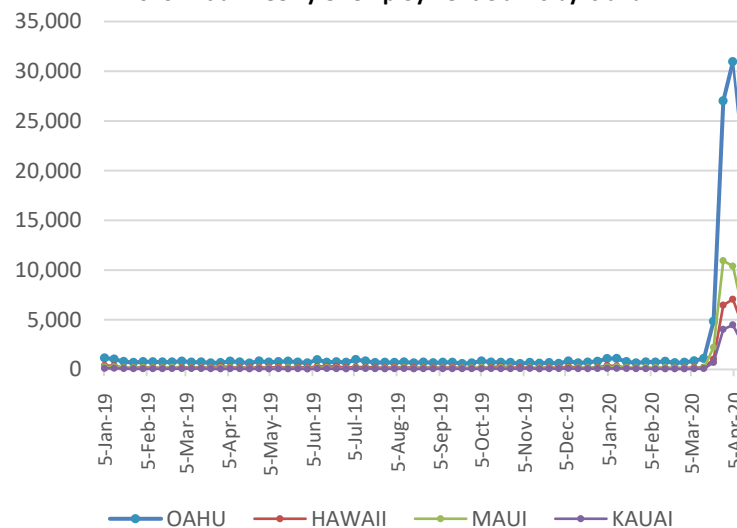
2020 (Year-to-Date through April 20)

	2020	2019	Volume Change	Percent Change
Honolulu	969,287	1,316,204	-346,917	-26.4%
Maui County	441,349	611,695	-170,346	-27.8%
Island of Hawai'i	216,577	303,289	-86,712	-28.6%
Kaua'i	148,790	215,589	-66,799	-31.0%
Total	1,776,003	2,446,777	-670,774	-27.4%

Source: HVCB analysis based on data from DBEDT

Note: Passenger volume figures include both visitors and residents. Total includes other international passengers. 2020 includes one additional day due to Leap Year (February 29th, 2020).

2020 Initial Weekly Unemployment Claims by Island



Weekly Unemployment Initial Claims: April 11, 2020

State of Hawaii	34,723
C&C of Oahu	21,548
Hawaii County	4,384
Maui County	5,996
Kauai County	2,589
Agent (filed in Hawaii against another state)	206

News Highlights

April 21, 2020

Hawaii News Now: [City extends stay-at-home order through May 31, but will reopen parks for exercise](#)

Hawaii News Now: [Despite decline in new cases, Ige says he's not ready to ease stay-at-home restrictions](#)

Hawaii Tribune-Herald: [Amid threats to supply chain, officials say Hawaii's farmers need help](#)

Hawaii Tribune-Herald: [Your Views for April 21](#)

Honolulu Star-Advertiser: [No walking or running on Oahu beaches, state officials say](#)

Honolulu Star-Advertiser: [Volunteers step up to deal with avalanche of unemployment claims in Hawaii](#)

Honolulu Star-Advertiser: [Gradual lifting of Hawaii's lockdown could start in a month](#)

KITV4: [Visitors in Hawaii rental units hard to track during virus](#)

The Garden Island: [State rules in question](#)

USA Today: [Treehouse isolation, python masks, farm-to-food bank: News from around our 50 states](#)

Helpful Resources

Department of Health

<https://hawaiicovid19.com/>

Department of Health

<https://health.hawaii.gov/docd/advisories/novel-coronavirus-2019>

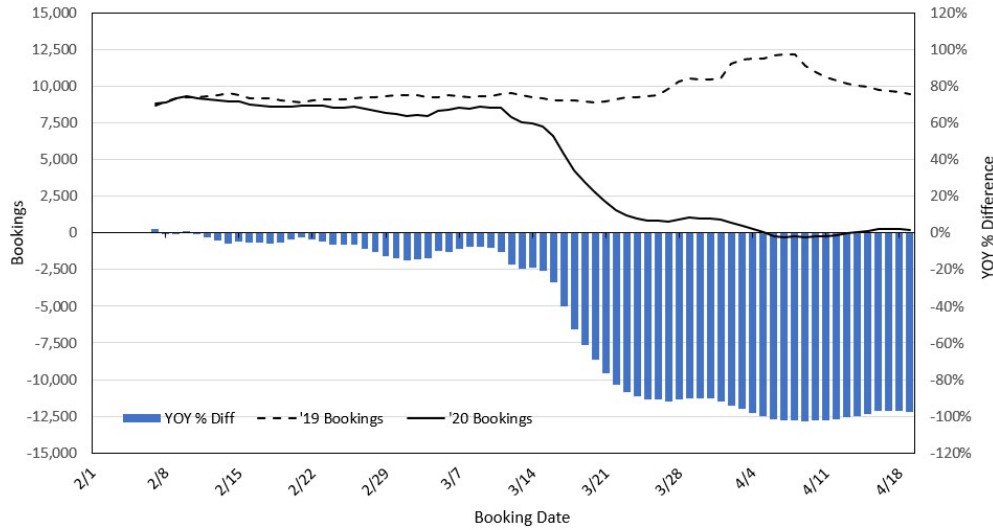
Dept. of Business, Economic Development & Tourism

<https://dbedt.hawaii.gov/economic/covid19/>

Department of Transportation

<https://hidot.hawaii.gov/coronavirus/>

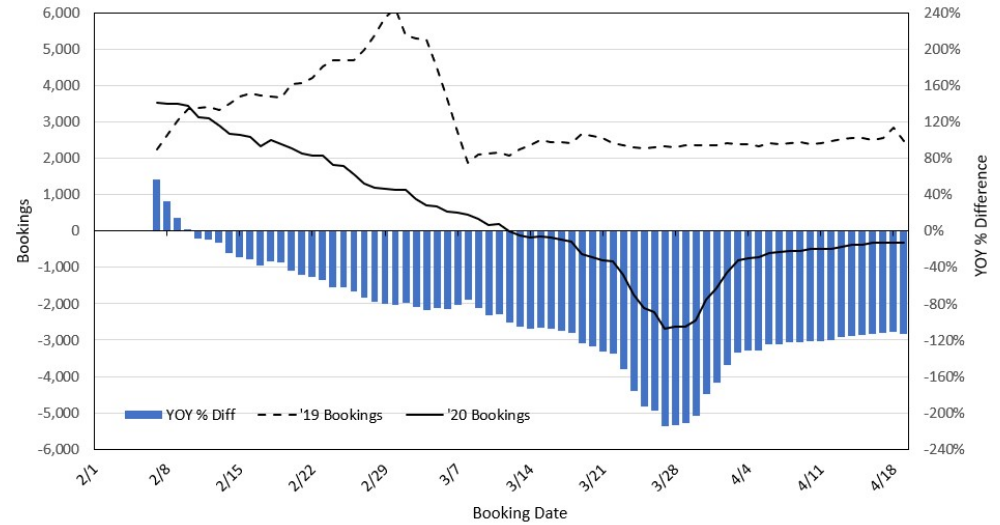
Travel Agency Bookings to Hawaii for Future Arrivals* Based on a 7-day Moving Average, 2020 vs 2019 U.S.



*Future Arrivals refers to all arrivals that are 'future' relative to the referenced booking date.
Source: Global Agency Pro

Update: Apr 19, 2020

Travel Agency Bookings to Hawaii for Future Arrivals* Based on a 7-day Moving Average, 2020 vs 2019 Japan



*Future Arrivals refers to all arrivals that are 'future' relative to the referenced booking date.
Source: Global Agency Pro

Update: Apr 19, 2020

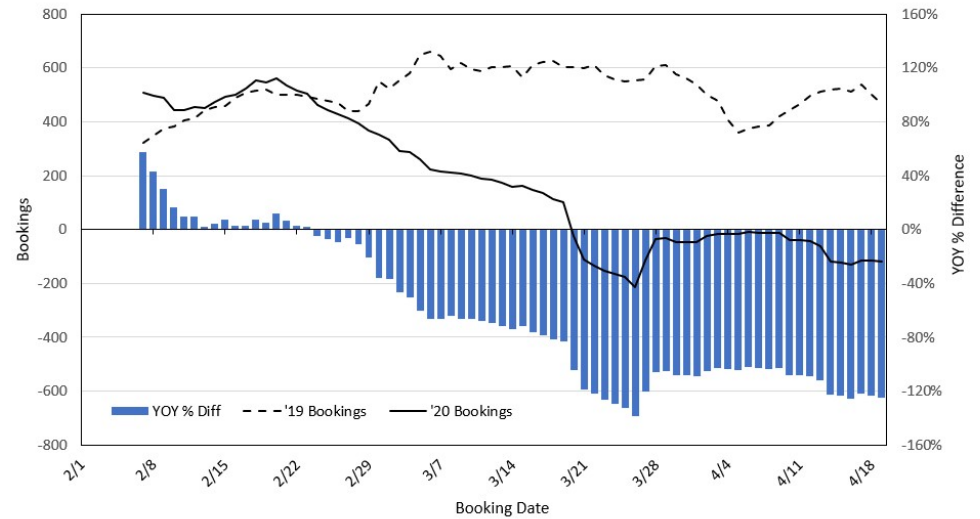
Travel Agency Bookings to Hawaii for Future Arrivals* Based on a 7-day Moving Average, 2020 vs 2019 Canada



*Future Arrivals refers to all arrivals that are 'future' relative to the referenced booking date.
Source: Global Agency Pro

Update: Apr 19, 2020

Travel Agency Bookings to Hawaii for Future Arrivals* Based on a 7-day Moving Average, 2020 vs 2019 Australia



*Future Arrivals refers to all arrivals that are 'future' relative to the referenced booking date.
Source: Global Agency Pro

Update: Apr 19, 2020