

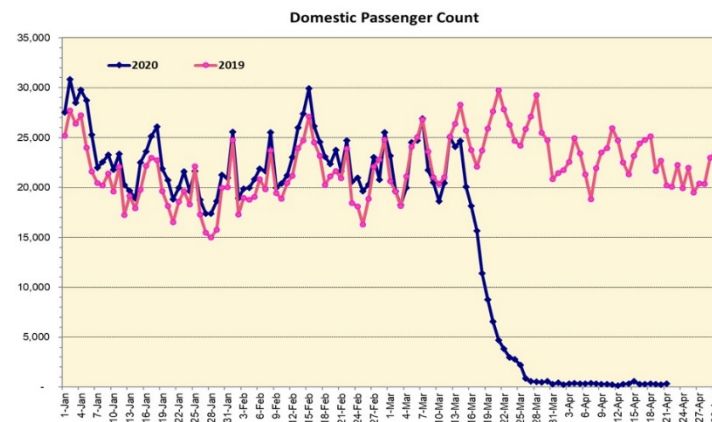
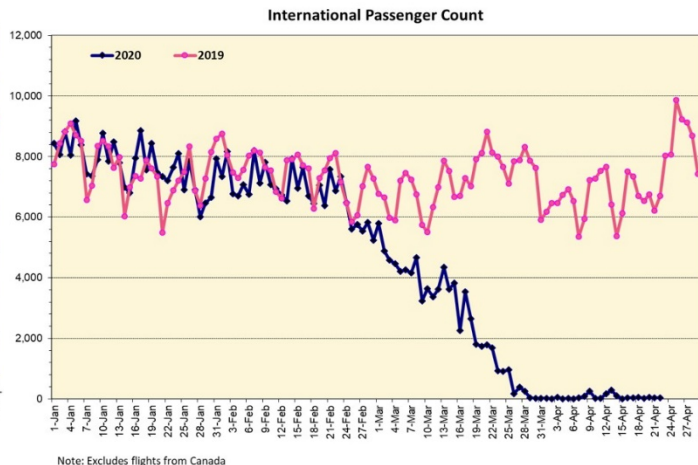
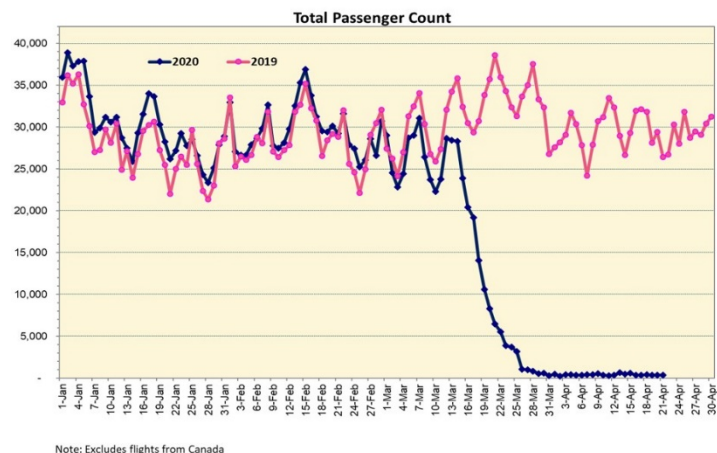
# HTA COVID-19 UPDATE

(Issued: 4/22/20 @ 3:30pm)

## Novel Coronavirus in Hawaii

COVID-19 Positive\* Cases

Cumulative totals as of 12:00 noon on April 22, 2020



### Daily Passenger Count Table

04/21/2020	Domestic	International	Total
Oahu	254	35	289
Maui	24		24
Island of Hawaii	47		47
Kauai	0		0
State	325	35	360

### 4/22/20 Hawaii Passenger Arrivals by Air Update

Yesterday, 488 people arrived in Hawaii including 139 visitors and 171 residents. During this same time last year, nearly 30,000 passengers arrived in Hawaii daily, including residents and visitors. The state's mandatory 14-day self-quarantine started on March 26<sup>th</sup> for all passengers arriving in Hawaii from out of state. The quarantine order was expanded on April 1<sup>st</sup> to include interisland travelers. This table shows the number of people who arrived by air from out of state yesterday and does not include interisland travel.

	Kona	Maui	Oahu	Lihue	Total
Crew	6	6	94	2	108
Intended New Resident	13		38		51
Resident	16	15	140		171
Transit			19		19
Visitor	18	10	111		139
<b>Grand Total</b>	<b>53</b>	<b>31</b>	<b>402</b>	<b>2</b>	<b>488</b>
Flights	1	1	12	1	15

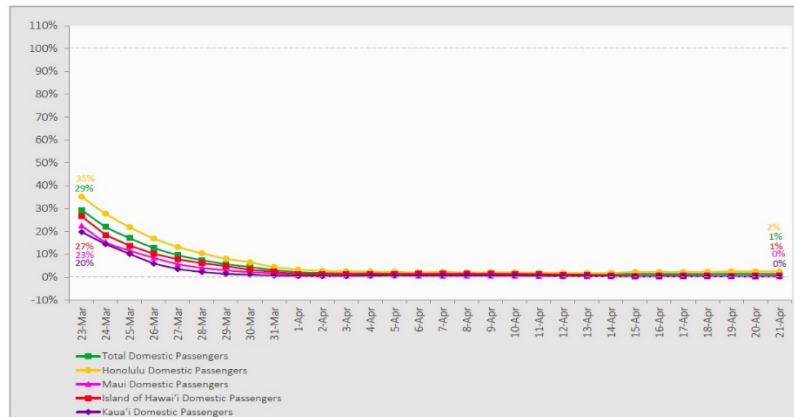
Statewide	Total
Total Cases	592 (6 new)
Released from Isolation†	444
Required Hospitalization	63
Deaths	12
BY COUNTY	Total
Hawaii County	
Total Cases	67
Released from Isolation†	38
Required Hospitalization	0
Deaths	0
Honolulu County	
Total Cases	388
Released from Isolation†	328
Required Hospitalization	53
Deaths	7
Kauai County	
Total Cases	21
Released from Isolation†	18
Required Hospitalization	1
Deaths	0
Maui County	
Total Cases	110
Released from Isolation†	60
Required Hospitalization	9
Deaths	5
HI Residents diagnosed outside of HI	6
County Pending	0

\*includes presumptive and confirmed cases, data are preliminary and subject to change; note that CDC provides case counts according to states of residence.

†Isolation should be maintained until at least 3 days (72 hours) after resolution of fever and myalgia without the use of antipyretics OR at least 7 days have passed since symptom onset, whichever is longer.

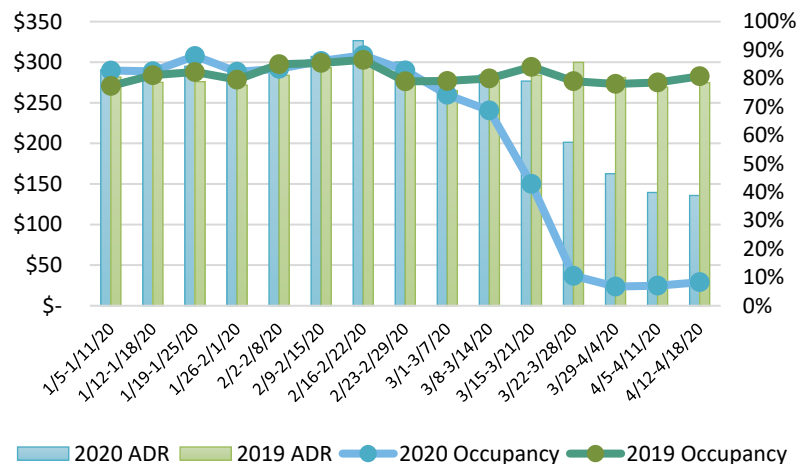
## 7-Day Domestic by Island Moving Average Daily Passenger Volume

2020 Volume as Percentage of 2019 Volume  
Through April 21, 2020



Source: HVCB analysis based on data from DBEDT  
Note: Passenger volume figures include both visitors and residents.

## State of Hawai'i Hotel Performance by Week - 2020 vs 2019



Source: STR, Inc. © Copyright 2020 Hawai'i Tourism Authority

## Hawaii Hotel Performance Info: For the week of April 12 – April 18, 2020

	Occupancy	ADR	RevPAR
State of Hawaii	8.3%	\$ 135.81	\$ 11.27
Oahu	8.0%	\$ 143.16	\$ 11.39
Maui County	8.2%	\$ 118.38	\$ 9.71
Kauai County	7.0%	\$ 158.00	\$ 11.06
Island of Hawaii	11.4%	\$ 119.63	\$ 13.66

## Helpful Resources

Department of Health  
<https://hawaiiocovid19.com/>

Department of Health  
<https://health.hawaii.gov/docd/advisories/novel-coronavirus-2019>

## Domestic by Island Month-to-Date and Year-to-Date Daily Passenger Volume

2020 Volume versus 2019 Volume  
Through April 21, 2020

### April 2020 (Month-to-Date through April 21)

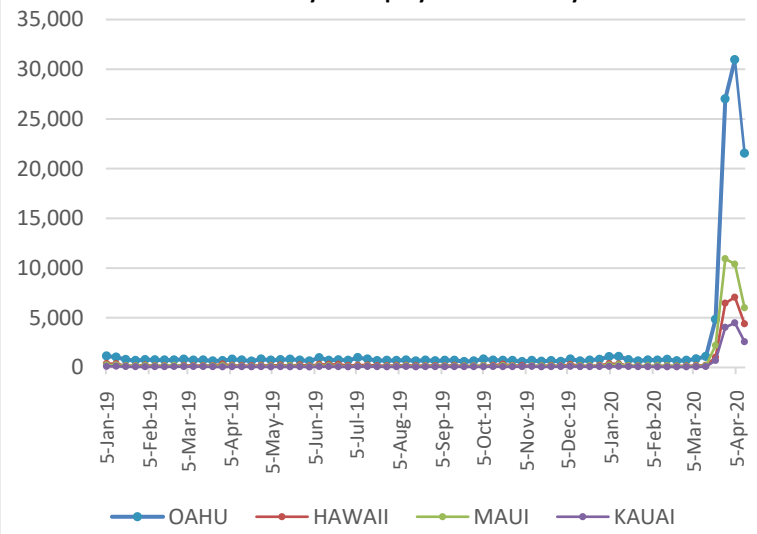
	2020	2019	Volume Change	Percent Change
Honolulu	5,641	257,473	-251,832	-97.8%
Maui County	531	129,557	-129,026	-99.6%
Island of Hawai'i	516	55,994	-55,478	-99.1%
Kaua'i	186	39,812	-39,626	-99.5%
Total	6,874	482,836	-475,962	-98.6%

### 2020 (Year-to-Date through April 21)

	2020	2019	Volume Change	Percent Change
Honolulu	969,541	1,328,496	-358,955	-27.0%
Maui County	441,373	617,181	-175,808	-28.5%
Island of Hawai'i	216,624	305,492	-88,868	-29.1%
Kaua'i	148,790	217,229	-68,439	-31.5%
Total	1,776,328	2,468,398	-692,070	-28.0%

Source: HVCB analysis based on data from DBEDT  
Note: Passenger volume figures include both visitors and residents. Total includes other international passengers. 2020 includes one additional day due to Leap Year (February 29th, 2020).

## 2020 Initial Weekly Unemployment Claims by Island



## Weekly Unemployment Initial Claims: April 11, 2020

State of Hawaii	34,723
C&C of Oahu	21,548
Hawaii County	4,384
Maui County	5,996
Kauai County	2,589
Agent (filed in Hawaii against another state)	206

Dept. of Business, Economic Development & Tourism  
<https://dbedt.hawaii.gov/economic/covid19/>

## News Highlights

April 22, 2020

**Hawaii News Now:** [City extends stay-at-home order through May 31, but will reopen parks for exercise](#)

**KITV4:** [Tourists' IG posts get them busted for breaking 14-day quarantine](#)

**Honolulu Star-Advertiser:** [Hawaii's visitor industry showed signs of deterioration before hotels began to close](#)

**West Hawaii Today:** [Kim's new rule: No masks, no service](#)

**West Hawaii Today:** [Kona roller derby team members raise funds, purchase 1,000 N95 masks for health care workers](#)

**Hawaii Magazine:** [Earth is on Vacation in Hawaii Right Now](#)

**Skift:** [Physical Distancing Measures on Aircrafts Would Make Cheap Travel Impossible](#)

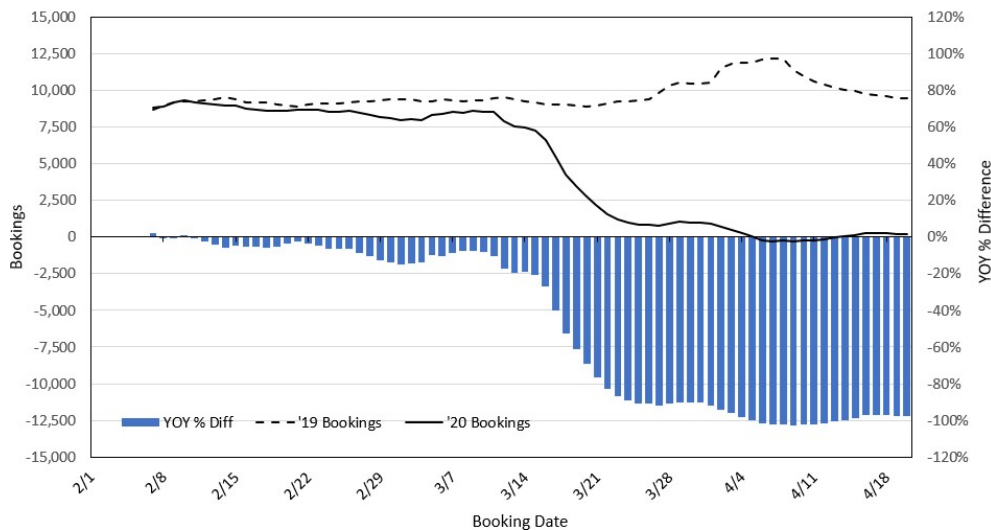
**Travel Pulse:** [How the Travel Industry Is Becoming More Eco-Friendly](#)

**Travel Agent Central:** [Stats: Travelers More Optimistic, See Global Situation Improving](#)

**Travel Weekly:** [Professor Sheldon Jacobson on reducing Covid risks at airports](#)

Department of Transportation  
<https://hidot.hawaii.gov/coronavirus/>

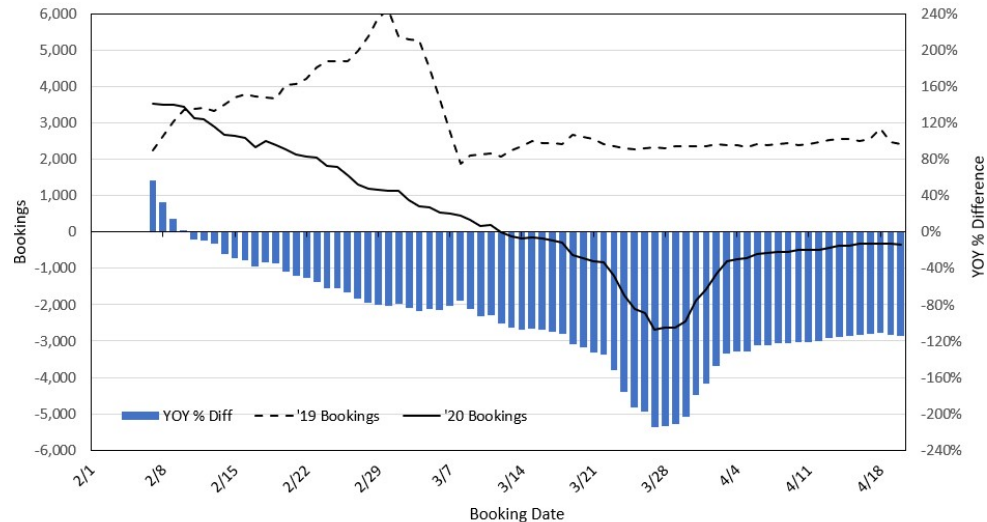
### Travel Agency Bookings to Hawaii for Future Arrivals\* Based on a 7-day Moving Average, 2020 vs 2019 U.S.



\*Future Arrivals refers to all arrivals that are 'future' relative to the referenced booking date.  
Source: Global Agency Pro

Update: Apr 20, 2020

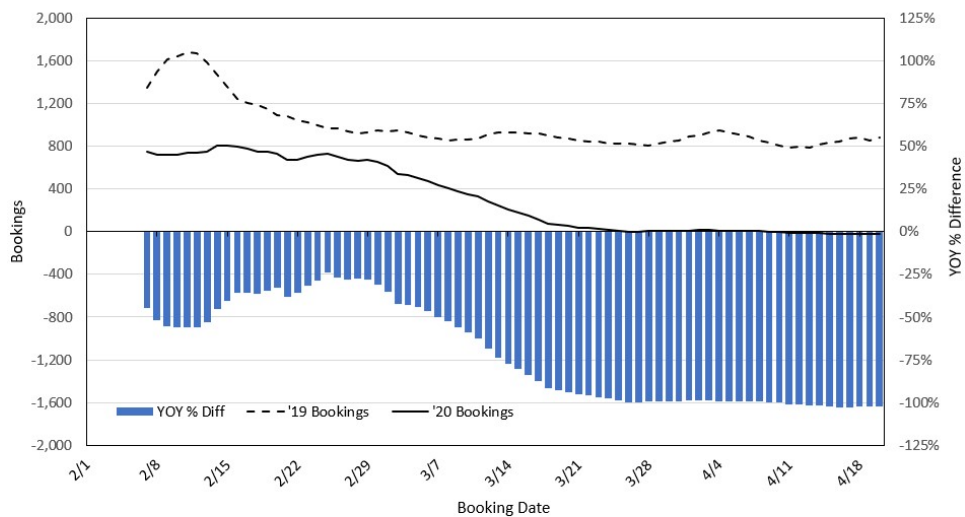
### Travel Agency Bookings to Hawaii for Future Arrivals\* Based on a 7-day Moving Average, 2020 vs 2019 Japan



\*Future Arrivals refers to all arrivals that are 'future' relative to the referenced booking date.  
Source: Global Agency Pro

Update: Apr 20, 2020

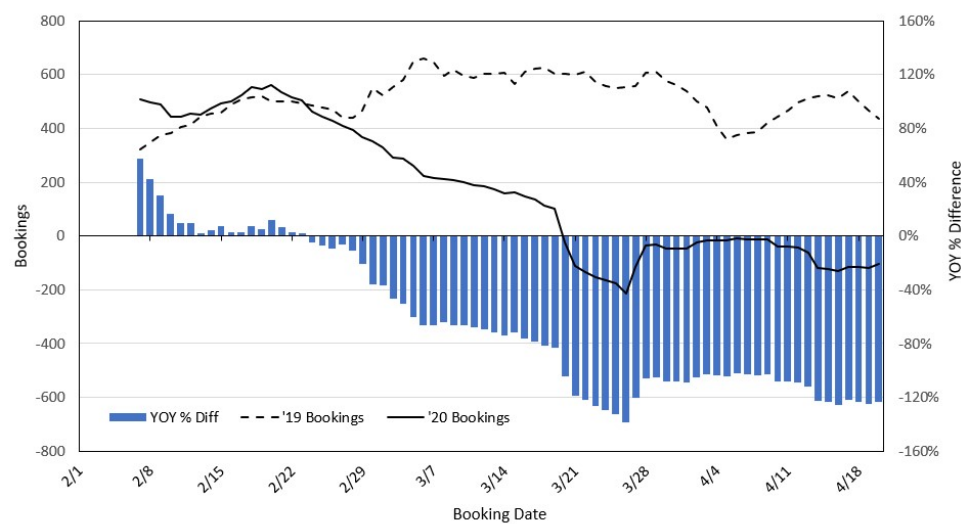
### Travel Agency Bookings to Hawaii for Future Arrivals\* Based on a 7-day Moving Average, 2020 vs 2019 Canada



\*Future Arrivals refers to all arrivals that are 'future' relative to the referenced booking date.  
Source: Global Agency Pro

Update: Apr 20, 2020

### Travel Agency Bookings to Hawaii for Future Arrivals\* Based on a 7-day Moving Average, 2020 vs 2019 Australia



\*Future Arrivals refers to all arrivals that are 'future' relative to the referenced booking date.  
Source: Global Agency Pro

Update: Apr 20, 2020