

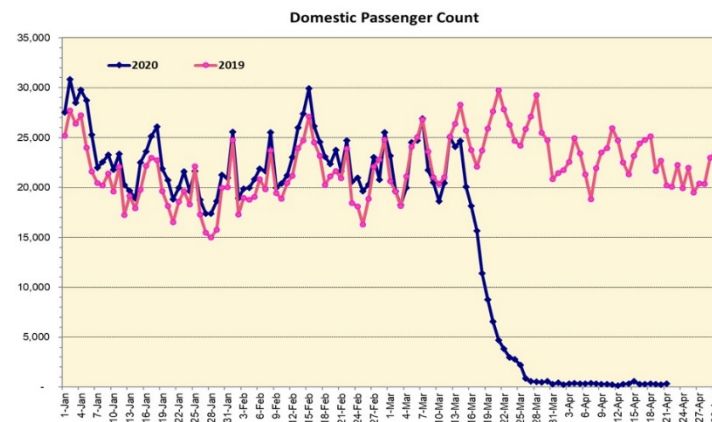
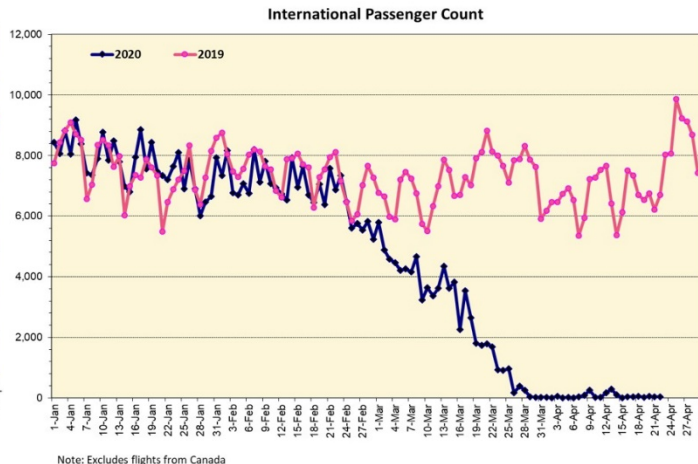
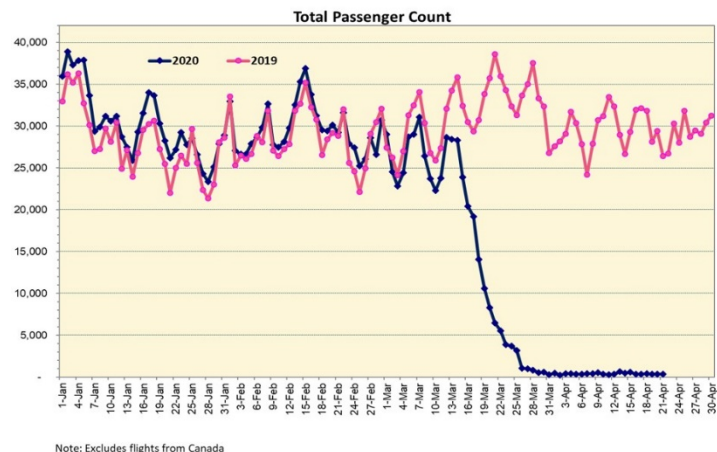
HTA COVID-19 UPDATE

(Issued: 4/23/20 @ 3:30pm)

Novel Coronavirus in Hawaii

COVID-19 Positive* Cases

Cumulative totals as of 12:00 noon on April 23, 2020



Daily Passenger Count Table

04/22/2020	Domestic	International	Total
Oahu	215	41	256
Maui	49		49
Island of Hawaii	0		0
Kauai	13		13
State	277	41	318

4/23/20 Hawaii Passenger Arrivals by Air Update

Today marks one month since the state's mandatory 14-day self-quarantine started for all passengers arriving in Hawaii from out of state. Yesterday, 421 people arrived in Hawaii including 109 visitors and 166 residents. During this same time last year, nearly 30,000 passengers arrived in Hawaii daily, including residents and visitors. The quarantine order was expanded on April 1st to include interisland travelers. This table shows the number of people who arrived by air from out of state yesterday and does not include interisland travel.

	Kona	Maui	Oahu	Lihue	Total
Crew		2	73	1	76
Intended New Resident			45	1	46
Resident		35	124	7	166
Transit			24		24
Visitor		14	90	5	109
Grand Total	0	51	356	14	421
Flights	0	1	10	1	12

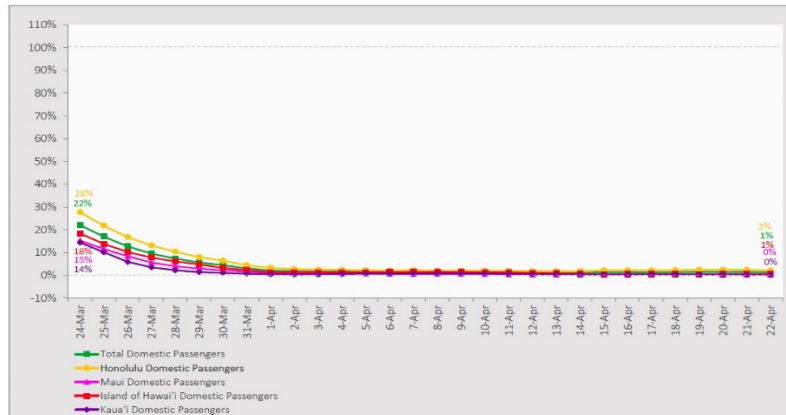
Statewide	Total
Total Cases	596 (4 new)
Released from Isolation†	455
Required Hospitalization	63
Deaths	12
BY COUNTY	Total
Hawaii County	
Total Cases	68
Released from Isolation†	39
Required Hospitalization	0
Deaths	0
Honolulu County	
Total Cases	389
Released from Isolation†	337
Required Hospitalization	53
Deaths	7
Kauai County	
Total Cases	21
Released from Isolation†	19
Required Hospitalization	1
Deaths	0
Maui County	
Total Cases	112
Released from Isolation†	60
Required Hospitalization	9
Deaths	5
HI Residents diagnosed outside of HI	6
County Pending	0

*includes presumptive and confirmed cases, data are preliminary and subject to change; note that CDC provides case counts according to states of residence.

†Isolation should be maintained until at least 3 days (72 hours) after resolution of fever and myalgia without the use of antipyretics OR at least 7 days have passed since symptom onset, whichever is longer.

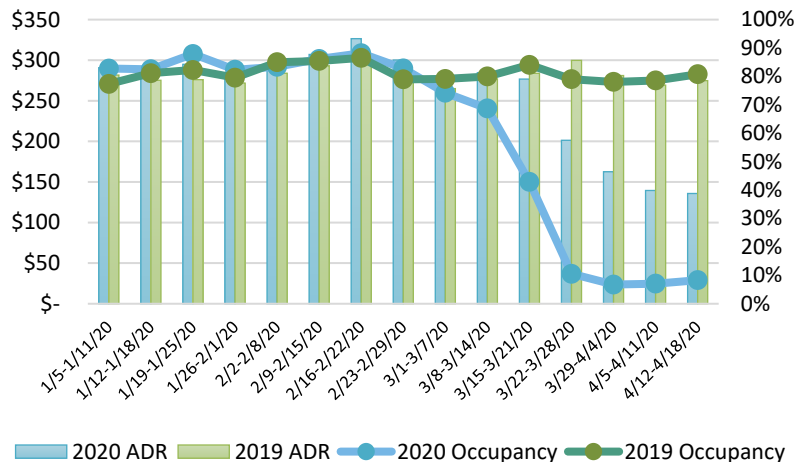
7-Day Domestic by Island Moving Average Daily Passenger Volume

2020 Volume as Percentage of 2019 Volume
Through April 22, 2020



Source: HVCB analysis based on data from DBEDT
Note: Passenger volume figures include both visitors and residents.

State of Hawai'i Hotel Performance by Week - 2020 vs 2019



Hawaii Hotel Performance Info:

For the week of April 12 – April 18, 2020

	Occupancy	ADR	RevPAR
State of Hawaii	8.3%	\$ 135.81	\$ 11.27
Oahu	8.0%	\$ 143.16	\$ 11.39
Maui County	8.2%	\$ 118.38	\$ 9.71
Kauai County	7.0%	\$ 158.00	\$ 11.06
Island of Hawaii	11.4%	\$ 119.63	\$ 13.66

Helpful Resources

Department of Health
<https://hawaiiocovid19.com/>

Department of Health

<https://health.hawaii.gov/docd/advisories/novel-coronavirus-2019>

Domestic by Island Month-to-Date and Year-to-Date Daily Passenger Volume

2020 Volume versus 2019 Volume
Through April 22, 2020

April 2020 (Month-to-Date through April 22)

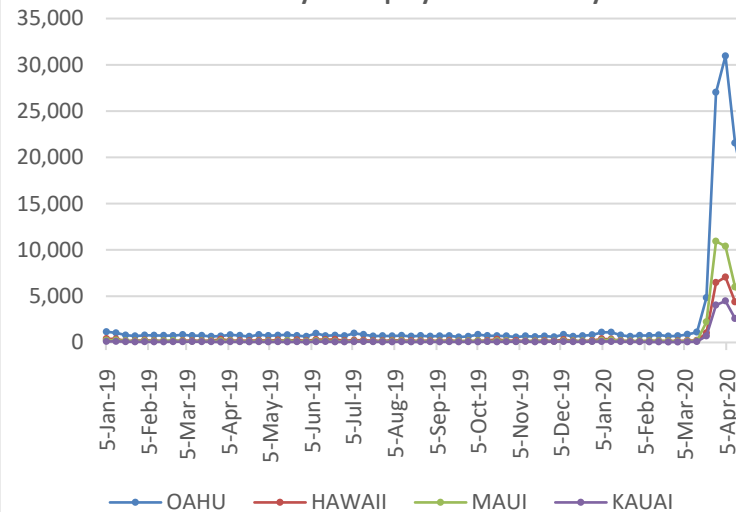
	2020	2019	Volume Change	Percent Change
Honolulu	5,856	269,888	-264,032	-97.8%
Maui County	580	135,670	-135,090	-99.6%
Island of Hawai'i	516	58,412	-57,896	-99.1%
Kaua'i	199	41,538	-41,339	-99.5%
Total	7,151	505,508	-498,357	-98.6%

2020 (Year-to-Date through April 22)

	2020	2019	Volume Change	Percent Change
Honolulu	969,756	1,340,911	-371,155	-27.7%
Maui County	441,422	623,294	-181,872	-29.2%
Island of Hawai'i	216,624	307,910	-91,286	-29.6%
Kaua'i	148,803	218,955	-70,152	-32.0%
Total	1,776,605	2,491,070	-714,465	-28.7%

Source: HVCB analysis based on data from DBEDT
Note: Passenger volume figures include both visitors and residents. Total includes other international passengers. 2020 includes one additional day due to Leap Year (February 29th, 2020).

2020 Initial Weekly Unemployment Claims by Island



Weekly Unemployment Initial Claims: April 18, 2020

State of Hawaii	26,599
C&C of Oahu	16,790
Hawaii County	3,373
Maui County	4,1500
Kauai County	2,046
Agent (filed in Hawaii against another state)	240

News Highlights

April 23, 2020

KHON: [4 new cases of COVID-19 bring state total to 596](#)

Hawaii News Now: [A unique Hawaii celebration almost 150 years old is called off](#)

KITV: [Mayor Kirk Caldwell says the Hawaii State Department of Health objected to test kits Honolulu wanted to purchase](#)

The Garden Island: [Restrictions could be relaxed if no community spread](#)

Hawaii Tribune-Herald: [Tourism official lays out his vision for industry reboot](#)

Honolulu Star-Advertiser: [Senators say plan needed as airlines resume flying to Hawaii](#)

Honolulu Star-Advertiser: [Visitors still trickling into Hawaii, but most passengers are residents](#)

KITV4: [Visiting couple who violated quarantine multiple times on Oahu have been caught](#)

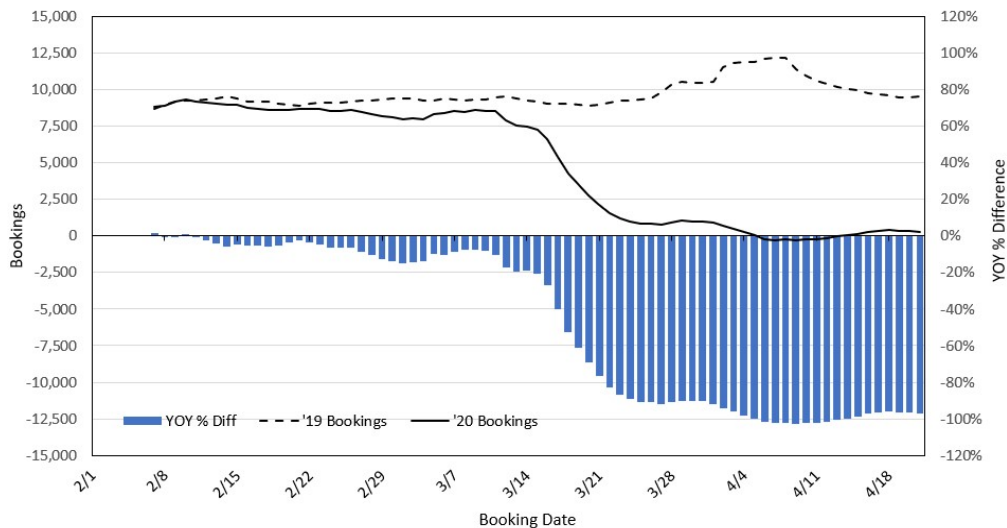
KCBD: [Coronavirus: Model projects when states could safely reopen businesses](#)

Travel Weekly: [Hawaii tightens arrivals screening](#)

Dept. of Business, Economic Development & Tourism
<https://dbedt.hawaii.gov/economic/covid19/>

Department of Transportation
<https://hidot.hawaii.gov/coronavirus/>

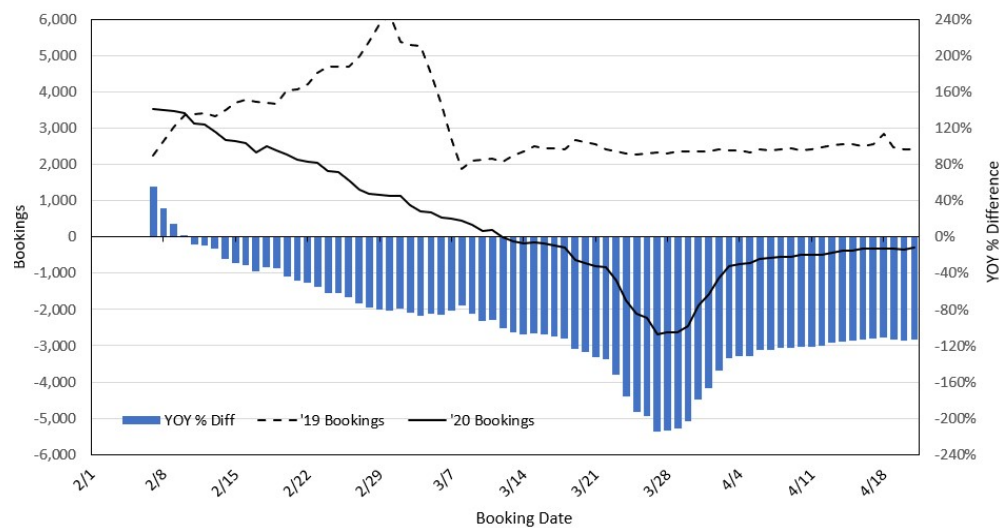
Travel Agency Bookings to Hawaii for Future Arrivals* Based on a 7-day Moving Average, 2020 vs 2019 U.S.



*Future Arrivals refers to all arrivals that are 'future' relative to the referenced booking date.
Source: Global Agency Pro

Update: Apr 21, 2020

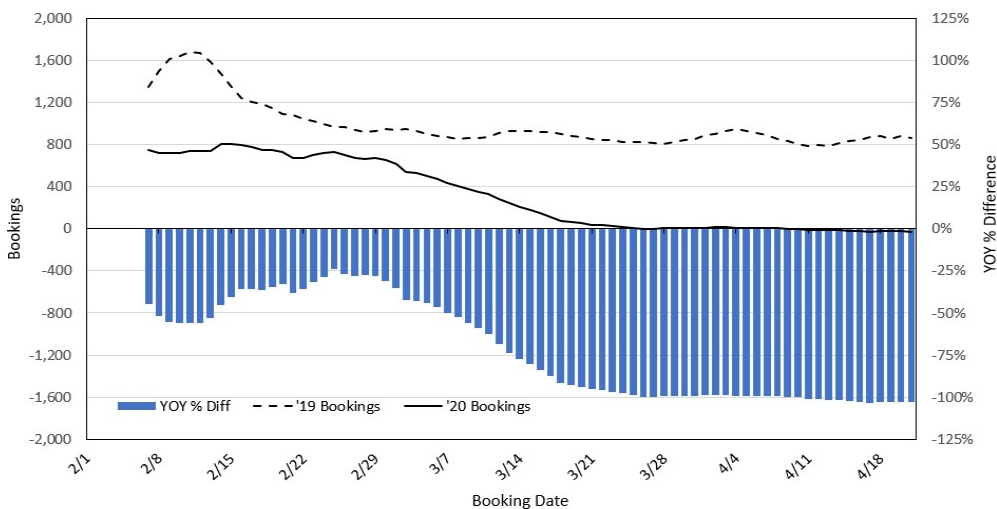
Travel Agency Bookings to Hawaii for Future Arrivals* Based on a 7-day Moving Average, 2020 vs 2019 Japan



*Future Arrivals refers to all arrivals that are 'future' relative to the referenced booking date.
Source: Global Agency Pro

Update: Apr 21, 2020

Travel Agency Bookings to Hawaii for Future Arrivals* Based on a 7-day Moving Average, 2020 vs 2019 Canada



*Future Arrivals refers to all arrivals that are 'future' relative to the referenced booking date.
Source: Global Agency Pro

Update: Apr 21, 2020

Travel Agency Bookings to Hawaii for Future Arrivals* Based on a 7-day Moving Average, 2020 vs 2019 Australia



*Future Arrivals refers to all arrivals that are 'future' relative to the referenced booking date.
Source: Global Agency Pro

Update: Apr 21, 2020