

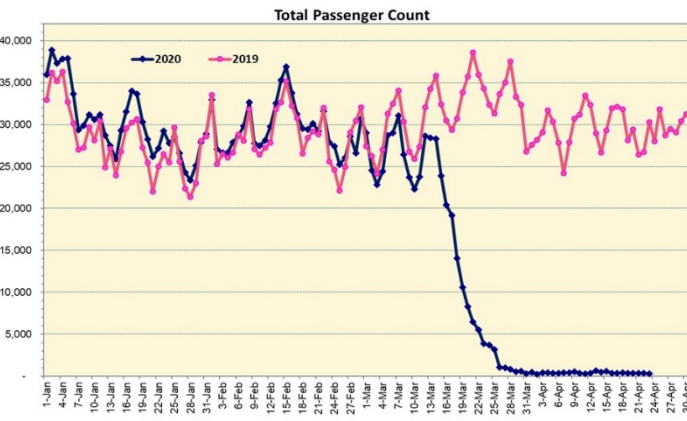
HTA COVID-19 UPDATE

(Issued: 4/24/20 @ 4:30pm)

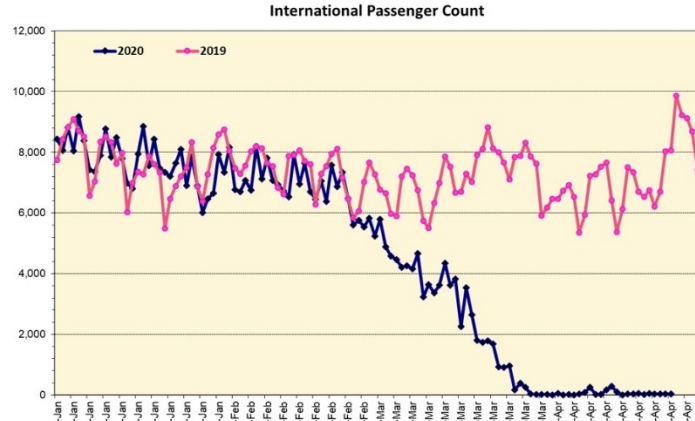
Novel Coronavirus in Hawaii

COVID-19 Positive* Cases

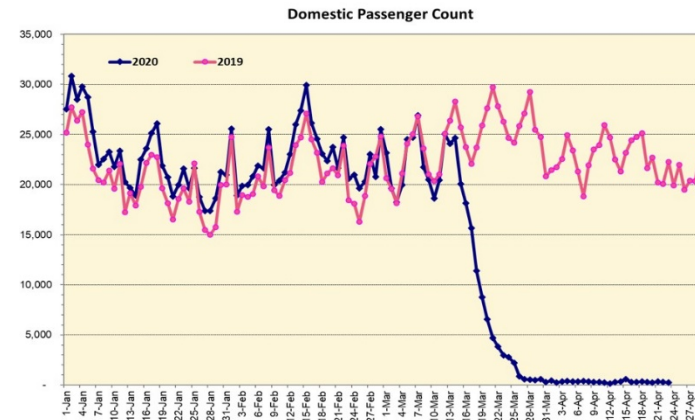
Cumulative totals as of 12:00 noon on April 24, 2020



Note: Excludes flights from Canada



Note: Excludes flights from Canada



Daily Passenger Count Table

04/23/2020	Domestic	International	Total
Oahu	242	44	286
Maui	0		0
Island of Hawaii	23		23
Kauai	0		0
State	265	44	309

4/24/20 Hawaii Passenger Arrivals by Air Update

Yesterday, 438 people arrived in Hawaii including 83 visitors and 182 residents. During this same time last year, nearly 30,000 passengers arrived in Hawaii daily, including residents and visitors. Yesterday marked one month since the state's mandatory 14-day self-quarantine started for all passengers arriving in Hawaii from out of state. The quarantine order was expanded on April 1st to include interisland travelers. This table shows the number of people who arrived by air from out of state yesterday and does not include interisland travel.

	Kona	Maui	Oahu	Lihue	Total
Crew	6		86		92
Intended New Resident	7		33		40
Resident	12		170		182
Transit			41		41
Visitor	4		79		83
Grand Total	29	0	409	0	438
Flights	1	0	12	0	13

Statewide	Total
Total Cases	601 (5 new)
Released from Isolation†	463
Required Hospitalization	67
Deaths	13
BY COUNTY	Total
Hawaii County	
Total Cases	69
Released from Isolation†	40
Required Hospitalization	1
Deaths	0
Honolulu County	
Total Cases	392
Released from Isolation†	339
Required Hospitalization	53
Deaths	8
Kauai County	
Total Cases	21
Released from Isolation†	19
Required Hospitalization	1
Deaths	0
Maui County	
Total Cases	113
Released from Isolation†	65
Required Hospitalization	12
Deaths	5
HI Residents diagnosed outside of HI	6
County Pending	0

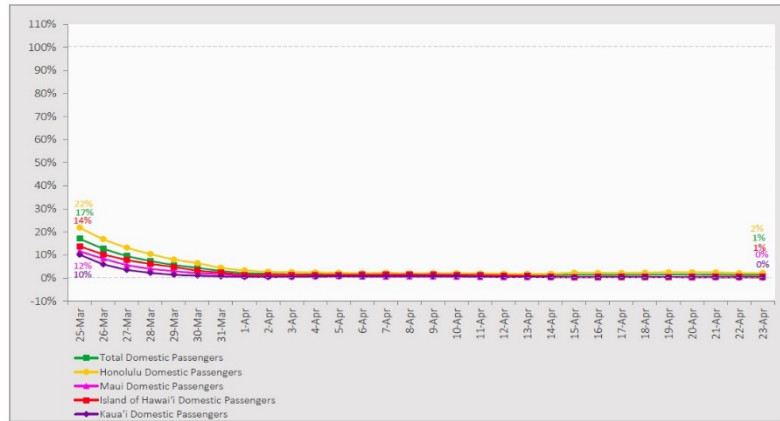
*includes presumptive and confirmed cases, data are preliminary and subject to change; note that CDC provides case counts according to states of residence.

†Isolation should be maintained until at least 3 days (72 hours) after resolution of fever and myalgia without the use of antipyretics OR at least 7 days have passed since symptom onset, whichever is longer.

Market Impact Update: <https://www.dropbox.com/4/24/2020 HTA COVID19 Update>

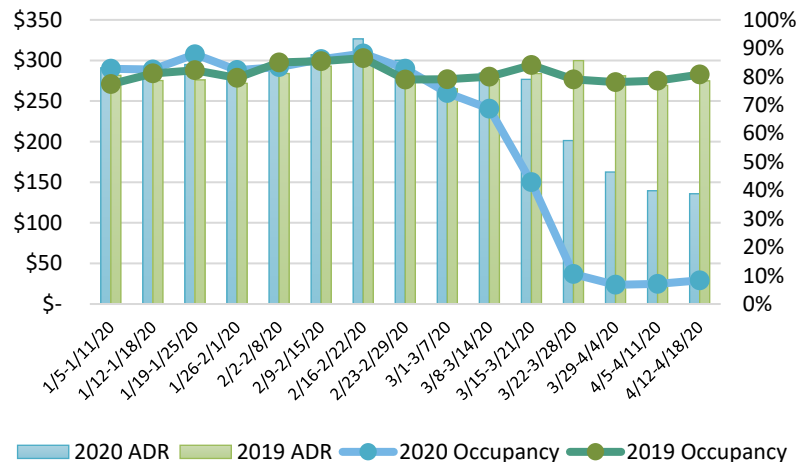
7-Day Domestic by Island Moving Average Daily Passenger Volume

2020 Volume as Percentage of 2019 Volume
Through April 23, 2020



Source: HVCB analysis based on data from DBEDT
Note: Passenger volume figures include both visitors and residents.

State of Hawai'i Hotel Performance by Week - 2020 vs 2019



Source: STR, Inc. © Copyright 2020 Hawai'i Tourism Authority

Hawaii Hotel Performance Info:

For the week of April 12 – April 18, 2020

	Occupancy	ADR	RevPAR
State of Hawaii	8.3%	\$ 135.81	\$ 11.27
Oahu	8.0%	\$ 143.16	\$ 11.39
Maui County	8.2%	\$ 118.38	\$ 9.71
Kauai County	7.0%	\$ 158.00	\$ 11.06
Island of Hawaii	11.4%	\$ 119.63	\$ 13.66

Domestic by Island Month-to-Date and Year-to-Date Daily Passenger Volume

2020 Volume versus 2019 Volume
Through April 23, 2020

April 2020 (Month-to-Date through April 23)

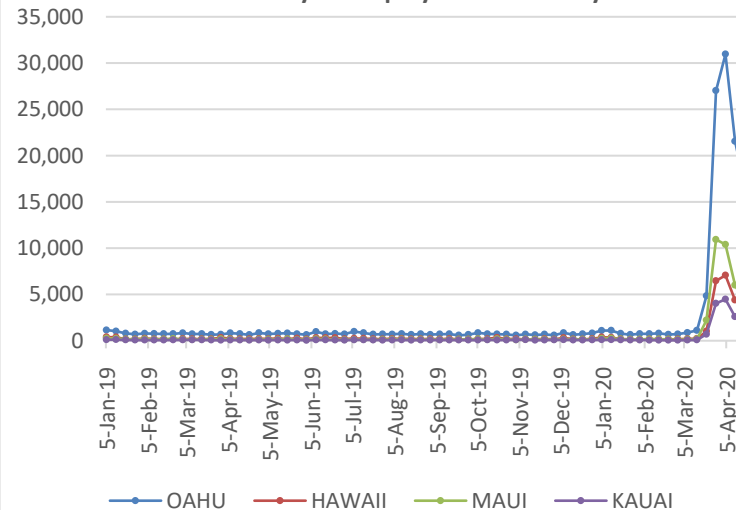
	2020	2019	Volume Change	Percent Change
Honolulu	6,098	280,927	-274,829	-97.8%
Maui County	580	141,136	-140,556	-99.6%
Island of Hawai'i	539	60,541	-60,002	-99.1%
Kaua'i	199	43,106	-42,907	-99.5%
Total	7,416	525,710	-518,294	-98.6%

2020 (Year-to-Date through April 23)

	2020	2019	Volume Change	Percent Change
Honolulu	969,998	1,351,950	-381,952	-28.3%
Maui County	441,422	628,760	-187,338	-29.8%
Island of Hawai'i	216,647	310,039	-93,392	-30.1%
Kaua'i	148,803	220,523	-71,720	-32.5%
Total	1,776,870	2,511,272	-734,402	-29.2%

Source: HVCB analysis based on data from DBEDT
Note: Passenger volume figures include both visitors and residents. Total includes other international passengers. 2020 includes one additional day due to Leap Year (February 29th, 2020).

2020 Initial Weekly Unemployment Claims by Island



Weekly Unemployment Initial Claims: April 18, 2020

State of Hawaii	26,599
C&C of Oahu	16,790
Hawaii County	3,373
Maui County	4,1500
Kauai County	2,046
Agent (filed in Hawaii against another state)	240

News Highlights

April 24, 2020

Honolulu Star-Advertiser: [Honolulu Mayor Kirk Caldwell outlines plan to reopen Hawaii businesses](#)

Hawaii News Now: [Authorities hope arrests of visitors for quarantine violations deter others from coming](#)

KHON2: [HTA rolling out new procedures to prevent quarantine rule breaking](#)

The Garden Island: [The time is now to plan the safe resumption of life on Kauai](#)

West Hawaii Today: [Visitors busted for violating 14-day quarantine](#)

The Garden Island: [Falling through the cracks](#)

CNN: [The Hawaii Tourism Authority is now paying for visitors to leave](#)

USA Today: [Hawaiian tourism groups will pay to fly visitors who violate self-quarantine rule home](#)

USA Today: ['They are making it really difficult': Timeshare owners navigate coronavirus cancellation policies](#)

Helpful Resources

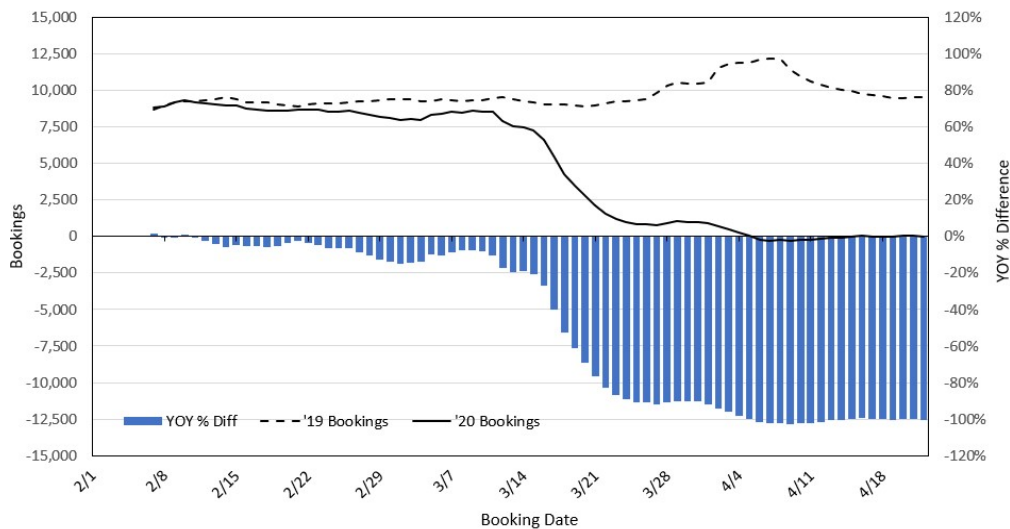
Department of Health
<https://hawaiiocovid19.com/>

Department of Health
<https://health.hawaii.gov/docd/advisories/novel-coronavirus-2019>

Dept. of Business, Economic Development & Tourism
<https://dbedt.hawaii.gov/economic/covid19/>

Department of Transportation
<https://hidot.hawaii.gov/coronavirus/>

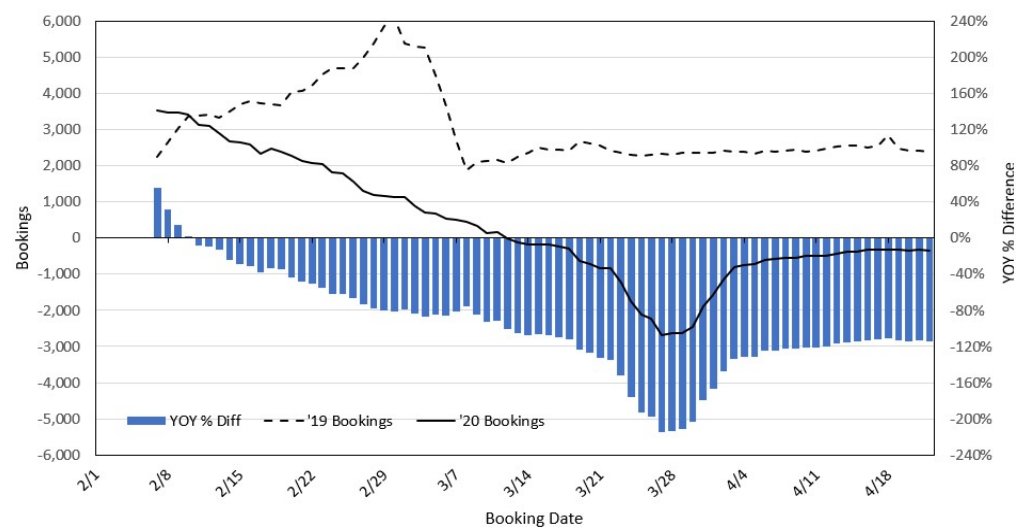
Travel Agency Bookings to Hawaii for Future Arrivals* Based on a 7-day Moving Average, 2020 vs 2019 U.S.



*Future Arrivals refers to all arrivals that are 'future' relative to the referenced booking date.
Source: Global Agency Pro

Update: Apr 22, 2020

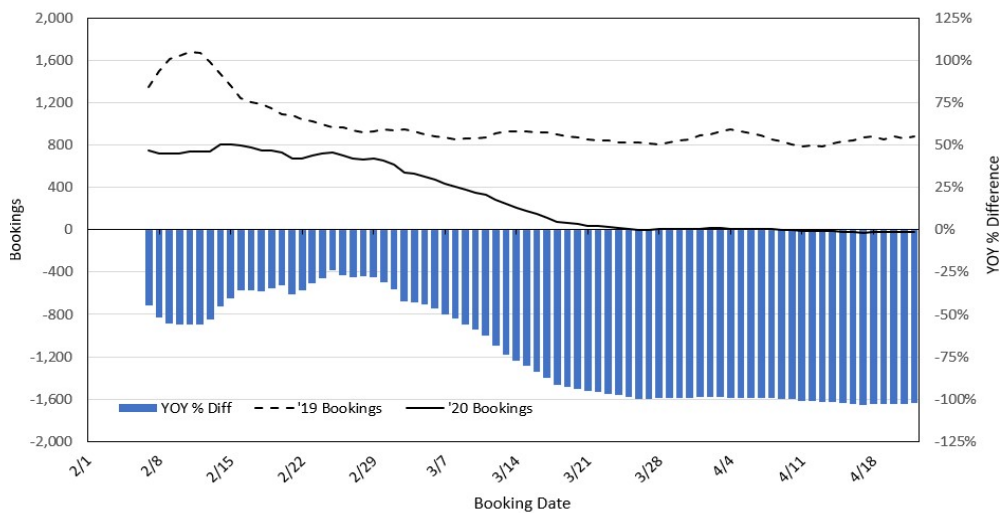
Travel Agency Bookings to Hawaii for Future Arrivals* Based on a 7-day Moving Average, 2020 vs 2019 Japan



*Future Arrivals refers to all arrivals that are 'future' relative to the referenced booking date.
Source: Global Agency Pro

Update: Apr 22, 2020

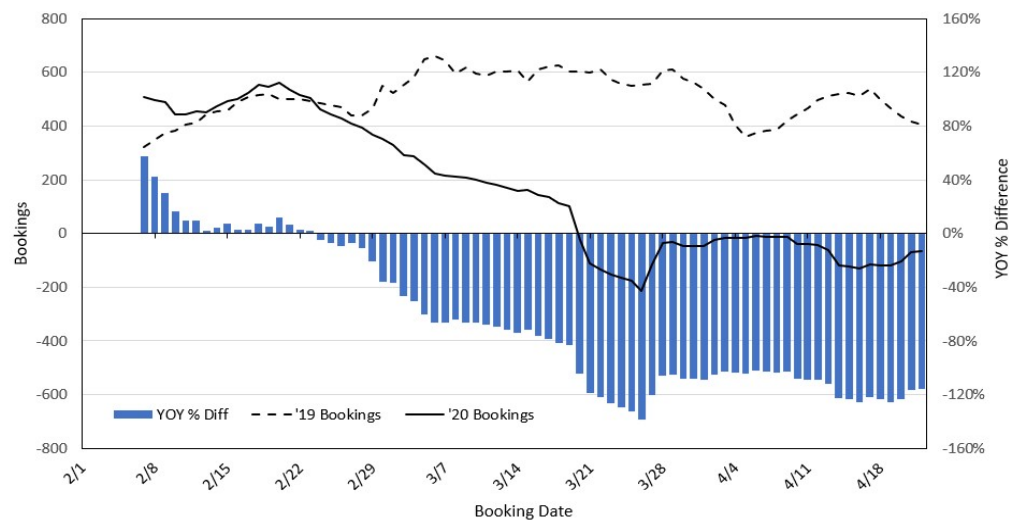
Travel Agency Bookings to Hawaii for Future Arrivals* Based on a 7-day Moving Average, 2020 vs 2019 Canada



*Future Arrivals refers to all arrivals that are 'future' relative to the referenced booking date.
Source: Global Agency Pro

Update: Apr 22, 2020

Travel Agency Bookings to Hawaii for Future Arrivals* Based on a 7-day Moving Average, 2020 vs 2019 Australia



*Future Arrivals refers to all arrivals that are 'future' relative to the referenced booking date.
Source: Global Agency Pro

Update: Apr 22, 2020