

HTA COVID-19 UPDATE

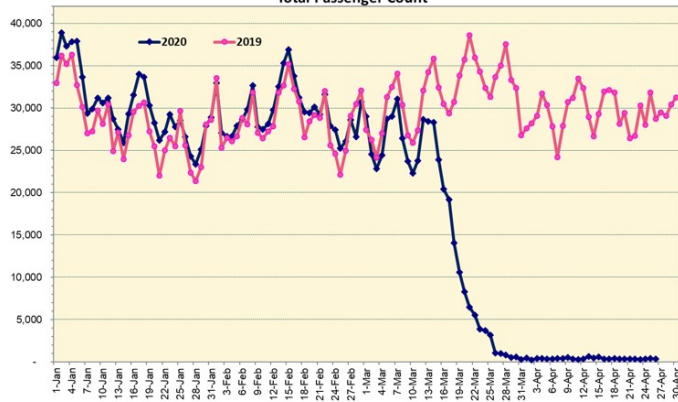
(Issued: 4/27/20 @ 4:00pm)

Novel Coronavirus in Hawaii

COVID-19 Positive* Cases

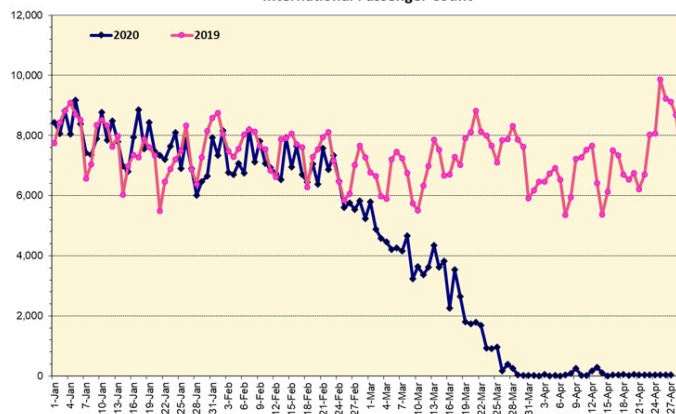
Cumulative totals as of 12:00 noon on April 27, 2020

Total Passenger Count



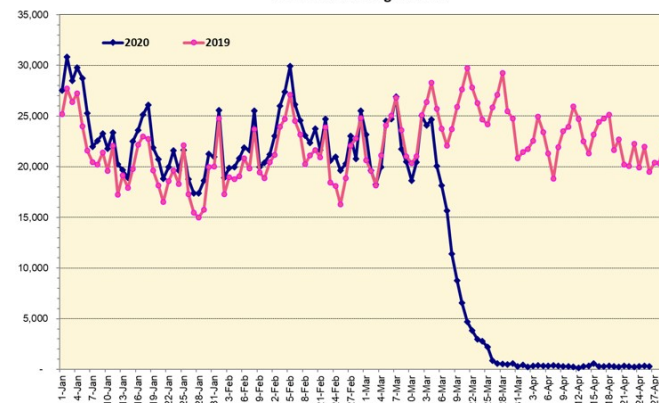
Note: Excludes flights from Canada

International Passenger Count



Note: Excludes flights from Canada

Domestic Passenger Count



Daily Passenger Count Table

04/26/2020	Domestic	International	Total
Oahu	275	35	310
Maui	19		19
Island of Hawaii	13		13
Kauai	0		0
State	307	35	342

4/27/20 Hawaii Passenger Arrivals by Air Update

Yesterday, 475 people arrived in Hawaii including 118 visitors and 193 residents. During this same time last year, nearly 30,000 passengers arrived in Hawaii daily, including residents and visitors. The state's mandatory 14-day self-quarantine started on March 26th for all passengers arriving in Hawaii from out of state. The quarantine order was expanded on April 1st to include interisland travelers. This table shows the number of people who arrived by air from out of state yesterday and does not include interisland travel.

	Kona	Maui	Oahu	Lihue	Total
Crew	6	6	77		89
Intended New Resident	2		29		31
Resident	9	11	173		193
Transit			44		44
Visitor	2	8	108		118
Grand Total	19	25	431	0	475
Flights	1	1	12	0	14

Statewide	Total
Total Cases	607 (1 new)

Released from Isolation† 493

Required Hospitalization 68

Deaths 16

BY COUNTY	Total
-----------	-------

Hawaii County	
---------------	--

Total Cases 70

Released from Isolation† 49

Required Hospitalization 1

Deaths 0

Honolulu County	
-----------------	--

Total Cases 396

Released from Isolation† 347

Required Hospitalization 53

Deaths 11

Kauai County	
--------------	--

Total Cases 21

Released from Isolation† 19

Required Hospitalization 1

Deaths 0

Maui County	
-------------	--

Total Cases 113

Released from Isolation† 78

Required Hospitalization 13

Deaths 5

HI Residents diagnosed outside of HI	7
County Pending	0

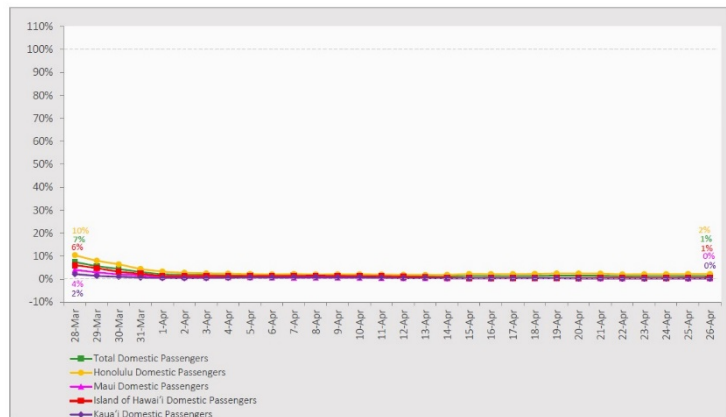
*includes presumptive and confirmed cases, data are preliminary and subject to change; note that CDC provides case counts according to states of residence.

†Isolation should be maintained until at least 3 days (72 hours) after resolution of fever and myalgia without the use of antipyretics OR at least 7 days have passed since symptom onset, whichever is longer.

7-Day Domestic by Island Moving Average Daily Passenger Volume

2020 Volume as Percentage of 2019 Volume

Through April 26, 2020



Source: HVCB analysis based on data from DBEDT
Note: Passenger volume figures include both visitors and residents.

Domestic by Island Month-to-Date and Year-to-Date Daily Passenger Volume

2020 Volume versus 2019 Volume

Through April 26, 2020

April 2020 (Month-to-Date through April 26)

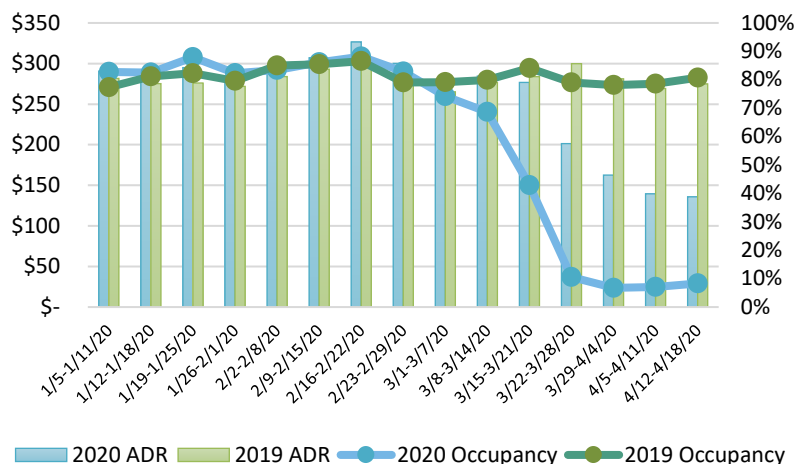
	2020	2019	Volume Change	Percent Change
Honolulu	6,940	314,421	-307,481	-97.8%
Maui County	624	157,816	-157,192	-99.6%
Island of Hawai'i	571	66,935	-66,364	-99.1%
Kauai	221	48,760	-48,539	-99.5%
Total	8,356	587,932	-579,576	-98.6%

2020 (Year-to-Date through April 26)

	2020	2019	Volume Change	Percent Change
Honolulu	970,840	1,385,444	-414,604	-29.9%
Maui County	441,466	645,440	-203,974	-31.6%
Island of Hawai'i	216,679	316,433	-99,754	-31.5%
Kauai	148,825	226,177	-77,352	-34.2%
Total	1,777,810	2,573,494	-795,684	-30.9%

Source: HVCB analysis based on data from DBEDT
Note: Passenger volume figures include both visitors and residents. Total includes other international passengers. 2020 includes one additional day due to Leap Year (February 29th, 2020).

State of Hawai'i Hotel Performance by Week - 2020 vs 2019



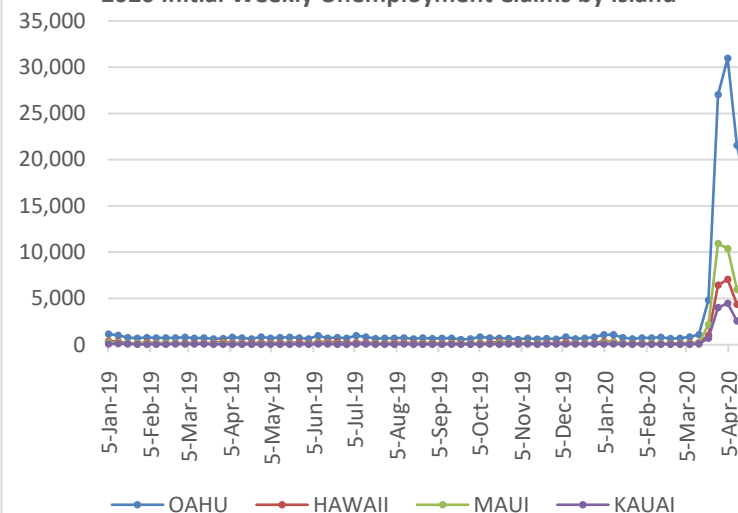
Source: STR, Inc. © Copyright 2020 Hawai'i Tourism Authority

Hawaii Hotel Performance Info:

For the week of April 12 – April 18, 2020

	Occupancy	ADR	RevPAR
State of Hawaii	8.3%	\$ 135.81	\$ 11.27
Oahu	8.0%	\$ 143.16	\$ 11.39
Maui County	8.2%	\$ 118.38	\$ 9.71
Kauai County	7.0%	\$ 158.00	\$ 11.06
Island of Hawaii	11.4%	\$ 119.63	\$ 13.66

2020 Initial Weekly Unemployment Claims by Island



Weekly Unemployment Initial Claims: April 18, 2020

State of Hawaii	26,599
C&C of Oahu	16,790
Hawaii County	3,373
Maui County	4,1500
Kauai County	2,046
Agent (filed in Hawaii against another state)	240

News Highlights

April 27, 2020

Honolulu Civil Beat: [Here's How The Coronavirus Has Transformed Hawaii](#)

Honolulu Star-Advertiser: [With tourism on furlough, Hawaii's whales are enjoying some needed rest from constant scrutiny](#)

Honolulu Civil Beat: [Ige Extends Stay-At-Home Order, Quarantines To May 31](#)

Honolulu Star-Advertiser: [COVID-19 pause gives Hawaii a chance to restore tourism balance](#)

Honolulu Star-Advertiser: [Hawaii's COVID-19 stay-at-home order and traveler quarantines extended to May 31](#)

Hawaii Tribune-Herald: [A shot in the arm: Council members push programs to help beleaguered businesses](#)

The Garden Island: [Mayor a national celebrity](#)

Big Island Video News: [VIDEO: Visitors To Hawaii To Undergo New Verification Process](#)

TIME: [This Japanese Island Lifted Its Coronavirus Lockdown Too Soon and Became a Warning to the World](#)

Helpful Resources

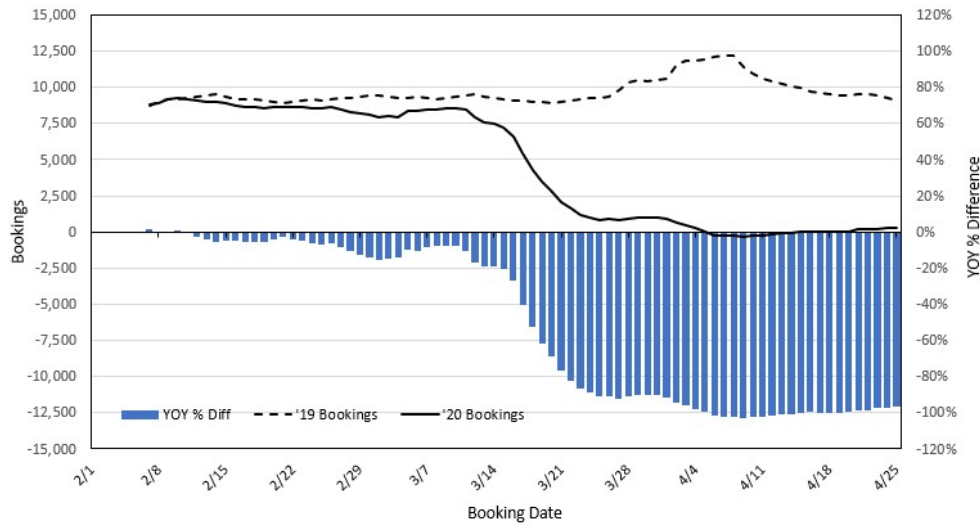
Department of Health
<https://hawaiiocovid19.com/>

Department of Health
<https://health.hawaii.gov/dacd/advisories/novel-coronavirus-2019>

Dept. of Business, Economic Development & Tourism
<https://dbedt.hawaii.gov/economic/covid19/>

Department of Transportation
<https://hidot.hawaii.gov/coronavirus/>

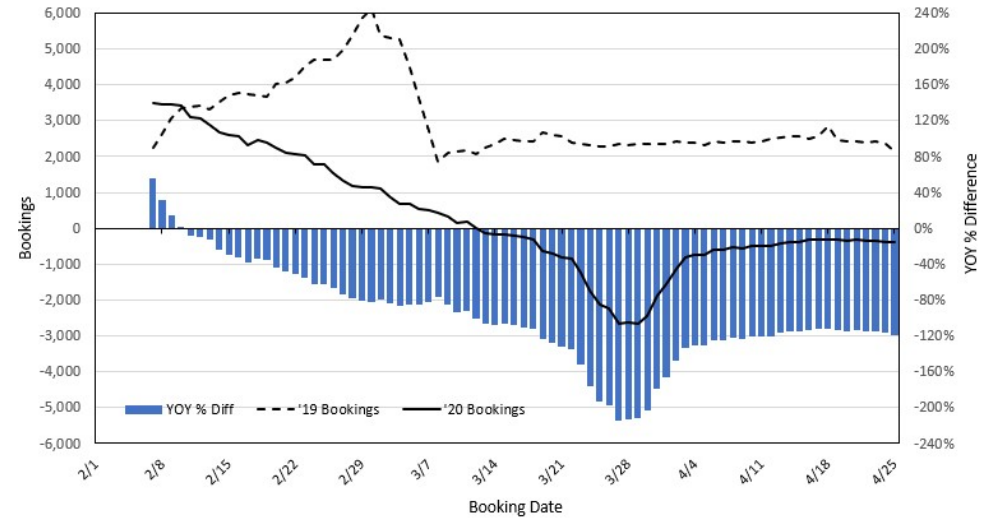
Travel Agency Bookings to Hawaii for Future Arrivals* Based on a 7-day Moving Average, 2020 vs 2019 U.S.



*Future Arrivals refers to all arrivals that are 'future' relative to the referenced booking date.
Source: Global Agency Pro

Update: Apr 25, 2020

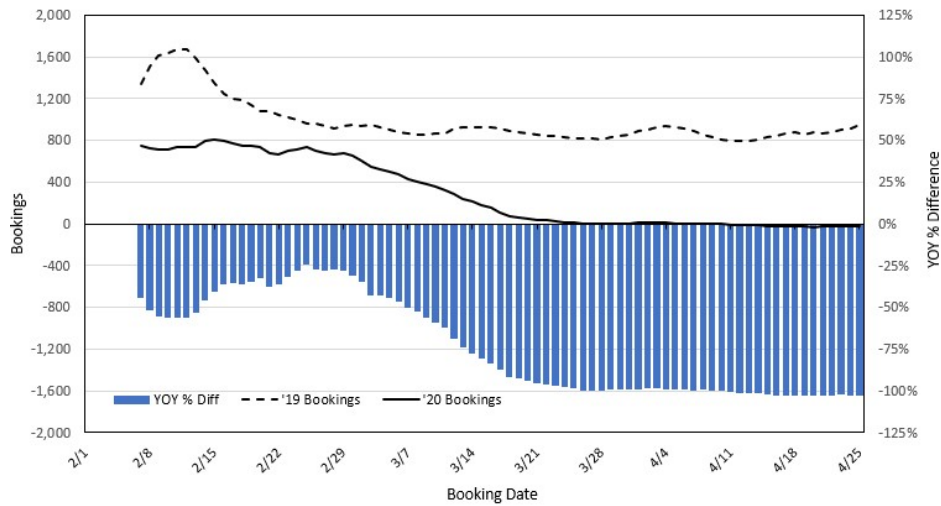
Travel Agency Bookings to Hawaii for Future Arrivals* Based on a 7-day Moving Average, 2020 vs 2019 Japan



*Future Arrivals refers to all arrivals that are 'future' relative to the referenced booking date.
Source: Global Agency Pro

Update: Apr 25, 2020

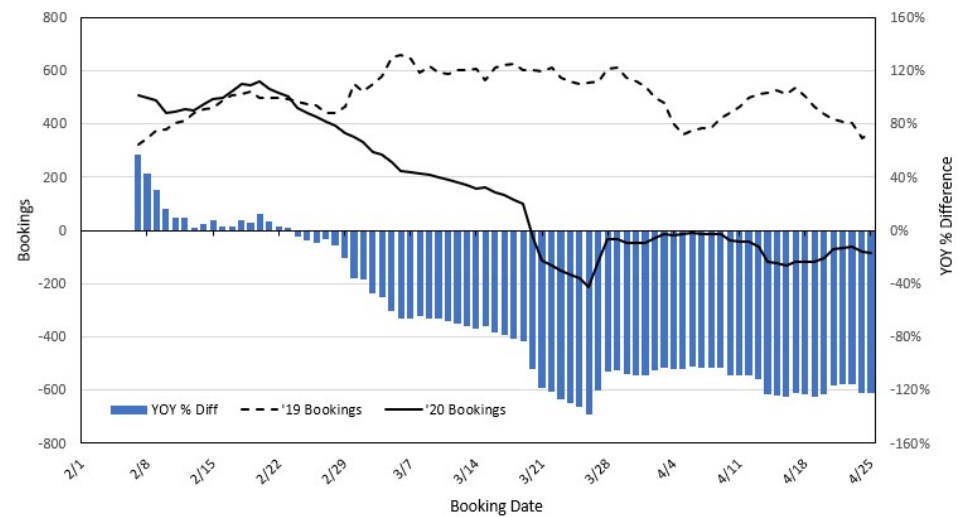
Travel Agency Bookings to Hawaii for Future Arrivals* Based on a 7-day Moving Average, 2020 vs 2019 Canada



*Future Arrivals refers to all arrivals that are 'future' relative to the referenced booking date.
Source: Global Agency Pro

Update: Apr 25, 2020

Travel Agency Bookings to Hawaii for Future Arrivals* Based on a 7-day Moving Average, 2020 vs 2019 Australia



*Future Arrivals refers to all arrivals that are 'future' relative to the referenced booking date.
Source: Global Agency Pro

Update: Apr 25, 2020