

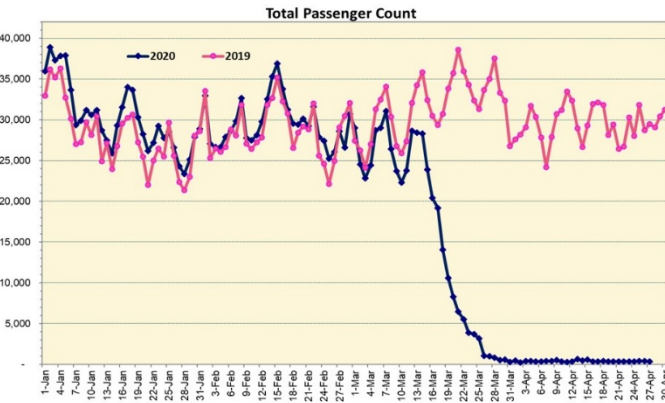
HTA COVID-19 UPDATE

(Issued: 4/28/20 @ 4:30pm)

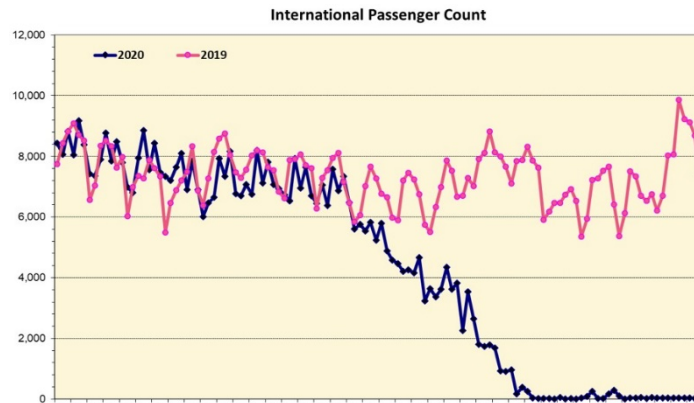
Novel Coronavirus in Hawaii

COVID-19 Positive* Cases

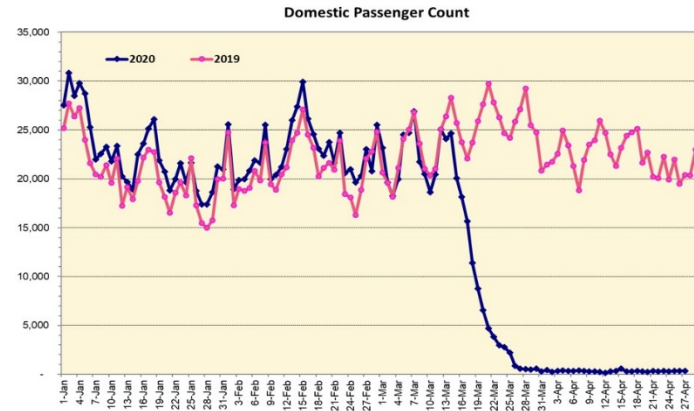
Cumulative totals as of 12:00 noon on April 28, 2020



Note: Excludes flights from Canada



Note: Excludes flights from Canada



Daily Passenger Count Table

04/27/2020	Domestic	International	Total
Oahu	280	36	316
Maui	47		47
Island of Hawaii	0		0
Kauai	0		0
State	327	36	363

4/28/20 Hawaii Passenger Arrivals by Air Update

Yesterday, 500 people arrived in Hawaii including 149 visitors and 160 residents. The state's mandatory 14-day self-quarantine started on March 26th for all passengers arriving in Hawaii from out of state. The quarantine order was expanded on April 1st to include interisland travelers. This table shows the number of people who arrived by air from out of state yesterday and does not include interisland travel.

	Kona	Maui	Oahu	Lihue	Total
Crew		2	96		98
Intended New Resident			53		53
Resident		29	131		160
Transit			40		40
Visitor		17	132		149
Grand Total	0	48	452	0	500
Flights	0	1	10	0	11

Market Impact Update: <https://www.dropbox.com/04/28/20 HTA COVID19 Update>

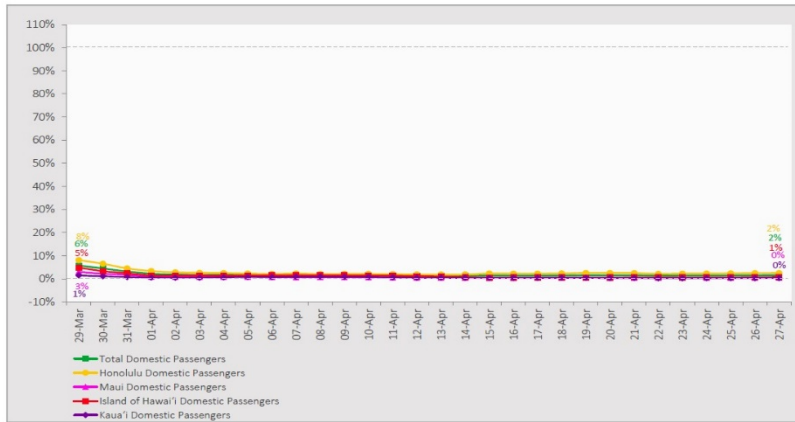
Statewide	Total
Total Cases	609 (2 new)
Released from Isolation†	505
Required Hospitalization	69
Deaths	16
BY COUNTY	Total
Hawaii County	
Total Cases	70
Released from Isolation†	51
Required Hospitalization	1
Deaths	0
Honolulu County	
Total Cases	396
Released from Isolation†	354
Required Hospitalization	53
Deaths	11
Kauai County	
Total Cases	21
Released from Isolation†	20
Required Hospitalization	1
Deaths	0
Maui County	
Total Cases	115
Released from Isolation†	80
Required Hospitalization	14
Deaths	5
HI Residents diagnosed outside of HI	7
County Pending	0

*includes presumptive and confirmed cases, data are preliminary and subject to change; note that CDC provides case counts according to states of residence.

†Isolation should be maintained until at least 3 days (72 hours) after resolution of fever and myalgia without the use of antipyretics OR at least 7 days have passed since symptom onset, whichever is longer.

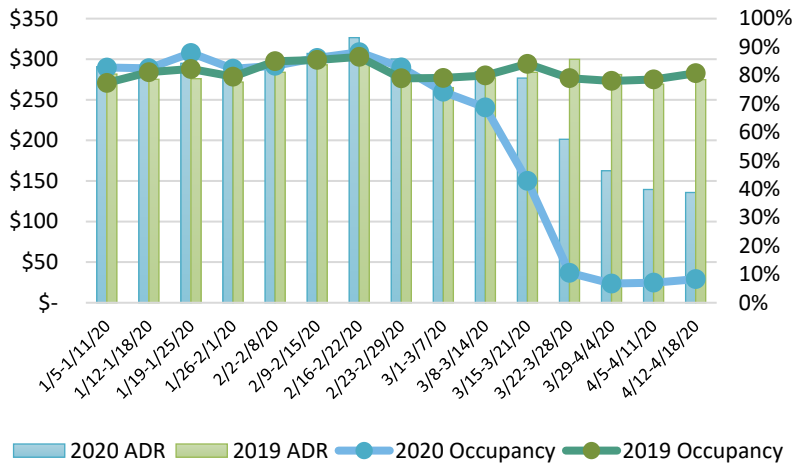
7-Day Domestic by Island Moving Average Daily Passenger Volume

2020 Volume as Percentage of 2019 Volume
Through April 27, 2020



Source: HVCB analysis based on data from DBEDT
Note: Passenger volume figures include both visitors and residents.

State of Hawai'i Hotel Performance by Week - 2020 vs 2019



Source: STR, Inc. © Copyright 2020 Hawai'i Tourism Authority

Hawaii Hotel Performance Info:

For the week of April 12 – April 18, 2020

	Occupancy	ADR	RevPAR
State of Hawaii	8.3%	\$ 135.81	\$ 11.27
Oahu	8.0%	\$ 143.16	\$ 11.39
Maui County	8.2%	\$ 118.38	\$ 9.71
Kauai County	7.0%	\$ 158.00	\$ 11.06
Island of Hawai'i	11.4%	\$ 119.63	\$ 13.66

Helpful Resources

Department of Health
<https://hawaiiocovid19.com/>

Department of Health

<https://health.hawaii.gov/docd/advisories/novel-coronavirus-2019>

Domestic by Island Month-to-Date and Year-to-Date Daily Passenger Volume

2020 Volume versus 2019 Volume
Through April 27, 2020

April 2020 (Month-to-Date through April 27)

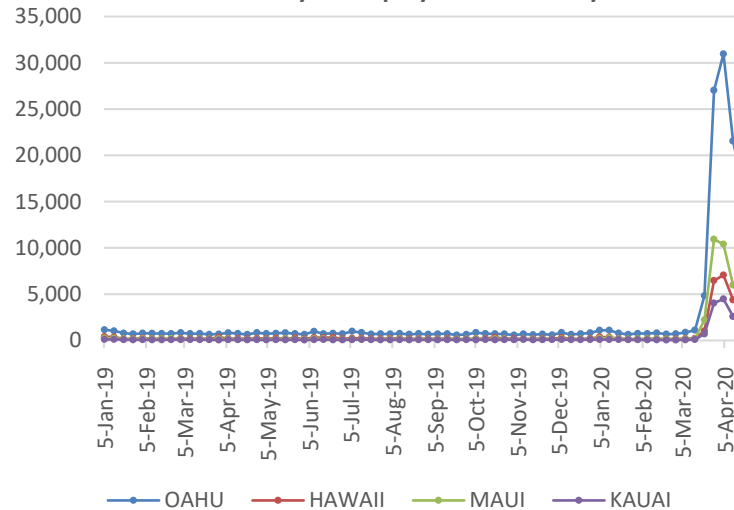
	2020	2019	Volume Change	Percent Change
Honolulu	7,338	325,336	-317,998	-97.7%
Maui County	671	163,986	-163,315	-99.6%
Island of Hawai'i	571	69,306	-68,735	-99.2%
Kaua'i	221	51,277	-51,056	-99.6%
Total	8,801	609,905	-601,104	-98.6%

2020 (Year-to-Date through April 27)

	2020	2019	Volume Change	Percent Change
Honolulu	971,238	1,396,359	-425,121	-30.4%
Maui County	441,513	651,610	-210,097	-32.2%
Island of Hawai'i	216,679	318,804	-102,125	-32.0%
Kaua'i	148,825	228,694	-79,869	-34.9%
Total	1,778,255	2,595,467	-817,212	-31.5%

Source: HVCB analysis based on data from DBEDT
Note: Passenger volume figures include both visitors and residents. Total includes other international passengers. 2020 includes one additional day due to Leap Year (February 29th, 2020).

2020 Initial Weekly Unemployment Claims by Island



Weekly Unemployment Initial Claims: April 18, 2020

State of Hawaii	26,599
C&C of Oahu	16,790
Hawaii County	3,373
Maui County	4,1500
Kauai County	2,046
Agent (filed in Hawaii against another state)	240

News Highlights

April 28, 2020

KHON2: [Florists can reopen May 1: relief after Gov. Ige rescinded Mother's Day exemption](#)

Hawaii News Now: [BWS votes to transfer Haiku Stairs to city to turn off-limits trail into paid attraction](#)

Hawaii Tribune-Herald: [Kohala distillery making hand sanitizer to help fight COVID-19](#)

Frolic: [Two-minute takeout: Ige's Lunchwagon & Catering](#)

Business Insider: [Hawaii is paying for tourists to fly home to places like Guam and Denver, showing the deepening rift between locals and visitors in popular vacation spots during the coronavirus lockdown](#)

Los Angeles Times: [Hawaii won't reopen anytime soon. Coronavirus stay-at-home order extended through May](#)

Travel Pulse: [Survey Uncovers Optimism for COVID-19 Destination Recovery](#)

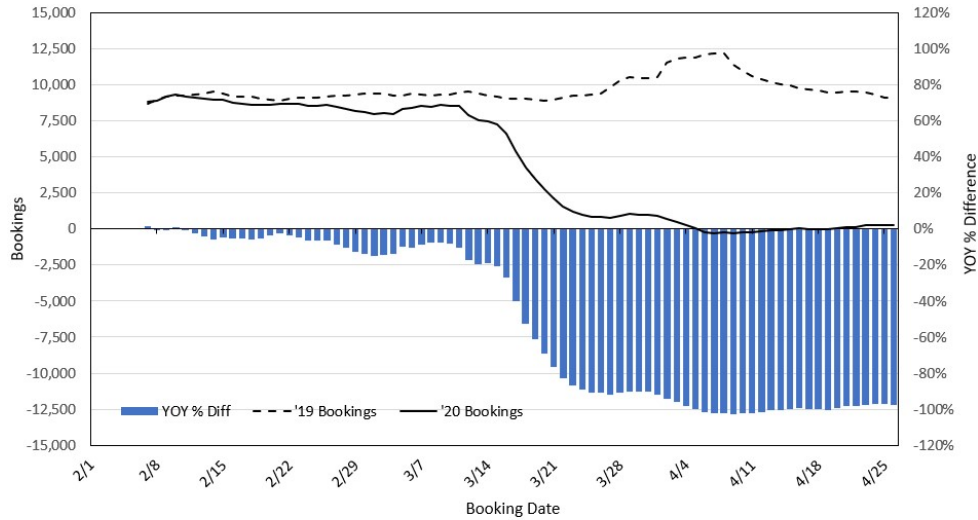
Frommer's: [Aloha Also Means Goodbye: Hawaii Extends Stay-at-Home Order](#)

Skift: [The Technology That Can Make Events Possible in a Pandemic](#)

Dept. of Business, Economic Development & Tourism
<https://dbedt.hawaii.gov/economic/covid19/>

Department of Transportation
<https://hidot.hawaii.gov/coronavirus/>

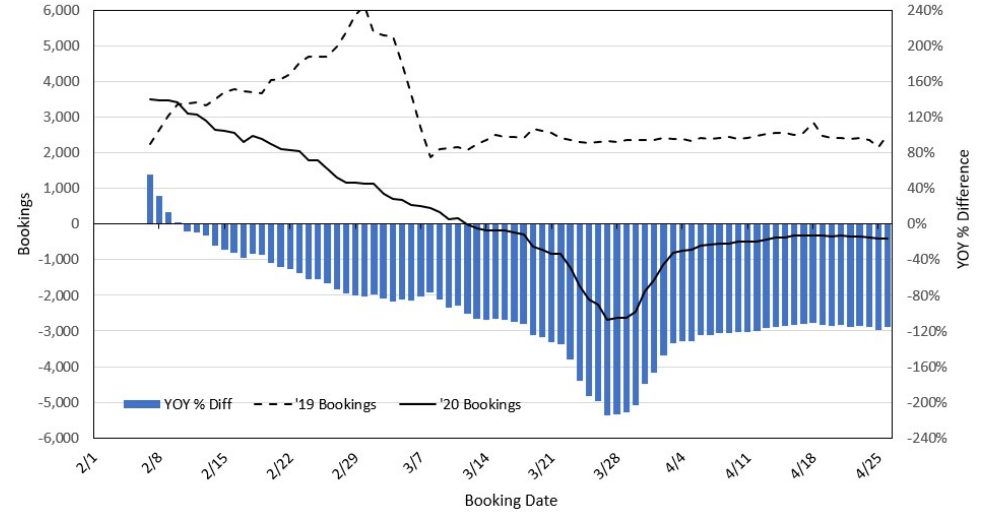
Travel Agency Bookings to Hawaii for Future Arrivals* Based on a 7-day Moving Average, 2020 vs 2019 U.S.



*Future Arrivals refers to all arrivals that are 'future' relative to the referenced booking date.
Source: Global Agency Pro

Update: Apr 26, 2020

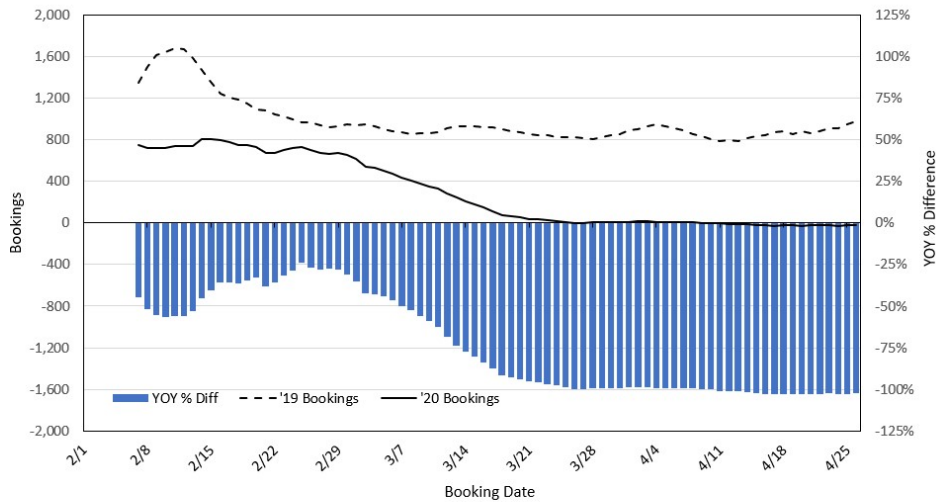
Travel Agency Bookings to Hawaii for Future Arrivals* Based on a 7-day Moving Average, 2020 vs 2019 Japan



*Future Arrivals refers to all arrivals that are 'future' relative to the referenced booking date.
Source: Global Agency Pro

Update: Apr 26, 2020

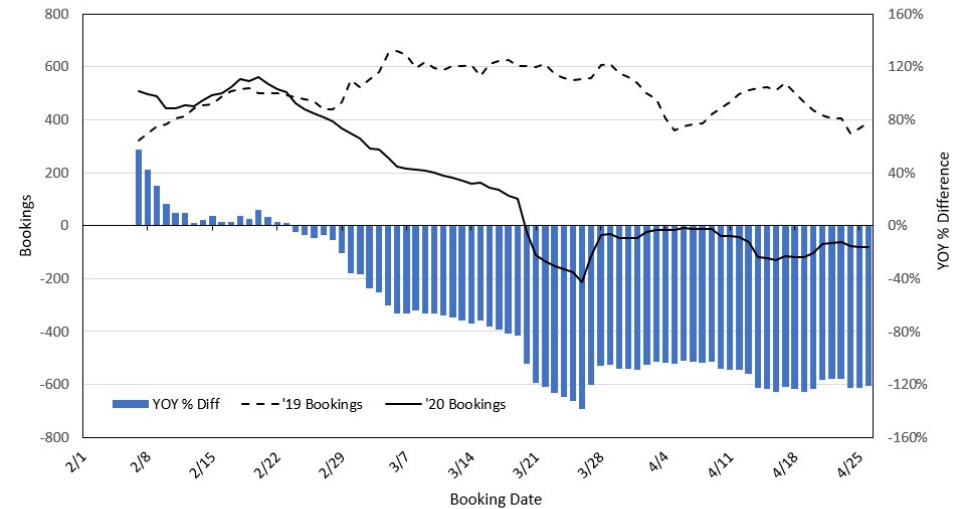
Travel Agency Bookings to Hawaii for Future Arrivals* Based on a 7-day Moving Average, 2020 vs 2019 Canada



*Future Arrivals refers to all arrivals that are 'future' relative to the referenced booking date.
Source: Global Agency Pro

Update: Apr 26, 2020

Travel Agency Bookings to Hawaii for Future Arrivals* Based on a 7-day Moving Average, 2020 vs 2019 Australia



*Future Arrivals refers to all arrivals that are 'future' relative to the referenced booking date.
Source: Global Agency Pro

Update: Apr 26, 2020