

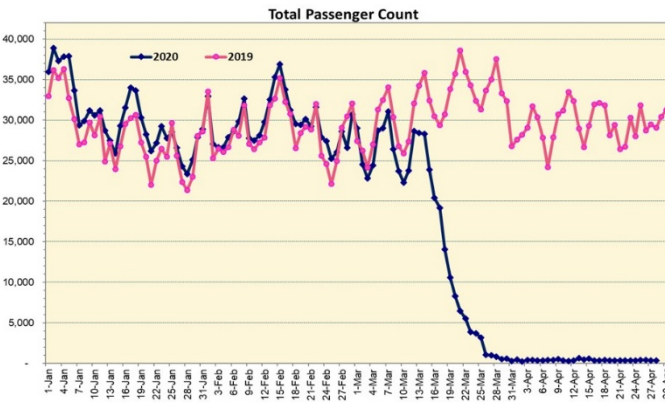
HTA COVID-19 UPDATE

(Issued: 4/29/20 @ 3:30pm)

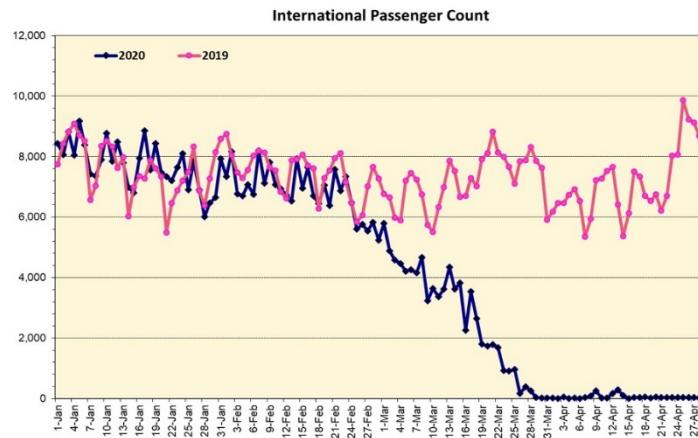
Novel Coronavirus in Hawaii

COVID-19 Positive* Cases

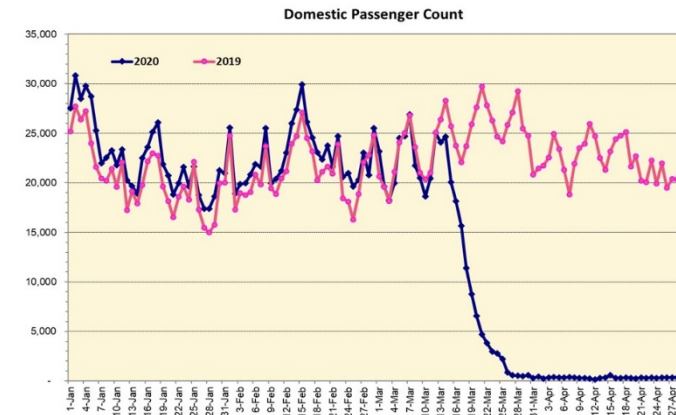
Cumulative totals as of 12:00 noon on April 29, 2020



Note: Excludes flights from Canada



Note: Excludes flights from Canada



Daily Passenger Count Table

04/28/2020	Domestic	International	Total
Oahu	306	20	326
Maui	0		0
Island of Hawaii	31		31
Kauai	4		4
State	341	20	361

4/29/20 Hawaii Passenger Arrivals by Air Update

Yesterday, 494 people arrived in Hawaii including 121 visitors and 177 residents. During this same time last year, nearly 30,000 passengers arrived in Hawaii daily, including residents and visitors. The state's mandatory 14-day self-quarantine started on March 26th for all passengers arriving in Hawaii from out of state. The quarantine order was expanded on April 1st to include interisland travelers. This table shows the number of people who arrived by air from out of state yesterday and does not include interisland travel.

	Kona	Maui	Oahu	Lihue	Total
Crew	4		96		100
Intended New Resident	6		57		63
Resident	17		160		177
Transit			33		33
Visitor	8		109	4	121
Grand Total	35	0	455	4	494
Flights	1	0	11	1	13

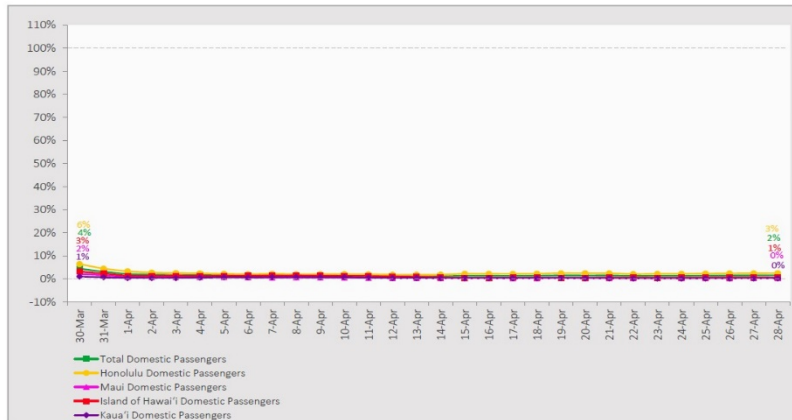
Statewide	Total
Total Cases	613 (4 new)
Released from Isolation†	516
Required Hospitalization	69
Deaths	16
BY COUNTY	Total
Hawaii County	
Total Cases	70
Released from Isolation†	53
Required Hospitalization	1
Deaths	0
Honolulu County	
Total Cases	399
Released from Isolation†	360
Required Hospitalization	53
Deaths	11
Kauai County	
Total Cases	21
Released from Isolation†	20
Required Hospitalization	1
Deaths	0
Maui County	
Total Cases	115
Released from Isolation†	83
Required Hospitalization	14
Deaths	5
HI Residents diagnosed outside of HI	8
County Pending	0

*includes presumptive and confirmed cases, data are preliminary and subject to change; note that CDC provides case counts according to states of residence.

†Isolation should be maintained until at least 3 days (72 hours) after resolution of fever and myalgia without the use of antipyretics OR at least 7 days have passed since symptom onset, whichever is longer.

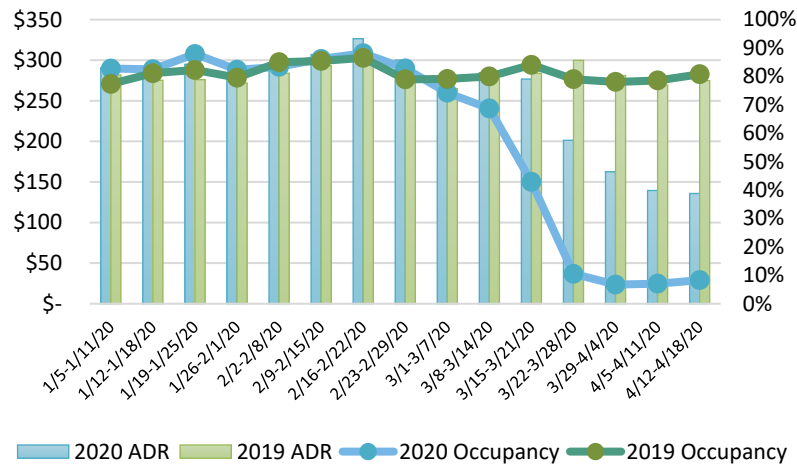
7-Day Domestic by Island Moving Average Daily Passenger Volume

2020 Volume as Percentage of 2019 Volume
Through April 28, 2020



Source: HVCB analysis based on data from DBEDT
Note: Passenger volume figures include both visitors and residents.

State of Hawai'i Hotel Performance by Week - 2020 vs 2019



Source: STR, Inc. © Copyright 2020 Hawai'i Tourism Authority

Hawaii Hotel Performance Info: For the week of April 12 – April 18, 2020

	Occupancy	ADR	RevPAR
State of Hawaii	8.3%	\$ 135.81	\$ 11.27
Oahu	8.0%	\$ 143.16	\$ 11.39
Maui County	8.2%	\$ 118.38	\$ 9.71
Kauai County	7.0%	\$ 158.00	\$ 11.06
Island of Hawai'i	11.4%	\$ 119.63	\$ 13.66

Helpful Resources

Department of Health
<https://hawaiicovid19.com/>

Department of Health

<https://health.hawaii.gov/docd/advisories/novel-coronavirus-2019>

Domestic by Island Month-to-Date and Year-to-Date Daily Passenger Volume

2020 Volume versus 2019 Volume
Through April 28, 2020

April 2020 (Month-to-Date through April 28)

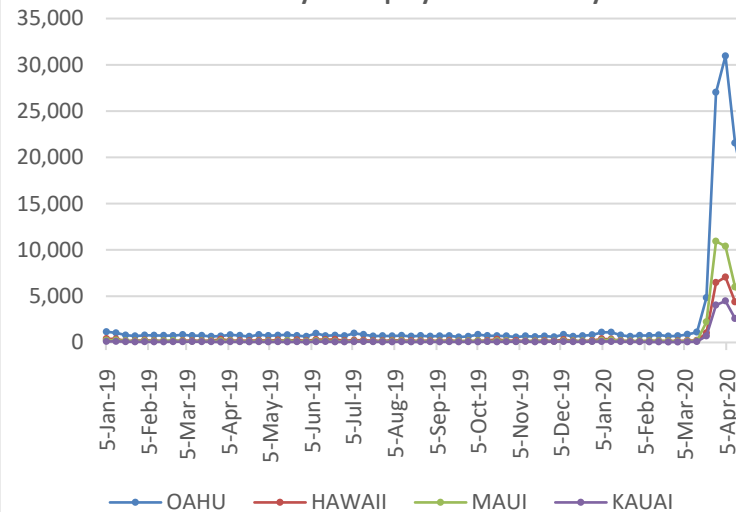
	2020	2019	Volume Change	Percent Change
Honolulu	7,644	337,014	-329,370	-97.7%
Maui County	671	168,736	-168,065	-99.6%
Island of Hawai'i	602	70,826	-70,224	-99.2%
Kaua'i	225	52,825	-52,600	-99.6%
Total	9,142	629,401	-620,259	-98.5%

2020 (Year-to-Date through April 28)

	2020	2019	Volume Change	Percent Change
Honolulu	971,544	1,408,037	-436,493	-31.0%
Maui County	441,513	656,360	-214,847	-32.7%
Island of Hawai'i	216,710	320,324	-103,614	-32.3%
Kaua'i	148,829	230,242	-81,413	-35.4%
Total	1,778,596	2,614,963	-836,367	-32.0%

Source: HVCB analysis based on data from DBEDT
Note: Passenger volume figures include both visitors and residents. Total includes other international passengers. 2020 includes one additional day due to Leap Year (February 29th, 2020).

2020 Initial Weekly Unemployment Claims by Island



Weekly Unemployment Initial Claims: April 18, 2020

State of Hawaii	26,599
C&C of Oahu	16,790
Hawaii County	3,373
Maui County	4,1500
Kauai County	2,046
Agent (filed in Hawaii against another state)	240

News Highlights

April 29, 2020

Hawaii News Now: [Some worry workers won't return as the state plans for reopening](#)

Honolulu Star-Advertiser: [Visitors keep flying to Hawaii despite mandatory quarantine, including 149 on Monday](#)

Maui Now: [Highlights From Senate COVID-19 Meeting](#)

Hawaii Tribune-Herald: [Kim eyes reopening some businesses as long as safety measures are in place](#)

Honolulu Civil Beat: [Mass Tourism Is The 1,200-Pound Gorilla In The Room](#)

Maui Now: [World Surf League Postpones Events Through June](#)

The Garden Island: [The team reopening Kauai](#)

The Garden Island: [Economic reboot](#)

Skift: [Hotel Operators Prepare for a Peak Summer Travel Season That May Never Check In](#)

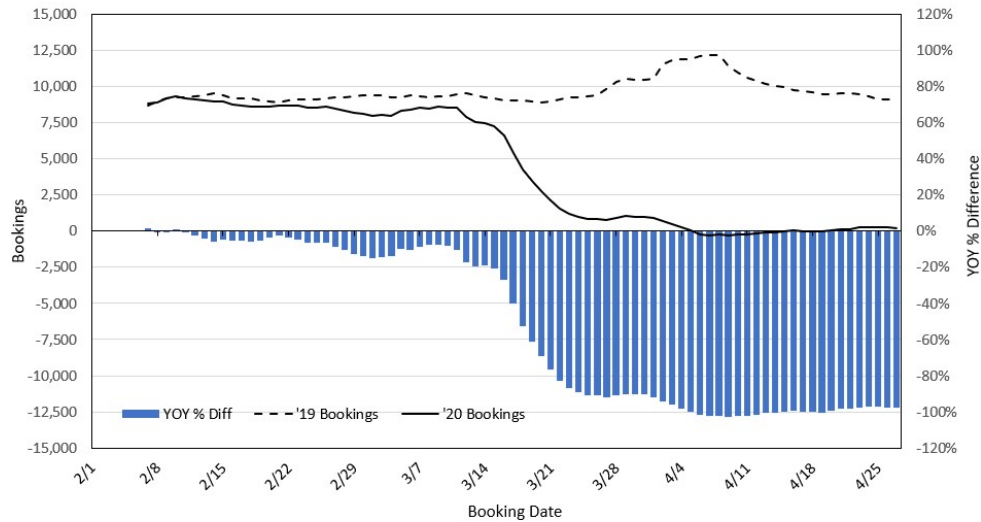
Travel Pulse: [European Travel Restrictions Could Last Longer](#)

Skift: [Competing Event Industry Players Ditch Rivalries to Fight Covid-19](#)

Dept. of Business, Economic Development & Tourism
<https://dbedt.hawaii.gov/economic/covid19/>

Department of Transportation
<https://hidot.hawaii.gov/coronavirus/>

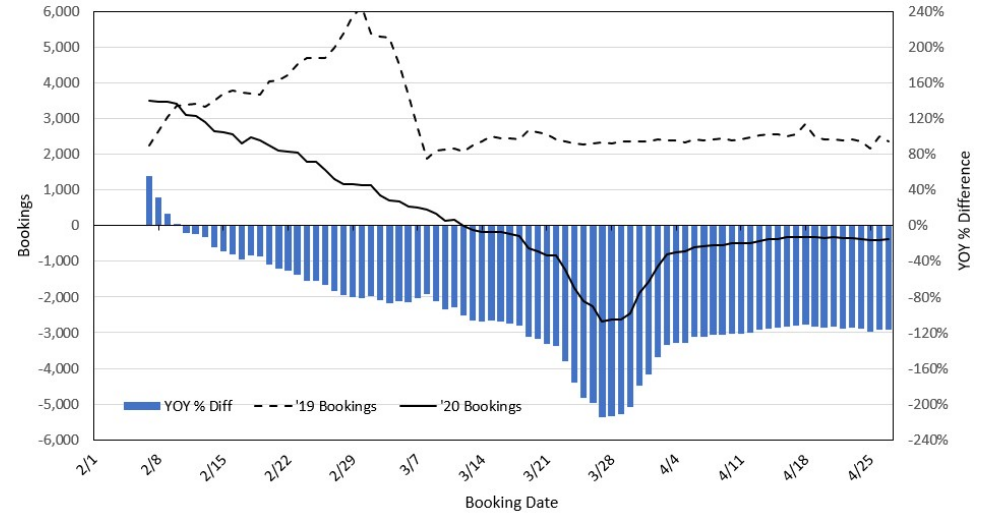
Travel Agency Bookings to Hawaii for Future Arrivals* Based on a 7-day Moving Average, 2020 vs 2019 U.S.



*Future Arrivals refers to all arrivals that are 'future' relative to the referenced booking date.
Source: Global Agency Pro

Update: Apr 27, 2020

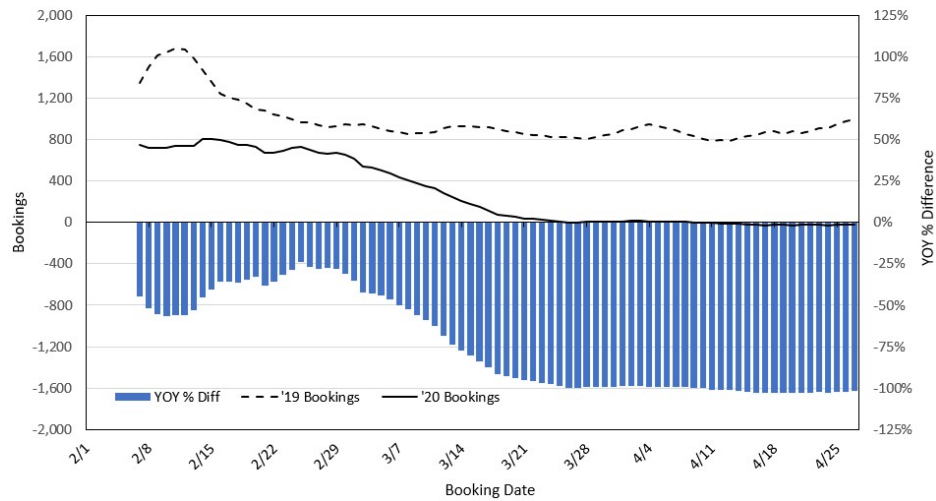
Travel Agency Bookings to Hawaii for Future Arrivals* Based on a 7-day Moving Average, 2020 vs 2019 Japan



*Future Arrivals refers to all arrivals that are 'future' relative to the referenced booking date.
Source: Global Agency Pro

Update: Apr 27, 2020

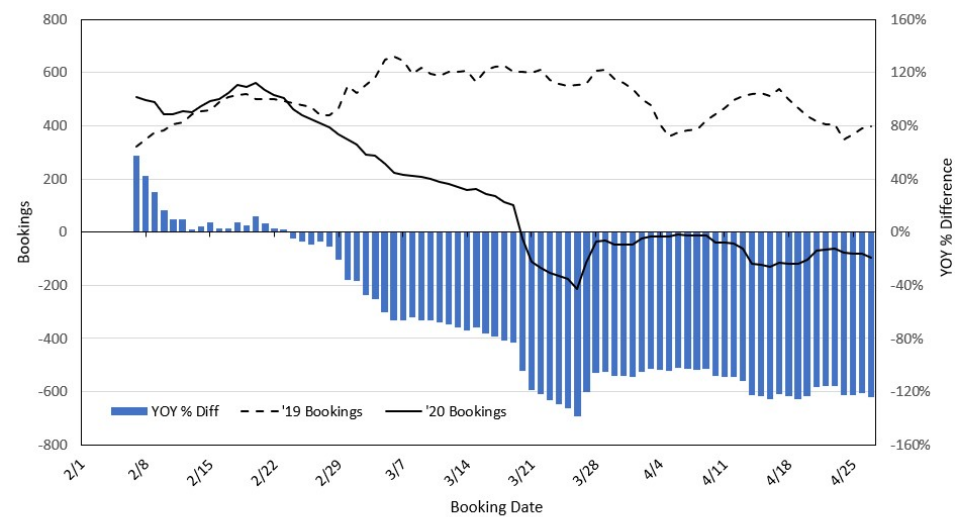
Travel Agency Bookings to Hawaii for Future Arrivals* Based on a 7-day Moving Average, 2020 vs 2019 Canada



*Future Arrivals refers to all arrivals that are 'future' relative to the referenced booking date.
Source: Global Agency Pro

Update: Apr 27, 2020

Travel Agency Bookings to Hawaii for Future Arrivals* Based on a 7-day Moving Average, 2020 vs 2019 Australia



*Future Arrivals refers to all arrivals that are 'future' relative to the referenced booking date.
Source: Global Agency Pro

Update: Apr 27, 2020