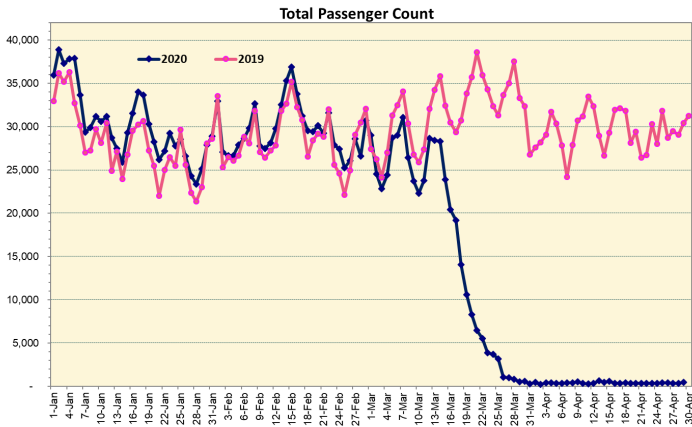
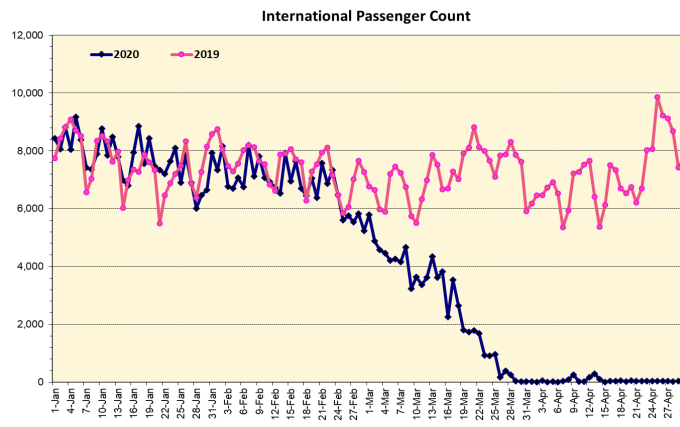


# HTA COVID-19 UPDATE

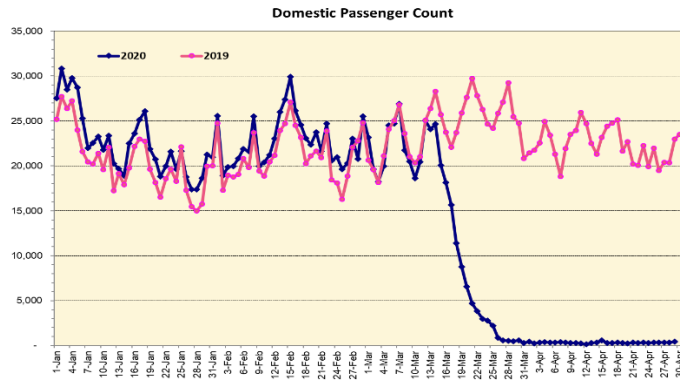
(Issued: 4/30/20 @ 5:00pm)



Note: Excludes flights from Canada



Note: Excludes flights from Canada



## Daily Passenger Count Table

04/29/2020	Domestic	International	Total
Oahu	332	40	372
Maui	66		66
Island of Hawaii	0		0
Kauai	21		21
State	419	40	459

## 4/30/20 Hawaii Passenger Arrivals by Air Update

Today marks five weeks since the state's mandatory 14-day self-quarantine started for all passengers arriving in Hawaii from out of state. Yesterday, 590 people arrived in Hawaii including 187 visitors and 220 residents. The quarantine order was expanded on April 1st to include interisland travelers. This table shows the number of people who arrived by air from out of state yesterday and does not include interisland travel.

	Kona	Maui	Oahu	Lihue	Total
Crew		2	95	2	99
Intended New Resident			62	2	64
Resident		46	162	12	220
Transit			20		20
Visitor		20	160	7	187
<b>Grand Total</b>	<b>0</b>	<b>68</b>	<b>499</b>	<b>23</b>	<b>590</b>
Flights	<b>0</b>	<b>1</b>	<b>12</b>	<b>1</b>	<b>14</b>

Market Impact Update: <https://www.dropbox.com/04/30/20 HTA COVID19 Update>

## Novel Coronavirus in Hawaii

COVID-19 Positive\* Cases

Cumulative totals as of 12:00 noon on April 30, 2020

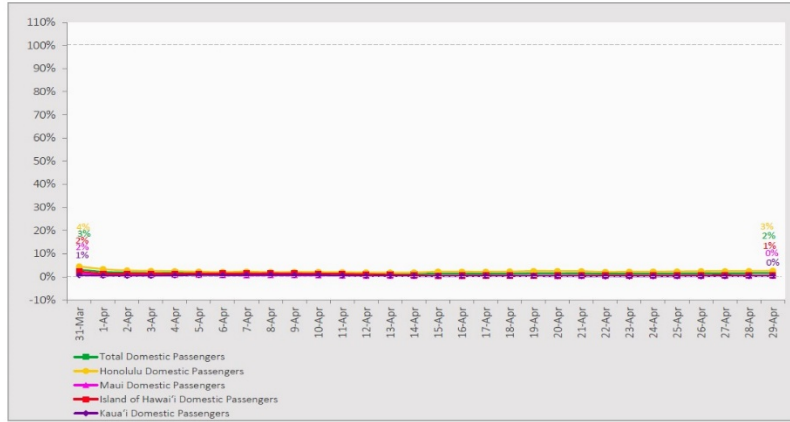
Statewide	Total
Total Cases	<b>618 (5 new)</b>
Released from Isolation†	526
Required Hospitalization	70
Deaths	16
BY COUNTY	Total
Hawaii County	
Total Cases	73
Released from Isolation†	58
Required Hospitalization	1
Deaths	0
Honolulu County	
Total Cases	399
Released from Isolation†	364
Required Hospitalization	53
Deaths	11
Kauai County	
Total Cases	21
Released from Isolation†	20
Required Hospitalization	1
Deaths	0
Maui County	
Total Cases	116
Released from Isolation†	84
Required Hospitalization	14
Deaths	5
HI Residents diagnosed outside of HI	9
County Pending	0

\*includes presumptive and confirmed cases, data are preliminary and subject to change; note that CDC provides case counts according to states of residence.

†Isolation should be maintained until at least 3 days (72 hours) after resolution of fever and myalgia without the use of antipyretics OR at least 7 days have passed since symptom onset, whichever is longer.

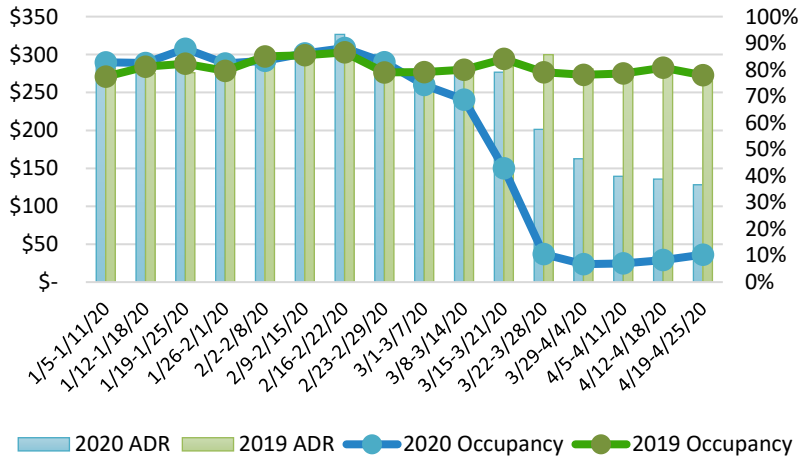
### 7-Day Domestic by Island Moving Average Daily Passenger Volume

2020 Volume as Percentage of 2019 Volume  
Through April 29, 2020



Source: HVCB analysis based on data from DBEDT  
Note: Passenger volume figures include both visitors and residents.

### State of Hawai'i Hotel Performance by Week - 2020 vs 2019



Source: STR, Inc. © Copyright 2020 Hawai'i Tourism Authority

### Hawaii Hotel Performance Info:

For the week of April 19 – April 25, 2020

	Occupancy	ADR	RevPAR
State of Hawaii	10.3%	\$ 128.33	\$ 13.25
Oahu	9.8%	\$ 142.66	\$ 13.95
Maui County	10.0%	\$ 115.51	\$ 11.52
Kauai County	5.5%	\$ 125.91	\$ 6.87
Island of Hawaii	18.7%	\$ 96.79	\$ 18.11

#### Helpful Resources

Department of Health  
<https://hawaiicovid19.com/>

#### Department of Health

<https://health.hawaii.gov/docd/advisories/novel-coronavirus-2019>

### Domestic by Island Month-to-Date and Year-to-Date Daily Passenger Volume

2020 Volume versus 2019 Volume  
Through April 29, 2020

April 2020 (Month-to-Date through April 29)

	2020	2019	Volume Change	Percent Change
Honolulu	7,644	337,014	-329,370	-97.7%
Maui County	671	168,736	-168,065	-99.6%
Island of Hawai'i	602	70,826	-70,224	-99.2%
Kaua'i	225	52,825	-52,600	-99.6%
Total	9,142	629,401	-620,259	-98.5%

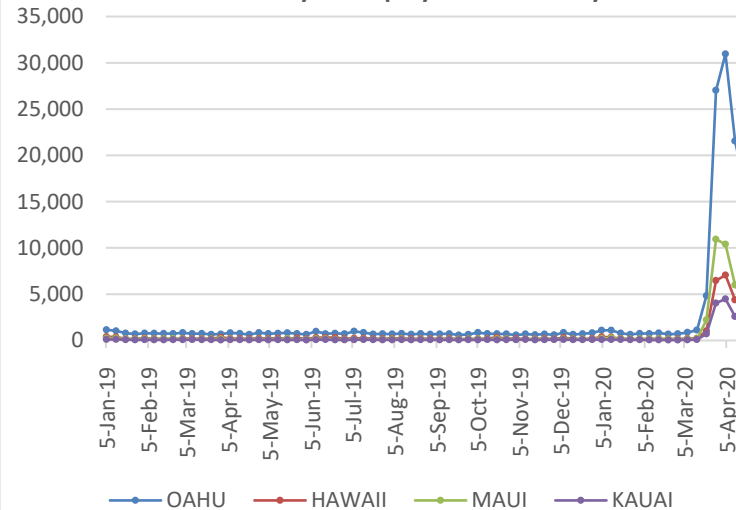
2020 (Year-to-Date through April 29)

	2020	2019	Volume Change	Percent Change
Honolulu	971,876	1,419,962	-448,086	-31.6%
Maui County	441,579	661,234	-219,655	-33.2%
Island of Hawai'i	216,710	322,243	-105,533	-32.7%
Kaua'i	148,850	231,896	-83,046	-35.8%
Total	1,779,015	2,635,335	-856,320	-32.5%

Source: HVCB analysis based on data from DBEDT

Note: Passenger volume figures include both visitors and residents. Total includes other international passengers. 2020 includes one additional day due to Leap Year (February 29th, 2020).

### 2020 Initial Weekly Unemployment Claims by Island



### Weekly Unemployment Initial Claims: April 18, 2020

State of Hawaii	26,599
C&C of Oahu	16,790
Hawaii County	3,373
Maui County	4,1500
Kauai County	2,046
Agent (filed in Hawaii against another state)	240

## News Highlights

April 30, 2020

KITV4: [Hawaii airports continue to see hundreds of people arriving to the state](#)

Hawaii News Now: [Are Hawaii's quarantine rules suited for more visitors? Ige thinks so](#)

Honolulu Civil Beat: [COVID-19 Curve 'Flattened' But Tourism Won't Open Soon](#)

The Garden Island: [Restructuring the emergency rules](#)

Travel Weekly: [Hawaii extends stay-at-home order through May 31](#)

West Hawaii Today: [Hawaii businesses brace for impact of stay-at-home extension](#)

West Hawaii Today: [Kona Brewers Festival donates funds despite event being called off this year](#)

Hawaii Tribune-Herald: [State's success in mitigating the spread of coronavirus could result in easing of restrictions](#)

Fodor's Travel: [Coronavirus Has Revealed How Bad Hawaii's Tourism Problem Really Is](#)

Travel Weekly: [Airlines pressured to require passengers to wear masks](#)

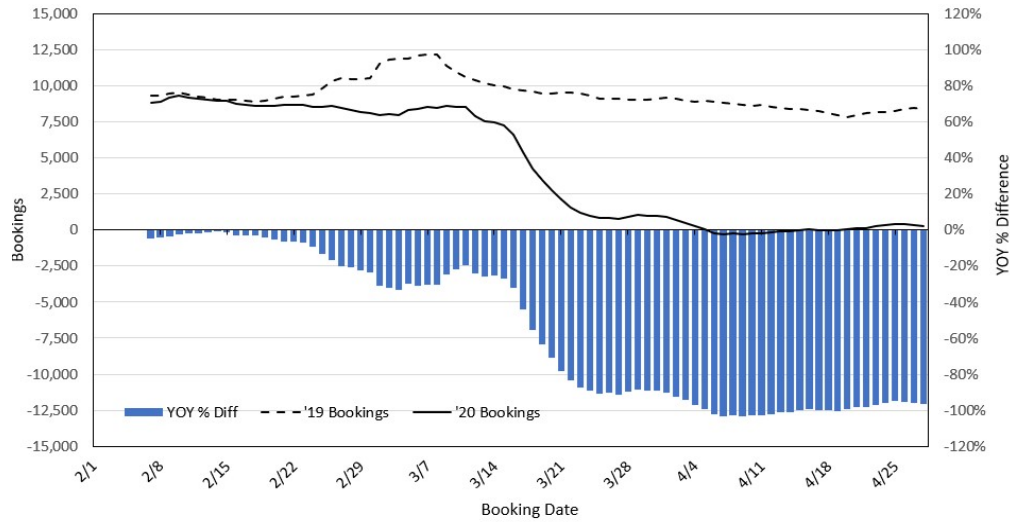
#### Department of Transportation

<https://hidot.hawaii.gov/coronavirus/>

#### Dept. of Business, Economic Development & Tourism

<https://dbedt.hawaii.gov/economic/covid19/>

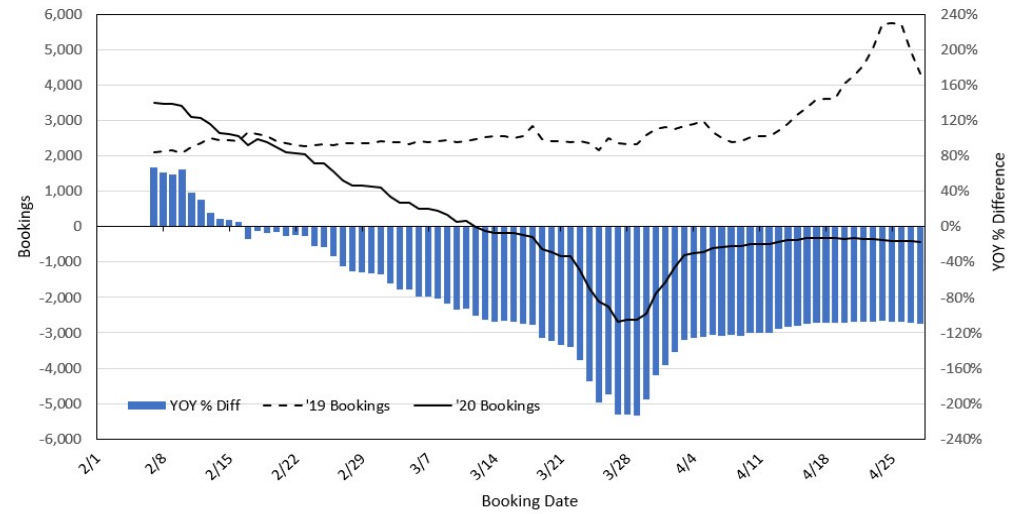
### Travel Agency Bookings to Hawaii for Future Arrivals\* Based on a 7-day Moving Average, 2020 vs 2019 U.S.



\*Future Arrivals refers to all arrivals that are 'future' relative to the referenced booking date.  
Source: Global Agency Pro

Update: Apr 28, 2020

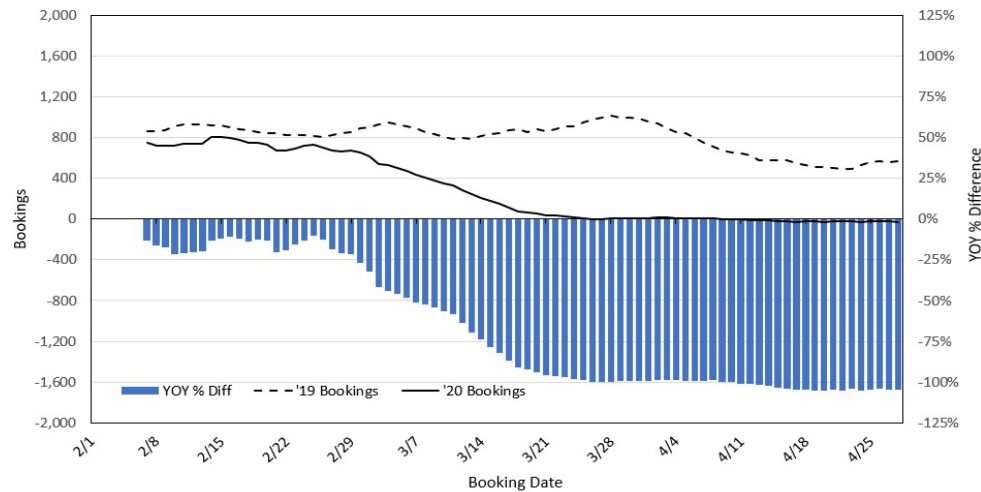
### Travel Agency Bookings to Hawaii for Future Arrivals\* Based on a 7-day Moving Average, 2020 vs 2019 Japan



\*Future Arrivals refers to all arrivals that are 'future' relative to the referenced booking date.  
Source: Global Agency Pro

Update: Apr 28, 2020

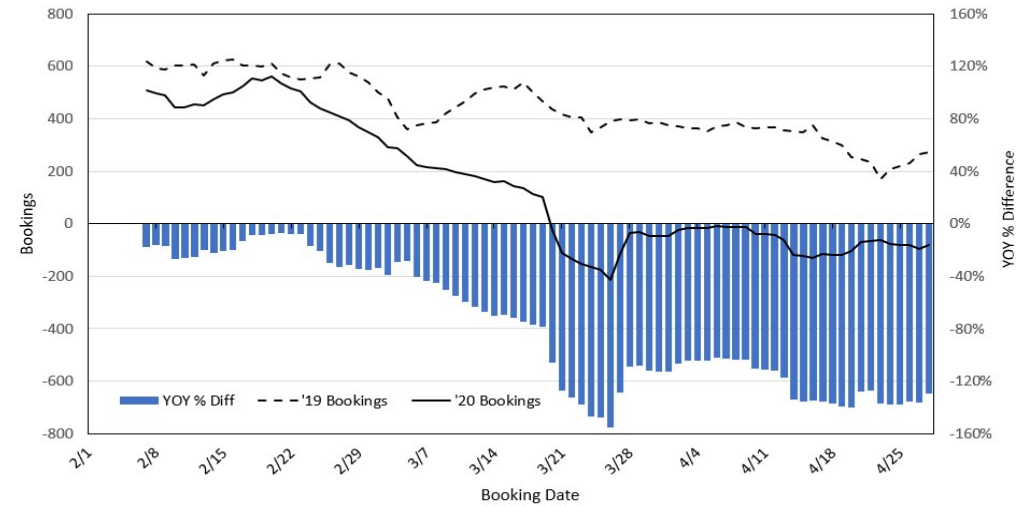
### Travel Agency Bookings to Hawaii for Future Arrivals\* Based on a 7-day Moving Average, 2020 vs 2019 Canada



\*Future Arrivals refers to all arrivals that are 'future' relative to the referenced booking date.  
Source: Global Agency Pro

Update: Apr 28, 2020

### Travel Agency Bookings to Hawaii for Future Arrivals\* Based on a 7-day Moving Average, 2020 vs 2019 Australia



\*Future Arrivals refers to all arrivals that are 'future' relative to the referenced booking date.  
Source: Global Agency Pro

Update: Apr 28, 2020