

HTA COVID-19 UPDATE

(Issued: 5/1/20 @ 3:30pm)

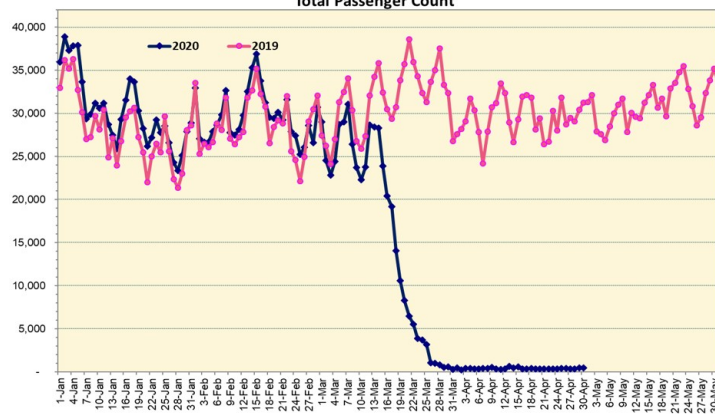
Novel Coronavirus in Hawaii

COVID-19 Positive* Cases

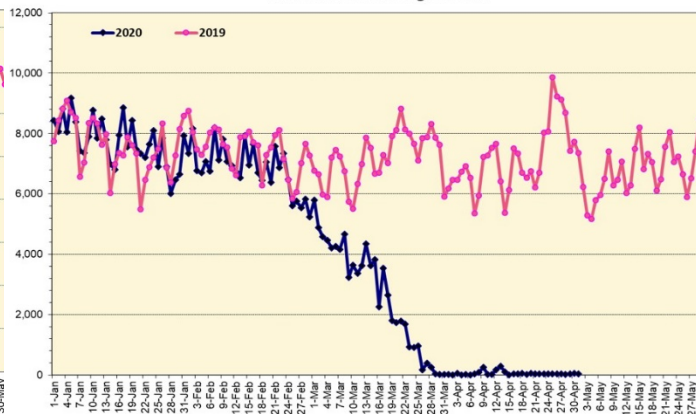
Cumulative totals as of 12:00 noon on May 1, 2020

Total Passenger Count

International Passenger Count

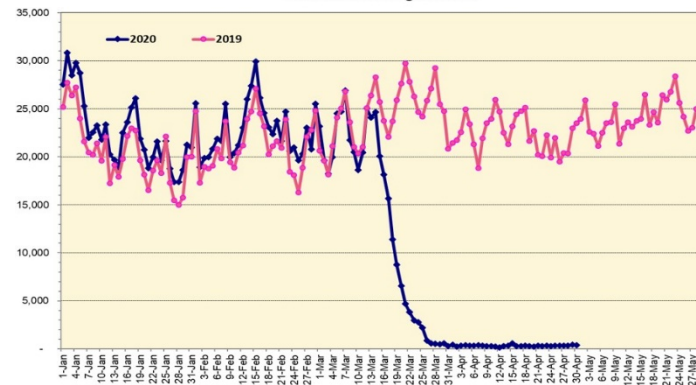


Note: Excludes flights from Canada



Note: Excludes flights from Canada

Domestic Passenger Count



Daily Passenger Count Table

04/30/2020	Domestic	International	Total
Oahu	355	52	407
Maui	0		0
Island of Hawaii	44		44
Kauai	0		0
State	399	52	451

05/01/20 Hawaii Passenger Arrivals by Air Update

Yesterday, 640 people arrived in Hawaii including 166 visitors and 196 residents. Yesterday marked five weeks since the state's mandatory 14-day self-quarantine started for all passengers arriving in Hawaii from out of state. The quarantine order was expanded on April 1st to include interisland travelers. This table shows the number of people who arrived by air from out of state yesterday and does not include interisland travel.

	Kona	Maui	Oahu	Lihue	Total
Crew	13		119	2	134
Intended New Resident	20		69		89
Resident	12		184		196
Transit	1		54		55
Visitor	12		154		166
Grand Total	58	0	580	2	640
Flights	2	0	11	1	14

Statewide	Total
Total Cases	619 (1 new)
Released from Isolation†	532
Required Hospitalization	72
Deaths	16
BY COUNTY	Total
Hawaii County	
Total Cases	73
Released from Isolation†	60
Required Hospitalization	1
Deaths	0
Honolulu County	
Total Cases	400
Released from Isolation†	368
Required Hospitalization	53
Deaths	11
Kauai County	
Total Cases	21
Released from Isolation†	20
Required Hospitalization	1
Deaths	0
Maui County	
Total Cases	116
Released from Isolation†	84
Required Hospitalization	16
Deaths	5
HI Residents diagnosed outside of HI	9
County Pending	0

*includes presumptive and confirmed cases, data are preliminary and subject to change; note that CDC provides case counts according to states of residence.

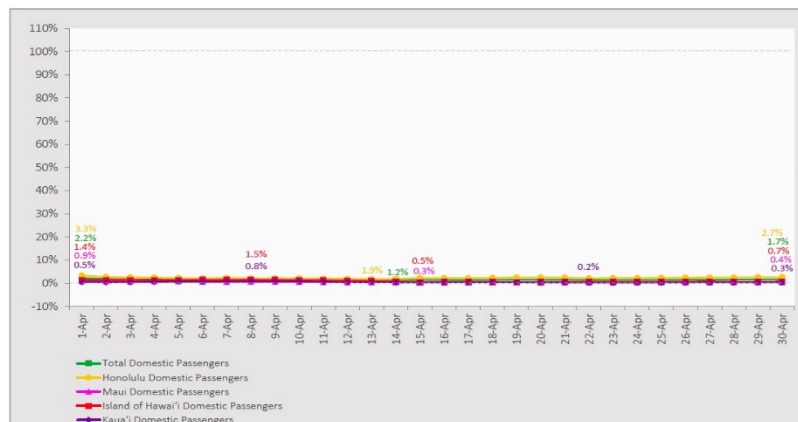
†Isolation should be maintained until at least 3 days (72 hours) after resolution of fever and myalgia without the use of antipyretics OR at least 7 days have passed since symptom onset, whichever is longer.

Market Impact Update: <https://www.sharepoint.com/05/01/20 HTA COVID19 Update>

7-Day Domestic by Island Moving Average Daily Passenger Volume

2020 Volume as Percentage of 2019 Volume

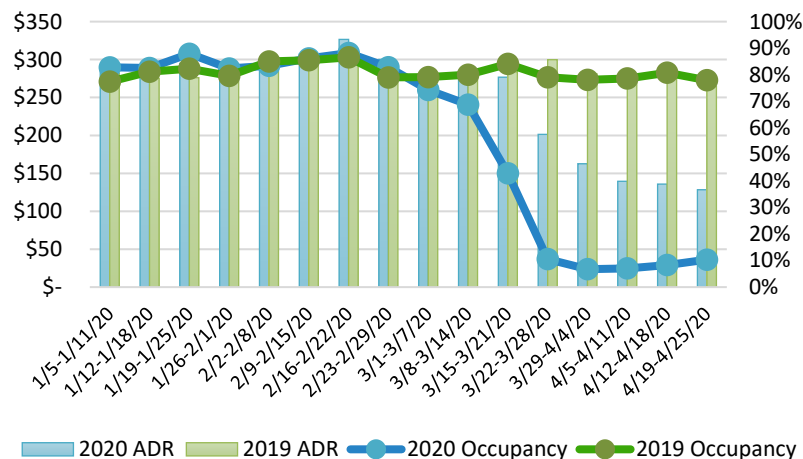
Through April 30, 2020



Source: HVCB analysis based on data from DBEDT

Note: Passenger volume figures include both visitors and residents.

State of Hawai'i Hotel Performance by Week - 2020 vs 2019



Source: STR, Inc. © Copyright 2020 Hawai'i Tourism Authority

Hawaii Hotel Performance Info:

For the week of April 19 – April 25, 2020

	Occupancy	ADR	RevPAR
State of Hawaii	10.3%	\$ 128.33	\$ 13.25
Oahu	9.8%	\$ 142.66	\$ 13.95
Maui County	10.0%	\$ 115.51	\$ 11.52
Kauai County	5.5%	\$ 125.91	\$ 6.87
Island of Hawai'i	18.7%	\$ 96.79	\$ 18.11

Domestic by Island Month-to-Date and Year-to-Date Daily Passenger Volume

2020 Volume versus 2019 Volume

Through April 30, 2020

April 2020 (Month-to-Date through April 30)

	2020	2019	Volume Change	Percent Change
Honolulu	8,331	360,239	-351,908	-97.7%
Maui County	738	179,077	-178,339	-99.6%
Island of Hawai'i	646	74,658	-74,012	-99.1%
Kauai	242	56,161	-55,919	-99.6%
Total	9,957	670,135	-660,178	-98.5%

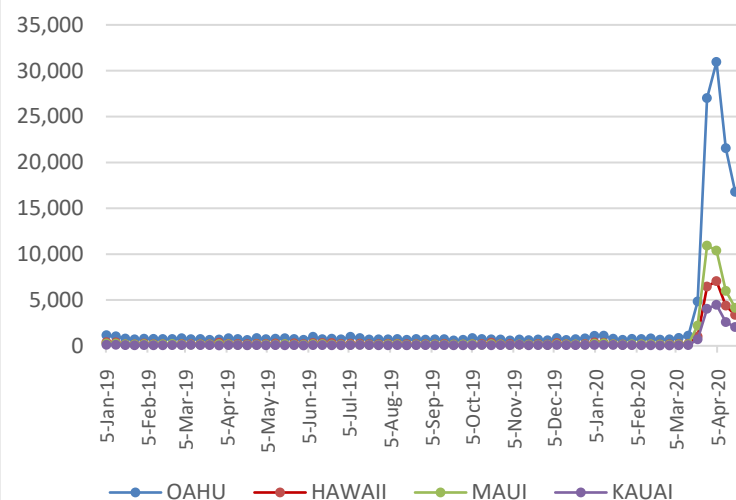
2020 (Year-to-Date through April 30)

	2020	2019	Volume Change	Percent Change
Honolulu	972,231	1,431,262	-459,031	-32.1%
Maui County	441,580	666,701	-225,121	-33.8%
Island of Hawai'i	216,754	324,156	-107,402	-33.1%
Kauai	148,846	233,578	-84,732	-36.3%
Total	1,779,411	2,655,697	-876,286	-33.0%

Source: HVCB analysis based on data from DBEDT

Note: Passenger volume figures include both visitors and residents. Total includes other international passengers. 2020 includes one additional day due to Leap Year (February 29th, 2020).

2020 Initial Weekly Unemployment Claims by Island



Weekly Unemployment Initial Claims: April 25, 2020

State of Hawaii	22,496
C&C of Oahu	14,327
Hawaii County	2,797
Maui County	3,579
Kauai County	1,566
Agent (filed in Hawaii against another state)	227

News Highlights

May 1, 2020

Honolulu Star-Advertiser: [Hawaii tourism plunges; officials tackle reentry plan](#)

Honolulu Civil Beat: [Hawaii Senate Committee: Why Can't We Enforce The Travel Quarantine?](#)

Honolulu Star-Advertiser: [Plans in the works to market Hawaii as the 'safest place in the world'](#)

West Hawaii Today: [My Turn: Make Hawaii a destination for business](#)

The Garden Island: [Small businesses slowly readying for reopen](#)

West Hawaii Today: [County mulls extra property tax on the rich: Revenues sought as COVID-19 cripples budget](#)

Hawaii Tribune-Herald: [Airports official criticized over quarantine enforcement failures](#)

West Hawaii Today: [West Hawaii lawmakers set blueprint for reopening](#)

Los Angeles Times: [After coronavirus: Your next hotel stay may look like this](#)

Skift: [When You Don't Have Any Domestic Tourism to Rely On: Maldives as a Pandemic Case Study](#)

Helpful Resources

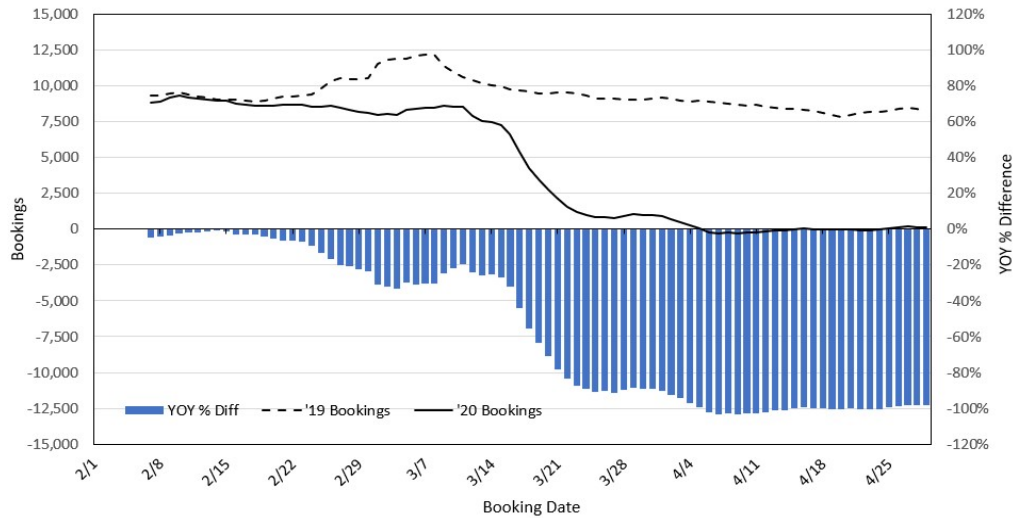
Department of Health
<https://hawaiicovid19.com/>

Department of Health
<https://health.hawaii.gov/docd/advisories/novel-coronavirus-2019>

Dept. of Business, Economic Development & Tourism
<https://dbedt.hawaii.gov/economic/covid19/>

Department of Transportation
<https://hidot.hawaii.gov/coronavirus/>

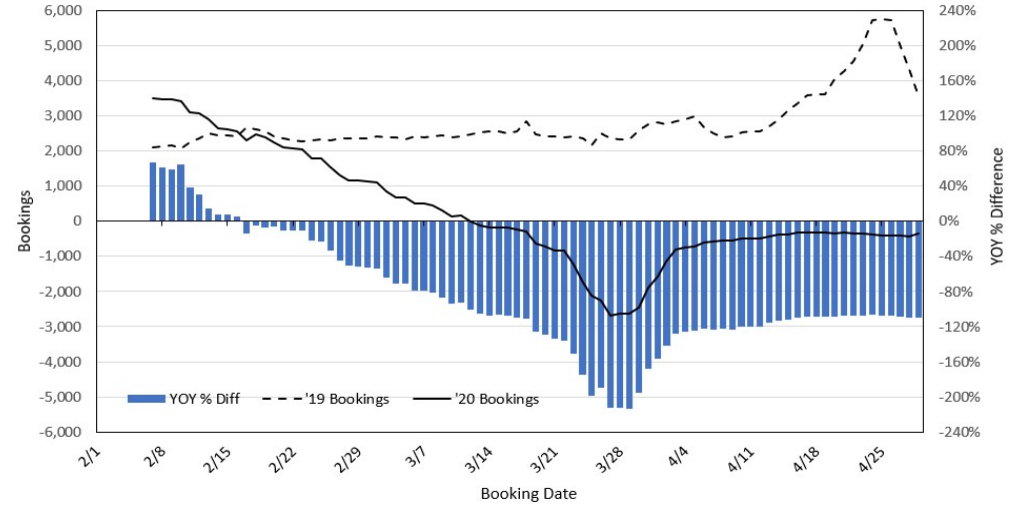
Travel Agency Bookings to Hawaii for Future Arrivals* Based on a 7-day Moving Average, 2020 vs 2019 U.S.



*Future Arrivals refers to all arrivals that are 'future' relative to the referenced booking date.
Source: Global Agency Pro

Update: Apr 29, 2020

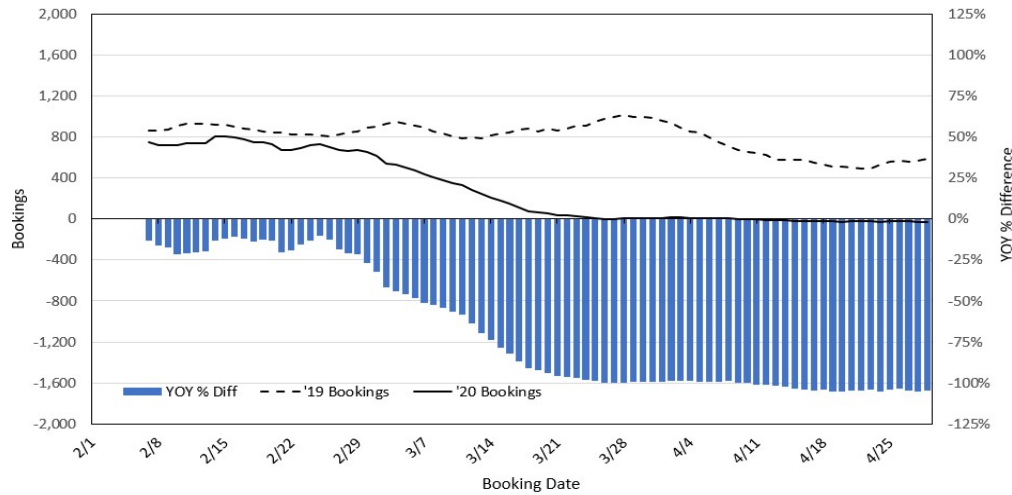
Travel Agency Bookings to Hawaii for Future Arrivals* Based on a 7-day Moving Average, 2020 vs 2019 Japan



*Future Arrivals refers to all arrivals that are 'future' relative to the referenced booking date.
Source: Global Agency Pro

Update: Apr 29, 2020

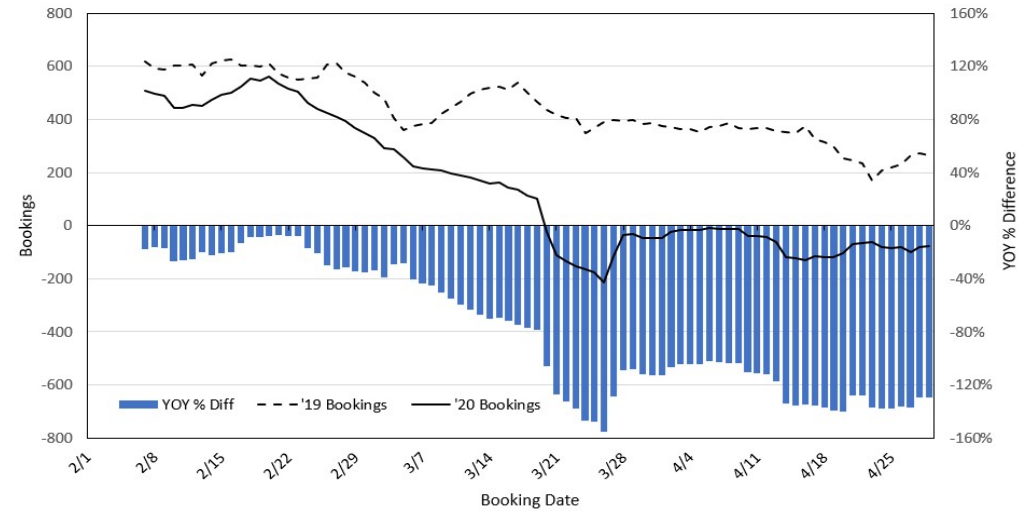
Travel Agency Bookings to Hawaii for Future Arrivals* Based on a 7-day Moving Average, 2020 vs 2019 Canada



*Future Arrivals refers to all arrivals that are 'future' relative to the referenced booking date.
Source: Global Agency Pro

Update: Apr 29, 2020

Travel Agency Bookings to Hawaii for Future Arrivals* Based on a 7-day Moving Average, 2020 vs 2019 Australia



*Future Arrivals refers to all arrivals that are 'future' relative to the referenced booking date.
Source: Global Agency Pro

Update: Apr 29, 2020