

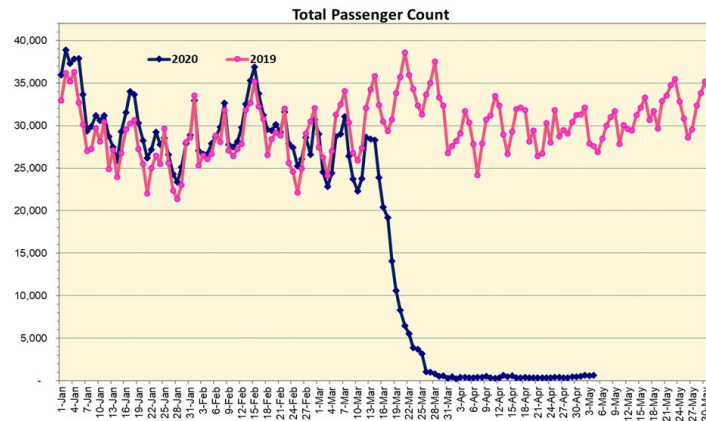
HTA COVID-19 UPDATE

(Issued: 5/5/20 @ 3:00pm)

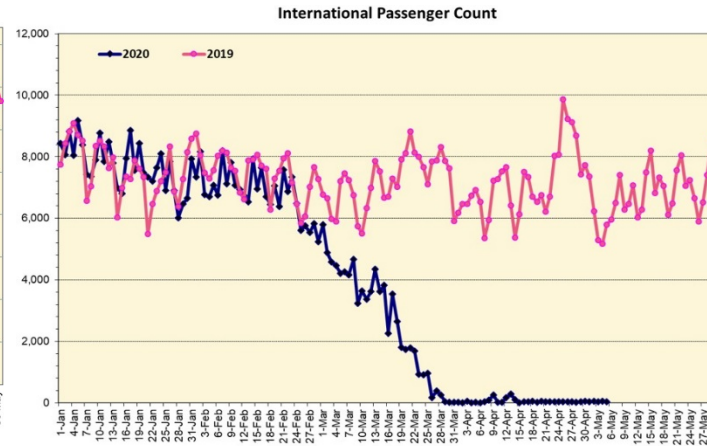
Novel Coronavirus in Hawaii

COVID-19 Positive* Cases

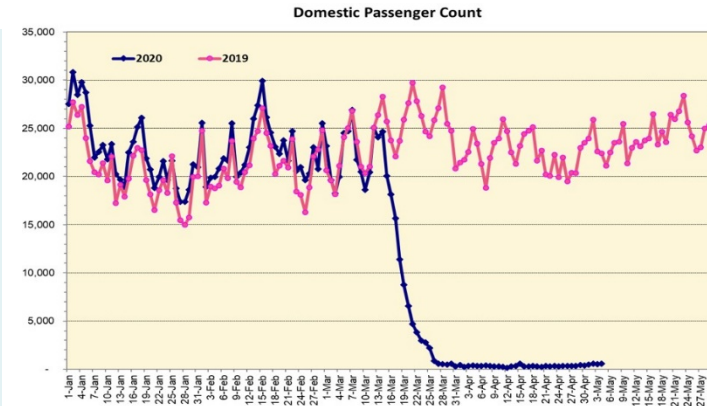
Cumulative totals as of 12:00 noon on May 5, 2020



Note: Excludes flights from Canada



Note: Excludes flights from Canada



Daily Passenger Count Table

05/04/2020	Domestic	International	Total
Oahu	523	50	573
Maui	71		71
Island of Hawaii	1		1
Kauai	0		0
State	595	50	645

05/05/20 Hawaii Passenger Arrivals by Air Update

Yesterday, 845 people arrived in Hawaii including 246 visitors and 310 residents. During this same time last year, nearly 30,000 passengers arrived in Hawaii daily, including residents and visitors. The state's mandatory 14-day self-quarantine started on March 26th for all passengers arriving in Hawaii from out of state. The quarantine order was expanded on April 1st to include interisland travelers. This table shows the number of people who arrived by air from out of state yesterday and does not include interisland travel.

	Kona	Maui	Oahu	Lihue	Total
Crew		13	130		143
Intended New Resident		3	84		87
Resident		41	269		310
Transit			59		59
Visitor	1	25	220		246
Grand Total	1	82	762	0	845
Flights	1	4	11	0	16

Statewide	Total
Total Cases	625 (4 new)
Released from Isolation†	551
Required Hospitalization	73
Deaths	17
BY COUNTY	Total
Hawaii County	
Total Cases	74
Released from Isolation†	62
Required Hospitalization	1
Deaths	0
Honolulu County	
Total Cases	404
Released from Isolation†	377
Required Hospitalization	53
Deaths	11
Kauai County	
Total Cases	21
Released from Isolation†	20
Required Hospitalization	1
Deaths	0
Maui County	
Total Cases	116
Released from Isolation†	92
Required Hospitalization	17
Deaths	6
HI Residents diagnosed outside of HI	10
County Pending	0

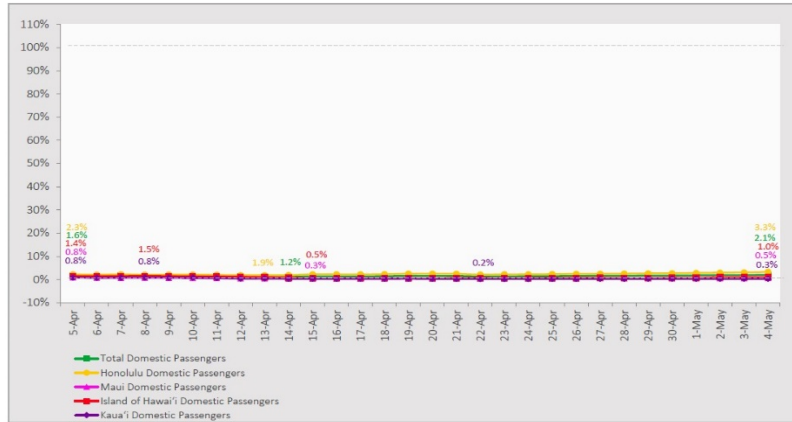
*includes presumptive and confirmed cases, data are preliminary and subject to change; note that CDC provides case counts according to states of residence.

†Isolation should be maintained until at least 3 days (72 hours) after resolution of fever and myalgia without the use of antipyretics OR at least 7 days have passed since symptom onset, whichever is longer.

Market Impact Update: <https://www.dropbox.com/05/05/20 HTA COVID19 Update>

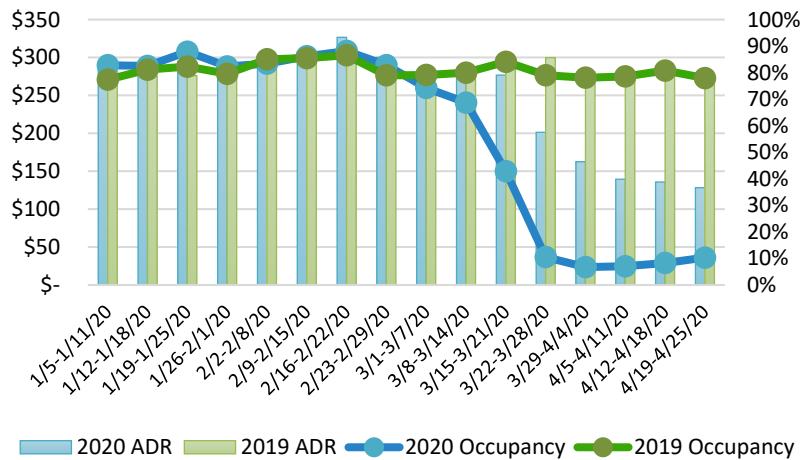
7-Day Domestic by Island Moving Average Daily Passenger Volume

2020 Volume as Percentage of 2019 Volume
Through May 4, 2020



Source: HVCB analysis based on data from DBEDT
Note: Passenger volume figures include both visitors and residents.

State of Hawai'i Hotel Performance by Week - 2020 vs 2019



Source: STR, Inc. © Copyright 2020 Hawai'i Tourism Authority

Hawaii Hotel Performance Info: For the week of April 19 – April 25, 2020

	Occupancy	ADR	RevPAR
State of Hawaii	10.3%	\$ 128.33	\$ 13.25
Oahu	9.8%	\$ 142.66	\$ 13.95
Maui County	10.0%	\$ 115.51	\$ 11.52
Kauai County	5.5%	\$ 125.91	\$ 6.87
Island of Hawaii	18.7%	\$ 96.79	\$ 18.11

Domestic by Island Month-to-Date and Year-to-Date Daily Passenger Volume

2020 Volume versus 2019 Volume
Through May 4, 2020

May 2020 (Month-to-Date through May 4)

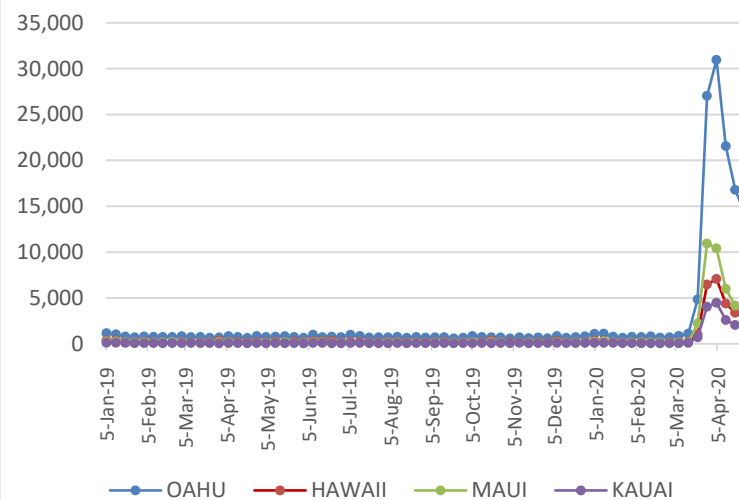
	2020	2019	Volume Change	Percent Change
Honolulu	1,902	51,059	-49,157	-96.3%
Maui County	147	25,141	-24,994	-99.4%
Island of Hawai'i	86	9,780	-9,694	-99.1%
Kaua'i	26	10,338	-10,312	-99.7%
Total	2,161	96,318	-94,157	-97.8%

2020 (Year-to-Date through May 4)

	2020	2019	Volume Change	Percent Change
Honolulu	974,133	1,482,321	-508,188	-34.3%
Maui County	441,727	691,842	-250,115	-36.2%
Island of Hawai'i	216,840	333,936	-117,096	-35.1%
Kaua'i	148,872	243,916	-95,044	-39.0%
Total	1,781,572	2,752,015	-970,443	-35.3%

Source: HVCB analysis based on data from DBEDT
Note: Passenger volume figures include both visitors and residents. Total includes other international passengers. 2020 includes one additional day due to Leap Year (February 29th, 2020).

2020 Initial Weekly Unemployment Claims by Island



Weekly Unemployment Initial Claims: April 25, 2020

State of Hawaii	22,496
C&C of Oahu	14,327
Hawaii County	2,797
Maui County	3,579
Kauai County	1,566
Agent (filed in Hawaii against another state)	227

News Highlights

May 5, 2020

Honolulu Star-Advertiser: [Hawaii tourism leaders urge state recovery plan](#)

The Garden Island: [Two caught sneaking onto Kauai](#)

Honolulu Civil Beat: [Denby Fawcett: We're Going To Have To Get Over Our Anger Toward Tourists](#)

The Wall Street Journal: [Coronavirus Hits Hawaii's Tourism-Dependent Workforce Hard](#)

The New York Times: [Reopening Will Start Friday, Newsom Says](#)

Travel Guide: [Hawaii travel paradise is deserted, with recovery further off](#)

Frommer's: [Hawaii Is Using the Shutdown to Transform Its Tourist Experience](#)

CNBC: [When will we start traveling again? Here's what experts are saying](#)

Fodor's Travel: [Coronavirus Has Revealed How Bad Hawaii's Tourism Problem Really Is](#)

Forbes: [Vacation In Hawaii Like A Homeowner With Destination Residences Hawaii](#)

Helpful Resources

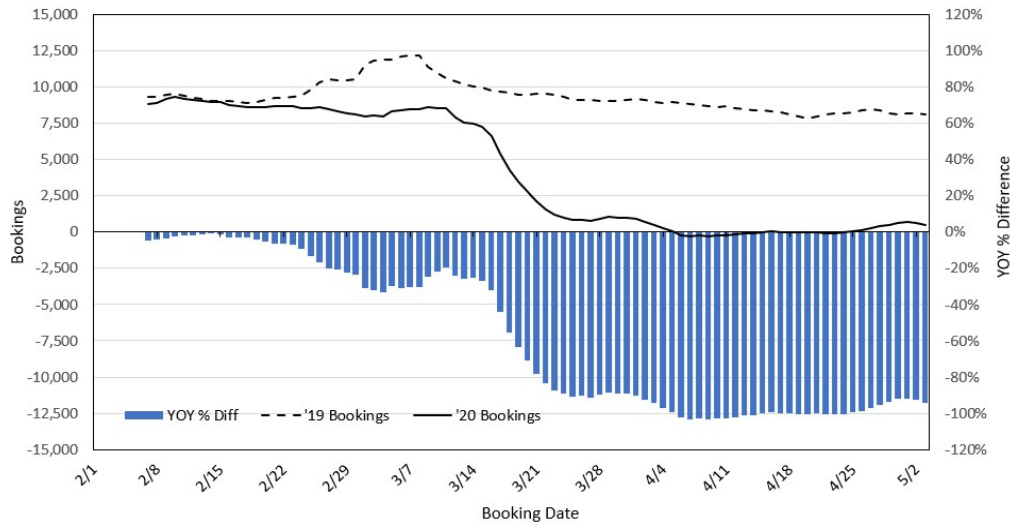
Department of Health
<https://hawaiicovid19.com/>

Department of Health
<https://health.hawaii.gov/docd/advisories/novel-coronavirus-2019>

Dept. of Business, Economic Development & Tourism
<https://dbedt.hawaii.gov/economic/covid19/>

Department of Transportation
<https://hidot.hawaii.gov/coronavirus/>

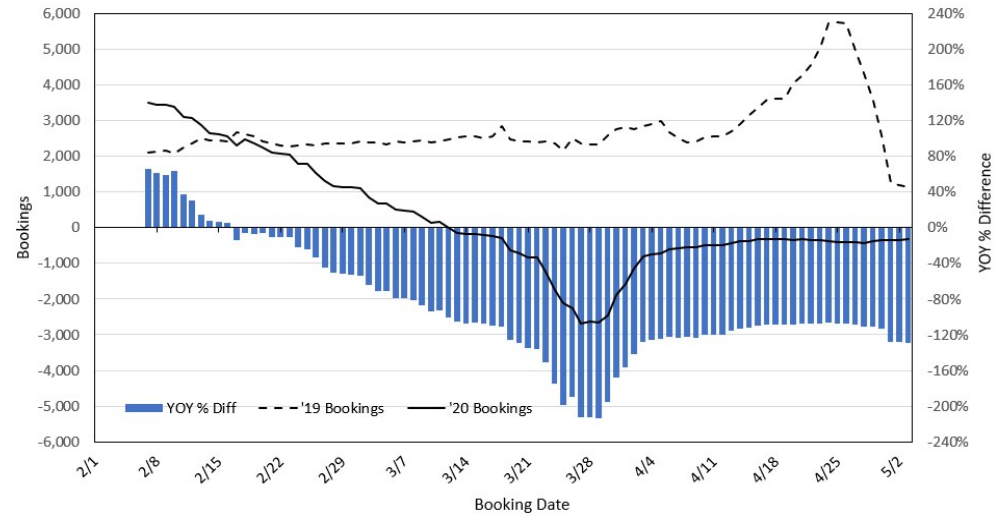
Travel Agency Bookings to Hawaii for Future Arrivals* Based on a 7-day Moving Average, 2020 vs 2019 U.S.



*Future Arrivals refers to all arrivals that are 'future' relative to the referenced booking date.
Source: Global Agency Pro

Update: May 3, 2020

Travel Agency Bookings to Hawaii for Future Arrivals* Based on a 7-day Moving Average, 2020 vs 2019 Japan



*Future Arrivals refers to all arrivals that are 'future' relative to the referenced booking date.
Source: Global Agency Pro

Update: May 3, 2020

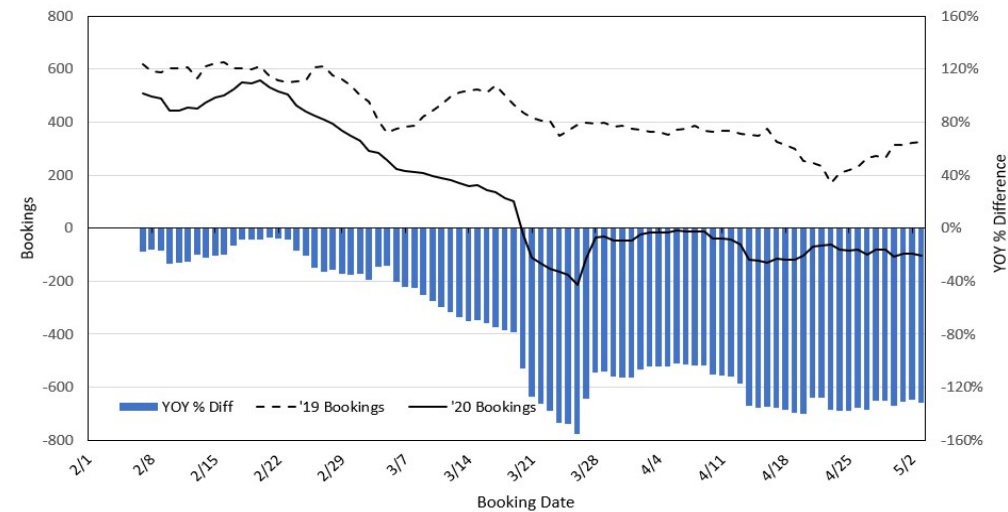
Travel Agency Bookings to Hawaii for Future Arrivals* Based on a 7-day Moving Average, 2020 vs 2019 Canada



*Future Arrivals refers to all arrivals that are 'future' relative to the referenced booking date.
Source: Global Agency Pro

Update: May 3, 2020

Travel Agency Bookings to Hawaii for Future Arrivals* Based on a 7-day Moving Average, 2020 vs 2019 Australia



*Future Arrivals refers to all arrivals that are 'future' relative to the referenced booking date.
Source: Global Agency Pro

Update: May 3, 2020