

# HTA COVID-19 UPDATE

(Issued: 5/6/20 @ 3:30pm)

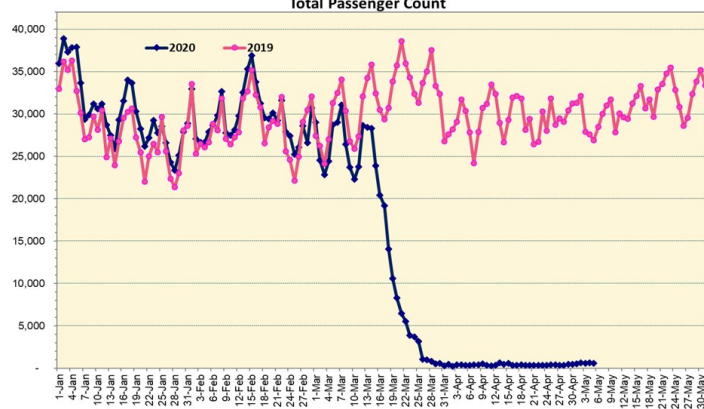
## Novel Coronavirus in Hawaii

COVID-19 Positive\* Cases

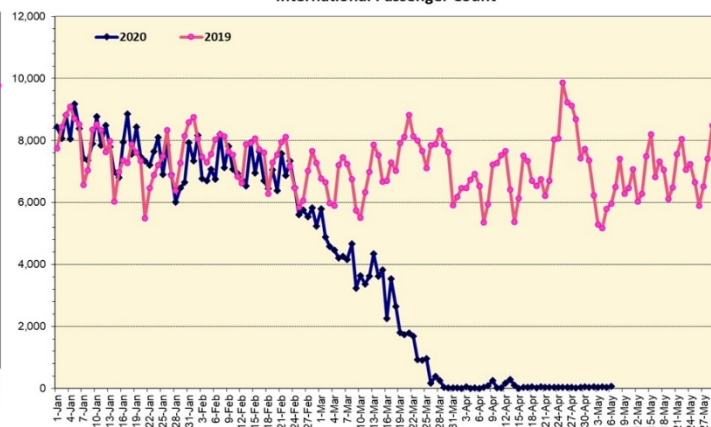
Cumulative totals as of 12:00 noon on May 6, 2020

Total Passenger Count

International Passenger Count

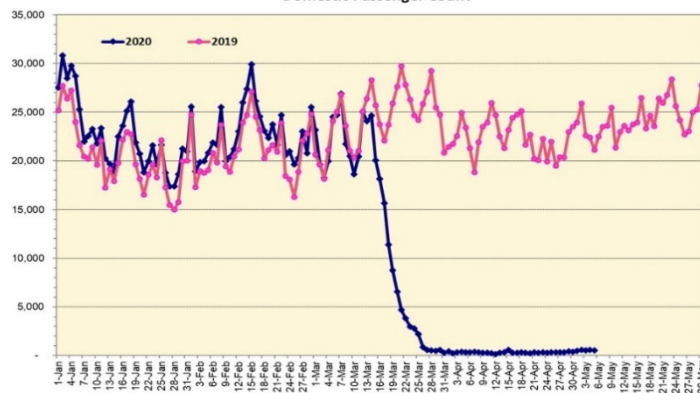


Note: Excludes flights from Canada



Note: Excludes flights from Canada

Domestic Passenger Count



### Daily Passenger Count Table

05/05/2020	Domestic	International	Total
Oahu	480	40	520
Maui	0		0
Island of Hawaii	61		61
Kauai	0		0
State	541	40	581

### 05/06/20 Hawaii Passenger Arrivals by Air Update

Yesterday, 773 people arrived in Hawaii including 216 visitors and 286 residents. During this same time last year, nearly 30,000 passengers arrived in Hawaii daily, including residents and visitors. The state's mandatory 14-day self-quarantine started on March 26th for all passengers arriving in Hawaii from out of state. The quarantine order was expanded on April 1st to include interisland travelers. This table shows the number of people who arrived by air from out of state yesterday and does not include interisland travel.

	Kona	Maui	Oahu	Lihue	Total
Crew	6		113	2	121
Intended New Resident	14		65		79
Resident	32		254		286
Transit			71		71
Visitor	15		201		216
<b>Grand Total</b>	<b>67</b>	<b>0</b>	<b>704</b>	<b>2</b>	<b>773</b>
Flights	2	0	12	1	15

Market Impact Update: <https://www.dropbox.com/05/06/20 HTA COVID19 Update>

Statewide	Total
Total Cases	626 (1 new)

Released from Isolation† 558

Required Hospitalization 74

Deaths 17

BY COUNTY	Total
-----------	-------

Hawaii County	
---------------	--

Total Cases 74

Released from Isolation† 66

Required Hospitalization 1

Deaths 0

Honolulu County	
-----------------	--

Total Cases 405

Released from Isolation† 379

Required Hospitalization 54

Deaths 11

Kauai County	
--------------	--

Total Cases 21

Released from Isolation† 20

Required Hospitalization 1

Deaths 0

Maui County	
-------------	--

Total Cases 116

Released from Isolation† 93

Required Hospitalization 17

Deaths 6

<b>HI Residents diagnosed outside of HI</b>	<b>10</b>
<b>County Pending</b>	<b>0</b>

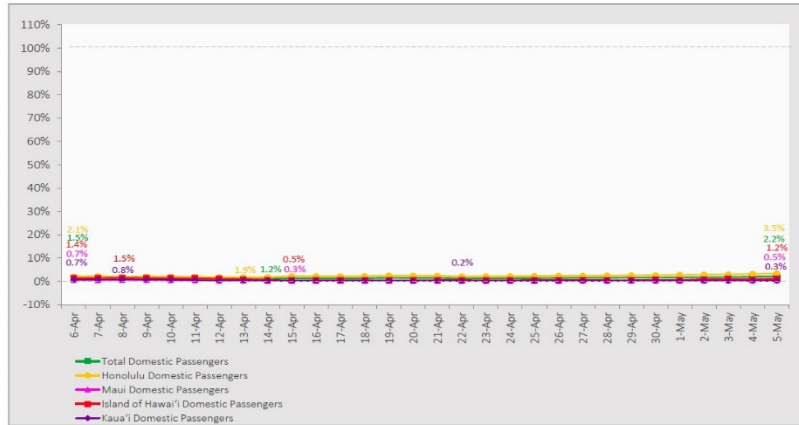
\*includes presumptive and confirmed cases, data are preliminary and subject to change; note that CDC provides case counts according to states of residence.

†Isolation should be maintained until at least 3 days (72 hours) after resolution of fever and myalgia without the use of antipyretics OR at least 7 days have passed since symptom onset, whichever is longer.

## 7-Day Domestic by Island Moving Average Daily Passenger Volume

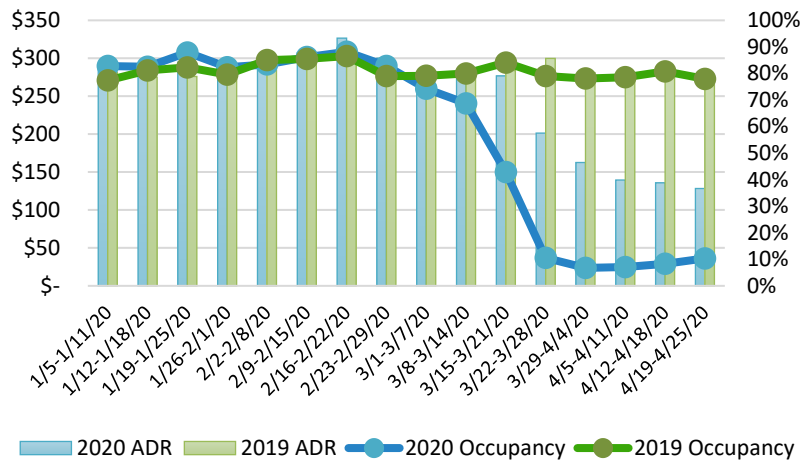
2020 Volume as Percentage of 2019 Volume

Through May 5, 2020



Source: HVCB analysis based on data from DBEDT  
Note: Passenger volume figures include both visitors and residents.

## State of Hawai'i Hotel Performance by Week - 2020 vs 2019



Source: STR, Inc. © Copyright 2020 Hawai'i Tourism Authority

## Hawaii Hotel Performance Info:

For the week of April 19 – April 25, 2020

	Occupancy	ADR	RevPAR
State of Hawaii	10.3%	\$ 128.33	\$ 13.25
Oahu	9.8%	\$ 142.66	\$ 13.95
Maui County	10.0%	\$ 115.51	\$ 11.52
Kauai County	5.5%	\$ 125.91	\$ 6.87
Island of Hawaii	18.7%	\$ 96.79	\$ 18.11

## Domestic by Island Month-to-Date and Year-to-Date Daily Passenger Volume

2020 Volume versus 2019 Volume

Through May 5, 2020

May 2020 (Month-to-Date through May 5)

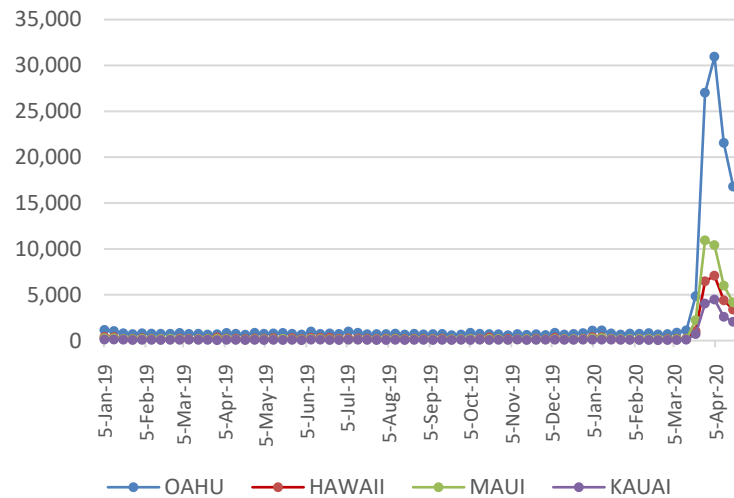
	2020	2019	Volume Change	Percent Change
Honolulu	2,382	64,408	-62,026	-96.3%
Maui County	147	30,775	-30,628	-99.5%
Island of Hawai'i	147	11,727	-11,580	-98.7%
Kaua'i	26	12,015	-11,989	-99.8%
Total	2,702	118,925	-116,223	-97.7%

2020 (Year-to-Date through May 5)

	2020	2019	Volume Change	Percent Change
Honolulu	974,613	1,495,670	-521,057	-34.8%
Maui County	441,727	697,476	-255,749	-36.7%
Island of Hawai'i	216,901	335,883	-118,982	-35.4%
Kaua'i	148,872	245,593	-96,721	-39.4%
Total	1,782,113	2,774,622	-992,509	-35.8%

Source: HVCB analysis based on data from DBEDT  
Note: Passenger volume figures include both visitors and residents. Total includes other international passengers. 2020 includes one additional day due to Leap Year (February 29th, 2020).

## 2020 Initial Weekly Unemployment Claims by Island



## Weekly Unemployment Initial Claims: April 25, 2020

State of Hawaii	22,496
C&C of Oahu	14,327
Hawaii County	2,797
Maui County	3,579
Kauai County	1,566
Agent (filed in Hawaii against another state)	227

## News Highlights

May 6, 2020

**Honolulu Star-Advertiser:** [Hawaii visitor arrivals climb to highest since start of coronavirus quarantine](#)

**Honolulu Star-Advertiser:** [Editorial: Prepare now for tourism's return](#)

**Maui Now:** [Hawaii Tourism Now: Interview with Hawaiian Airlines CEO Peter Ingram](#)

**The Garden Island:** [Easing restrictions](#)

**West Hawaii Today:** [Young Bros. gets OK to reduce barge schedules](#)

**Honolulu Civil Beat:** [How To Restart Tourism And Protect Kamaaina](#)

**West Hawaii Today:** [Kim releases revised \\$585M budget](#)

**Hawaii Public Radio:** [Hawaii Updates: More Retailers, Malls Can Open Thursday; Visitor Count Jumps; Cases Up 4](#)

**USA Today:** [Will visitors flock to Hawaii when quarantine lifts? Hawaiian Airlines CEO is optimistic](#)

**CNN:** [None of the states starting to reopen have met White House guidelines, researcher says](#)

## Helpful Resources

**Department of Health**  
<https://hawaiicovid19.com/>

**Department of Health**  
<https://health.hawaii.gov/docd/advisories/novel-coronavirus-2019>

**Dept. of Business, Economic Development & Tourism**  
<https://dbedt.hawaii.gov/economic/covid19/>

**Department of Transportation**  
<https://hidot.hawaii.gov/coronavirus/>

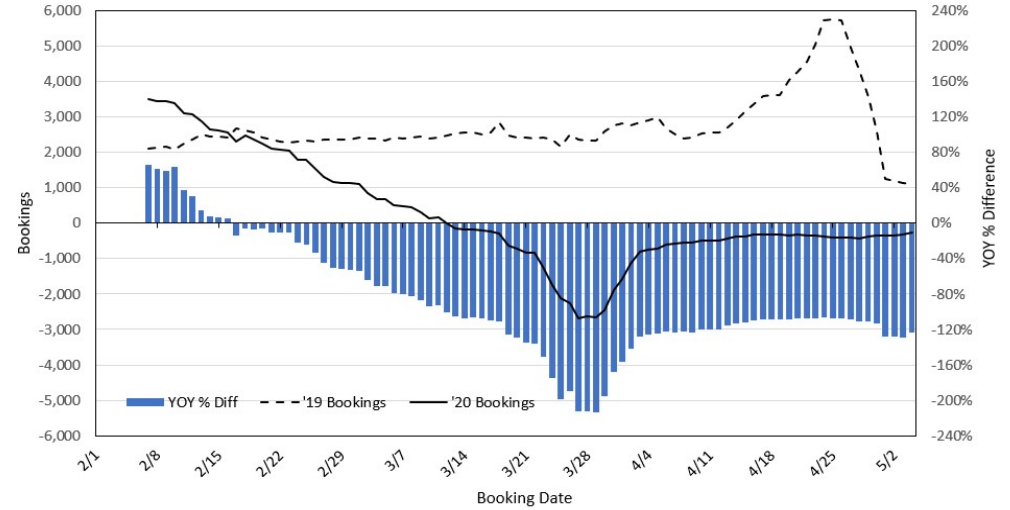
### Travel Agency Bookings to Hawaii for Future Arrivals\* Based on a 7-day Moving Average, 2020 vs 2019 U.S.



\*Future Arrivals refers to all arrivals that are 'future' relative to the referenced booking date.  
Source: Global Agency Pro

Update: May 4, 2020

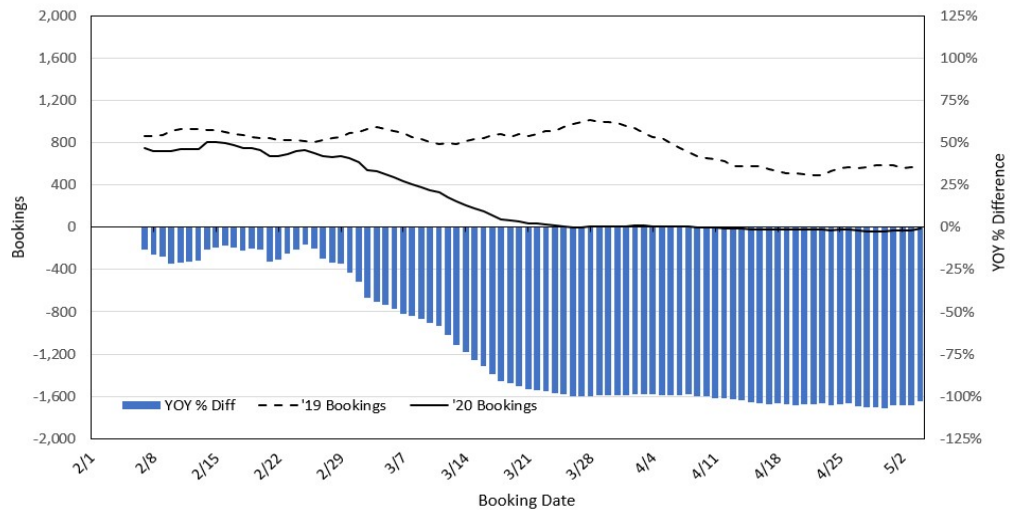
### Travel Agency Bookings to Hawaii for Future Arrivals\* Based on a 7-day Moving Average, 2020 vs 2019 Japan



\*Future Arrivals refers to all arrivals that are 'future' relative to the referenced booking date.  
Source: Global Agency Pro

Update: May 4, 2020

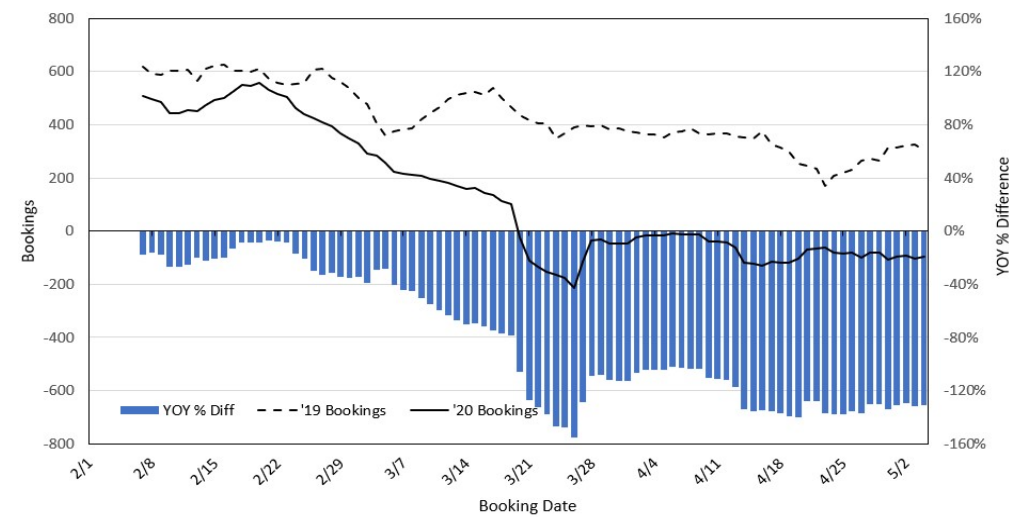
### Travel Agency Bookings to Hawaii for Future Arrivals\* Based on a 7-day Moving Average, 2020 vs 2019 Canada



\*Future Arrivals refers to all arrivals that are 'future' relative to the referenced booking date.  
Source: Global Agency Pro

Update: May 4, 2020

### Travel Agency Bookings to Hawaii for Future Arrivals\* Based on a 7-day Moving Average, 2020 vs 2019 Australia



\*Future Arrivals refers to all arrivals that are 'future' relative to the referenced booking date.  
Source: Global Agency Pro

Update: May 4, 2020