

HTA COVID-19 UPDATE

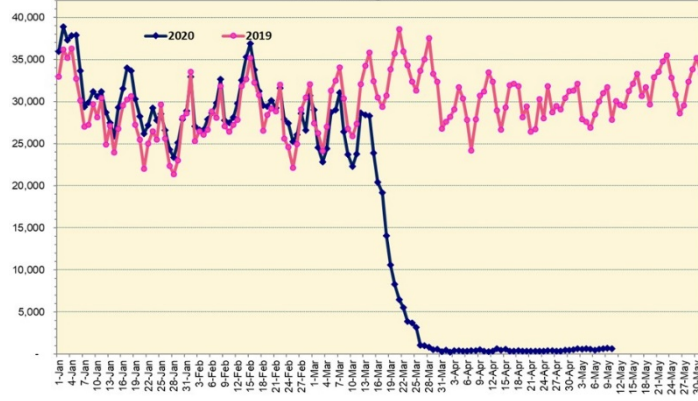
(Issued: 5/11/20 @ 3:00pm)

Novel Coronavirus in Hawaii

COVID-19 Positive* Cases

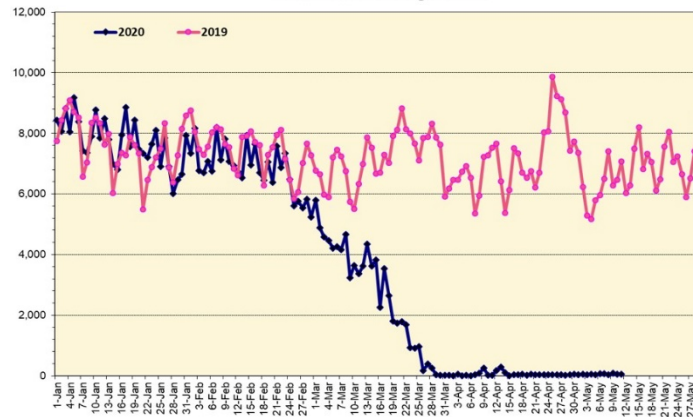
Cumulative totals as of 12:00 noon on May 11, 2020

Total Passenger Count



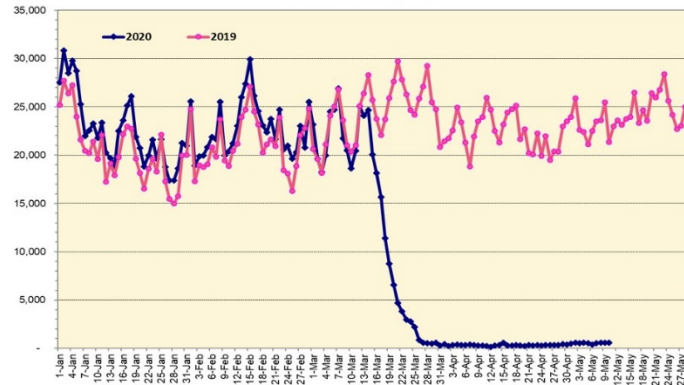
Note: Excludes flights from Canada

International Passenger Count



Note: Excludes flights from Canada

Domestic Passenger Count



Daily Passenger Count Table

05/10/2020	Domestic	International	Total
Oahu	533	62	595
Maui	25		25
Island of Hawaii	40		40
Kauai	0		0
State	598	62	660

05/11/20 Hawaii Passenger Arrivals by Air Update

Yesterday, 854 people arrived in Hawaii including 246 visitors and 334 residents. The state's mandatory 14-day self-quarantine started on March 26th for all passengers arriving in Hawaii from out of state. The quarantine order was expanded on April 1st to include interisland travelers. This table shows the number of people who arrived by air from out of state yesterday and does not include interisland travel.

	Kona	Maui	Oahu	Lihue	Total
Crew	2	12	118		132
Intended New Resident	3	1	76		80
Resident	20	10	304		334
Transit			62		62
Visitor	17	14	215		246
Grand Total	42	37	775	0	854
Flights	3	3	13	0	19

Market Impact Update: <https://www.dropbox.com/05/11/20 HTA COVID19 Update>

Statewide Total

Total Cases **634 (2 new)**

Released from Isolation† 561

Required Hospitalization 81

Deaths 17

BY COUNTY Total

Hawaii County

Total Cases 75

Released from Isolation† 74

Required Hospitalization 1

Deaths 0

Honolulu County

Total Cases 410

Released from Isolation† 376

Required Hospitalization 56

Deaths 11

Kauai County

Total Cases 21

Released from Isolation† 20

Required Hospitalization 1

Deaths 0

Maui County

Total Cases 117

Released from Isolation† 91

Required Hospitalization 22

Deaths 6

HI Residents diagnosed outside of HI 11

County Pending 0

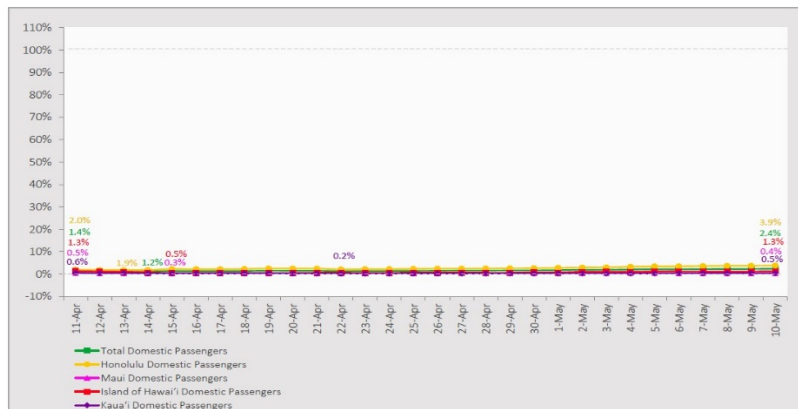
*includes presumptive and confirmed cases, data are preliminary and subject to change; note that CDC provides case counts according to states of residence.

†Isolation should be maintained until at least 3 days (72 hours) after resolution of fever and myalgia without the use of antipyretics OR at least 7 days have passed since symptom onset, whichever is longer.

7-Day Domestic by Island Moving Average Daily Passenger Volume

2020 Volume as Percentage of 2019 Volume

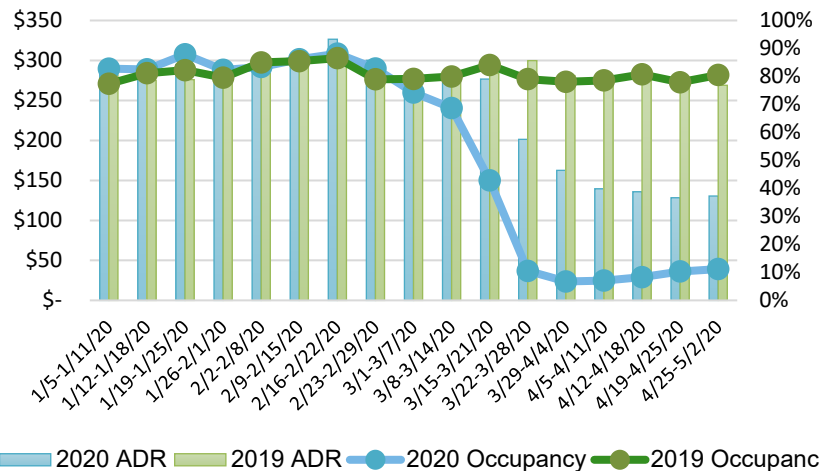
Through May 10, 2020



Source: HVCB analysis based on data from DBEDT

Note: Passenger volume figures include both visitors and residents.

State of Hawaii Hotel Performance by Week - 2020 vs 2019



Source: STR, Inc. © Copyright 2020 Hawai'i Tourism Authority

Hawaii Hotel Performance Info:

For the week of April 25 – May 2, 2020

	Occupancy	ADR	RevPAR
State of Hawaii	11.2%	\$ 130.50	\$ 14.58
Oahu	9.7%	\$ 143.59	\$ 13.93
Maui County	11.1%	\$ 128.78	\$ 14.27
Kauai County	11.0%	\$ 113.64	\$ 12.46
Island of Hawaii	19.6%	\$ 104.10	\$ 20.41

Domestic by Island Month-to-Date and Year-to-Date Daily Passenger Volume

2020 Volume versus 2019 Volume

Through May 10, 2020

May 2020 (Month-to-Date through May 10)

	2020	2019	Volume Change	Percent Change
Honolulu	4,770	126,317	-121,547	-96.2%
Maui County	223	60,125	-59,902	-99.6%
Island of Hawai'i	291	23,659	-23,368	-98.8%
Kaua'i	94	21,943	-21,849	-99.6%
Total	5,378	232,044	-226,666	-97.7%

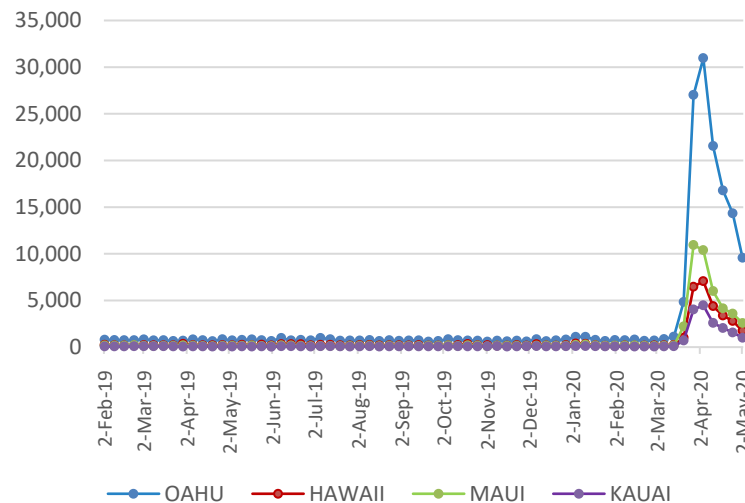
2020 (Year-to-Date through May 10)

	2020	2019	Volume Change	Percent Change
Honolulu	977,001	1,557,579	-580,578	-37.3%
Maui County	441,803	726,826	-285,023	-39.2%
Island of Hawai'i	217,045	347,815	-130,770	-37.6%
Kaua'i	148,940	255,521	-106,581	-41.7%
Total	1,784,789	2,887,741	-1,102,952	-38.2%

Source: HVCB analysis based on data from DBEDT

Note: Passenger volume figures include both visitors and residents. Total includes other international passengers. 2020 includes one additional day due to Leap Year (February 29th, 2020).

2020 Initial Weekly Unemployment Claims by Island



Weekly Unemployment Initial Claims: May 2, 2020

State of Hawaii	15,119
C&C of Oahu	9,559
Hawaii County	1,744
Maui County	2,576
Kauai County	1,002
Agent (filed in Hawaii against another state)	238

News Highlights

May 11, 2020

Honolulu Star-Advertiser: [Lack of clear plan to replace tourism leaves Hawaii's economic future in doubt](#)

Honolulu Star-Advertiser: [New rules for quarantining Hawaii visitors didn't stop more from coming Friday](#)

Honolulu Star-Advertiser: [Letters: Houses of worship should be reopened; Don't let tourism continue to rule; Hawaii shouldn't boast about safety](#)

West Hawaii Today: [Special council meeting to hear bill to create luxury home class](#)

Hawaii Tribune-Herald: [Maunakea observatories prepare to reopen](#)

Hawaii Tribune-Herald: [Hilo mall reopens, but most retailers inside still closed](#)

The Philadelphia Tribune: [Hawaii to visitors: We'll pay you to leave](#)

Travel + Leisure: [I Was Stranded in Hawaii by Coronavirus — and the Magical Islands Completely Stole My Heart](#)

CNN: [Trapped in paradise: Breaking quarantine could mean prison time for tourists in Hawaii](#)

Skift: [Shanghai Disneyland Reopens With Anti-Virus Precautions](#)

Helpful Resources

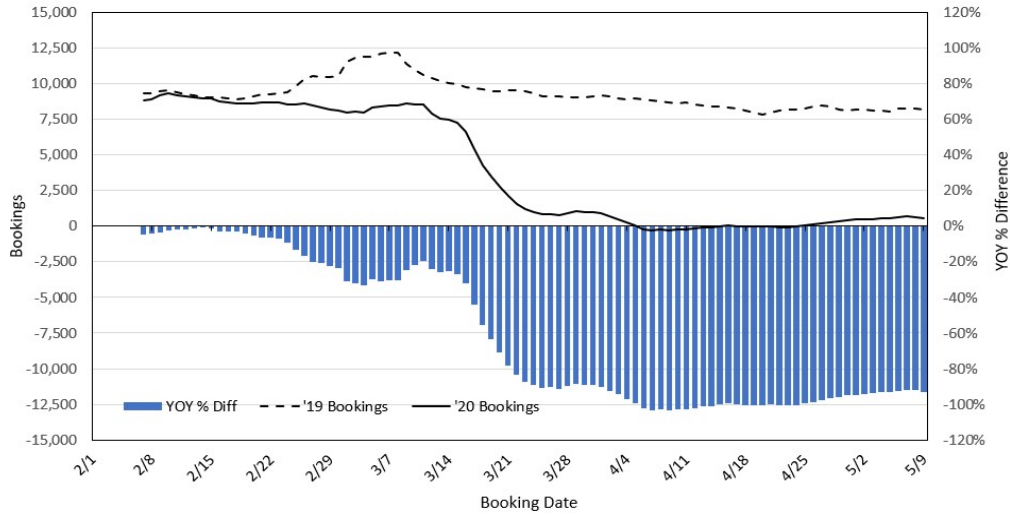
Department of Health
<https://hawaiicovid19.com/>

Department of Health
<https://health.hawaii.gov/dacd/advisories/novel-coronavirus-2019>

Dept. of Business, Economic Development & Tourism
<https://dbedt.hawaii.gov/economic/covid19/>

Department of Transportation
<https://hidot.hawaii.gov/coronavirus/>

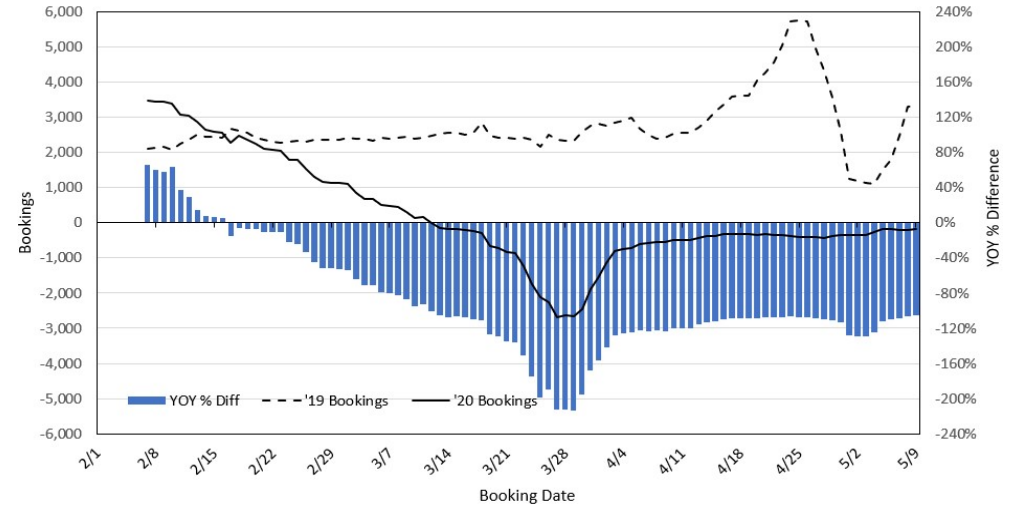
Travel Agency Bookings to Hawaii for Future Arrivals* Based on a 7-day Moving Average, 2020 vs 2019 U.S.



*Future Arrivals refers to all arrivals that are 'future' relative to the referenced booking date.
Source: Global Agency Pro

Update: May 9, 2020

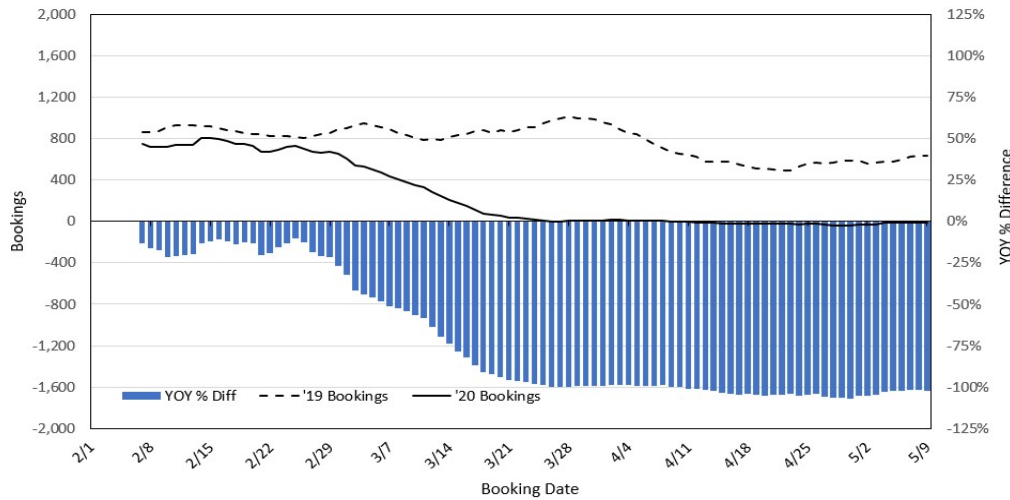
Travel Agency Bookings to Hawaii for Future Arrivals* Based on a 7-day Moving Average, 2020 vs 2019 Japan



*Future Arrivals refers to all arrivals that are 'future' relative to the referenced booking date.
Source: Global Agency Pro

Update: May 9, 2020

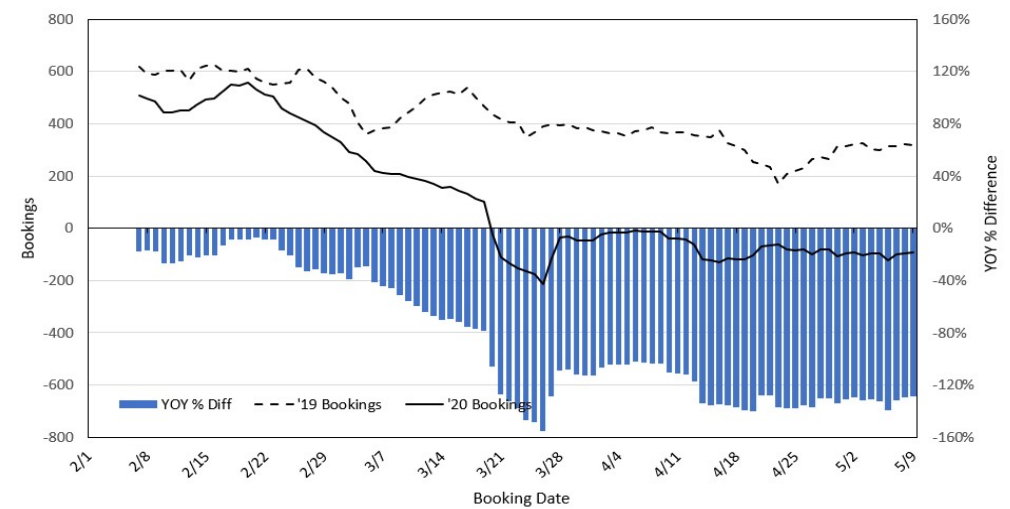
Travel Agency Bookings to Hawaii for Future Arrivals* Based on a 7-day Moving Average, 2020 vs 2019 Canada



*Future Arrivals refers to all arrivals that are 'future' relative to the referenced booking date.
Source: Global Agency Pro

Update: May 9, 2020

Travel Agency Bookings to Hawaii for Future Arrivals* Based on a 7-day Moving Average, 2020 vs 2019 Australia



*Future Arrivals refers to all arrivals that are 'future' relative to the referenced booking date.
Source: Global Agency Pro

Update: May 9, 2020