

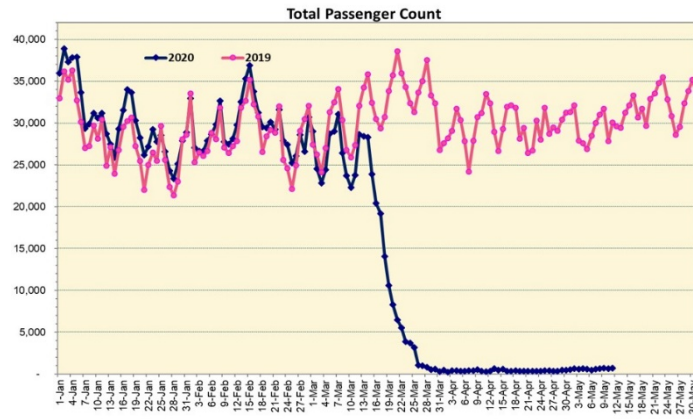
# HTA COVID-19 UPDATE

(Issued: 5/12/20 @ 3:00pm)

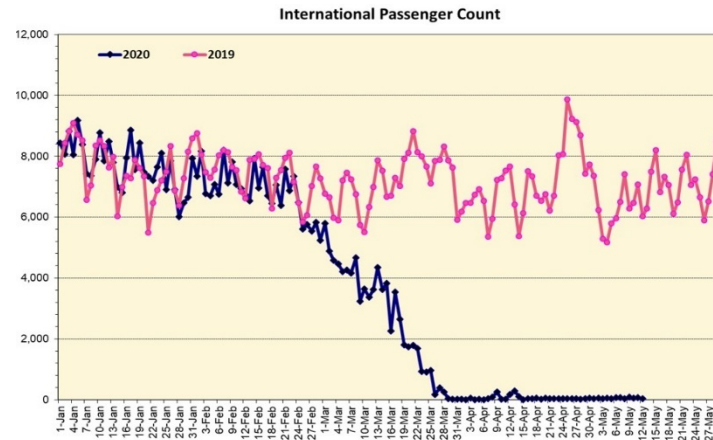
## Novel Coronavirus in Hawaii

COVID-19 Positive\* Cases

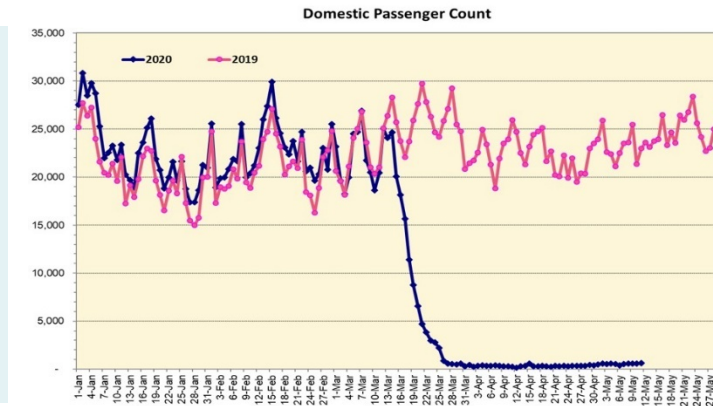
Cumulative totals as of 12:00 noon on May 12, 2020



Note: Excludes flights from Canada



Note: Excludes flights from Canada



### Daily Passenger Count Table

05/11/2020	Domestic	International	Total
Oahu	580	75	655
Maui	59		59
Island of Hawaii	0		0
Kauai	0		0
State	639	75	714

### 05/12/20 Hawaii Passenger Arrivals by Air Update

Yesterday, 893 people arrived in Hawaii including 286 visitors and 339 residents. The state's mandatory 14-day self-quarantine started on March 26th for all passengers arriving in Hawaii from out of state. The quarantine order was expanded on April 1st to include interisland travelers. This table shows the number of people who arrived by air from out of state yesterday and does not include interisland travel.

	Kona	Maui	Oahu	Lihue	Total
Crew		6	131		137
Intended New Resident		2	85		87
Resident		37	302		339
Transit			44		44
Visitor		18	268		286
<b>Grand Total</b>	<b>0</b>	<b>63</b>	<b>830</b>	<b>0</b>	<b>893</b>
Flights	<b>0</b>	<b>1</b>	<b>13</b>	<b>0</b>	<b>14</b>

Statewide	Total
Total Cases	635 (1 new)
Released from Isolation†	563
Required Hospitalization	81
Deaths	17
BY COUNTY	Total
Hawaii County	
Total Cases	75
Released from Isolation†	75
Required Hospitalization	1
Deaths	0
Honolulu County	
Total Cases	411
Released from Isolation†	376
Required Hospitalization	56
Deaths	11
Kauai County	
Total Cases	21
Released from Isolation†	20
Required Hospitalization	1
Deaths	0
Maui County	
Total Cases	117
Released from Isolation†	92
Required Hospitalization	22
Deaths	6
HI Residents diagnosed outside of HI	11
County Pending	0

\*includes presumptive and confirmed cases, data are preliminary and subject to change; note that CDC provides case counts according to states of residence.

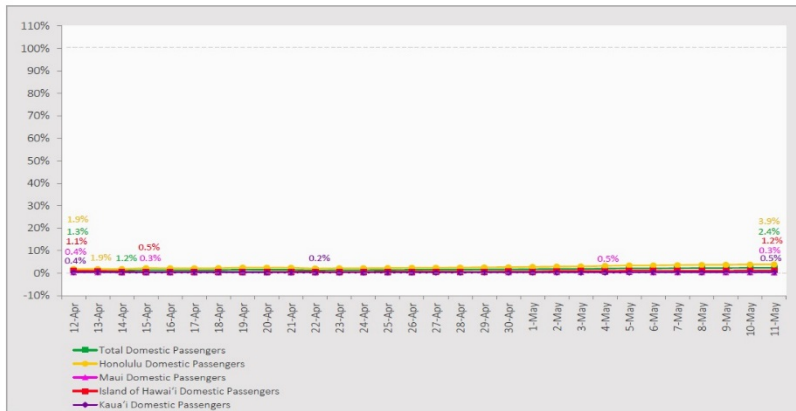
†Isolation should be maintained until at least 3 days (72 hours) after resolution of fever and myalgia without the use of antipyretics OR at least 7 days have passed since symptom onset, whichever is longer.

Market Impact Update: <https://www.dropbox.com/05/12/20 HTA COVID19 Update>

## 7-Day Domestic by Island Moving Average Daily Passenger Volume

2020 Volume as Percentage of 2019 Volume

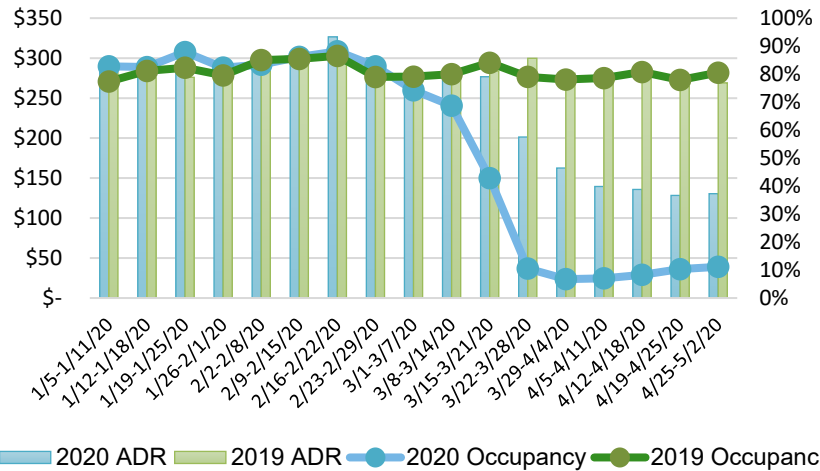
Through May 11, 2020



Source: HVCB analysis based on data from DBEDT

Note: Passenger volume figures include both visitors and residents.

## State of Hawaii Hotel Performance by Week - 2020 vs 2019



Source: STR, Inc. © Copyright 2020 Hawai'i Tourism Authority

## Hawaii Hotel Performance Info:

For the week of April 25 – May 2, 2020

	Occupancy	ADR	RevPAR
State of Hawaii	11.2%	\$ 130.50	\$ 14.58
Oahu	9.7%	\$ 143.59	\$ 13.93
Maui County	11.1%	\$ 128.78	\$ 14.27
Kauai County	11.0%	\$ 113.64	\$ 12.46
Island of Hawaii	19.6%	\$ 104.10	\$ 20.41

## Domestic by Island Month-to-Date and Year-to-Date Daily Passenger Volume

2020 Volume versus 2019 Volume

Through May 11, 2020

May 2020 (Month-to-Date through May 11)

	2020	2019	Volume Change	Percent Change
Honolulu	5,350	139,597	-134,247	-96.2%
Maui County	284	66,809	-66,525	-99.6%
Island of Hawai'i	291	26,322	-26,031	-98.9%
Kaua'i	94	24,764	-24,670	-99.6%
Total	6,019	257,492	-251,473	-97.7%

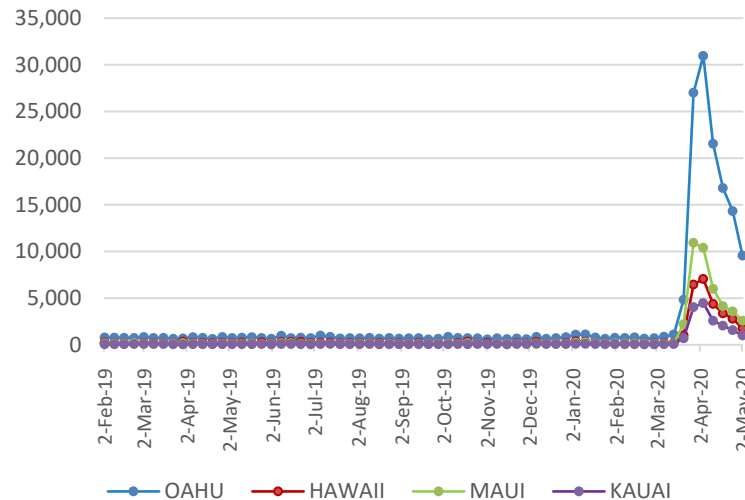
2020 (Year-to-Date through May 11)

	2020	2019	Volume Change	Percent Change
Honolulu	977,581	1,570,859	-593,278	-37.8%
Maui County	441,864	733,510	-291,646	-39.8%
Island of Hawai'i	217,045	350,478	-133,433	-38.1%
Kaua'i	148,940	258,342	-109,402	-42.3%
Total	1,785,430	2,913,189	-1,127,759	-38.7%

Source: HVCB analysis based on data from DBEDT

Note: Passenger volume figures include both visitors and residents. Total includes other international passengers. 2020 includes one additional day due to Leap Year (February 29th, 2020).

## 2020 Initial Weekly Unemployment Claims by Island



## Weekly Unemployment Initial Claims: May 2, 2020

State of Hawaii	15,119
C&C of Oahu	9,559
Hawaii County	1,744
Maui County	2,576
Kauai County	1,002
Agent (filed in Hawaii against another state)	238

## News Highlights

May 12, 2020

**KHON2:** [Hawaiian Airlines blocks middle seats and requires face coverings amid pandemic](#)

**KITV4:** [Gov. Ige considering taking photos of visitors to enforce quarantine orders](#)

**Hawaii News Now:** [Coronavirus recovery a 'marathon,' not a sprint, Gov. Ige says](#)

**Honolulu Star-Advertiser:** [Ige says Hawaii 'flattening curve' but must remain vigilant](#)

**KITV4:** [International Market Place will reopen on Friday](#)

**The Garden Island:** [Keeping short-term rentals closed](#)

**Big Island Now:** [Green Announces 'Travel With Aloha' Program](#)

**Honolulu Civil Beat:** [Denby Fawcett: When Tourism Returns To Hawaii, It Should Be Smarter](#)

**Insider:** [Hawaii is arresting tourists who break the state's mandatory 14-day quarantine to go to the beach](#)

**CNN Travel:** [Two-week quarantine: Summer vacations with strings attached](#)

## Helpful Resources

Department of Health

<https://hawaiicovid19.com/>

Department of Health

<https://health.hawaii.gov/docd/advisories/novel-coronavirus-2019>

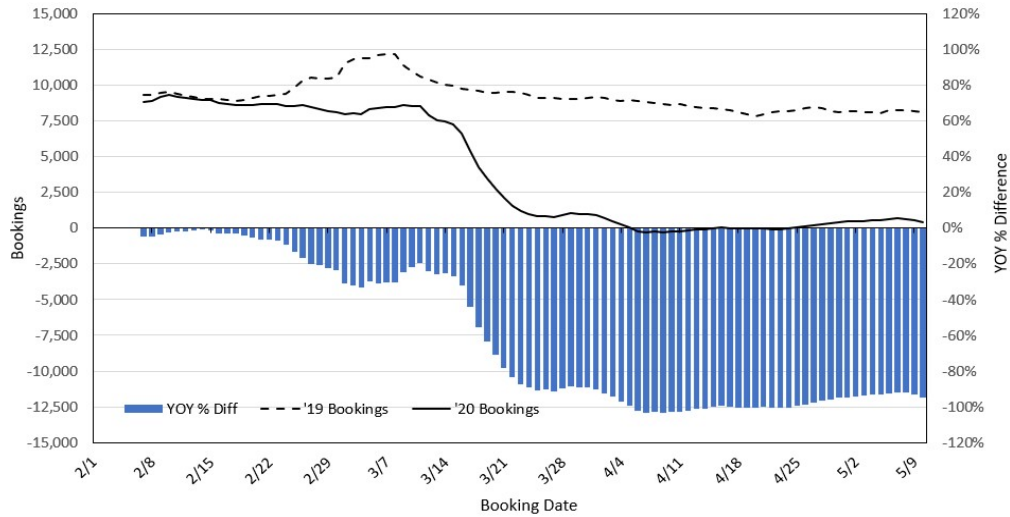
Dept. of Business, Economic Development & Tourism

<https://dbedt.hawaii.gov/economic/covid19/>

Department of Transportation

<https://hidot.hawaii.gov/coronavirus/>

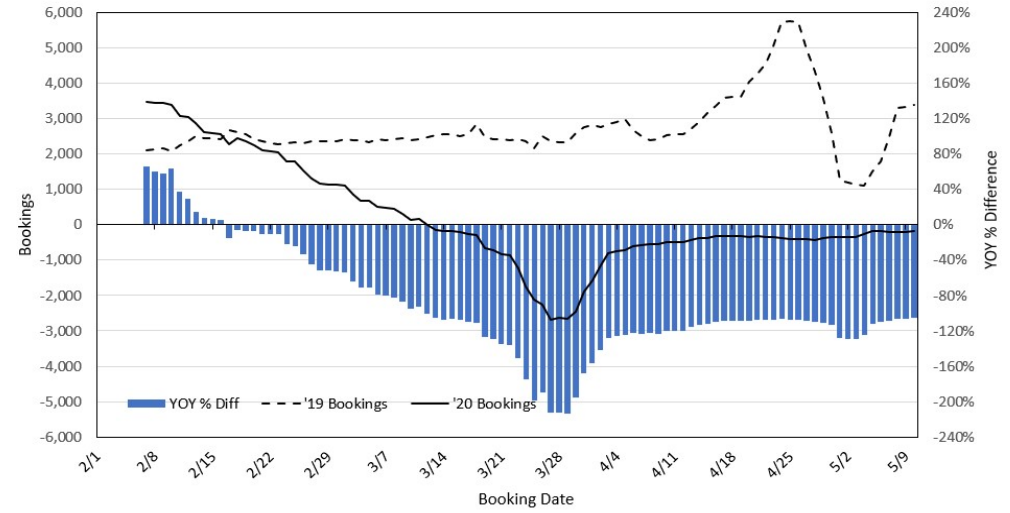
### Travel Agency Bookings to Hawaii for Future Arrivals\* Based on a 7-day Moving Average, 2020 vs 2019 U.S.



\*Future Arrivals refers to all arrivals that are 'future' relative to the referenced booking date.  
Source: Global Agency Pro

Update: May 10, 2020

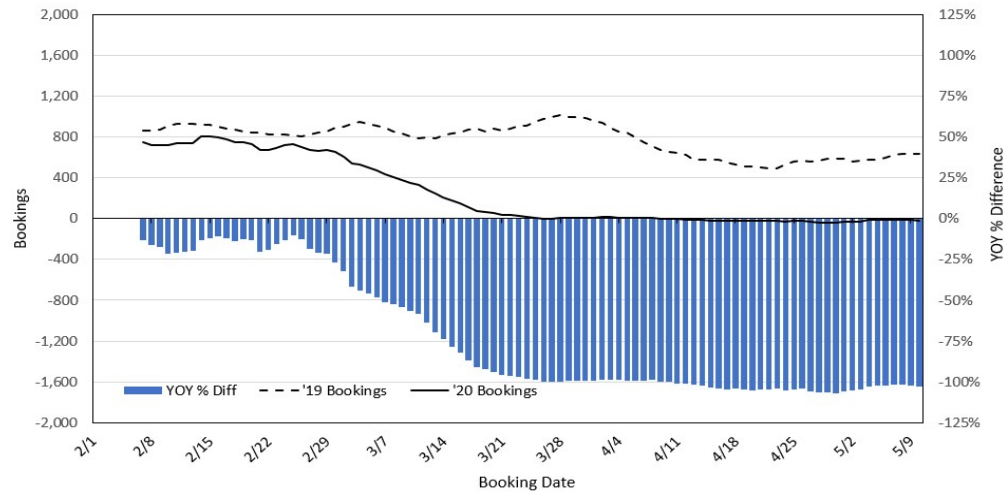
### Travel Agency Bookings to Hawaii for Future Arrivals\* Based on a 7-day Moving Average, 2020 vs 2019 Japan



\*Future Arrivals refers to all arrivals that are 'future' relative to the referenced booking date.  
Source: Global Agency Pro

Update: May 10, 2020

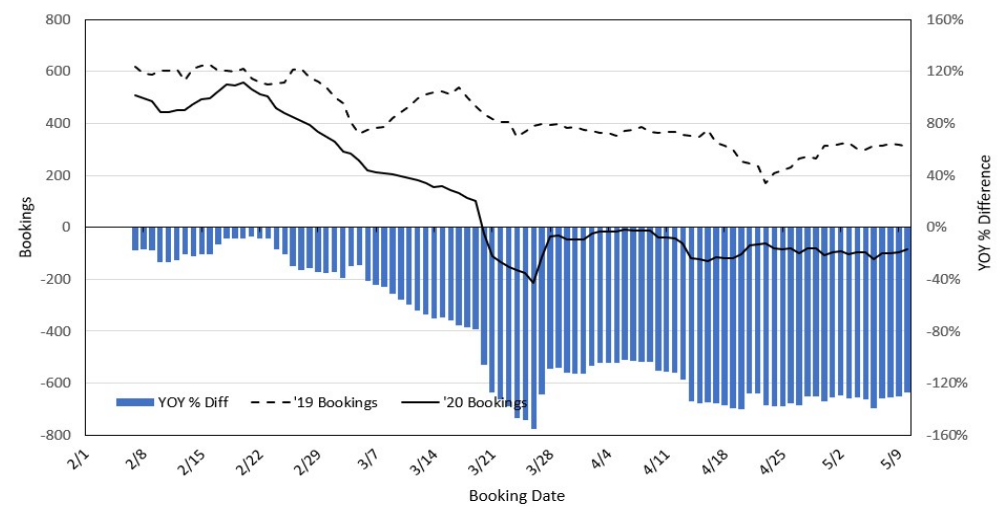
### Travel Agency Bookings to Hawaii for Future Arrivals\* Based on a 7-day Moving Average, 2020 vs 2019 Canada



\*Future Arrivals refers to all arrivals that are 'future' relative to the referenced booking date.  
Source: Global Agency Pro

Update: May 10, 2020

### Travel Agency Bookings to Hawaii for Future Arrivals\* Based on a 7-day Moving Average, 2020 vs 2019 Australia



\*Future Arrivals refers to all arrivals that are 'future' relative to the referenced booking date.  
Source: Global Agency Pro

Update: May 10, 2020