

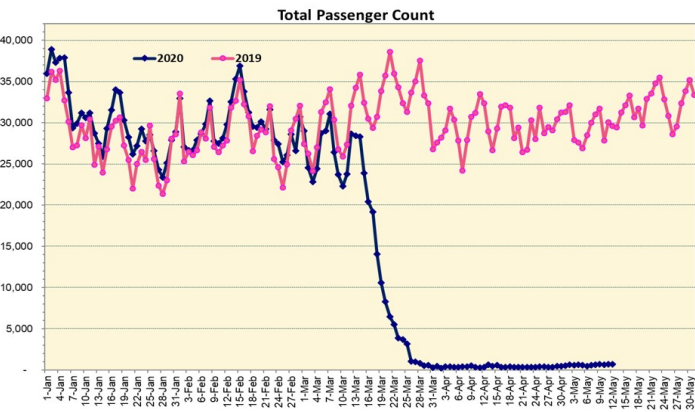
HTA COVID-19 UPDATE

(Issued: 5/13/20 @ 3:30pm)

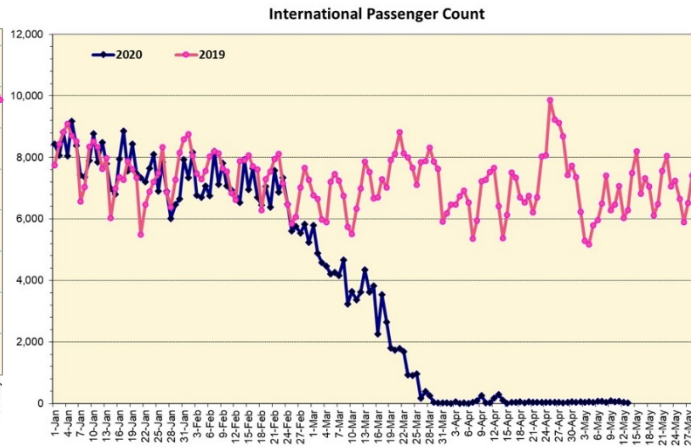
Novel Coronavirus in Hawaii

COVID-19 Positive* Cases

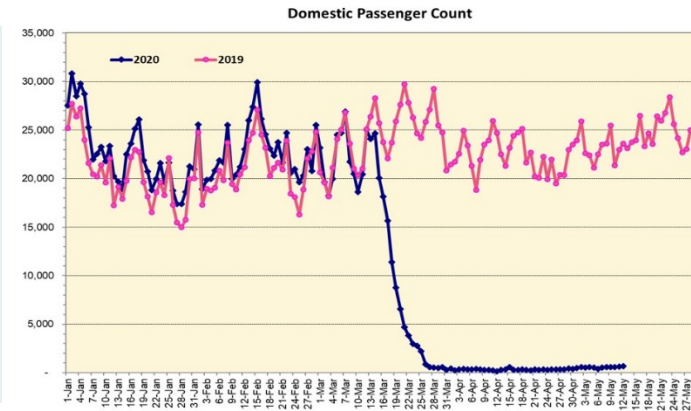
Cumulative totals as of 12:00 noon on May 13, 2020



Note: Excludes flights from Canada



Note: Excludes flights from Canada



Daily Passenger Count Table

| 05/12/2020 | Domestic | International | Total |
|------------------|----------|---------------|-------|
| Oahu | 590 | 30 | 620 |
| Maui | 0 | | 0 |
| Island of Hawaii | 69 | | 69 |
| Kauai | 0 | | 0 |
| State | 659 | 30 | 689 |

05/13/20 Hawaii Passenger Arrivals by Air Update

Yesterday, 852 people arrived in Hawaii including 264 visitors and 321 residents. The state's mandatory 14-day self-quarantine started on March 26th for all passengers arriving in Hawaii from out of state. The quarantine order was expanded on April 1st to include interisland travelers. This table shows the number of people who arrived by air from out of state yesterday and does not include interisland travel.

| | Kona | Maui | Oahu | Lihue | Total |
|-----------------------|-----------|----------|------------|----------|------------|
| Crew | 3 | | 114 | | 117 |
| Intended New Resident | 16 | | 88 | | 104 |
| Resident | 27 | | 294 | | 321 |
| Transit | | | 46 | | 46 |
| Visitor | 26 | | 238 | | 264 |
| Grand Total | 72 | 0 | 780 | 0 | 852 |
| Flights | 1 | 0 | 12 | 0 | 13 |

| Statewide | Total |
|---|-------------|
| Total Cases | 638 (3 new) |
| Released from Isolation† | 563 |
| Required Hospitalization | 81 |
| Deaths | 17 |
| BY COUNTY | Total |
| Hawaii County | |
| Total Cases | 75 |
| Released from Isolation† | 75 |
| Required Hospitalization | 1 |
| Deaths | 0 |
| Honolulu County | |
| Total Cases | 414 |
| Released from Isolation† | 376 |
| Required Hospitalization | 56 |
| Deaths | 11 |
| Kauai County | |
| Total Cases | 21 |
| Released from Isolation† | 20 |
| Required Hospitalization | 1 |
| Deaths | 0 |
| Maui County | |
| Total Cases | 117 |
| Released from Isolation† | 92 |
| Required Hospitalization | 22 |
| Deaths | 6 |
| HI Residents diagnosed outside of HI | 11 |
| County Pending | 0 |

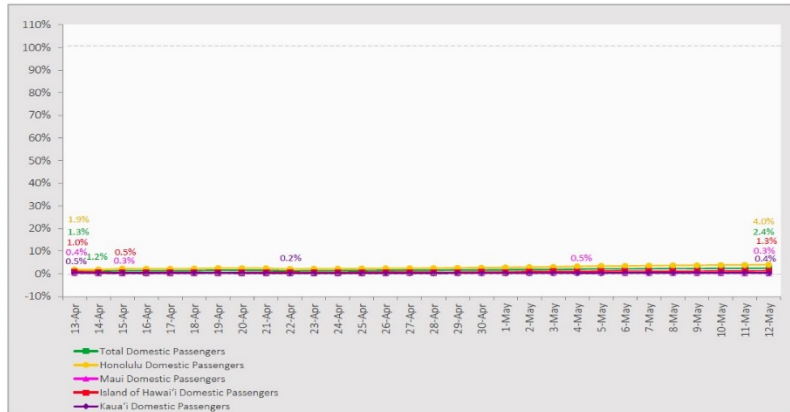
*includes presumptive and confirmed cases, data are preliminary and subject to change; note that CDC provides case counts according to states of residence.

†Isolation should be maintained until at least 3 days (72 hours) after resolution of fever and myalgia without the use of antipyretics OR at least 7 days have passed since symptom onset, whichever is longer.

Market Impact Update: <https://www.dropbox.com/05/13/20 HTA COVID19 Update>

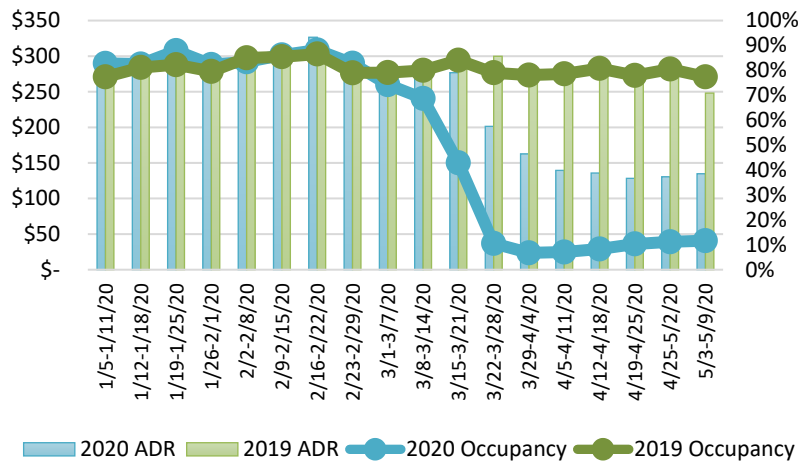
7-Day Domestic by Island Moving Average Daily Passenger Volume

2020 Volume as Percentage of 2019 Volume
Through May 12, 2020



Source: HVCB analysis based on data from DBEDT
Note: Passenger volume figures include both visitors and residents.

State of Hawaii Hotel Performance by Week - 2020 vs 2019



Source: STR, Inc. © Copyright 2020 Hawai'i Tourism Authority

Hawaii Hotel Performance Info:

For the week of May 3 – May 9, 2020

| | Occupancy | ADR | RevPAR |
|------------------|-----------|-----------|----------|
| State of Hawaii | 11.6% | \$ 134.77 | \$ 15.68 |
| Oahu | 10.3% | \$ 147.54 | \$ 15.22 |
| Maui County | 11.6% | \$ 139.98 | \$ 16.07 |
| Kauai County | 9.6% | \$ 112.15 | \$ 10.78 |
| Island of Hawaii | 19.5% | \$ 105.64 | \$ 20.56 |

Domestic by Island Month-to-Date and Year-to-Date Daily Passenger Volume

2020 Volume versus 2019 Volume
Through May 12, 2020

May 2020 (Month-to-Date through May 12)

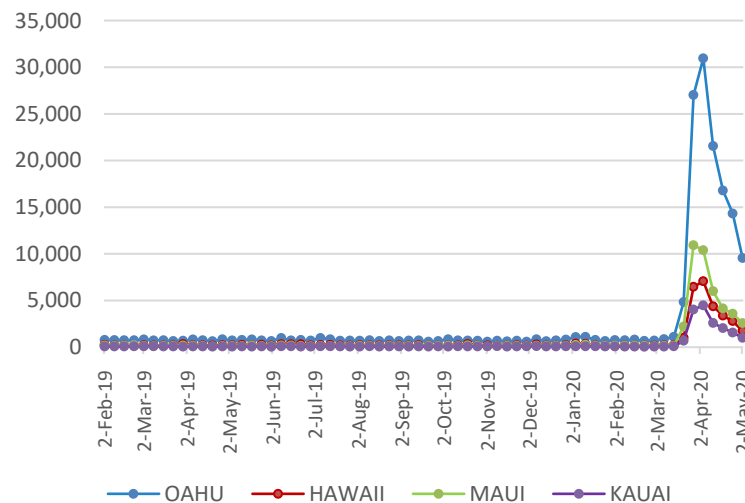
| | 2020 | 2019 | Volume Change | Percent Change |
|-------------------|-------|---------|---------------|----------------|
| Honolulu | 5,940 | 152,224 | -146,284 | -96.1% |
| Maui County | 284 | 72,136 | -71,852 | -99.6% |
| Island of Hawai'i | 360 | 28,097 | -27,737 | -98.7% |
| Kaua'i | 94 | 26,380 | -26,286 | -99.6% |
| Total | 6,678 | 278,837 | -272,159 | -97.6% |

2020 (Year-to-Date through May 12)

| | 2020 | 2019 | Volume Change | Percent Change |
|-------------------|-----------|-----------|---------------|----------------|
| Honolulu | 978,171 | 1,583,486 | -605,315 | -38.2% |
| Maui County | 441,864 | 738,837 | -296,973 | -40.2% |
| Island of Hawai'i | 217,114 | 352,253 | -135,139 | -38.4% |
| Kaua'i | 148,940 | 259,958 | -111,018 | -42.7% |
| Total | 1,786,089 | 2,934,534 | -1,148,445 | -39.1% |

Source: HVCB analysis based on data from DBEDT
Note: Passenger volume figures include both visitors and residents. Total includes other international passengers. 2020 includes one additional day due to Leap Year (February 29th, 2020).

2020 Initial Weekly Unemployment Claims by Island



Weekly Unemployment Initial Claims: May 2, 2020

| | |
|---|--------|
| State of Hawaii | 15,119 |
| C&C of Oahu | 9,559 |
| Hawaii County | 1,744 |
| Maui County | 2,576 |
| Kauai County | 1,002 |
| Agent (filed in Hawaii against another state) | 238 |

News Highlights

May 13, 2020

Honolulu Star-Advertiser: [Oahu malls and retail centers plan to reopen Friday](#)

Honolulu Star-Advertiser: [Monday brought hundreds of visitors to Hawaii, some to stay in illegal vacation rentals](#)

Honolulu Star-Advertiser: [Hawaii vacation rentals use loopholes to skirt quarantine](#)

Honolulu Star-Advertiser: [Color-coded recovery plan for Hawaii to be unveiled](#)

Hawaii News Now: [As new clusters emerge, WHO warns virus may be here to stay](#)

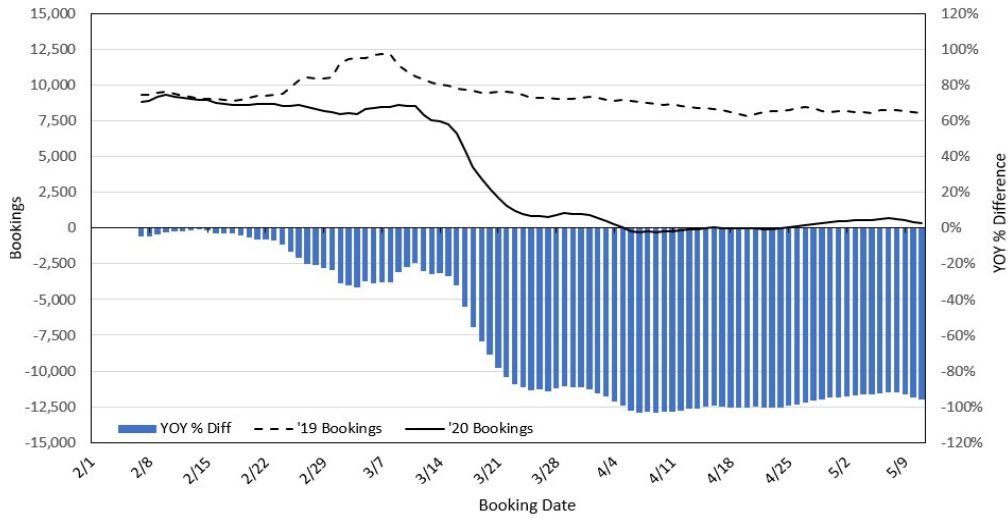
Honolulu Civil Beat: [Trisha Kehaulani Watson: Marketing Hawaii As 'The Safest Place' Could Backfire](#)

West Hawaii Today: [Kona Community Hospital to begin testing all admitted patients](#)

Pacific Business News: [Demand and occupancy for Hawaii vacation rentals fell in March amid Covid-19 travel restrictions](#)

Travel Pulse: [US Airlines Tell Employees Not to Enforce Face Mask Requirement](#)

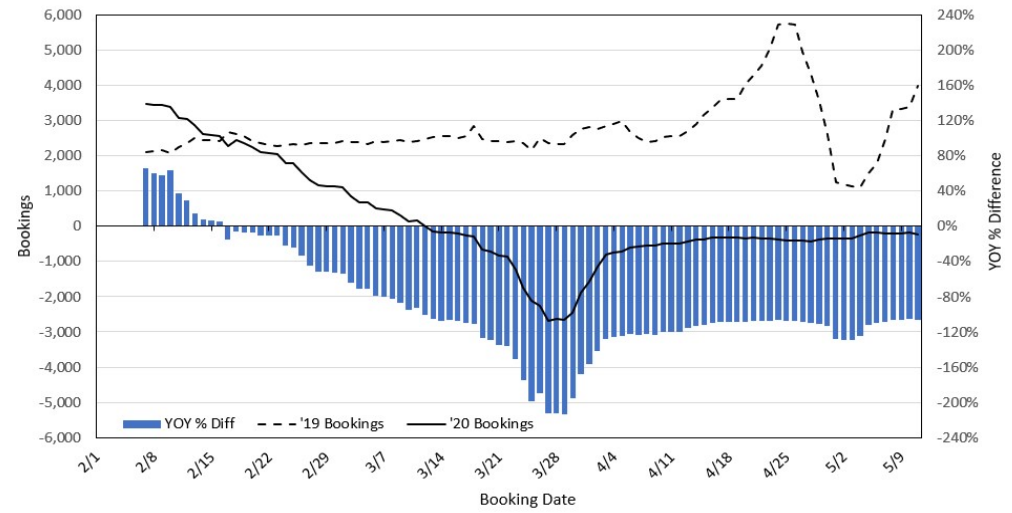
Travel Agency Bookings to Hawaii for Future Arrivals* Based on a 7-day Moving Average, 2020 vs 2019 U.S.



*Future Arrivals refers to all arrivals that are 'future' relative to the referenced booking date.
Source: Global Agency Pro

Update: May 11, 2020

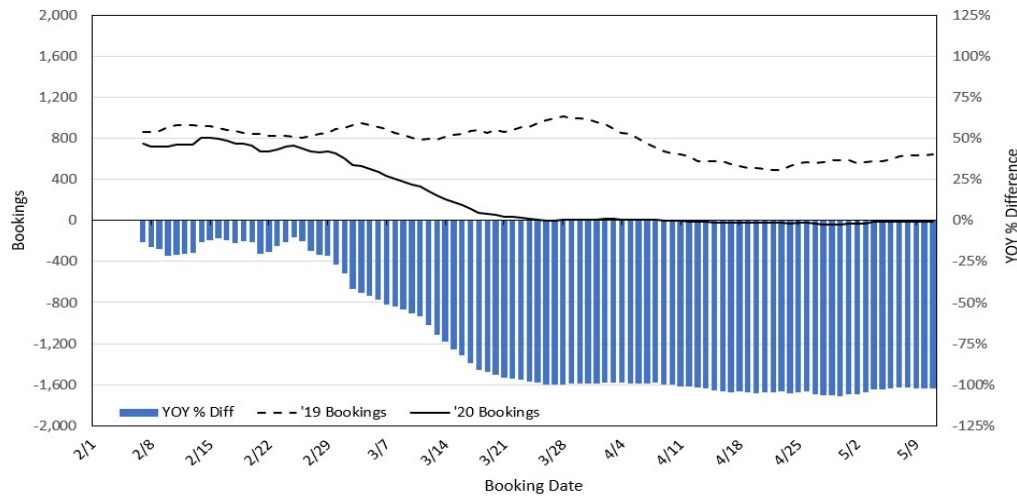
Travel Agency Bookings to Hawaii for Future Arrivals* Based on a 7-day Moving Average, 2020 vs 2019 Japan



*Future Arrivals refers to all arrivals that are 'future' relative to the referenced booking date.
Source: Global Agency Pro

Update: May 11, 2020

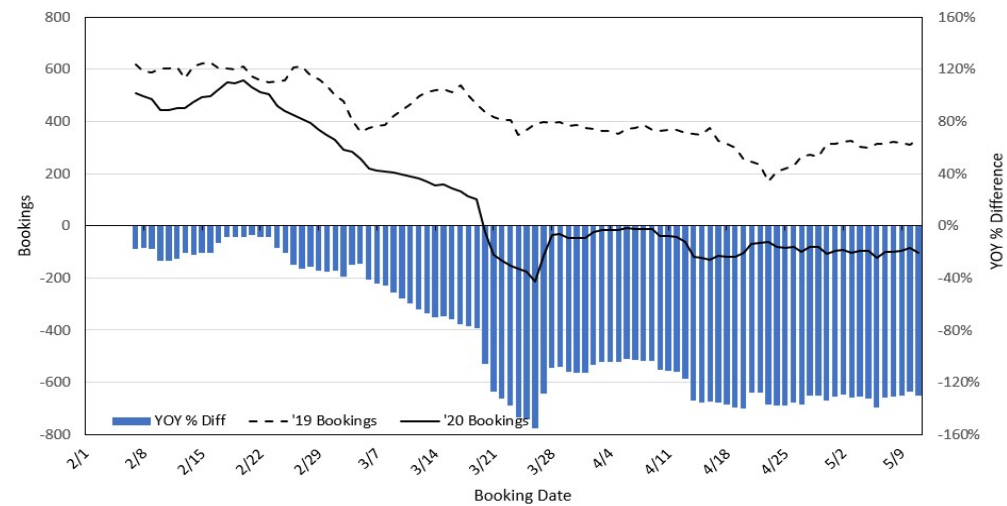
Travel Agency Bookings to Hawaii for Future Arrivals* Based on a 7-day Moving Average, 2020 vs 2019 Canada



*Future Arrivals refers to all arrivals that are 'future' relative to the referenced booking date.
Source: Global Agency Pro

Update: May 11, 2020

Travel Agency Bookings to Hawaii for Future Arrivals* Based on a 7-day Moving Average, 2020 vs 2019 Australia



*Future Arrivals refers to all arrivals that are 'future' relative to the referenced booking date.
Source: Global Agency Pro

Update: May 11, 2020