

HTA COVID-19 UPDATE

(Issued: 5/15/20 @ 3:30pm)

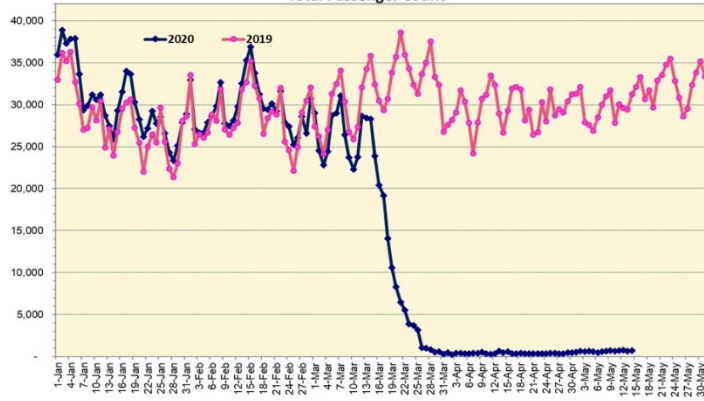
Novel Coronavirus in Hawaii

COVID-19 Positive* Cases

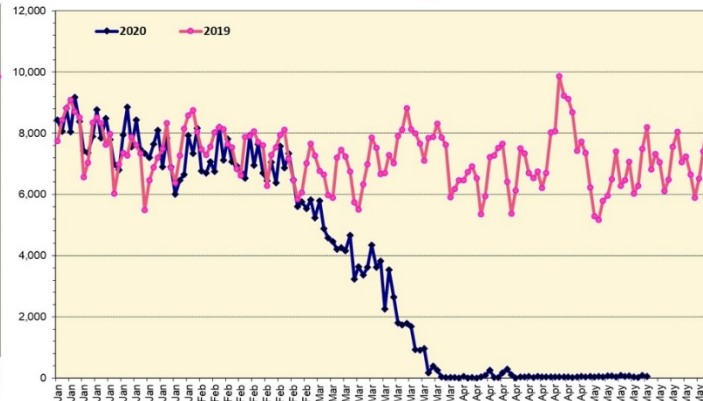
Cumulative totals as of 12:00 noon on May 15, 2020

Total Passenger Count

International Passenger Count

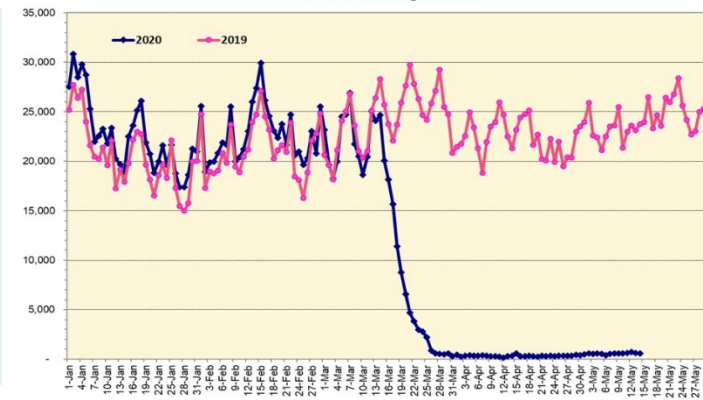


Note: Excludes flights from Canada



Note: Excludes flights from Canada

Domestic Passenger Count



Daily Passenger Count Table

05/14/2020	Domestic	International	Total
Oahu	546	87	633
Maui	0		0
Island of Hawaii	37		37
Kauai	0		0
State	583	87	670

05/15/20 Hawaii Passenger Arrivals by Air Update

Yesterday, 858 people arrived in Hawaii including 252 visitors and 318 residents. Yesterday marked seven weeks since the state's mandatory 14-day self-quarantine started for all passengers arriving in Hawaii from out of state. The quarantine order was expanded on April 1st to include interisland travelers. This table shows the number of people who arrived by air from out of state yesterday and does not include interisland travel.

	Kona	Maui	Oahu	Lihue	Total
Crew	5		108		113
Intended New Resident	5		95		100
Resident	14		304		318
Transit			75		75
Visitor	18		234		252
Grand Total	42	0	816	0	858
Flights	2	0	12	0	14

Market Impact Update: <https://www.dropbox.com/05/15/20 HTA COVID19 Update>

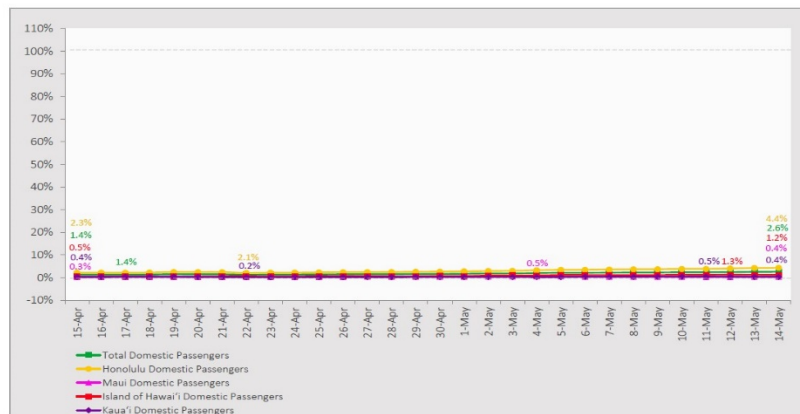
Statewide	Total
Total Cases	638 (1 new)
Released from Isolation†	565
Required Hospitalization	81
Deaths	17
BY COUNTY	Total
Hawaii County	
Total Cases	76
Released from Isolation†	75
Required Hospitalization	1
Deaths	0
Honolulu County	
Total Cases	414
Released from Isolation†	377
Required Hospitalization	56
Deaths	11
Kauai County	
Total Cases	21
Released from Isolation†	20
Required Hospitalization	1
Deaths	0
Maui County	
Total Cases	117
Released from Isolation†	93
Required Hospitalization	22
Deaths	6
HI Residents diagnosed outside of HI	10
County Pending	0

*includes presumptive and confirmed cases, data are preliminary and subject to change; note that CDC provides case counts according to states of residence.

†Isolation should be maintained until at least 3 days (72 hours) after resolution of fever and myalgia without the use of antipyretics OR at least 7 days have passed since symptom onset, whichever is longer.

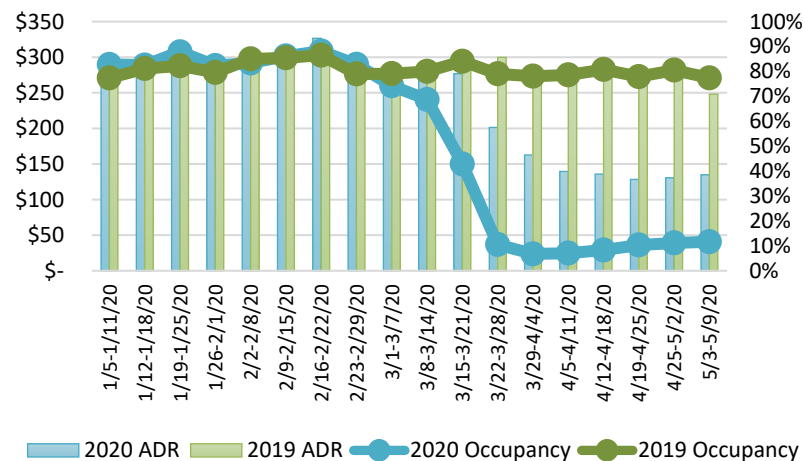
7-Day Domestic by Island Moving Average Daily Passenger Volume

2020 Volume as Percentage of 2019 Volume
Through May 14, 2020



Source: HVCB analysis based on data from DBEDT
Note: Passenger volume figures include both visitors and residents.

State of Hawaii Hotel Performance by Week - 2020 vs 2019



Source: STR, Inc. © Copyright 2020 Hawai'i Tourism Authority

Hawaii Hotel Performance Info:

For the week of May 3 – May 9, 2020

	Occupancy	ADR	RevPAR
State of Hawaii	11.6%	\$ 134.77	\$ 15.68
Oahu	10.3%	\$ 147.54	\$ 15.22
Maui County	11.6%	\$ 139.98	\$ 16.07
Kauai County	9.6%	\$ 112.15	\$ 10.78
Island of Hawaii	19.5%	\$ 105.64	\$ 20.56

Domestic by Island Month-to-Date and Year-to-Date Daily Passenger Volume

2020 Volume versus 2019 Volume
Through May 14, 2020

May 2020 (Month-to-Date through May 14)

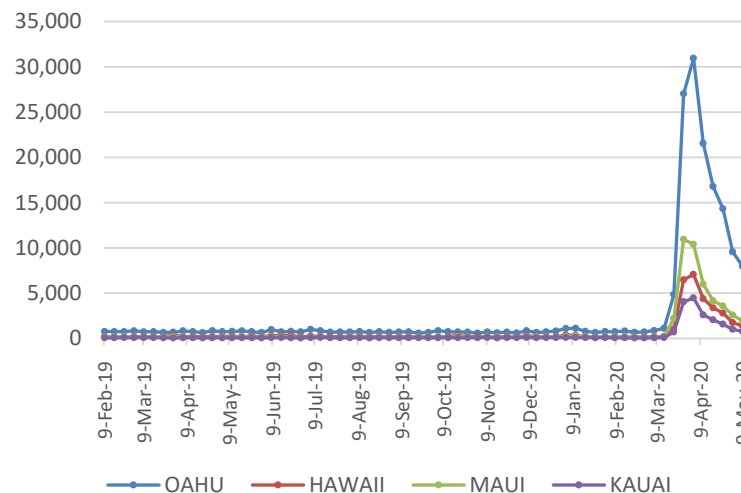
	2020	2019	Volume Change	Percent Change
Honolulu	7,084	176,990	-169,906	-96.0%
Maui County	325	83,957	-83,632	-99.6%
Island of Hawai'i	397	32,956	-32,559	-98.8%
Kaua'i	122	31,498	-31,376	-99.6%
Total	7,928	325,401	-317,473	-97.6%

2020 (Year-to-Date through May 14)

	2020	2019	Volume Change	Percent Change
Honolulu	979,315	1,608,252	-628,937	-39.1%
Maui County	441,905	750,658	-308,753	-41.1%
Island of Hawai'i	217,151	357,112	-139,961	-39.2%
Kaua'i	148,968	265,076	-116,108	-43.8%
Total	1,787,339	2,981,098	-1,193,759	-40.0%

Source: HVCB analysis based on data from DBEDT
Note: Passenger volume figures include both visitors and residents. Total includes other international passengers. 2020 includes one additional day due to Leap Year (February 29th, 2020).

2020 Initial Weekly Unemployment Claims by Island



Weekly Unemployment Initial Claims: May 9, 2020

State of Hawaii	12,299
C&C of Oahu	7,969
Hawaii County	1,389
Maui County	1,935
Kauai County	775
Agent (filed in Hawaii against another state)	231

News Highlights

May 15, 2020

Hawaii News Now: [Senator claims state dragging its feet on thermal screenings, mass testings at airports](#)

Honolulu Star-Advertiser: [Hawaii officials told visitors not to come here on vacation, but some are doing it anyway](#)

Honolulu Star-Advertiser: [Lee Cataluna: Hawaii quarantine enforcement efforts misplaced](#)

Honolulu Star-Advertiser: [Hawaii officials pass the blame for loopholes in mandatory quarantine for incoming passengers](#)

Hawaii Magazine: [Hawaii Malls and Retailers Can Start Reopening Today](#)

Honolulu Civil Beat: [Ige Wants To Extend Hawaii's Travel Quarantine Through June](#)

Maui Now: [Honolulu Mayor's Supports Interisland Travel Quarantine Extension to June 30](#)

West Hawaii Today: [Ironman World Championship postponed](#)

The Garden Island: [Nearly 500 cited for breaking rules](#)

Skift: [Hawaii Intends to Keep Its Travel Quarantine Through June](#)

CNN: [Hawaii discourages tourists from coming to the state through at least the end of June](#)

Helpful Resources

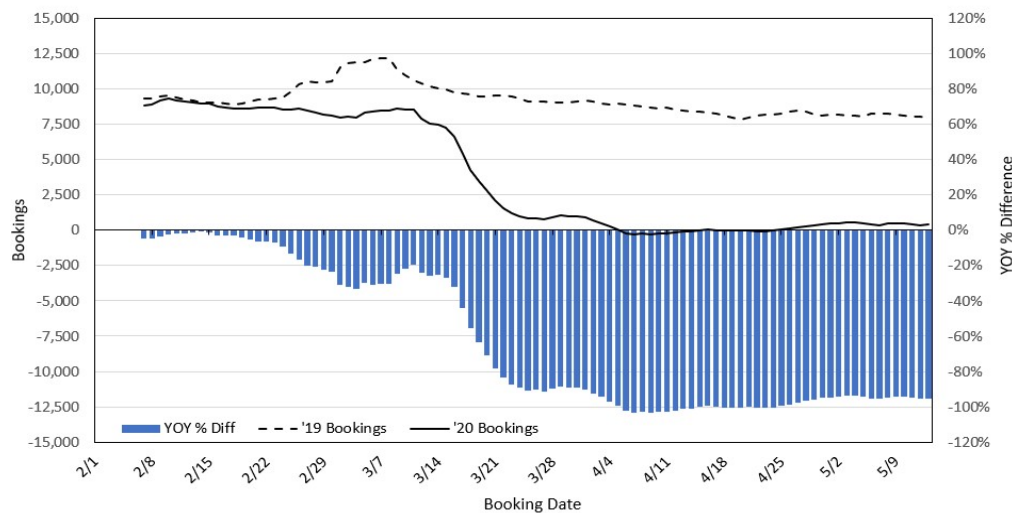
Department of Health
<https://hawaiiocovid19.com/>

Department of Health
<https://health.hawaii.gov/docd/advisories/novel-coronavirus-2019>

Dept. of Business, Economic Development & Tourism
<https://dbedt.hawaii.gov/economic/covid19/>

Department of Transportation
<https://hidot.hawaii.gov/coronavirus/>

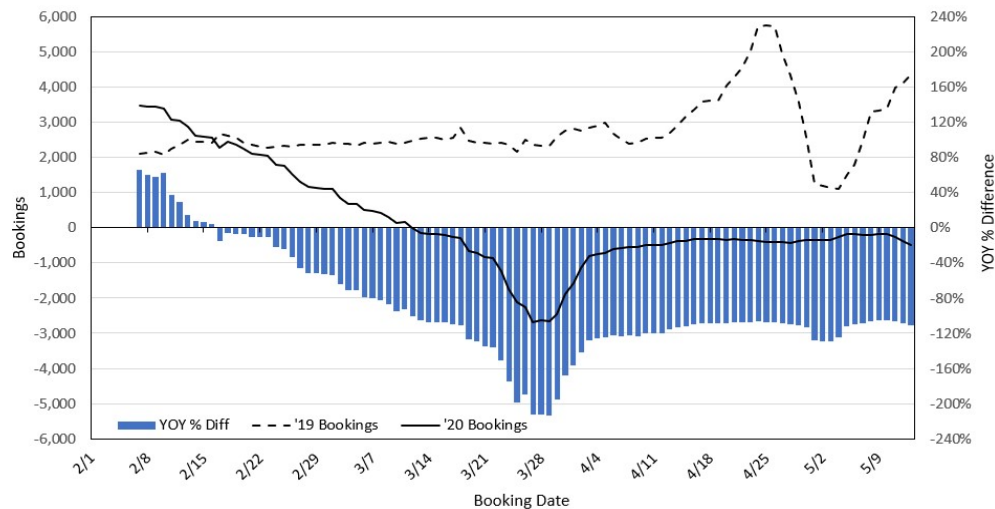
Travel Agency Bookings to Hawaii for Future Arrivals* Based on a 7-day Moving Average, 2020 vs 2019 U.S.



*Future Arrivals refers to all arrivals that are 'future' relative to the referenced booking date.
Source: Global Agency Pro

Update: May 13, 2020

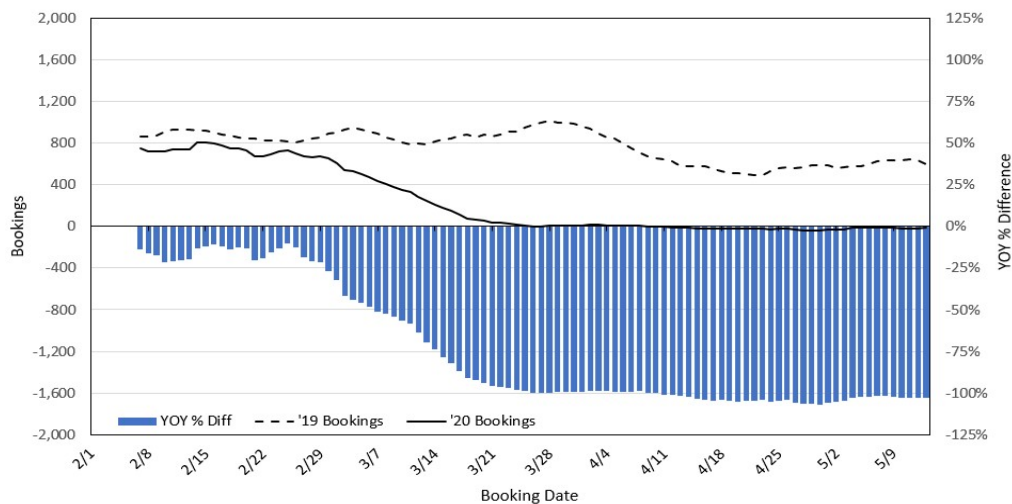
Travel Agency Bookings to Hawaii for Future Arrivals* Based on a 7-day Moving Average, 2020 vs 2019 Japan



*Future Arrivals refers to all arrivals that are 'future' relative to the referenced booking date.
Source: Global Agency Pro

Update: May 13, 2020

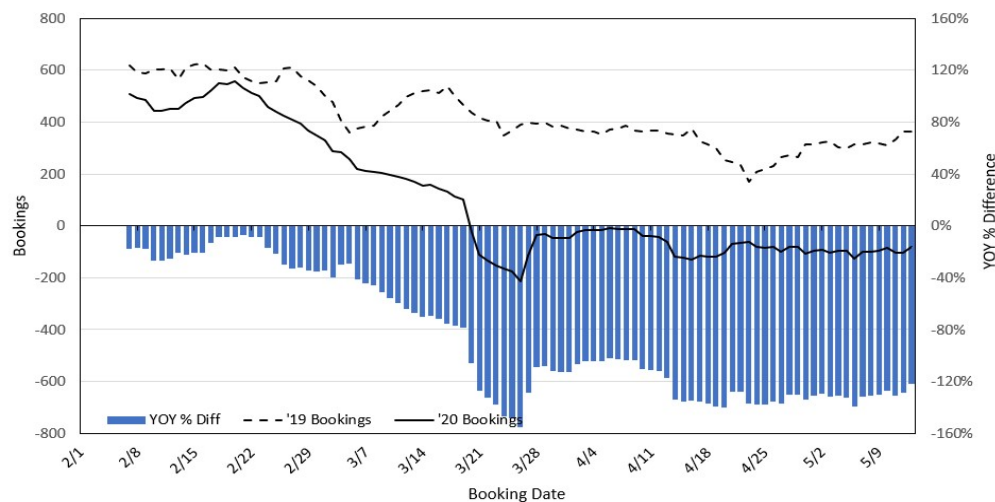
Travel Agency Bookings to Hawaii for Future Arrivals* Based on a 7-day Moving Average, 2020 vs 2019 Canada



*Future Arrivals refers to all arrivals that are 'future' relative to the referenced booking date.
Source: Global Agency Pro

Update: May 13, 2020

Travel Agency Bookings to Hawaii for Future Arrivals* Based on a 7-day Moving Average, 2020 vs 2019 Australia



*Future Arrivals refers to all arrivals that are 'future' relative to the referenced booking date.
Source: Global Agency Pro

Update: May 13, 2020