

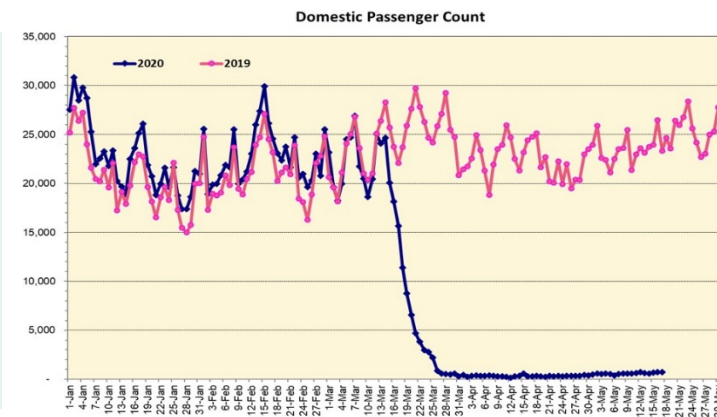
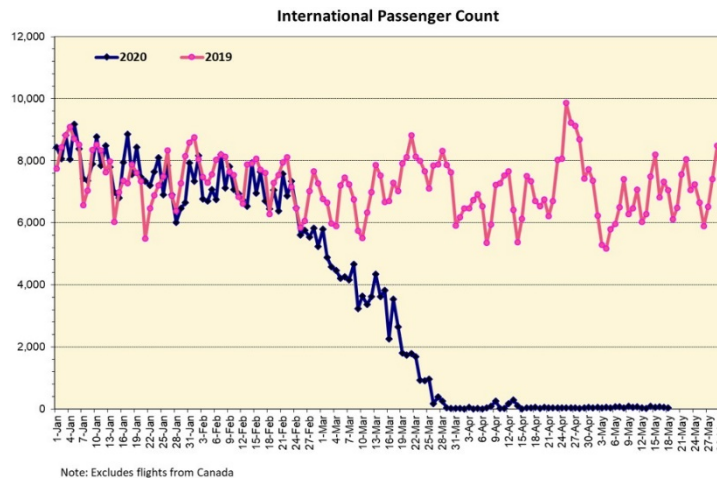
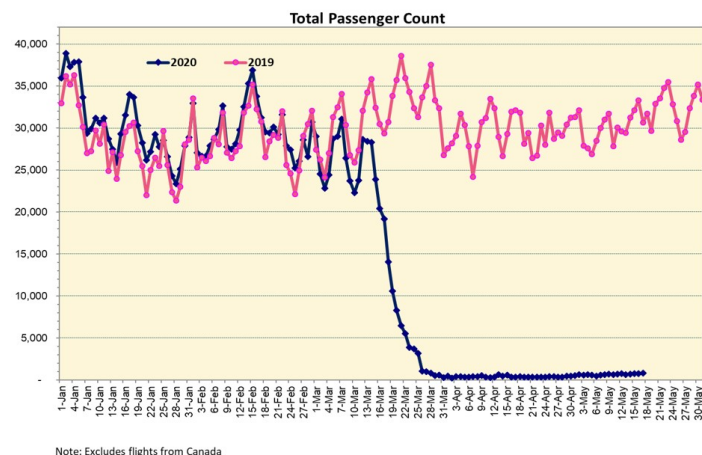
# HTA COVID-19 UPDATE

(Issued: 5/18/20 @ 3:30pm)

## Novel Coronavirus in Hawaii

COVID-19 Positive\* Cases

Cumulative totals as of 12:00 noon on May 18, 2020



### Daily Passenger Count Table

05/17/2020	Domestic	International	Total
Oahu	640	60	700
Maui	37		37
Island of Hawaii	51		51
Kauai	0		0
State	728	60	788

### 05/18/20 Hawaii Passenger Arrivals by Air Update

Yesterday, 1073 people arrived in Hawaii. The state's mandatory 14-day self-quarantine started on March 26th for all passengers arriving in Hawaii from out of state. The quarantine order was expanded on April 1st to include interisland travelers. This table shows the number of people who arrived by air from out of state yesterday and does not include interisland travel. This data was collected from the Hawaii Department of Transportation's (DOT) new Mandatory Travel Declaration Form.

	Kona	Maui	Oahu	Lihue	Total
Crew	11	8	139		158
Intended New Resident			51		51
Resident			57		57
Transit	6	4	75		85
Visitor	34	21	345		400
<b>Grand Total</b>			50		50
Flights	17	12	243		272

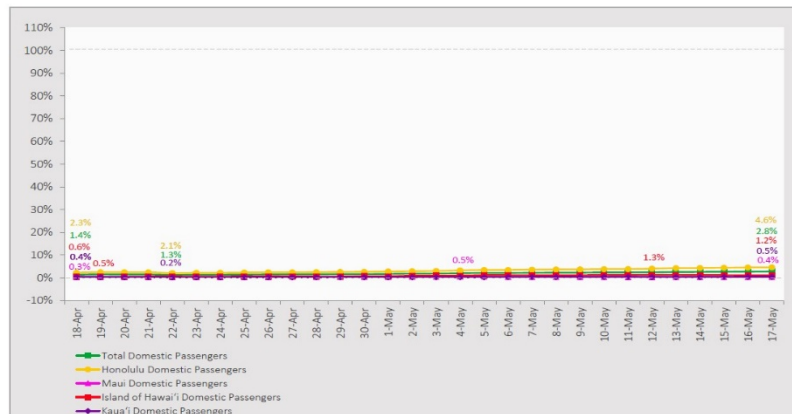
Statewide	Total
Total Cases	640 (0 new)
Released from Isolation†	575
Required Hospitalization	82
Deaths	17
BY COUNTY	Total
Hawaii County	
Total Cases	77
Released from Isolation†	75
Required Hospitalization	1
Deaths	0
Honolulu County	
Total Cases	415
Released from Isolation†	383
Required Hospitalization	57
Deaths	11
Kauai County	
Total Cases	21
Released from Isolation†	20
Required Hospitalization	1
Deaths	0
Maui County	
Total Cases	117
Released from Isolation†	96
Required Hospitalization	22
Deaths	6
HI Residents diagnosed outside of HI	10
County Pending	0

\*includes presumptive and confirmed cases, data are preliminary and subject to change; note that CDC provides case counts according to states of residence.

†Isolation should be maintained until at least 3 days (72 hours) after resolution of fever and myalgia without the use of antipyretics OR at least 7 days have passed since symptom onset, whichever is longer.

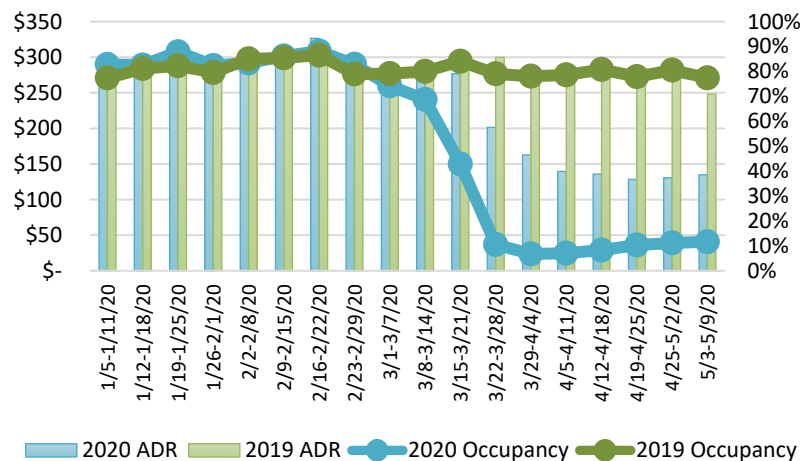
## 7-Day Domestic by Island Moving Average Daily Passenger Volume

2020 Volume as Percentage of 2019 Volume  
Through May 17, 2020



Source: HVCB analysis based on data from DBEDT  
Note: Passenger volume figures include both visitors and residents.

## State of Hawaii Hotel Performance by Week - 2020 vs 2019



Source: STR, Inc. © Copyright 2020 Hawai'i Tourism Authority

## Hawaii Hotel Performance Info:

For the week of May 3 – May 9, 2020

	Occupancy	ADR	RevPAR
State of Hawaii	11.6%	\$ 134.77	\$ 15.68
Oahu	10.3%	\$ 147.54	\$ 15.22
Maui County	11.6%	\$ 139.98	\$ 16.07
Kauai County	9.6%	\$ 112.15	\$ 10.78
Island of Hawaii	19.5%	\$ 105.64	\$ 20.56

## Domestic by Island Month-to-Date and Year-to-Date Daily Passenger Volume

2020 Volume versus 2019 Volume  
Through May 17, 2020

May 2020 (Month-to-Date through May 17)

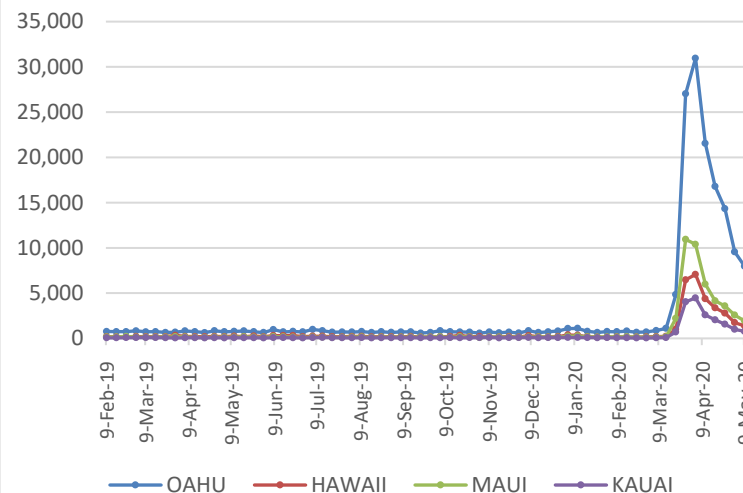
	2020	2019	Volume Change	Percent Change
Honolulu	8,997	215,780	-206,783	-95.8%
Maui County	393	102,206	-101,813	-99.6%
Island of Hawai'i	499	40,729	-40,230	-98.8%
Kaua'i	168	37,468	-37,300	-99.6%
Total	10,057	396,183	-386,126	-97.5%

2020 (Year-to-Date through May 17)

	2020	2019	Volume Change	Percent Change
Honolulu	981,228	1,647,042	-665,814	-40.4%
Maui County	441,973	768,907	-326,934	-42.5%
Island of Hawai'i	217,253	364,885	-147,632	-40.5%
Kaua'i	149,014	271,046	-122,032	-45.0%
Total	1,789,468	3,051,880	-1,262,412	-41.4%

Source: HVCB analysis based on data from DBEDT  
Note: Passenger volume figures include both visitors and residents. Total includes other international passengers. 2020 includes one additional day due to Leap Year (February 29th, 2020).

## 2020 Initial Weekly Unemployment Claims by Island



## Weekly Unemployment Initial Claims: May 9, 2020

State of Hawaii	12,299
C&C of Oahu	7,969
Hawaii County	1,389
Maui County	1,935
Kauai County	775
Agent (filed in Hawaii against another state)	231

## News Highlights

May 18, 2020

**Honolulu Star-Advertiser:** [Hawaii beaches reopen to immense joy from weeks-long isolated residents](#)

**Honolulu Star-Advertiser:** [Nearly 300 out-of-state visitors came to Hawaii by air Saturday](#)

**Honolulu Star-Advertiser:** [COVID-19 restrictions imperil Hawaii vacation rentals](#)

**Maui Now:** [Hawaii Tourism Now: Maui Mayor Michael Victorino Responds to Questions About Maui's Tourism Industry](#)

**Honolulu Civil-Beat:** [The Hotel Tax Should Be Raised — A Lot](#)

**Maui News:** [Thousands see Maui police post on quarantine violation; Colo. visitor arrested](#)

**West Hawaii Today:** [My Turn: Be realistic for a moment](#)

**The Points Guy:** [Hawaii could stay closed to tourists through June: Here's what you need to know](#)

**Travel Weekly:** [Hawaii officials plan to toughen travel rules for visitors](#)

**SF Gate:** [Hawaii extends 14-day room quarantine for tourists](#)

**ABC News:** [US beaches begin reopening, with restrictions varying from state to state](#)

## Helpful Resources

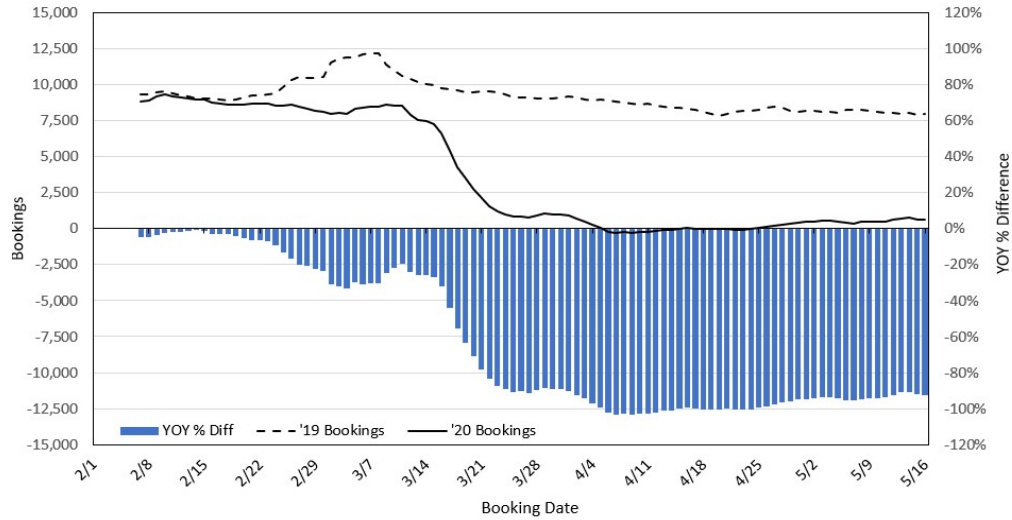
Department of Health  
<https://hawaiiicovid19.com/>

Department of Health  
<https://health.hawaii.gov/docd/advisories/novel-coronavirus-2019>

Dept. of Business, Economic Development & Tourism  
<https://dbedt.hawaii.gov/economic/covid19/>

Department of Transportation  
<https://hidot.hawaii.gov/coronavirus/>

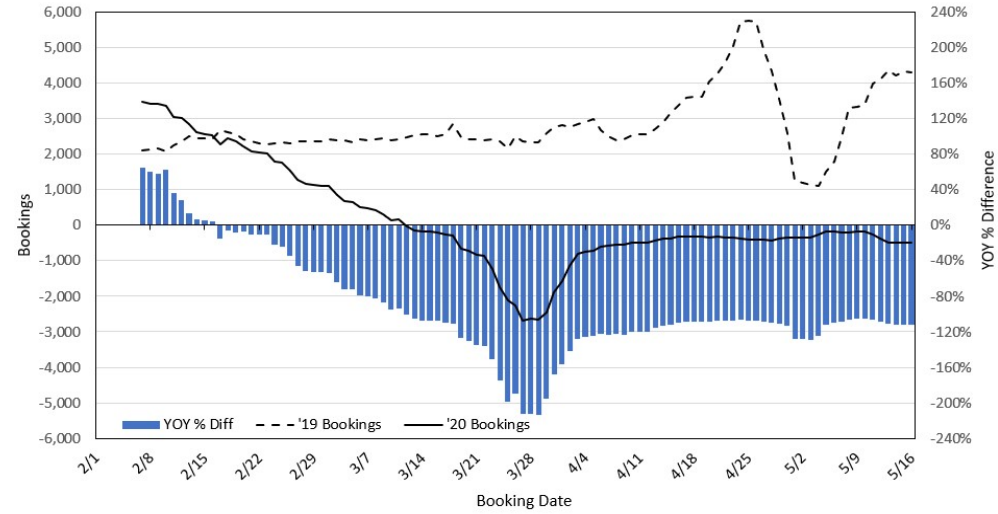
### Travel Agency Bookings to Hawaii for Future Arrivals\* Based on a 7-day Moving Average, 2020 vs 2019 U.S.



\*Future Arrivals refers to all arrivals that are 'future' relative to the referenced booking date.  
Source: Global Agency Pro

Update: May 16, 2020

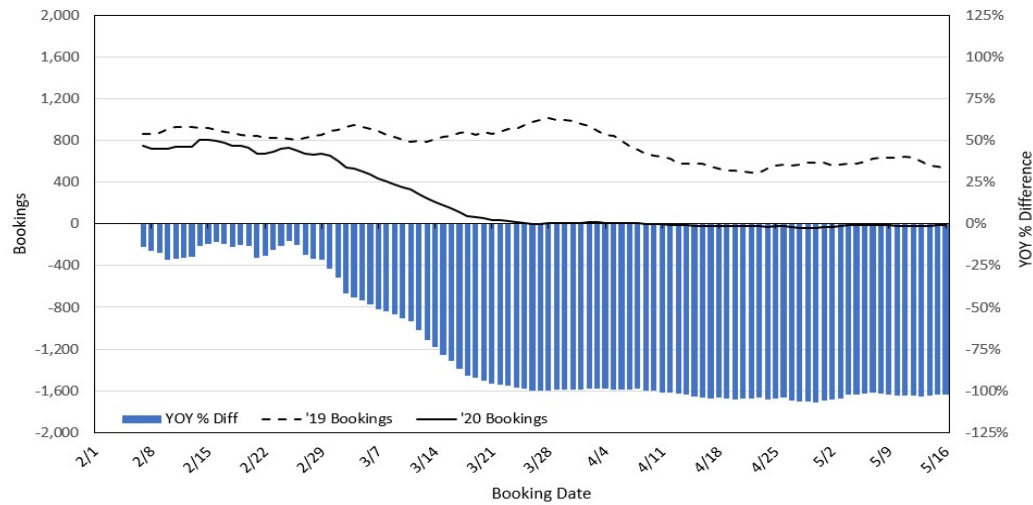
### Travel Agency Bookings to Hawaii for Future Arrivals\* Based on a 7-day Moving Average, 2020 vs 2019 Japan



\*Future Arrivals refers to all arrivals that are 'future' relative to the referenced booking date.  
Source: Global Agency Pro

Update: May 16, 2020

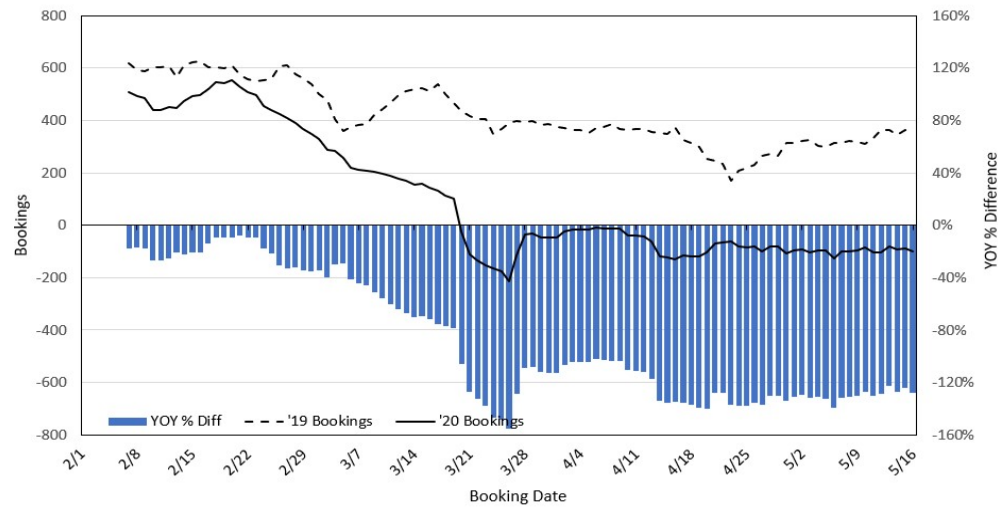
### Travel Agency Bookings to Hawaii for Future Arrivals\* Based on a 7-day Moving Average, 2020 vs 2019 Canada



\*Future Arrivals refers to all arrivals that are 'future' relative to the referenced booking date.  
Source: Global Agency Pro

Update: May 16, 2020

### Travel Agency Bookings to Hawaii for Future Arrivals\* Based on a 7-day Moving Average, 2020 vs 2019 Australia



\*Future Arrivals refers to all arrivals that are 'future' relative to the referenced booking date.  
Source: Global Agency Pro

Update: May 16, 2020