

HTA COVID-19 UPDATE

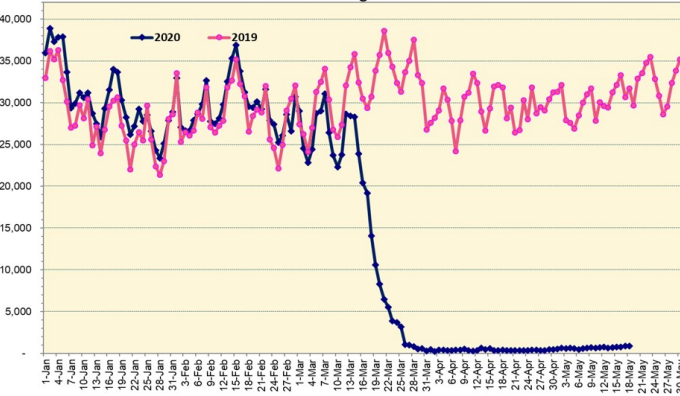
(Issued: 5/19/20 @ 3:30pm)

Novel Coronavirus in Hawaii

COVID-19 Positive* Cases

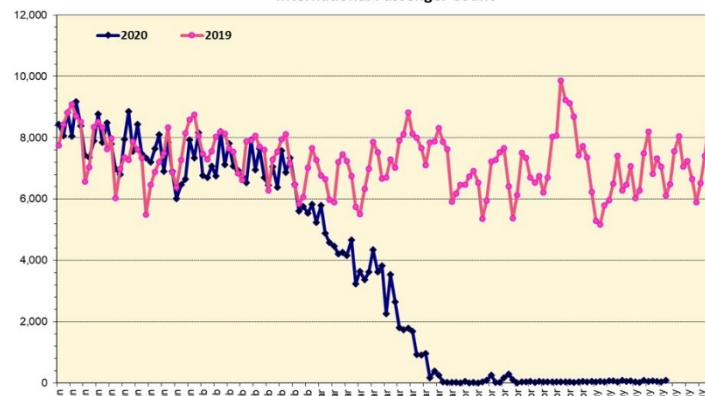
Cumulative totals as of 12:00 noon on May 19, 2020

Total Passenger Count



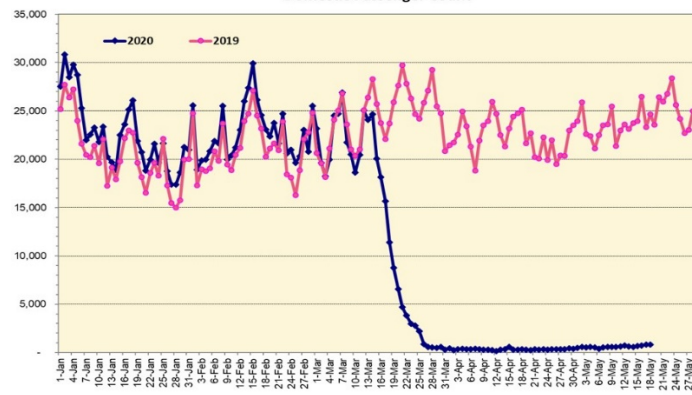
Note: Excludes flights from Canada

International Passenger Count



Note: Excludes flights from Canada

Domestic Passenger Count



Daily Passenger Count Table

05/18/2020	Domestic	International	Total
Oahu	730	45	775
Maui	89		89
Island of Hawaii	0		0
Kauai	0		0
State	819	45	864

05/19/20 Hawaii Passenger Arrivals by Air Update

Yesterday, 1093 people arrived in Hawaii. This table shows the number of people who arrived by air from out of state yesterday and does not include interisland travel. This data was collected from the Hawaii DOT new Mandatory Travel Declaration Form.

	Kona	Maui	Oahu	Lihue	Total
Crew		7	126		133
Exempt			44		44
Military			63		63
Relocate to Hawaii		8	76		84
Returning Resident		48	344		392
Transit			68		68
Visitor		33	276		309
Grand Total	0	96	997	0	1093
Flights	0	1	14	0	15

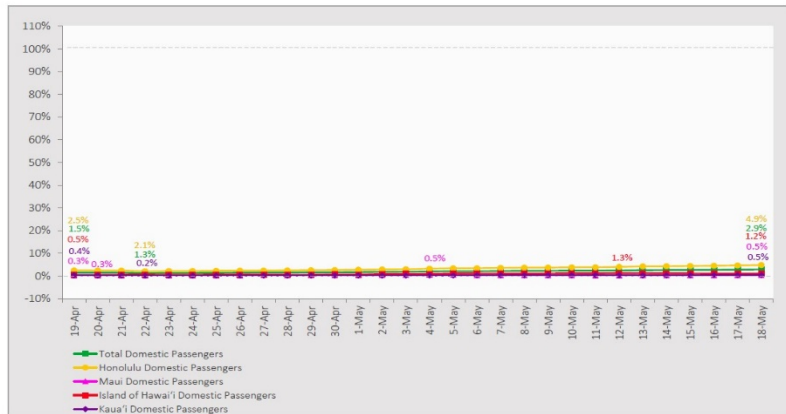
Statewide	Total
Total Cases	641 (1 new)
Released from Isolation†	578
Required Hospitalization	82
Deaths	17
BY COUNTY	Total
Hawaii County	
Total Cases	78
Released from Isolation†	76
Required Hospitalization	1
Deaths	0
Honolulu County	
Total Cases	415
Released from Isolation†	383
Required Hospitalization	57
Deaths	11
Kauai County	
Total Cases	21
Released from Isolation†	20
Required Hospitalization	1
Deaths	0
Maui County	
Total Cases	117
Released from Isolation†	97
Required Hospitalization	22
Deaths	6
HI Residents diagnosed outside of HI	10
County Pending	0

*includes presumptive and confirmed cases, data are preliminary and subject to change; note that CDC provides case counts according to states of residence.

†Isolation should be maintained until at least 3 days (72 hours) after resolution of fever and myalgia without the use of antipyretics OR at least 7 days have passed since symptom onset, whichever is longer.

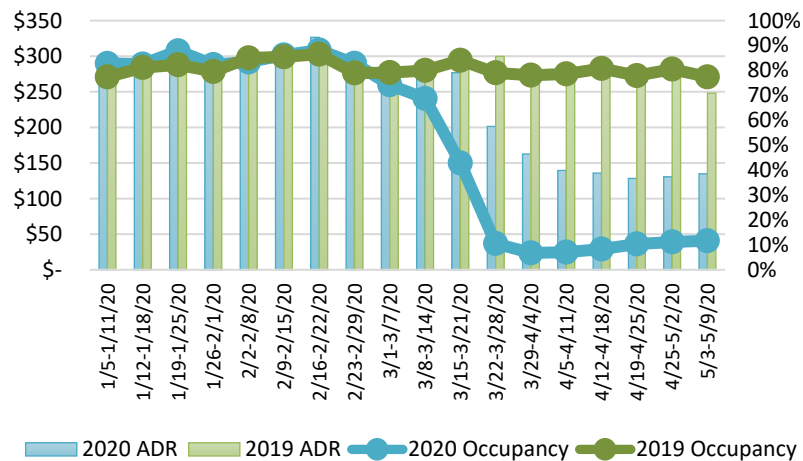
7-Day Domestic by Island Moving Average Daily Passenger Volume

2020 Volume as Percentage of 2019 Volume
Through May 18, 2020



Source: HVCB analysis based on data from DBEDT
Note: Passenger volume figures include both visitors and residents.

State of Hawaii Hotel Performance by Week - 2020 vs 2019



Source: STR, Inc. © Copyright 2020 Hawai'i Tourism Authority

Hawaii Hotel Performance Info:

For the week of May 3 – May 9, 2020

	Occupancy	ADR	RevPAR
State of Hawaii	11.6%	\$ 134.77	\$ 15.68
Oahu	10.3%	\$ 147.54	\$ 15.22
Maui County	11.6%	\$ 139.98	\$ 16.07
Kauai County	9.6%	\$ 112.15	\$ 10.78
Island of Hawaii	19.5%	\$ 105.64	\$ 20.56

Domestic by Island Month-to-Date and Year-to-Date Daily Passenger Volume

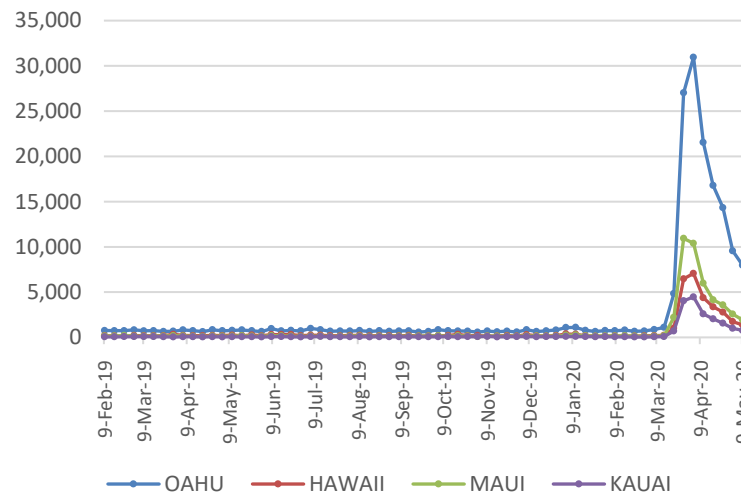
2020 Volume versus 2019 Volume
Through May 18, 2020

May 2020 (Month-to-Date through May 18)				
	2020	2019	Volume Change	Percent Change
Honolulu	9,798	229,620	-219,822	-95.7%
Maui County	482	108,753	-108,271	-99.6%
Island of Hawai'i	499	43,544	-43,045	-98.9%
Kaua'i	168	40,734	-40,566	-99.6%
Total	10,947	422,651	-411,704	-97.4%

2020 (Year-to-Date through May 18)				
	2020	2019	Volume Change	Percent Change
Honolulu	982,029	1,660,882	-678,853	-40.9%
Maui County	442,062	775,454	-333,392	-43.0%
Island of Hawai'i	217,253	367,700	-150,447	-40.9%
Kaua'i	149,014	274,312	-125,298	-45.7%
Total	1,790,358	3,078,348	-1,287,990	-41.8%

Source: HVCB analysis based on data from DBEDT
Note: Passenger volume figures include both visitors and residents. Total includes other international passengers. 2020 includes one additional day due to Leap Year (February 29th, 2020).

2020 Initial Weekly Unemployment Claims by Island



Weekly Unemployment Initial Claims: May 9, 2020

State of Hawaii	12,299
C&C of Oahu	7,969
Hawaii County	1,389
Maui County	1,935
Kauai County	775
Agent (filed in Hawaii against another state)	231

News Highlights

May 19, 2020

Honolulu Star-Advertiser: [Gov. David Ige faces the dilemma of eventually reopening to both tourists and new infections](#)

Honolulu Star-Advertiser: [Gov. David Ige unveils four-phase reopening strategy for Hawaii's economy](#)

KHON2: [More than 1,000 people arrived in Hawaii Sunday](#)

Honolulu Star-Advertiser: [Hawaii residents keep eye out for visitors who break quarantine](#)

KITV: [Maui Police searching for 31-year-old Colorado woman for allegedly violating quarantine](#)

KITV: [Hanauma Bay could be re-opening soon](#)

The Garden Island: [14,000 counted on the beach](#)

West Hawaii Today: [Kim reopens beaches; Governor details four-phase plan for reopening, extends tourist quarantine until June 30](#)

Hawaii Public Radio: [Hawaii Updates: 70,000 Jobless Claims Pending; No New Cases; Facing Shortfall, State Borrows \\$600M](#)

Bloomberg: ['Don't Come': Hawaii Enforces Strict Lockdown Measures](#)

Helpful Resources

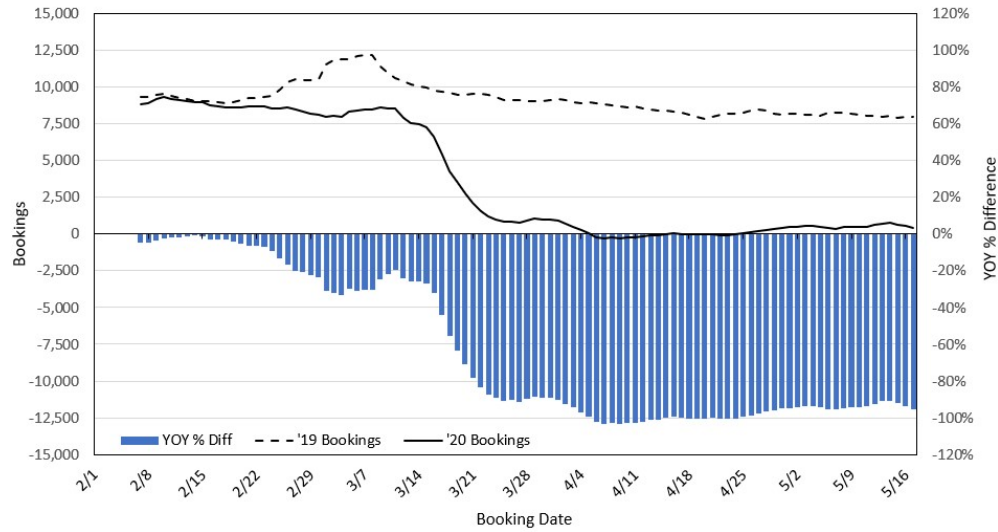
Department of Health
<https://hawaii.covid19.com/>

Department of Health
<https://health.hawaii.gov/docd/advisories/novel-coronavirus-2019>

Dept. of Business, Economic Development & Tourism
<https://dbedt.hawaii.gov/economic/covid19/>

Department of Transportation
<https://hidot.hawaii.gov/coronavirus/>

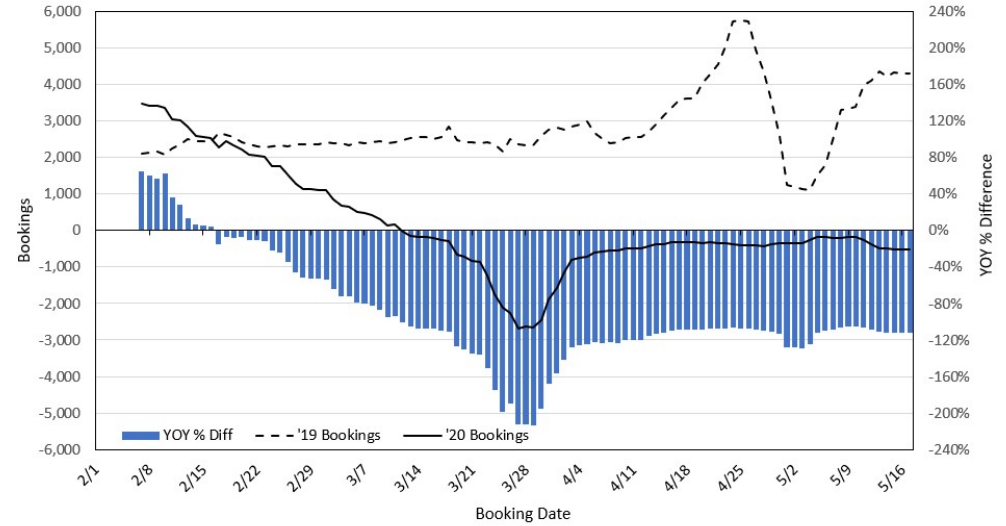
Travel Agency Bookings to Hawaii for Future Arrivals* Based on a 7-day Moving Average, 2020 vs 2019 U.S.



*Future Arrivals refers to all arrivals that are 'future' relative to the referenced booking date.
Source: Global Agency Pro

Update: May 17, 2020

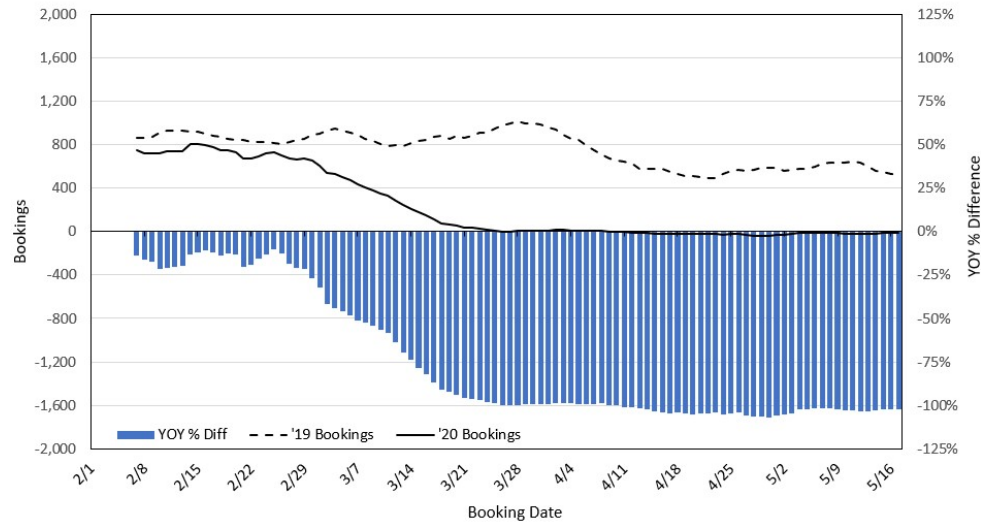
Travel Agency Bookings to Hawaii for Future Arrivals* Based on a 7-day Moving Average, 2020 vs 2019 Japan



*Future Arrivals refers to all arrivals that are 'future' relative to the referenced booking date.
Source: Global Agency Pro

Update: May 17, 2020

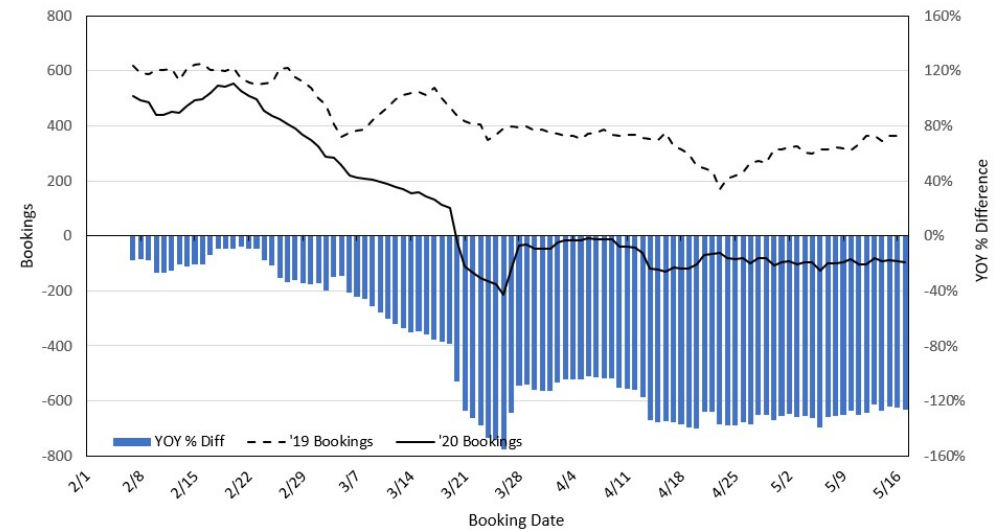
Travel Agency Bookings to Hawaii for Future Arrivals* Based on a 7-day Moving Average, 2020 vs 2019 Canada



*Future Arrivals refers to all arrivals that are 'future' relative to the referenced booking date.
Source: Global Agency Pro

Update: May 17, 2020

Travel Agency Bookings to Hawaii for Future Arrivals* Based on a 7-day Moving Average, 2020 vs 2019 Australia



*Future Arrivals refers to all arrivals that are 'future' relative to the referenced booking date.
Source: Global Agency Pro

Update: May 17, 2020