

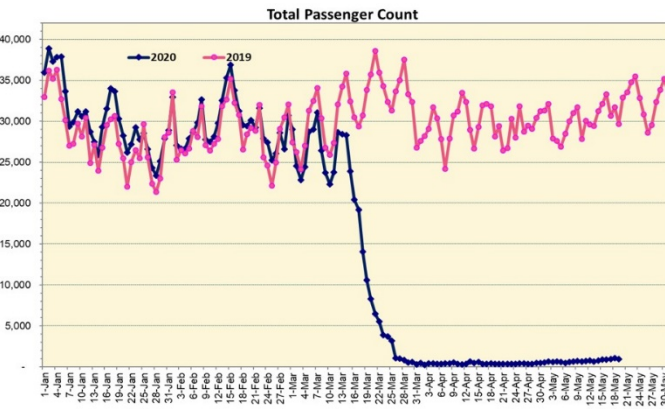
HTA COVID-19 UPDATE

(Issued: 5/20/20 @ 5:30pm)

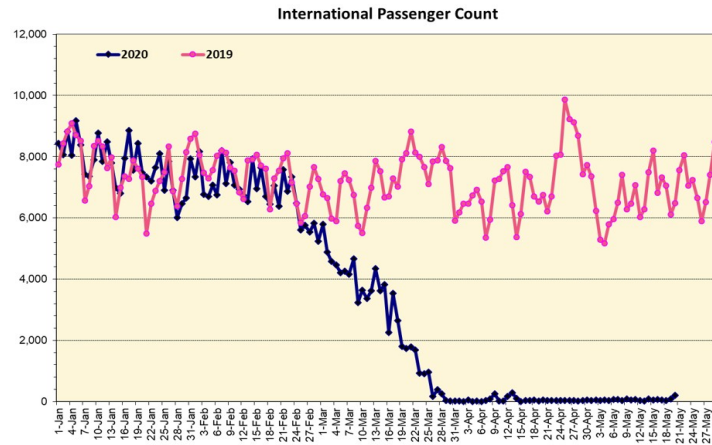
Novel Coronavirus in Hawaii

COVID-19 Positive* Cases

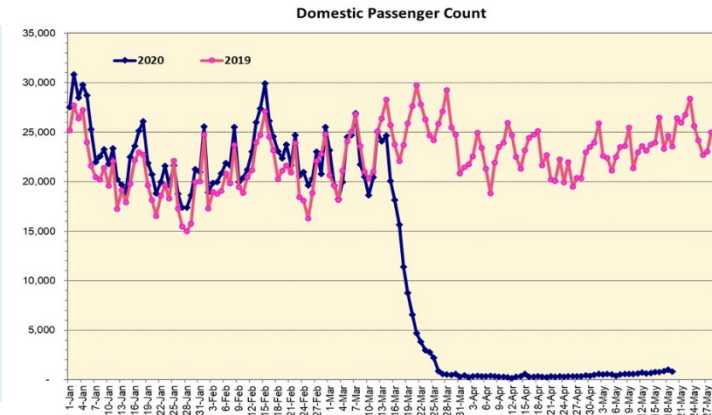
Cumulative totals as of 12:00 noon on May 20, 2020



Note: Excludes flights from Canada



Note: Excludes flights from Canada



Daily Passenger Count Table

05/19/2020	Domestic	International	Total
Oahu	777	96	873
Maui	0		0
Island of Hawaii	39		39
Kauai	0		0
State	816	96	912

05/20/20 Hawaii Passenger Arrivals by Air Update

Yesterday, 954 people arrived in Hawaii. This table shows the number of people who arrived by air from out of state yesterday and does not include interisland travel. This data was collected from the Hawaii DOT new Mandatory Travel Declaration Form.

	Kona	Maui	Oahu	Lihue	Total
Crew	4		122	2	128
Exempt			47		47
Military			41		41
Relocate to Hawaii	4		78		82
Returning Resident	8		291		299
Transit			119		119
Visitor	27		211		238
Grand Total	43	0	909	2	954
Flights	1	0	12	1	14

Statewide	Total
Total Cases	643 (2 new)
Released from Isolation+	578
Required Hospitalization	82
Deaths	17
BY COUNTY	Total
Hawaii County	
Total Cases	79
Released from Isolation+	76
Required Hospitalization	1
Deaths	0
Honolulu County	
Total Cases	416
Released from Isolation+	385
Required Hospitalization	57
Deaths	11
Kauai County	
Total Cases	21
Released from Isolation+	20
Required Hospitalization	1
Deaths	0
Maui County	
Total Cases	117
Released from Isolation+	97
Required Hospitalization	22
Deaths	6
HI Residents diagnosed outside of HI	10
County Pending	0

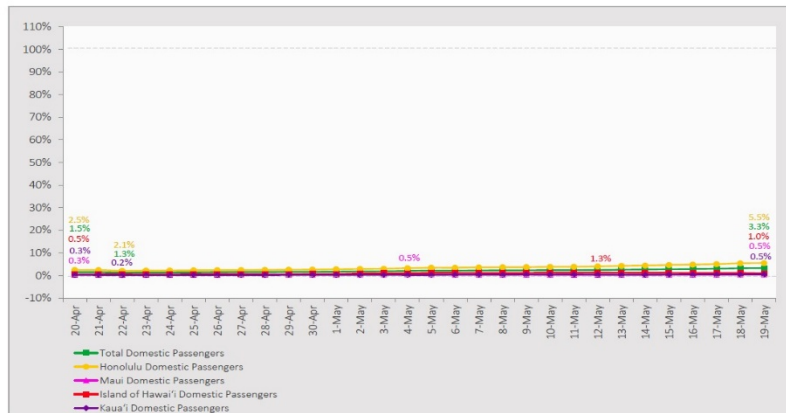
*includes presumptive and confirmed cases, data are preliminary and subject to change; note that CDC provides case counts according to states of residence.

+Isolation should be maintained until at least 3 days (72 hours) after resolution of fever and myalgia without the use of antipyretics OR at least 7 days have passed since symptom onset, whichever is longer.

Market Impact Update: <https://www.dropbox.com/05/20/20 HTA COVID19 Update>

7-Day Domestic by Island Moving Average Daily Passenger Volume

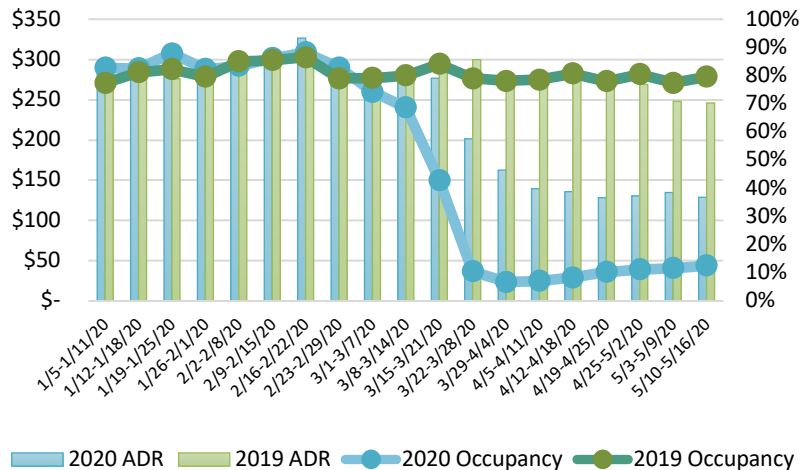
2020 Volume as Percentage of 2019 Volume
Through May 19, 2020



Source: HVCB analysis based on data from DBEDT

Note: Passenger volume figures include both visitors and residents.

State of Hawai'i Hotel Performance by Week - 2020 vs 2019



Source: STR, Inc. © Copyright 2020 Hawai'i Tourism Authority

Hawaii Hotel Performance Info:

For the week of May 10 – May 16, 2020

	Occupancy	ADR	RevPAR
State of Hawaii	12.6%	\$ 128.78	\$ 16.21
Oahu	11.7%	\$ 137.15	\$ 15.99
Maui County	10.4%	\$ 137.29	\$ 14.31
Kauai County	13.7%	\$ 115.14	\$ 15.73
Island of Hawaii	18.5%	\$ 108.86	\$ 20.11

Domestic by Island Month-to-Date and Year-to-Date Daily Passenger Volume

2020 Volume versus 2019 Volume
Through May 19, 2020

May 2020 (Month-to-Date through May 19)

	2020	2019	Volume Change	Percent Change
Honolulu	11,086	243,353	-232,267	-95.4%
Maui County	480	115,200	-114,720	-99.6%
Island of Hawai'i	538	45,847	-45,309	-98.8%
Kaua'i	168	41,566	-41,398	-99.6%
Total	12,272	445,966	-433,694	-97.2%

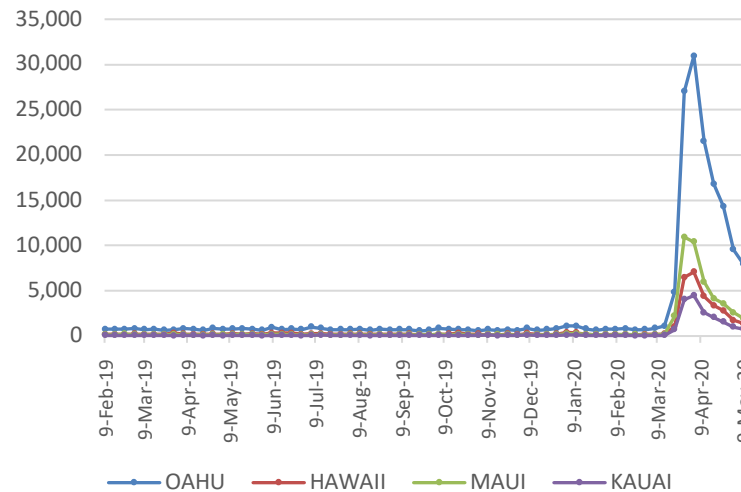
2020 (Year-to-Date through May 19)

	2020	2019	Volume Change	Percent Change
Honolulu	983,317	1,674,615	-691,298	-41.3%
Maui County	442,060	781,901	-339,841	-43.5%
Island of Hawai'i	217,292	370,003	-152,711	-41.3%
Kaua'i	149,014	275,144	-126,130	-45.8%
Total	1,791,683	3,101,663	-1,309,980	-42.2%

Source: HVCB analysis based on data from DBEDT

Note: Passenger volume figures include both visitors and residents. Total includes other international passengers. 2020 includes one additional day due to Leap Year (February 29th, 2020).

2020 Initial Weekly Unemployment Claims by Island



Weekly Unemployment Initial Claims: May 9, 2020

State of Hawaii	12,299
C&C of Oahu	7,969
Hawaii County	1,389
Maui County	1,935
Kauai County	775
Agent (filed in Hawaii against another state)	231

News Highlights

May 20, 2020

Honolulu Star-Advertiser: [Visitor counts rise to highest level since Hawaii quarantine began](#)

Honolulu Star-Advertiser: [Letters: Vacation rentals better for visitors, economy; Remove quarantine for local, interisland travel; End rail at Aala Park](#)

Honolulu Star-Advertiser: [State Senate Special Committee met to discuss coronavirus procedures](#)

Honolulu Star-Advertiser: [Group hopes to see new economy emerge based on Hawaiian values](#)

Honolulu Star-Advertiser: [Column: Better tourism with visitor green fees](#)

KHON: [Exclusive coronavirus Town Hall with Hawaii leaders, law makers will address local and federal response to coronavirus outbreak](#)

The Garden Island: [Kawakami asks to reopen early](#)

West Hawaii Today: [County beaches to reopen, for real this time](#)

FOX Business: [Coronavirus pandemic knocks out large sections of Hawaii's economy](#)

Helpful Resources

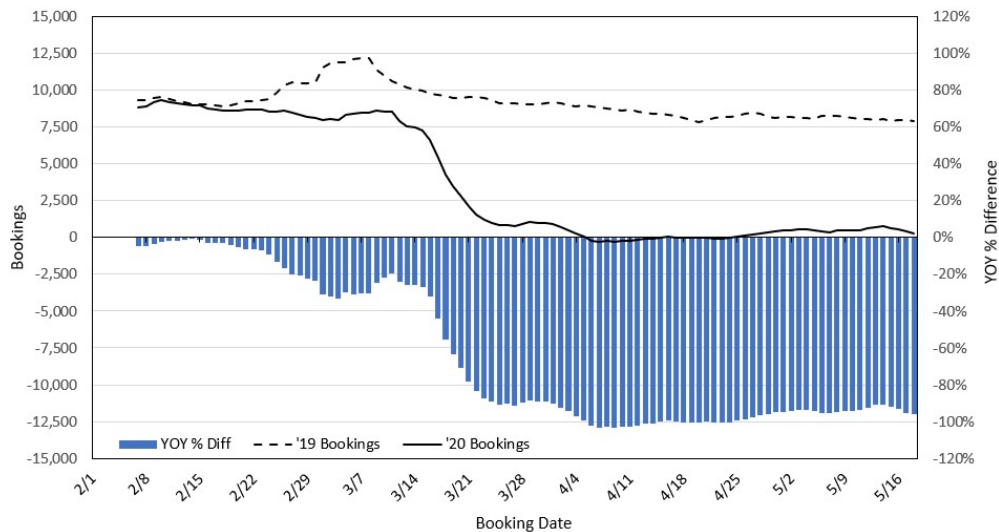
Department of Health
<https://hawaiiicovid19.com/>

Department of Health
<https://health.hawaii.gov/docd/advisories/novel-coronavirus-2019>

Dept. of Business, Economic Development & Tourism
<https://dbedt.hawaii.gov/economic/covid19/>

Department of Transportation
<https://hidot.hawaii.gov/coronavirus/>

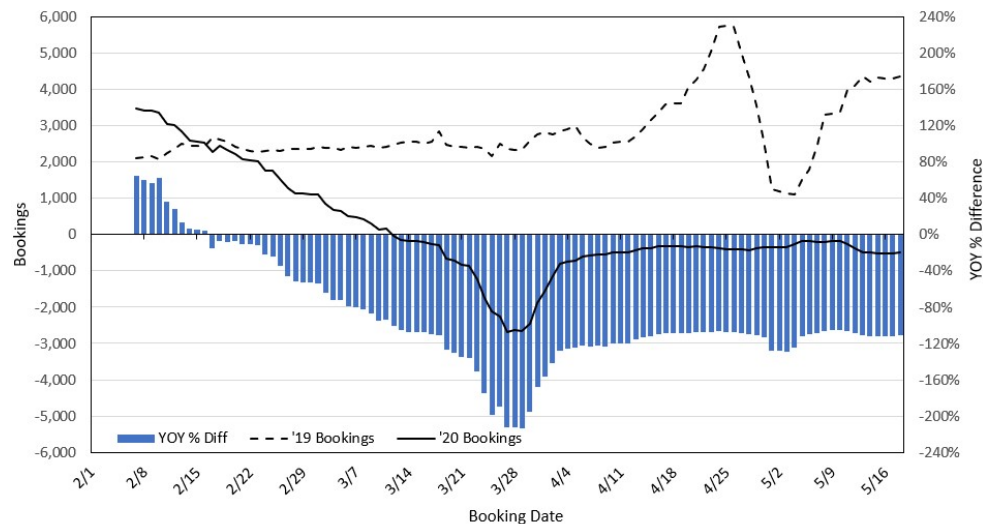
Travel Agency Bookings to Hawaii for Future Arrivals* Based on a 7-day Moving Average, 2020 vs 2019 U.S.



*Future Arrivals refers to all arrivals that are 'future' relative to the referenced booking date.
Source: Global Agency Pro

Update: May 18, 2020

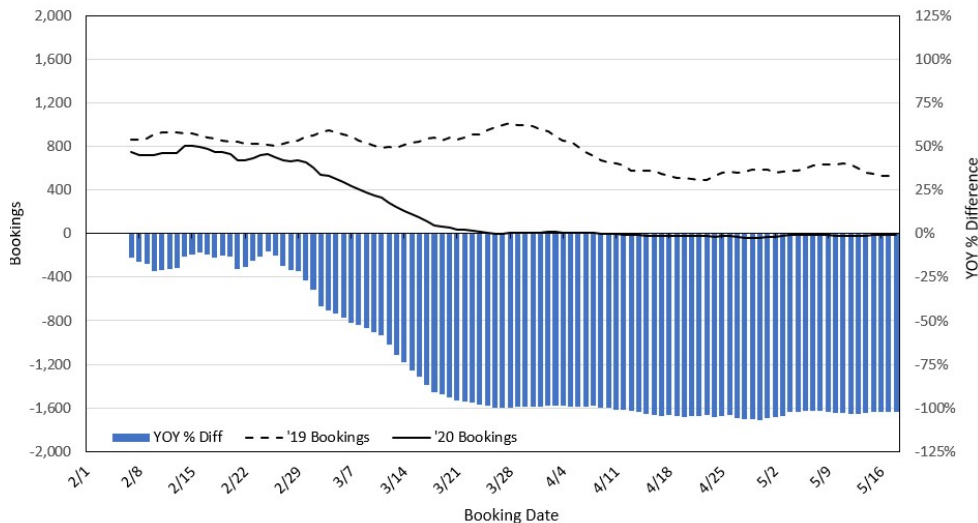
Travel Agency Bookings to Hawaii for Future Arrivals* Based on a 7-day Moving Average, 2020 vs 2019 Japan



*Future Arrivals refers to all arrivals that are 'future' relative to the referenced booking date.
Source: Global Agency Pro

Update: May 18, 2020

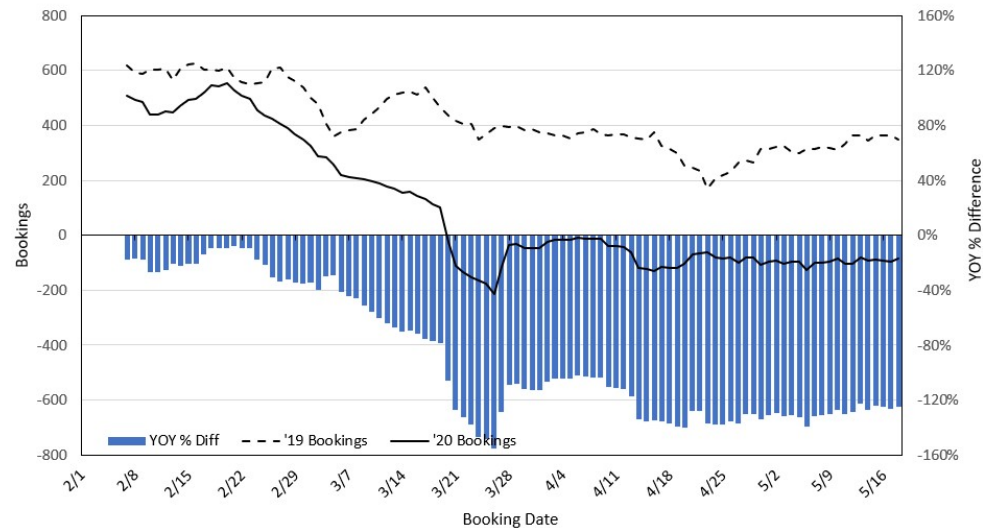
Travel Agency Bookings to Hawaii for Future Arrivals* Based on a 7-day Moving Average, 2020 vs 2019 Canada



*Future Arrivals refers to all arrivals that are 'future' relative to the referenced booking date.
Source: Global Agency Pro

Update: May 18, 2020

Travel Agency Bookings to Hawaii for Future Arrivals* Based on a 7-day Moving Average, 2020 vs 2019 Australia



*Future Arrivals refers to all arrivals that are 'future' relative to the referenced booking date.
Source: Global Agency Pro

Update: May 18, 2020