

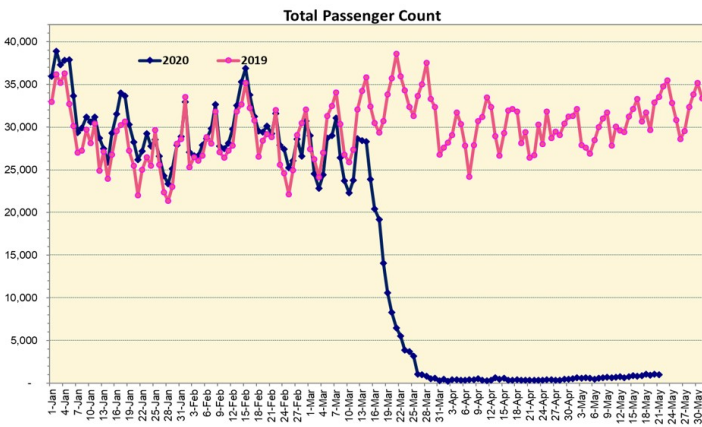
# HTA COVID-19 UPDATE

(Issued: 5/22/20 @ 3:30pm)

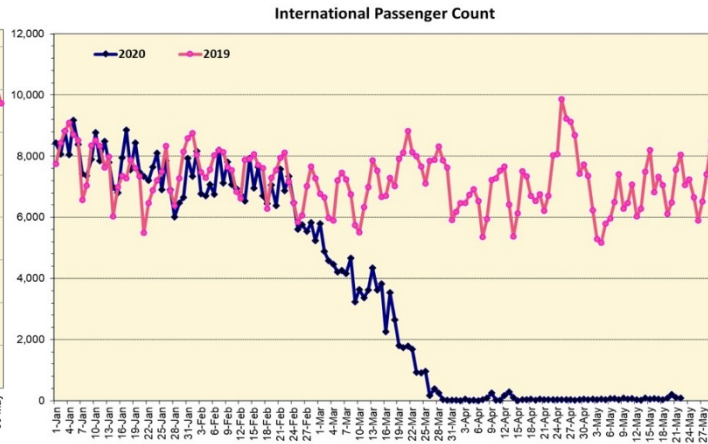
## Novel Coronavirus in Hawaii

COVID-19 Positive\* Cases

Cumulative totals as of 12:00 noon on May 22, 2020



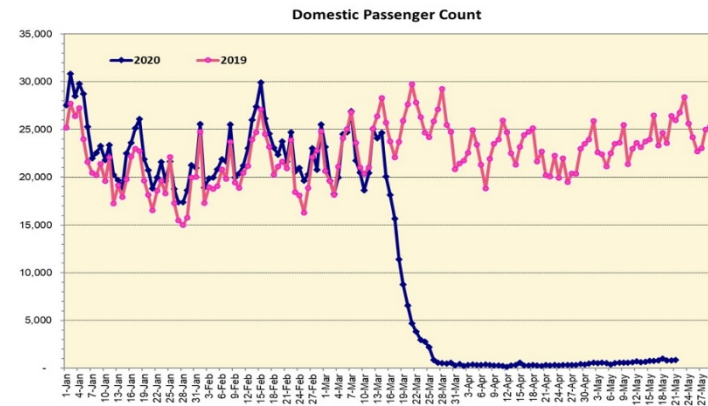
Note: Excludes flights from Canada



Note: Excludes flights from Canada

### Daily Passenger Count Table

05/21/2020	Domestic	International	Total
Oahu	817	103	920
Maui	0		0
Island of Hawaii	45		45
Kauai	0		0
State	862	103	965



### 05/22/20 Hawaii Passenger Arrivals by Air Update

Yesterday, 1203 people arrived in Hawaii. This table shows the number of people who arrived by air from out of state yesterday and does not include interisland travel. This data was collected from the Hawaii DOT new Mandatory Travel Declaration Form.

	Kona	Maui	Oahu	Lihue	Total
Crew	12		128		140
Exempt	1		150		151
Military			75		75
Relocate to Hawaii			31		31
Returning Resident	4		107		111
Transit	20		312		332
Visitor	27		336		363
<b>Grand Total</b>	<b>64</b>	<b>0</b>	<b>1139</b>	<b>0</b>	<b>1203</b>
<b>Flights</b>	<b>4</b>	<b>0</b>	<b>13</b>	<b>0</b>	<b>17</b>

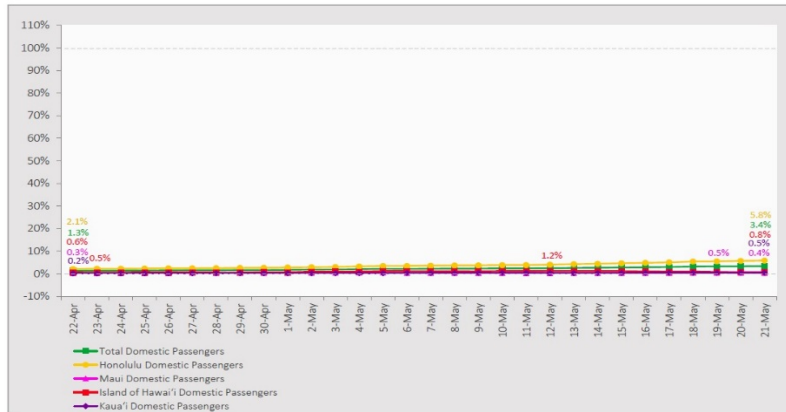
Statewide	Total
Total Cases	<b>642 (0 new)</b>
Released from Isolation+	585
Required Hospitalization	84
Deaths	17
BY COUNTY	Total
Hawaii County	
Total Cases	81
Released from Isolation+	76
Required Hospitalization	1
Deaths	0
Honolulu County	
Total Cases	414
Released from Isolation+	385
Required Hospitalization	59
Deaths	11
Kauai County	
Total Cases	20
Released from Isolation+	19
Required Hospitalization	1
Deaths	0
Maui County	
Total Cases	117
Released from Isolation+	105
Required Hospitalization	22
Deaths	6
<b>HI Residents diagnosed outside of HI</b>	<b>10</b>
<b>County Pending</b>	<b>0</b>

\*includes presumptive and confirmed cases, data are preliminary and subject to change; note that CDC provides case counts according to states of residence.

+Isolation should be maintained until at least 3 days (72 hours) after resolution of fever and myalgia without the use of antipyretics OR at least 7 days have passed since symptom onset, whichever is longer.

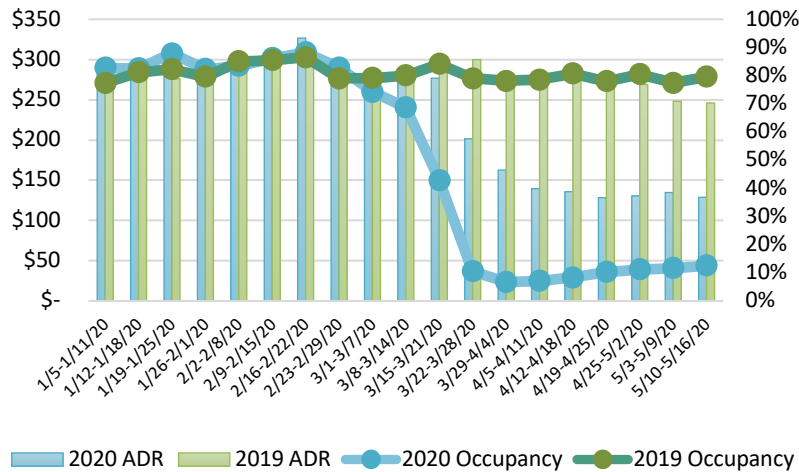
## 7-Day Domestic by Island Moving Average Daily Passenger Volume

2020 Volume as Percentage of 2019 Volume  
Through May 21, 2020



Source: HVCB analysis based on data from DBEDT  
Note: Passenger volume figures include both visitors and residents.

## State of Hawai'i Hotel Performance by Week - 2020 vs 2019



Source: STR, Inc. © Copyright 2020 Hawai'i Tourism Authority

## Hawaii Hotel Performance Info:

For the week of May 10 – May 16, 2020

	Occupancy	ADR	RevPAR
State of Hawaii	12.6%	\$ 128.78	\$ 16.21
Oahu	11.7%	\$ 137.15	\$ 15.99
Maui County	10.4%	\$ 137.29	\$ 14.31
Kauai County	13.7%	\$ 115.14	\$ 15.73
Island of Hawaii	18.5%	\$ 108.86	\$ 20.11

## Domestic by Island Month-to-Date and Year-to-Date Daily Passenger Volume

2020 Volume versus 2019 Volume  
Through May 21, 2020

May 21/20 (Month-to-Date through May 21)

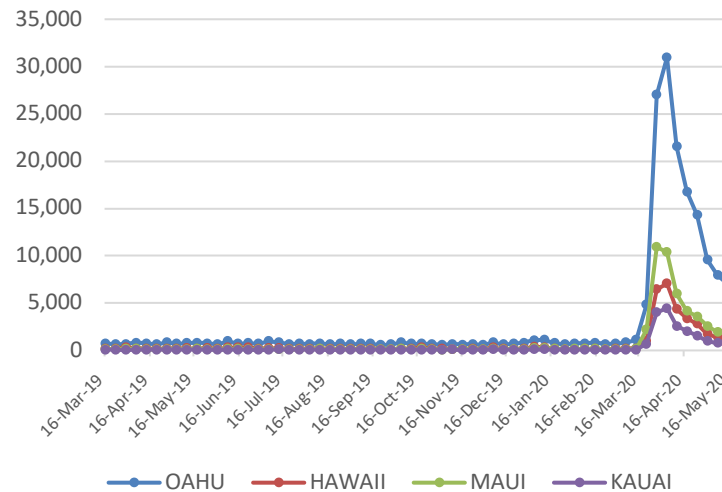
	2020	2019	Volume Change	Percent Change
Honolulu	12,672	269,425	-256,753	-95.3%
Maui County	518	127,405	-126,887	-99.6%
Island of Hawai'i	555	51,380	-50,825	-98.9%
Kaua'i	201	45,950	-45,749	-99.6%
Total	13,946	494,160	-480,214	-97.2%

2020 (Year-to-Date through May 21)

	2020	2019	Volume Change	Percent Change
Honolulu	984,903	1,700,687	-715,784	-42.1%
Maui County	442,098	794,106	-352,008	-44.3%
Island of Hawai'i	217,309	375,536	-158,227	-42.1%
Kaua'i	149,047	279,528	-130,481	-46.7%
Total	1,793,357	3,149,857	-1,356,500	-43.1%

Source: HVCB analysis based on data from DBEDT  
Note: Passenger volume figures include both visitors and residents. Total includes other international passengers. 2020 includes one additional day due to Leap Year (February 29th, 2020).

## 2020 Initial Weekly Unemployment Claims by Island



## Weekly Unemployment Initial Claims: May 16, 2020

State of Hawaii	10,986
C&C of Oahu	7,014
Hawaii County	1,284
Maui County	1,786
Kauai County	706
Agent (filed in Hawaii against another state)	196

## News Highlights

May 22, 2020

**Honolulu Star-Advertiser:** [Letters: Airlines must enforce mask-wearing rules; Tourists overrun Hawaii with low-cost vacations; Charge top dollar for mandatory testing](#)

**Honolulu Star-Advertiser:** [Hawaii hotel occupancy plunged 88% in April compared with 2019](#)

**Honolulu Star-Advertiser:** [Two women defy Hawaii traveler quarantine, including one who got a job in Laie](#)

**Honolulu Star-Advertiser:** [Without intervention, Hawaii government could run out of operating funds next year](#)

**Maui Now:** [Hawaii Tourism Now: Terry Fischer Shares His Thoughts on Hawaii's Tourism Industry](#)

**Hawaii Tribune-Herald:** [Ige mulls lifting quarantine for interisland travel](#)

**The Garden Island:** [Green light to reopen](#)

**Hawaii Public Radio:** [Authorities Struggle To Enforce Quarantine On Vacation Rental Occupants](#)

**Honolulu Civil Beat:** [Ige's Economic Chief Accuses Senators Of Harassment](#)

## Helpful Resources

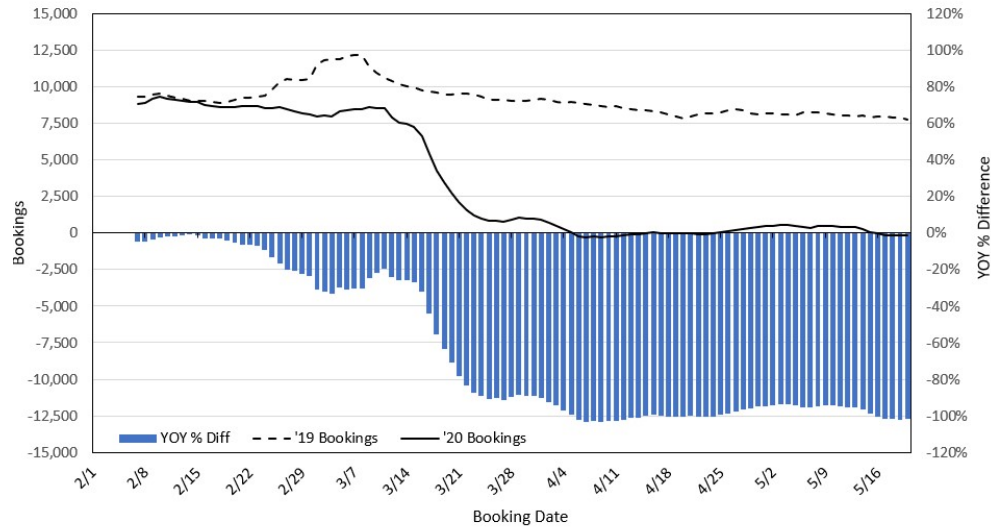
Department of Health  
<https://hawaiiicovid19.com/>

Department of Health  
<https://health.hawaii.gov/docd/advisories/novel-coronavirus-2019>

Dept. of Business, Economic Development & Tourism  
<https://dbedt.hawaii.gov/economic/covid19/>

Department of Transportation  
<https://hidot.hawaii.gov/coronavirus/>

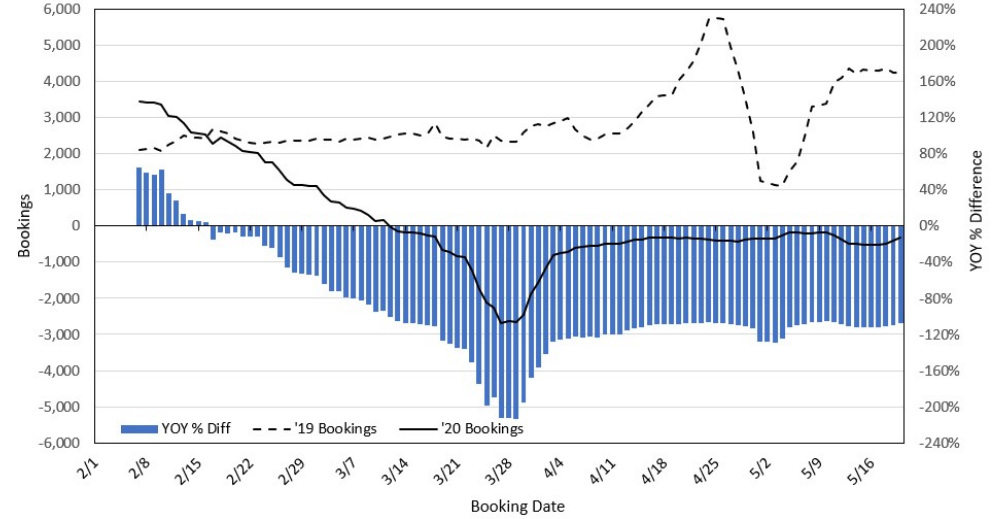
### Travel Agency Bookings to Hawaii for Future Arrivals\* Based on a 7-day Moving Average, 2020 vs 2019 U.S.



\*Future Arrivals refers to all arrivals that are 'future' relative to the referenced booking date.  
Source: Global Agency Pro

Update: May 20, 2020

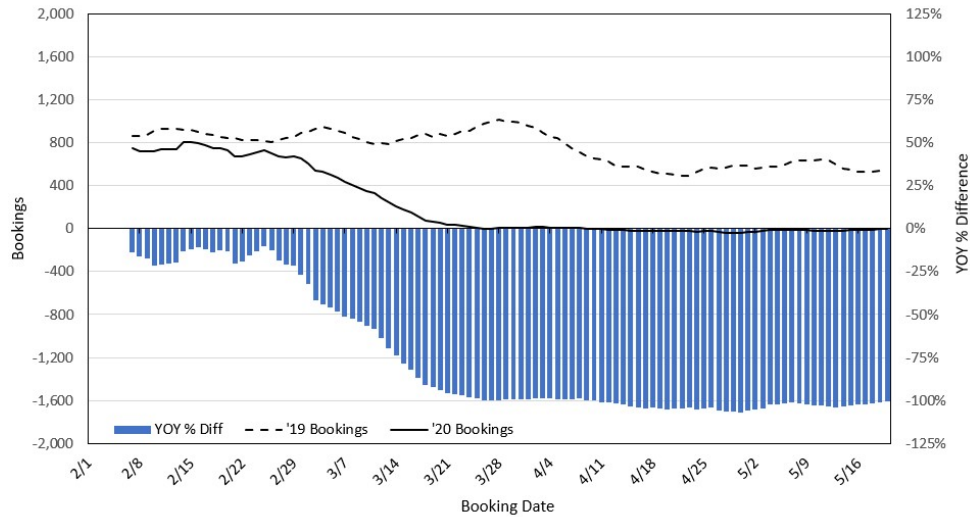
### Travel Agency Bookings to Hawaii for Future Arrivals\* Based on a 7-day Moving Average, 2020 vs 2019 Japan



\*Future Arrivals refers to all arrivals that are 'future' relative to the referenced booking date.  
Source: Global Agency Pro

Update: May 20, 2020

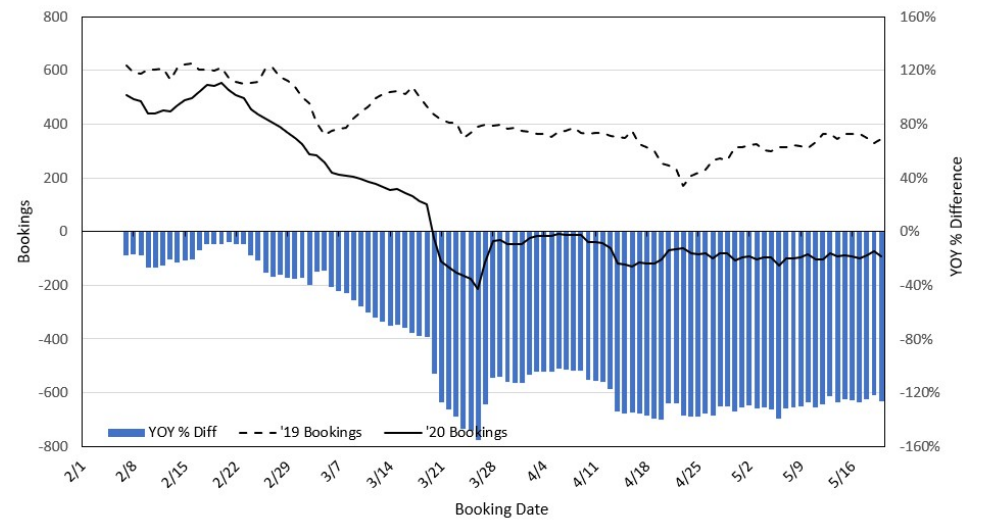
### Travel Agency Bookings to Hawaii for Future Arrivals\* Based on a 7-day Moving Average, 2020 vs 2019 Canada



\*Future Arrivals refers to all arrivals that are 'future' relative to the referenced booking date.  
Source: Global Agency Pro

Update: May 20, 2020

### Travel Agency Bookings to Hawaii for Future Arrivals\* Based on a 7-day Moving Average, 2020 vs 2019 Australia



\*Future Arrivals refers to all arrivals that are 'future' relative to the referenced booking date.  
Source: Global Agency Pro

Update: May 20, 2020