

# HTA COVID-19 UPDATE

(Issued: 5/27/20 @ 4:30pm)

## Novel Coronavirus in Hawaii

COVID-19 Positive\* Cases

Cumulative totals as of 12:00 noon on May 27, 2020

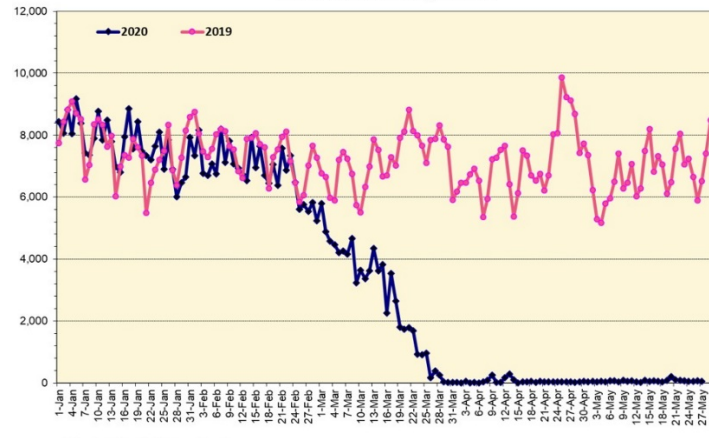
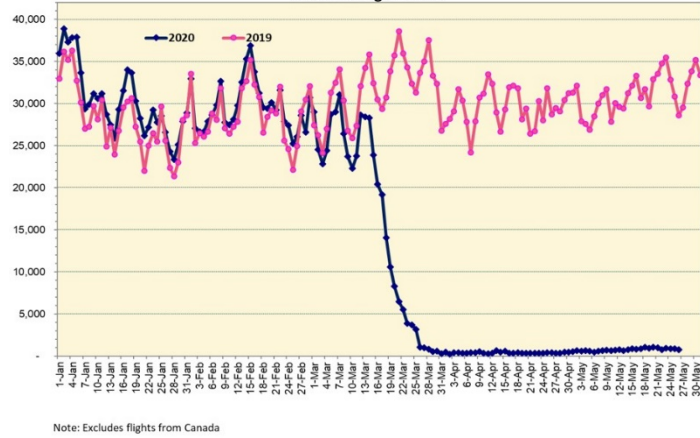
Statewide	Total
Total Cases	<b>644</b> (1 new)
Released from Isolation†	600
Required Hospitalization	83
Deaths	17
BY COUNTY	Total
Hawaii County	
Total Cases	82
Released from Isolation†	81
Required Hospitalization	1
Deaths	0
Honolulu County	
Total Cases	414
Released from Isolation†	394
Required Hospitalization	58
Deaths	11
Kauai County	
Total Cases	20
Released from Isolation†	19
Required Hospitalization	1
Deaths	0
Maui County	
Total Cases	118
Released from Isolation†	106
Required Hospitalization	22
Deaths	6
HI Residents diagnosed outside of HI	10
County Pending	0

\*includes presumptive and confirmed cases, data are preliminary and subject to change; note that CDC provides case counts according to states of residence.

†Isolation should be maintained until at least 3 days (72 hours) after resolution of fever and myalgia without the use of antipyretics OR at least 7 days have passed since symptom onset, whichever is longer.

Total Passenger Count

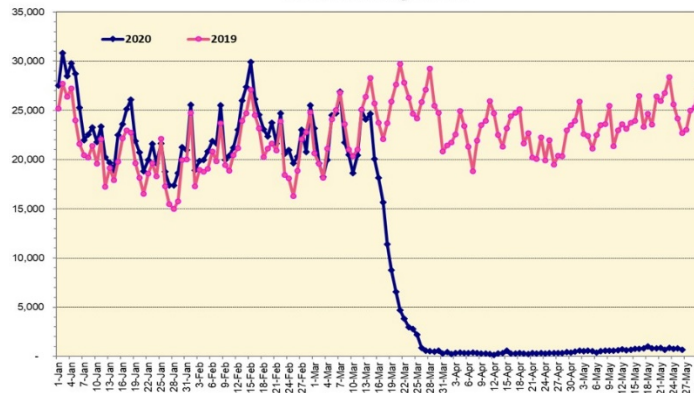
International Passenger Count



Note: Excludes flights from Canada

Note: Excludes flights from Canada

Domestic Passenger Count



### Daily Passenger Count Table

05/26/2020	Domestic	International	Total
Oahu	654	67	721
Maui	0		0
Island of Hawaii	36		36
Kauai	0		0
State	690	67	757

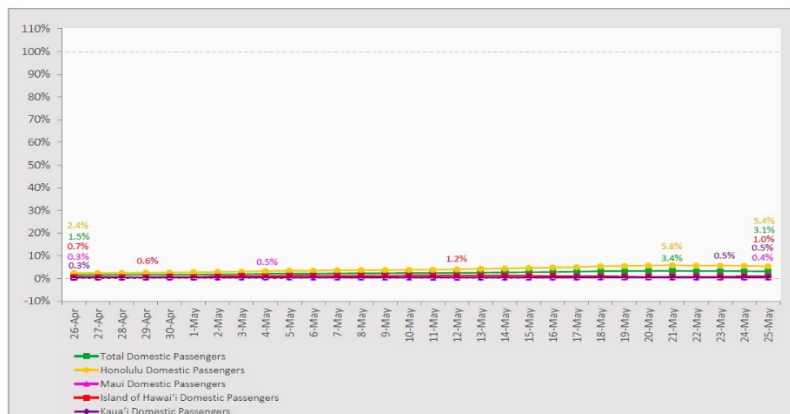
### 05/27/20 Hawaii Passenger Arrivals by Air Update

Yesterday, 869 people arrived in Hawaii. This table shows the number of people who arrived by air from out of state yesterday and does not include interisland travel. This data was collected from the Hawaii DOT new Mandatory Travel Declaration Form.

	Kona	Maui	Oahu	Lihue	Total
Crew	2		110		112
Exempt			58		58
Military			52		52
Relocate to Hawaii			44		44
Returning Resident	2		44		46
Transit	15		307		322
Visitor	19		216		235
<b>Grand Total</b>	<b>38</b>	<b>0</b>	<b>831</b>	<b>0</b>	<b>869</b>
<b>Flights</b>	<b>1</b>	<b>0</b>	<b>13</b>	<b>0</b>	<b>14</b>

### 7-Day Domestic by Island Moving Average Daily Passenger Volume

2020 Volume as Percentage of 2019 Volume  
Through May 25, 2020



Source: HVCB analysis based on data from DBEDT  
Note: Passenger volume figures include both visitors and residents.

### Domestic by Island Month-to-Date and Year-to-Date Daily Passenger Volume

2020 Volume versus 2019 Volume  
Through May 25, 2020

May 25 (Month-to-Date through May 25)

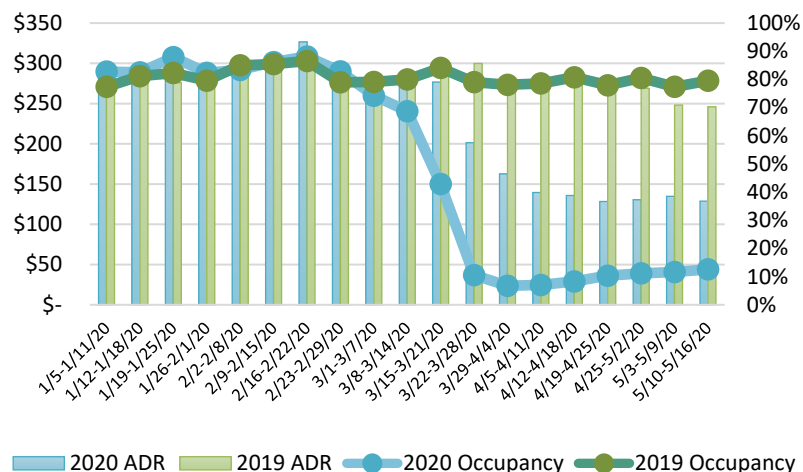
	2020	2019	Volume Change	Percent Change
Honolulu	15,492	325,146	-309,654	-95.2%
Maui County	673	155,524	-154,851	-99.6%
Island of Hawai'i	673	64,829	-64,156	-99.0%
Kaua'i	250	56,183	-55,933	-99.6%
Total	17,088	601,682	-584,594	-97.2%

2020 (Year-to-Date through May 25)

	2020	2019	Volume Change	Percent Change
Honolulu	987,723	1,756,408	-768,685	-43.8%
Maui County	442,253	822,225	-379,972	-46.2%
Island of Hawai'i	217,427	388,985	-171,558	-44.1%
Kaua'i	149,096	289,761	-140,665	-48.5%
Total	1,796,499	3,257,379	-1,460,880	-44.8%

Source: HVCB analysis based on data from DBEDT  
Note: Passenger volume figures include both visitors and residents. Total includes other international passengers. 2020 includes one additional day due to Leap Year (February 29th, 2020).

### State of Hawai'i Hotel Performance by Week - 2020 vs 2019



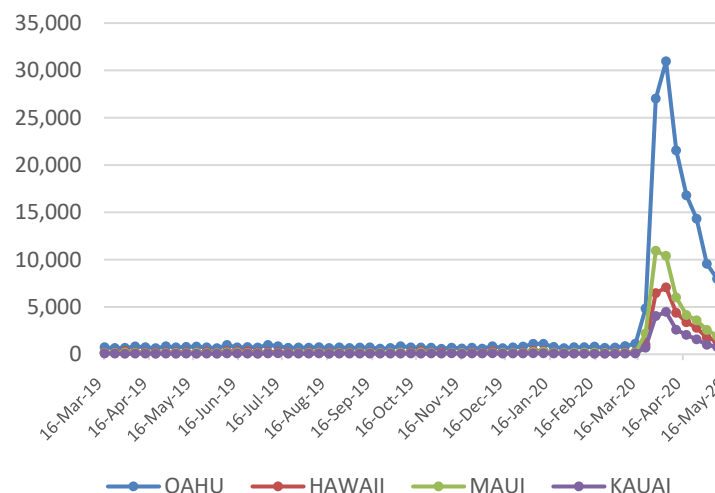
Source: STR, Inc. © Copyright 2020 Hawai'i Tourism Authority

### Hawaii Hotel Performance Info:

For the week of May 10 – May 16, 2020

	Occupancy	ADR	RevPAR
State of Hawaii	12.6%	\$ 128.78	\$ 16.21
Oahu	11.7%	\$ 137.15	\$ 15.99
Maui County	10.4%	\$ 137.29	\$ 14.31
Kauai County	13.7%	\$ 115.14	\$ 15.73
Island of Hawaii	18.5%	\$ 108.86	\$ 20.11

### 2020 Initial Weekly Unemployment Claims by Island



### Weekly Unemployment Initial Claims: May 16, 2020

State of Hawaii	10,986
C&C of Oahu	7,014
Hawaii County	1,284
Maui County	1,786
Kauai County	706
Agent (filed in Hawaii against another state)	196

## News Highlights

May 27, 2020

**Hawaii News Now:** [How empty are the hotels still open in Hawaii? The occupancy rate in April was just 9%](#)

**KITV4:** [Condotels ramp up security to ensure visitors comply with quarantine order](#)

**KITV4:** [New state figures show Hawaii hotel industry bleeding money](#)

**Big Island Video News:** [Young Brothers Seeks Financial Relief From Hawaii](#)

**Big Island Video News:** [End To Hawaii Inter-Island Quarantine Rule Expected Soon](#)

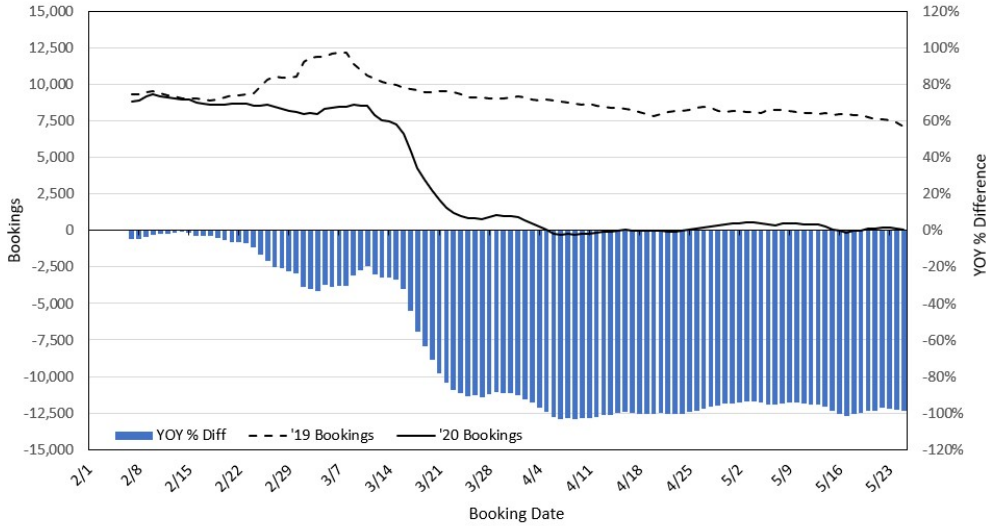
**Honolulu Star-Advertiser:** [Lee Cataluna: Focus on getting better rather than getting back](#)

**Hawaii Magazine:** [What's Canceled and Closed in Hawaii Right Now— May 26, 2020](#)

**Pacific Business News:** [Hawaii hotels report huge declines in occupancy, revenue amid Covid-19](#)

**Travel Pulse:** [Hawaii Hopeful to Reopen by July](#)

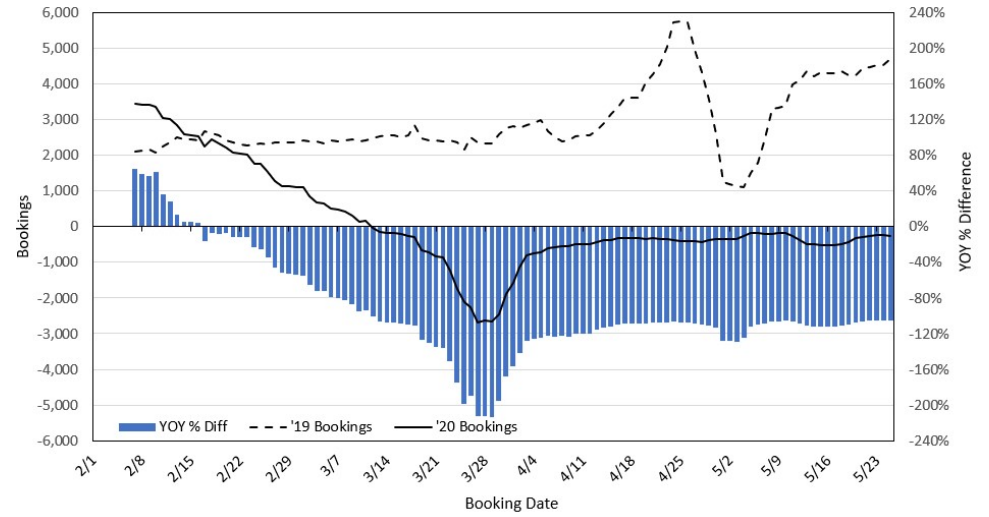
**Travel Agency Bookings to Hawaii for Future Arrivals\***  
**Based on a 7-day Moving Average, 2020 vs 2019**  
**U.S.**



\*Future Arrivals refers to all arrivals that are 'future' relative to the referenced booking date.  
 Source: Global Agency Pro

Update: May 25, 2020

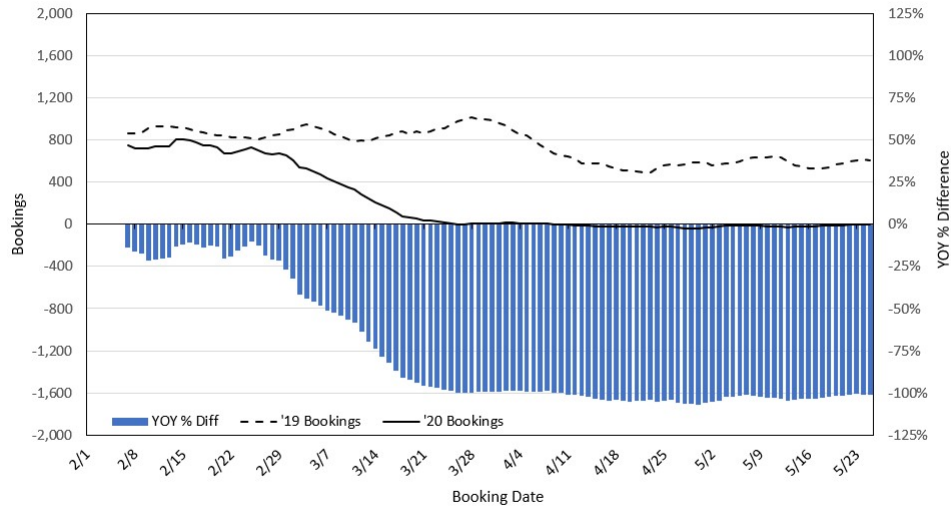
**Travel Agency Bookings to Hawaii for Future Arrivals\***  
**Based on a 7-day Moving Average, 2020 vs 2019**  
**Japan**



\*Future Arrivals refers to all arrivals that are 'future' relative to the referenced booking date.  
 Source: Global Agency Pro

Update: May 25, 2020

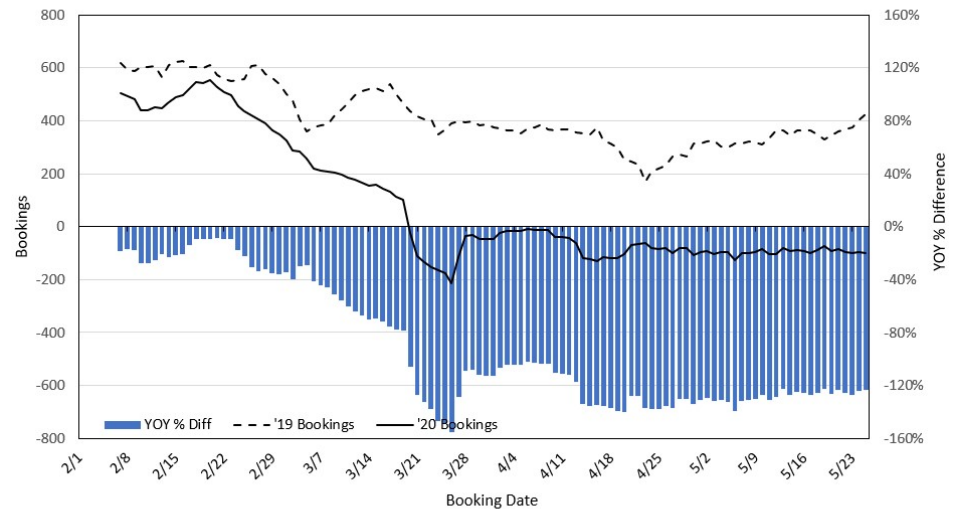
**Travel Agency Bookings to Hawaii for Future Arrivals\***  
**Based on a 7-day Moving Average, 2020 vs 2019**  
**Canada**



\*Future Arrivals refers to all arrivals that are 'future' relative to the referenced booking date.  
 Source: Global Agency Pro

Update: May 25, 2020

**Travel Agency Bookings to Hawaii for Future Arrivals\***  
**Based on a 7-day Moving Average, 2020 vs 2019**  
**Australia**



\*Future Arrivals refers to all arrivals that are 'future' relative to the referenced booking date.  
 Source: Global Agency Pro

Update: May 25, 2020