

HTA COVID-19 UPDATE

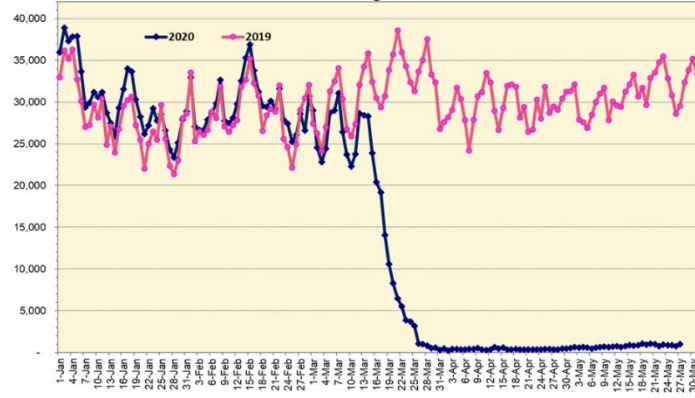
(Issued: 5/28/20 @ 4:30pm)

Novel Coronavirus in Hawaii

COVID-19 Positive* Cases

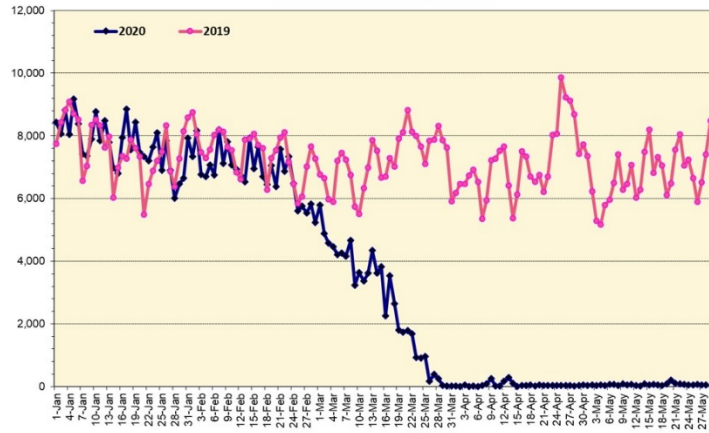
Cumulative totals as of 12:00 noon on May 28, 2020

Total Passenger Count



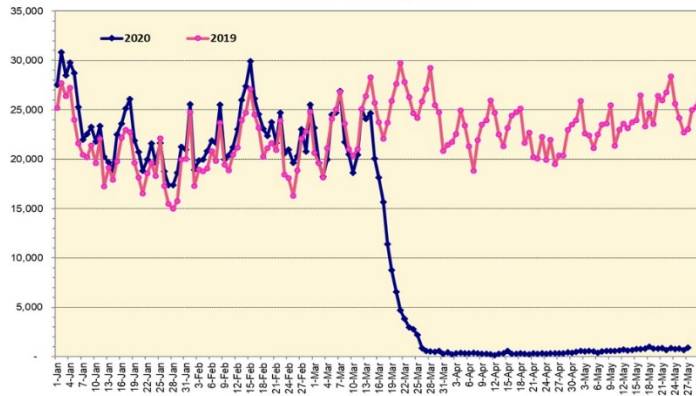
Note: Excludes flights from Canada

International Passenger Count



Note: Excludes flights from Canada

Domestic Passenger Count



Daily Passenger Count Table

05/27/2020	Domestic	International	Total
Oahu	849	51	900
Maui	53		53
Island of Hawaii	0		0
Kauai	38		38
State	940	51	991

05/28/20 Hawaii Passenger Arrivals by Air Update

Yesterday, 1129 people arrived in Hawaii. This table shows the number of people who arrived by air from out of state yesterday and does not include interisland travel. This data was collected from the Hawaii DOT new Mandatory Travel Declaration Form.

	Kona	Maui	Oahu	Lihue	Total
Crew		7	129	8	144
Exempt			44		44
Military			92		92
Relocate to Hawaii			65		65
Returning Resident		4	69	2	75
Transit		33	358	7	398
Visitor		16	272	23	311
Grand Total	0	60	1029	40	1129
Flights	0	1	12	2	15

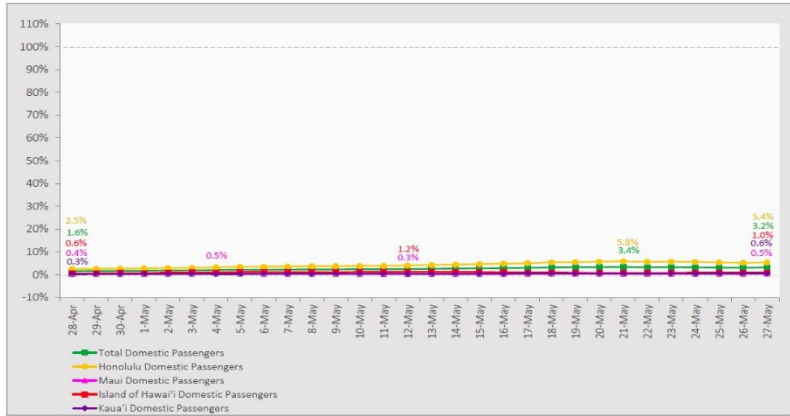
Statewide	Total
Total Cases	647 (3 new)
Released from Isolation†	604
Required Hospitalization	83
Deaths	17
BY COUNTY	Total
Hawaii County	
Total Cases	82
Released from Isolation†	81
Required Hospitalization	1
Deaths	0
Honolulu County	
Total Cases	417
Released from Isolation†	397
Required Hospitalization	58
Deaths	11
Kauai County	
Total Cases	20
Released from Isolation†	19
Required Hospitalization	1
Deaths	0
Maui County	
Total Cases	118
Released from Isolation†	106
Required Hospitalization	22
Deaths	6
HI Residents diagnosed outside of HI	10
County Pending	0

*includes presumptive and confirmed cases, data are preliminary and subject to change; note that CDC provides case counts according to states of residence.

†Isolation should be maintained until at least 3 days (72 hours) after resolution of fever and myalgia without the use of antipyretics OR at least 7 days have passed since symptom onset, whichever is longer.

7-Day Domestic by Island Moving Average Daily Passenger Volume

2020 Volume as Percentage of 2019 Volume
Through May 27, 2020



Source: HVCB analysis based on data from DBEDT
Note: Passenger volume figures include both visitors and residents.

Domestic by Island Month-to-Date and Year-to-Date Daily Passenger Volume

2020 Volume versus 2019 Volume
Through May 27, 2020

May 2020 (Month-to-Date through May 27)

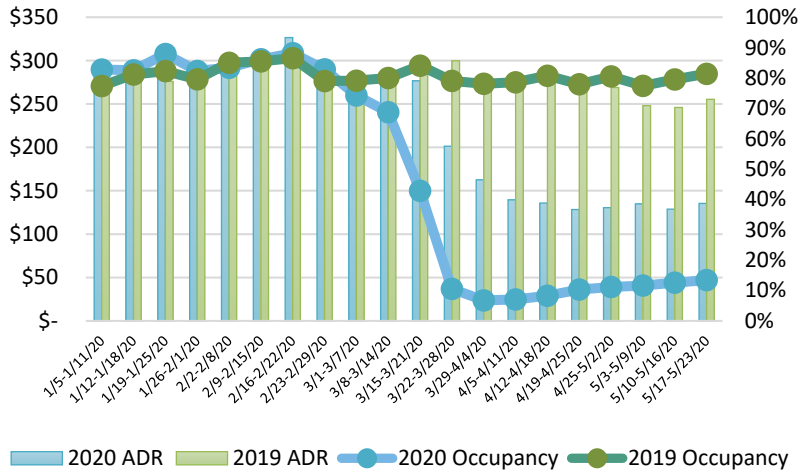
	2020	2019	Volume Change	Percent Change
Honolulu	16,999	352,553	-335,554	-95.2%
Maui County	726	168,482	-167,756	-99.6%
Island of Hawai'i	709	70,023	-69,314	-99.0%
Kaua'i	288	60,416	-60,128	-99.5%
Total	18,722	651,474	-632,752	-97.1%

2020 (Year-to-Date through May 27)

	2020	2019	Volume Change	Percent Change
Honolulu	989,230	1,783,815	-794,585	-44.5%
Maui County	442,306	835,183	-392,877	-47.0%
Island of Hawai'i	217,463	394,179	-176,716	-44.8%
Kaua'i	149,134	293,994	-144,860	-49.3%
Total	1,798,133	3,307,171	-1,509,038	-45.6%

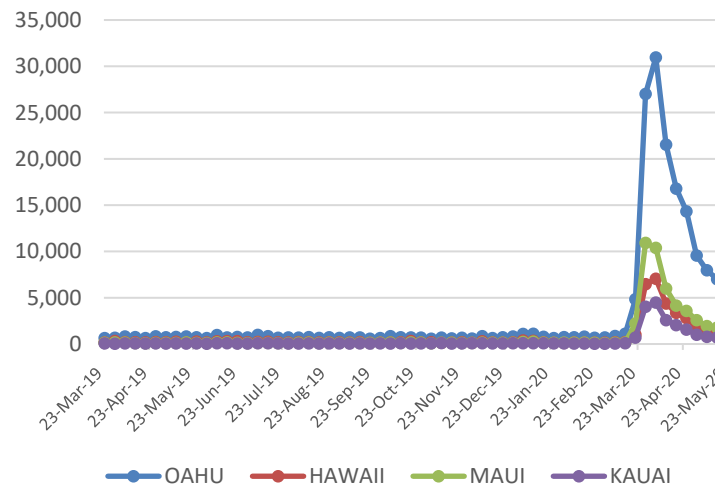
Source: HVCB analysis based on data from DBEDT
Note: Passenger volume figures include both visitors and residents. Total includes other international passengers. 2020 includes one additional day due to Leap Year (February 29th, 2020).

State of Hawai'i Hotel Performance by Week - 2020 vs 2019



Source: STR, Inc. © Copyright 2020 Hawai'i Tourism Authority

2020 Initial Weekly Unemployment Claims by Island



Hawaii Hotel Performance Info:

For the week of May 17 – May 23, 2020

	Occupancy	ADR	RevPAR
State of Hawaii	13.4%	\$ 135.39	\$ 18.18
Oahu	12.7%	\$ 143.62	\$ 18.20
Maui County	12.8%	\$ 143.81	\$ 18.44
Kauai County	12.3%	\$ 127.47	\$ 18.44
Island of Hawaii	17.9%	\$ 108.54	\$ 19.43

Weekly Unemployment Initial Claims: May 23, 2020

State of Hawaii	9,160
C&C of Oahu	5,851
Hawaii County	1,148
Maui County	1,349
Kauai County	611
Agent (filed in Hawaii against another state)	201

News Highlights

May 28, 2020

Honolulu Star-Advertiser: [Lt. Gov. Green says Hawaii slow to reopen parts of economy](#)

Hawaii News Now: [Salons, barber shops and other 'personal service providers' on Oahu get OK to reopen Friday](#)

Hawaii News Now: [Tourism Authority: With traveler quarantine in place, Hawaii saw 4,500 visitors in April](#)

Honolulu Civil Beat: [Report: Hawaii's Lack Of A Plan To Reopen Tourism Is 'Disturbing'](#)

Honolulu Star-Advertiser: [Hawaii hotel workers want protection before tourism resumes](#)

Honolulu Star-Advertiser: [Hawaii's vacation rental industry devastated by April lockdowns](#)

The Garden Island: [Kauai Beach Resort delivers drive-thru food](#)

Honolulu Civil Beat: [Hawaii Should Not Rush To Fully Reopen Tourism](#)

Hawaii Magazine: [The Honolulu Zoo Will Reopen on June 5 with Modified Rules and Hours](#)

FOX: [Coronavirus means Hawaii may not see cruise traffic until 2021](#)

Helpful Resources

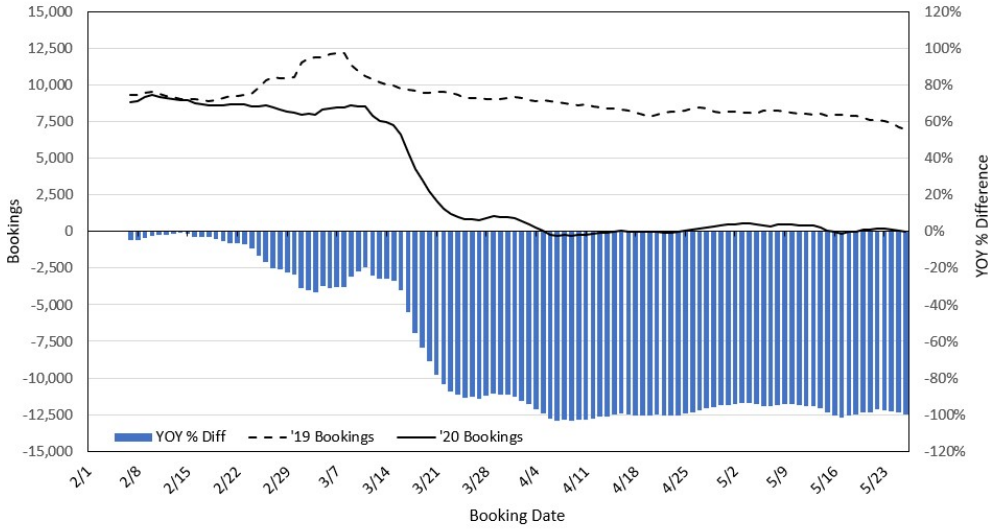
Department of Health
<https://hawaiiocovid19.com/>

Department of Health
<https://health.hawaii.gov/docd/advisories/novel-coronavirus-2019>

Dept. of Business, Economic Development & Tourism
<https://dbedt.hawaii.gov/economic/covid19/>

Department of Transportation
<https://hidot.hawaii.gov/coronavirus/>

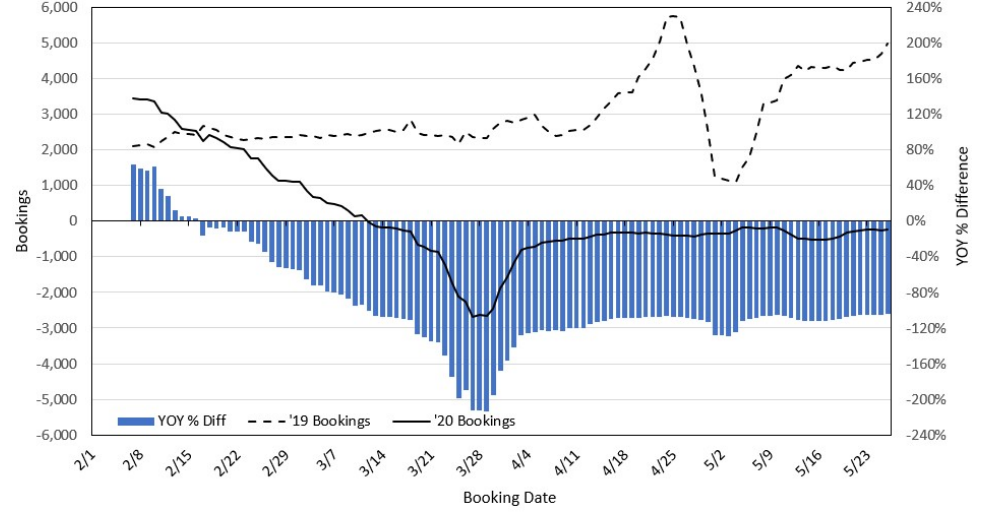
Travel Agency Bookings to Hawaii for Future Arrivals*
Based on a 7-day Moving Average, 2020 vs 2019
U.S.



*Future Arrivals refers to all arrivals that are 'future' relative to the referenced booking date.
 Source: Global Agency Pro

Update: May 26, 2020

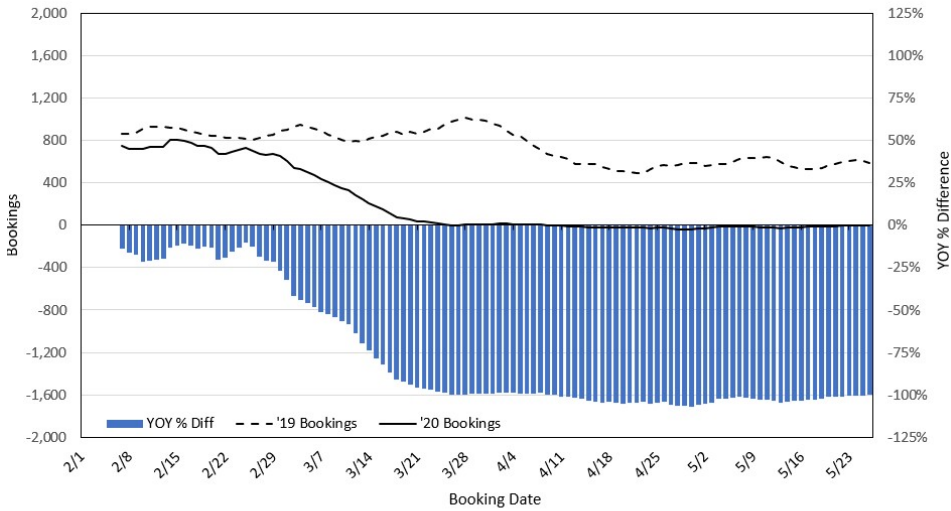
Travel Agency Bookings to Hawaii for Future Arrivals*
Based on a 7-day Moving Average, 2020 vs 2019
Japan



*Future Arrivals refers to all arrivals that are 'future' relative to the referenced booking date.
 Source: Global Agency Pro

Update: May 26, 2020

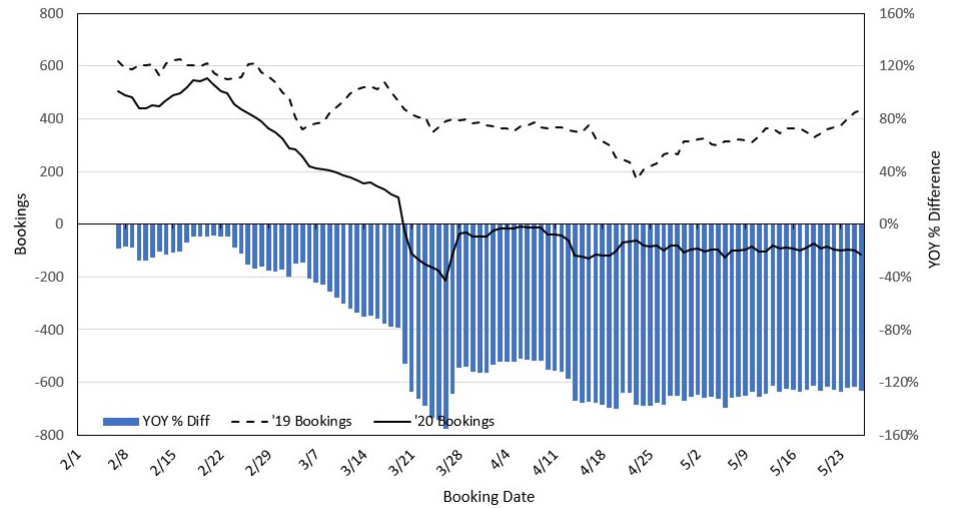
Travel Agency Bookings to Hawaii for Future Arrivals*
Based on a 7-day Moving Average, 2020 vs 2019
Canada



*Future Arrivals refers to all arrivals that are 'future' relative to the referenced booking date.
 Source: Global Agency Pro

Update: May 26, 2020

Travel Agency Bookings to Hawaii for Future Arrivals*
Based on a 7-day Moving Average, 2020 vs 2019
Australia



*Future Arrivals refers to all arrivals that are 'future' relative to the referenced booking date.
 Source: Global Agency Pro

Update: May 26, 2020