

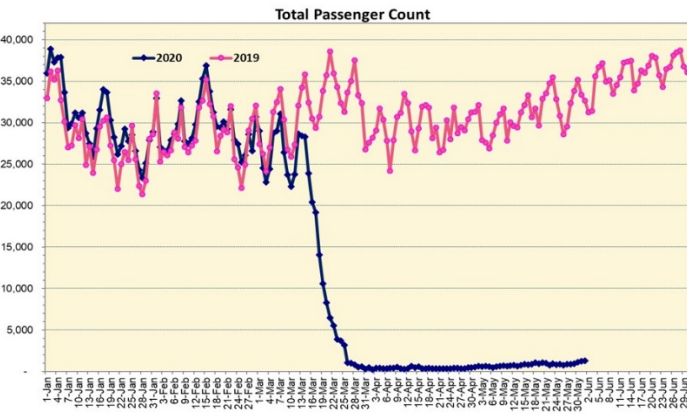
HTA COVID-19 UPDATE

(Issued: 6/2/20 @ 3:30pm)

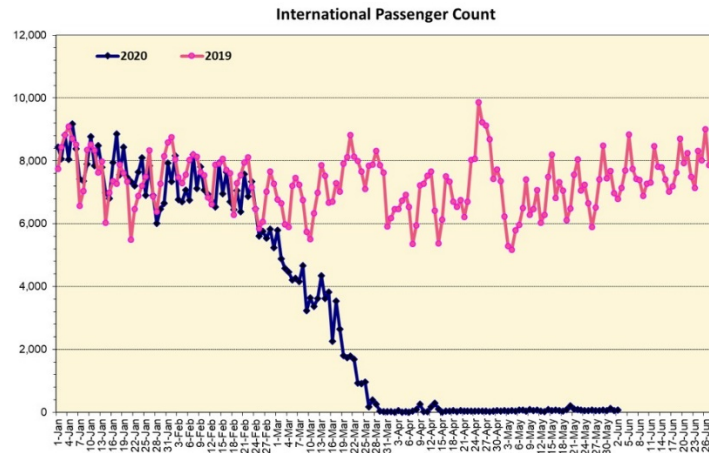
Novel Coronavirus in Hawaii

COVID-19 Positive* Cases

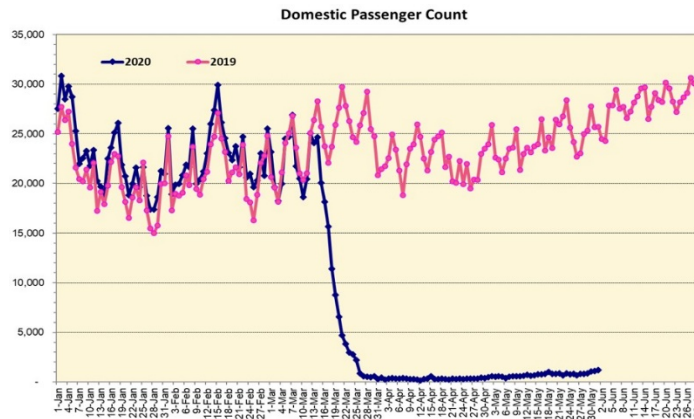
Cumulative totals as of 12:00 noon on June 2, 2020



Note: Excludes flights from Canada



Note: Excludes flights from Canada



Daily Passenger Count Table

06/01/2020	Domestic	International	Total
Oahu	1129	52	1181
Maui	88		88
Island of Hawaii	0		0
Kauai	0		0
State	1217	52	1269

6/2/20 Hawaii Passenger Arrivals by Air Update

Yesterday, 1538 people arrived in Hawaii. This table shows the number of people who arrived by air from out of state yesterday and does not include interisland travel. This data was collected from the Hawaii DOT new Mandatory Travel Declaration Form.

	Kona	Maui	Oahu	Lihue	Total
Crew	2	8	146		156
Exempt		3	78		81
Military			129		129
Relocate to Hawaii			89		89
Returning Resident	1	11	169		181
Transit	5	34	401		440
Visitor	18	41	403		462
Grand Total	26	97	1415	0	1538
Flights	4	2	14	0	20

Market Impact Update: <https://www.dropbox.com/06/02/20 HTA COVID19 Update>

Statewide	Total
Total Cases	653 (1 new)
Released from Isolation†	609
Required Hospitalization	83
Deaths	17
BY COUNTY	Total
Hawaii County	
Total Cases	81
Released from Isolation†	81
Required Hospitalization	1
Deaths	0
Honolulu County	
Total Cases	422
Released from Isolation†	398
Required Hospitalization	58
Deaths	11
Kauai County	
Total Cases	20
Released from Isolation†	19
Required Hospitalization	1
Deaths	0
Maui County	
Total Cases	120
Released from Isolation†	111
Required Hospitalization	22
Deaths	6
HI Residents diagnosed outside of HI	10
County Pending	0

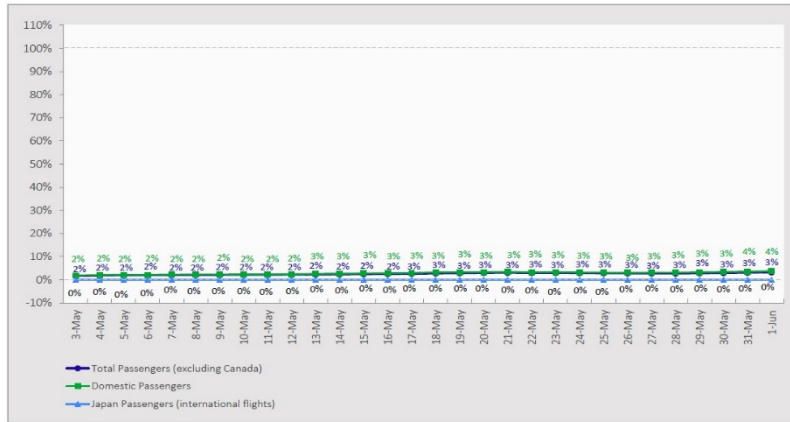
*includes presumptive and confirmed cases, data are preliminary and subject to change; note that CDC provides case counts according to states of residence.

†Isolation should be maintained until at least 3 days (72 hours) after resolution of fever and myalgia without the use of antipyretics OR at least 7 days have passed since symptom onset, whichever is longer.

7-Day Moving Average Daily Passenger Volume

2020 Volume as Percentage of 2019 Volume

Through June 1, 2020



Source: HVCB analysis based on data from DBEDT
Note: Passenger volume figures include both visitors and residents. Total includes other international passengers.

Month-to-Date and Year-to-Date Daily Passenger Volume

2020 Volume versus 2019 Volume

Through June 1, 2020

June 2020 (Month-to-Date through June 1)

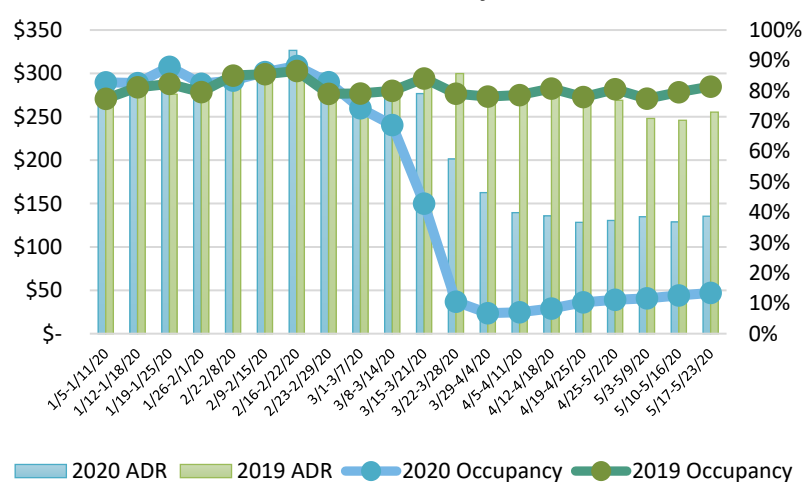
	2020	2019	Volume Change	Percent Change
Domestic	1,217	27,757	-26,540	-95.6%
Japan	0	4,593	-4,593	-100.0%
Total	1,269	35,193	-33,924	-96.4%

2020 (Year-to-Date through June 1)

	2020	2019	Volume Change	Percent Change
Domestic	1,801,857	3,403,185	-1,601,328	-47.1%
Japan	358,500	720,226	-361,726	-50.2%
Total	2,325,558	4,495,458	-2,169,900	-48.3%

Source: HVCB analysis based on data from DBEDT
Note: Passenger volume figures include both visitors and residents. Total includes other international passengers. 2020 includes one additional day due to Leap Year (February 29th, 2020).

State of Hawai'i Hotel Performance by Week - 2020 vs 2019



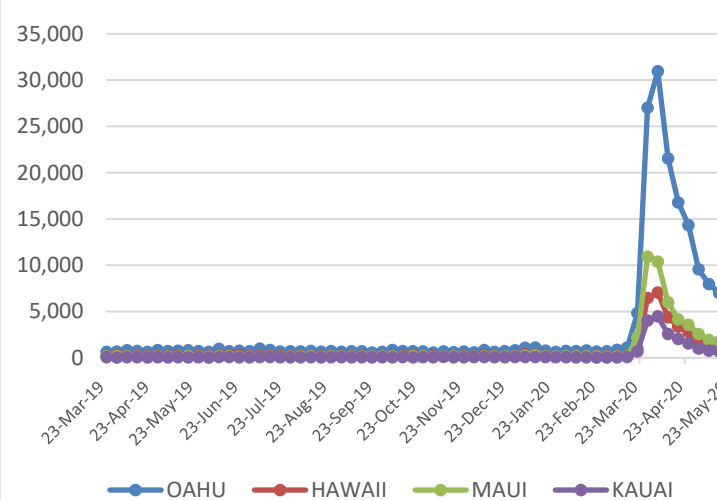
Source: STR, Inc. © Copyright 2020 Hawai'i Tourism Authority

Hawaii Hotel Performance Info:

For the week of May 17 – May 23, 2020

	Occupancy	ADR	RevPAR
State of Hawaii	13.4%	\$ 135.39	\$ 18.18
Oahu	12.7%	\$ 143.62	\$ 18.20
Maui County	12.8%	\$ 143.81	\$ 18.44
Kauai County	12.3%	\$ 127.47	\$ 18.44
Island of Hawaii	17.9%	\$ 108.54	\$ 19.43

2020 Initial Weekly Unemployment Claims by Island



Weekly Unemployment Initial Claims: May 23, 2020

State of Hawaii	9,160
C&C of Oahu	5,851
Hawaii County	1,148
Maui County	1,349
Kauai County	611
Agent (filed in Hawaii against another state)	201

News Highlights

June 2, 2020

KITV4: [New Hawaiian Airlines procedures because of COVID-19 hope to allow passengers to travel with confidence](#)

KHON2: [Consumer Alert: COVID-19 scams targeting college students, scammers posing as financial aid department](#)

Hawaii News Now: [With less equipment and no group classes, Neighbor Island gyms reopen](#)

Honolulu Civil Beat: [Hawaii Will End Interisland Travel Quarantine June 16](#)

Honolulu Civil Beat: [Denby Fawcett: Entering A World Of Uncertainty As Hawaii Reopens](#)

Pacific Business News: [Kauai resort, vacation rental company lay off more than 180 employees amid halt in tourism](#)

The Garden Island: [Hawaii short-term rentals remain on hold for virus recovery](#)

The Garden Island: [Restaurants reopen dine-in](#)

The Garden Island: [More quarantine-related arrests on Oahu](#)

Hawaii Public Radio: [The Conversation: Preparing For Tourism's Return](#)

Helpful Resources

Department of Health

<https://hawaiiocovid19.com/>

Department of Health

<https://health.hawaii.gov/dacd/advisories/novel-coronavirus-2019>

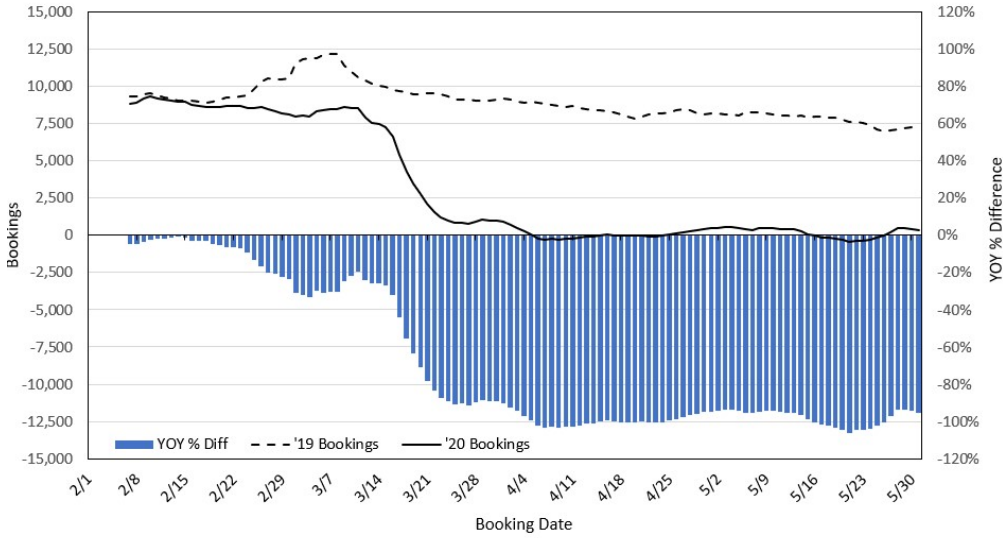
Dept. of Business, Economic Development & Tourism

<https://dbedt.hawaii.gov/economic/covid19/>

Department of Transportation

<https://hidot.hawaii.gov/coronavirus/>

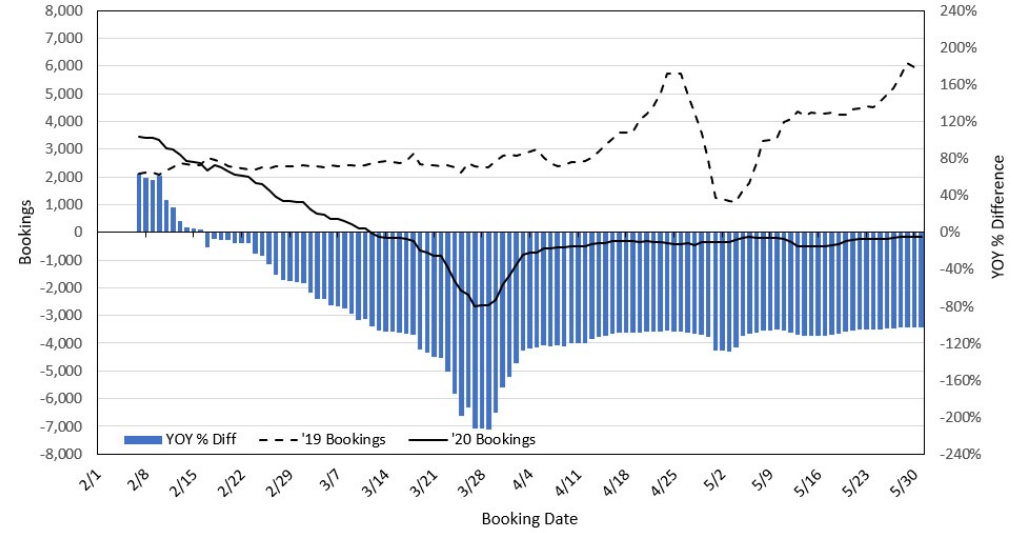
Travel Agency Bookings to Hawaii for Future Arrivals* Based on a 7-day Moving Average, 2020 vs 2019 U.S.



*Future Arrivals refers to all arrivals that are 'future' relative to the referenced booking date.
Source: Global Agency Pro

Update: May 31, 2020

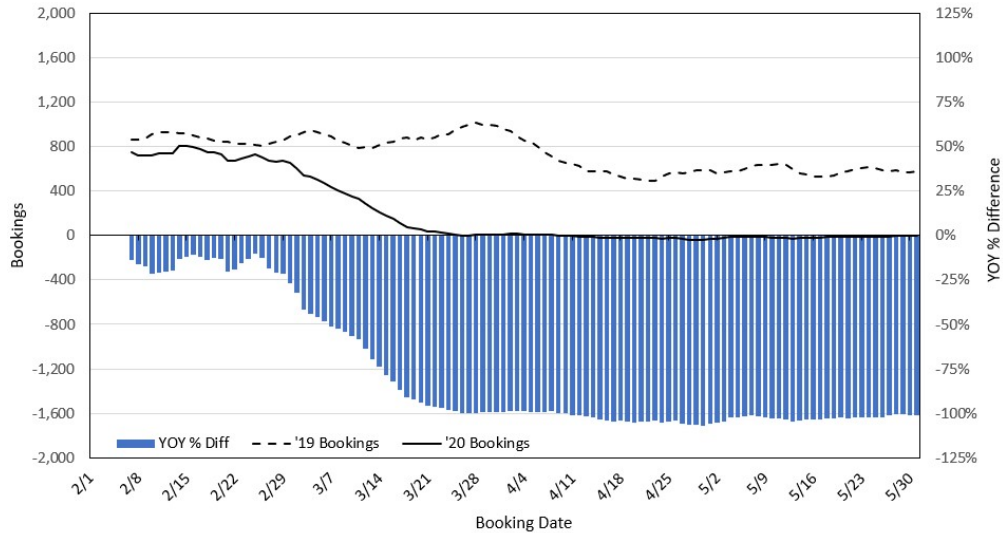
Travel Agency Bookings to Hawaii for Future Arrivals* Based on a 7-day Moving Average, 2020 vs 2019 Japan



*Future Arrivals refers to all arrivals that are 'future' relative to the referenced booking date.
Source: Global Agency Pro

Update: May 31, 2020

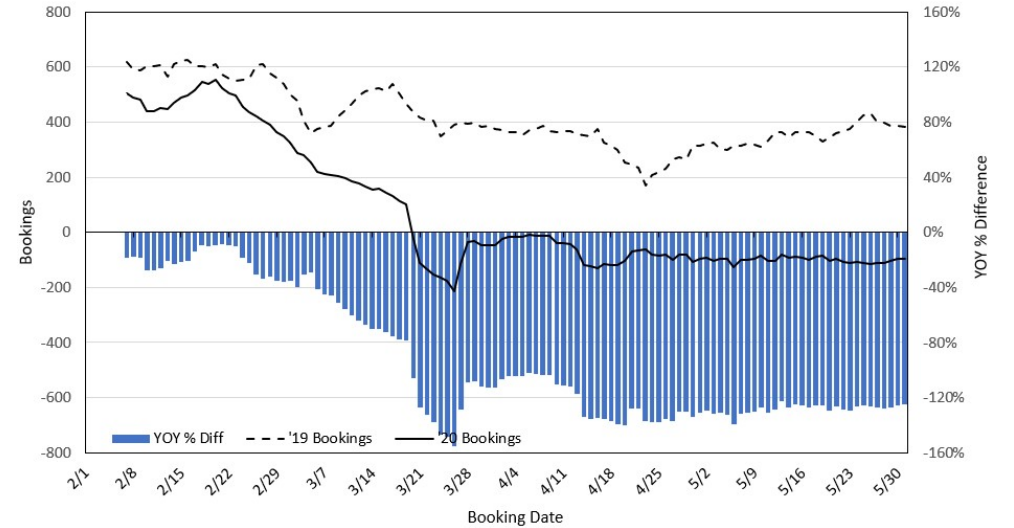
Travel Agency Bookings to Hawaii for Future Arrivals* Based on a 7-day Moving Average, 2020 vs 2019 Canada



*Future Arrivals refers to all arrivals that are 'future' relative to the referenced booking date.
Source: Global Agency Pro

Update: May 31, 2020

Travel Agency Bookings to Hawaii for Future Arrivals* Based on a 7-day Moving Average, 2020 vs 2019 Australia



*Future Arrivals refers to all arrivals that are 'future' relative to the referenced booking date.
Source: Global Agency Pro

Update: May 31, 2020