

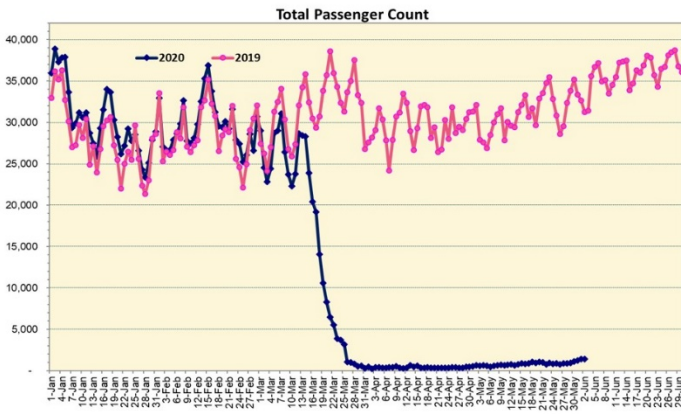
HTA COVID-19 UPDATE

(Issued: 6/3/20 @ 3:45pm)

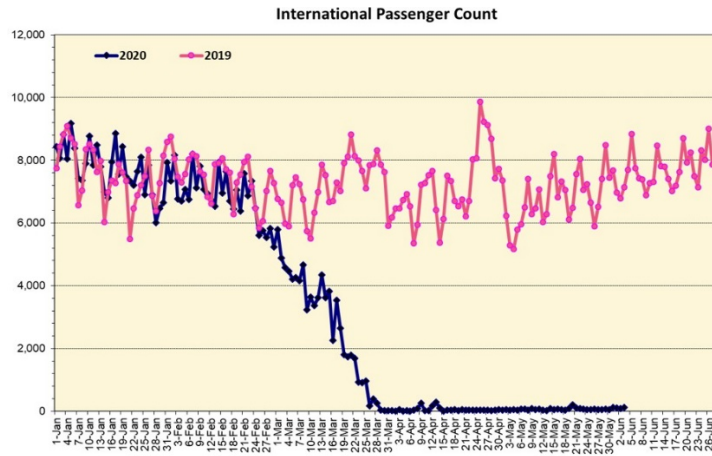
Novel Coronavirus in Hawaii

COVID-19 Positive* Cases

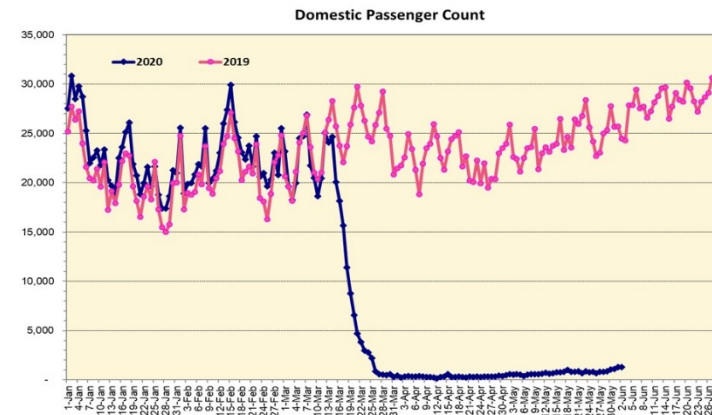
Cumulative totals as of 12:00 noon on June 3, 2020



Note: Excludes flights from Canada



Note: Excludes flights from Canada



Daily Passenger Count Table

| 06/02/2020 | Domestic | International | Total |
|------------------|----------|---------------|-------|
| Oahu | 1166 | 91 | 1257 |
| Maui | 83 | | 83 |
| Island of Hawaii | 47 | | 47 |
| Kauai | 0 | | 0 |
| State | 1296 | 91 | 1387 |

6/3/20 Hawaii Passenger Arrivals by Air Update

Yesterday, 1587 people arrived in Hawaii. This table shows the number of people who arrived by air from out of state yesterday and does not include interisland travel. This data was collected from the Hawaii DOT new Mandatory Travel Declaration Form.

| | Kona | Maui | Oahu | Lihue | Total |
|--------------------|-----------|-----------|-------------|----------|-------------|
| Crew | 7 | 9 | 131 | | 147 |
| Transit | | 3 | 123 | | 126 |
| Military | | | 203 | | 203 |
| Exempt | | | 53 | | 53 |
| Relocate to Hawaii | 5 | 12 | 142 | | 159 |
| Returning Resident | 25 | 32 | 423 | | 480 |
| Visitor | 23 | 39 | 357 | | 419 |
| Grand Total | 60 | 95 | 1432 | 0 | 1587 |
| Flights | 2 | 2 | 15 | 0 | 19 |

Market Impact Update: <https://www.dropbox.com/06/03/20 HTA COVID19 Update>

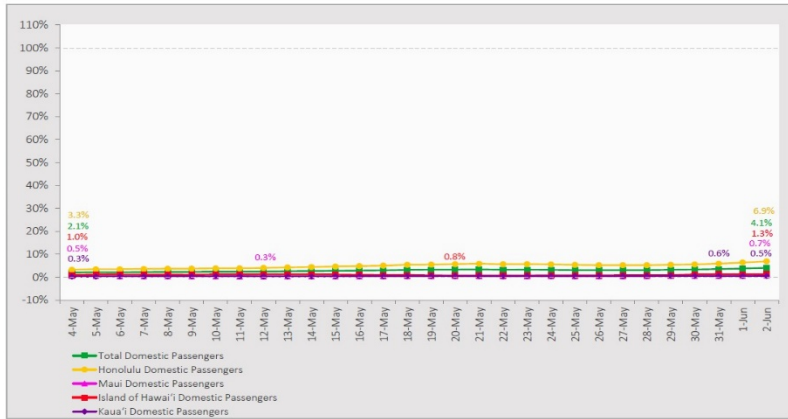
| Statewide | Total |
|--------------------------------------|--------------------|
| Total Cases | 653 (1 new) |
| Released from Isolation† | 612 |
| Required Hospitalization | 83 |
| Deaths | 17 |
| BY COUNTY | Total |
| Hawaii County | |
| Total Cases | 81 |
| Released from Isolation† | 81 |
| Required Hospitalization | 1 |
| Deaths | 0 |
| Honolulu County | |
| Total Cases | 423 |
| Released from Isolation† | 401 |
| Required Hospitalization | 58 |
| Deaths | 11 |
| Kauai County | |
| Total Cases | 20 |
| Released from Isolation† | 19 |
| Required Hospitalization | 1 |
| Deaths | 0 |
| Maui County | |
| Total Cases | 119 |
| Released from Isolation† | 111 |
| Required Hospitalization | 22 |
| Deaths | 6 |
| HI Residents diagnosed outside of HI | 10 |
| County Pending | 0 |

*includes presumptive and confirmed cases, data are preliminary and subject to change; note that CDC provides case counts according to states of residence.

†Isolation should be maintained until at least 3 days (72 hours) after resolution of fever and myalgia without the use of antipyretics OR at least 7 days have passed since symptom onset, whichever is longer.

7-Day Domestic by Island Moving Average Daily Passenger Volume

2020 Volume as Percentage of 2019 Volume
Through June 2, 2020



Source: HVCB analysis based on data from DBEDT
Note: Passenger volume figures include both visitors and residents.

Domestic by Island Month-to-Date and Year-to-Date Daily Passenger Volume

2020 Volume versus 2019 Volume
Through June 2, 2020

June 2020 (Month-to-Date through June 2)

| | 2020 | 2019 | Volume Change | Percent Change |
|-------------------|--------------|---------------|----------------|----------------|
| Honolulu | 2,387 | 28,197 | -25,810 | -91.5% |
| Maui County | 170 | 13,839 | -13,669 | -98.8% |
| Island of Hawai'i | 47 | 6,080 | -6,033 | -99.2% |
| Kaua'i | 0 | 5,299 | -5,299 | -100.0% |
| Total | 2,604 | 53,415 | -50,811 | -95.1% |

2020 (Year-to-Date through June 2)

| | 2020 | 2019 | Volume Change | Percent Change |
|-------------------|------------------|------------------|-------------------|----------------|
| Honolulu | 994,976 | 1,865,118 | -870,142 | -46.7% |
| Maui County | 442,572 | 873,537 | -430,965 | -49.3% |
| Island of Hawai'i | 217,713 | 410,994 | -193,281 | -47.0% |
| Kaua'i | 149,183 | 306,951 | -157,768 | -51.4% |
| Total | 1,804,444 | 3,456,600 | -1,652,156 | -47.8% |

Source: HVCB analysis based on data from DBEDT
Note: Passenger volume figures include both visitors and residents. Total includes other international passengers. 2020 includes one additional day due to Leap Year (February 29th, 2020).

News Highlights

June 3, 2020

Hawaii News Now: [For first time in months, dining-in will be an option at Oahu restaurants Friday](#)

KITV4: [Travel impact of inter-island quarantine ending](#)

Honolulu Star-Advertiser: [Arriving visitors on Monday hit highest mark since tourism lockdowns began](#)

Hawaii News Now: [With tourism still shut down, head of Hawaii Tourism Authority announces retirement](#)

The Garden Island: [Virus impacts wedding industry](#)

West Hawaii Today: [My Turn: Responsible reopening starts here](#)

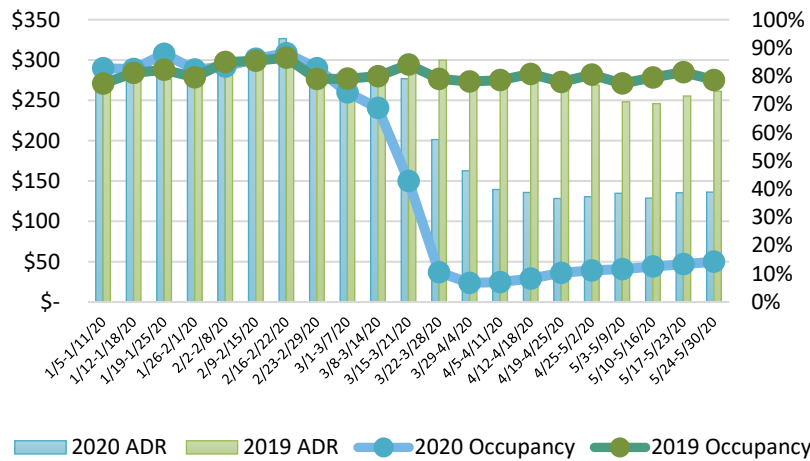
Hawaii Public Radio: [The Conversation: Marketing Hawaii Tourism](#)

Honolulu Civil Beat: [Report On Bullying By State Senator Surfaces As Tension Mounts Over Hawaii Recovery Plan](#)

KITV: [Reports of 'service charge' at newly opened Hawaii restaurants](#)

KITV: [18-year-old California woman arrested after documenting quarantine violations on social media](#)

State of Hawai'i Hotel Performance by Week - 2020 vs 2019



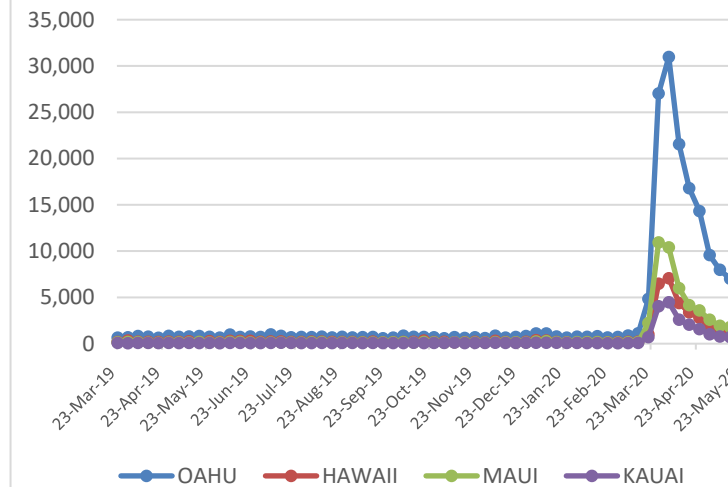
Source: STR, Inc. © Copyright 2020 Hawai'i Tourism Authority

Hawaii Hotel Performance Info:

For the week of May 24 – May 30, 2020

| | Occupancy | ADR | RevPAR |
|-------------------------|-----------|-----------|----------|
| State of Hawaii | 14.3% | \$ 136.26 | \$ 19.43 |
| Oahu | 12.5% | \$ 143.42 | \$ 17.97 |
| Maui County | 12.4% | \$ 152.42 | \$ 18.84 |
| Kauai County | 20.8% | \$ 126.31 | \$ 26.29 |
| Island of Hawaii | 19.3% | \$ 109.99 | \$ 21.18 |

2020 Initial Weekly Unemployment Claims by Island



Weekly Unemployment Initial Claims: May 23, 2020

| | |
|--|-------|
| State of Hawaii | 9,160 |
| C&C of Oahu | 5,851 |
| Hawaii County | 1,148 |
| Maui County | 1,349 |
| Kauai County | 611 |
| Agent (filed in Hawaii against another state) | 201 |

Helpful Resources

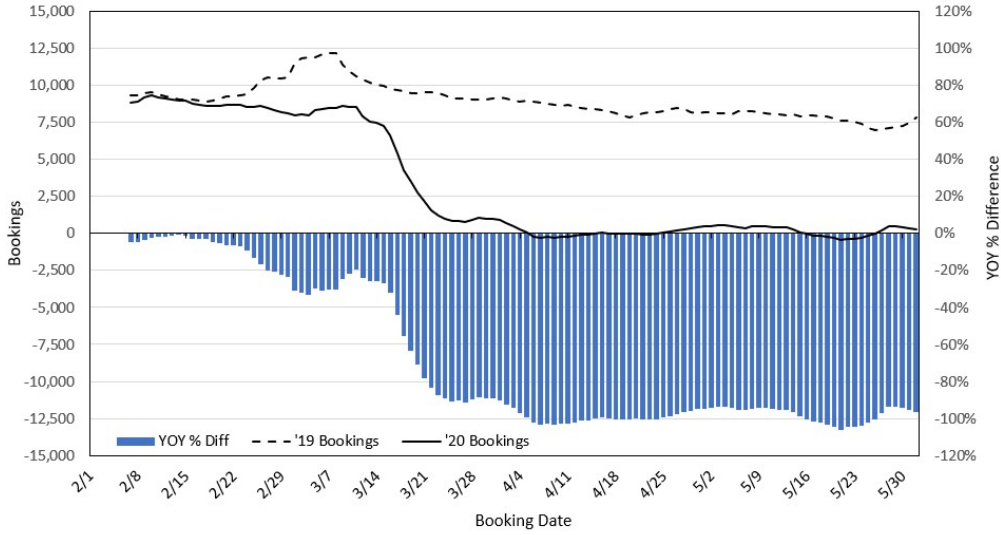
Department of Health
<https://hawaiiocovid19.com/>

Department of Health
<https://health.hawaii.gov/dacd/advisories/novel-coronavirus-2019>

Dept. of Business, Economic Development & Tourism
<https://dbedt.hawaii.gov/economic/covid19/>

Department of Transportation
<https://hidot.hawaii.gov/coronavirus/>

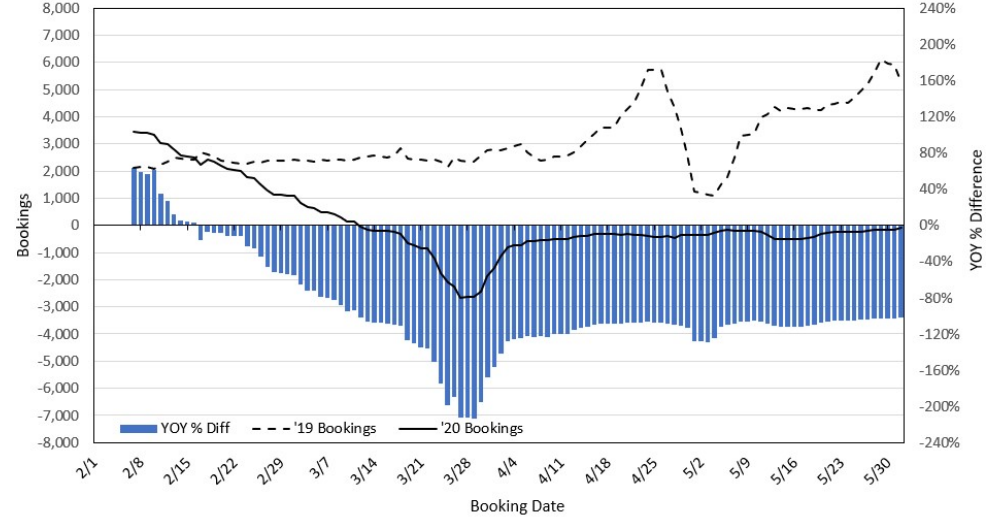
Travel Agency Bookings to Hawaii for Future Arrivals* Based on a 7-day Moving Average, 2020 vs 2019 U.S.



*Future Arrivals refers to all arrivals that are 'future' relative to the referenced booking date.
Source: Global Agency Pro

Update: Jun 1, 2020

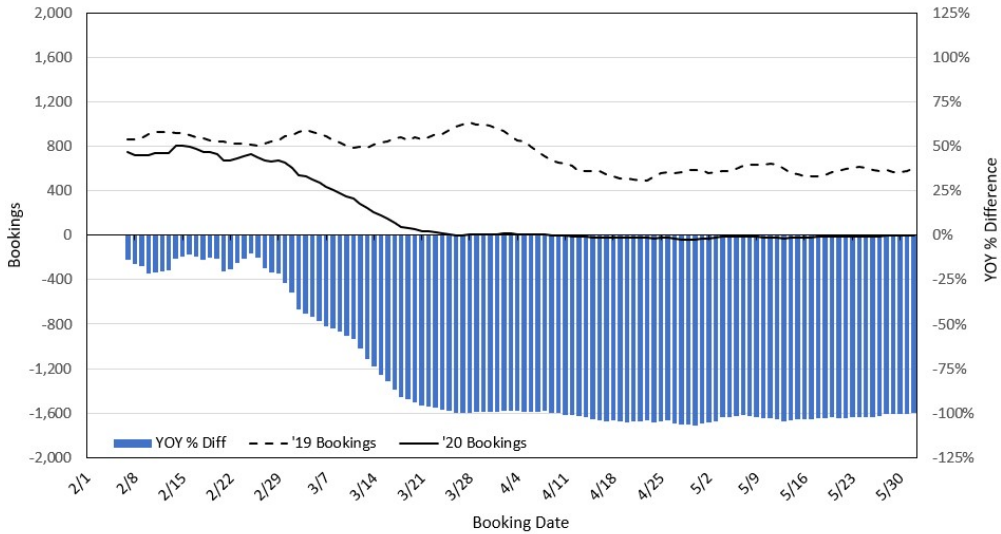
Travel Agency Bookings to Hawaii for Future Arrivals* Based on a 7-day Moving Average, 2020 vs 2019 Japan



*Future Arrivals refers to all arrivals that are 'future' relative to the referenced booking date.
Source: Global Agency Pro

Update: Jun 1, 2020

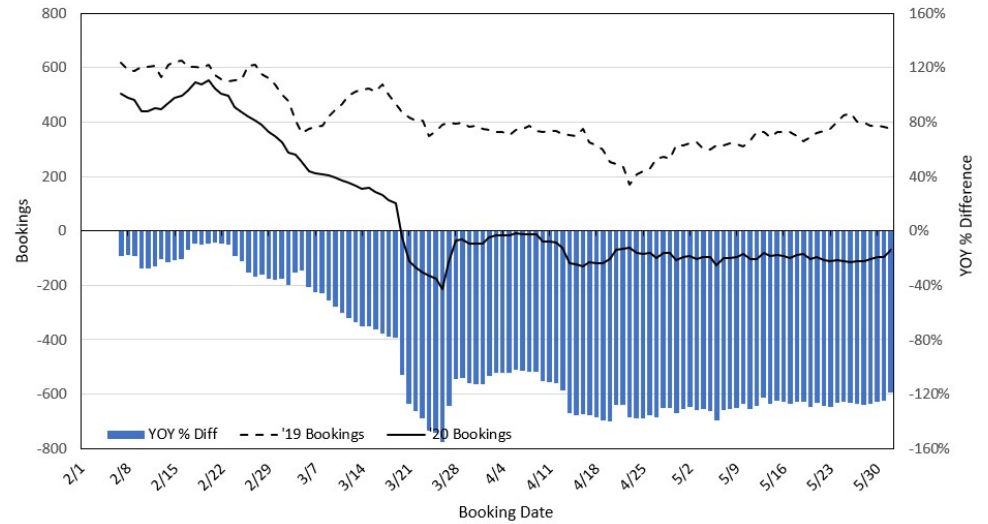
Travel Agency Bookings to Hawaii for Future Arrivals* Based on a 7-day Moving Average, 2020 vs 2019 Canada



*Future Arrivals refers to all arrivals that are 'future' relative to the referenced booking date.
Source: Global Agency Pro

Update: Jun 1, 2020

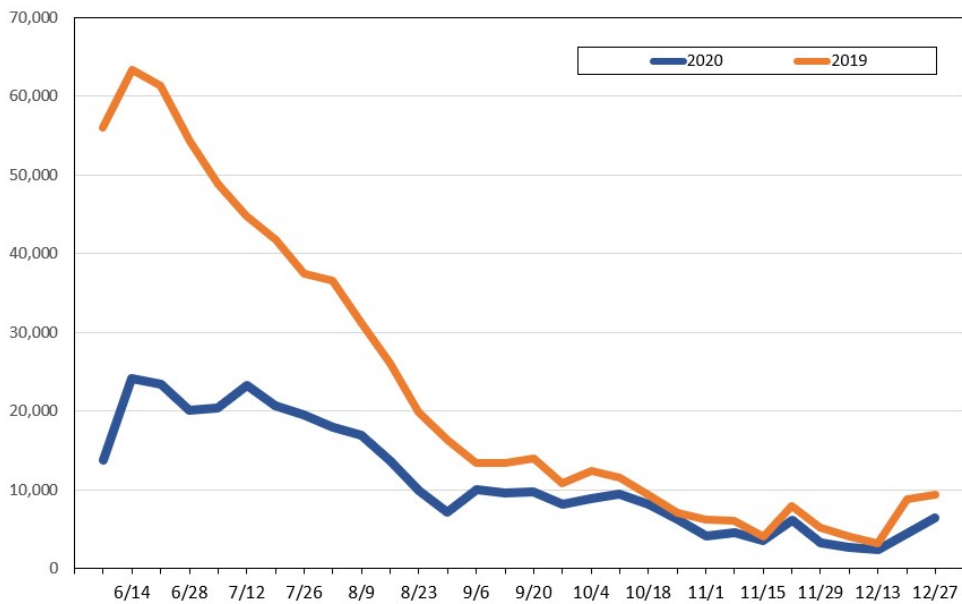
Travel Agency Bookings to Hawaii for Future Arrivals* Based on a 7-day Moving Average, 2020 vs 2019 Australia



*Future Arrivals refers to all arrivals that are 'future' relative to the referenced booking date.
Source: Global Agency Pro

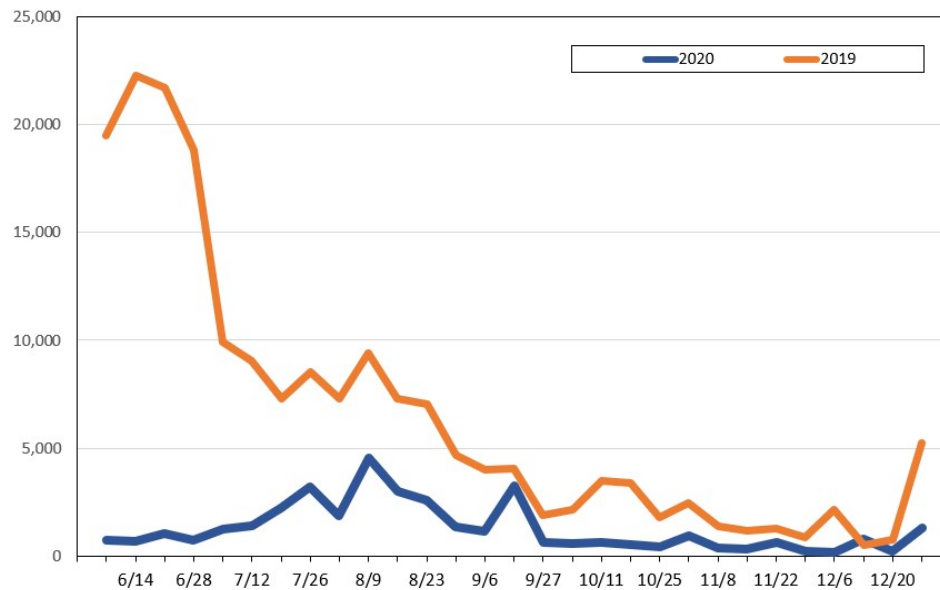
Update: Jun 1, 2020

Travel Agency Bookings for Future Travel to Hawai'i As of June 3, 2020
U.S.



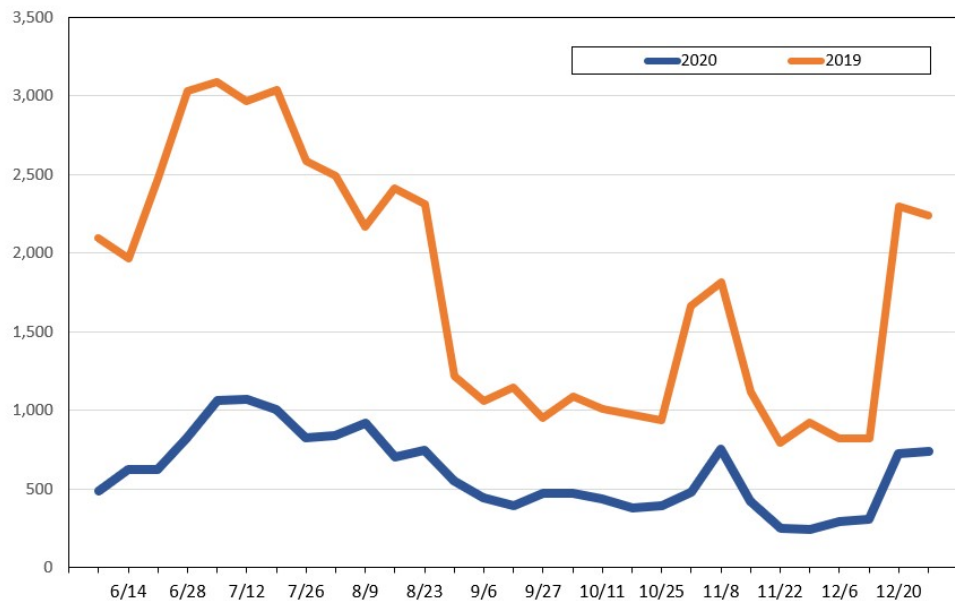
Source: Global Agency Pro, as of June 3, 2020

Travel Agency Bookings for Future Travel to Hawai'i As of June 3, 2020
Japan



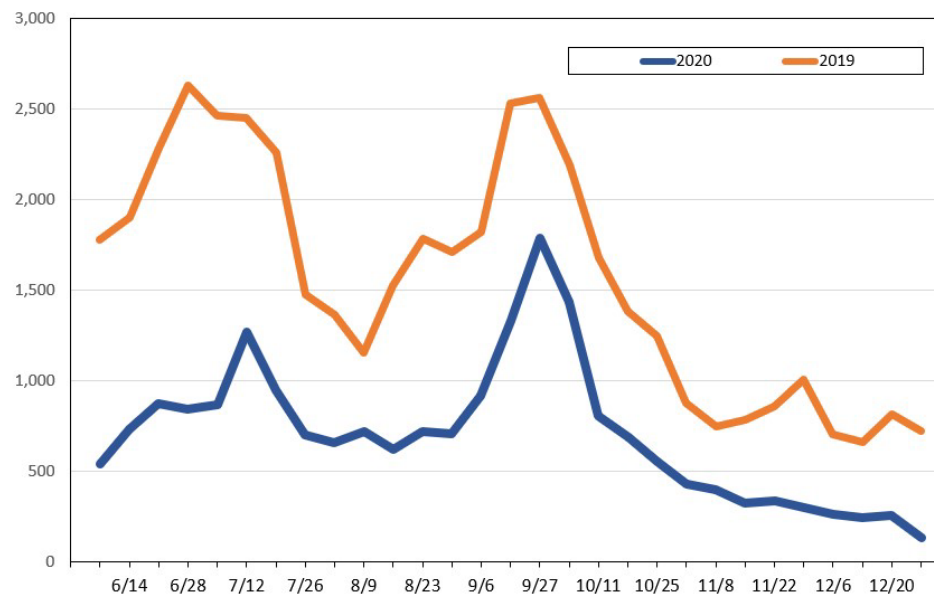
Source: Global Agency Pro, as of June 3, 2020

Travel Agency Bookings for Future Travel to Hawai'i As of June 3, 2020
Canada



Source: Global Agency Pro, as of June 3, 2020

Travel Agency Bookings for Future Travel to Hawai'i As of June 3, 2020
Australia



Source: Global Agency Pro, as of June 3, 2020