

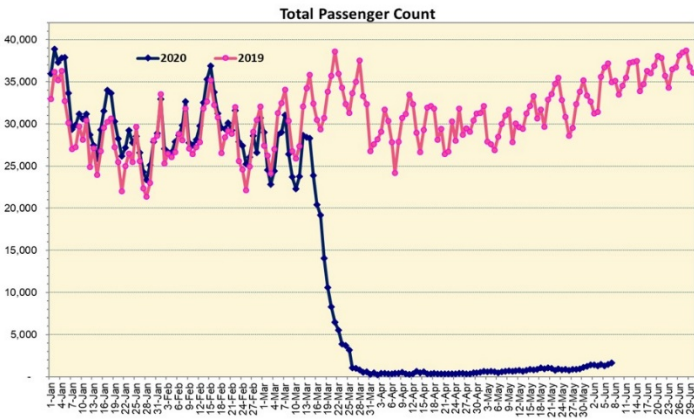
HTA COVID-19 UPDATE

(Issued: 6/8/20 @ 3:30pm)

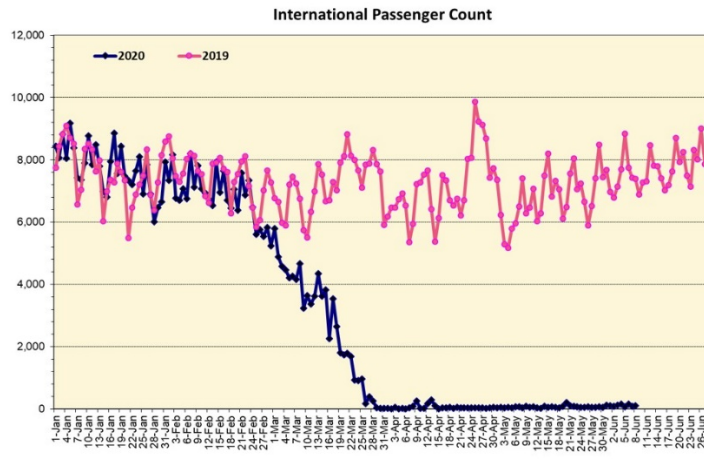
Novel Coronavirus in Hawaii

COVID-19 Positive* Cases

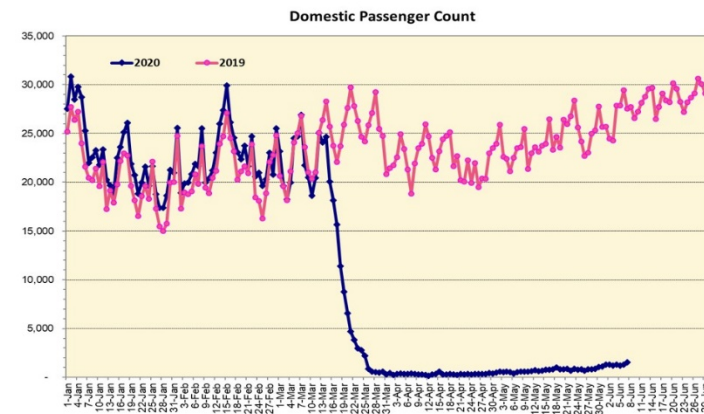
Cumulative totals as of 12:00 noon on June 8, 2020



Note: Excludes flights from Canada



Note: Excludes flights from Canada



Daily Passenger Count Table

06/07/2020	Domestic	International	Total
Oahu	1358	93	1451
Maui	86		86
Island of Hawaii	88		88
Kauai	0		0
State	1532	93	1625

6/8/20 Hawaii Passenger Arrivals by Air Update

Yesterday, 1891 people arrived in Hawaii. This table shows the number of people who arrived by air from out of state yesterday and does not include interisland travel. This data was collected from the Hawaii DOT new Mandatory Travel Declaration Form.

	Kona	Maui	Oahu	Lihue	Total
Crew	10	12	156		178
Transit			108		108
Military			158		158
Exempt			123		123
Relocate to Hawaii	15	2	77		94
Returning Resident	28	45	490		563
Visitor	62	39	566		667
Grand Total	115	98	1678	0	1891
Flights	3	2	15	0	20

Statewide	Total
Total Cases	676 (1 new)
Released from Isolation†	618
Required Hospitalization	84
Deaths	17
BY COUNTY	Total
Hawaii County	
Total Cases	81
Released from Isolation†	81
Required Hospitalization	1
Deaths	0
Honolulu County	
Total Cases	442
Released from Isolation†	404
Required Hospitalization	59
Deaths	11
Kauai County	
Total Cases	21
Released from Isolation†	20
Required Hospitalization	1
Deaths	0
Maui County	
Total Cases	120
Released from Isolation†	113
Required Hospitalization	22
Deaths	6
HI Residents diagnosed outside of HI	12
County Pending	0

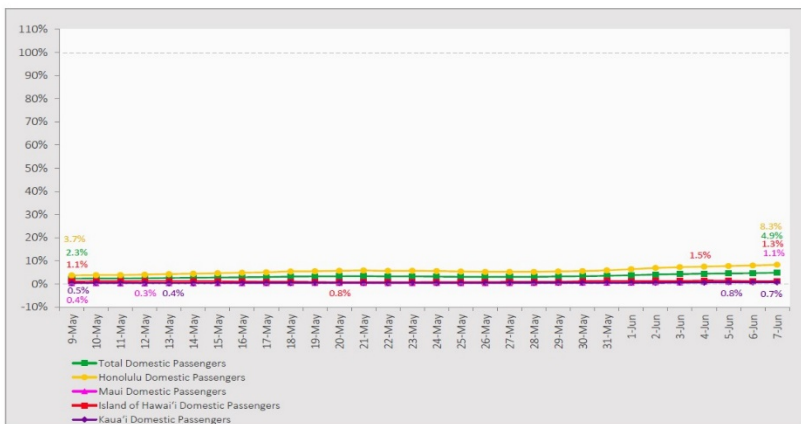
*includes presumptive and confirmed cases, data are preliminary and subject to change; note that CDC provides case counts according to states of residence.

†Isolation should be maintained until at least 3 days (72 hours) after resolution of fever and myalgia without the use of antipyretics OR at least 7 days have passed since symptom onset, whichever is longer.

Market Impact Update: <https://www.dropbox.com/06/08/20 HTA COVID19 Update>

7-Day Domestic by Island Moving Average Daily Passenger Volume

2020 Volume as Percentage of 2019 Volume
Through June 7, 2020



Source: HVCB analysis based on data from DBEDT
Note: Passenger volume figures include both visitors and residents.

Domestic by Island Month-to-Date and Year-to-Date Daily Passenger Volume

2020 Volume versus 2019 Volume
Through June 7, 2020

June 2020 (Month-to-Date through June 7)

	2020	2019	Volume Change	Percent Change
Honolulu	8,157	97,012	-88,855	-91.6%
Maui County	557	48,721	-48,164	-98.9%
Island of Hawai'i	283	21,398	-21,115	-98.7%
Kaua'i	116	16,449	-16,333	-99.3%
Total	9,113	183,580	-174,467	-95.0%

2020 (Year-to-Date through June 7)

	2020	2019	Volume Change	Percent Change
Honolulu	1,000,746	1,933,933	-933,187	-48.3%
Maui County	442,959	908,419	-465,460	-51.2%
Island of Hawai'i	217,949	426,312	-208,363	-48.9%
Kaua'i	149,299	318,101	-168,802	-53.1%
Total	1,810,953	3,586,765	-1,775,812	-49.5%

Source: HVCB analysis based on data from DBEDT
Note: Passenger volume figures include both visitors and residents. Total includes other international passengers. 2020 includes one additional day due to Leap Year (February 29th, 2020).

News Highlights

June 8, 2020

Honolulu Star-Advertiser: [Lifting of interisland quarantine will move Hawaii tourism needle slightly](#)

Honolulu Star-Advertiser: [Tourism-dependent Maui grapples with highest jobless rate in the state](#)

Honolulu Star-Advertiser: [2 new Oahu coronavirus cases, 509 out-of-state new visitor arrivals to Hawaii](#)

Honolulu Star-Advertiser: [Editorial: Spats aside, Hawaii needs to focus on the economic challenge](#)

Hawaii Tribune-Herald: [Lifting of interisland quarantine brings optimism for businesses](#)

The Garden Island: [Restarting Kauai](#)

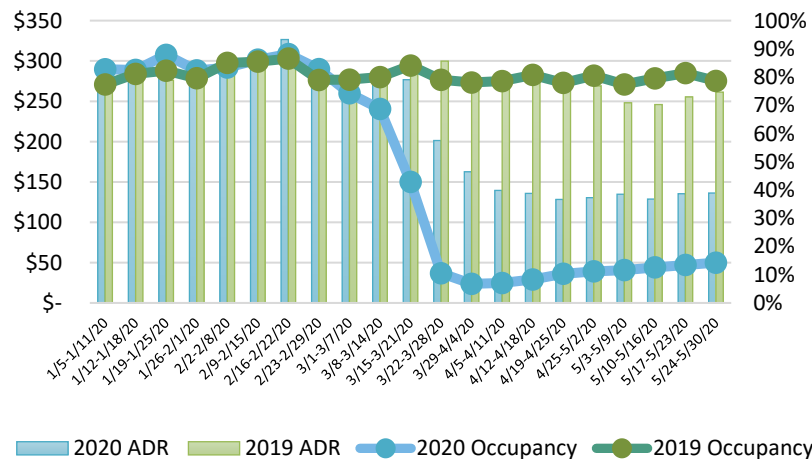
The Maui News: [Dependence on tourism, real estate short-sighted](#)

Honolulu Civil Beat: [Hawaii's Wedding Business Has Been 'Completely Demolished'](#)

Hawaii Public Radio: [Where's the Communication Plan for Hawaii's Re-Opening?](#)

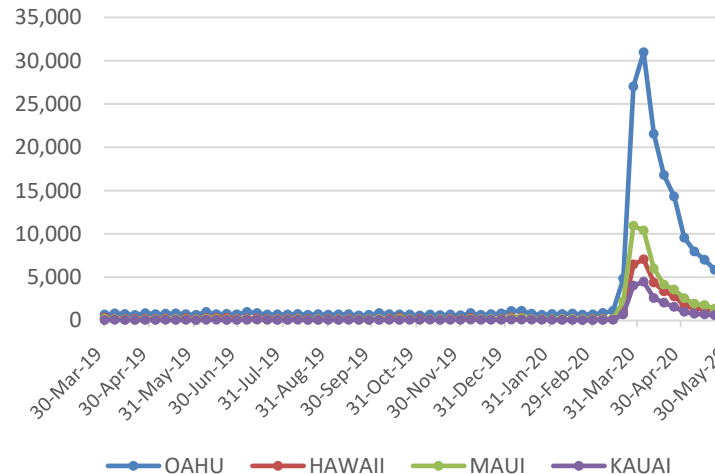
Travel Weekly: [Under fractured leadership, state charts course to recovery](#)

State of Hawai'i Hotel Performance by Week - 2020 vs 2019



Source: STR, Inc. © Copyright 2020 Hawai'i Tourism Authority

2020 Initial Weekly Unemployment Claims by Island



Hawaii Hotel Performance Info:

For the week of May 24 – May 30, 2020

	Occupancy	ADR	RevPAR
State of Hawaii	14.3%	\$ 136.26	\$ 19.43
Oahu	12.5%	\$ 143.42	\$ 17.97
Maui County	12.4%	\$ 152.42	\$ 18.84
Kauai County	20.8%	\$ 126.31	\$ 26.29
Island of Hawaii	19.3%	\$ 109.99	\$ 21.18

Weekly Unemployment Initial Claims: May 30, 2020

State of Hawaii	7,736
C&C of Oahu	4,830
Hawaii County	1,044
Maui County	1,153
Kauai County	550
Agent (filed in Hawaii against another state)	159

Helpful Resources

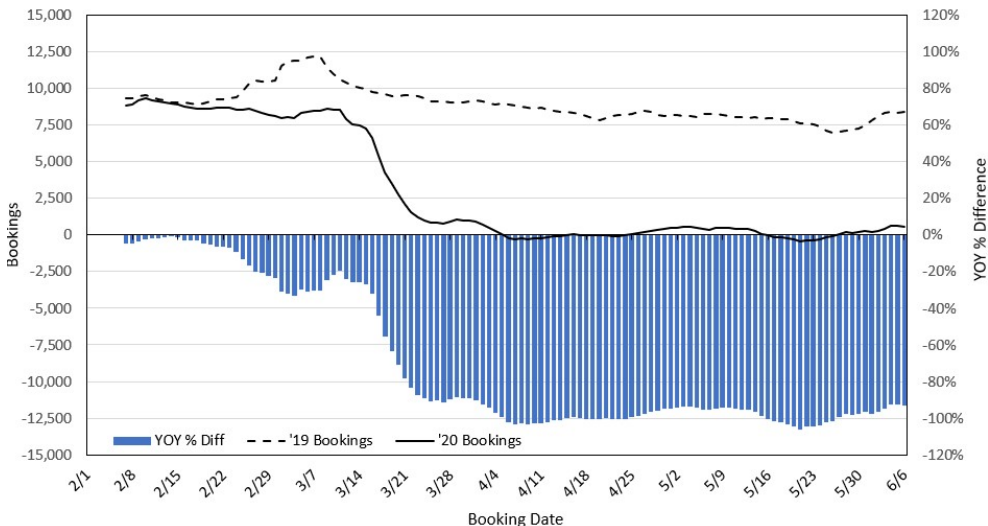
Department of Health
<https://hawaiicovid19.com/>

Department of Health
<https://health.hawaii.gov/dacd/advisories/novel-coronavirus-2019>

Dept. of Business, Economic Development & Tourism
<https://dbedt.hawaii.gov/economic/covid19/>

Department of Transportation
<https://hidot.hawaii.gov/coronavirus/>

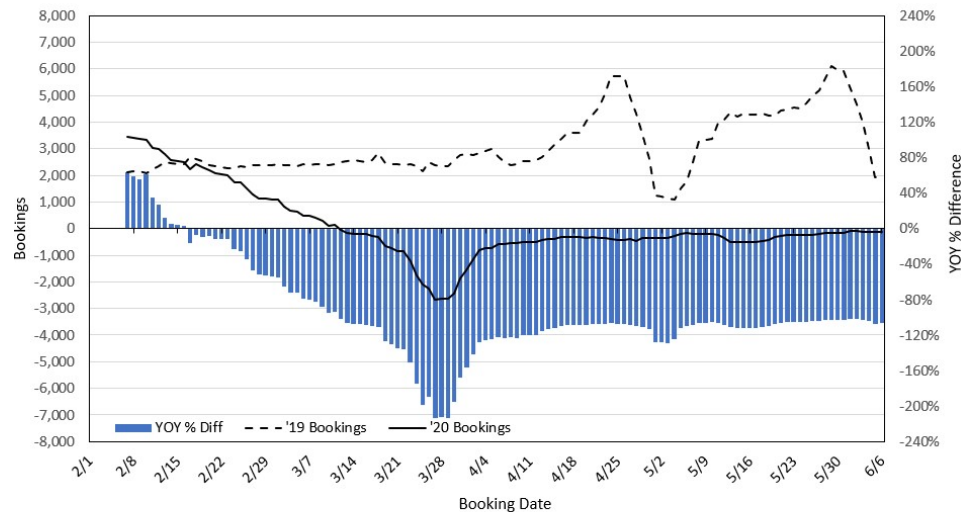
Travel Agency Bookings to Hawaii for Future Arrivals*
Based on a 7-day Moving Average, 2020 vs 2019
U.S.



*Future Arrivals refers to all arrivals that are 'future' relative to the referenced booking date.
 Source: Global Agency Pro

Update: Jun 6, 2020

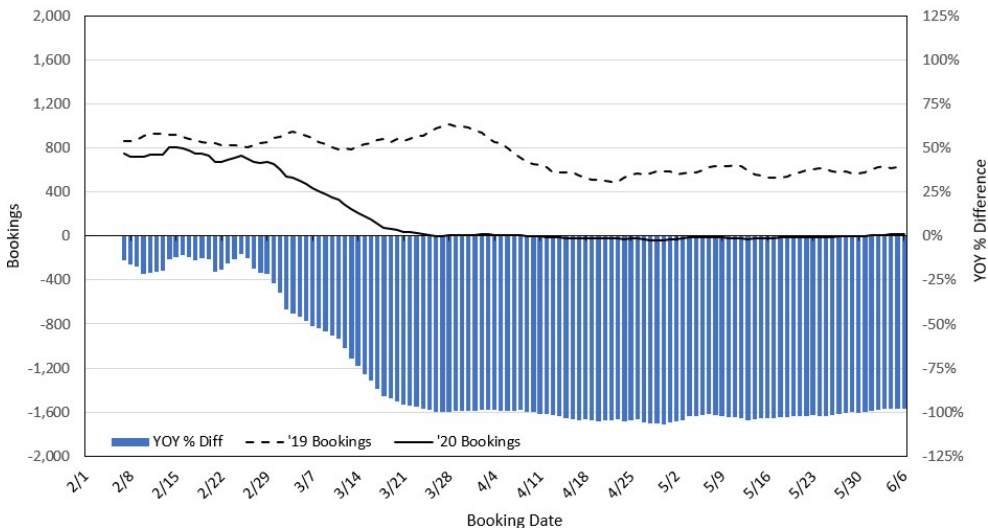
Travel Agency Bookings to Hawaii for Future Arrivals*
Based on a 7-day Moving Average, 2020 vs 2019
Japan



*Future Arrivals refers to all arrivals that are 'future' relative to the referenced booking date.
 Source: Global Agency Pro

Update: Jun 6, 2020

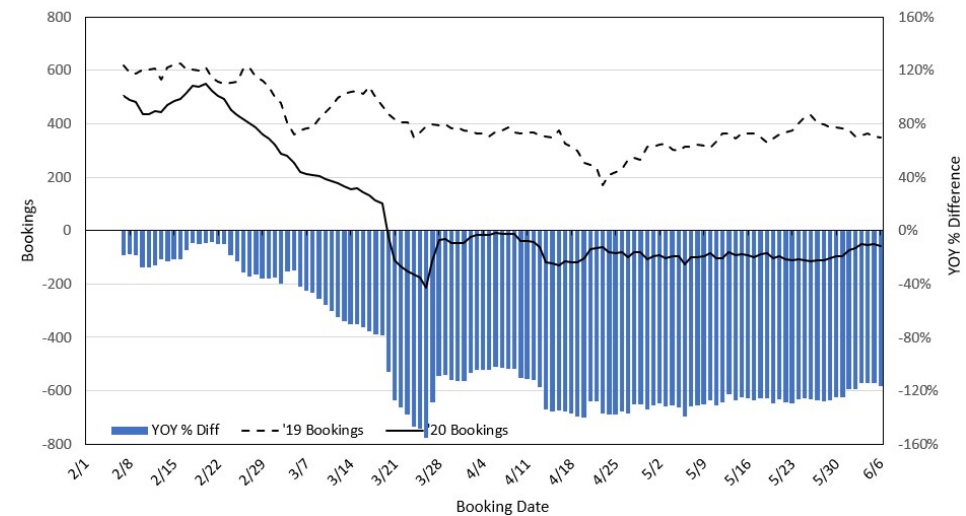
Travel Agency Bookings to Hawaii for Future Arrivals*
Based on a 7-day Moving Average, 2020 vs 2019
Canada



*Future Arrivals refers to all arrivals that are 'future' relative to the referenced booking date.
 Source: Global Agency Pro

Update: Jun 6, 2020

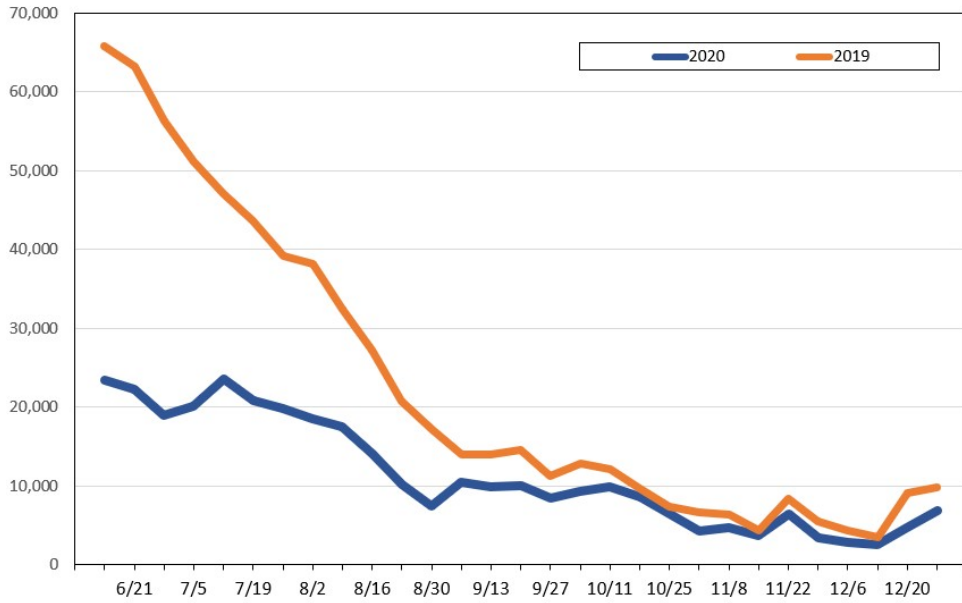
Travel Agency Bookings to Hawaii for Future Arrivals*
Based on a 7-day Moving Average, 2020 vs 2019
Australia



*Future Arrivals refers to all arrivals that are 'future' relative to the referenced booking date.
 Source: Global Agency Pro

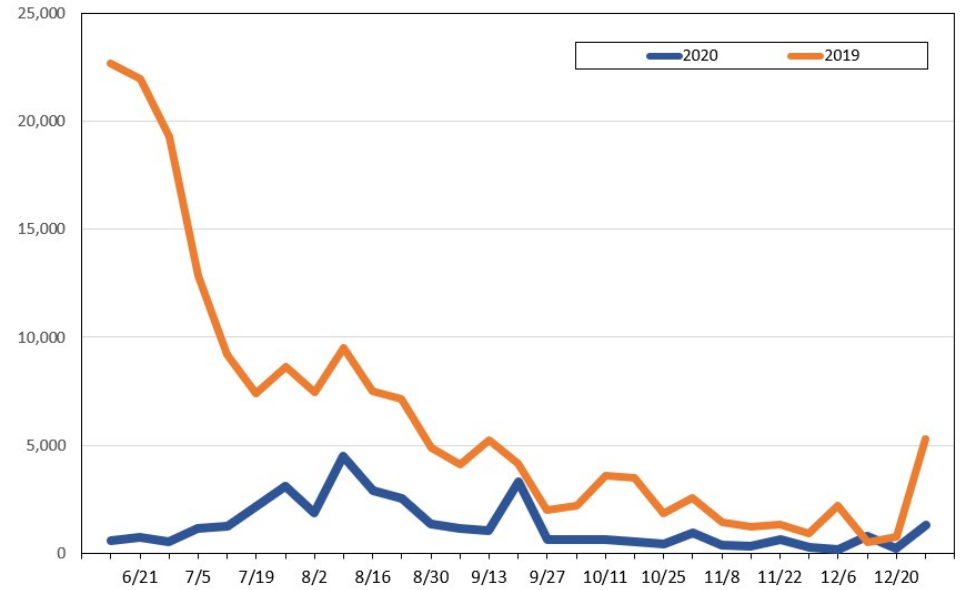
Update: Jun 6, 2020

Travel Agency Bookings for Future Travel to Hawai'i As of June 6, 2020
U.S.



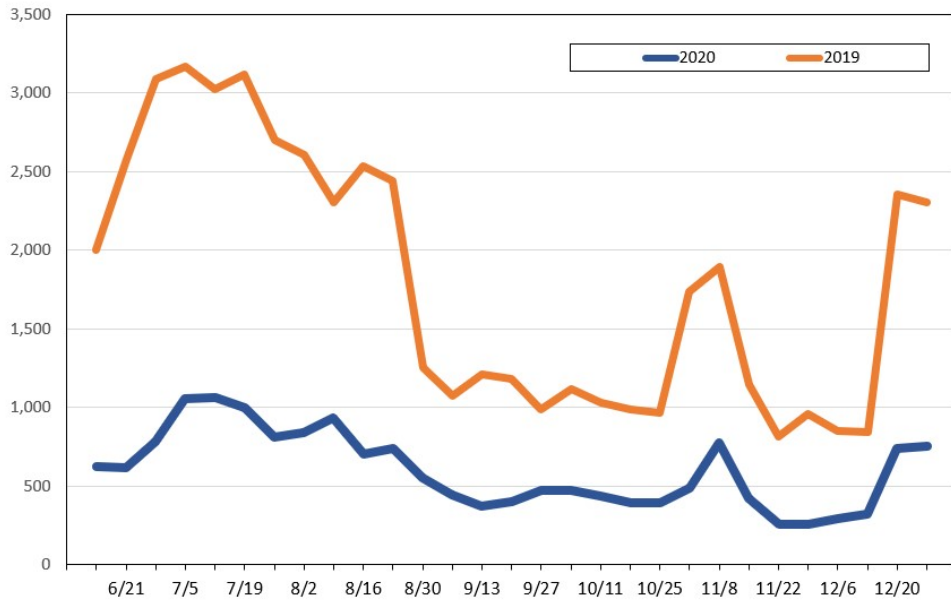
Source: Global Agency Pro, as of June 6, 2020

Travel Agency Bookings for Future Travel to Hawai'i As of June 6, 2020
Japan



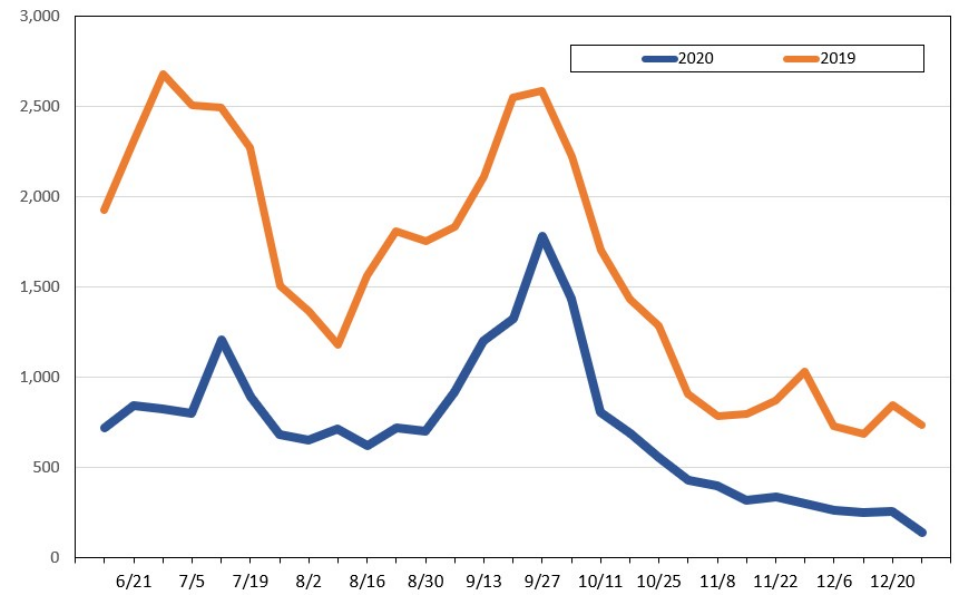
Source: Global Agency Pro, as of June 6, 2020

Travel Agency Bookings for Future Travel to Hawai'i As of June 6, 2020
Canada



Source: Global Agency Pro, as of June 6, 2020

Travel Agency Bookings for Future Travel to Hawai'i As of June 6, 2020
Australia



Source: Global Agency Pro, as of June 6, 2020