

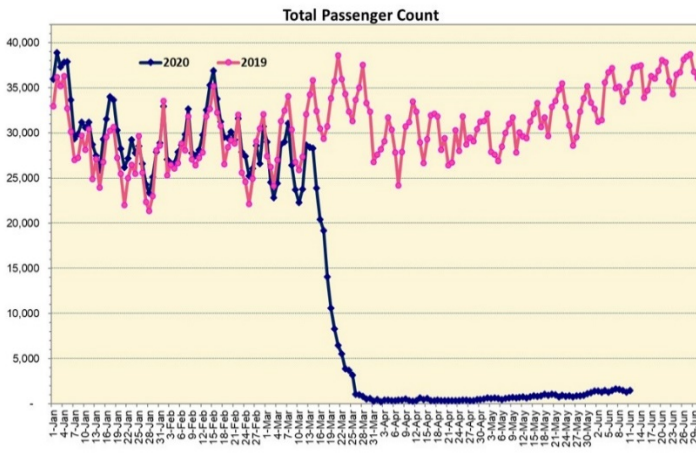
HTA COVID-19 UPDATE

(Issued: 6/12/20 @ 3:30pm)

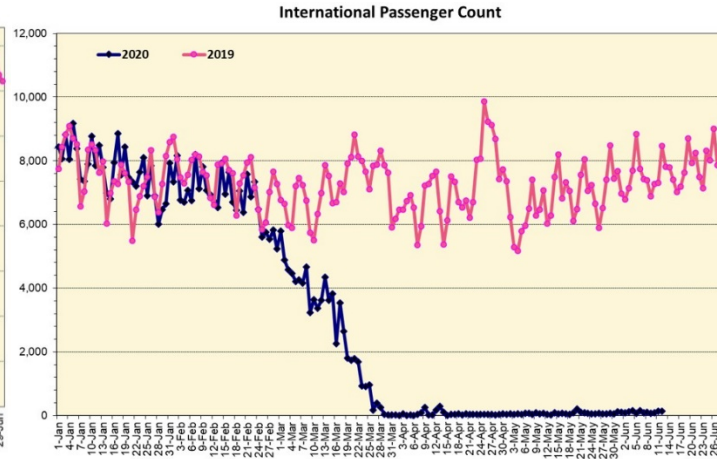
Novel Coronavirus in Hawaii

COVID-19 Positive* Cases

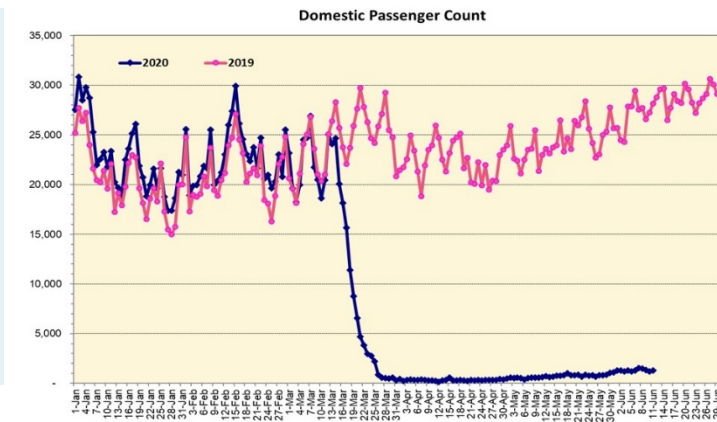
Cumulative totals as of 12:00 noon on June 12, 2020



Note: Excludes flights from Canada



Note: Excludes flights from Canada



Daily Passenger Count Table

06/11/2020	Domestic	International	Total
Oahu	1170	143	1313
Maui	81		81
Island of Hawaii	71		71
Kauai	0		0
State	1322	143	1465

6/12/20 Hawaii Passenger Arrivals by Air Update

Yesterday, 1626 people arrived in Hawaii. This table shows the number of people who arrived by air from out of state yesterday and does not include interisland travel. This data was collected from the Hawaii DOT new Mandatory Travel Declaration Form.

	Kona	Maui	Oahu	Lihue	Total
Crew	12	13	148		173
Transit		1	160		161
Military			202		202
Exempt			78		78
Relocate to Hawaii	5	6	87		98
Returning Resident	32	36	307		375
Visitor	51	38	479		568
Grand Total	100	94	1461	0	1655
Flights	3	2	14	0	19

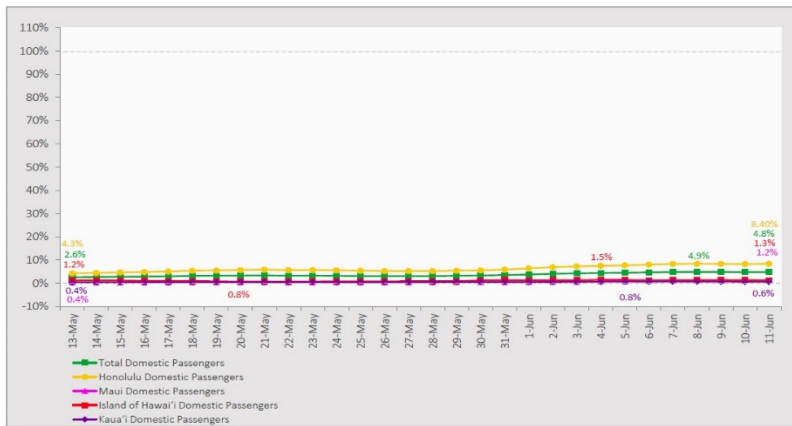
Statewide	Total
Total Cases	706 (15 new)
Released from Isolation†	627
Required Hospitalization	87
Deaths	17
BY COUNTY	Total
Hawaii County	
Total Cases	81
Released from Isolation†	81
Required Hospitalization	1
Deaths	0
Honolulu County	
Total Cases	472
Released from Isolation†	413
Required Hospitalization	62
Deaths	11
Kauai County	
Total Cases	21
Released from Isolation†	20
Required Hospitalization	1
Deaths	0
Maui County	
Total Cases	120
Released from Isolation†	113
Required Hospitalization	22
Deaths	6
HI Residents diagnosed outside of HI	12
County Pending	0

*includes presumptive and confirmed cases, data are preliminary and subject to change; note that CDC provides case counts according to states of residence.

†Isolation should be maintained until at least 3 days (72 hours) after resolution of fever and myalgia without the use of antipyretics OR at least 7 days have passed since symptom onset, whichever is longer.

7-Day Domestic by Island Moving Average Daily Passenger Volume

2020 Volume as Percentage of 2019 Volume
Through June 11, 2020



Source: HVCB analysis based on data from DBEDT
Note: Passenger volume figures include both visitors and residents.

Domestic by Island Month-to-Date and Year-to-Date Daily Passenger Volume

2020 Volume versus 2019 Volume
Through June 11, 2020

June 2020 (Month-to-Date through June 11)

	2020	2019	Volume Change	Percent Change
Honolulu	12,957	154,745	-141,788	-91.6%
Maui County	939	79,045	-78,106	-98.8%
Island of Hawai'i	440	34,700	-34,260	-98.7%
Kaua'i	159	26,362	-26,203	-99.4%
Total	14,495	294,852	-280,357	-95.1%

2020 (Year-to-Date through June 11)

	2020	2019	Volume Change	Percent Change
Honolulu	1,005,546	1,991,666	-986,120	-49.5%
Maui County	443,341	938,743	-495,402	-52.8%
Island of Hawai'i	218,106	439,614	-221,508	-50.4%
Kaua'i	149,342	328,014	-178,672	-54.5%
Total	1,816,335	3,698,037	-1,881,702	-50.9%

Source: HVCB analysis based on data from DBEDT
Note: Passenger volume figures include both visitors and residents. Total includes other international passengers. 2020 includes one additional day due to Leap Year (February 29th, 2020).

News Highlights

June 12, 2020

KHON2: [Businesses affected by tourism looking to other areas to bring in income](#)

Honolulu Star-Advertiser: [Lt. Gov. Josh Green's group recommends screening travelers for the coronavirus](#)

Honolulu Star-Advertiser: [7 new coronavirus cases on Oahu raise Hawaii's statewide total to 692](#)

Honolulu Star-Advertiser: [Lee Cataluna: A timeline for Hawaii to return to normal doesn't exist](#)

Honolulu Star-Advertiser: [Editorial: Make Hawaii's quarantine rules more effective](#)

Honolulu Star-Advertisers: [Iolani Palace needs kamaaina visitors to help keep its doors open and preserve historic Hawaiian treasures](#)

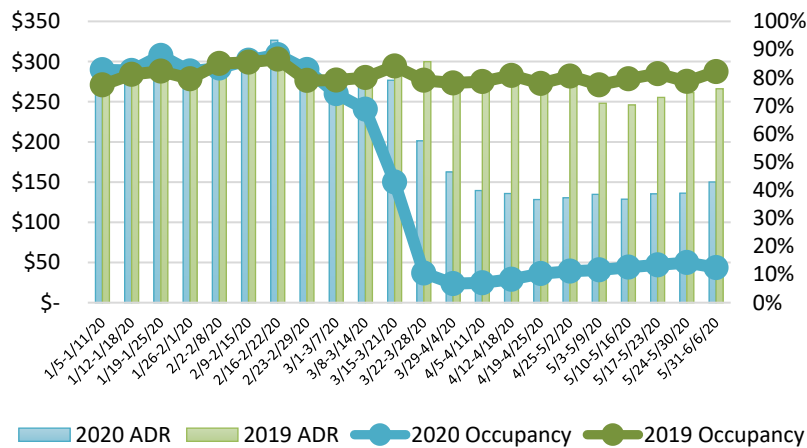
Hawaii Tribune-Herald: [Imiloa Center preps to begin phased reopening next month](#)

Honolulu Civil Beat: [Vacation Rental Owners Are Threatening To Sue Over Shutdown](#)

Hawaii Magazine: [What's Canceled and Closed in Hawaii Right Now— June 11, 2020](#)

Travel Weekly: [Hawaii grassroots campaign asks visitors to stay home](#)

State of Hawai'i Hotel Performance by Week - 2020 vs 2019



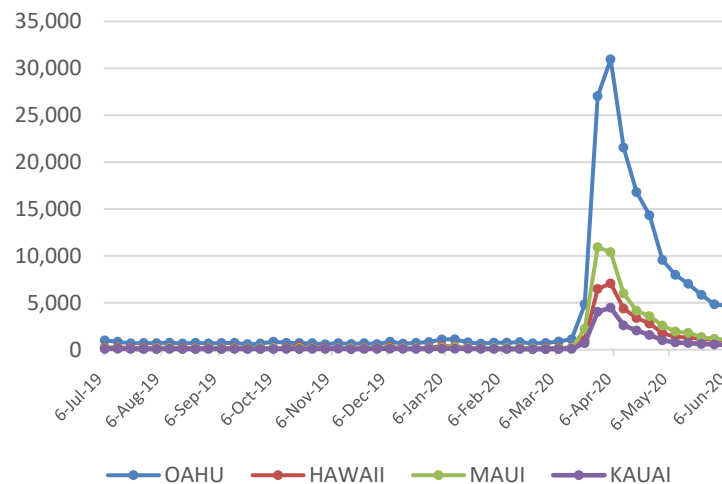
Source: STR, Inc. © Copyright 2020 Hawai'i Tourism Authority

Hawaii Hotel Performance Info:

For the week of May 31 – June 6, 2020

	Occupancy	ADR	RevPAR
State of Hawaii	12.4%	\$ 150.13	\$ 18.68
Oahu	10.6%	\$ 161.36	\$ 17.14
Maui County	10.6%	\$ 157.50	\$ 16.66
Kauai County	19.1%	\$ 133.36	\$ 25.45
Island of Hawaii	16.5%	\$ 133.59	\$ 22.10

2020 Initial Weekly Unemployment Claims by Island



Weekly Unemployment Initial Claims: June 6, 2020

State of Hawaii	7,370
C&C of Oahu	4,683
Hawaii County	930
Maui County	1,073
Kauai County	507
Agent (filed in Hawaii against another state)	177

Helpful Resources

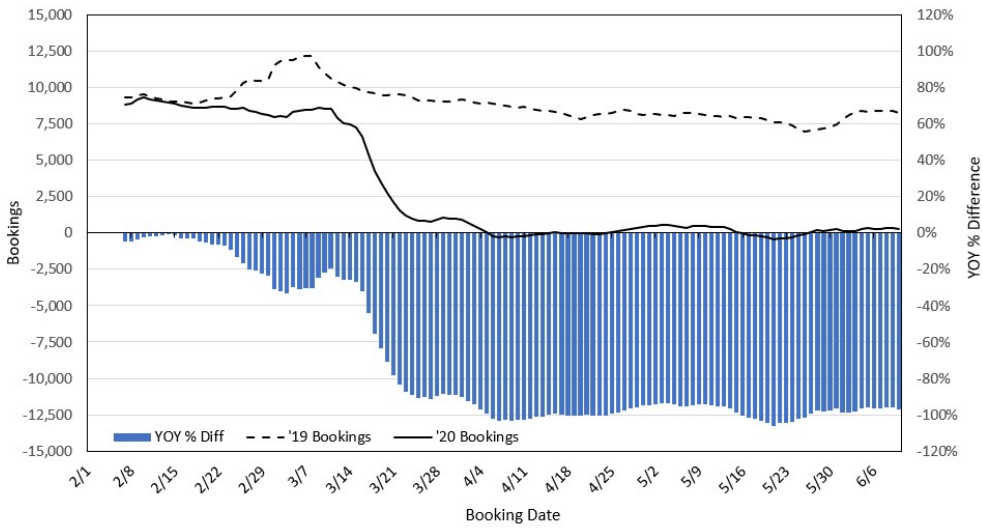
Department of Health
<https://hawaiiocovid19.com/>

Department of Health
<https://health.hawaii.gov/docd/advisories/novel-coronavirus-2019>

Dept. of Business, Economic Development & Tourism
<https://dbedt.hawaii.gov/economic/covid19/>

Department of Transportation
<https://hidot.hawaii.gov/coronavirus/>

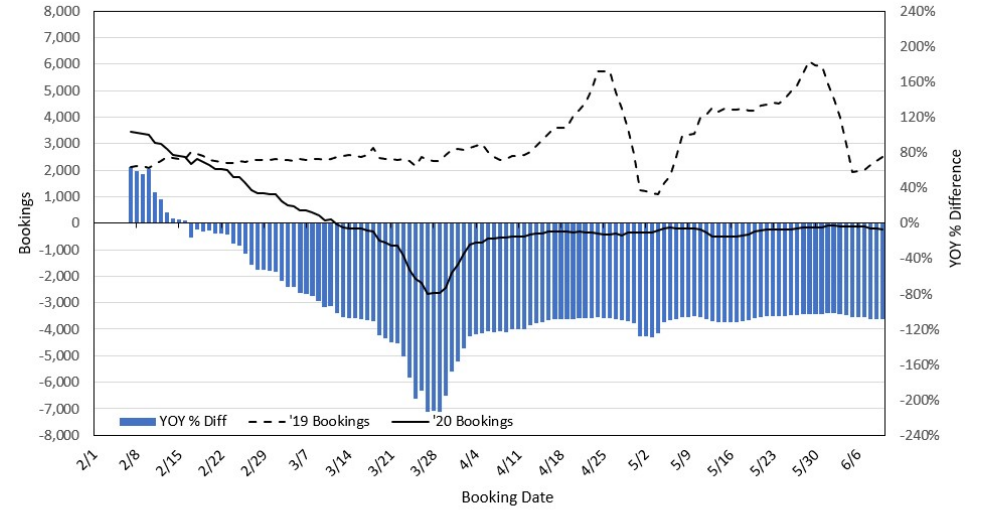
**Travel Agency Bookings to Hawaii for Future Arrivals*
Based on a 7-day Moving Average, 2020 vs 2019
U.S.**



*Future Arrivals refers to all arrivals that are 'future' relative to the referenced booking date.
Source: Global Agency Pro

Update: Jun 10, 2020

**Travel Agency Bookings to Hawaii for Future Arrivals*
Based on a 7-day Moving Average, 2020 vs 2019
Japan**



*Future Arrivals refers to all arrivals that are 'future' relative to the referenced booking date.
Source: Global Agency Pro

Update: Jun 10, 2020

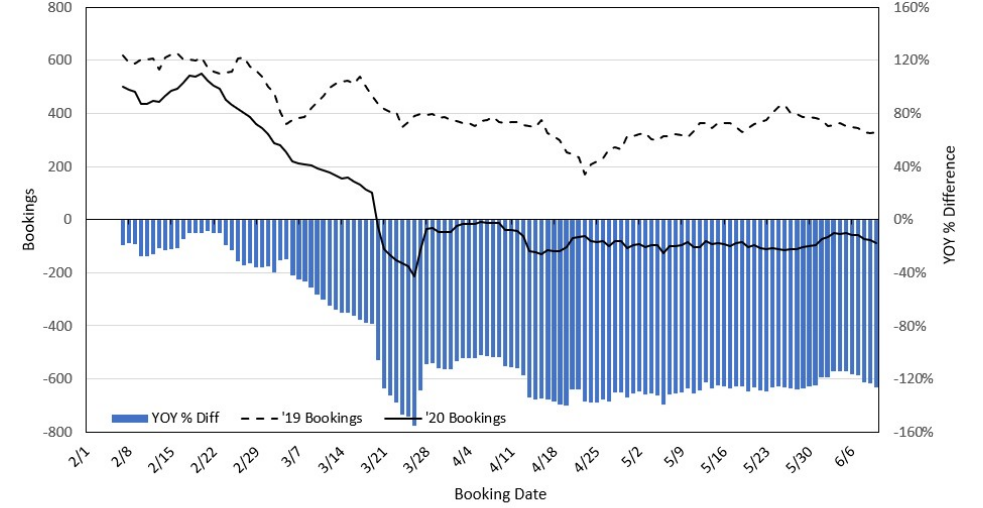
**Travel Agency Bookings to Hawaii for Future Arrivals*
Based on a 7-day Moving Average, 2020 vs 2019
Canada**



*Future Arrivals refers to all arrivals that are 'future' relative to the referenced booking date.
Source: Global Agency Pro

Update: Jun 10, 2020

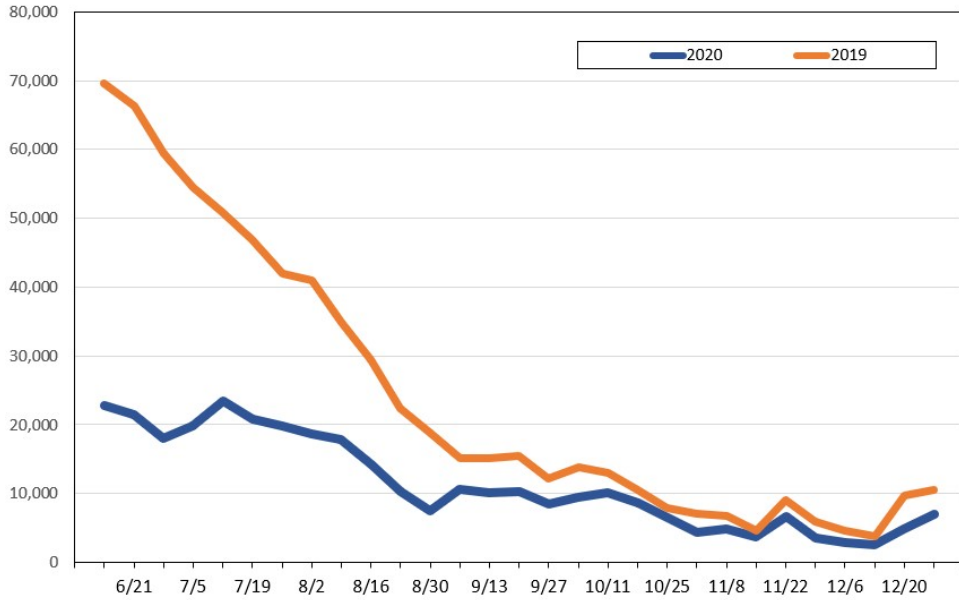
**Travel Agency Bookings to Hawaii for Future Arrivals*
Based on a 7-day Moving Average, 2020 vs 2019
Australia**



*Future Arrivals refers to all arrivals that are 'future' relative to the referenced booking date.
Source: Global Agency Pro

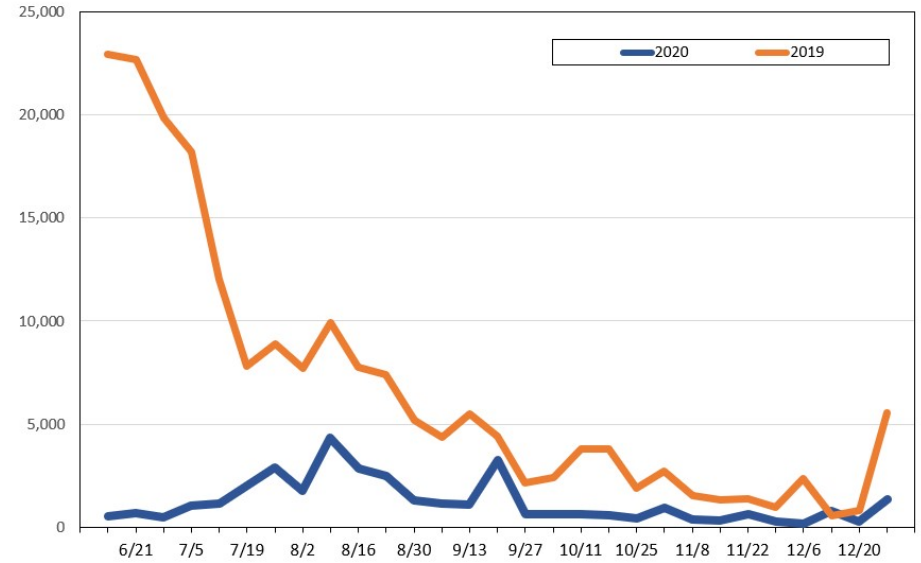
Update: Jun 10, 2020

Travel Agency Bookings for Future Travel to Hawai'i as of June 10, 2020
U.S.



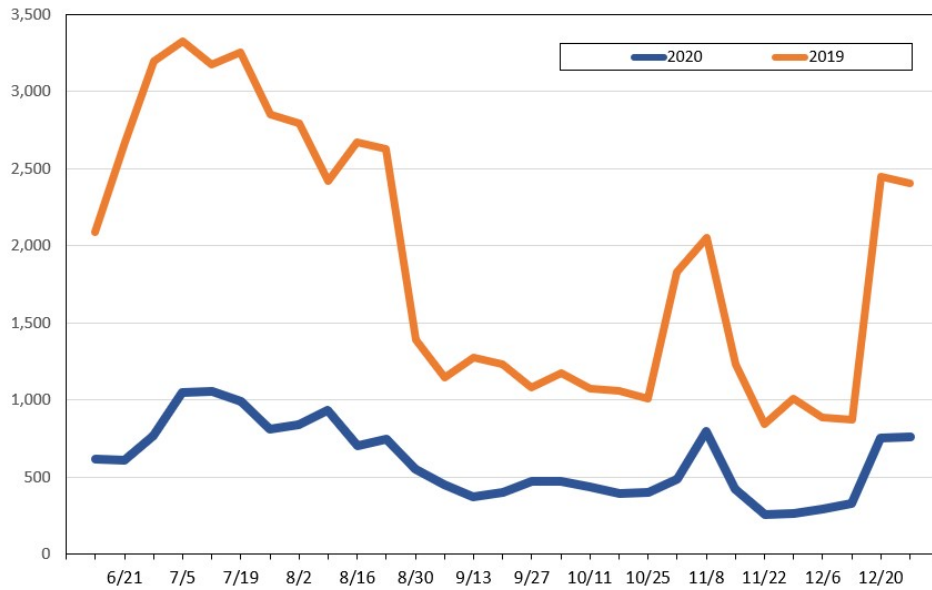
Source: Global Agency Pro, as of June 10, 2020

Travel Agency Bookings for Future Travel to Hawai'i as of June 10, 2020
Japan



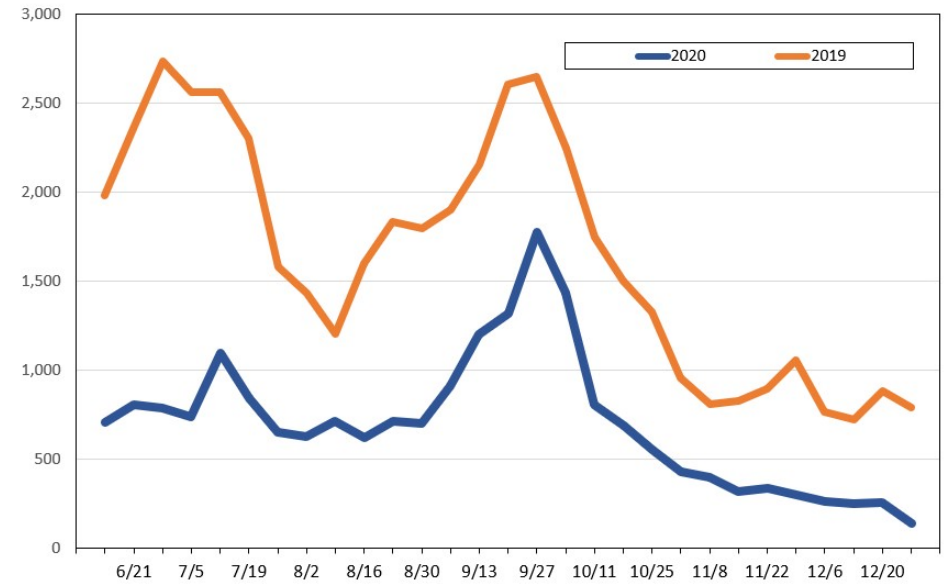
Source: Global Agency Pro, as of June 10, 2020

Travel Agency Bookings for Future Travel to Hawai'i as of June 10, 2020
Canada



Source: Global Agency Pro, as of June 10, 2020

Travel Agency Bookings for Future Travel to Hawai'i as of June 10, 2020
Australia



Source: Global Agency Pro, as of June 10, 2020