

HTA COVID-19 UPDATE

(Issued: 6/15/20 @ 3:30pm)

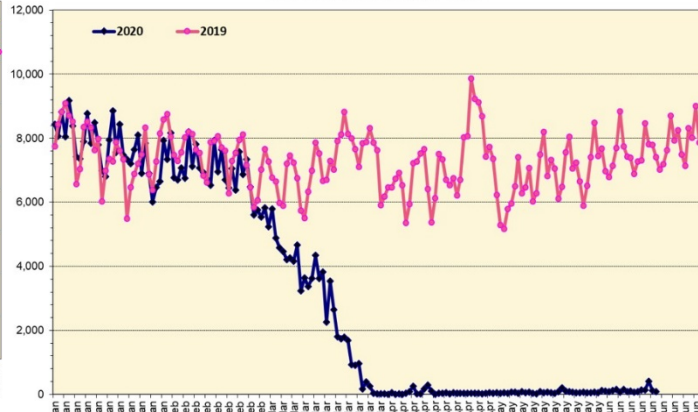
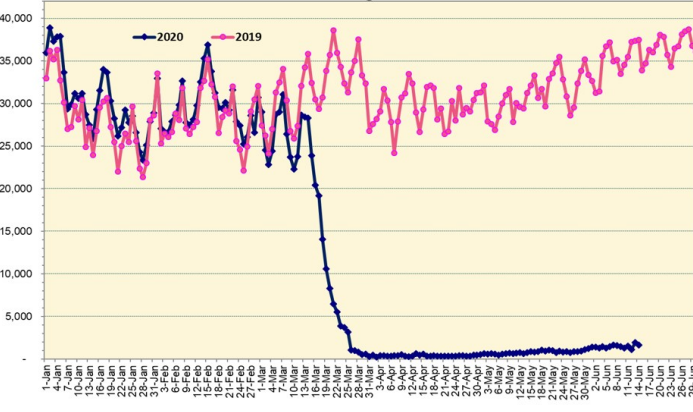
Novel Coronavirus in Hawaii

COVID-19 Positive* Cases

Cumulative totals as of 12:00 noon on June 15, 2020

Total Passenger Count

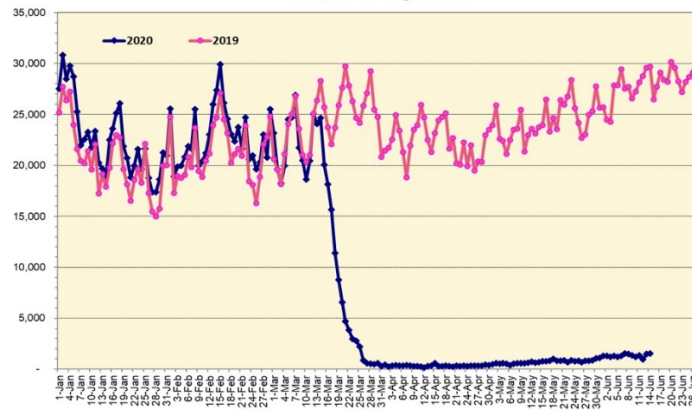
International Passenger Count



Note: Excludes flights from Canada

Note: Excludes flights from Canada

Domestic Passenger Count



Daily Passenger Count Table

06/14/2020	Domestic	International	Total
Oahu	1323	119	1442
Maui	97		97
Island of Hawaii	107		107
Kauai	0		0
State	1527	119	1646

6/15/20 Hawaii Passenger Arrivals by Air Update

Yesterday, 1847 people arrived in Hawaii. This table shows the number of people who arrived by air from out of state yesterday and does not include interisland travel. This data was collected from the Hawaii DOT new Mandatory Travel Declaration Form.

	Kona	Maui	Oahu	Lihue	Total
Crew	19	12	178		209
Transit			116		116
Military			185		185
Exempt			208		208
Relocate to Hawaii	11	10	77		98
Returning Resident	48	47	448		543
Visitor	67	40	381		488
Grand Total	145	109	1593	0	1847
Flights	7	2	13	0	22

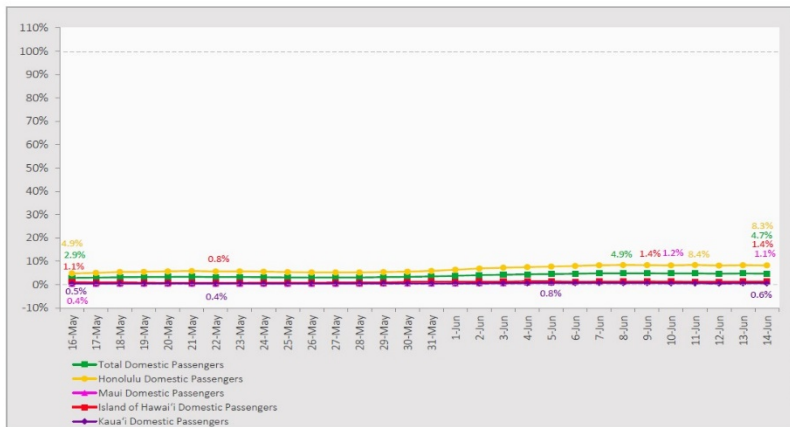
Statewide	Total
Total Cases	736 (8 new)
Released from Isolation†	627
Required Hospitalization	87
Deaths	17
BY COUNTY	Total
Hawaii County	
Total Cases	82
Released from Isolation†	81
Required Hospitalization	1
Deaths	0
Honolulu County	
Total Cases	501
Released from Isolation†	416
Required Hospitalization	66
Deaths	11
Kauai County	
Total Cases	21
Released from Isolation†	20
Required Hospitalization	1
Deaths	0
Maui County	
Total Cases	120
Released from Isolation†	113
Required Hospitalization	22
Deaths	6
HI Residents diagnosed outside of HI	12
County Pending	0

*includes presumptive and confirmed cases, data are preliminary and subject to change; note that CDC provides case counts according to states of residence.

†Isolation should be maintained until at least 3 days (72 hours) after resolution of fever and myalgia without the use of antipyretics OR at least 7 days have passed since symptom onset, whichever is longer.

7-Day Domestic by Island Moving Average Daily Passenger Volume

2020 Volume as Percentage of 2019 Volume
Through June 14, 2020



Source: HVCB analysis based on data from DBEDT
Note: Passenger volume figures include both visitors and residents.

Domestic by Island Month-to-Date and Year-to-Date Daily Passenger Volume

2020 Volume versus 2019 Volume
Through June 14, 2020

June 2020 (Month-to-Date through June 14)

	2020	2019	Volume Change	Percent Change
Honolulu	16,471	197,276	-180,805	-91.7%
Maui County	1,199	102,994	-101,795	-98.8%
Island of Hawai'i	625	44,785	-44,160	-98.6%
Kaua'i	229	33,962	-33,733	-99.3%
Total	18,524	379,017	-360,493	-95.1%

2020 (Year-to-Date through June 14)

	2020	2019	Volume Change	Percent Change
Honolulu	1,009,060	2,034,197	-1,025,137	-50.4%
Maui County	443,601	962,692	-519,091	-53.9%
Island of Hawai'i	218,291	449,699	-231,408	-51.5%
Kaua'i	149,412	335,614	-186,202	-55.5%
Total	1,820,364	3,782,202	-1,961,838	-51.9%

Source: HVCB analysis based on data from DBEDT
Note: Passenger volume figures include both visitors and residents. Total includes other international passengers. 2020 includes one additional day due to Leap Year (February 29th, 2020).

News Highlights

June 15, 2020

Hawaii News Now: [LIST: From bars to gatherings, here's how neighbor islands are reopening this week](#)

Honolulu Star-Advertiser: [Bikes, roller skates and strollers take over Kalakaua Avenue](#)

Honolulu Star-Advertiser: [Letters: Work with New Zealand, not Japan, on travel; Hawaii must reopen to visitors without delay; Rioting won't lead to social justice](#)

KHON2: [Mandatory inter-island travel and health form now available online](#)

KITV4: [Vacation rental owners, managers say they're suffering from COVID-19 changes](#)

Honolulu Star-Advertiser: [Lee Cataluna: Decades of warnings by Hawaii governors to diversify the economy never heeded](#)

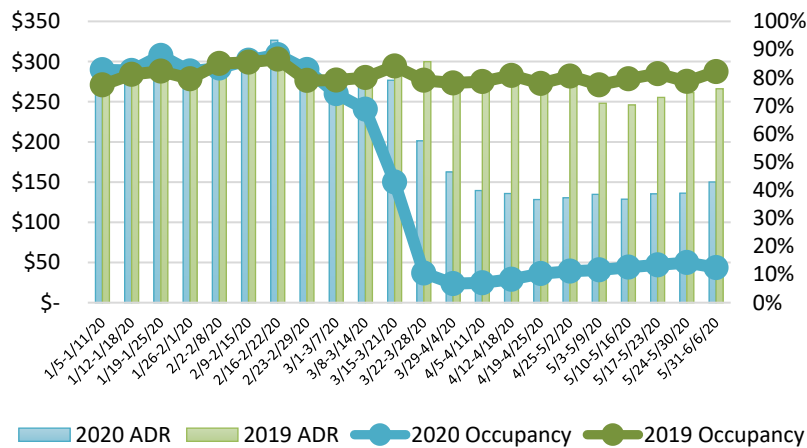
The Maui News: [Hotel workers rally for safe reopening, health care](#)

Travel Weekly: [Wanted: HTA leader for an uncertain future](#)

ABC News: [Hawaii grapples with Great Depression-level unemployment as tourism plummets](#)

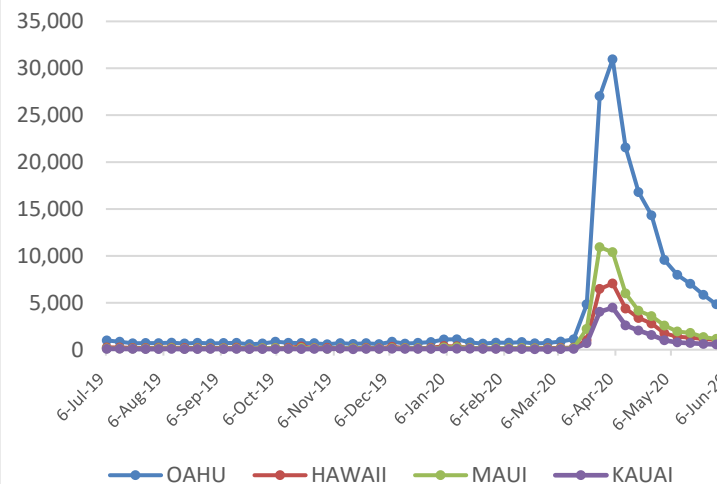
Travel Weekly: [For vacation rentals, a 'tricky balance' as they await OK to reopen](#)

State of Hawai'i Hotel Performance by Week - 2020 vs 2019



Source: STR, Inc. © Copyright 2020 Hawai'i Tourism Authority

2020 Initial Weekly Unemployment Claims by Island



Weekly Unemployment Initial Claims: June 6, 2020

State of Hawaii	7,370
C&C of Oahu	4,683
Hawaii County	930
Maui County	1,073
Kauai County	507
Agent (filed in Hawaii against another state)	177

Hawaii Hotel Performance Info:

For the week of May 31 – June 6, 2020

	Occupancy	ADR	RevPAR
State of Hawaii	12.4%	\$ 150.13	\$ 18.68
Oahu	10.6%	\$ 161.36	\$ 17.14
Maui County	10.6%	\$ 157.50	\$ 16.66
Kauai County	19.1%	\$ 133.36	\$ 25.45
Island of Hawaii	16.5%	\$ 133.59	\$ 22.10

Helpful Resources

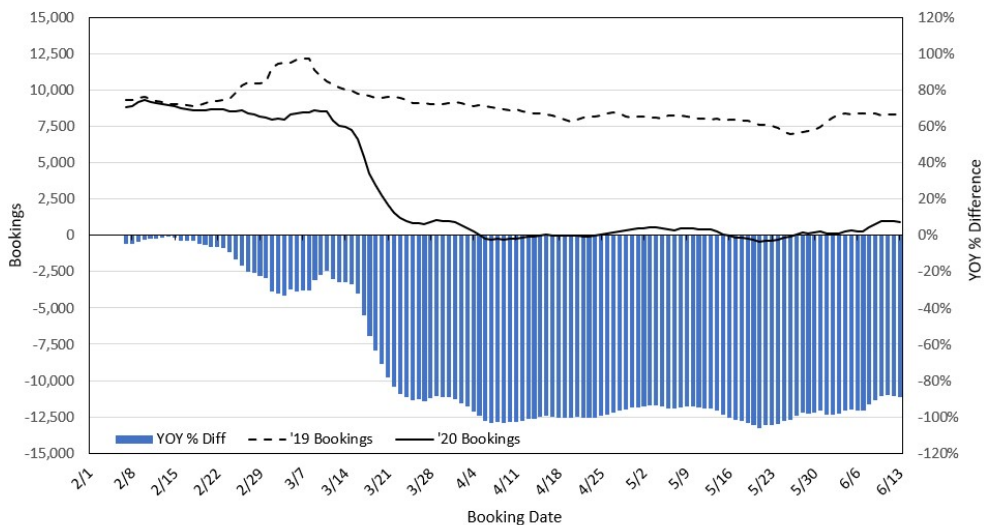
Department of Health
<https://hawaiiocovid19.com/>

Department of Health
<https://health.hawaii.gov/docd/advisories/novel-coronavirus-2019>

Dept. of Business, Economic Development & Tourism
<https://dbedt.hawaii.gov/economic/covid19/>

Department of Transportation
<https://hidot.hawaii.gov/coronavirus/>

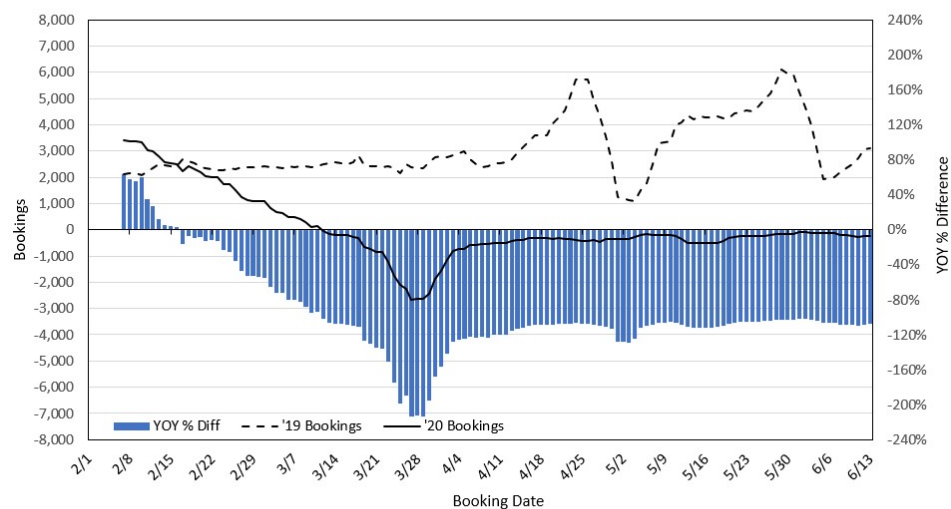
Travel Agency Bookings to Hawaii for Future Arrivals* Based on a 7-day Moving Average, 2020 vs 2019 U.S.



*Future Arrivals refers to all arrivals that are 'future' relative to the referenced booking date.
Source: Global Agency Pro

Update: Jun 13, 2020

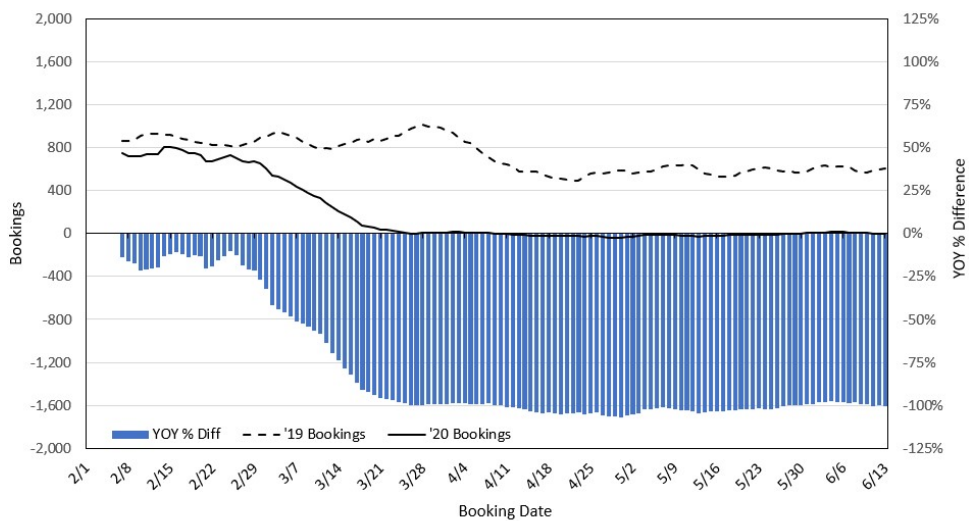
Travel Agency Bookings to Hawaii for Future Arrivals* Based on a 7-day Moving Average, 2020 vs 2019 Japan



*Future Arrivals refers to all arrivals that are 'future' relative to the referenced booking date.
Source: Global Agency Pro

Update: Jun 13, 2020

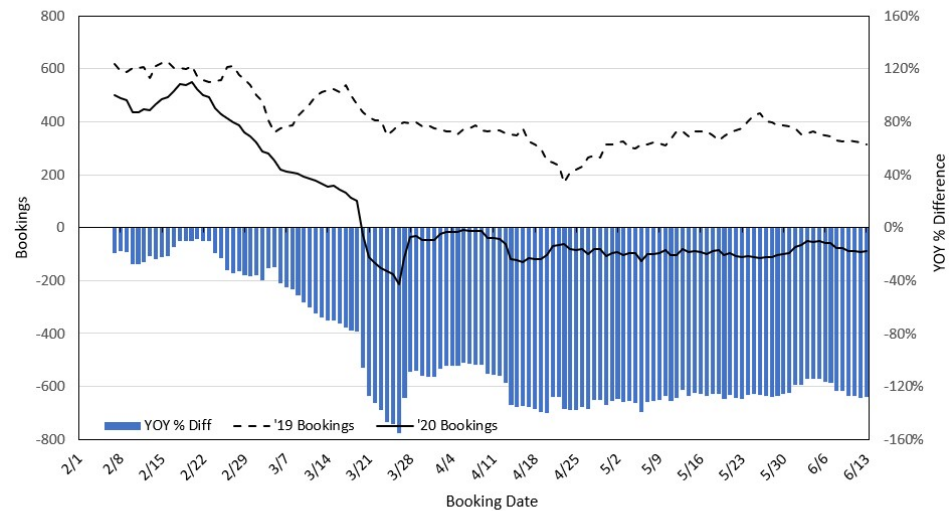
Travel Agency Bookings to Hawaii for Future Arrivals* Based on a 7-day Moving Average, 2020 vs 2019 Canada



*Future Arrivals refers to all arrivals that are 'future' relative to the referenced booking date.
Source: Global Agency Pro

Update: Jun 13, 2020

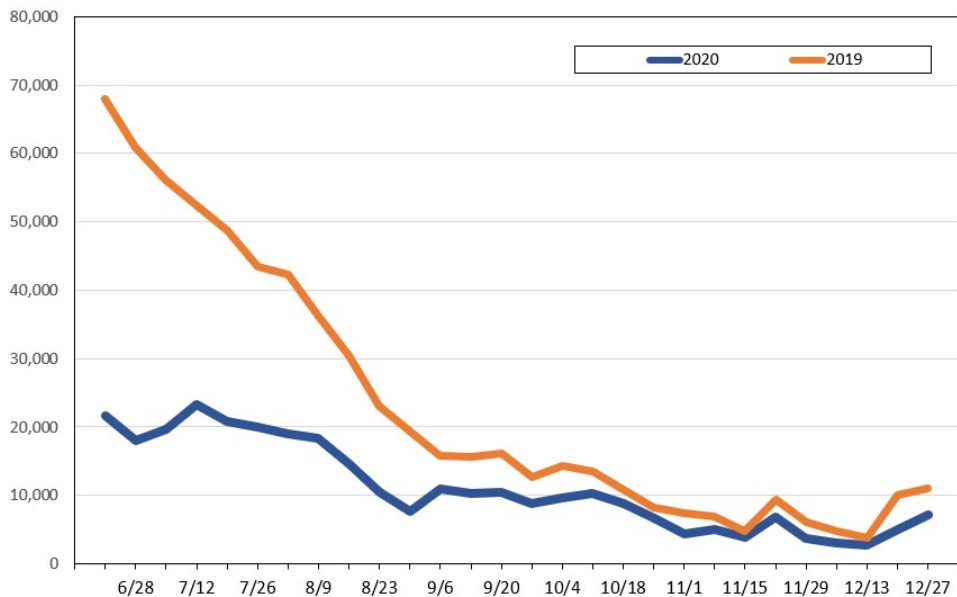
Travel Agency Bookings to Hawaii for Future Arrivals* Based on a 7-day Moving Average, 2020 vs 2019 Australia



*Future Arrivals refers to all arrivals that are 'future' relative to the referenced booking date.
Source: Global Agency Pro

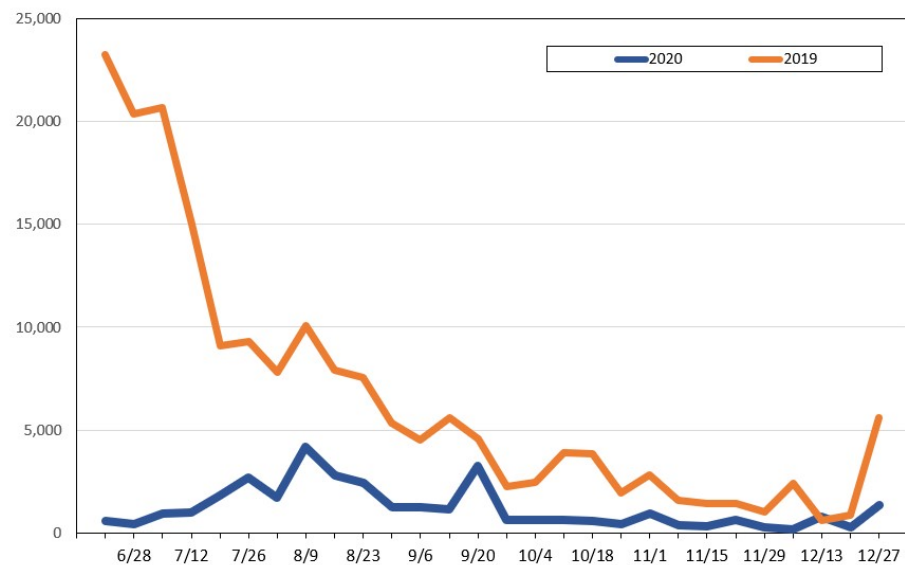
Update: Jun 13, 2020

**Travel Agency Bookings for Future Travel to Hawai'i as of June 13, 2020
U.S.**



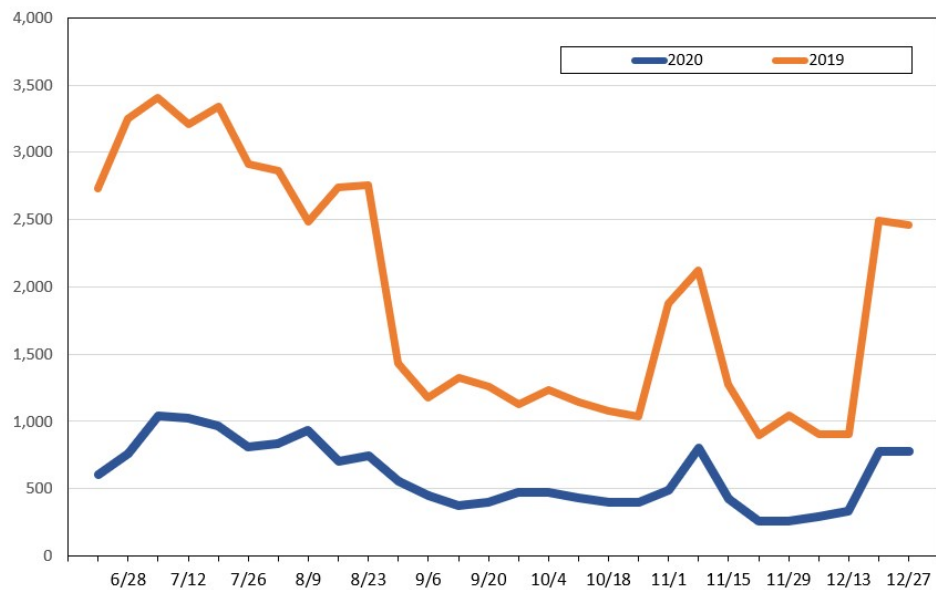
Source: Global Agency Pro, as of June 13, 2020

**Travel Agency Bookings for Future Travel to Hawai'i as of June 13, 2020
Japan**



Source: Global Agency Pro, as of June 13, 2020

**Travel Agency Bookings for Future Travel to Hawai'i as of June 13, 2020
Canada**



Source: Global Agency Pro, as of June 13, 2020

**Travel Agency Bookings for Future Travel to Hawai'i as of June 13, 2020
Australia**



Source: Global Agency Pro, as of June 13, 2020