

# HTA COVID-19 UPDATE

(Issued: 6/19/20 @ 2:30pm)

## Novel Coronavirus in Hawaii

COVID-19 Positive\* Cases

Cumulative totals as of 12:00 noon on June 19, 2020

Statewide	Total
Total Cases	<b>789</b> (27 new)
Released from Isolation†	642
Required Hospitalization	96
Deaths	17
BY COUNTY	Total
Hawaii County	
Total Cases	83
Released from Isolation†	81
Required Hospitalization	2
Deaths	0
Honolulu County	
Total Cases	551
Released from Isolation†	428
Required Hospitalization	70
Deaths	11
Kauai County	
Total Cases	22
Released from Isolation†	20
Required Hospitalization	1
Deaths	0
Maui County	
Total Cases	121
Released from Isolation†	113
Required Hospitalization	22
Deaths	6
HI Residents diagnosed outside of HI	12
County Pending	0

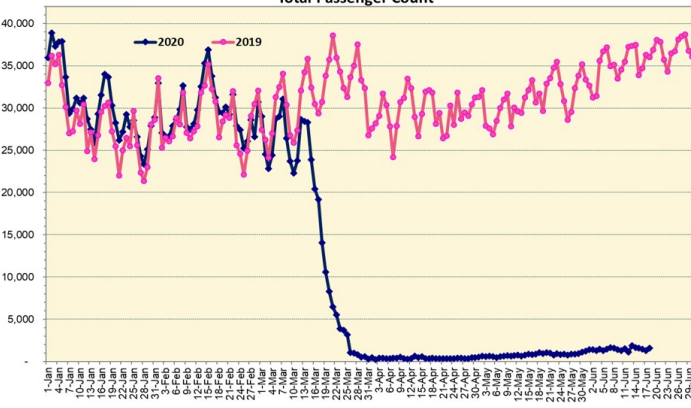
\*includes presumptive and confirmed cases, data are preliminary and subject to change; note that CDC provides case counts according to states of residence.

†Isolation should be maintained until at least 3 days (72 hours) after resolution of fever and myalgia without the use of antipyretics OR at least 7 days have passed since symptom onset, whichever is longer.

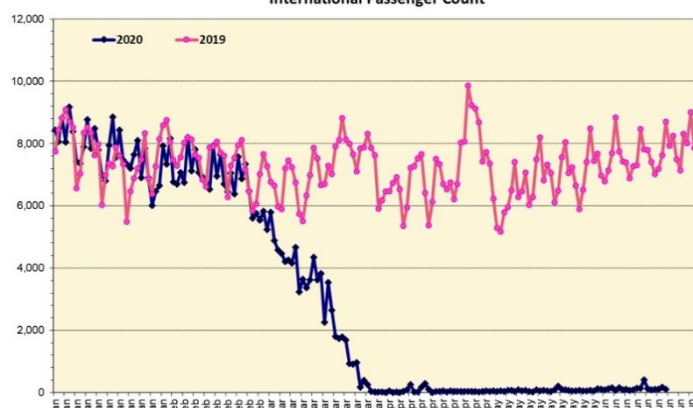
Total Passenger Count

International Passenger Count

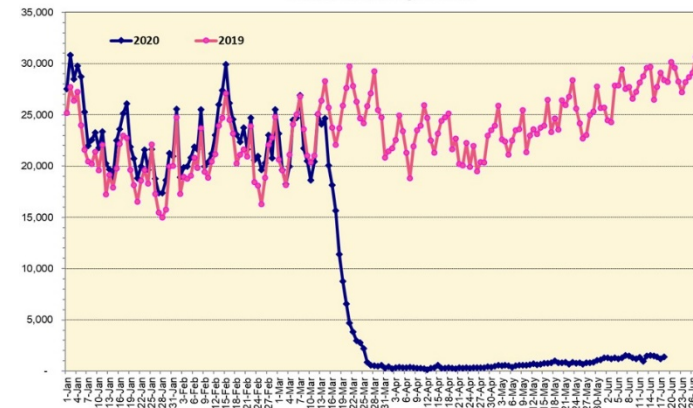
Domestic Passenger Count



Note: Excludes flights from Canada



Note: Excludes flights from Canada



### Daily Passenger Count Table

06/18/2020	Domestic	International	Total
Oahu	1215	172	1387
Maui	94		94
Island of Hawaii	94		94
Kauai	0		0
State	1403	172	1575

### 6/19/20 Hawaii Passenger Arrivals by Air Update

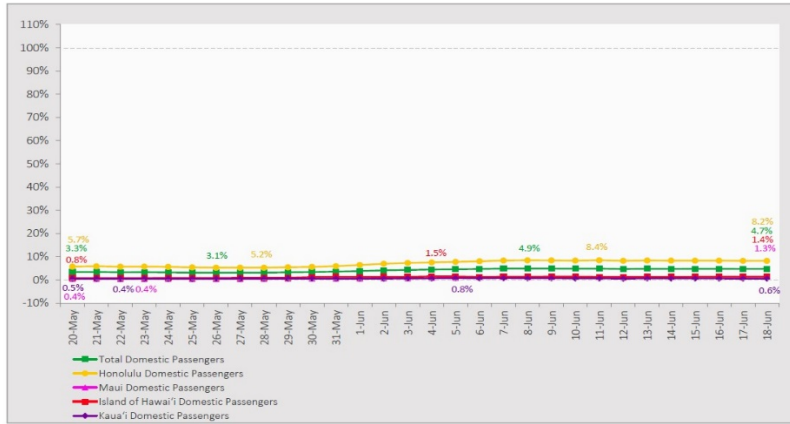
Yesterday, 1767 people arrived in Hawaii. This table shows the number of people who arrived by air from out of state yesterday and does not include interisland travel. This data was collected from the Hawaii DOT new Mandatory Travel Declaration Form.

	Kona	Maui	Oahu	Lihue	Total
Crew	9	12	142		163
Transit	1	1	126		128
Military		1	224		225
Exempt			79		79
Relocate to Hawaii	7	3	68		78
Returning Resident	48	58	413		519
Visitor	49	31	495		575
<b>Grand Total</b>	<b>114</b>	<b>106</b>	<b>1547</b>	<b>0</b>	<b>1767</b>
<b>Flights</b>	<b>3</b>	<b>2</b>	<b>13</b>	<b>0</b>	<b>18</b>

Market Impact Update: <https://www.dropbox.com/06/19/20 HTA COVID19 Update>

### 7-Day Domestic by Island Moving Average Daily Passenger Volume

2020 Volume as Percentage of 2019 Volume  
Through June 18, 2020



Source: HVCB analysis based on data from DBEDT  
Note: Passenger volume figures include both visitors and residents.

### Domestic by Island Month-to-Date and Year-to-Date Daily Passenger Volume

2020 Volume versus 2019 Volume  
Through June 18, 2020

June 2020 (Month-to-Date through June 18)

	2020	2019	Volume Change	Percent Change
Honolulu	21,268	255,113	-233,845	-91.7%
Maui County	1,622	133,304	-131,682	-98.8%
Island of Hawai'i	793	59,097	-58,304	-98.7%
Kaua'i	266	44,937	-44,671	-99.4%
<b>Total</b>	<b>23,949</b>	<b>492,451</b>	<b>-468,502</b>	<b>-95.1%</b>

2020 (Year-to-Date through June 18)

	2020	2019	Volume Change	Percent Change
Honolulu	1,013,857	2,092,034	-1,078,177	-51.5%
Maui County	444,024	993,002	-548,978	-55.3%
Island of Hawai'i	218,459	464,011	-245,552	-52.9%
Kaua'i	149,449	346,589	-197,140	-56.9%
<b>Total</b>	<b>1,825,789</b>	<b>3,895,636</b>	<b>-2,069,847</b>	<b>-53.1%</b>

Source: HVCB analysis based on data from DBEDT  
Note: Passenger volume figures include both visitors and residents. Total includes other international passengers. 2020 includes one additional day due to Leap Year (February 29th, 2020).

## News Highlights

June 19, 2020

**Honolulu Star-Advertiser:**

[Coronavirus infections spike will not stall reopening Hawaii, officials say](#)

**Honolulu Star-Advertiser:**

[Oklahoma visitor dies of apparent drowning while breaking 14-day passenger quarantine](#)

**Hawaii News Now:** [The new bar experience on Oahu: No live music. No big groups. And temp checks.](#)

**West Hawaii Today:** [AG Connors proposes bills for managing emergencies](#)

**The Garden Island:** [A phased reopening](#)

**The Garden Island:** [Virus count climbs; one new COVID-19 case on Kauai](#)

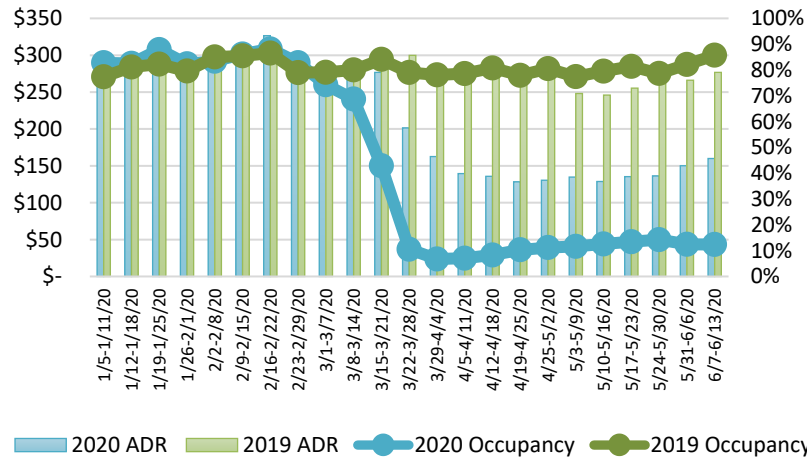
**Hawaii Tribune-Herald:** [AG proposes measures aimed at improving state's response during pandemics](#)

**Travel Weekly:** [Waikiki Aquarium to reopen June 29](#)

**Honolulu Civil Beat:** [Reports: Thousands More Likely To Soon Suffer Severe Financial Hardship In Hawaii](#)

**Honolulu Civil Beat:** [Hawaii Has Lots Of Issues To Figure Out Before Tourism Can Ramp Up](#)

### State of Hawai'i Hotel Performance by Week - 2020 vs 2019



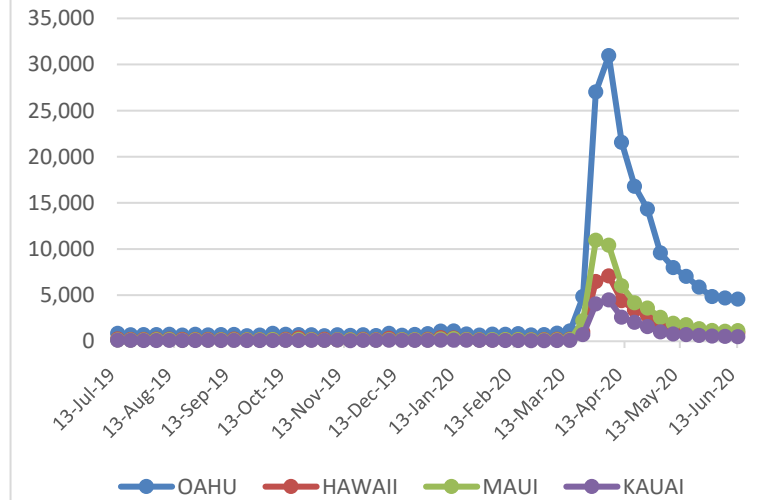
Source: STR, Inc. © Copyright 2020 Hawai'i Tourism Authority

### Hawaii Hotel Performance Info:

For the week of June 7 – June 13, 2020

	Occupancy	ADR	RevPAR
<b>State of Hawaii</b>	12.4%	\$ 159.96	\$ 19.76
<b>Oahu</b>	10.8%	\$ 163.50	\$ 17.60
<b>Maui County</b>	10.9%	\$ 156.54	\$ 17.10
<b>Kauai County</b>	16.9%	\$ 156.76	\$ 26.43
<b>Island of Hawaii</b>	16.8%	\$ 157.57	\$ 26.54

### 2020 Initial Weekly Unemployment Claims by Island



### Weekly Unemployment Initial Claims: June 13, 2020

<b>State of Hawaii</b>	7,272
<b>C&amp;C of Oahu</b>	4,555
<b>Hawaii County</b>	931
<b>Maui County</b>	1,134
<b>Kauai County</b>	485
<b>Agent (filed in Hawaii against another state)</b>	197

### Helpful Resources

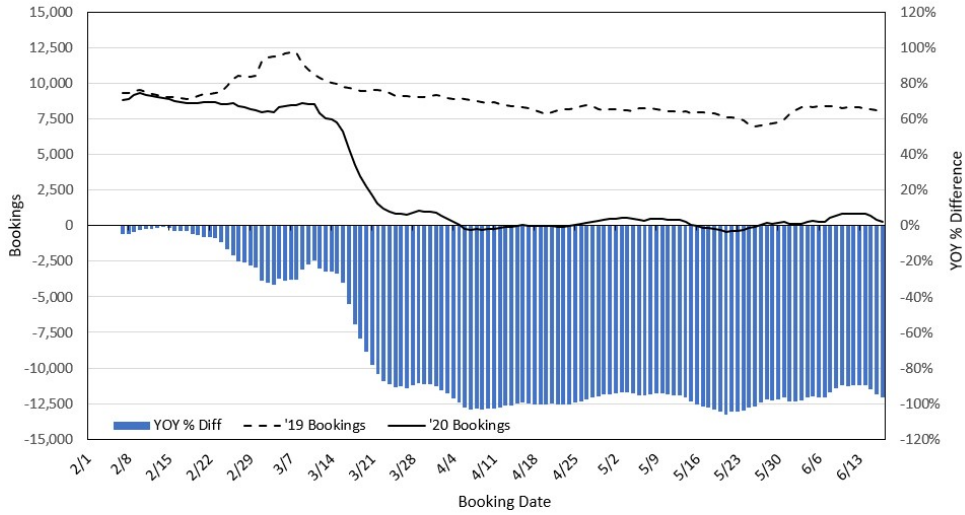
**Department of Health**  
<https://hawaiiocovid19.com/>

**Department of Health**  
<https://health.hawaii.gov/docd/advisories/novel-coronavirus-2019>

**Dept. of Business, Economic Development & Tourism**  
<https://dbedt.hawaii.gov/economic/covid19/>

**Department of Transportation**  
<https://hidot.hawaii.gov/coronavirus/>

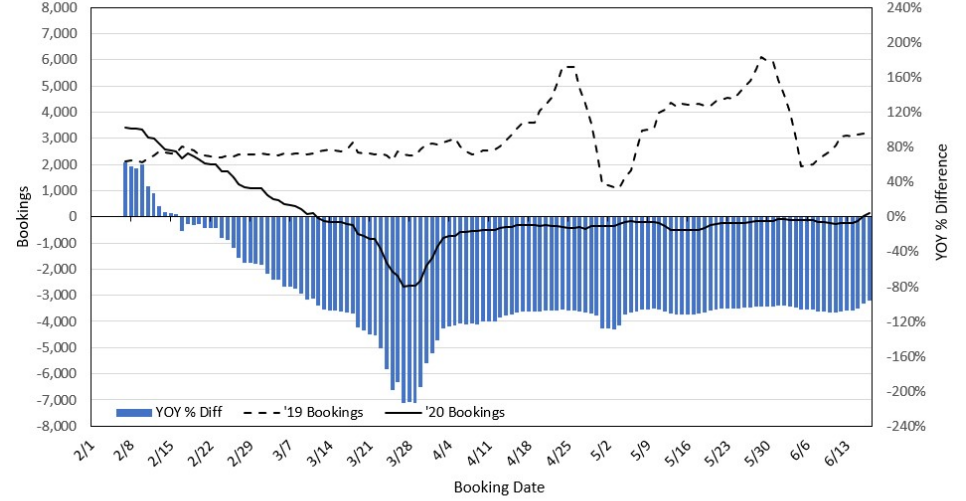
### Travel Agency Bookings to Hawaii for Future Arrivals\* Based on a 7-day Moving Average, 2020 vs 2019 U.S.



\*Future Arrivals refers to all arrivals that are 'future' relative to the referenced booking date.  
Source: Global Agency Pro

Update: Jun 17, 2020

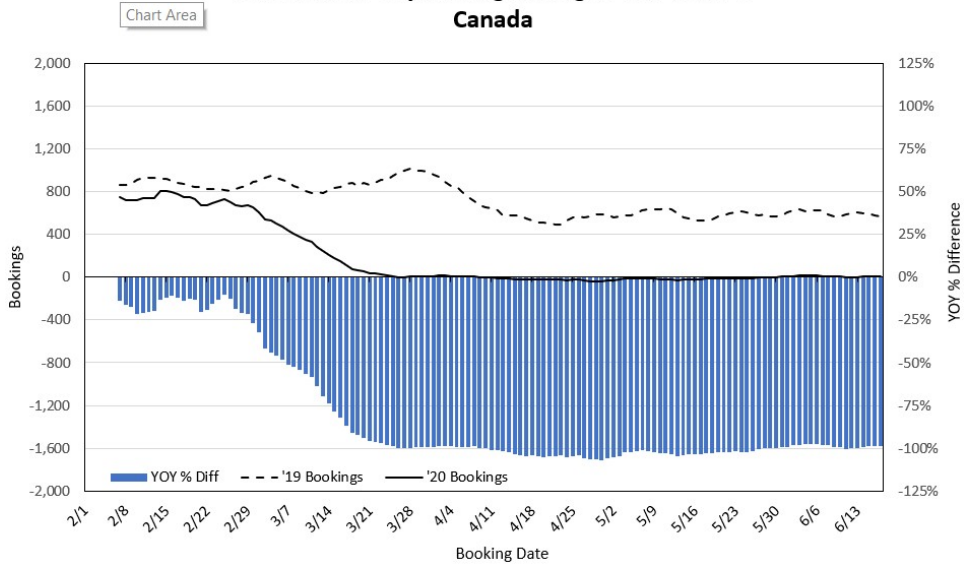
### Travel Agency Bookings to Hawaii for Future Arrivals\* Based on a 7-day Moving Average, 2020 vs 2019 Japan



\*Future Arrivals refers to all arrivals that are 'future' relative to the referenced booking date.  
Source: Global Agency Pro

Update: Jun 17, 2020

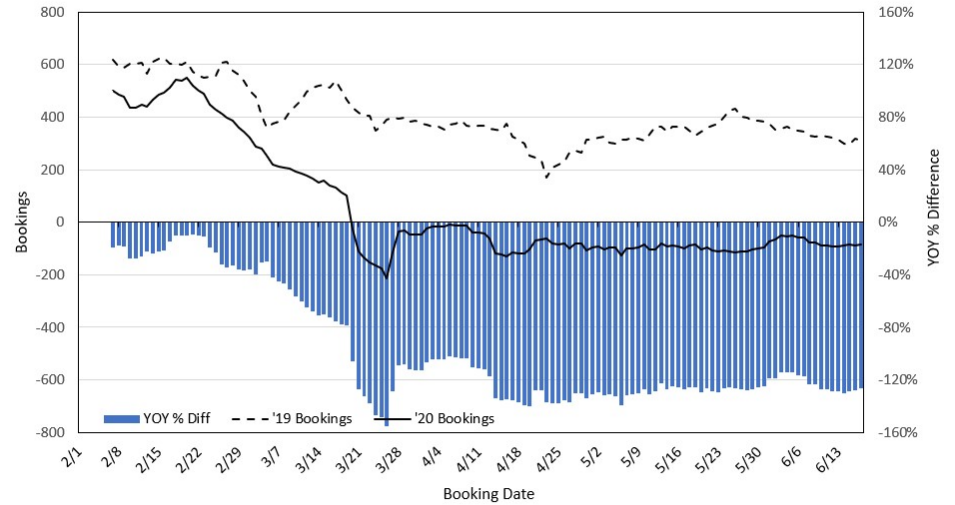
### Travel Agency Bookings to Hawaii for Future Arrivals\* Based on a 7-day Moving Average, 2020 vs 2019 Canada



\*Future Arrivals refers to all arrivals that are 'future' relative to the referenced booking date.  
Source: Global Agency Pro

Update: Jun 17, 2020

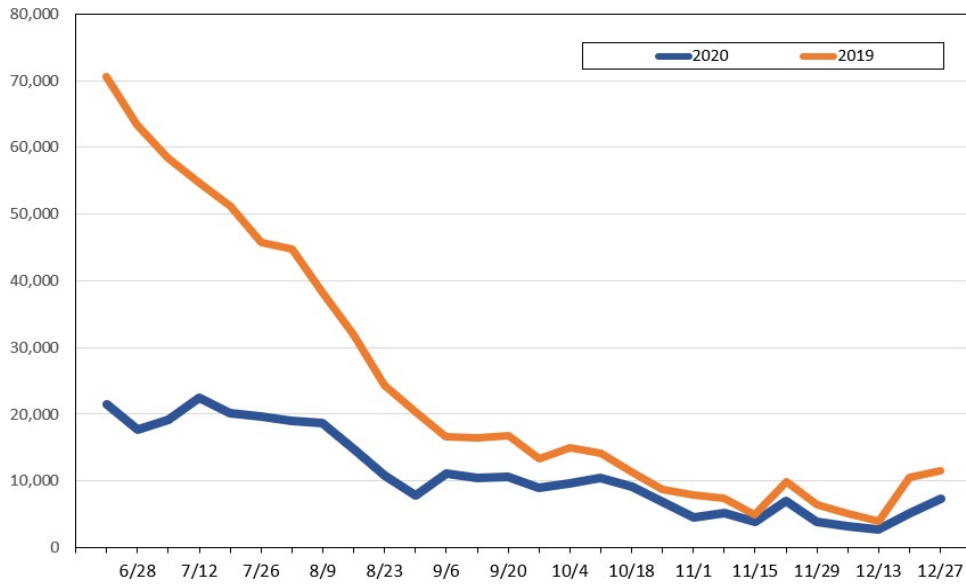
### Travel Agency Bookings to Hawaii for Future Arrivals\* Based on a 7-day Moving Average, 2020 vs 2019 Australia



\*Future Arrivals refers to all arrivals that are 'future' relative to the referenced booking date.  
Source: Global Agency Pro

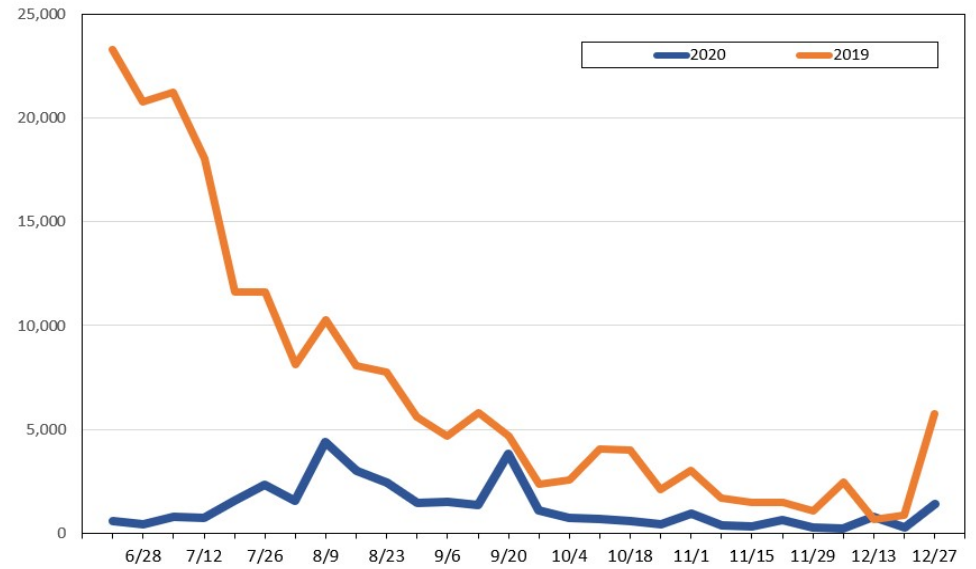
Update: Jun 17, 2020

**Travel Agency Bookings for Future Travel to Hawai'i as of June 17, 2020  
U.S.**



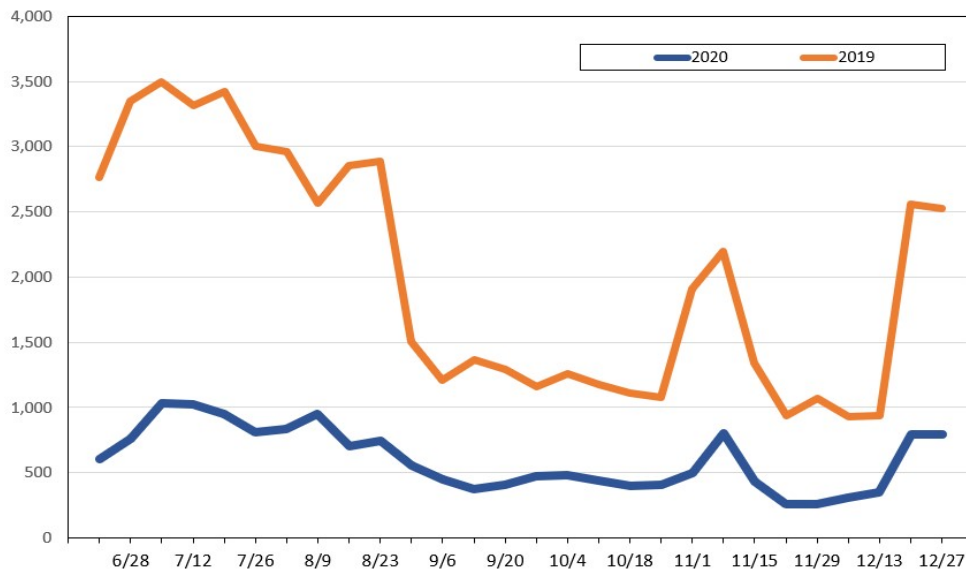
Source: Global Agency Pro, as of June 17, 2020

**Travel Agency Bookings for Future Travel to Hawai'i as of June 17, 2020  
Japan**



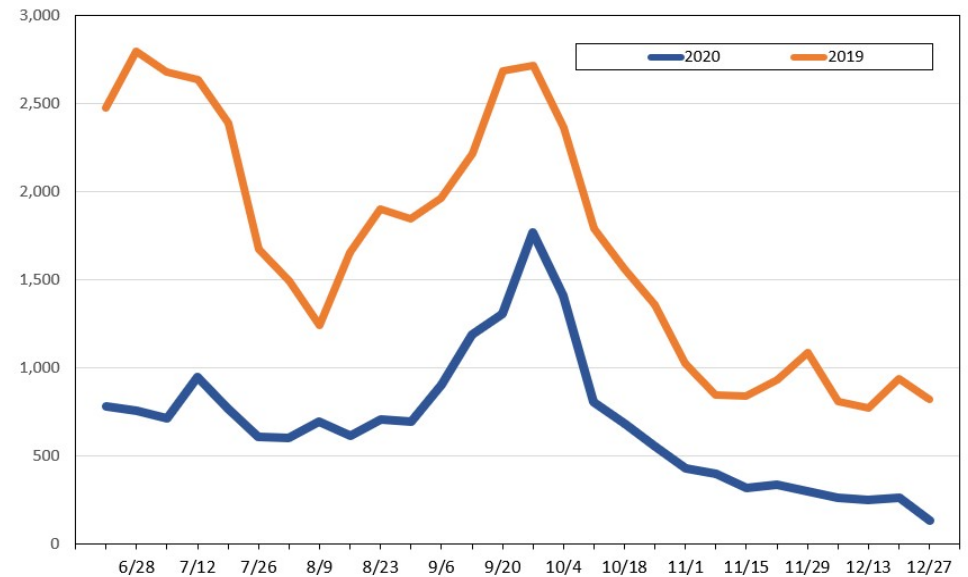
Source: Global Agency Pro, as of June 17, 2020

**Travel Agency Bookings for Future Travel to Hawai'i as of June 17, 2020  
Canada**



Source: Global Agency Pro, as of June 17, 2020

**Travel Agency Bookings for Future Travel to Hawai'i as of June 17, 2020  
Australia**



Source: Global Agency Pro, as of June 17, 2020