

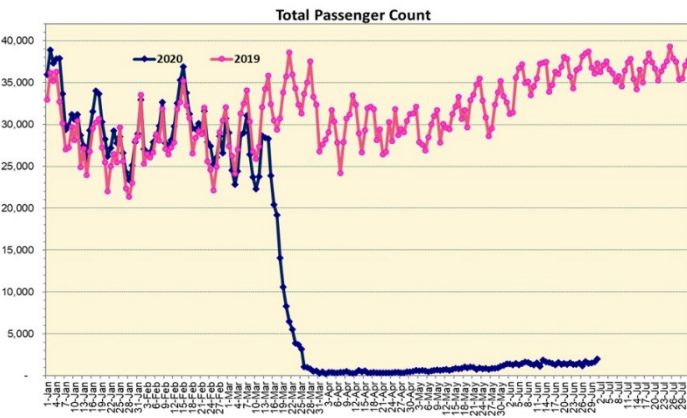
HTA COVID-19 UPDATE

(Issued: 7/2/20 @ 4:30pm)

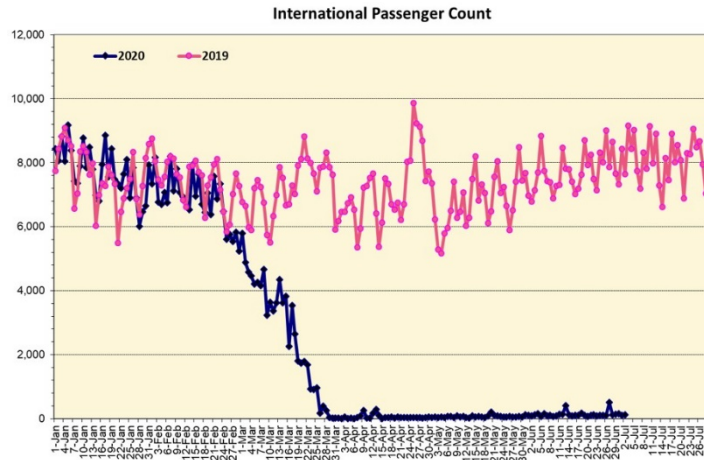
Novel Coronavirus in Hawaii

COVID-19 Positive* Cases

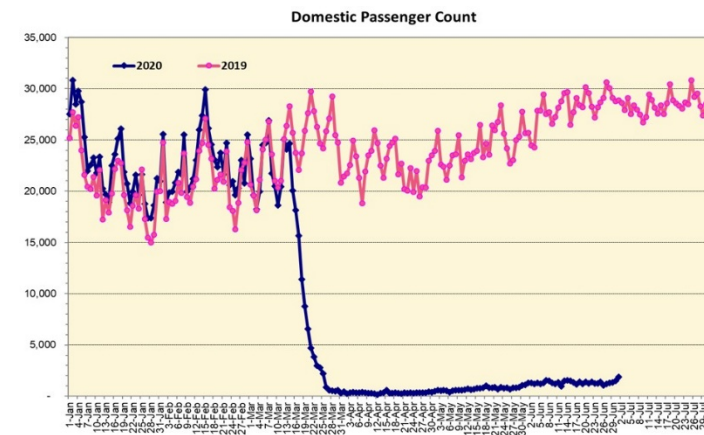
Cumulative totals as of 12:00 noon on July 2, 2020



Note: Excludes flights from Canada



Note: Excludes flights from Canada



Daily Passenger Count Table

07/01/2020	Domestic	International	Total
Oahu	1519	100	1619
Maui	208		208
Island of Hawaii	97		97
Kauai	57		57
State	1881	100	1981

7/2/20 Hawaii Passenger Arrivals by Air Update

Yesterday, 2424 people arrived in Hawaii. This table shows the number of people who arrived by air from out of state yesterday and does not include interisland travel. This data was collected from the Hawaii DOT new Mandatory Travel Declaration Form.

	Kona	Maui	Oahu	Lihue	Total
Crew	6	18	240	6	270
Transit			96		96
Military		9	423		432
Exempt			106		106
Relocate to Hawaii	7	38	196	9	250
Returning Resident	42	82	385	7	516
Visitor	48	79	593	34	754
Grand Total	103	226	2039	56	2424
Flights	1	3	19	1	24

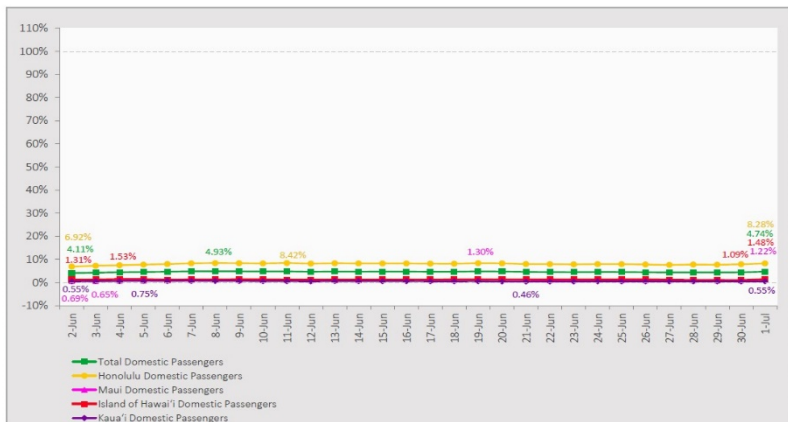
Statewide	Total
Total Cases	946 (20 new)
Released from Isolation†	746
Required Hospitalization	116
Deaths	18
BY COUNTY	Total
Hawaii County	
Total Cases	90
Released from Isolation†	86
Required Hospitalization	3
Deaths	0
Honolulu County	
Total Cases	676
Released from Isolation†	525
Required Hospitalization	86
Deaths	12
Kauai County	
Total Cases	38
Released from Isolation†	20
Required Hospitalization	1
Deaths	0
Maui County	
Total Cases	125
Released from Isolation†	115
Required Hospitalization	25
Deaths	6
HI Residents diagnosed outside of HI	17
County Pending	0

*includes presumptive and confirmed cases, data are preliminary and subject to change; note that CDC provides case counts according to states of residence.

†Isolation should be maintained until at least 3 days (72 hours) after resolution of fever and myalgia without the use of antipyretics OR at least 7 days have passed since symptom onset, whichever is longer.

7-Day Domestic by Island Moving Average Daily Passenger Volume

2020 Volume as Percentage of 2019 Volume
Through July 1, 2020



Source: HVCB analysis based on data from DBEDT
Note: Passenger volume figures include both visitors and residents.

Domestic by Island Month-to-Date and Year-to-Date Daily Passenger Volume

2020 Volume versus 2019 Volume
Through July 1, 2020

July 2020 (Month-to-Date through July 1)

	2020	2019	Volume Change	Percent Change
Honolulu	1,519	14,925	-13,406	-89.8%
Maui County	208	8,137	-7,929	-97.4%
Island of Hawai'i	97	3,560	-3,463	-97.3%
Kaua'i	57	2,503	-2,446	-97.7%
Total	1,881	29,125	-27,244	-93.5%

2020 (Year-to-Date through July 1)

	2020	2019	Volume Change	Percent Change
Honolulu	1,029,308	2,282,800	-1,253,492	-54.9%
Maui County	445,208	1,097,598	-652,390	-59.4%
Island of Hawai'i	219,064	509,748	-290,684	-57.0%
Kaua'i	149,660	382,131	-232,471	-60.8%
Total	1,843,240	4,272,277	-2,429,037	-56.9%

Source: HVCB analysis based on data from DBEDT
Note: Passenger volume figures include both visitors and residents. Total includes other international passengers. 2020 includes one additional day due to Leap Year (February 29th, 2020).

News Highlights

July 2, 2020

Honolulu Star-Advertiser: [Return of domestic air travel will be boon for Hawaii tourism](#)

Hawaii Tribune-Herald: [County Council urges quick roll out of coronavirus relief funds](#)

West Hawaii Today: [United resumes nonstop service to Kona](#)

TravelAge West: [Travel Advisors and Suppliers Share Frustration Regarding Lack of Hawaii Reopening Date](#)

USA Today: [Q&A: I'm traveling to Hawaii. Do I need a coronavirus test?](#)

The Points Guy: [Hawaiian Airlines returns to Las Vegas, New York and 6 more US cities in August](#)

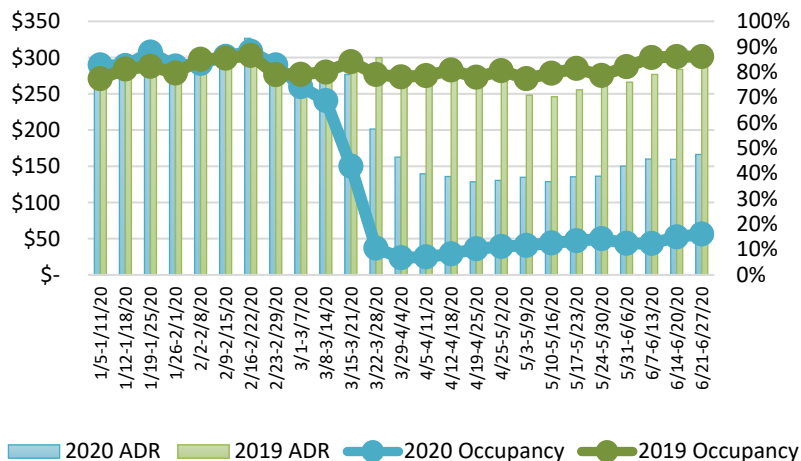
Skift: [How U.S. Airlines Are Trying to Stop the Pandemic Spreading on Flights](#)

TravelAge West: [Pretested Visitors to Hawaii Can Bypass State's Quarantine Starting August 1](#)

USA Today: ['I walked off the plane': Travelers irked by inconsistent face mask use amid coronavirus pandemic](#)

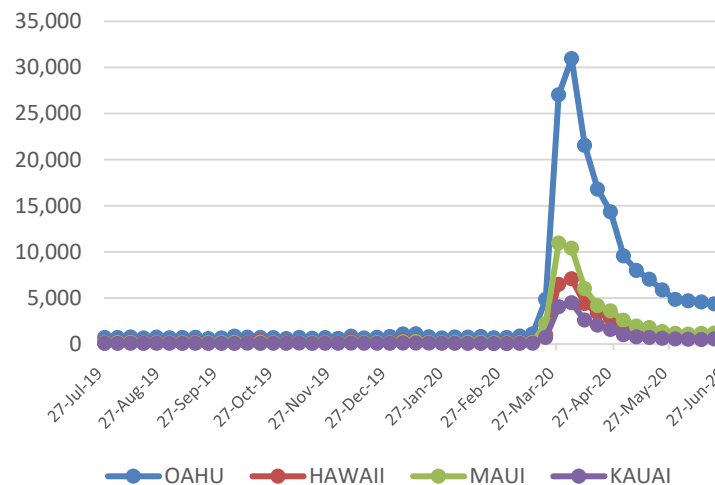
CNN: [More flights to Hawaii once quarantine not mandatory](#)

State of Hawai'i Hotel Performance by Week - 2020 vs 2019



Source: STR, Inc. © Copyright 2020 Hawai'i Tourism Authority

2020 Initial Weekly Unemployment Claims by Island



Hawaii Hotel Performance Info: For the week of June 21 – June 27, 2020

	Occupancy	ADR	RevPAR
State of Hawaii	16.1%	\$ 166.34	\$ 26.77
Oahu	15.0%	\$ 175.31	\$ 26.30
Maui County	10.9%	\$ 151.52	\$ 16.46
Kauai County	21.6%	\$ 163.71	\$ 35.30
Island of Hawaii	24.4%	\$ 154.80	\$ 37.84

Weekly Unemployment Initial Claims: June 27, 2020

State of Hawaii	8,219
C&C of Oahu	5,090
Hawaii County	1,153
Maui County	1,241
Kauai County	537
Agent (filed in Hawaii against another state)	198

Helpful Resources

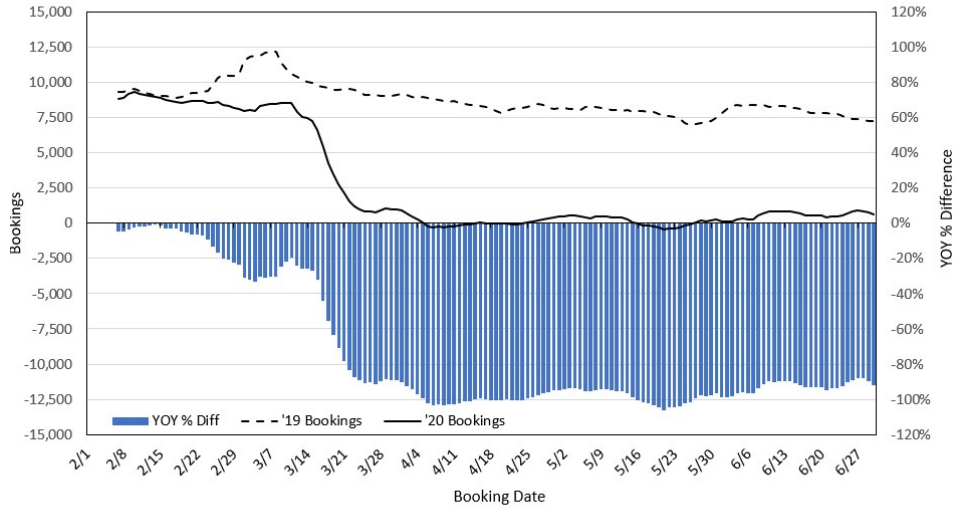
Department of Health
<https://hawaiiocovid19.com/>

Department of Health
<https://health.hawaii.gov/docd/advisories/novel-coronavirus-2019>

Dept. of Business, Economic Development & Tourism
<https://dbedt.hawaii.gov/economic/covid19/>

Department of Transportation
<https://hidot.hawaii.gov/coronavirus/>

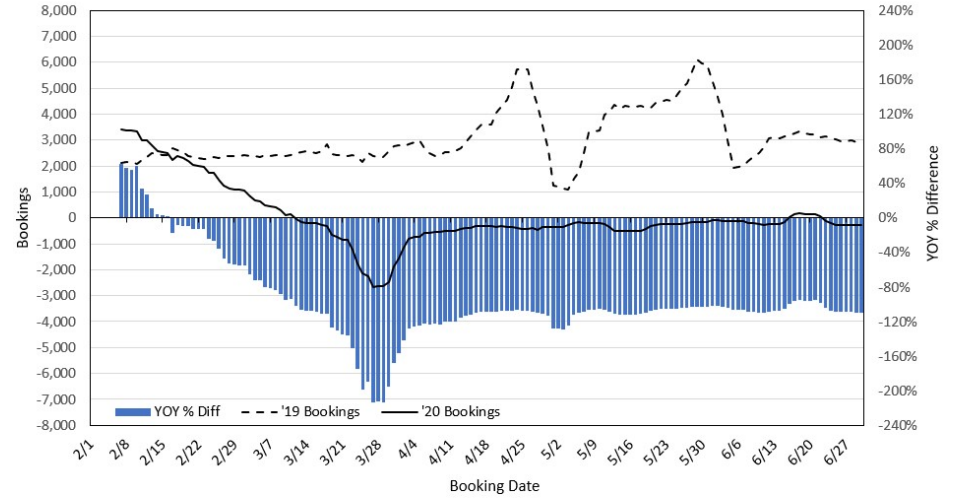
**Travel Agency Bookings to Hawaii for Future Arrivals*
Based on a 7-day Moving Average, 2020 vs 2019
U.S.**



*Future Arrivals refers to all arrivals that are 'future' relative to the referenced booking date.
Source: Global Agency Pro

Update: Jun 30, 2020

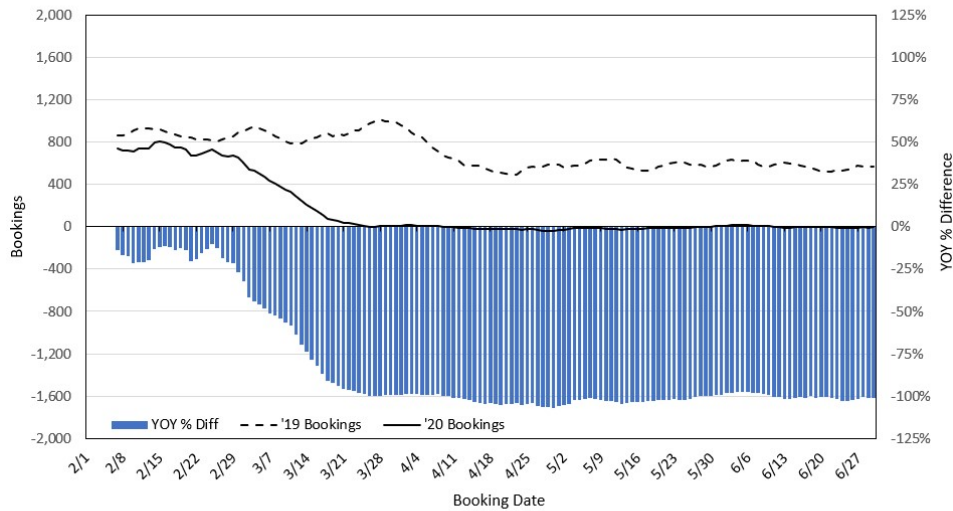
**Travel Agency Bookings to Hawaii for Future Arrivals*
Based on a 7-day Moving Average, 2020 vs 2019
Japan**



*Future Arrivals refers to all arrivals that are 'future' relative to the referenced booking date.
Source: Global Agency Pro

Update: Jun 30, 2020

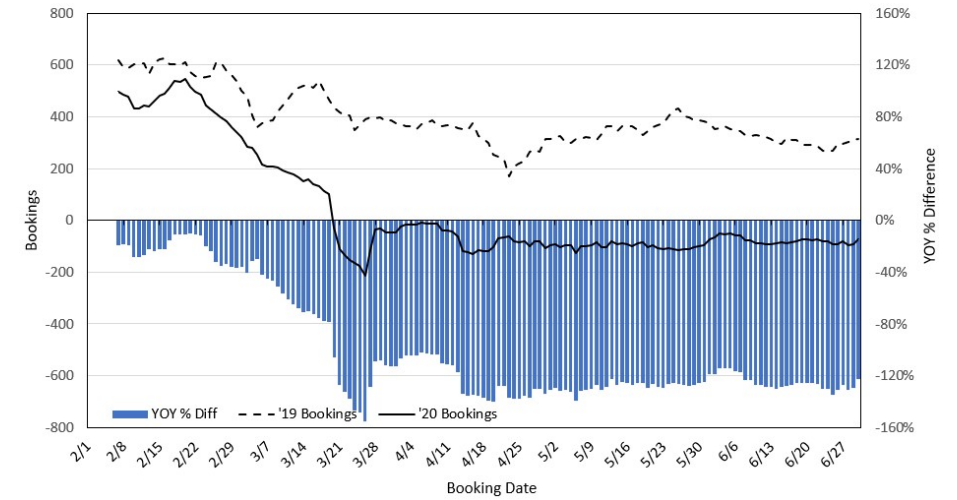
**Travel Agency Bookings to Hawaii for Future Arrivals*
Based on a 7-day Moving Average, 2020 vs 2019
Canada**



*Future Arrivals refers to all arrivals that are 'future' relative to the referenced booking date.
Source: Global Agency Pro

Update: Jun 30, 2020

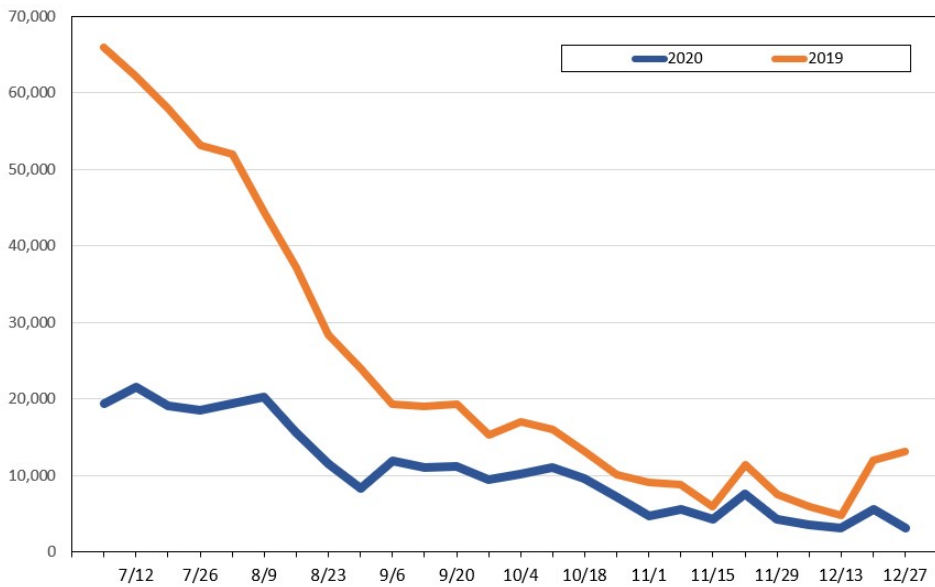
**Travel Agency Bookings to Hawaii for Future Arrivals*
Based on a 7-day Moving Average, 2020 vs 2019
Australia**



*Future Arrivals refers to all arrivals that are 'future' relative to the referenced booking date.
Source: Global Agency Pro

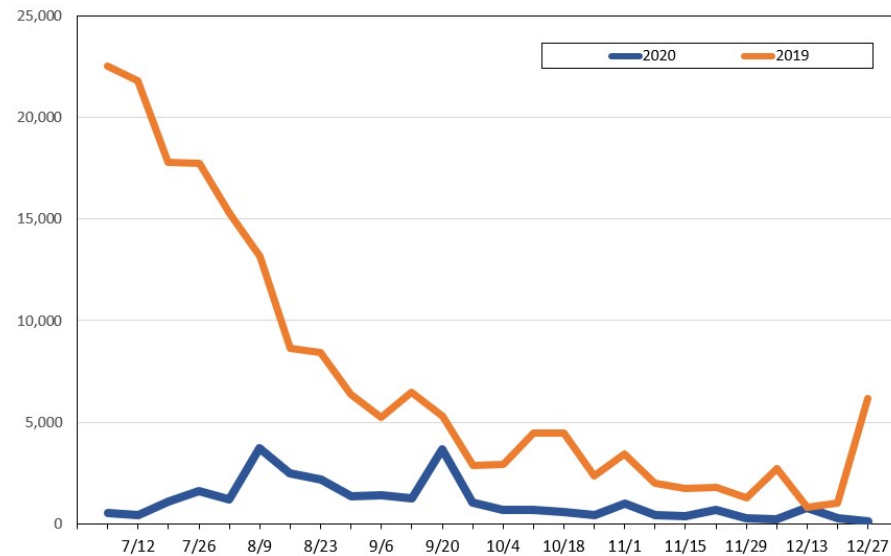
Update: Jun 30, 2020

**Travel Agency Bookings for Future Travel to Hawai'i as of June 30, 2020
U.S.**



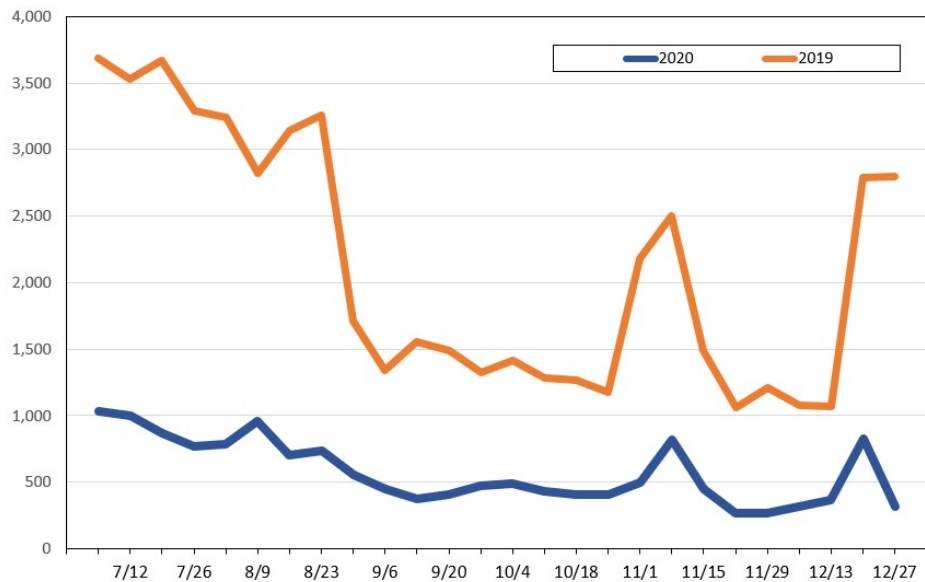
Source: Global Agency Pro, as of June 30, 2020

**Travel Agency Bookings for Future Travel to Hawai'i as of June 30, 2020
Japan**



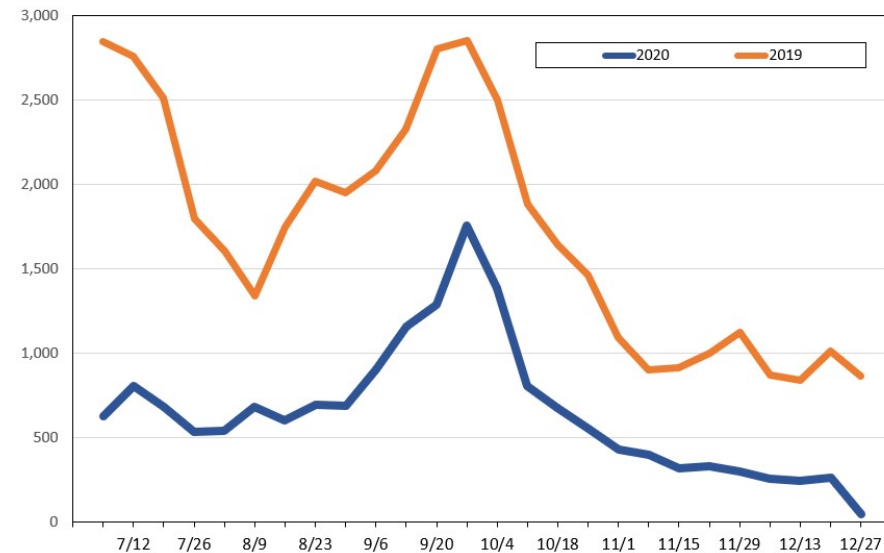
Source: Global Agency Pro, as of June 30, 2020

**Travel Agency Bookings for Future Travel to Hawai'i as of June 30, 2020
Canada**



Source: Global Agency Pro, as of June 30, 2020

**Travel Agency Bookings for Future Travel to Hawai'i as of June 30, 2020
Australia**



Source: Global Agency Pro, as of June 30, 2020