

HTA COVID-19 UPDATE

(Issued: 7/17/20 @ 6:30pm)

Novel Coronavirus in Hawaii

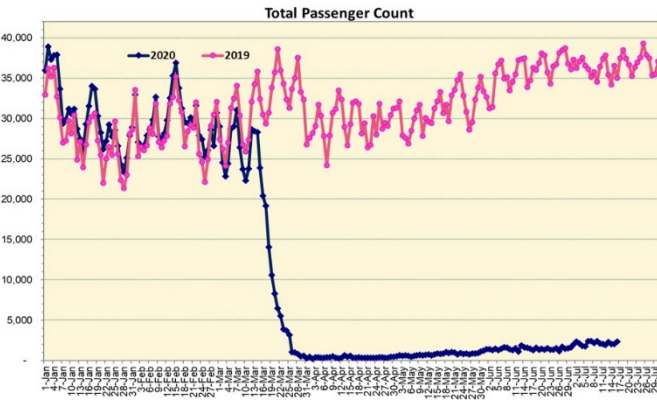
COVID-19 Positive* Cases

Cumulative totals as of 12:00 noon on July 17, 2020

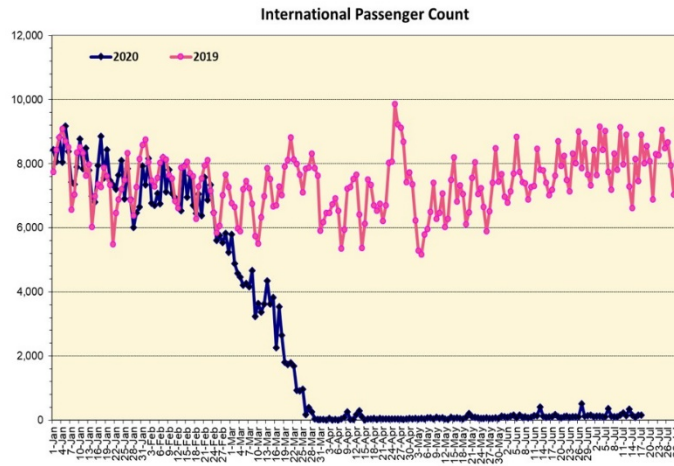
Statewide	Total
Total Cases	1334 (23 new)
Released from Isolation†	994
Required Hospitalization	139
Deaths	23
BY COUNTY	Total
Hawaii County	
Total Cases	109
Released from Isolation†	98
Required Hospitalization	4
Deaths	0
Honolulu County	
Total Cases	1025
Released from Isolation†	735
Required Hospitalization	107
Deaths	16
Kauai County	
Total Cases	43
Released from Isolation†	41
Required Hospitalization	1
Deaths	0
Maui County	
Total Cases	135
Released from Isolation†	120
Required Hospitalization	25
Deaths	6
HI Residents diagnosed outside of HI	22
County Pending	0

*includes presumptive and confirmed cases, data are preliminary and subject to change; note that CDC provides case counts according to states of residence.

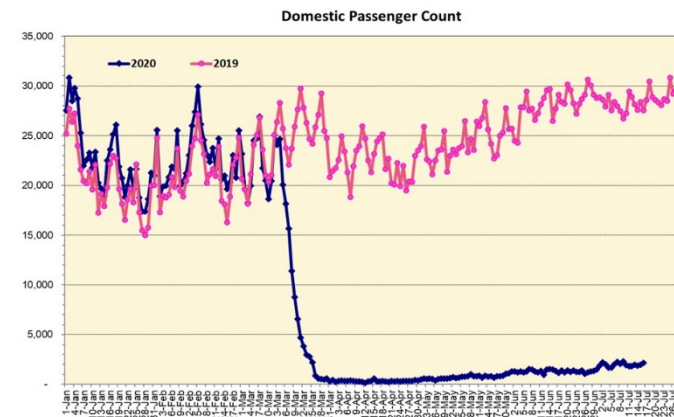
†Isolation should be maintained until at least 3 days (72 hours) after resolution of fever and myalgia without the use of antipyretics OR at least 7 days have passed since symptom onset, whichever is longer.



Note: Excludes flights from Canada



Note: Excludes flights from Canada



Daily Passenger Count Table

07/16/2020	Domestic	International	Total
Oahu	1878	153	2031
Maui	134		134
Island of Hawaii	121		121
Kauai	30		30
State	2163	153	2316

7/17/20 Hawaii Passenger Arrivals by Air Update

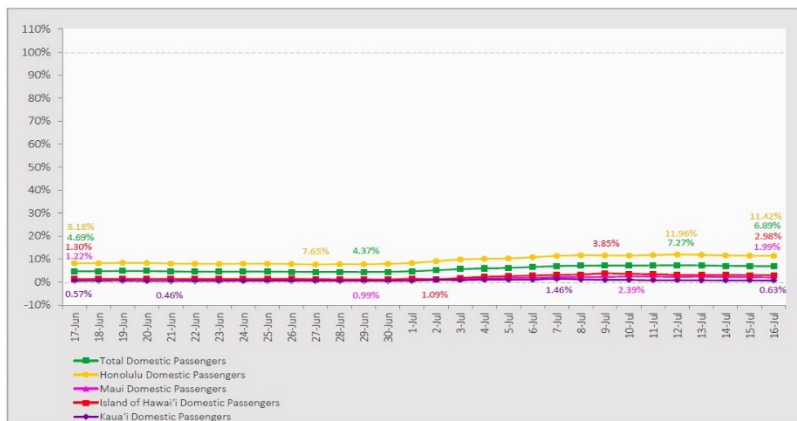
Yesterday, 2616 people arrived in Hawaii. This table shows the number of people who arrived by air from out of state yesterday and does not include interisland travel. This data was collected from the Hawaii DOT new Mandatory Travel Declaration Form.

	Kona	Maui	Oahu	Lihue	Total
Crew	9	18	265	8	300
Transit	1		189		190
Military			212		212
Exempt			111		111
Relocate to Hawaii	3	20	175	5	203
Returning Resident	46	81	726	10	863
Visitor	71	33	618	15	737
Grand Total	130	152	2296	38	2616
Flights	2	3	24	1	30

Market Impact Update: <https://www.dropbox.com/07/17/20 HTA COVID19 Update>

7-Day Domestic by Island Moving Average Daily Passenger Volume

2020 Volume as Percentage of 2019 Volume
Through July 16, 2020



Source: HVCB analysis based on data from DBEDT
Note: Passenger volume figures include both visitors and residents.

Domestic by Island Month-to-Date and Year-to-Date Daily Passenger Volume

2020 Volume versus 2019 Volume
Through July 16, 2020

July 2020 (Month-to-Date through July 16)

	2020	2019	Volume Change	Percent Change
Honolulu	27,101	234,172	-207,071	-88.4%
Maui County	2,537	121,438	-118,901	-97.9%
Island of Hawai'i	1,697	54,320	-52,623	-96.9%
Kaua'i	423	41,830	-41,407	-99.0%
Total	31,758	451,760	-420,002	-93.0%

2020 (Year-to-Date through July 16)

	2020	2019	Volume Change	Percent Change
Honolulu	1,054,890	2,502,047	-1,447,157	-57.8%
Maui County	447,537	1,210,899	-763,362	-63.0%
Island of Hawai'i	220,664	560,508	-339,844	-60.6%
Kaua'i	150,026	421,458	-271,432	-64.4%
Total	1,873,117	4,694,912	-2,821,795	-60.1%

Source: HVCB analysis based on data from DBEDT
Note: Passenger volume figures include both visitors and residents. Total includes other international passengers. 2020 includes one additional day due to Leap Year (February 29th, 2020).

News Highlights

July 17, 2020

Honolulu Star-Advertiser: [VIDEO: Gov. David Ige discusses the enforcement of mandatory self-quarantine for Hawaii visitors](#)

KHON2: [After Sep. 1, Hawaii may set up hotels for visitors to quarantine in](#)

Hawaii News Now: [Consolidated Theatres offers new way to go to the movies while avoiding crowds](#)

Hawaii Tribune-Herald: [County seeks proposals to spend virus relief funds](#)

KITV4: [Keiki invited to take a Virtual Voyage with the Honolulu Zoo Society](#)

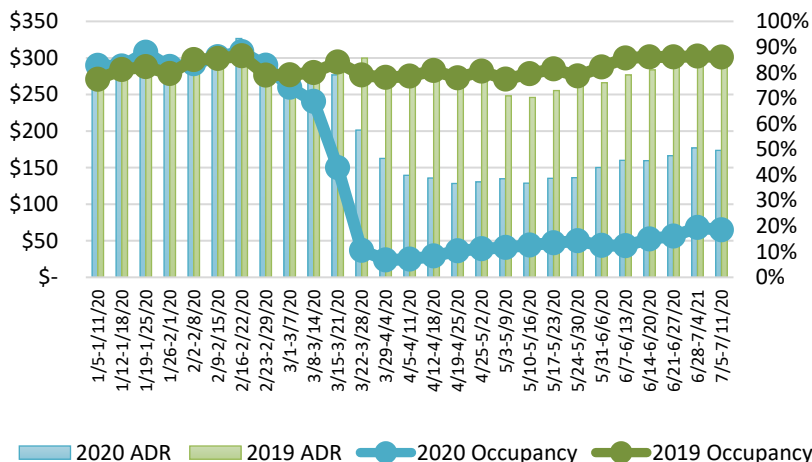
Maui Now: [LINEAGE Restaurant at The Shops at Wailea Reopens for Dine-In on Aug. 1](#)

Hawaii Public Radio: [The Conversation: Enforcing Hawaii's Travel Quarantine](#)

Pacific Business News: [Honolulu Museum of Art reopens with new hours, guidelines](#)

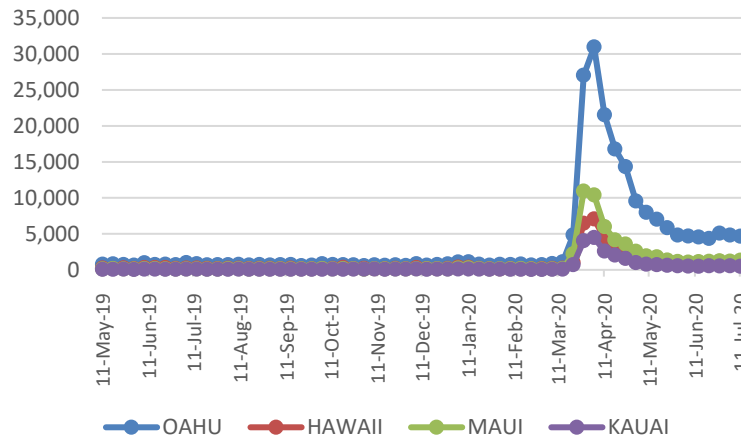
USA Today: [Not all airlines are shrinking during the pandemic; Alaska adds 10 nonstop routes from West Coast](#)

State of Hawai'i Hotel Performance by Week - 2020 vs 2019



Source: STR, Inc. © Copyright 2020 Hawai'i Tourism Authority

2020 Initial Weekly Unemployment Claims by Island



Weekly Unemployment Initial Claims: July 11, 2020

State of Hawaii	7,696
C&C of Oahu	4,667
Hawaii County	1,060
Maui County	1,323
Kauai County	475
Agent (filed in Hawaii against another state)	171

Hawaii Hotel Performance Info:

For the week of July 5 – July 11, 2020

	Occupancy	ADR	RevPAR
State of Hawaii	18.5%	\$ 173.60	\$ 32.11
Oahu	19.1%	\$ 176.67	\$ 33.77
Maui County	11.5%	\$ 184.46	\$ 21.20
Kauai County	20.4%	\$ 166.22	\$ 33.83
Island of Hawaii	25.3%	\$ 161.83	\$ 40.91

Helpful Resources

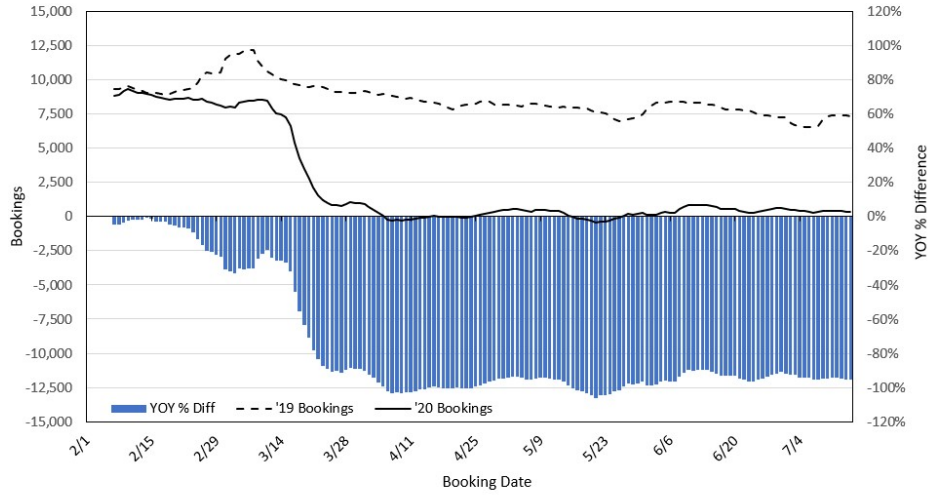
Department of Health
<https://hawaiiocovid19.com/>

Department of Health
<https://health.hawaii.gov/docd/advisories/novel-coronavirus-2019>

Dept. of Business, Economic Development & Tourism
<https://dbedt.hawaii.gov/economic/covid19/>

Department of Transportation
<https://hidot.hawaii.gov/coronavirus/>

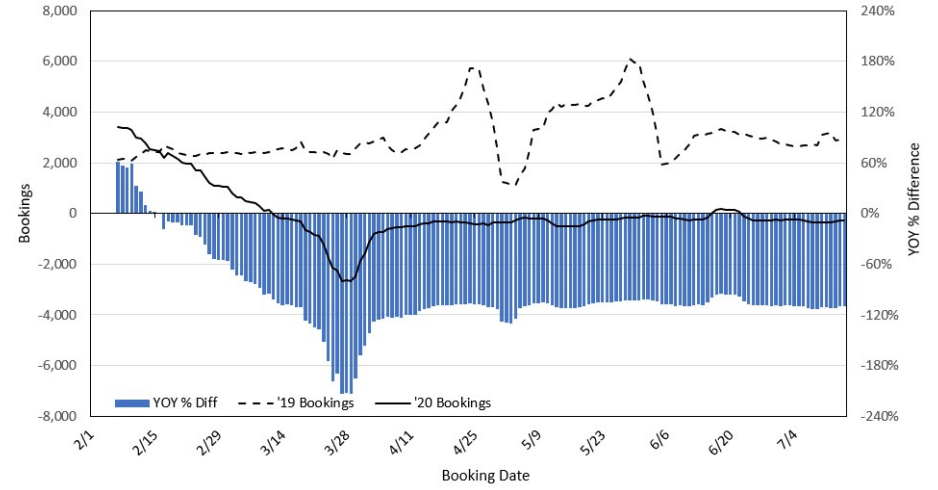
Travel Agency Bookings to Hawaii for Future Arrivals*
Based on a 7-day Moving Average, 2020 vs 2019
U.S.



*Future Arrivals refers to all arrivals that are 'future' relative to the referenced booking date.
 Source: Global Agency Pro

Update: Jul 15, 2020

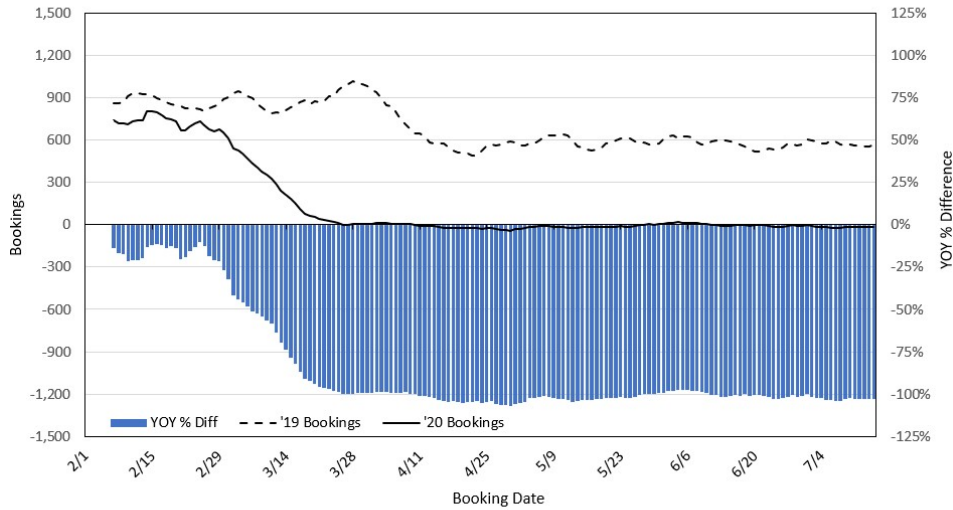
Travel Agency Bookings to Hawaii for Future Arrivals*
Based on a 7-day Moving Average, 2020 vs 2019
Japan



*Future Arrivals refers to all arrivals that are 'future' relative to the referenced booking date.
 Source: Global Agency Pro

Update: Jul 15, 2020

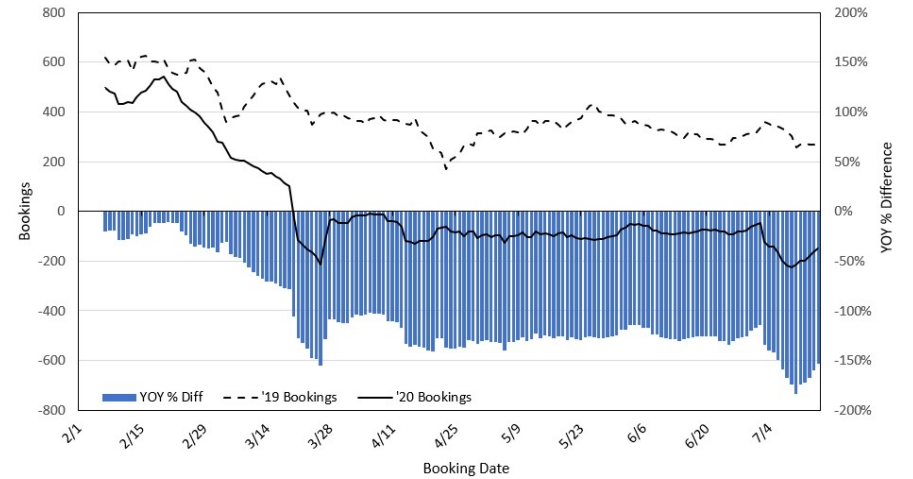
Travel Agency Bookings to Hawaii for Future Arrivals*
Based on a 7-day Moving Average, 2020 vs 2019
Canada



*Future Arrivals refers to all arrivals that are 'future' relative to the referenced booking date.
 Source: Global Agency Pro

Update: Jul 15, 2020

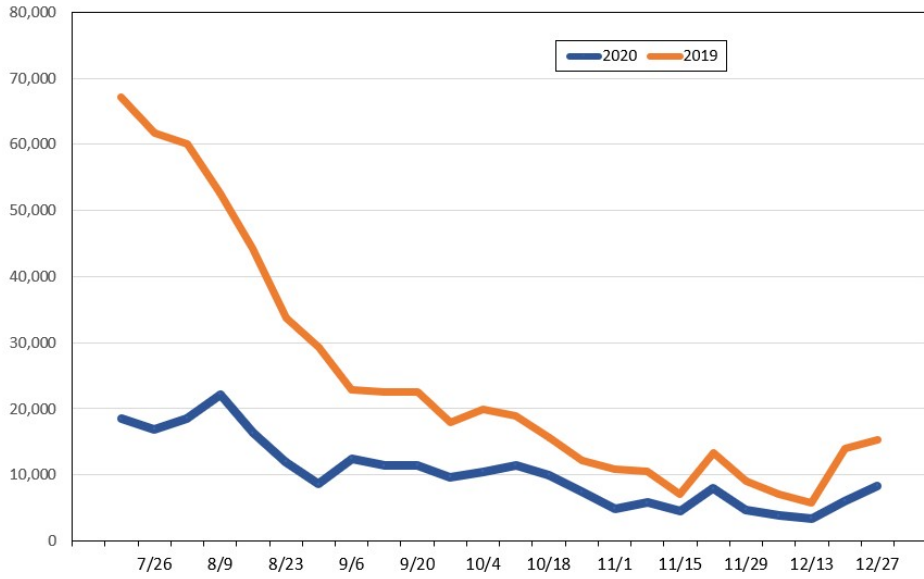
Travel Agency Bookings to Hawaii for Future Arrivals*
Based on a 7-day Moving Average, 2020 vs 2019
Australia



*Future Arrivals refers to all arrivals that are 'future' relative to the referenced booking date.
 Source: Global Agency Pro

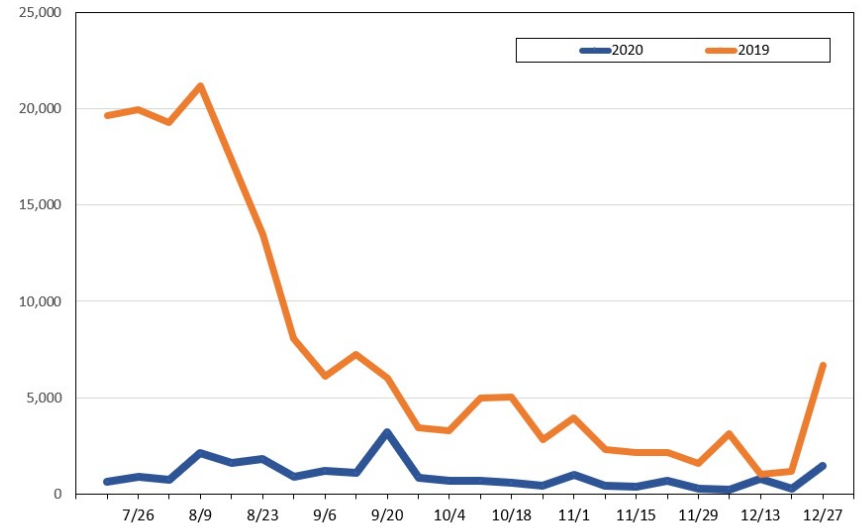
Update: Jul 15, 2020

Travel Agency Weekly Bookings for Future Travel to Hawai'i as of July 15, 2020
U.S.



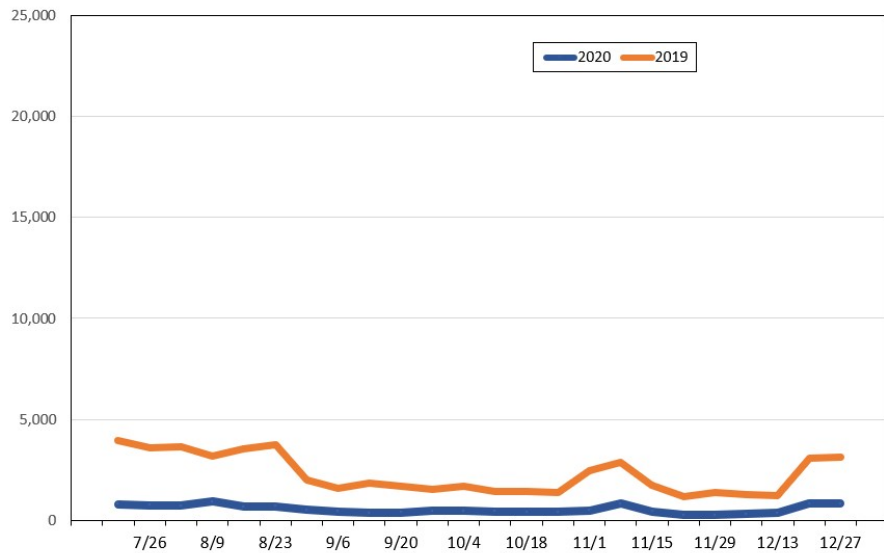
Source: Global Agency Pro, as of July 15, 2020

Travel Agency Weekly Bookings for Future Travel to Hawai'i as of July 15, 2020
Japan



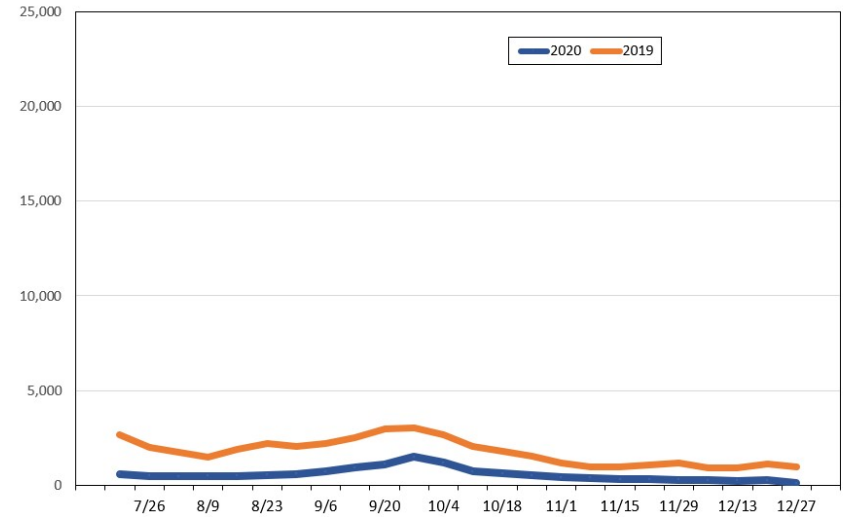
Source: Global Agency Pro, as of July 15, 2020

Travel Agency Weekly Bookings for Future Travel to Hawai'i as of July 15, 2020
Canada



Source: Global Agency Pro, as of July 15, 2020

Travel Agency Weekly Bookings for Future Travel to Hawai'i as of July 15, 2020
Australia



Source: Global Agency Pro, as of July 15, 2020