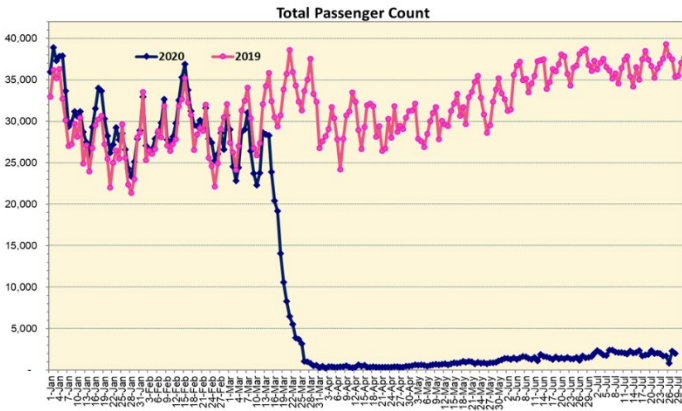
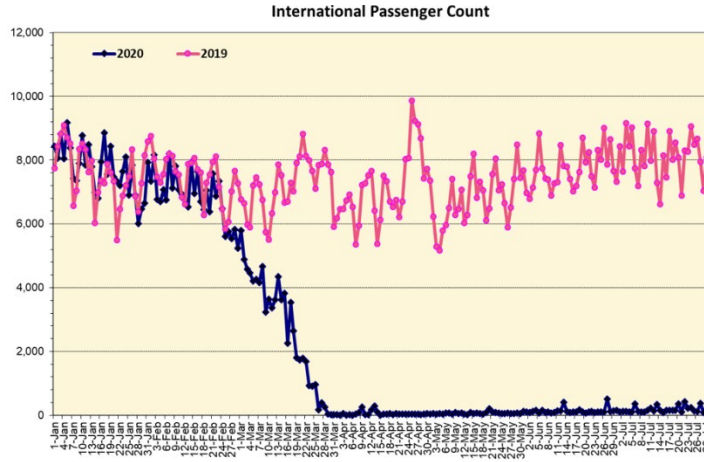


HTA COVID-19 UPDATE

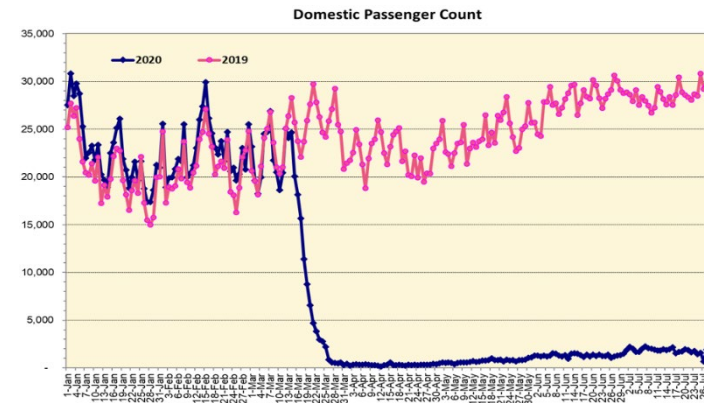
(Issued: 7/29/20 @ 4:00pm)



Note: Excludes flights from Canada



Note: Excludes flights from Canada



Daily Passenger Count Table

07/28/2020	Domestic	International	Total
Oahu	1625	89	1714
Maui	135		135
Island of Hawaii	115		115
Kauai	39		39
State	1914	89	2003

7/29/20 Hawaii Passenger Arrivals by Air Update

Yesterday, 2255 people arrived in Hawaii. This table shows the number of people who arrived by air from out of state yesterday and does not include interisland travel. This data was collected from the Hawaii DOT new Mandatory Travel Declaration Form.

	Kona	Maui	Oahu	Lihue	Total
Crew	6	21	218	6	251
Transit	1		165		166
Military			184		184
Exempt			140		140
Relocate to Hawaii	20	7	108	8	143
Returning Resident	44	90	730	10	874
Visitor	55	38	384	20	497
Grand Total	126	156	1929	44	2255
Flights	2	3	20	1	26

Market Impact Update: <https://www.dropbox.com/07/29/20 HTA COVID19 Update>

Novel Coronavirus in Hawaii

COVID-19 Positive* Cases

Cumulative totals as of 12:00 noon on July 29, 2020

Statewide	Total
Total Cases	1865 (109 new)
Released from Isolation†	1215
Required Hospitalization	173
Deaths	26
BY COUNTY	Total
Hawaii County	
Total Cases	116
Released from Isolation†	114
Required Hospitalization	4
Deaths	0
Honolulu County	
Total Cases	1516
Released from Isolation†	934
Required Hospitalization	140
Deaths	19
Kauai County	
Total Cases	47
Released from Isolation†	42
Required Hospitalization	1
Deaths	0
Maui County	
Total Cases	163
Released from Isolation†	125
Required Hospitalization	26
Deaths	6
HI Residents diagnosed outside of HI	23
County Pending	0

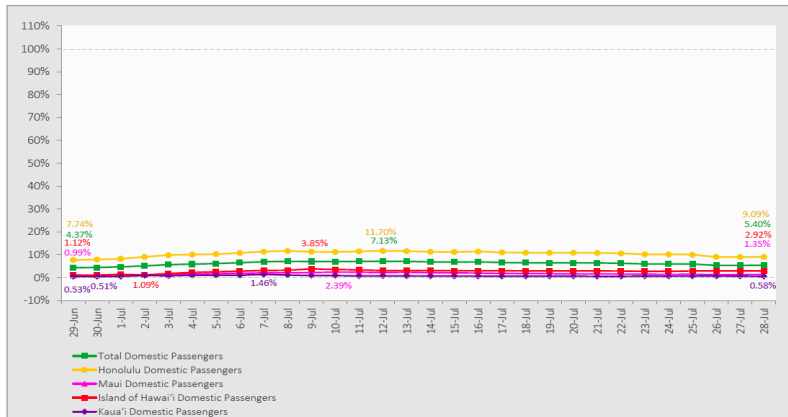
*includes presumptive and confirmed cases, data are preliminary and subject to change; note that CDC provides case counts according to states of residence.

†Isolation should be maintained until at least 3 days (72 hours) after resolution of fever and myalgia without the use of antipyretics OR at least 7 days have passed since symptom onset, whichever is longer.

7-Day Domestic by Island Moving Average Daily Passenger Volume

2020 Volume as Percentage of 2019 Volume

Through July 28, 2020



Source: HVCB analysis based on data from DBEDT
Note: Passenger volume figures include both visitors and residents.

Domestic by Island Month-to-Date and Year-to-Date Daily Passenger Volume

2020 Volume versus 2019 Volume

Through July 28, 2020

July 2020 (Month-to-Date through July 28)

	2020	2019	Volume Change	Percent Change
Honolulu	43,804	411,377	-367,573	-89.4%
Maui County	3,917	217,042	-213,125	-98.2%
Island of Hawai'i	2,883	95,637	-92,754	-97.0%
Kaua'i	613	73,688	-73,075	-99.2%
Total	51,217	797,744	-746,527	-93.6%

2020 (Year-to-Date through July 28)

	2020	2019	Volume Change	Percent Change
Honolulu	1,071,593	2,679,252	-1,607,659	-60.0%
Maui County	448,917	1,306,503	-857,586	-65.6%
Island of Hawai'i	221,850	601,825	-379,975	-63.1%
Kaua'i	150,216	453,316	-303,100	-66.9%
Total	1,892,576	5,040,896	-3,148,320	-62.5%

Source: HVCB analysis based on data from DBEDT
Note: Passenger volume figures include both visitors and residents. Total includes other international passengers. 2020 includes one additional day due to Leap Year (February 29th, 2020).

News Highlights

July 29, 2020

Honolulu Star-Advertiser: [More than 500 visitors land in Hawaii on Monday after Hurricane Douglas's departure](#)

Honolulu Star-Advertiser: [Hawaiian Airlines plans to shrink 15% to 25%](#)

Honolulu Star-Advertiser: [Large gatherings, trucks driving over Hawaiian burial sites, widespread defecation force closure of Polihale State Park on Kauai](#)

Pacific Business News: [Polynesian Cultural Center to permanently layoff up to 80 employees due to Covid effect on tourism](#)

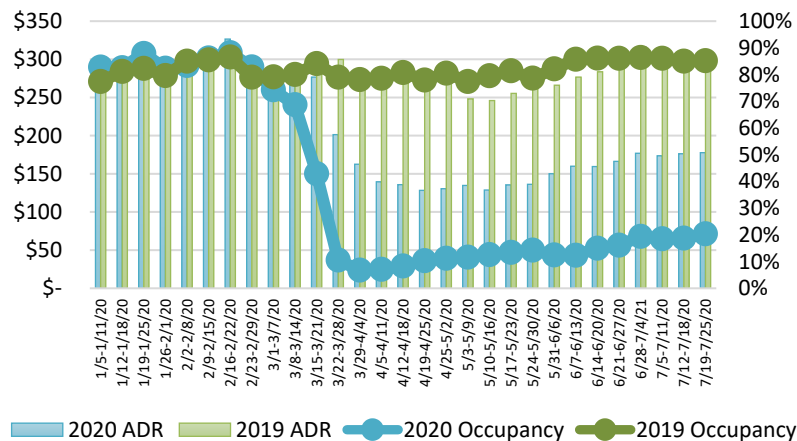
The Maui News: [Hawaii considered by Japan for resumption of travel](#)

Honolulu Civil Beat: [Our Struggling Economy: The First 'Cliff' Is Almost Here And A Second One Is Looming](#)

Pacific Business News: [Covid shutdowns cause Hawaii hotel revenues to drop 50% in first half of 2020](#)

USA Today: [As Japan considers resuming international travel amid COVID-19, one US state is under consideration](#)

State of Hawai'i Hotel Performance by Week - 2020 vs 2019



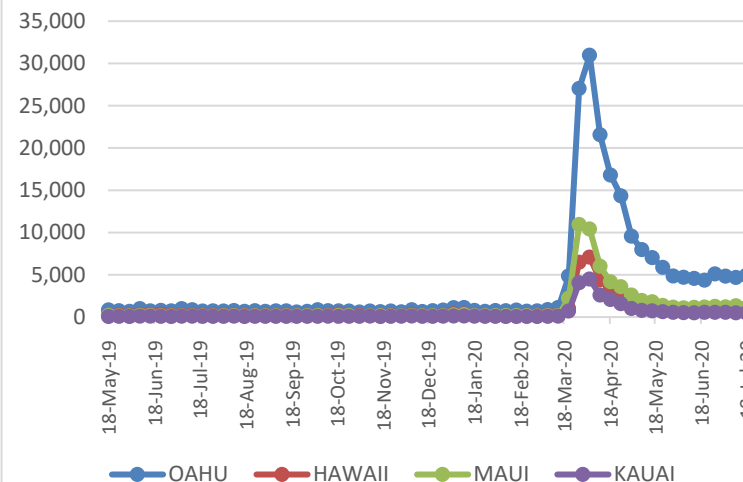
Source: STR, Inc. © Copyright 2020 Hawai'i Tourism Authority

Hawaii Hotel Performance Info:

For the week of July 19 – July 25, 2020

	Occupancy	ADR	RevPAR
State of Hawaii	20.4%	\$ 177.72	\$ 36.22
Oahu	22.7%	\$ 179.71	\$ 40.85
Maui County	10.2%	\$ 210.55	\$ 21.53
Kauai County	21.0%	\$ 192.55	\$ 40.41
Island of Hawaii	27.9%	\$ 139.99	\$ 39.07

2020 Initial Weekly Unemployment Claims by Island



Weekly Unemployment Initial Claims: July 18, 2020

State of Hawaii	7,627
C&C of Oahu	4,908
Hawaii County	996
Maui County	1,102
Kauai County	489
Agent (filed in Hawaii against another state)	132

Helpful Resources

Department of Health

<https://hawaiiicovid19.com/>

Department of Health

<https://health.hawaii.gov/docd/advisories/novel-coronavirus-2019>

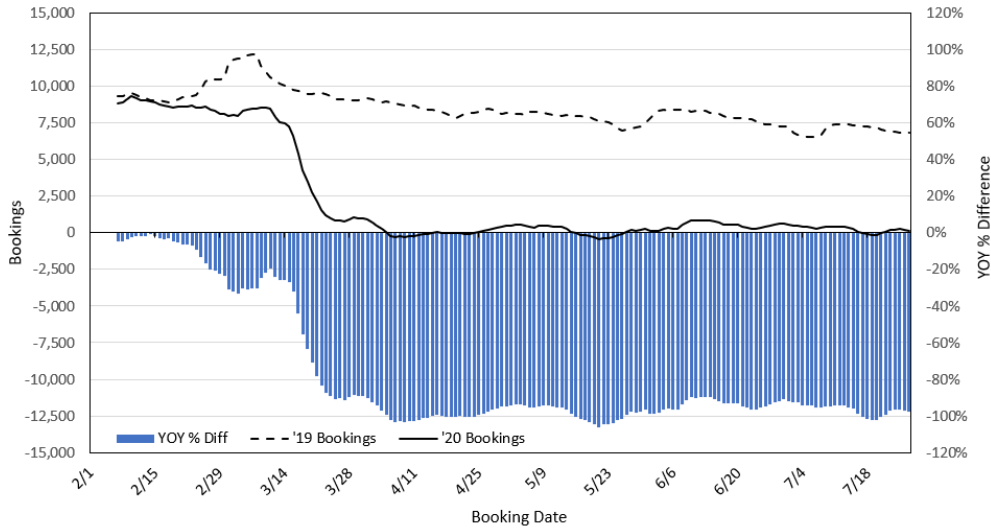
Dept. of Business, Economic Development & Tourism

<https://dbedt.hawaii.gov/economic/covid19/>

Department of Transportation

<https://hidot.hawaii.gov/coronavirus/>

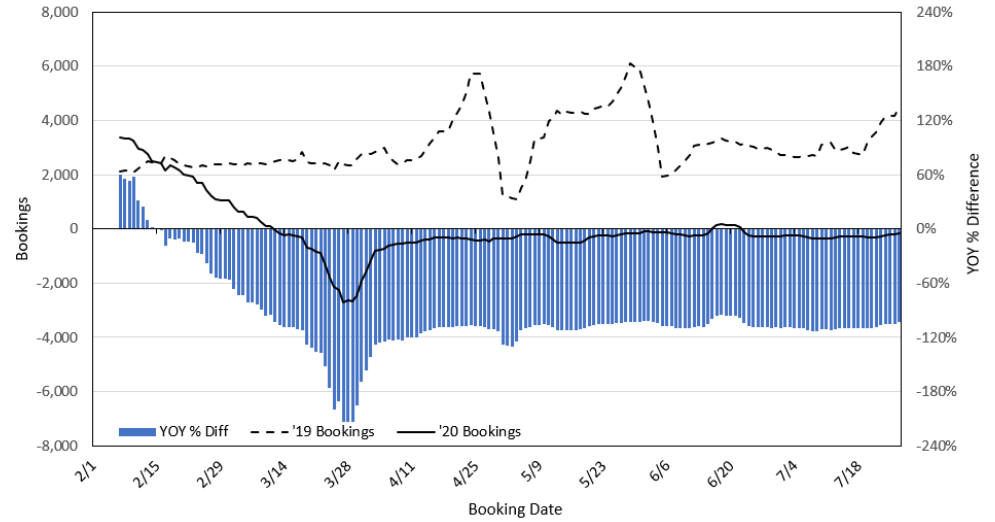
**Travel Agency Bookings to Hawaii for Future Arrivals*
Based on a 7-day Moving Average, 2020 vs 2019
U.S.**



*Future Arrivals refers to all arrivals that are 'future' relative to the referenced booking date.
Source: Global Agency Pro

Update: Jul 27, 2020

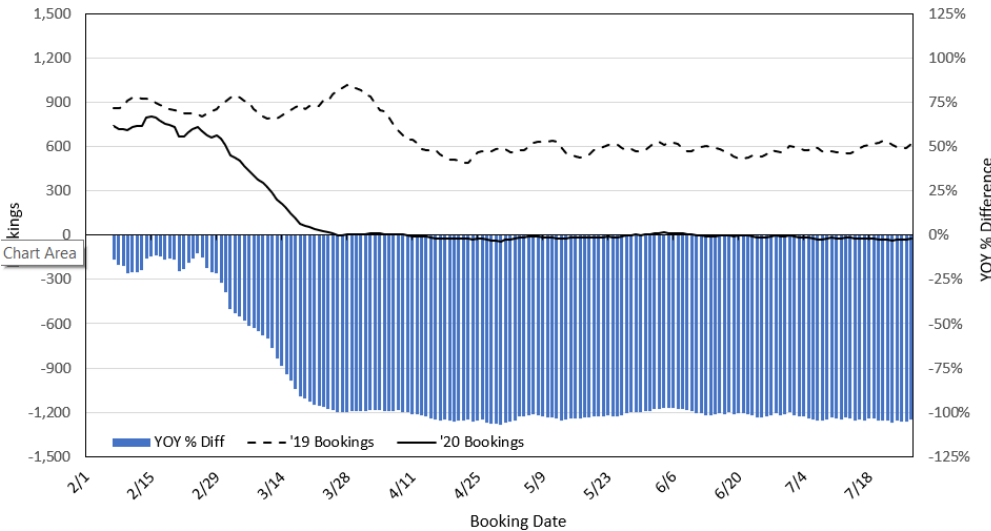
**Travel Agency Bookings to Hawaii for Future Arrivals*
Based on a 7-day Moving Average, 2020 vs 2019
Japan**



*Future Arrivals refers to all arrivals that are 'future' relative to the referenced booking date.
Source: Global Agency Pro

Update: Jul 27, 2020

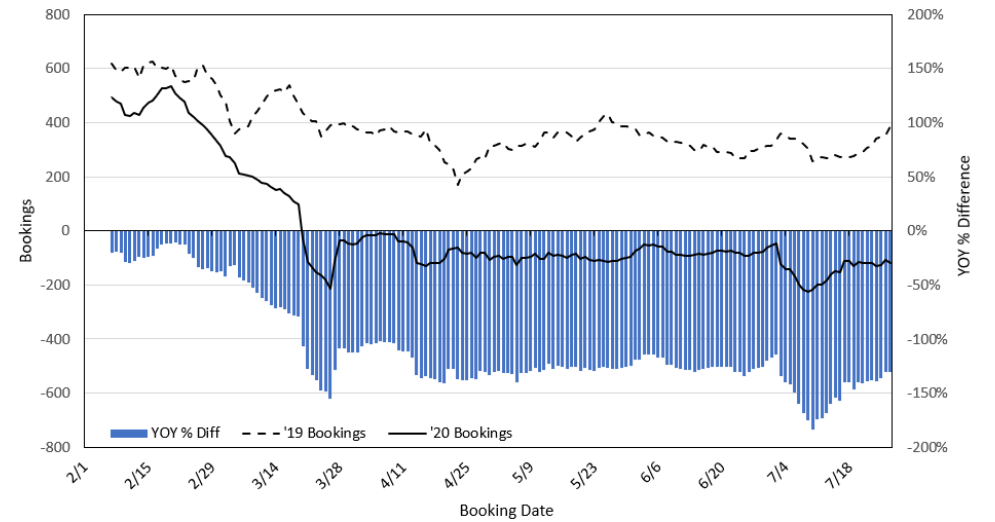
**Travel Agency Bookings to Hawaii for Future Arrivals*
Based on a 7-day Moving Average, 2020 vs 2019
Canada**



*Future Arrivals refers to all arrivals that are 'future' relative to the referenced booking date.
Source: Global Agency Pro

Update: Jul 27, 2020

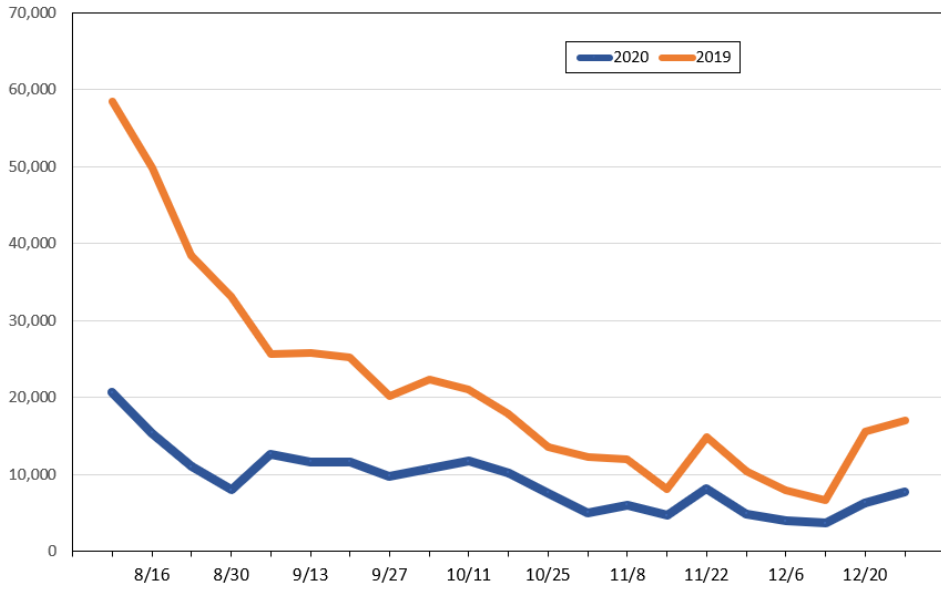
**Travel Agency Bookings to Hawaii for Future Arrivals*
Based on a 7-day Moving Average, 2020 vs 2019
Australia**



*Future Arrivals refers to all arrivals that are 'future' relative to the referenced booking date.
Source: Global Agency Pro

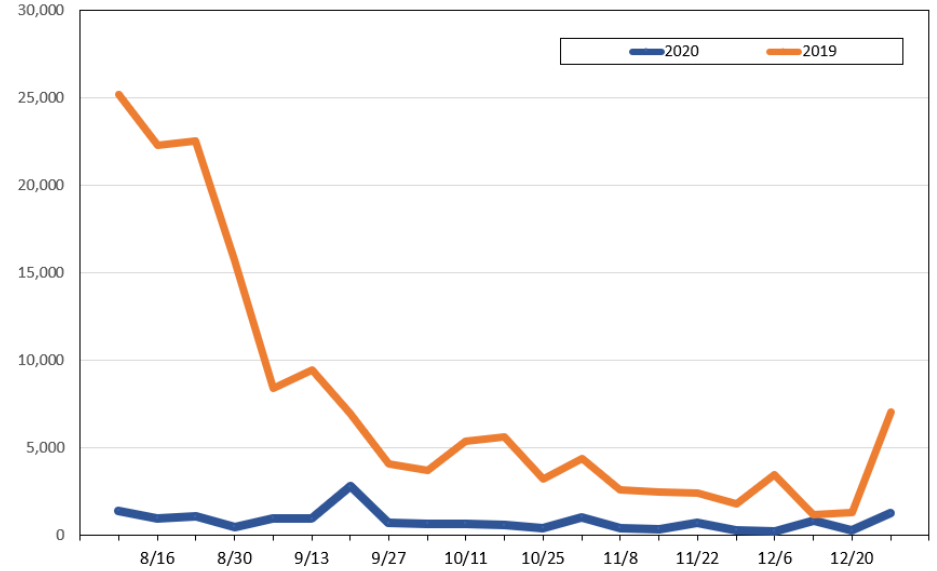
Update: Jul 27, 2020

Travel Agency Weekly Bookings for Future Travel to Hawai'i as of July 27, 2020
U.S.



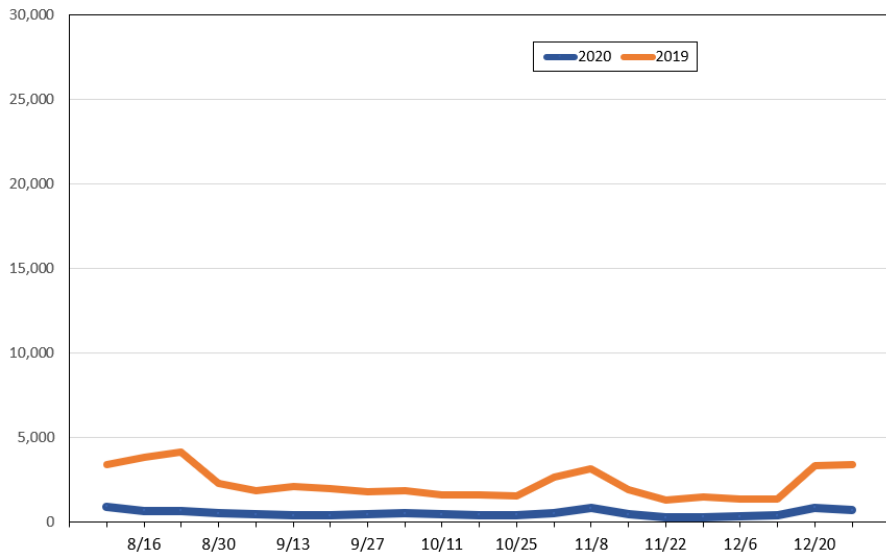
Source: Global Agency Pro, as of July 27, 2020

Travel Agency Weekly Bookings for Future Travel to Hawai'i as of July 27, 2020
Japan



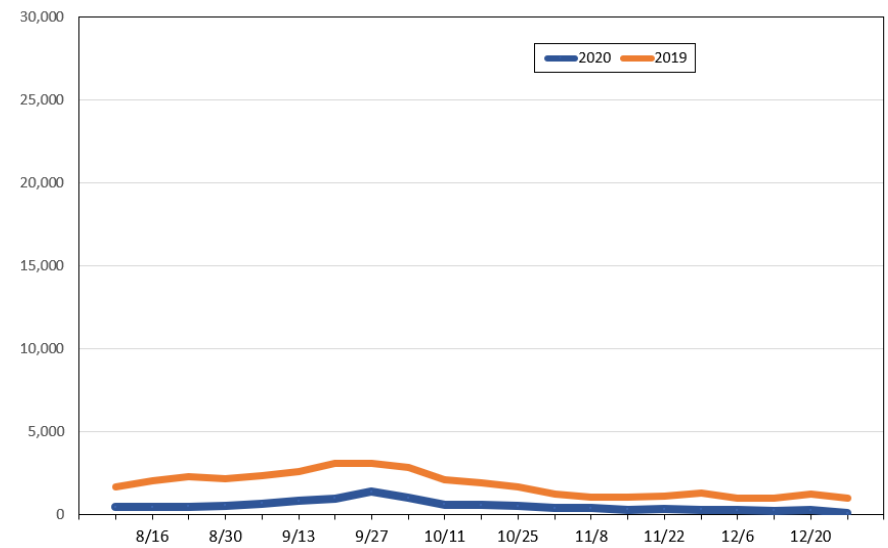
Source: Global Agency Pro, as of July 27, 2020

Travel Agency Weekly Bookings for Future Travel to Hawai'i as of July 27, 2020
Canada



Source: Global Agency Pro, as of July 27, 2020

Travel Agency Weekly Bookings for Future Travel to Hawai'i as of July 27, 2020
Australia



Source: Global Agency Pro, as of July 27, 2020